

# Safe Streets for All



*Safety with Respect*

**CITY & COUNTY OF SAN FRANCISCO**

Police Department  
Traffic Division

April 2024



## Education



← Mothers Against Drunk Driving (MADD)  
24.4K posts

Ensuring more people can get there for more cherished moments with loved ones.

**TOGETHER**  
MOVING FORWARD  
TO A SAFER HOLIDAY SEASON

Pledge *ToGetThere* Safely

madd.org/togetherthere

**madd**  
NO MORE VICTIMS

Follow

**THAT WILL COST YOU.**

San Francisco takes distracted driving seriously.

San Francisco Police Retweeted  
nhtsagov @NHTSAgov · Apr 10  
Put. The. Distractions. Down. #JustDrive

**8.2%**  
The percentage of distracted driving fatalities in 2021

ALT

**SAFETY TIPS FOR DRIVING IN THE RAIN**

- TURN ON HEADLIGHT**  
Turn your headlights on even when it isn't raining. You should do this regardless of whether it day or night.
- LOOKOUT FOR PEDESTRANS**  
In rainy conditions, pedestrians are harder to see. Keep them safe by slowing down and watching for them.
- 3 SECONDS DISTANCE RULE**  
Be sure to give yourself plenty of time to stop. Pick a car in front of you and count the seconds you need to reach it. If you can't reach it in 3 seconds, you're too close.
- DO NOT FOLLOW TRUCKS OR BUSES TOO CLOSELY**  
Giving them more room gives you a better view of what's going on ahead.
- AVOID SUDDEN MOTION**  
Slowing to a safe condition is essential. This is because you need to give the tires time to grip.
- AVOID HEAVY RAIN**  
If you have never driven in heavy rain before, you will become uncomfortable only driving during a heavy rainstorm.
- DRIVE SLOWLY**  
Slowing down while driving in a rainy condition is the best way to reduce a person's chance of losing control of the vehicle.

Driver

STOP REST

## Promote Road Safety and Awareness



**SFPDTrafficSafety** @SFTrafficSafety · May 4  
Valencia St. is undergoing changes. NO LEFT TURN / NO U-TURN signs will be installed from 23rd / Valencia continuing north to 15th St. SFPD will be educating drivers regarding these changes over the next several weeks as the bike lanes are installed.



**SFPDTrafficSafety** @SFTrafficSafety · May 5  
More signage going up on Valencia. Please be aware of the changes.



San Francisco Police reposted



**CHP San Francisco** @CHPSanFrancisco · Feb 11  
#TRAFFICALERT: Several off-ramps on U.S. 101 & I-280 are expected to be closed this evening starting @ 7:00 pm-12:00 am. Motorists should expect delays and use alternate routes. Check our FB page for specific details.

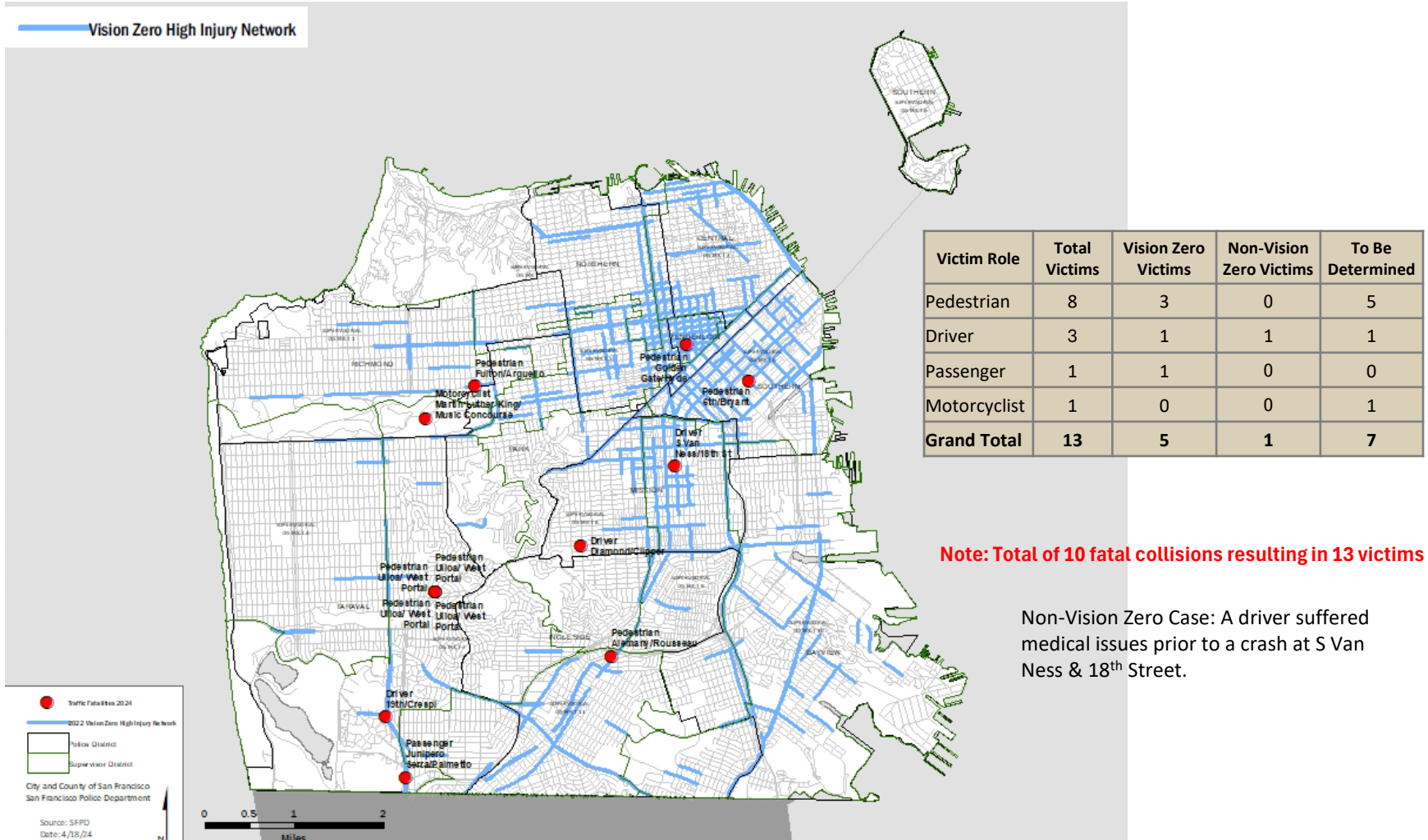
Please celebrate & drive responsibly! Go 49ers!!





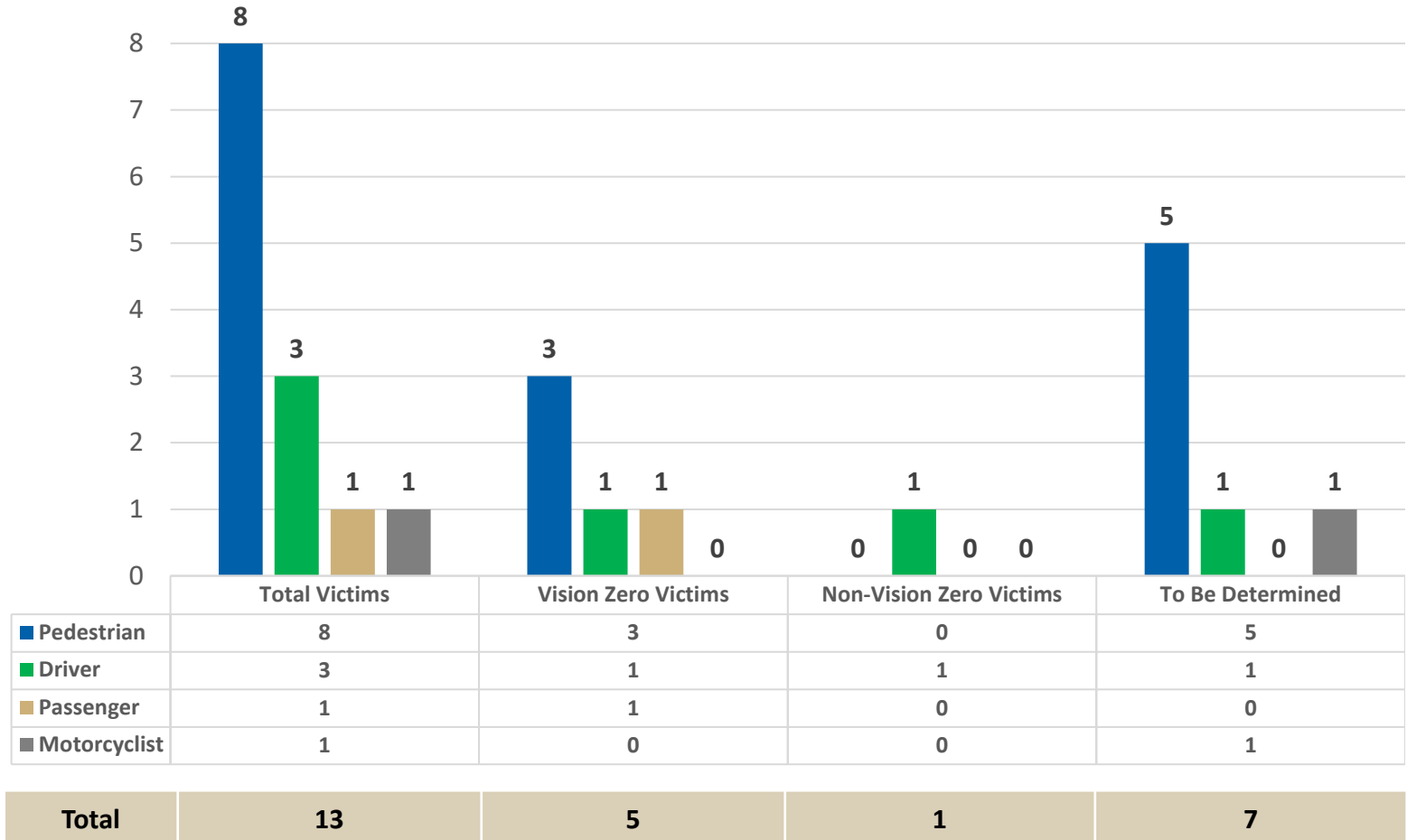
## SF Traffic Fatalities

1/1/2024 – 3/31/2024



# SF Traffic Fatalities

1/1/2024 – 3/31/2024

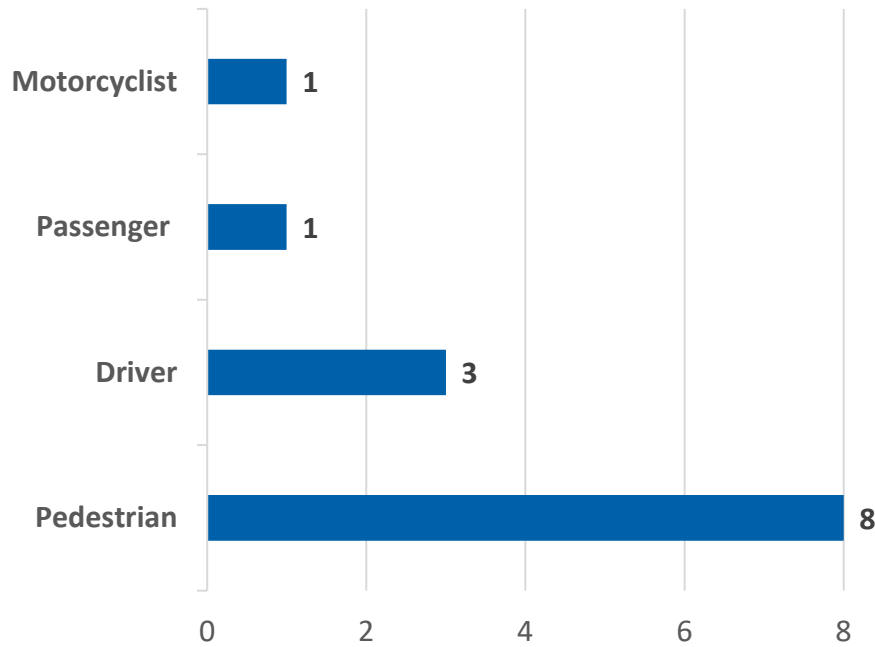


Non-Vision Zero Case: A driver suffered medical issues prior to a crash at S Van Ness & 18<sup>th</sup> Street.

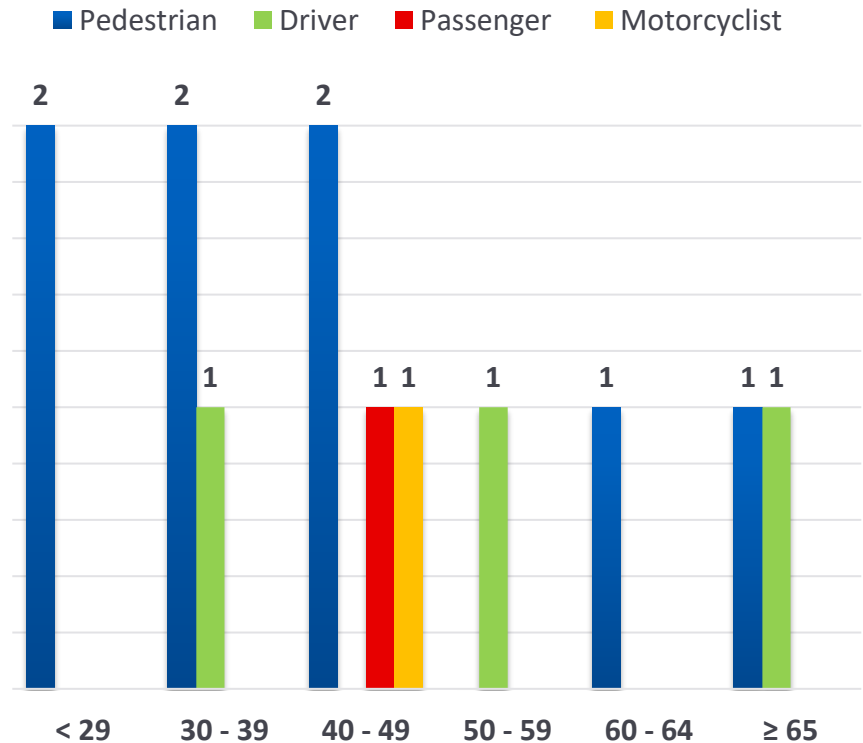
**Note: Total of 10 fatal collisions resulting in 13 victims**

## SF Traffic Fatalities

1/1/2024 – 3/31/2024



### Victim by Age

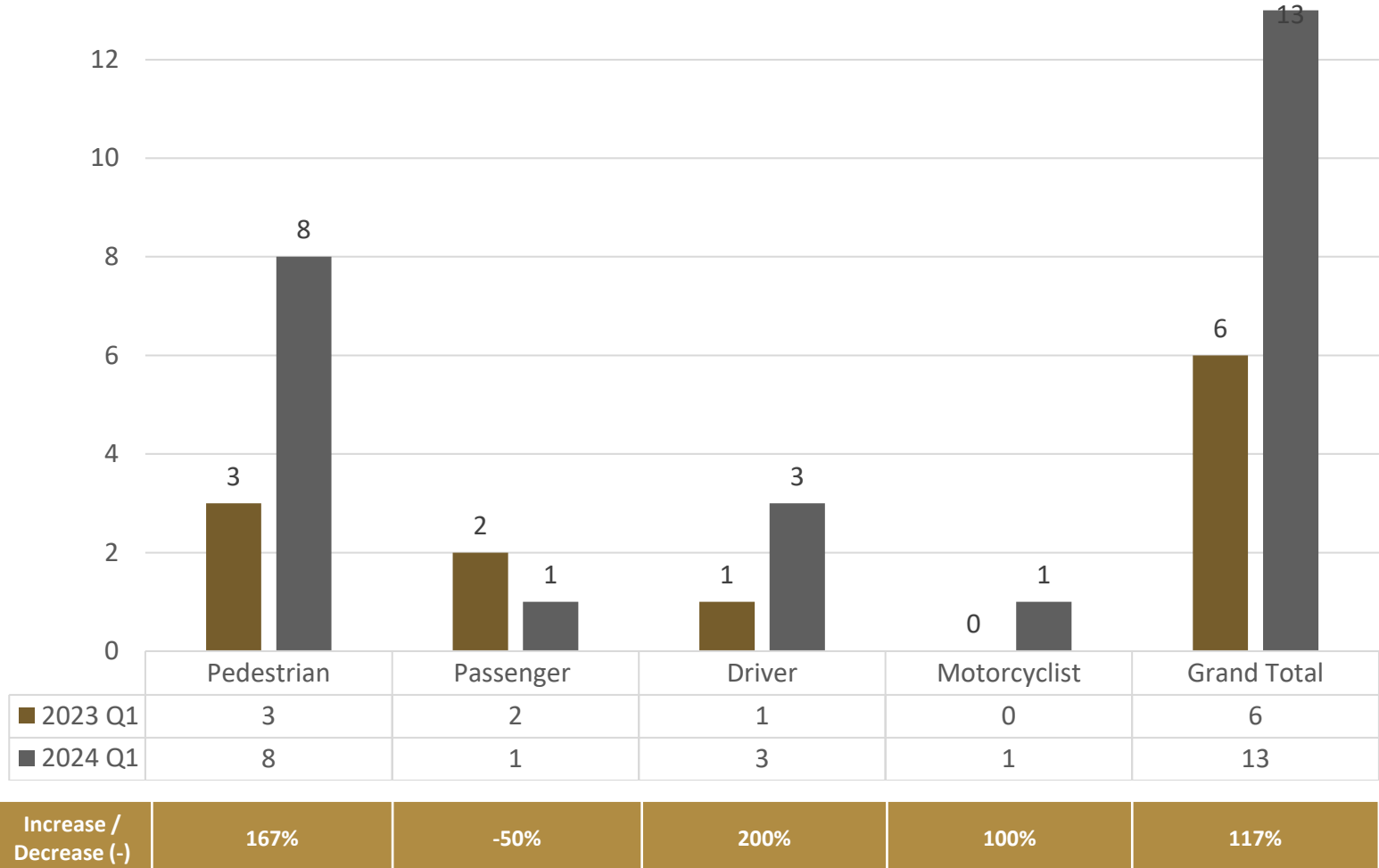


**Total of 10 fatal collisions resulting in 13 victims**

1 Non-Vision Zero Case: A driver suffered medical issues prior to a crash at S Van Ness & 18<sup>th</sup> Street.

# SF Traffic Fatalities

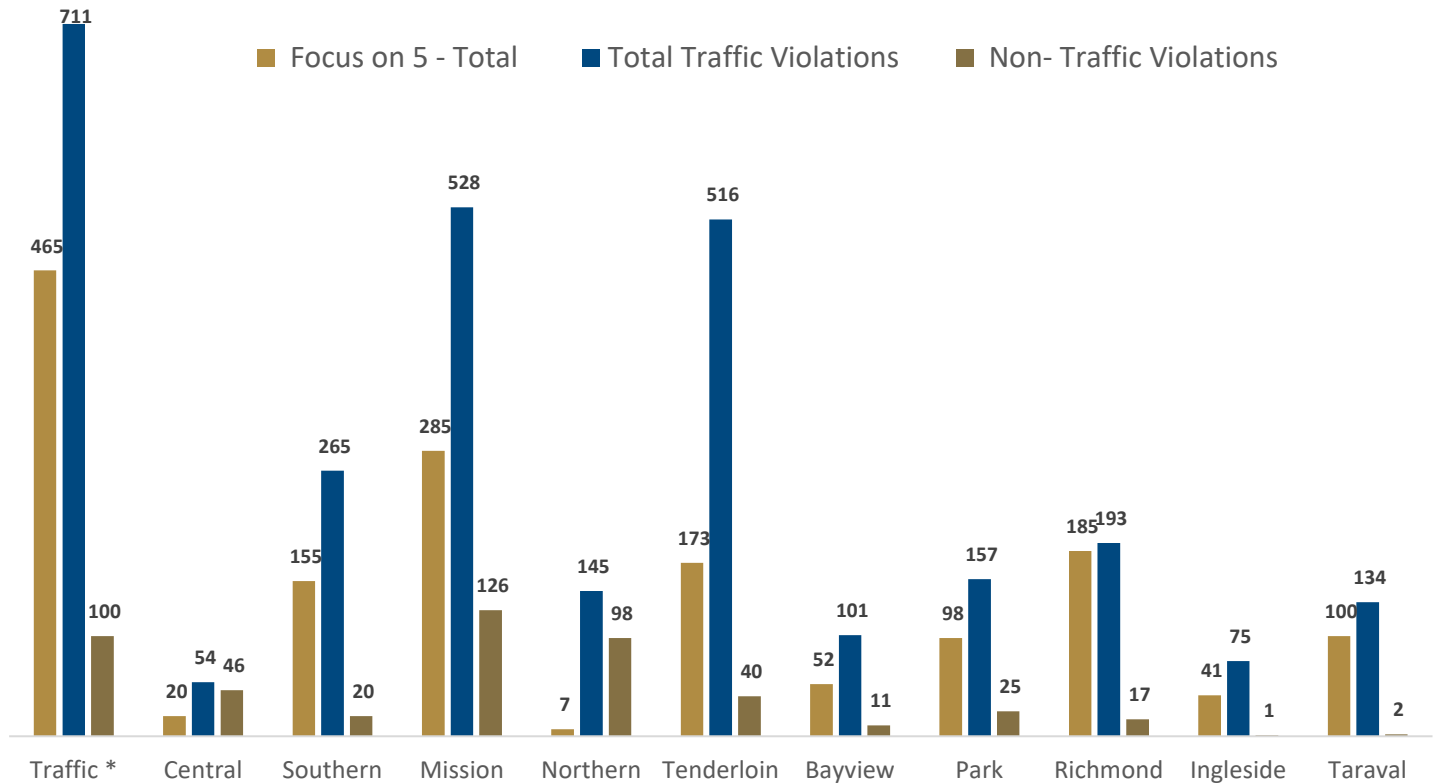
2023 Q1 vs 2024 Q1



1 Non-Vision Zero Case: A driver suffered medical issues prior to a crash at S Van Ness & 18<sup>th</sup> Street.

**2024 Q1: Total of 10 fatal collisions resulting in 13 victims**

## DEPT. WIDE TRAFFIC VIOLATION & FOCUS ON FIVE VIOLATION TOTALS January – March 2024



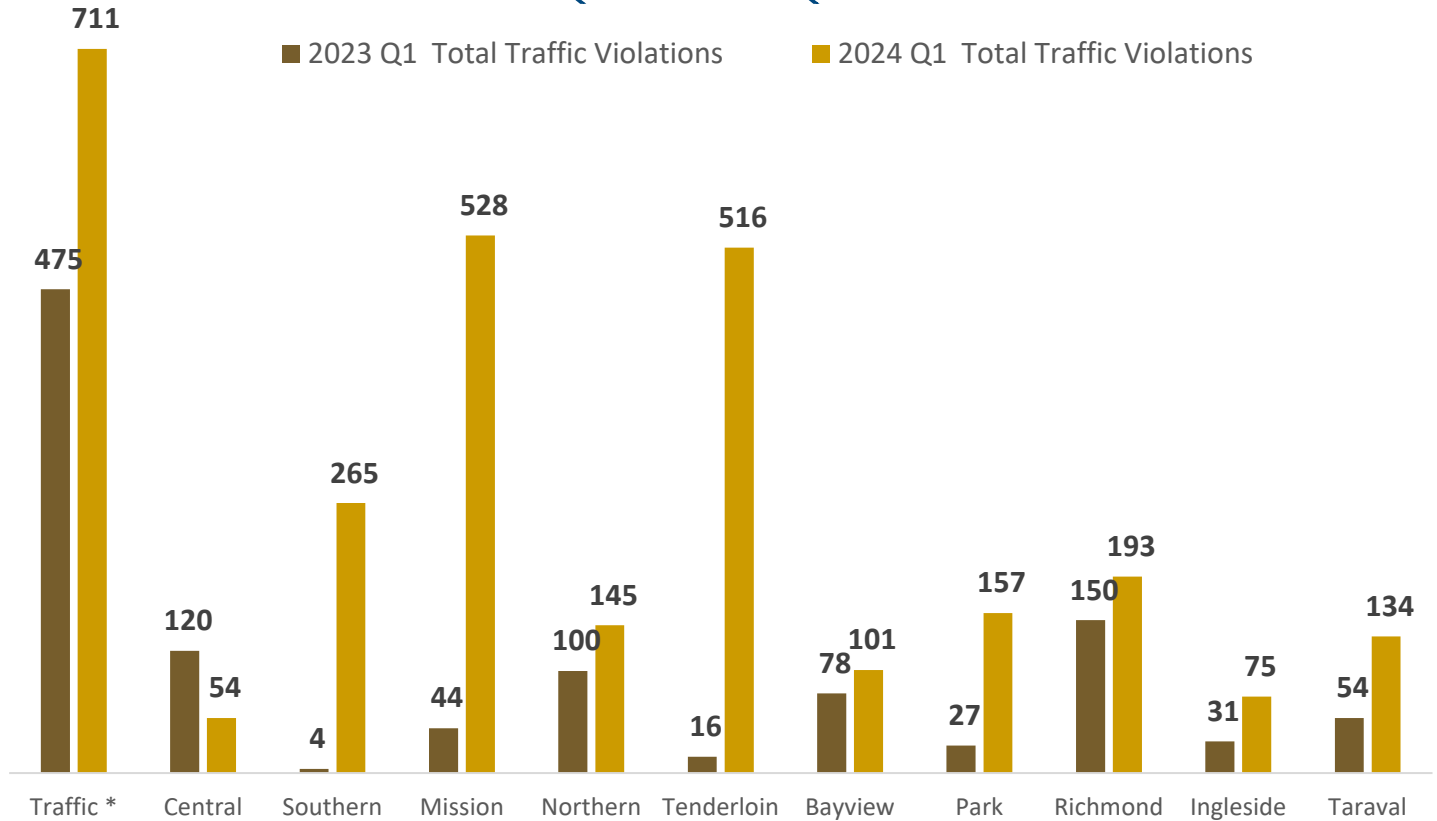
Percentage of Focus on the Five Violations	Traffic *	Central	Southern	Mission	Northern	Tenderloin	Bayview	Park	Richmond	Ingleside	Taraval
	65%	37%	58%	54%	5%	34%	51%	62%	96%	55%	75%

- Overall Department Wide Totals:
- Focus on the Five Totals: 1,581
  - Focus on the Five Percentage: 55%
  - Traffic Violations Totals: 2,879
  - Non-Traffic Violation Totals: 486

\* Refers to the Traffic Company or "The Solos"



## DEPT. WIDE TRAFFIC VIOLATION ISSUANCE BY UNIT 2023 Q1 vs 2024 Q1

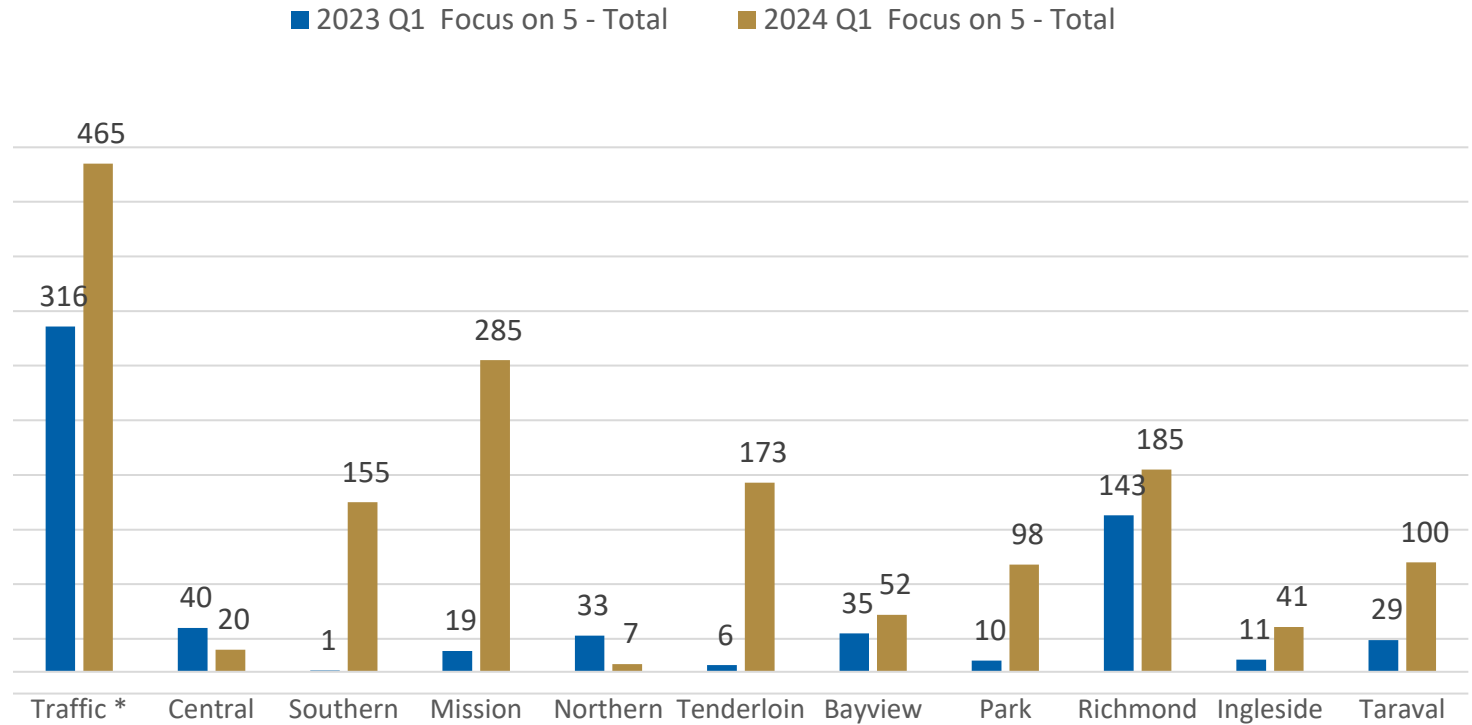


Increase / Decrease (-)	50%	-55%	6525%	1100%	45%	3125%	29%	481%	29%	142%	148%
-------------------------	-----	------	-------	-------	-----	-------	-----	------	-----	------	------

- Overall Department Wide Totals:
- 2023 Q1 Totals: 1,099
  - 2024 Q1 Totals: 2,879
  - Total Increase by 1,780
  - Total Increase by 162%

\* Refers to the Traffic Company or "The Solos"

## FOCUS ON FIVE VIOLATION TOTALS BY UNIT 2023 Q1 vs 2024 Q1



Increase / Decrease (-)	47%	-50%	15400%	1400%	-79%	2783%	49%	880%	29%	273%	245%
-------------------------	-----	------	--------	-------	------	-------	-----	------	-----	------	------

- Overall Department Wide Totals:
- 2023 Q1 Totals: 643
  - 2024 Q1 Totals: 1,581
  - Total Increase by 938
  - Total Increase by 146%

\* Refers to the Traffic Company or "The Solos"

# Vision Zero Strategy



# Enforcement



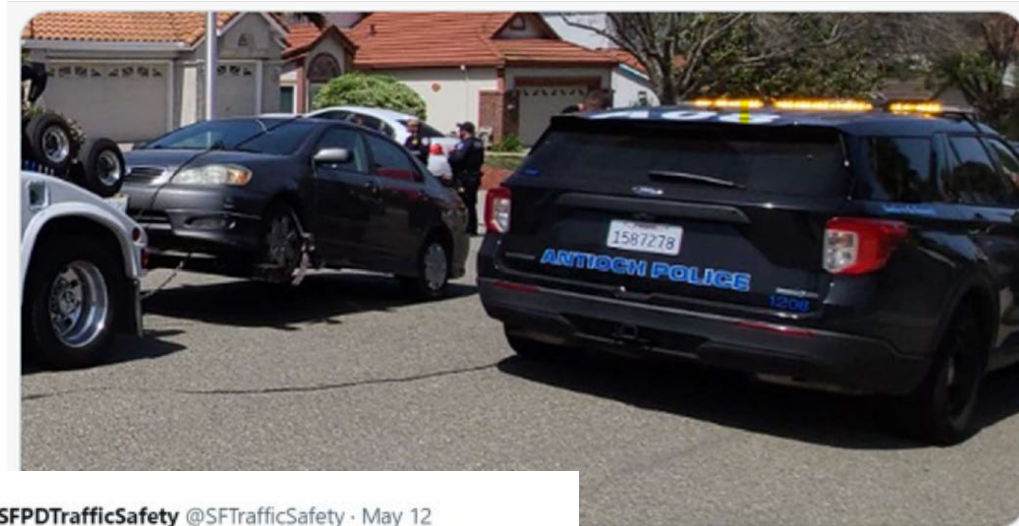
## Partnership

San Francisco Police reposted



**CHP Headquarters** @CHP\_HQ · Sep 26

9/17: @CHPSanFrancisco Area stopped a sideshow on SF/Oakland Bay Bridge. 25+ citations issued, including one for a remote-controlled plate concealer. Sideshows are hazardous and illegal—participation risks arrests, fines, and 30-day impounds. Prioritize safety!



**SFPDTrafficSafety** @SFTrafficSafety · May 12



Thank you.

Questions?



**SF Traffic Fatalities from 1/1/2024 - 3/31/2024**

Fatal Count	Vision Zero	Case Number	Date	Time	Victim Type	Age of Victim	Location	Collision Type	Primary Collision Factor (PCF) *	PCF Description	Hit & Run
1	1	240001933	1/1/24	2026 Hrs	Passenger	42	Junipero Serra/ Palmetto	Solo Vehicle	23152(g)/ 22350 CVC	DUI/ Speeding	No
2	No	240007549	1/4/24	1015 Hrs	Driver	50	S Van Ness/ 18th St	Veh. vs Parked Veh. vs Parked Veh.	21658(a) CVC	Unsafe Lane Change	No
3	2	240067872	1/31/24	0518 Hrs	Pedestrian	63	Fulton/ Arguello	Ped. vs Veh.	21950(c) CVC	Driver/bicyclist to yield right of way at crosswalks	No
4	3	240084274	2/8/24	0106 Hrs	Driver	32	19th/Crespi	Veh. vs Parked Veh.	22350 CVC	Speeding	No
5	4	240084434	2/8/24	0458 Hrs	Pedestrian	31	6th/Bryant	Ped. vs Veh.	21954(a) CVC	Jaywalking	No
6	5	240124870	2/25/24	1840 Hrs	Pedestrian	76	Alemany/ Rousseau	Veh. vs Ped.	21950(a) CVC	Ped. Right of Way	Yes
7	TBD	240137782	3/2/24	0025 Hrs	Pedestrian	41	Golden Gate/Hyde	Veh. vs Ped.	22106 CVC	Unsafe turning, stopping and backing	Yes
8	TBD	240152047	3/8/24	1520 Hrs	Motorcyclist	49	Martin Luther King/ Music Concourse	Solo Vehicle	22350/21800(b)(1)	Speeding/ Failure to yield	No
9	TBD	240169569	3/16/24	1213 Hrs	Pedestrian	40	Ulloa/ West Portal	Veh. vs Ped.	22350/21460(a) CVC	Speeding/ Crossing double yellow lines	No
10	TBD	240169569	3/16/24	1213 Hrs	Pedestrian	38	Ulloa/ West Portal	Veh. vs Ped.	22350/21460(a) CVC	Speeding/ Crossing double yellow lines	No
11	TBD	240169569	3/16/24	1213 Hrs	Pedestrian	1	Ulloa/ West Portal	Veh. vs Ped.	22350/21460(a) CVC	Speeding/ Crossing double yellow lines	No
12	TBD	240169569	3/16/24	1213 Hrs	Pedestrian	0	Ulloa/ West Portal	Veh. vs Ped.	22350/21460(a) CVC	Speeding/ Crossing double yellow lines	No
13	TBD	240201553	3/30/24	1027 Hrs	Driver	85	Diamond/Clipper	Veh. vs Parked Veh.			No

**Note: Total of 10 fatal collisions resulting in 13 victims**

\* Preliminary determination at the time of the collision report was written.

**SF Traffic Fatality: 1/1/24 - 3/31/24**

Victim Role	Total Victims	Vision Zero Victims	Non-Vision Zero Victims	To Be Determined
Pedestrian	8	3	0	5
Driver	3	1	1	1
Passenger	1	1	0	0
Motorcyclist	1	0	0	1
<b>Total</b>	<b>13</b>	<b>5</b>	<b>1</b>	<b>7</b>

**Traffic Fatality Comparison**

Victim Type	2023 Q1	2024 Q1	% Increase/ Decrease(-)
Pedestrian	3	8	167%
Passenger	2	1	-50%
Driver	1	3	200%
Motorcyclist	0	1	100%
<b>Grand Total</b>	<b>6</b>	<b>13</b>	<b>117%</b>

Victim Age	Pedestrian	Driver	Passenger	Motorcyclist	Grand Total	%
< 29	2				2	15.4%
30 - 39	2	1			3	23.1%
40 - 49	2		1	1	4	30.8%
50 - 59	0	1			1	7.7%
60 - 64	1				1	7.7%
≥ 65	1	1			2	15.4%
<b>Total</b>	<b>8</b>	<b>3</b>	<b>1</b>	<b>1</b>	<b>13</b>	<b>100%</b>
<b>%</b>	<b>62%</b>	<b>23%</b>	<b>8%</b>	<b>8%</b>	<b>100%</b>	

Department Wide Traffic Violations Issuance by Division - 1st Quarter of 2024

Period	Unit	Red Light	Stop Sign	Ped Right of Way	Speeding	Failure to Yield w/Turning	Cell Phone	Unlicensed Driver	Suspended License	Ped Offenses	Bike Offenses	Other Traffic Violations	Total Traffic Violations	Focus on Five - Totals	Focus on Five - %	* Non-Traffic Violations
1/1/2024 - 3/31/2024	Traffic	38	171	2	76	178	78	1	1	3	0	163	711	465	65%	100
<b>Subtotal - Metro Division</b>		<b>138</b>	<b>137</b>	<b>23</b>	<b>142</b>	<b>200</b>	<b>40</b>	<b>58</b>	<b>19</b>	<b>16</b>	<b>3</b>	<b>732</b>	<b>1508</b>	<b>640</b>	<b>42%</b>	<b>330</b>
1/1/2024 - 3/31/2024	Central	12	6	0	1	1	0	9	3	1	0	21	54	20	37%	46
	Southern	53	73	7	9	13	5	14	0	4	1	86	265	155	58%	20
	Mission	33	46	14	106	86	27	9	3	4	0	200	528	285	54%	126
	Northern	3	3	0	1	0	1	5	0	0	0	132	145	7	5%	98
	Tenderloin	37	9	2	25	100	7	21	13	7	2	293	516	173	34%	40
<b>Subtotal - Golden Gate Division</b>		<b>32</b>	<b>148</b>	<b>10</b>	<b>258</b>	<b>28</b>	<b>38</b>	<b>21</b>	<b>4</b>	<b>1</b>	<b>3</b>	<b>117</b>	<b>660</b>	<b>476</b>	<b>72%</b>	<b>56</b>
1/1/2024 - 3/31/2024	Bayview	6	24	1	17	4	12	1	1	0	0	35	101	52	51%	11
	Park	8	71	5	6	8	10	7	1	1	2	38	157	98	62%	25
	Richmond	1	0	0	181	3	0	3	0	0	0	5	193	185	96%	17
	Ingleside	2	35	0	4	0	9	5	1	0	1	18	75	41	55%	1
	Taraval	15	18	4	50	13	7	5	1	0	0	21	134	100	75%	2
<b>Dept. Wide Grand Total - 2024 Q1</b>		<b>208</b>	<b>456</b>	<b>35</b>	<b>476</b>	<b>406</b>	<b>156</b>	<b>80</b>	<b>24</b>	<b>20</b>	<b>6</b>	<b>1012</b>	<b>2879</b>	<b>1581</b>	<b>55%</b>	<b>486</b>

\* Not "CVC" and Not "MTRA"

Department Wide Traffic Violations Issuance by Division - 1st Quarter of 2023

Period	Unit	Red Light	Stop Sign	Ped Right of Way	Speeding	Failure to Yield w/Turning	Cell Phone	Unlicensed Driver	Suspended License	Ped Offenses	Bike Offenses	Other Traffic Violations	Total Traffic Violations	Focus on Five - Totals	Focus on Five - %	* Non-Traffic Violations
1/1/2023 - 3/31/2023	Traffic	35	123	8	53	97	22	1	1	1	1	133	475	316	67%	80
<b>Subtotal - Metro Division</b>		<b>27</b>	<b>22</b>	<b>7</b>	<b>28</b>	<b>15</b>	<b>6</b>	<b>19</b>	<b>6</b>	<b>5</b>	<b>0</b>	<b>149</b>	<b>284</b>	<b>99</b>	<b>35%</b>	<b>92</b>
1/1/2023 - 3/31/2023	Central	16	6	4	7	7	2	9	2	0	0	67	120	40	33%	15
	Southern	1	0	0	0	0	0	0	1	0	0	2	4	1	25%	7
	Mission	2	10	3	1	3	1	8	0	3	0	13	44	19	43%	23
	Northern	6	6	0	20	1	3	1	2	0	0	61	100	33	33%	31
	Tenderloin	2	0	0	0	4	0	1	1	2	0	6	16	6	38%	16
<b>Subtotal - Golden Gate Division</b>		<b>31</b>	<b>25</b>	<b>3</b>	<b>158</b>	<b>11</b>	<b>5</b>	<b>11</b>	<b>5</b>	<b>1</b>	<b>0</b>	<b>90</b>	<b>340</b>	<b>228</b>	<b>67%</b>	<b>62</b>
1/1/2023 - 3/31/2023	Bayview	18	7	1	2	7	0	4	3	0	0	36	78	35	45%	26
	Park	0	9	0	0	1	0	1	0	0	0	16	27	10	37%	12
	Richmond	0	0	0	141	2	0	0	2	0	0	5	150	143	95%	9
	Ingleside	2	9	0	0	0	3	3	0	0	0	14	31	11	35%	8
	Taraval	11	0	2	15	1	2	3	0	1	0	19	54	29	54%	7
<b>Dept. Wide Grand Total - 2023 Q1</b>		<b>93</b>	<b>170</b>	<b>18</b>	<b>239</b>	<b>123</b>	<b>33</b>	<b>31</b>	<b>12</b>	<b>7</b>	<b>1</b>	<b>372</b>	<b>1099</b>	<b>643</b>	<b>59%</b>	<b>234</b>

\* Not "CVC" and Not "MTRA"

	2023 Q1	2024 Q1		
Unit	Focus on 5 - Total	Focus on 5 - Total	Increase/ Decrease (-)	% Increase/ Decrease (-)
Traffic *	316	465	149	47%
<b>Subtotal - Metro Division</b>	<b>99</b>	<b>640</b>	<b>541</b>	<b>546%</b>
Central	40	20	-20	-50%
Southern	1	155	154	15400%
Mission	19	285	266	1400%
Northern	33	7	-26	-79%
Tenderloin	6	173	167	2783%
<b>Subtotal - Golden Gate Division</b>	<b>228</b>	<b>476</b>	<b>248</b>	<b>109%</b>
Bayview	35	52	17	49%
Park	10	98	88	880%
Richmond	143	185	42	29%
Ingleside	11	41	30	273%
Taraval	29	100	71	245%
<b>Total</b>	<b>643</b>	<b>1,581</b>	<b>938</b>	<b>146%</b>

Focus on 5 Viols.	Red Light	Stop Sign	Ped Right of Way	Speeding	Failure to Yield w/Turning	Total
<b>2023 Q1</b>	93	170	18	239	123	643
<b>2024 Q1</b>	208	456	35	476	406	1581
Increase/ Decrease (-)	115	286	17	237	283	938
% Increase/ Decrease (-)	124%	168%	94%	99%	230%	146%

Department Wide Traffic Violations Issuance by Division and by Unit: 2023 Q1 vs 2024 Q1

Unit - 2023 Q1	Focus on 5 - Total	Total Traffic Violations	Focus on Five %	Non- Traffic Violations
Traffic *	316	475	67%	80
<b>Subtotal - Metro Division</b>	<b>99</b>	<b>284</b>	<b>35%</b>	<b>92</b>
Central	40	120	33%	15
Southern	1	4	25%	7
Mission	19	44	43%	23
Northern	33	100	33%	31
Tenderloin	6	16	38%	16
<b>Subtotal - Golden Gate Division</b>	<b>228</b>	<b>340</b>	<b>67%</b>	<b>62</b>
Bayview	35	78	45%	26
Park	10	27	37%	12
Richmond	143	150	95%	9
Ingleside	11	31	35%	8
Taraval	29	54	54%	7
<b>Total</b>	<b>643</b>	<b>1,099</b>	<b>59%</b>	<b>234</b>

Unit - 2024 Q1	Focus on 5 - Total	Total Traffic Violations	Focus on Five %	Non- Traffic Violations
Traffic *	465	711	65%	100
<b>Subtotal - Metro Division</b>	<b>640</b>	<b>1,508</b>	<b>42%</b>	<b>330</b>
Central	20	54	37%	46
Southern	155	265	58%	20
Mission	285	528	54%	126
Northern	7	145	5%	98
Tenderloin	173	516	34%	40
<b>Subtotal - Golden Gate Division</b>	<b>476</b>	<b>660</b>	<b>72%</b>	<b>56</b>
Bayview	52	101	51%	11
Park	98	157	62%	25
Richmond	185	193	96%	17
Ingleside	41	75	55%	1
Taraval	100	134	75%	2
<b>Total</b>	<b>1,581</b>	<b>2,879</b>	<b>55%</b>	<b>486</b>

	2023 Q1	2024 Q1		
Unit	Focus on 5 - Total	Focus on 5 - Total	Increase/ Decrease (-)	% Increase/ Decrease (-)
Traffic *	316	465	149	47%
<b>Subtotal - Metro Division</b>	<b>99</b>	<b>640</b>	<b>541</b>	<b>546%</b>
Central	40	20	-20	-50%
Southern	1	155	154	15400%
Mission	19	285	266	1400%
Northern	33	7	-26	-79%
Tenderloin	6	173	167	2783%
<b>Subtotal - Golden Gate Division</b>	<b>228</b>	<b>476</b>	<b>248</b>	<b>109%</b>
Bayview	35	52	17	49%
Park	10	98	88	880%
Richmond	143	185	42	29%
Ingleside	11	41	30	273%
Taraval	29	100	71	245%
<b>Total</b>	<b>643</b>	<b>1,581</b>	<b>938</b>	<b>146%</b>

	2023 Q1	2024 Q1		
Unit	Total Traffic Violations	Total Traffic Violations	Increase/ Decrease (-)	% Increase/ Decrease (-)
Traffic *	475	711	236	50%
<b>Subtotal - Metro Division</b>	<b>284</b>	<b>1508</b>	<b>1224</b>	<b>431%</b>
Central	120	54	-66	-55%
Southern	4	265	261	6525%
Mission	44	528	484	1100%
Northern	100	145	45	45%
Tenderloin	16	516	500	3125%
<b>Subtotal - Golden Gate Division</b>	<b>340</b>	<b>660</b>	<b>320</b>	<b>94%</b>
Bayview	78	101	23	29%
Park	27	157	130	481%
Richmond	150	193	43	29%
Ingleside	31	75	44	142%
Taraval	54	134	80	148%
<b>Total</b>	<b>1,099</b>	<b>2,879</b>	<b>1,780</b>	<b>162%</b>

	2023 Q1	2024 Q1	2023 Q1	2024 Q1
Unit	Focus on 5 - Totals	Focus on 5 - Totals	Focus on Five - %	Focus on Five - %
Traffic *	316	465	67%	65%
<b>Subtotal - Metro Division</b>	<b>99</b>	<b>640</b>	<b>35%</b>	<b>42%</b>
Central	40	20	33%	37%
Southern	1	155	25%	58%
Mission	19	285	43%	54%
Northern	33	7	33%	5%
Tenderloin	6	173	38%	34%
<b>Subtotal - Golden Gate Division</b>	<b>228</b>	<b>476</b>	<b>67%</b>	<b>72%</b>
Bayview	35	52	45%	51%
Park	10	98	37%	62%
Richmond	143	185	95%	96%
Ingleside	11	41	35%	55%
Taraval	29	100	54%	75%
<b>Total</b>	<b>643</b>	<b>1,581</b>	<b>59%</b>	<b>55%</b>

	2023 Q1	2024 Q1	
Unit	% Focus on 5 - 2023 Q1	% Focus on 5 - 2023 Q1	% Change
Traffic *	66.5%	65.4%	-1.1%
<b>Subtotal - Metro Division</b>	<b>35%</b>	<b>42%</b>	<b>8%</b>
Central	33.3%	37.0%	3.7%
Southern	25.0%	58.5%	33.5%
Mission	43.2%	54.0%	10.8%
Northern	33.0%	4.8%	-28.2%
Tenderloin	37.5%	33.5%	-4.0%
<b>Subtotal - Golden Gate Division</b>	<b>67%</b>	<b>72%</b>	<b>5%</b>
Bayview	44.9%	51.5%	6.6%
Park	37.0%	62.4%	25.4%
Richmond	95.3%	95.9%	0.5%
Ingleside	35.5%	54.7%	19.2%
Taraval	53.7%	74.6%	20.9%
<b>Total</b>	<b>58.5%</b>	<b>54.9%</b>	<b>-3.6%</b>