

San Francisco Water Department (formerly City Distribution Division) at 2000 Marin Street
Recommended Artist/Proposal | Visual Arts Committee | Wednesday, April 16, 2024



**SFWD at 2000 Marin Public Art Project
Artist Review Process to Date**

SFAC Public Project Plan Approval
January 19, 2022

Artist Request for Qualifications
February 7 – August 22, 2022

Artist Qualification Panel
December 12, 2022

New Project Architect Mark Cavagnero Associates (MCA) Onboarding
February 2023 – August 2023

MCA Presentation of Updated Project Design to SFAC
September 18, 2023

Artist Review Panel One
October 26, 2023

Artist Orientation
December 7, 2023

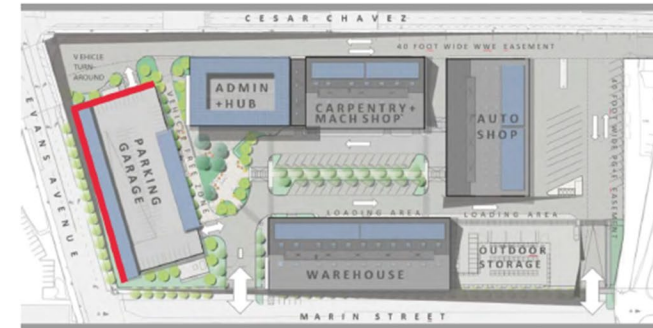
Conceptual Design Proposals Due
March 4, 2024

Proposal Public Comment Period
March 8 – March 25

Final Artist Review Panel
March 27



**SFPUC'S CITY DISTRIBUTION DIVISION (CDD) AT 2000 MARIN ST.
PUBLIC ART PROJECT PLAN**



BACKGROUND (CAPITAL IMPROVEMENT PROJECT OVERVIEW)

San Francisco Public Works is currently designing a new location for the San Francisco Public Utilities Commission's (SFPUC) City Distribution Division (CDD) at 2000 Marin Street, along the Islais Creek watershed. CDD manages the City's water distribution, including maintenance of 1250 miles of water mains, 12 reservoirs and 9 pump stations. The project will replace CDD's existing location at 1990 Newcomb Avenue. The campus will include administrative offices, an auto-shop, warehouse, meter shop, and a six-story, 244,000 square foot parking garage with 570 vehicle capacity. Community green space will be built outside the administrative office by parking for thirty-five large vehicles. The administrative offices will include space for engineers, business, operations, and retail management.

ART OPPORTUNITY

In consultation with the SFPUC, the Arts Commission has identified the North and West façades of the parking garage as the optimal public art location. This is an opportunity for an artist to architecturally integrate an artwork into the two façades. The following are the approximate areas for an artwork: North façade at 43 feet high by 134 feet wide, and West façade at 43 feet high by 300 feet wide. The artwork will be highly visible along Cesar Chavez and Evans Avenue, and will constitute a monumental artwork for the surrounding Potrero Hill, Dogpatch and Islais Creek neighborhoods.

San Francisco Water Department at 2000 Marin Public Art Project

- Artwork that is architecturally integrated into the North and West façades of the CDD Parking Garage.
- Will be highly visible along Cesar Chavez and Evans Avenue, and constitute a monumental, landmark artwork for the surrounding Potrero Hill, Dogpatch and Islais Creek neighborhoods.

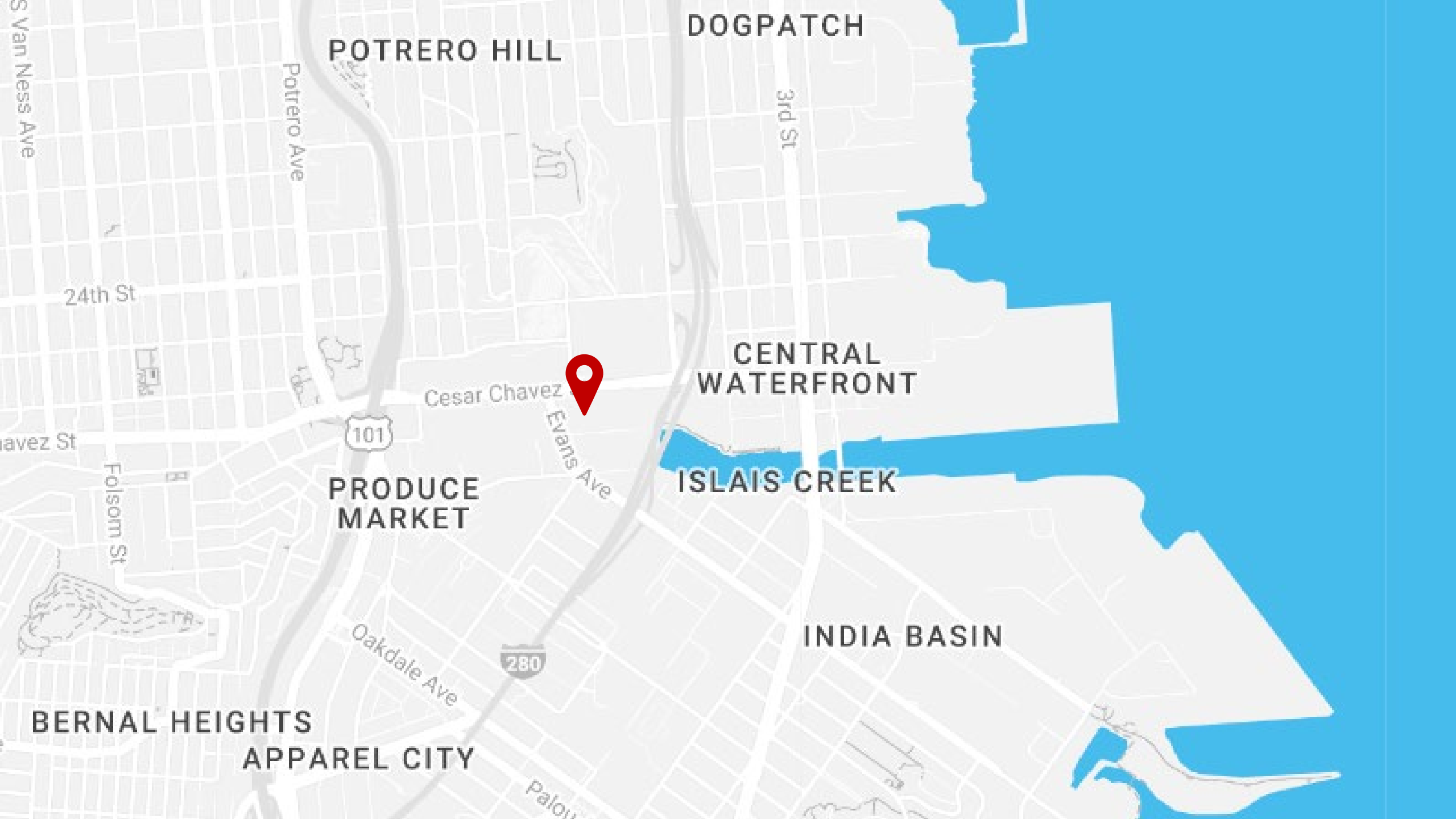
Project Goal

A site-specific, landmark artwork that is inspired by water, and reflects the activities of the SFPUC's City Distribution Division.

Art Enrichment Budget

Art	\$ 2,394,000 (70%)
Administration	\$ 684,000 (20%)
Conservation	\$ 342,000 (10%)
ART ENRICHMENT TOTAL	\$ 3,420,000
Internal Contingency	\$ 234,850
Artist Selection	\$ 25,650
Field Expenses	\$ 5,000
Photography + Signage	\$ 7,000
Materials Assessment	\$ 1,500
SUBTOTAL ART EXPENSES	\$ 39,150
Site Work/Preparation	\$ 260,000
TOTAL ARTWORK BUDGET	\$ 1,860,000*

** An architectural credit of \$150 per square foot will be applied to the artist in the areas where it replaces the existing/proposed metal fins on the building's façade.*



POTRERO HILL

DOGPATCH

CENTRAL WATERFRONT

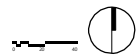
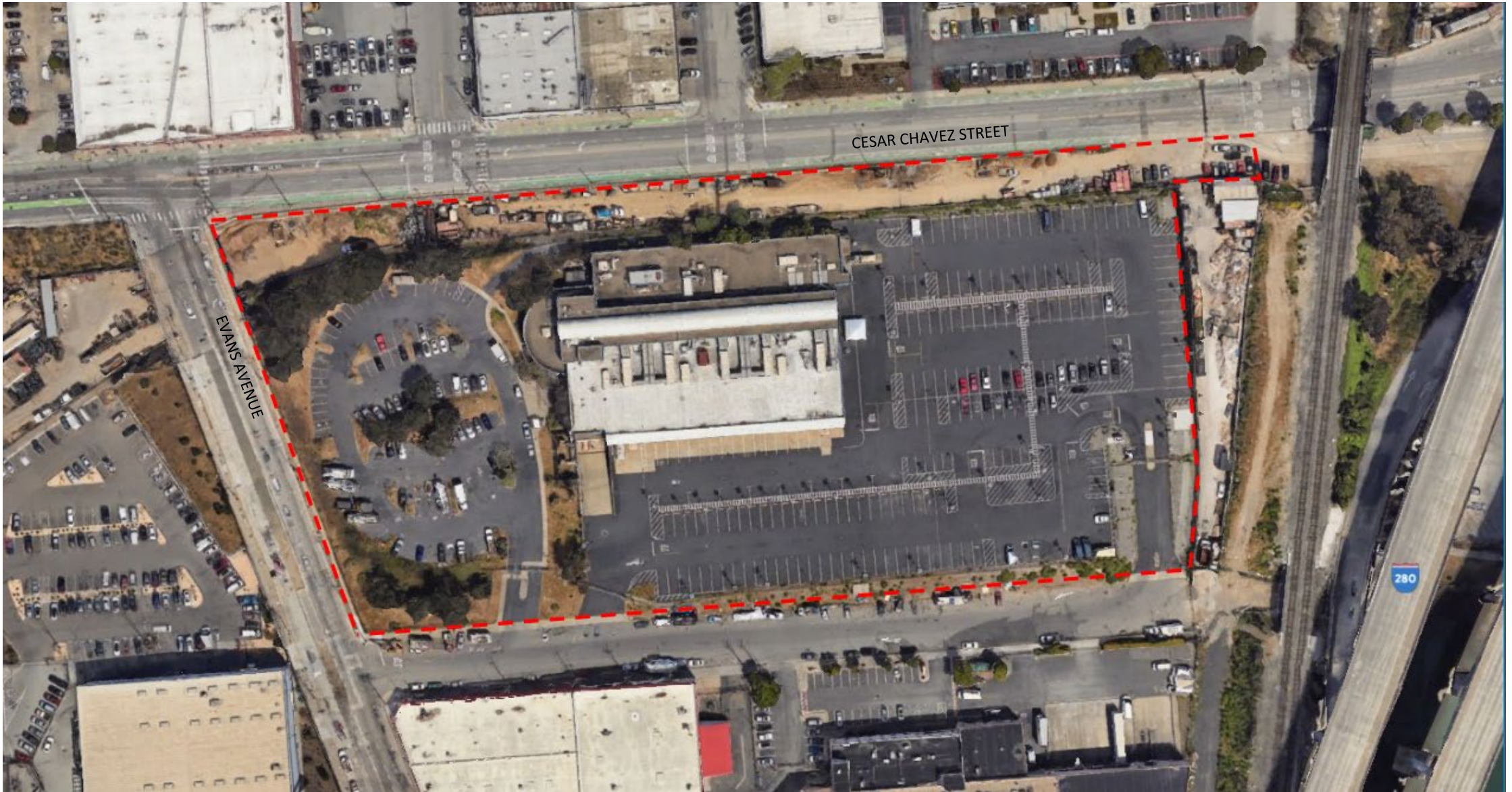
PRODUCE MARKET

ISLAIS CREEK

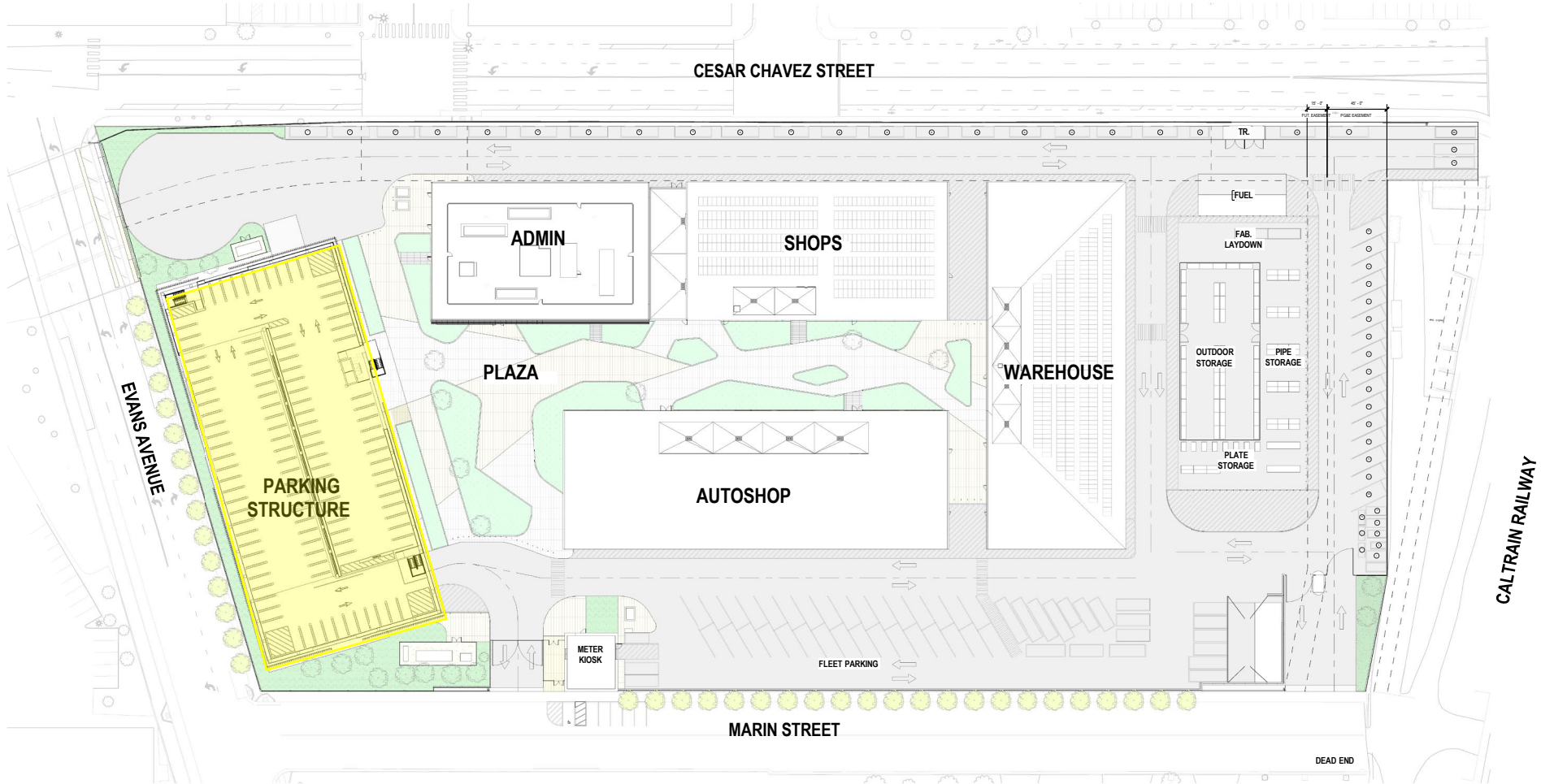
INDIA BASIN

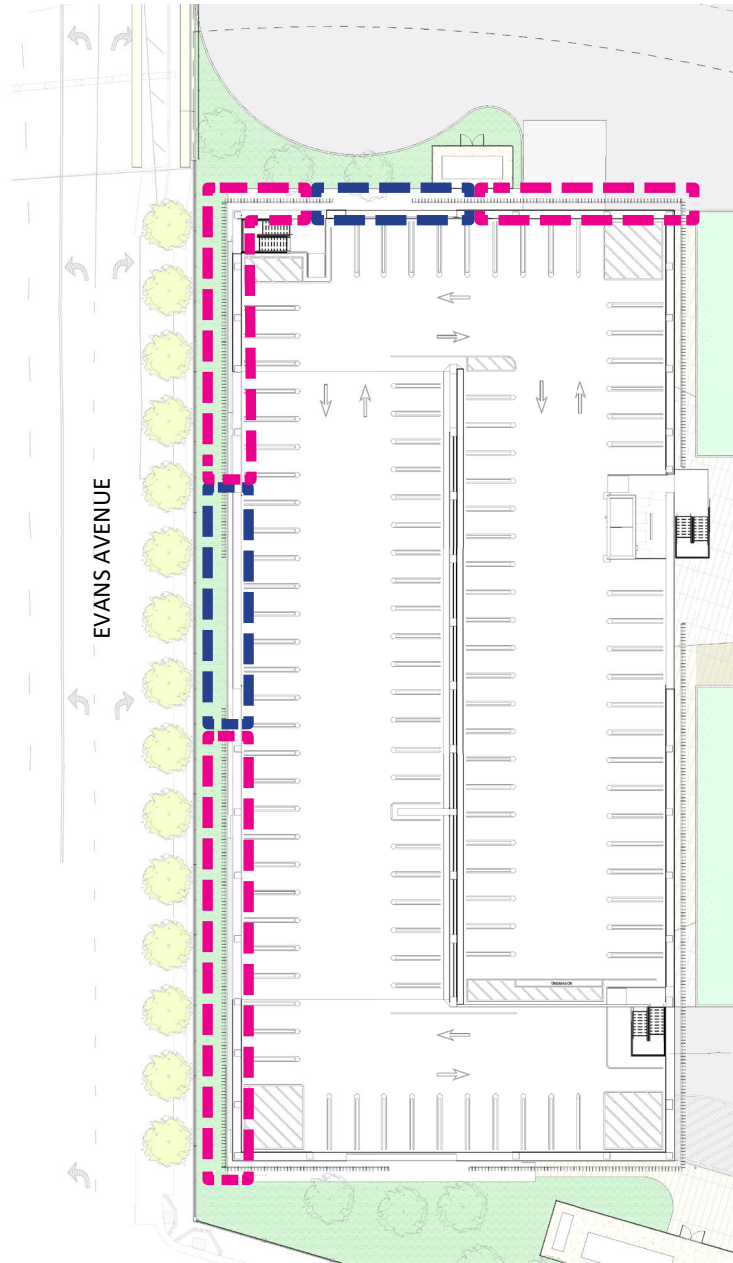
BERNAL HEIGHTS
APPAREL CITY



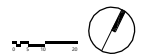






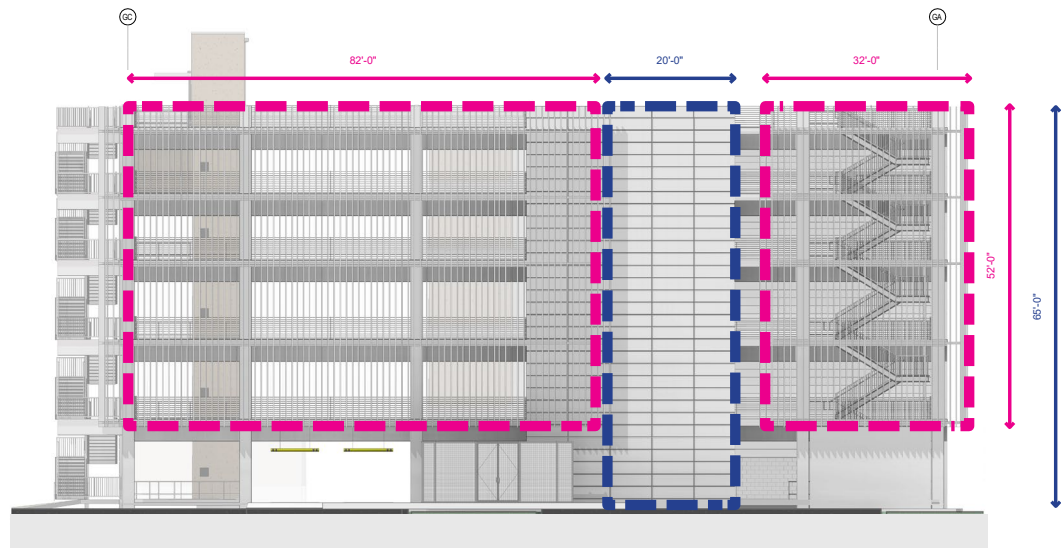


EVANS AVENUE





ELEVATION - WITHOUT FINS



ELEVATION - WITH FINS

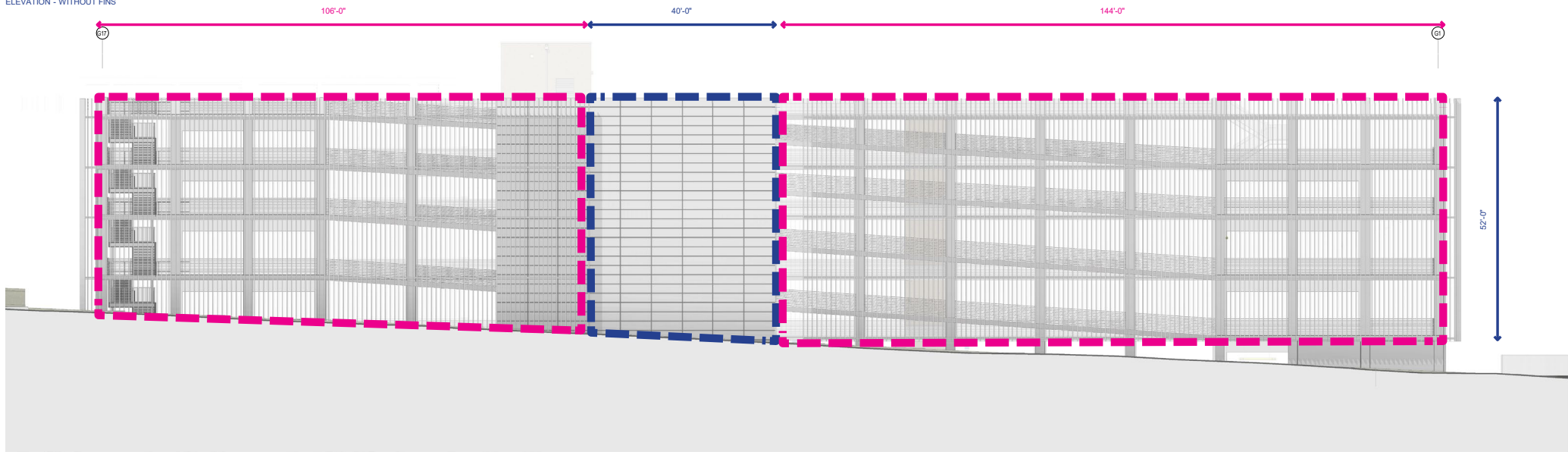


CONCRETE SHEAR WALL

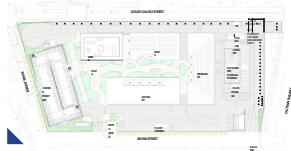
FIN SCREEN

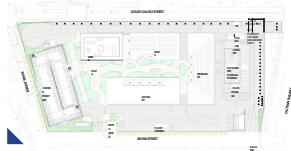


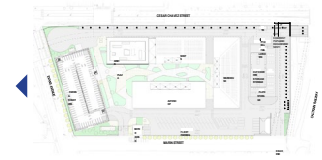
ELEVATION - WITHOUT FINS

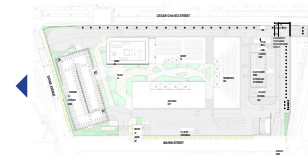


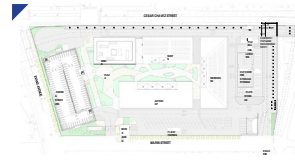
ELEVATION - WITH FINS

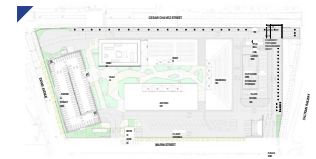












PANEL TWO PROCESS

1. Presentation of proposals by each finalist followed by questions from panelists.
2. Summary of public comment received during proposal display.
3. Staff report on artist reference checks.
4. Panel discussion of each proposal, followed by scoring based on criteria.
5. Staff tallies votes and announces results.
6. Panel recommendation presented to Visual Arts Committee and Full Commission for approval.

SCORING CRITERIA

1. Artistic Merit (1 – 10)

- a. Originality of concept and vision
- b. Degree to which work engages the viewer emotionally, intellectually, spiritually
- c. Quality of craftsmanship or mastery of skills and techniques

2. Relevant Skills and Experience (1 – 10)

- a. Assessed ability of artist to successfully implement a proposed project, such as the ability to work constructively with other project stakeholders, meet deadlines, willingness to resolve issues as they arise, and generally manage the demands of the project.
- b. Cultural competency and/or significant connection between the artist and the project constituency, or experience that may particularly qualify an artist to meet project goals may also be considered.

3. Meets Goals of the Project and the Civic Art Collection. (1 – 10)

4. Appropriate to Site (1 – 10)

- a. Proposed artwork is appropriate for its intended display location in terms of scale, media, design or imagery and is judged to be relevant within the context of the surrounding community, and is compatible with the mission and operations of the client department

5. Feasibility and Maintainability (1 – 10)

- a. Artwork evaluated relative to its feasibility and evidence of the artist's ability to successfully complete the work as proposed. Factors to be considered include, but are not limited to: project budget, timeline, and the artist's experience.
- b. Due consideration shall be given to the structural and surface soundness, and to inherent resistance to theft, vandalism and weathering, and to the cost and amount of ongoing maintenance and/or repair anticipated.

THOSE WHO CARRY WATER

An art proposal by Walter Kitundu for the San Francisco Water Department at 2000 Marin Street

"The water we drink, like the air we breathe, is not a part of our body, but is our body. What we do to one - to the body, to the water - we do to the other." - Natalie Diaz

Those Who Carry Water is a site-specific portrait of the water system, the people who sustain it, and the community through which the water flows. The images will be made of architectural float glass panels with brilliant enamel colors. Every image will be made from photographs of water taken at locations in the system managed or made possible by the SFJWC, from Hetch Hetchy to powerhouses, from public pools to treatment plants, Kitundu will photograph those who care for water systems, as well as the people of Bayview, whose silhouettes will appear in the glass.

The artist will be in conversation with Bayview residents and SFJWC employees to learn about their relationships with water and the water system. He will be joined in this story gathering work by long-time collaborator and member of the Bayview community, choreographer **Joanna Halgood**. They will develop an aerial dance performance for the opening of the new building by respectfully being the water stories of Bayview residents to life.

The idea of carrying water is an expansive way to think about our relationships with it. We carry it every day in our cells and bones. So do the fish, birds, elk, and mountain lions of California. The SFJWC has shaped the land to carry water in the form of reservoirs. That water is sent through pipes to generate power and sustain a population that wouldn't be possible without the systems that carry water. This artwork is a monument to the truth that we are water and water is us. We have a responsibility to care for what we carry, to honor the central role it plays in our lives, without taking our easy access to it for granted. This artwork honors, honors, and shines a light on the many ways we carry water.

Selected lines from the stories we receive will adorn the images inside the garage, creating interior poems weaving together slices from multiple communities.

Simple images merging water with people and other beings.

The path of the Tuolumne River runs through the artwork. A thread that connects images from all aspects of the system.

The artwork will be mounted with a secure and low profile pointed supported system.

Hughes/Starkweather | Confluent Systems

ART PROPOSAL FOR THE SAN FRANCISCO WATER DEPARTMENT AT 2000 MARIN STREET

Local artists Hughes/Starkweather propose to create a site-specific, timeless artwork for the San Francisco Water Department that reflects the interconnectedness between water and infrastructure.

The layered metal artwork **Confluent Systems** makes visible what is often invisible: essential systems that make life in the city possible. As water moves and morphs through landscapes above and below ground, and in and out of engineered systems, this artwork reflects the structures that enable the delivery of water, including miles of pipes that must be maintained and repaired and the waterheds and aquifers that are the source of San Francisco's clean drinking water.

Shapes and lines in the artwork reference maps of the adjacent Bayview and Potrero Hill neighborhoods, local reservoirs, the Bay Shoreline, hydro-power lines, Sibley Creek, water pipes, underground aquifers, the Hetch Hetchy system, and the Tuolumne watershed. **Confluent Systems** encourages appreciation for the complex, engineered, and natural systems that support the thriving urban environment of San Francisco and the stewardship of shared resources.

LAYERED METAL PANELS AND SUPPORT STRUCTURE

- Bottom layer: metal panels
- Middle layer: galvanized metal panels
- Top layer: perforated metal panels

DETAIL OF LAYERED METAL PANELS

SOURCE MATERIALS

- Map of water pipes and support structure
- ARTWORK LOCATION
- HAAS CREEK NEIGHBORHOOD OVERVIEW
- TUOLUMNE RIVER WATERSHED
- HETCH HETCHY SYSTEM

Favianna Rodriguez

Art Proposal for the San Francisco Water Department at 2000 Marin Street

TIDES OF TRANSFORMATION:

Reshaping San Francisco's Water Legacy

This artwork is about reimagining our relationship to water by rethinking and healing. Through symbols, color and texture, I will tell the story of three powerful forces that have shaped San Francisco's water system. First, I will depict the story of water itself and how it moves from the natural world to our city. Second, I will depict the story of SFJWC's water workers who are fundamental to water operations and who organized for better working facilities. Third, I will depict the story of the Black leaders in the Bayview Hunters Point community who organized for change and justice around the water system.

Artist Symbols and Colors

- Water
- Land
- Community
- Justice

North Wall Scale 100' x 11'

West Wall Scale 100' x 11'

Proposed Materials

Duplicating the qualities of paper collage at an architectural scale through experimentation with layered metal patterning, color, texture, and depth. Materials to be sampled and tested. Color conservation will be given to longevity of color, material, weight, structural performance, maintenance and depth.

Inclusive Community Engagement

In order to create my artwork, I will lead interviews and hands-on art workshops with local stakeholders, community advocates, labor leaders, environmentalists, and social justice organizers.

Community Benefit: A Fellowship for Reimagining our Relationship to Water through a lens of Climate Justice. I will also launch a 3-4 month artist fellowship for five local Bayview - Hunters Point artists to convene, learn and create art about our relationship to water and how land use policies have shaped our experience with water bodies and energy systems.

In collaboration with **S+D**

WATERLINES

ART PROPOSAL FOR THE SAN FRANCISCO WATER DEPARTMENT AT 2000 MARIN ST.

RENEE HUBBARD, ELIZABETH ANDERSON, LEE

Our proposal is inspired by the major water bodies that deliver water to the people of San Francisco and the unique interplay of the natural world and the built environment. We envision a series of layered metal panels that will reflect the different ways water moves through the city, from the natural world to the built environment. The artwork will be a series of layered metal panels that will reflect the different ways water moves through the city, from the natural world to the built environment.

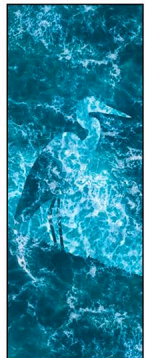
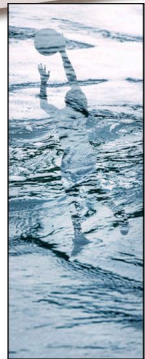
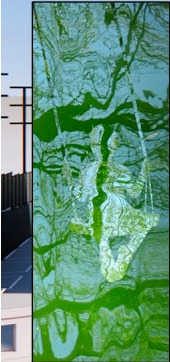
JOYRIDE OF THE SAN FRANCISCO WATER SYSTEM

Final imagery of materials will be provided by a local professional photographer from San Francisco.

THOSE WHO CARRY WATER

An art proposal by Walter Kitundu
for the San Francisco Water Department
at 2000 Marin Street

“The water we drink, like the air we breathe,
is not a part of our body, but is our body.
What we do to one - to the body,
to the water - we do to the other.”
~ Natalie Diaz



Those Who Carry Water is a site specific portrait of the water system, the people who sustain it, and the community through which the water flows. The images will be made of architectural float glass panels with brilliant enamel colors. Every image will be made from photographs of water taken at locations in the system managed or made possible by the SFPUC. From Hetch Hetchy to powerhouses, from public pools to treatment plants, Kitundu will photograph those who care for water systems, as well as the people of Bayview, whose silhouettes will appear in the glass.

The artist will be in conversation with Bayview residents and SFPUC employees to learn about their relationships with water and the water system. He will be joined in this story gathering work by long-time collaborator and member of the Bayview community, choreographer **Joanna Haigood**. They will develop an aerial dance performance for the opening of the new building to spectacularly bring the water stories of Bayview residents to life.

The idea of carrying water is an expansive way to think about our relationships with it. We carry it everyday in our cells and bones. So do the fish, birds, elk, and mountain lions of California. The SFPUC has shaped the land to carry water in the form of reservoirs. That water is sent through pipes to generate power and sustain a population that wouldn't be possible without the systems that carry water. This artwork is a monument to the truth that we are water and water is us. We have a responsibility to care for what we carry, to honor the central role it plays in our lives, without taking our easy access to it for granted. This artwork explores, honors, and shines a light on the many ways we carry water.

Selected lines from the stories we receive will adorn the images inside the garage, creating an interior poem weaving together ideas from multiple communities.

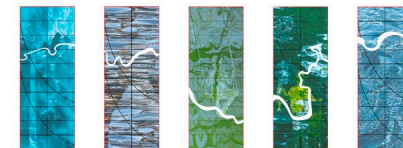
< sample images merging water with people and other beings



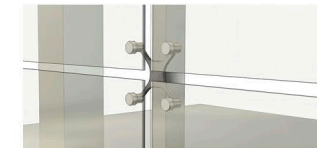
NORTH ELEVATION



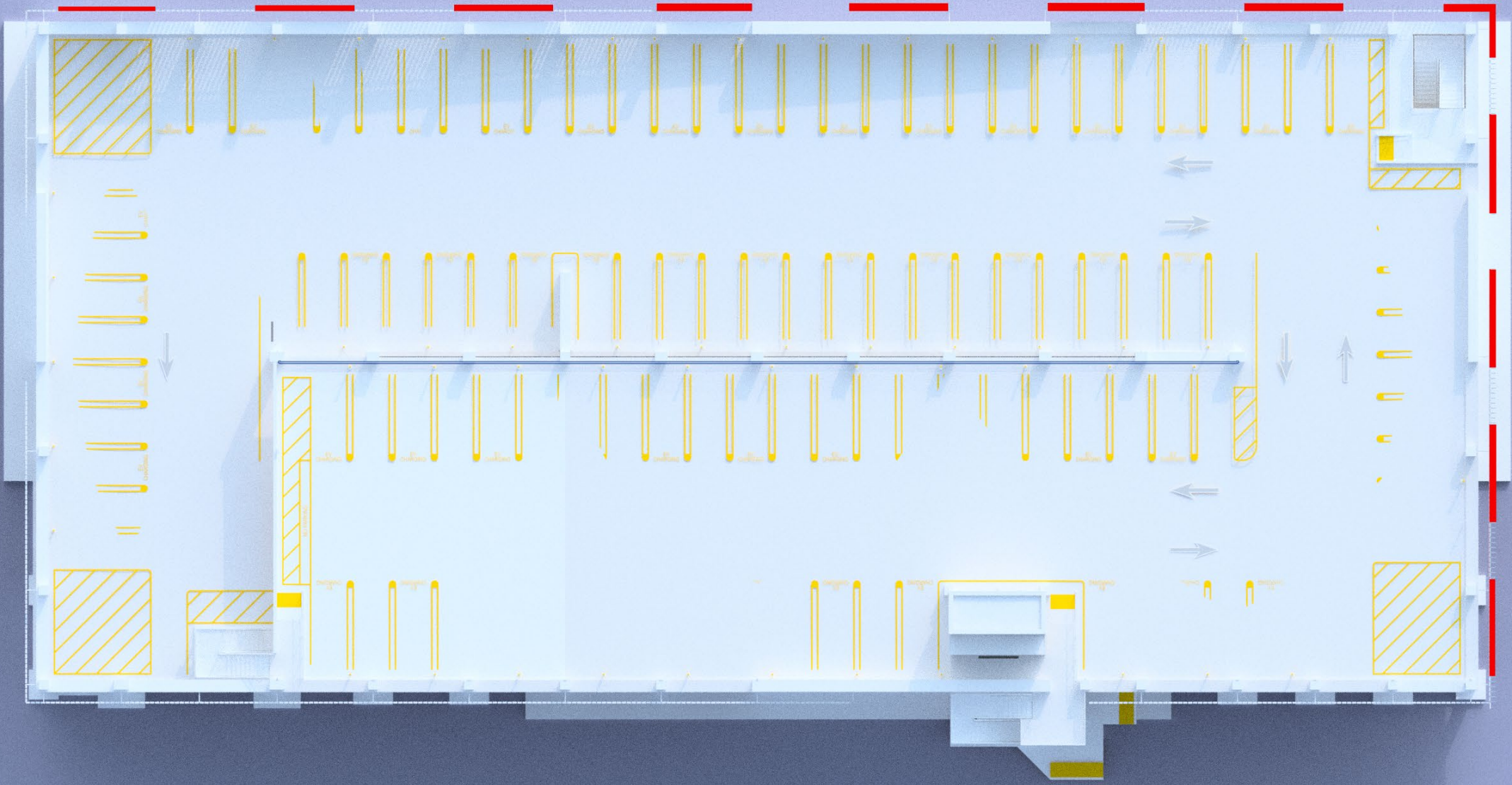
WEST ELEVATION



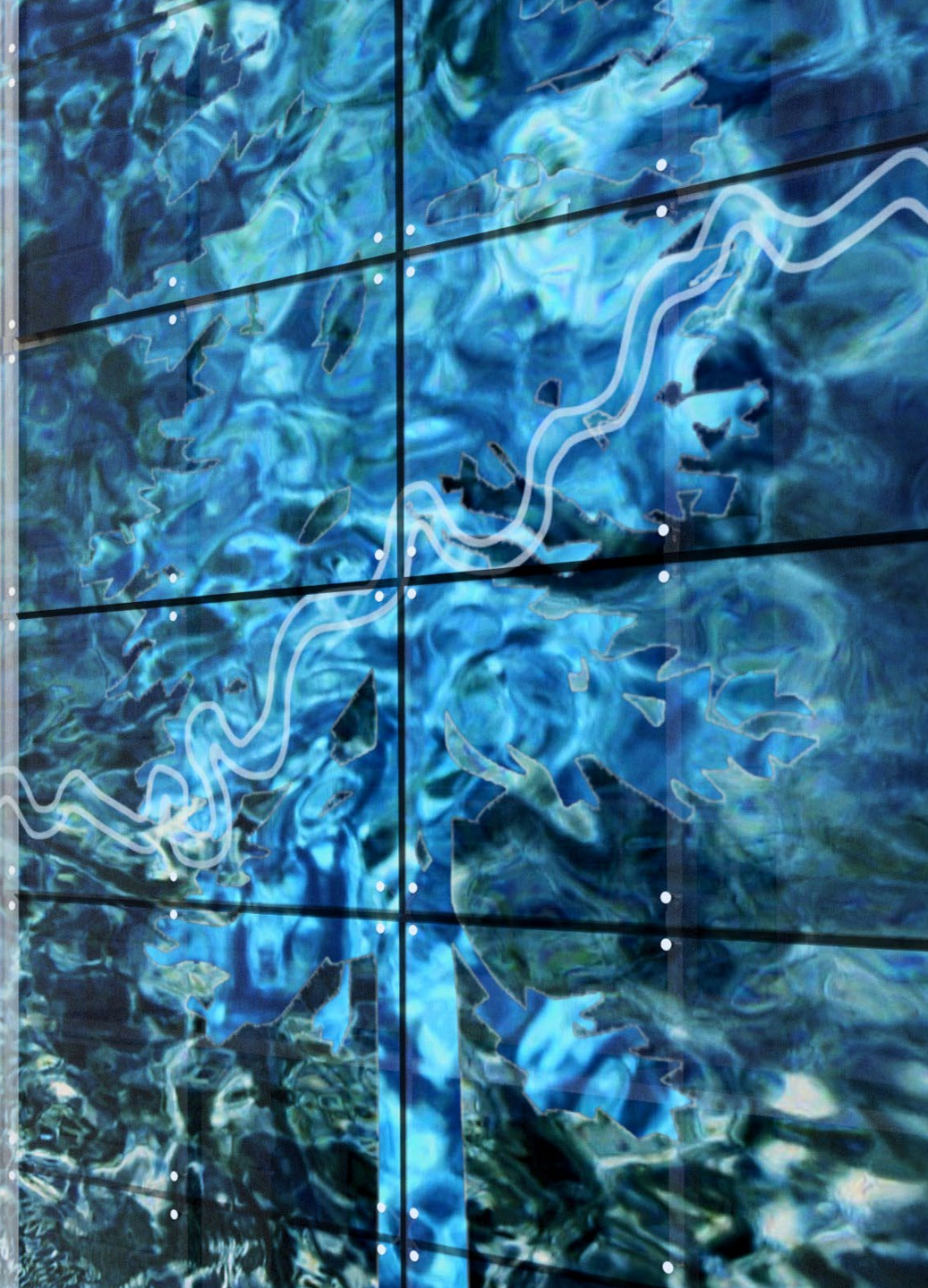
The path of the Tuolumne River runs through the artwork. A thread that connects images from all aspects of the system



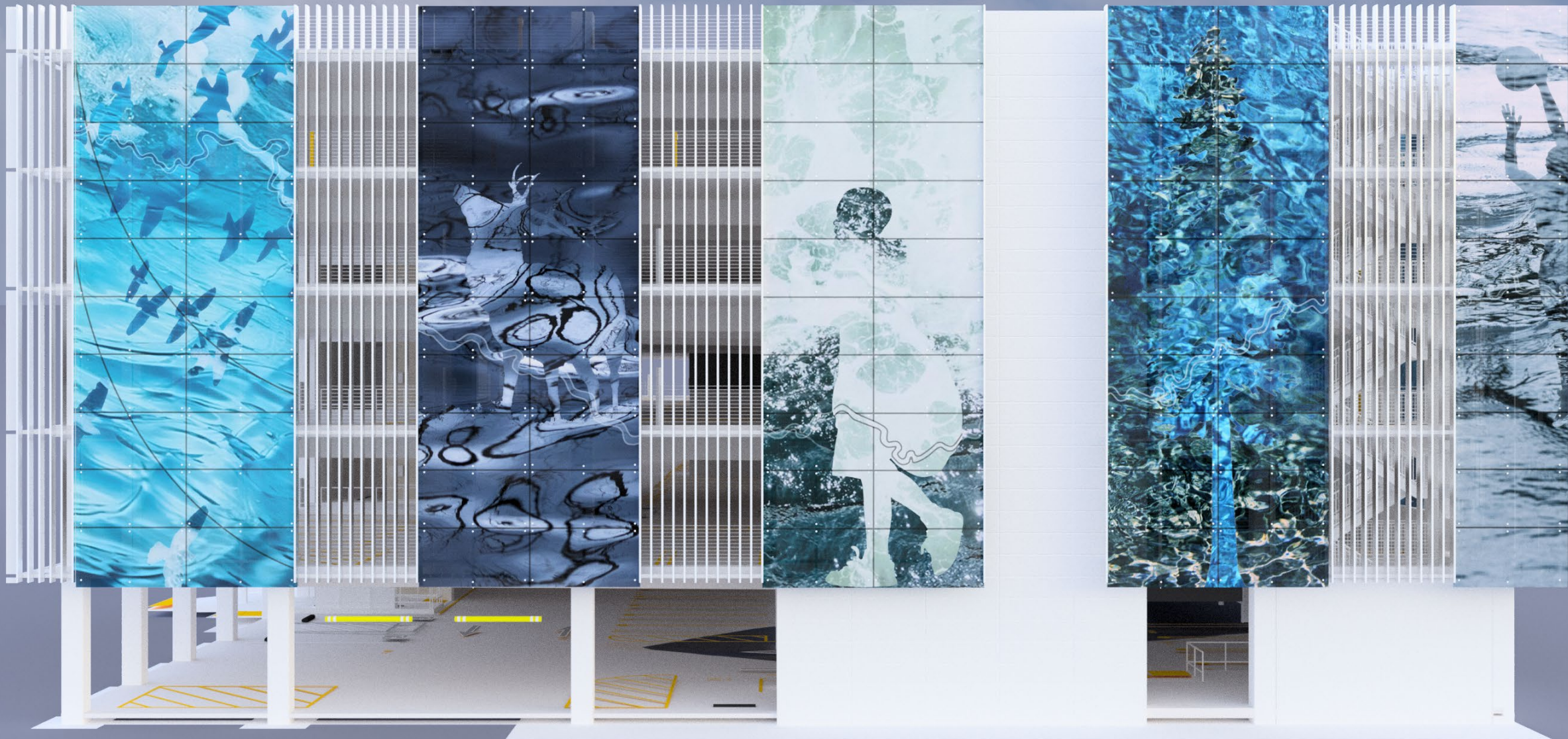
The artwork will be mounted with a secure and low profile pointed supported system.



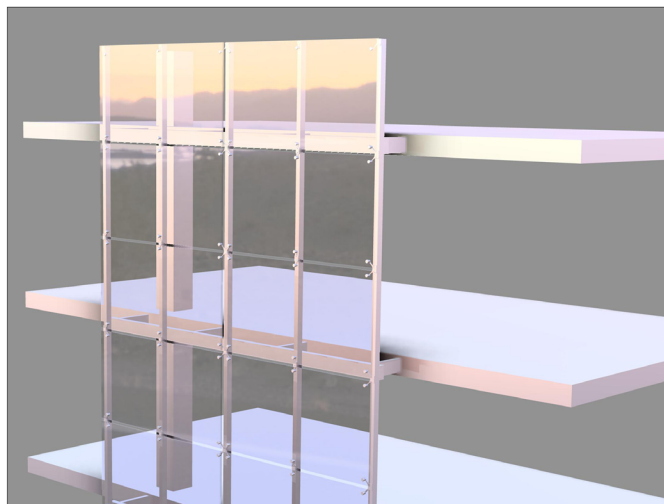
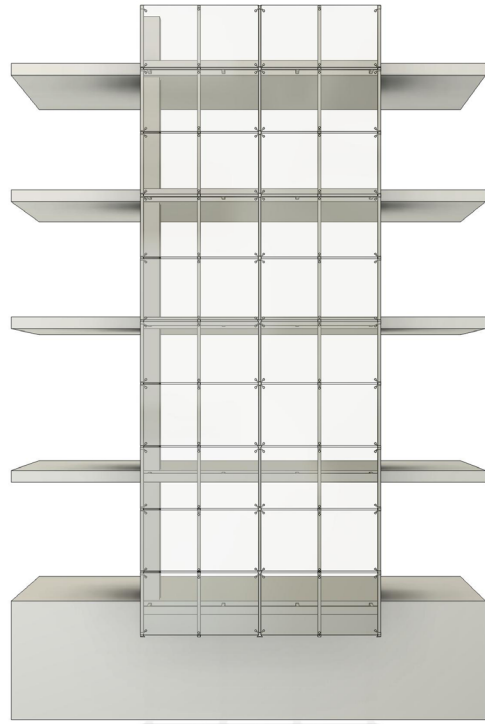
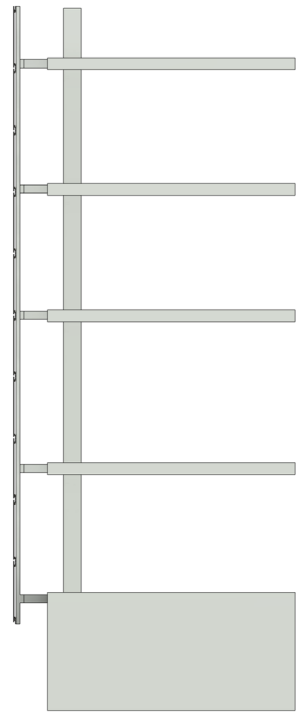








Kitundu Studio
Pointed Support System for Art Glass
Those Who Carry Water - SF WATER 2000 MARIN





The water we drink,
like the air we breathe,
is not a part of our
body, but is our body.

The water we drink,
like the air we breathe,
is not a part of our
body, but is our body.





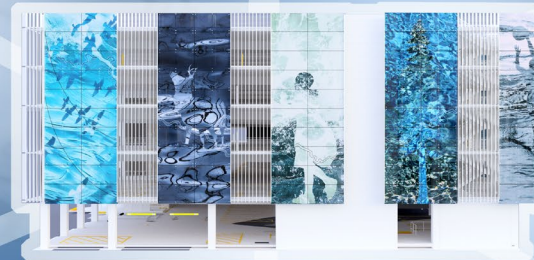
Southeast Community Center



Zaccho Dance Theatre



Bayview Public Library



2000 Marin St



SFPUC Employees and Bayview Residents



Lands and Waters

