

San Francisco Water Department (formerly City Distribution Division) at 2000 Marin Street  
Recommended Artist/Proposal | Executive Committee | Wednesday, April 24, 2024



**SFWD at 2000 Marin Public Art Project  
Artist Review Process to Date**

**SFAC Public Project Plan Approval**  
January 19, 2022

**Artist Request for Qualifications**  
February 7 – August 22, 2022

**Artist Qualification Panel**  
December 12, 2022

**New Project Architect Mark Cavagnero Associates (MCA) Onboarding**  
February 2023 – August 2023

**MCA Presentation of Updated Project Design to SFAC**  
September 18, 2023

**Artist Review Panel One**  
October 26, 2023

**Artist Orientation**  
December 7, 2023

**Conceptual Design Proposals Due**  
March 4, 2024

**Proposal Public Comment Period**  
March 8 – March 25

**Final Artist Review Panel**  
March 27



**SFPUC'S CITY DISTRIBUTION DIVISION (CDD) AT 2000 MARIN ST.  
PUBLIC ART PROJECT PLAN**

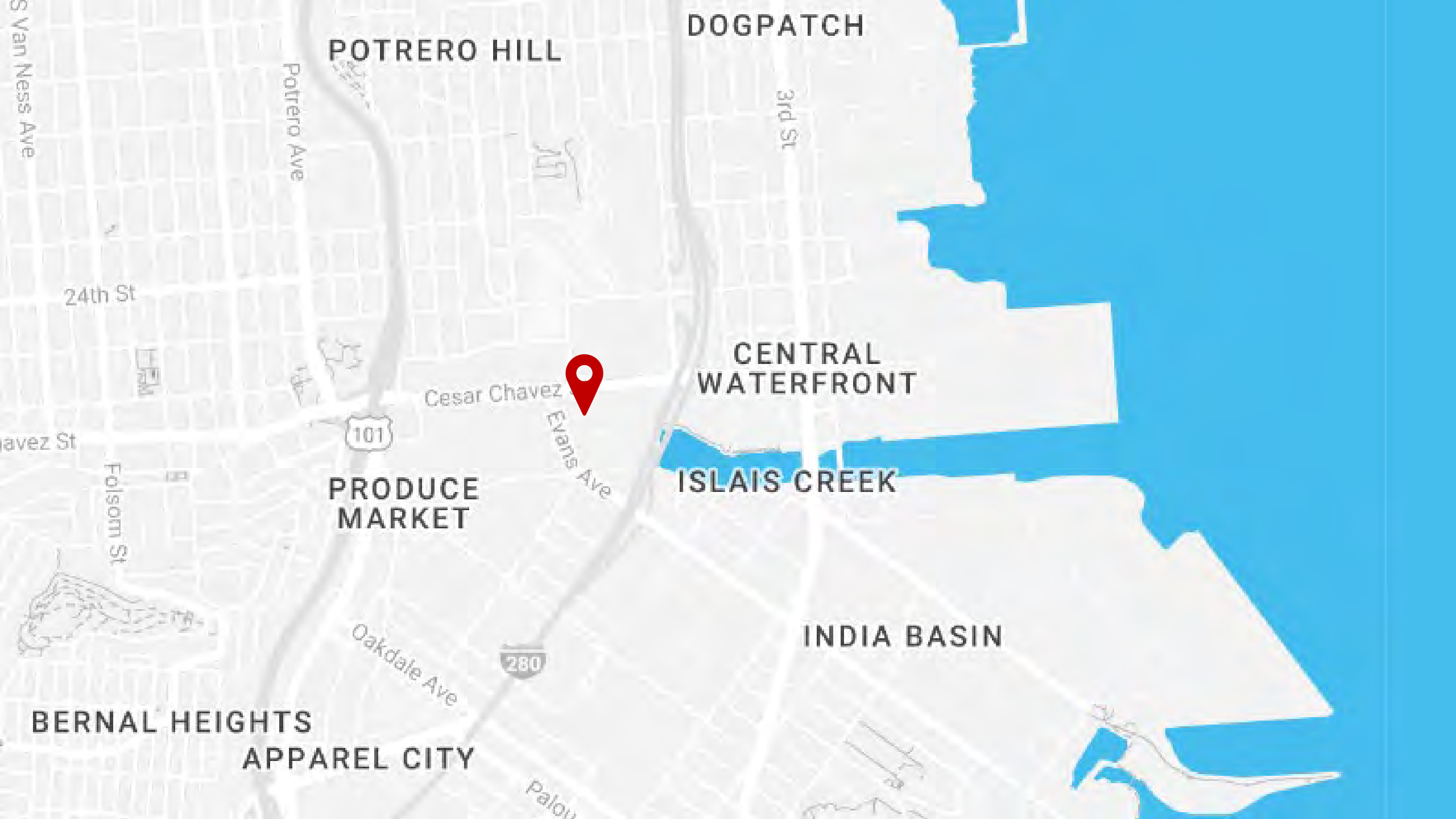


**BACKGROUND (CAPITAL IMPROVEMENT PROJECT OVERVIEW)**

San Francisco Public Works is currently designing a new location for the San Francisco Public Utilities Commission's (SFPUC) City Distribution Division (CDD) at 2000 Marin Street, along the Islais Creek watershed. CDD manages the City's water distribution, including maintenance of 1250 miles of water mains, 12 reservoirs and 9 pump stations. The project will replace CDD's existing location at 1990 Newcomb Avenue. The campus will include administrative offices, an auto-shop, warehouse, meter shop, and a six-story, 244,000 square foot parking garage with 570 vehicle capacity. Community green space will be built outside the administrative office by parking for thirty-five large vehicles. The administrative offices will include space for engineers, business, operations, and retail management.

**ART OPPORTUNITY**

In consultation with the SFPUC, the Arts Commission has identified the North and West façades of the parking garage as the optimal public art location. This is an opportunity for an artist to architecturally integrate an artwork into the two façades. The following are the approximate areas for an artwork: North façade at 43 feet high by 134 feet wide, and West façade at 43 feet high by 300 feet wide. The artwork will be highly visible along Cesar Chavez and Evans Avenue, and will constitute a monumental artwork for the surrounding Potrero Hill, Dogpatch and Islais Creek neighborhoods.



POTRERO HILL

DOGPATCH

CENTRAL WATERFRONT

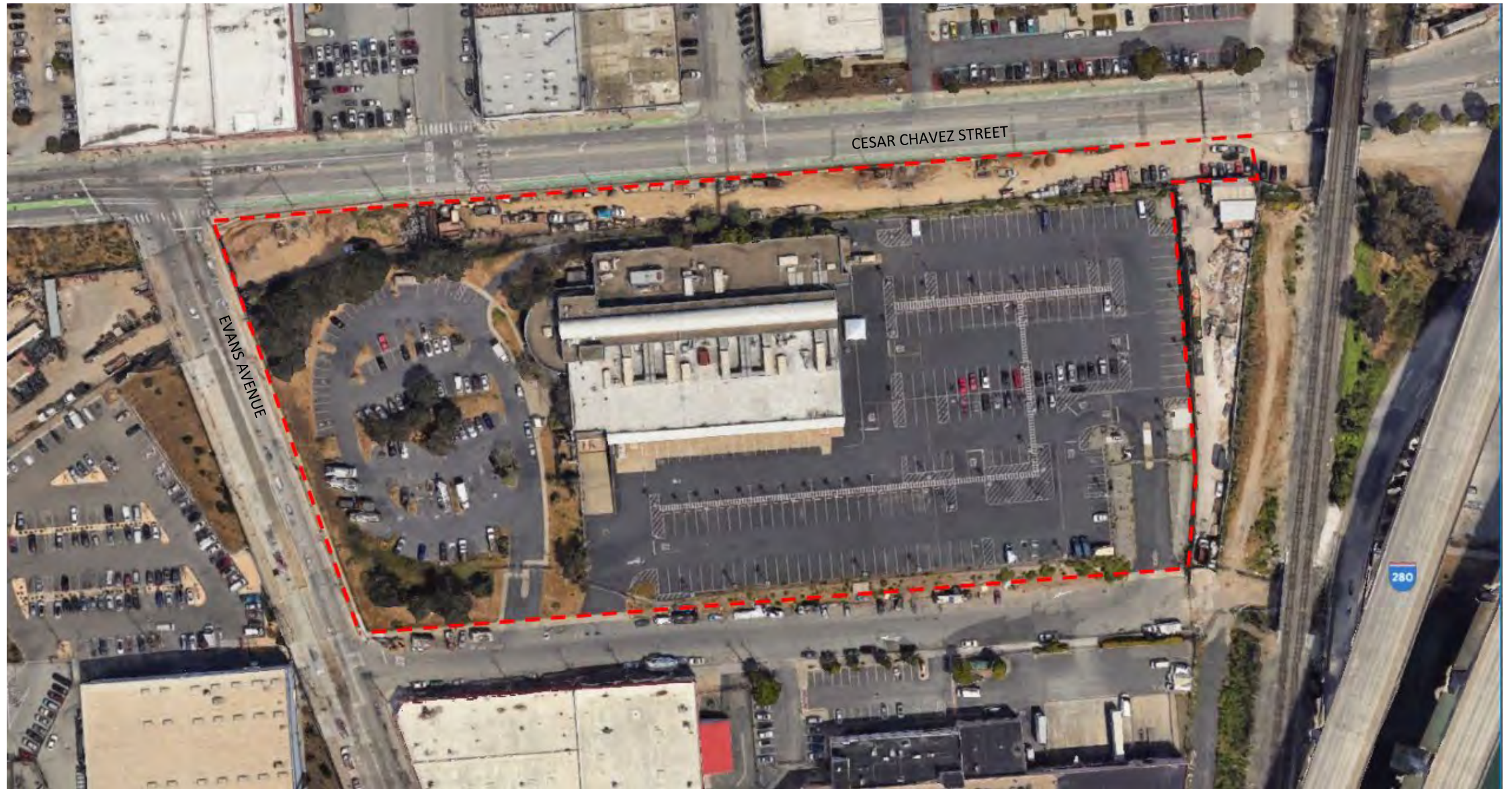
PRODUCE MARKET

ISLAIS CREEK

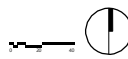
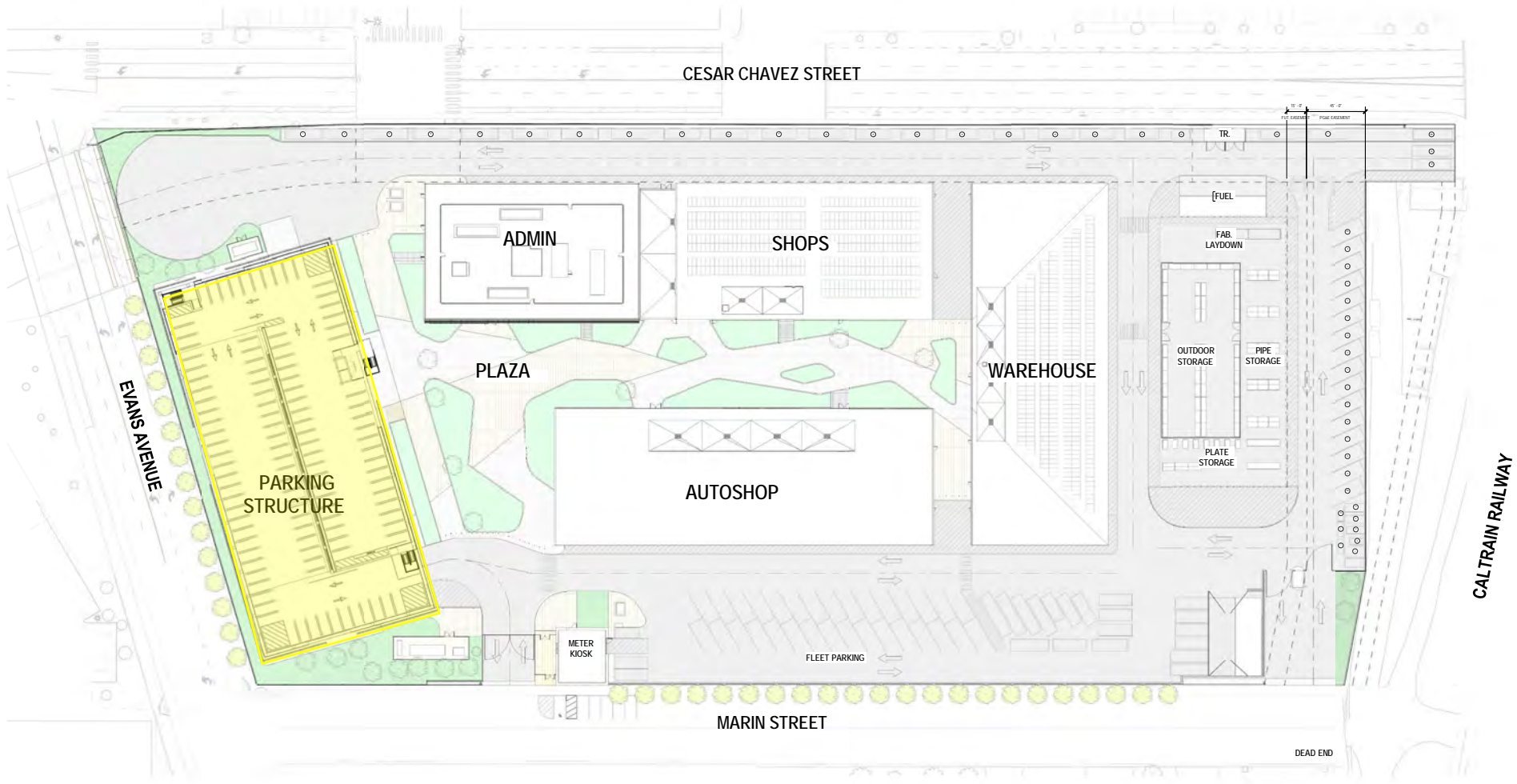
INDIA BASIN

BERNAL HEIGHTS  
APPAREL CITY









## San Francisco Water Department at 2000 Marin Public Art Project

- Artwork that is architecturally integrated into the North and West façades of the CDD Parking Garage.
- Will be highly visible along Cesar Chavez and Evans Avenue, and constitute a monumental, landmark artwork for the surrounding Potrero Hill, Dogpatch and Islais Creek neighborhoods.

### Project Goal

A site-specific, landmark artwork that is inspired by water, and reflects the activities of the SFPUC's City Distribution Division.

## Art Enrichment Budget

Art	\$ 2,394,000 (70%)
Administration	\$ 684,000 (20%)
Conservation	\$ 342,000 (10%)
<b>ART ENRICHMENT TOTAL</b>	<b>\$ 3,420,000</b>

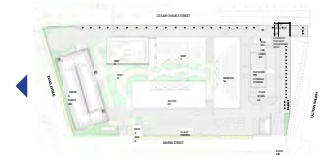
**Internal Contingency**                      **\$ 234,850**

Artist Selection	\$ 25,650
Field Expenses	\$ 5,000
Photography + Signage	\$ 7,000
Materials Assessment	\$ 1,500
<b>SUBTOTAL ART EXPENSES</b>	<b>\$ 39,150</b>

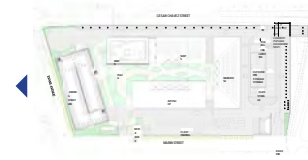
**Site Work/Preparation**                      **\$ 260,000**

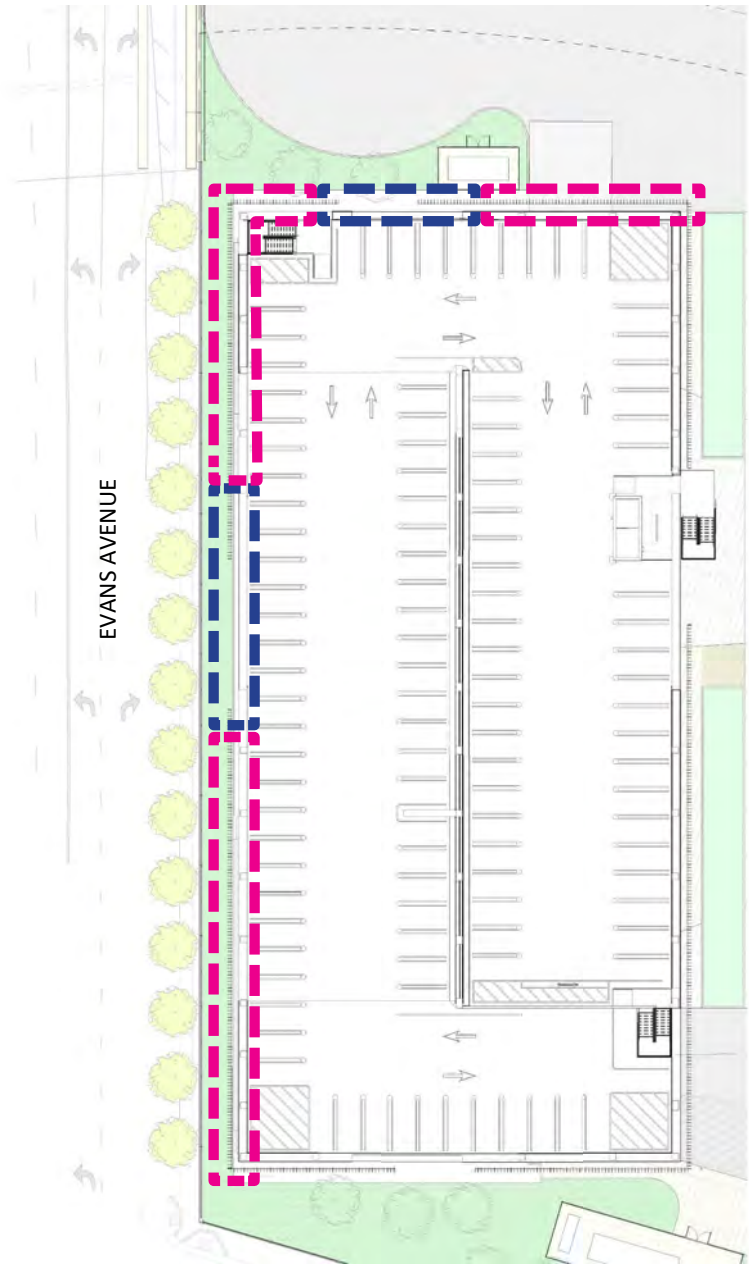
**TOTAL ARTWORK BUDGET**                      **\$ 1,860,000\***

*\* An architectural credit of \$150 per square foot will be applied to the artist in the areas where it replaces the existing/proposed metal fins on the building's façade.*







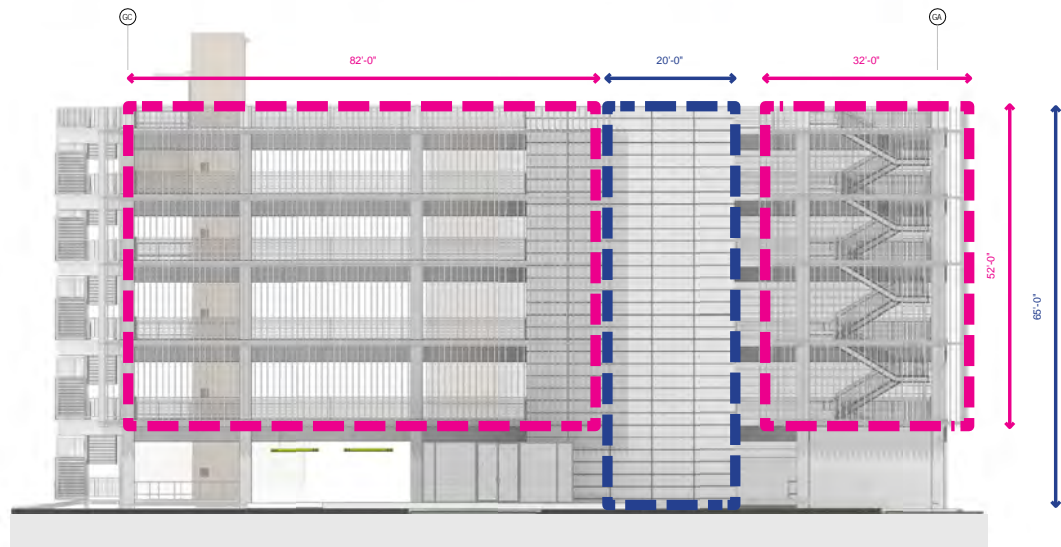


EVANS AVENUE

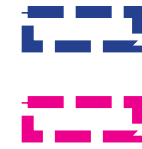




ELEVATION - WITHOUT FINS

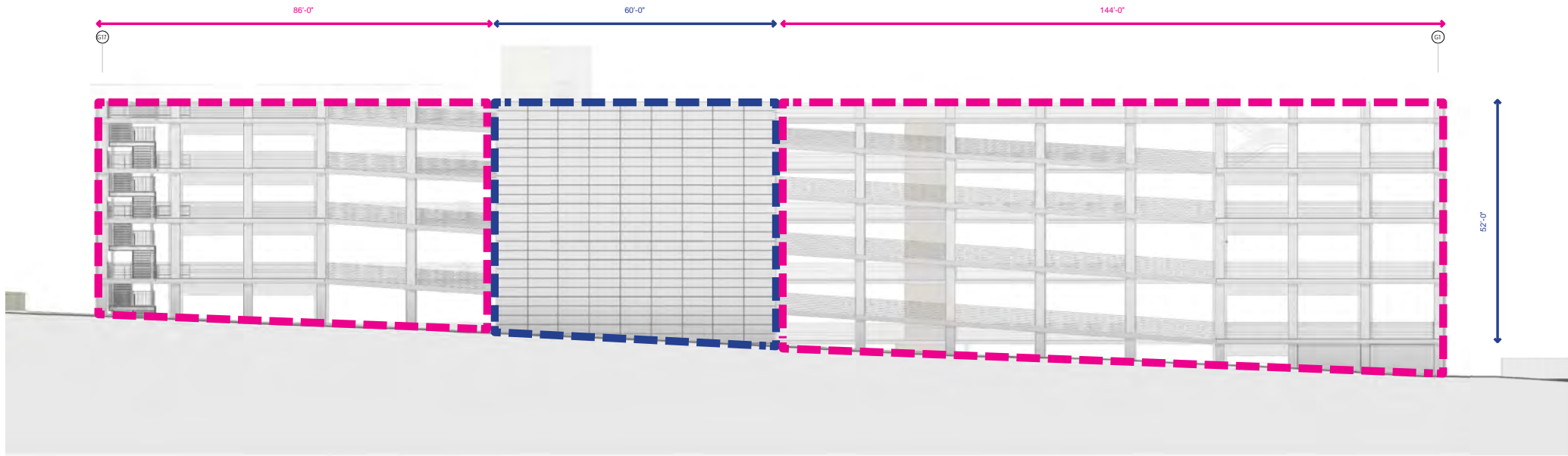


ELEVATION - WITH FINS



CONCRETE SHEAR WALL

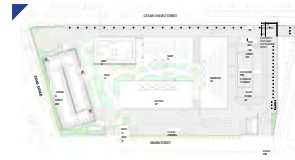
FIN SCREEN

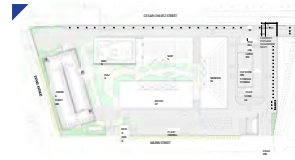


ELEVATION - WITHOUT FINS



ELEVATION - WITH FINS





## THOSE WHO CARRY WATER

An art proposal by Walter Kitundu for the San Francisco Water Department at 2000 Marin Street

"The water we drink, like the air we breathe, is not a part of our body, but is our body. What we do to one - to the body, to the water - we do to the other!"  
- Natalie Diaz

**Those Who Carry Water** is a site specific portrait of the water system, the people who sustain it, and the community through which the water flows. The images will be made of architectural float glass panels with brilliant enamel colors. Every image will be made from photographs of water taken at locations in the system managed or made possible by the SFPUC. From Hetch Hetchy to powerhouses, from public pools to treatment plants, Kitundu will photograph those who care for water systems, as well as the people of Bayview, whose silhouettes will appear in the glass.

The artist will be in conversation with Bayview residents and SFPUC employees to learn about their relationships with water and the water system. He will be joined in this story gathering work by long time collaborator and member of the Bayview community, choreographer **Joanna Rodriguez**. They will develop an aerial dance performance for the opening of the new building to spectacularly bring the water stories of Bayview residents to life.

The idea of carrying water is an expansive way to think about our relationship with it. We carry it everyday in our cells and bones. So do the fish, birds, elk, and mountain lions of California. The SFPUC has shaped the land to carry water in the form of reservoirs. That water is sent through pipes to generate power and sustain a population that wouldn't be possible without the systems that carry water. This artwork is a monument to the truth that we are water and water is us. We have a responsibility to care for what we carry, to honor the central role it plays in our lives, without taking our easy access to it for granted. This artwork honors, honors, and shines a light on the many ways we carry water.

Selected lines from the stories we receive will adorn the images inside the garage, creating an interior space, emerging from these from multiple communities.

A sample image merging water with people and other being.

The path of the Tuolumne River runs through the artwork. A thread that connects images from all aspects of the system.

The artwork will be installed with a simple and low profile painted support system.

## Hughes/Starkweather Confluent Systems

ART PROPOSAL FOR THE SAN FRANCISCO WATER DEPARTMENT AT 2000 MARIN STREET

Local artists Hughes/Starkweather propose to create a site-specific, timeless artwork for the San Francisco Water Department that reflects the interconnectedness between water and infrastructure.

The layered metal artwork **Confluent Systems** makes visible what is often invisible: essential systems that make life in the city possible. As water moves and seeps through landscapes above and below ground, and in and out of engineered systems, this artwork reflects the architecture that enables the delivery of water, including miles of pipes that must be maintained and repaired and the waterheds and aquifers that are the source of San Francisco's clean drinking water.

Shapes and lines in the artwork reference maps of the adjacent Bayview and Potrero Hill neighborhoods, local reservoirs like Bay Shoreline, Hydrospan Street, Slide Creek, water pipes, underground aquifers, the Hetch Hetchy system, and the Tuolumne watershed. **Confluent Systems** encourages appreciation for the complex, engineered, and natural systems that support the thriving urban environment of San Francisco and the stewardship of shared resources.

**LAYERED METAL PANELS AND SUPPORT STRUCTURE**

Water flows through pipes. The artwork's layered metal panels are supported by a simple and low profile painted support system.

**DETAIL OF LAYERED METAL PANELS**

**SOURCE MATERIALS**

Map of Marin Street  
Map of Bayview and Potrero Hill  
Map of Tuolumne Watershed  
Map of Hetch Hetchy System

## Favianna Rodriguez

Art Proposal for the San Francisco Water Department at 2000 Marin Street

### TIDES OF TRANSFORMATION:

Reshaping San Francisco's Water Legacy

This artwork is about reimagining our relationship to water. By rethinking and healing. Through symbols, color and texture, I will tell the story of three powerful forces that have shaped San Francisco's water system: First, I will depict the story of water itself and how it moves from the natural world to our taps. Second, I will depict the story of SFPUC's water workers who are fundamental to water operations, and who engaged for better working conditions. Third, I will depict the story of the Black leaders in the Bayview Hunters Point community who organized for change and justice around the water system.

**Artist Symbols and Colors**

**North Wall**

**West Wall**

**Proposed Materials**

Replicating the qualities of paper collage at an architectural scale through experimentation with layered metal patterning, color, texture, and depth. Materials to be explored and tested: 3mm communication wall tile, glass or fibrous, all sizes, stainless, copper, structural perforating, metal base and supports.

**Inclusive Community Engagement**

In order to create my artwork, I will seek interlinked and flexible on an on-going basis with local residents, community advocates, labor leaders, environmentalists, and social justice organizers.

**Community Benefit: A Fellowship for Reimagining our relationship to water** through a lens of Climate Justice. I will also launch a 3-4 month artist fellowship for four local Bayview - Hunters Point artists to convene, learn and create art about our relationship to water and how and why policies have shaped our experience with water bodies and energy systems.

In collaboration with S+D

## WATERLINES

ART PROPOSAL FOR THE SAN FRANCISCO WATER DEPARTMENT AT 2000 MARIN ST.

RENE D'AMICO AND JESSICA JOE

Our shared experience is shaped by the larger world and the water that flows through it. We are connected to the water in many ways, from the tap to the ocean, from the rain to the snow, from the clouds to the ground. This artwork is a celebration of the water that sustains us, and the people who work to bring it to our taps.

Waterlines is a site-specific artwork for the San Francisco Water Department at 2000 Marin Street. The artwork is a celebration of the water that sustains us, and the people who work to bring it to our taps. It is a monument to the water that flows through our city, and the people who work to bring it to our taps.

**Waterlines** is a site-specific artwork for the San Francisco Water Department at 2000 Marin Street. The artwork is a celebration of the water that sustains us, and the people who work to bring it to our taps. It is a monument to the water that flows through our city, and the people who work to bring it to our taps.

**Waterlines** is a site-specific artwork for the San Francisco Water Department at 2000 Marin Street. The artwork is a celebration of the water that sustains us, and the people who work to bring it to our taps. It is a monument to the water that flows through our city, and the people who work to bring it to our taps.

**Waterlines** is a site-specific artwork for the San Francisco Water Department at 2000 Marin Street. The artwork is a celebration of the water that sustains us, and the people who work to bring it to our taps. It is a monument to the water that flows through our city, and the people who work to bring it to our taps.

## PANEL TWO PROCESS

1. Presentation of proposals by each finalist followed by questions from panelists.
2. Summary of public comment received during proposal display.
3. Staff report on artist reference checks.
4. Panel discussion of each proposal, followed by scoring based on criteria.
5. Staff tallies votes and announces results.
6. Panel recommendation presented to Visual Arts Committee and Full Commission for approval.

## SCORING CRITERIA

### 1. Artistic Merit (1 – 10)

- a. Originality of concept and vision
- b. Degree to which work engages the viewer emotionally, intellectually, spiritually
- c. Quality of craftsmanship or mastery of skills and techniques

### 2. Relevant Skills and Experience (1 – 10)

- a. Assessed ability of artist to successfully implement a proposed project, such as the ability to work constructively with other project stakeholders, meet deadlines, willingness to resolve issues as they arise, and generally manage the demands of the project.
- b. Cultural competency and/or significant connection between the artist and the project constituency, or experience that may particularly qualify an artist to meet project goals may also be considered.

### 3. Meets Goals of the Project and the Civic Art Collection. (1 – 10)

### 4. Appropriate to Site (1 – 10)

- a. Proposed artwork is appropriate for its intended display location in terms of scale, media, design or imagery and is judged to be relevant within the context of the surrounding community, and is compatible with the mission and operations of the client department

### 5. Feasibility and Maintainability (1 – 10)

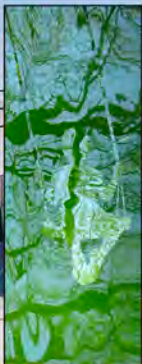
- a. Artwork evaluated relative to its feasibility and evidence of the artist's ability to successfully complete the work as proposed. Factors to be considered include, but are not limited to: project budget, timeline, and the artist's experience.
- b. Due consideration shall be given to the structural and surface soundness, and to inherent resistance to theft, vandalism and weathering, and to the cost and amount of ongoing maintenance and/or repair anticipated.



# THOSE WHO CARRY WATER

An art proposal by Walter Kitundu  
for the San Francisco Water Department  
at 2000 Marin Street

"The water we drink, like the air we breathe,  
is not a part of our body, but is our body.  
What we do to one - to the body,  
to the water - we do to the other."  
~ Natalie Diaz



**Those Who Carry Water** is a site specific portrait of the water system, the people who sustain it, and the community through which the water flows. The images will be made of architectural float glass panels with brilliant enamel colors. Every image will be made from photographs of water taken at locations in the system managed or made possible by the SFPUC. From Hetch Hetchy to powerhouses, from public pools to treatment plants, Kitundu will photograph those who care for water systems, as well as the people of Bayview, whose silhouettes will appear in the glass.

The artist will be in conversation with Bayview residents and SFPUC employees to learn about their relationships with water and the water system. He will be joined in this story gathering work by long-time collaborator and member of the Bayview community, choreographer **Joanna Haigood**. They will develop an aerial dance performance for the opening of the new building to spectacularly bring the water stories of Bayview residents to life.

The idea of carrying water is an expansive way to think about our relationships with it. We carry it everyday in our cells and bones. So do the fish, birds, elk, and mountain lions of California. The SFPUC has shaped the land to carry water in the form of reservoirs. That water is sent through pipes to generate power and sustain a population that wouldn't be possible without the systems that carry water. This artwork is a monument to the truth that we are water and water is us. We have a responsibility to care for what we carry, to honor the central role it plays in our lives, without taking our easy access to it for granted. This artwork explores, honors, and shines a light on the many ways we carry water.

Selected lines from the stories we receive will adorn the images inside the garage, creating an interior poem weaving together ideas from multiple communities.

< sample images merging water with people and other beings



NORTH ELEVATION



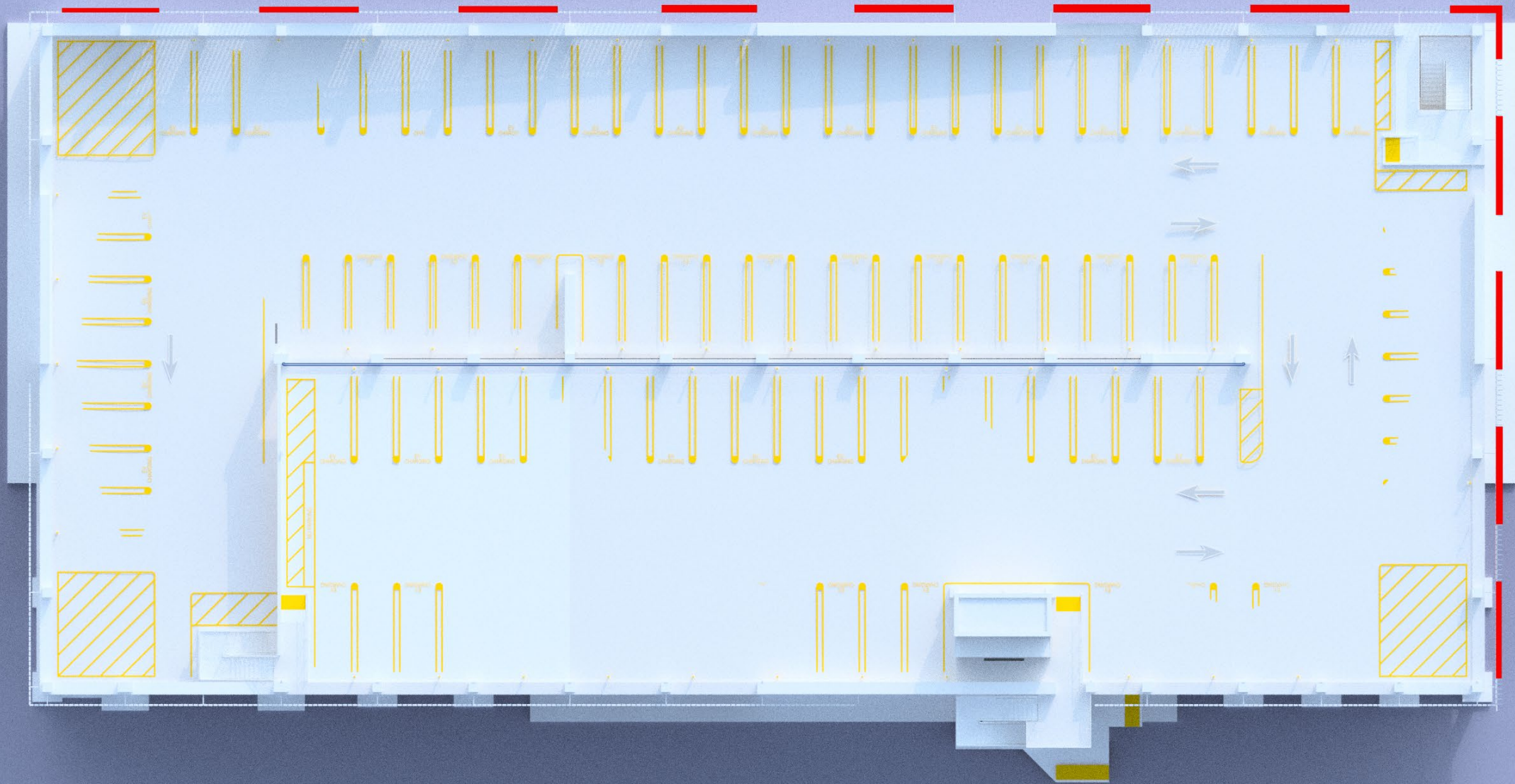
WEST ELEVATION



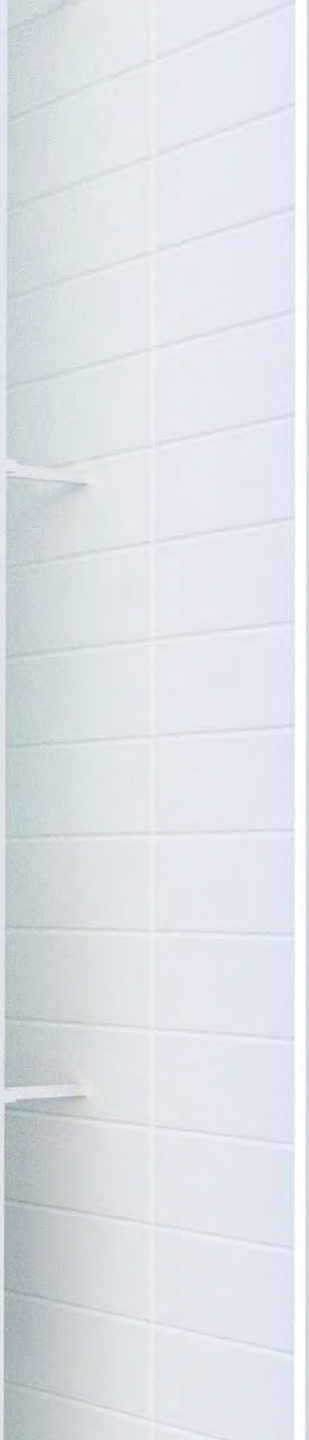
The path of the Tuolumne River runs through the artwork. A thread that connects images from all aspects of the system



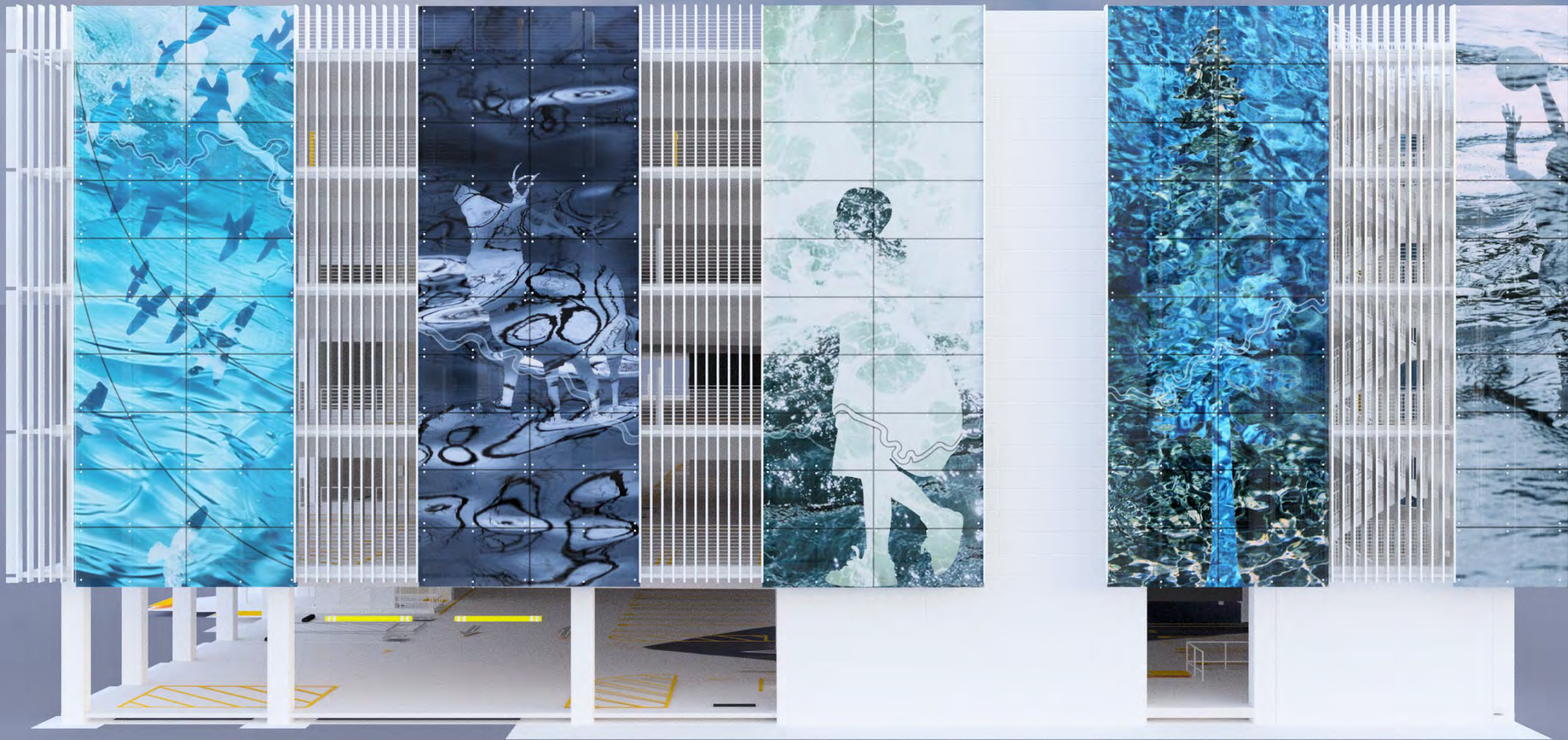
The artwork will be mounted with a secure and low profile pointed supported system.



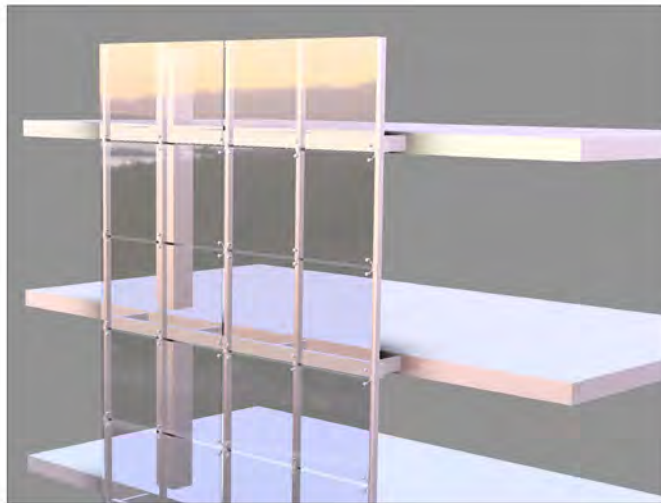
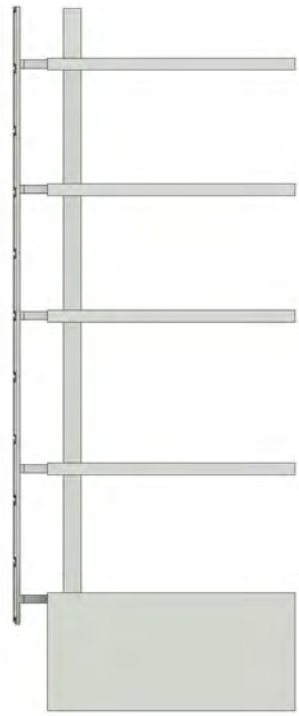








Kitundu Studio  
Pointed Support System for Art Glass  
Those Who Carry Water - SF WATER 2000 MARIN





The water we drink,  
like the air we breathe,  
is not a part of our  
body, but is our body.



*The water we drink,  
like the air we breathe,  
is not a part of our  
body, but is our body.*





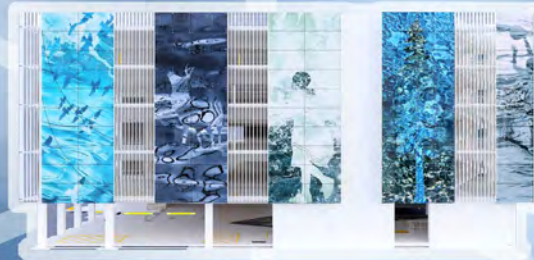
**Southeast Community Center**



**Zaccho Dance Theatre**



**Bayview Public Library**



**2000 Marin St**



**SFPUC Employees and Bayview Residents**



**Lands and Waters**

