



# **CALIFORNIA CONSERVATION CORPS**



**TO PROTECT AND ENHANCE CALIFORNIA'S  
NATURAL RESOURCES AND COMMUNITIES WHILE  
EMPOWERING AND DEVELOPING YOUNG ADULTS  
THROUGH HARD WORK AND EDUCATION.**



**WHO WE ARE**



## WHO ARE THE CORPSMEMBERS

---

# WE ARE 1,587 STRONG!

CCC enrolls  
young adults  
18-25 years old,  
and military  
veterans through  
age 29.

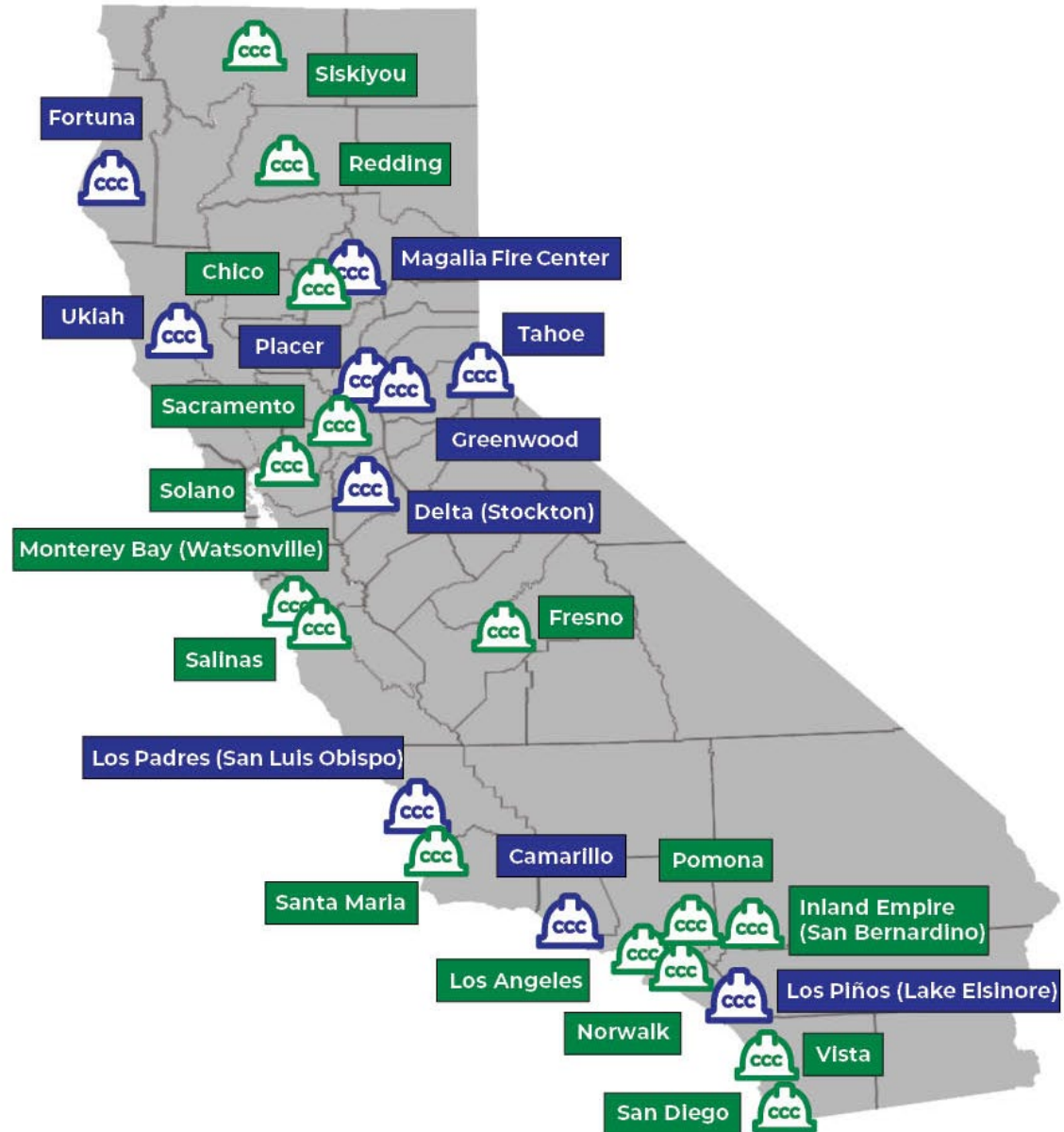


## WHERE WE WORK

**Corps-  
members  
based at  
25 centers**

**15 non-  
residential**

**10 residential**



## WHERE WE COME FROM

### REGIONAL DIVERSITY

50 of 58 Counties

20% from Los Angeles County

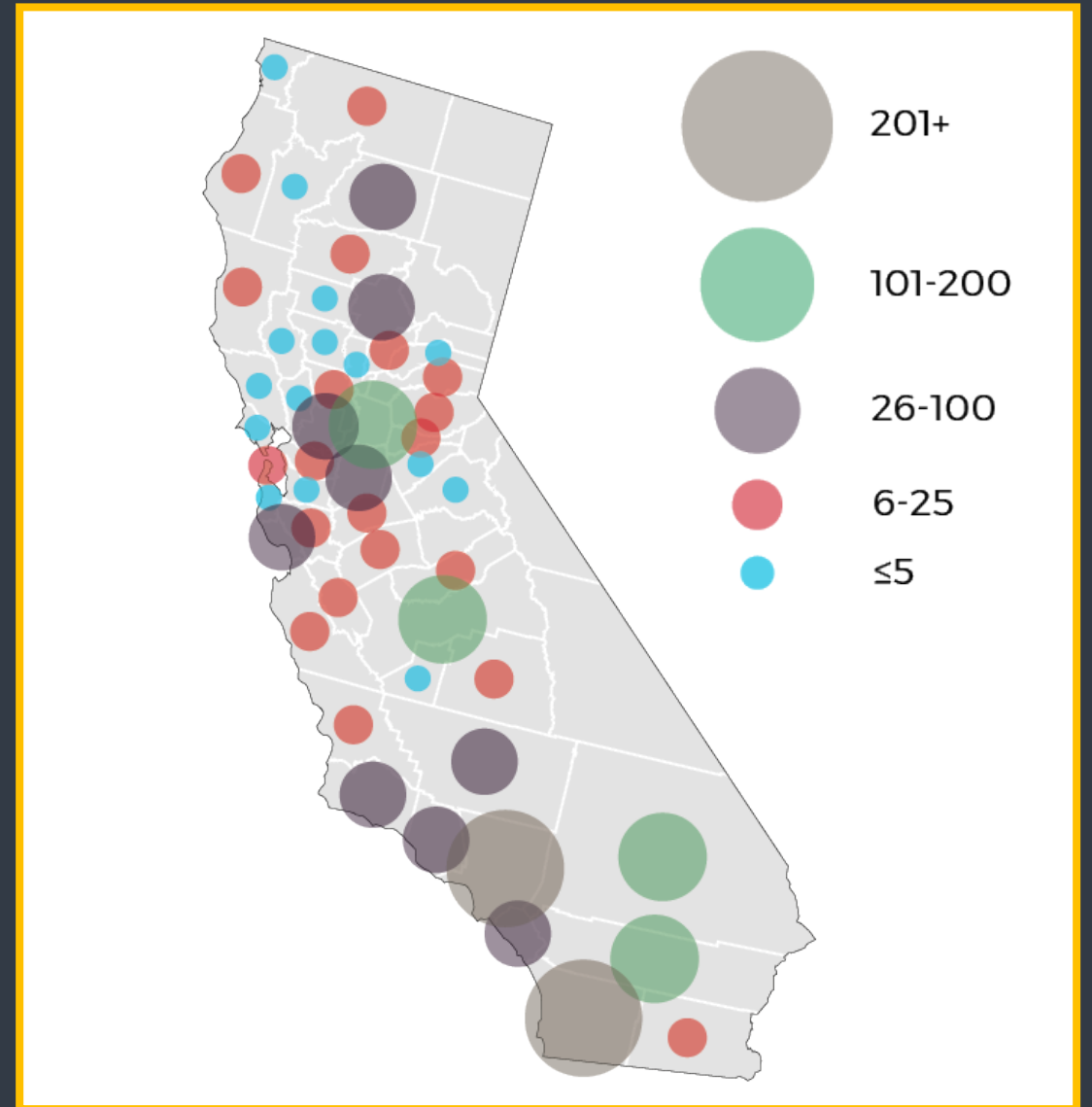
10% from San Diego County

9% from San Bernardino County

7% from Riverside County

5% from Sacramento County

5% from Fresno County



FY 22-23 New Enrollments

## WHO WE ARE

---

# GENDER DIVERSITY

81% Male

19% Female



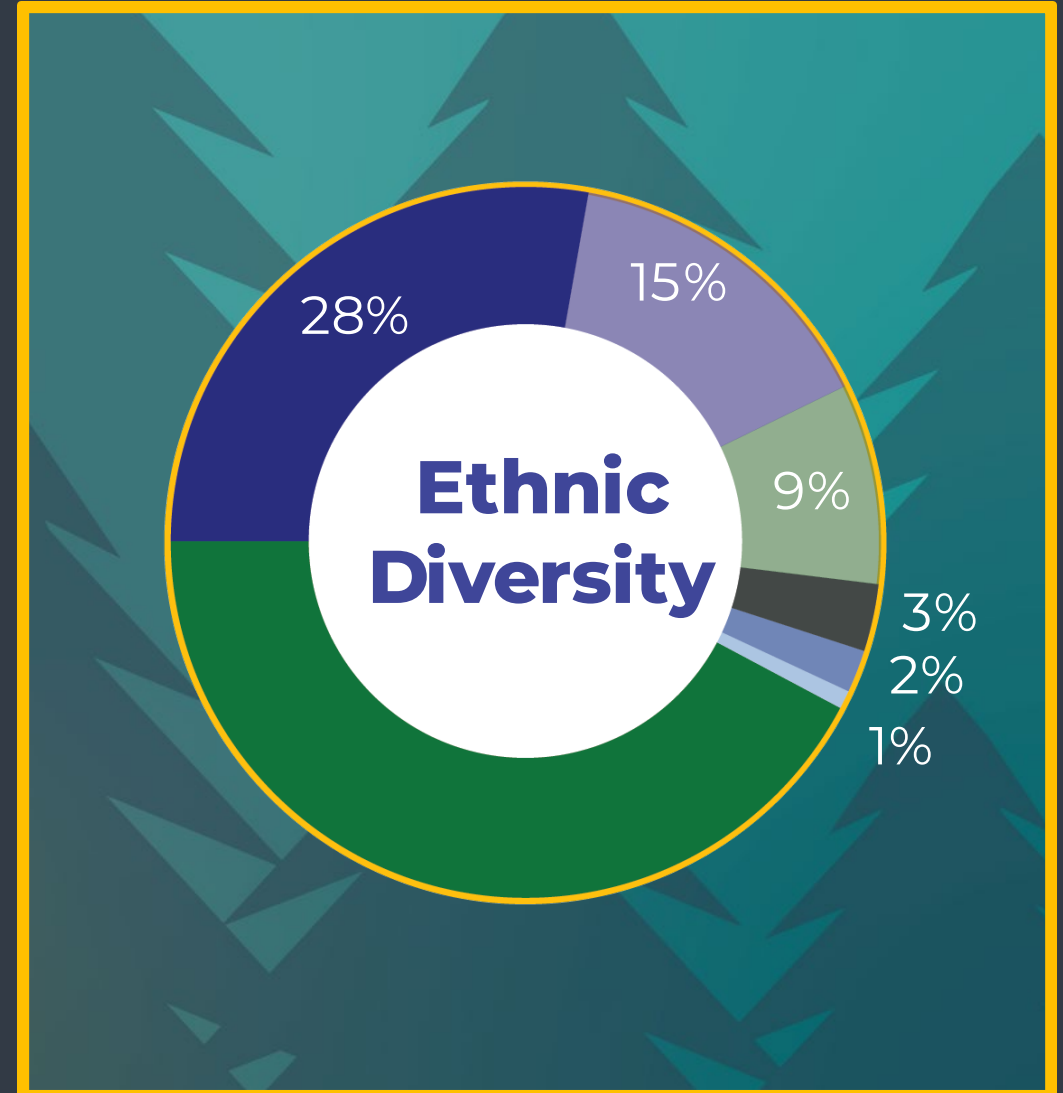
FY 22-23 New Enrollments

## WHO WE ARE

---

### ETHNIC DIVERSITY

- 28%** Hispanic
- 15%** Caucasian
- 9%** African American
- 3%** Asian American & Pacific Islander
- 2%** Other
- 1%** Native American
  
- 42%** Chose Not To Identify



FY 22-23 New Enrollments



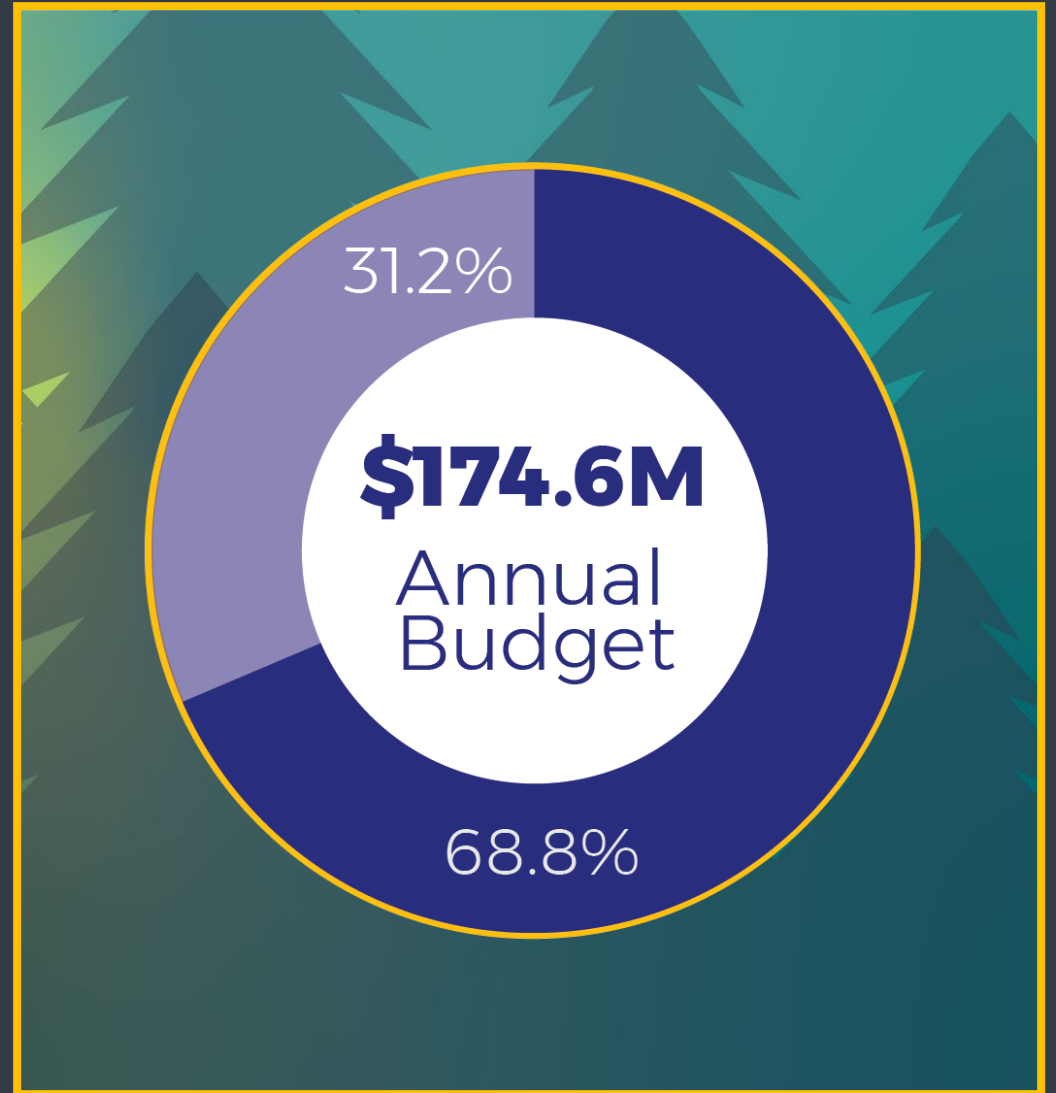
## OUR BUDGET

---

# \$174.6M ANNUAL BUDGET

68.8% State General Budget

31.2% Government, nonprofit, private sector contracts



## WHO WE ARE

---

# EDUCATIONAL DIVERSITY

- 15%** Adults Seeking Diploma
- 57%** Earned High School Diploma or High School Equivalency
- 28%** Attended Some College or Have Degree



FY 22-23 New Enrollments

## CORPSMEMBER BENEFITS

---

- \$2,814 monthly stipend
- Health insurance
- \$500 per month for housing and meals at residential centers
- Personal and career development courses
- Career transition navigator works one-on-one with Corpsmembers to plan future
- Opportunity to finish high school diploma
- Earn \$8,000+ in scholarships in first year
- Industry recognized certifications
- Hands-on experience





**REJUVENATION  
CONCEPT**



## GOALS

---

- Deliver Bay Area young adults training & education leading to career pathways
- Prioritize youth facing housing insecurity, domestic violence, foster youth, & other vulnerabilities
- Provide opportunities for justice-impacted youth eligible for the CCC program
- Develop strong community network through partnerships with educational institutions, nonprofits, conservancies & land trusts, private industry



## PROJECTS AND CREWS

---

### FOUR CREWS

- Fire (Two crews)
- Forestry
- Energy

### FORESTRY

- Remove hazardous trees and overgrown brush that create potential fire risk, and support reforestation

### WILDLAND FIREFIGHTING

- CCC-CAL FIRE hand-crews partnered with CAL FIRE for training & deployment as initial attack & mop-up work



## PROJECTS AND CREWS

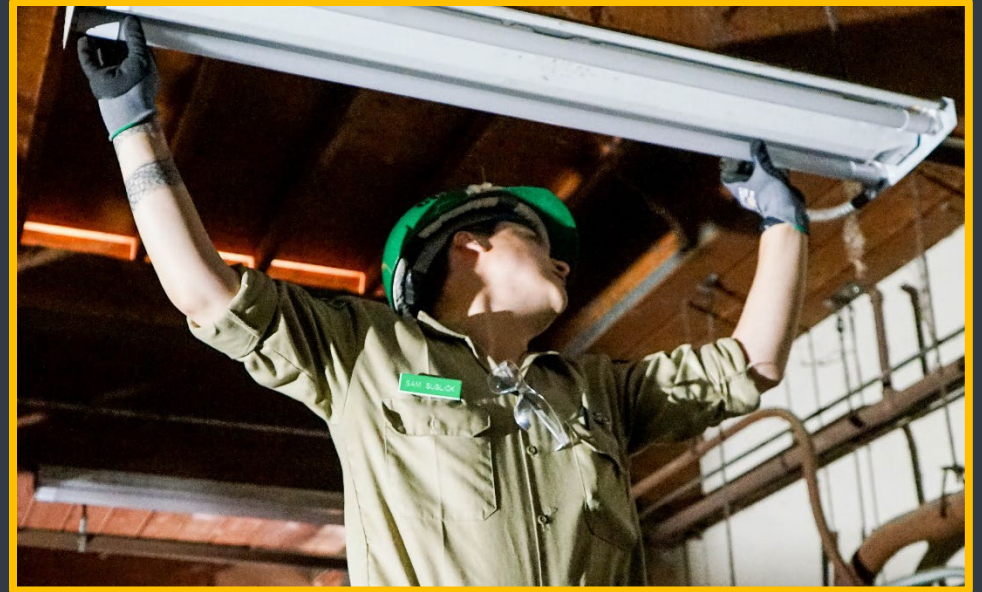
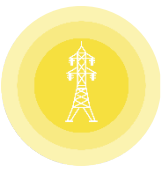
---

### ENERGY

- Conduct energy audits, retrofit
- Solar & EV installation
- OSHA, scissor lift, and other industry recognized certifications

### EMERGENCY RESPONSE

- Respond to man-made and natural disasters  
Partners – Cal OES, CAL FIRE, Food & Ag, FEMA, AmeriCorps



## FACILITIES

---

- Willing to spend \$500,000 - \$1M on feasibility study
  - More testing needed for lead paint, asbestos, & PCBs
  - In-depth evaluation of water & wastewater system needs
- Renovations for health & safety as well as comfort & privacy
- Consider pilots or phased approaches





## CONTRACTING/ACQUISITION & FUNDING

---

- CCC funding available for four crews, staff, and center operations for 10 years
- CCC is committed to work with the San Francisco Probation Commission on development, implementation, & sustaining a plan and protocols
- CCC historical example – CCC Los Piños Center
  - 30-year Special Use Permit with USFS
  - Initial funding from multiple state funds
  - Tent camp operations



# EDUCATION, TRAINING, & SERVICES

---

## WRAPAROUND SERVICES

- Trauma-informed care

## COLLABORATION WITH EDUCATIONAL INSTITUTIONS

- Corpsmembers can earn their high school diploma while enrolled
- Community College partnerships are high priority

## TRAINING & CERTIFICATIONS

- Cal Naturalist, S212 &/or CCC Chainsaw, CAL FIRE Basic Firefighter, Wilderness First Aid or First Responder, Commercial Driver License, HAZWOPER, ICS 100 & 700



# CCC NAVIGATOR PROGRAM

---

## GOAL

- See Corpsmembers reach their personal and professional development goals

## PROCESS

- Improve resumes
- Secure interviews
- Launch careers relevant to skills gained in the CCC
- Prepare Corpsmember for a smooth exit



# Path to Success



# CAREER PATHWAYS

Department of Forestry and Fire Protection (CAL FIRE)	Fire Fighter I	\$3672 - \$4643 / mo
Department of Forestry and Fire Protection (CAL FIRE)	Fire Fighter II (Paramedic)	\$4,255 - \$5,515 / mo
Department of Forestry and Fire Protection (CAL FIRE)	Defensible Space Inspector	\$3,367 - \$4163 / mo
Department of Parks & Recreation	Forestry Aide	\$19.43 - \$24.02 / hr
Department of Parks & Recreation	Park Maintenance Worker I	\$3,868 - \$4,850 / mo
California Conservation Corps	Conservationist 1	\$3,308.00 - \$5,255 / mo
Department of Water Resources	Fish and Wildlife Scientific Aid	\$17.21 - \$18.79 / hr
Department of Transportation (Caltrans)	Caltrans Highway Maintenance Worker	\$3983 - \$4541 / mo
Department of Transportation (Caltrans)	Caltrans Highway Maintenance Worker	\$3983 - 4541 / mo
Department of Transportation (Caltrans)	Caltrans Equipment Operator I	\$4,438 - \$5,331 / mo



# PARTNERS

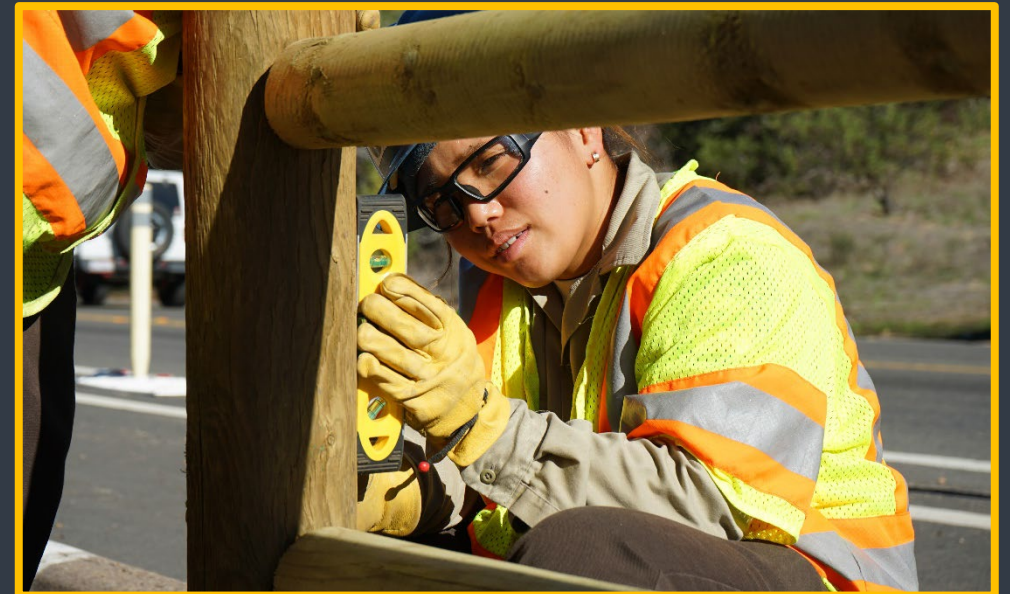
- **FEDERAL**
- **STATE**
- **COUNTY**
- **CITY**
- **RESOURCE DISTRICTS**
- **FIRE SAFE COUNCILS**



## COMMUNITY BENEFITS

### **\$4-5 Million in natural resources & emergency response benefits to the region**

- Collaboration with local government, boards, & commissions
- Local youth engagement
- Prepare future workers
- Improve our environment & local communities



**THANK YOU**



**ccc.ca.gov**

**800-952-5627**

**FOLLOW US**



**@californiaconservationcorps**