



2024 ANNUAL REPORT

LOCAL HIRING POLICY FOR CONSTRUCTION



CONTENTS

03

LETTER FROM THE MAYOR

04

ABOUT OEWD

05

EXECUTIVE SUMMARY

06

LOCAL HIRING OVERVIEW

08

WORKER DEMOGRAPHICS

12

LOCAL HIRING BY DEPARTMENT

79

CITYBUILD ACADEMY

80

ACKNOWLEDGMENTS

LETTER FROM THE MAYOR



On behalf of the City of San Francisco, I am pleased to present the 2024 Annual Report on the Local Hiring Policy for Construction. Over the last few years, the construction industry in San Francisco has been rising up to the challenge of revitalizing our urban centers for both residents and visitors. Slowly, but surely, our City has been returning to pre-pandemic levels of new development, which means more jobs for our residents.

2023 marked a vital year for our continued economic recovery. We saw the completion of Phase 1 of the Mission Rock Development, where major commercial tenants have signed leases. We saw a significant uptick in construction at the Potrero Power Station and at Treasure Island, which will dramatically increase the number of residential units available to San Franciscans. And an unprecedented number of projects awarded by the Mayor's Office of Housing and Community Development, covered by the Local Hiring Policy, came online to create even more affordable housing in the City. These projects alone, representing 34% of all work hours on projects covered by the City's Policy, will provide essential housing and employment opportunities that will shape San Francisco's future – one that is safe, vibrant and flourishing.

Economic recovery and workforce development go hand in hand. We must ensure that San Franciscans remain living in San Francisco. We must provide the resources that allow them to thrive. It starts with creating more housing, which means creating more jobs in construction. With programs like CityBuild Academy, residents have access to training resources that will grow both their careers and the pipeline of local workers in the field of construction. This is what San Francisco needs to soar again.

I am continually grateful for the support of our industry partners, who help make the Local Hiring Policy a success. Thank you to contractors, building trade unions, community-based organizations, and City departments for their ongoing collaboration in providing local residents with incredible employment opportunities in the field of construction. We are bringing San Francisco back!

Sincerely,

A handwritten signature in blue ink that reads 'London Breed'. The signature is fluid and cursive, written in a professional style.

London Breed
Mayor, City and County of San Francisco

ABOUT OEWD

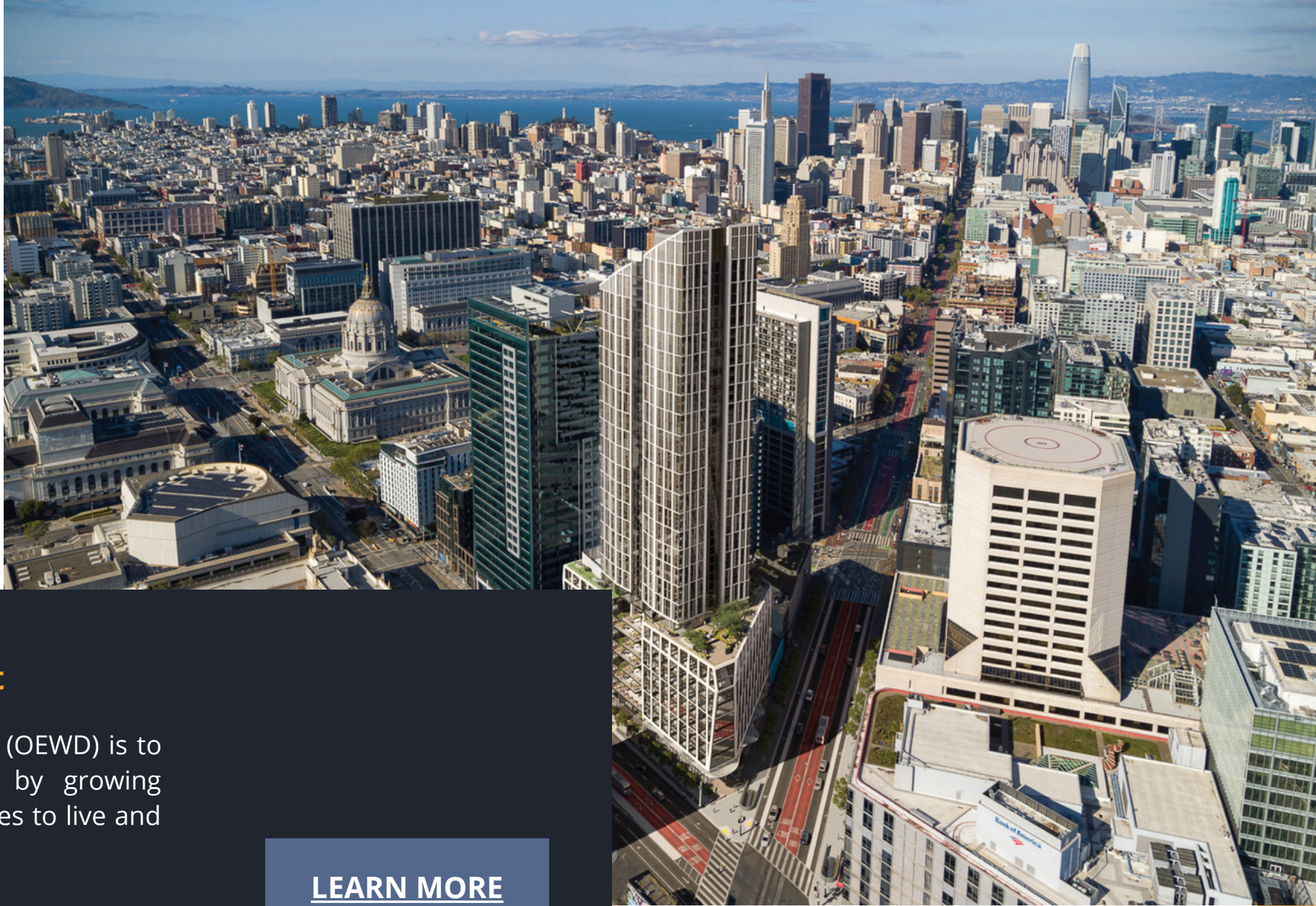
The Office of Economic and Workforce Development

The mission of the Office of Economic and Workforce Development (OEWD) is to advance equitable and shared prosperity for San Franciscans by growing sustainable jobs, supporting business of all sizes, creating great places to live and work, and helping everyone achieve economic self-sufficiency.

Chapter 82 of the San Francisco Administrative Code, the Local Hiring Policy for Construction is recognized as one of the strongest pieces of legislation in the country to promote the utilization of resident-hiring on locally sponsored projects.

OEWD is charged with the administration of the Local Hiring Policy and is responsible for producing this Annual Report.

[LEARN MORE](#)



EXECUTIVE SUMMARY

The 2024 Annual Report for the San Francisco Local Hiring Policy for Construction was produced to inform the Board of Supervisors of local hiring participation achieved between January 1, 2023 and December 31, 2023. The report highlights trade, project and contractor performance data, identifies workforce demographics and addresses priorities for the coming year.

The 244 projects included in this report were awarded and managed by eight departments within the City and County of San Francisco: Mayor's Office of Housing and Community Development (MOHCD), Municipal Transportation Agency (MTA), Port of San Francisco (Port), Public Utilities Commission (PUC), Public Works (SFPW), Recreation and Parks Department (RPD), and San Francisco International Airport (SFO). and Department of Real Estate. Also included in this report is data for privately-funded developments on City-owned property subject to the Local Hiring Policy, including projects awarded by the Department of Real Estate.

OEWD's goal is to ensure that the Local Hiring Policy for Construction remains beneficial to local workers and the San Francisco economy. During 2023, 56 projects covered by the Policy were completed and closed. Contracts achieved compliance by reporting sufficient local work hours or through the creation of jobs for local residents. Continued analysis of the Policy's impact, and assessment of the availability of qualified workers, will be conducted as additional is reported. OEWD also continues to build on existing industry partnerships and local community organizations to respond to the evolving workforce needs of the construction industry.

REPORT HIGHLIGHTS

- 4,187,508 work hours on capital improvement projects and housing developments subject to the Local Hiring Policy were reported between January 1, 2023 and December 31, 2023.
- 33% of all construction hours were performed by local residents in 2023.
- 49% of all apprentice work hours reported in 2023 were performed by local residents.
- Covered projects awarded by the PUC accounted for 37% of all work hours reported in 2023, while MOHCD and private housing developments accounted for 33%, and SFO reported 16%.
- San Francisco Public works reported the highest local hire percentages on projects covered by the Policy, with 47% of the total hours and 74% of apprentice hours being performed by local residents, followed by PUC with 41% total local hours and 60% local apprentice hours.





33%

TOTAL LOCAL HOURS

33%, or 1.35 million, of the work hours reported on covered projects were performed by local residents

49%

LOCAL APPRENTICE HOURS

49%, or 285,000, of the apprentice work hours reported on covered projects were performed by local residents

4.19 M

TOTAL WORK HOURS

4,187,508 total work hours were reported on covered projects, of which 580,145 were performed by apprentices



LOCAL HIRING OVERVIEW

DEPARTMENT	TOTAL HOURS	LOCAL %	LOCAL APPRENTICE %
MAYOR'S OFFICE OF HOUSING	600,831	24%	43%
MUNICIPAL TRANSPORTATION AGENCY	20,185	30%	45%
PORT OF SAN FRANCISCO	9,644	19%	16%
PUBLIC UTILITIES COMMISSION	1,512,219	41%	60%
PUBLIC WORKS	542,171	47%	74%
RECREATION AND PARKS	50,432	46%	43%
SAN FRANCISCO INTERNATIONAL AIRPORT	643,817	28%	42%
PRIVATE DEVELOPMENTS	808,209	19%	34%

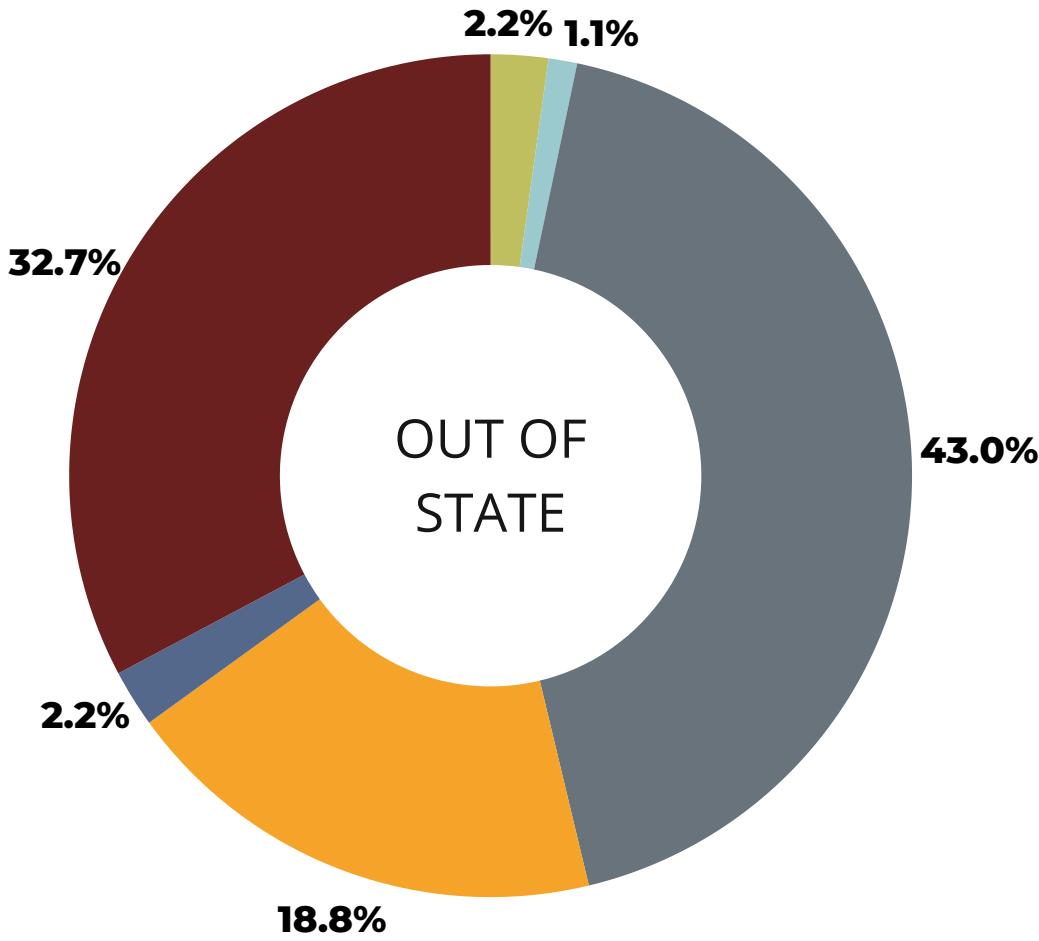
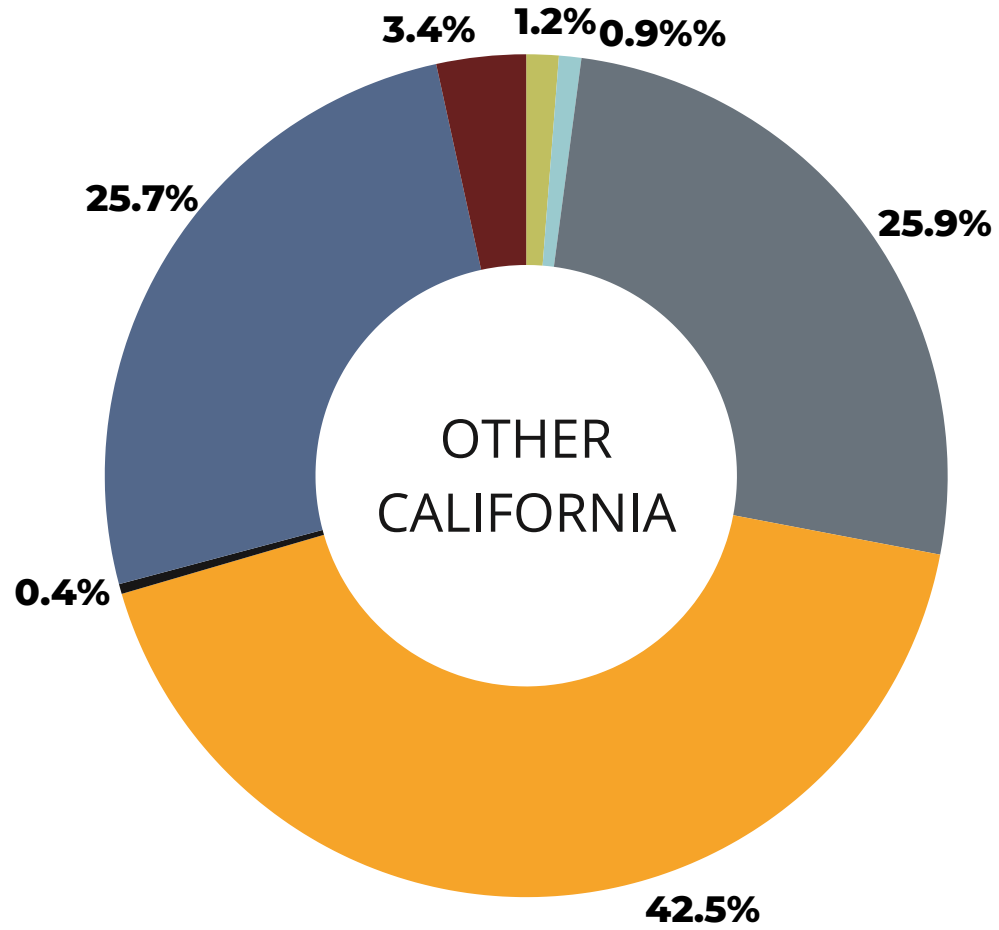
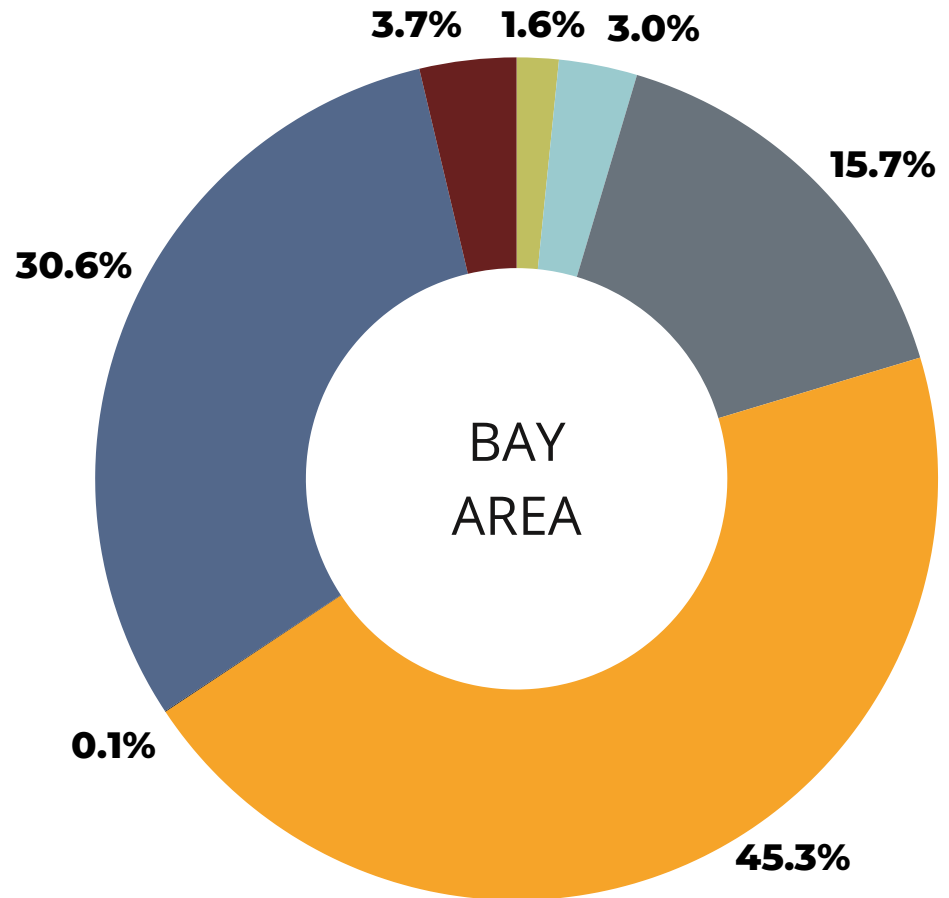
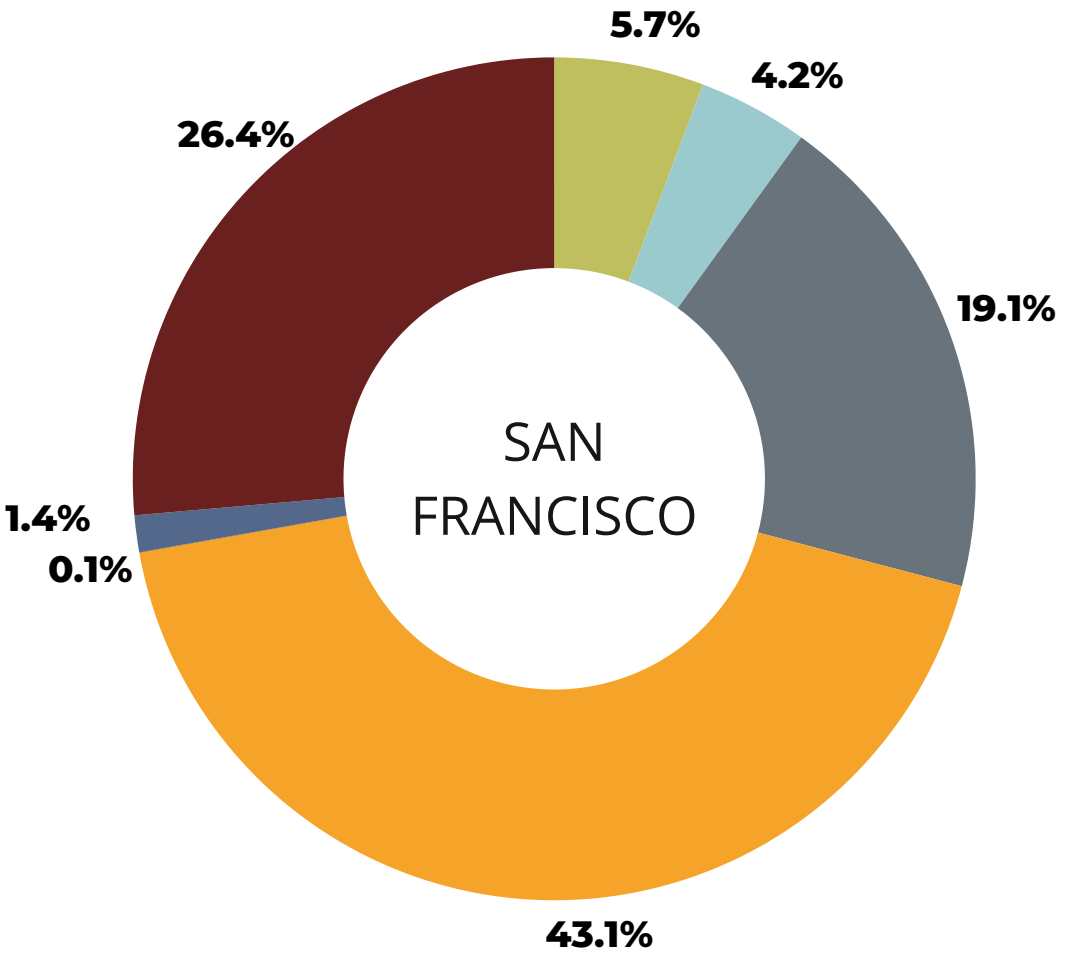
WORKER DEMOGRAPHICS ON LOCAL HIRING PROJECTS

BY DEPARTMENT

DEPT	Worker Count	African American	Asian or Pacific Islander	Caucasian	Hispanic	Native American or Alaskan	Other	Female
MOHCD	4,021	2.2%	3.1%	35.5%	55.9%	0.2%	3.0%	1.7%
MTA	249	2.8%	6.4%	38.2%	49.8%	0.0%	2.8%	1.2%
PORT	218	4.6%	3.2%	42.2%	46.3%	0.9%	2.8%	1.4%
PUC	4,833	4.5%	3.1%	47.9%	41.1%	0.5%	3.0%	2.3%
PW	2,489	4.1%	4.4%	41.0%	46.2%	0.3%	4.1%	3.4%
RPD	409	2.4%	1.0%	56.7%	33.7%	0.2%	5.9%	2.7%
SFO	2,217	2.5%	4.7%	47.6%	43.2%	0.2%	1.9%	1.4%
DA	3,588	2.9%	5.0%	44.9%	43.8%	0.2%	3.3%	1.7%

DEMOGRAPHICS BY REGION

- AFRICAN AMERICAN
- ASIAN/PACIFIC ISLANDER
- CAUCASIAN
- HISPANIC
- NATIVE AMERICAN/ALASKAN
- OTHER
- NOT SPECIFIED

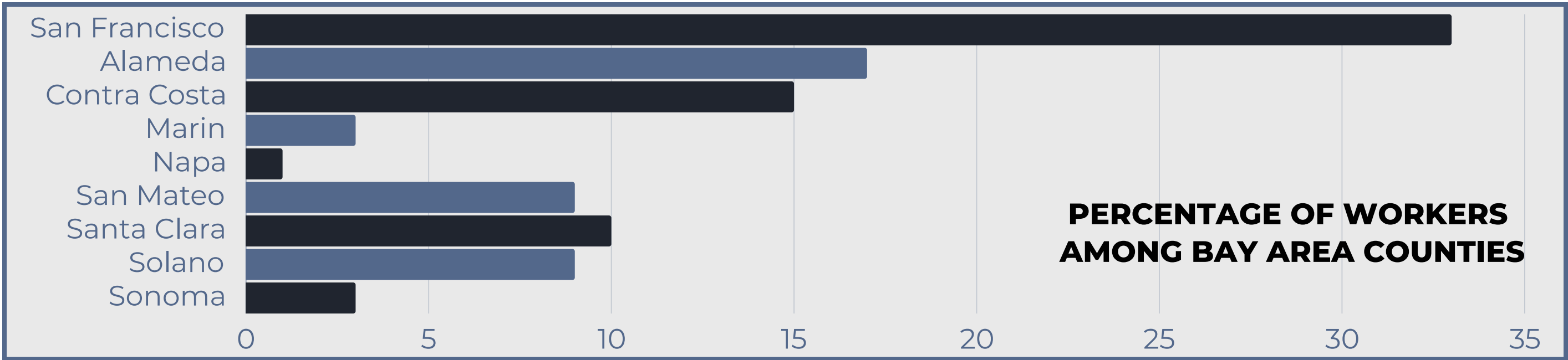
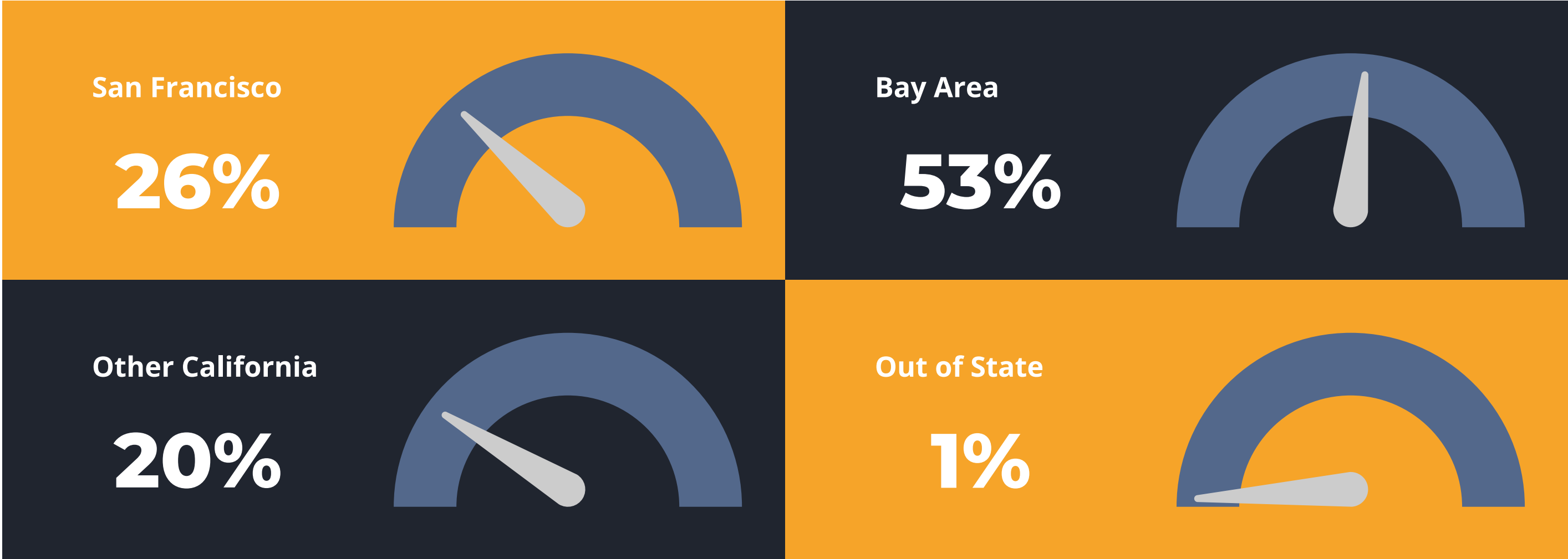


% OF FEMALE WORKERS	
San Francisco	4.16%
Bay Area	1.45%
Other California	1.18%
Out of State	0.54%



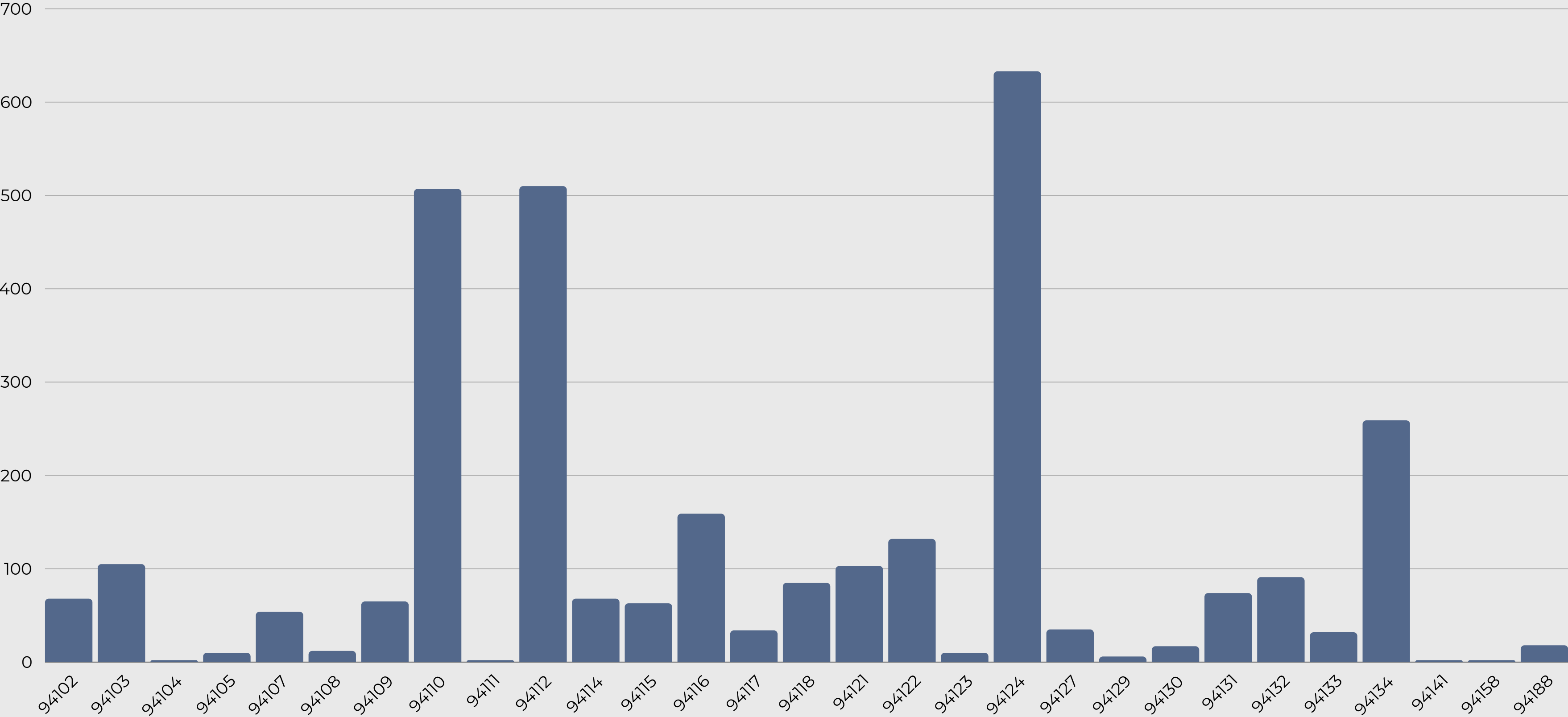
DISTRIBUTION OF WORK BY REGION

PERCENTAGE OF WORKERS AMONG ALL REGIONS



PERCENTAGE OF WORKERS AMONG BAY AREA COUNTIES

SAN FRANCISCO RESIDENTS BY ZIP CODE





LOCAL HIRING BY DEPARTMENT

MOHCD

The Mayor's Office of Housing and Community Development supports residents with affordable housing opportunities and essential services to build strong communities.



LOCAL HIRING BY PROJECT

MAYOR'S OFFICE OF HOUSING AND COMMUNITY DEVELOPMENT

PROJECT NAME	TOTAL WORK HOURS			TOTAL APPRENTICE HOURS		
	TOTAL	LOCAL	LOCAL %	TOTAL	LOCAL	LOCAL %
1064 MISSION	45	0	0%	0	0	--
1064 MISSION CLINIC	8	0	0%	0	0	--
180 JONES STREET	168,222	45,568	27%	38,106	15,366	40%
2340 SAN JOSE AVENUE	153,027	31,497	21%	21,185	9,348	44%
4200 GEARY NEW CONSTRUCTION AFFORDABLE HOUSING	69,369	23,195	33%	9,682	4,555	47%
4840 MISSION STREET VERTICAL	190,444	58,507	31%	34,709	19,519	56%
600 7TH STREET	187,932	30,462	16%	33,571	9,942	30%
681 FLORIDA	4	0	0%	0	0	--
730 STANYAN	80,815	16,145	20%	7,299	4,769	65%
78 HAIGHT STREET	1,262	262	21%	140	26	19%
CURRY SENIOR WELLNESS AND TECHNOLOGY CENTER	4,292	1,603	37%	312	260	83%
SHIRLEY CHISHOLM VILLAGE EDUCATOR HOUSING	262,302	61,002	23%	47,760	20,421	43%
THE KELSEY CIVIC CENTER CONSTRUCTION	70,619	12,220	17%	13,552	5,270	39%
YMCA CHILDCARE AT KAPUSO UPPER YARD	13,320	2,461	18%	778	72	9%

LOCAL HIRING BY TRADE

MAYOR'S OFFICE OF HOUSING AND COMMUNITY DEVELOPMENT

TRADE	TOTAL WORK HOURS			TOTAL APPRENTICE HOURS		
	TOTAL	LOCAL	LOCAL %	TOTAL	LOCAL	LOCAL %
ASBESTOS REMOVAL WORKER	374	0	0%	0	0	--
ASBESTOS WORKER, HEAT AND FROST INSULATOR	1,299	397	31%	231	72	31%
BRICKLAYER, BLOCKLAYER	1,587	112	7%	222	0	0%
BRICKTENDER	488	0	0%	0	0	--
BUILDING/CONSTRUCTION INSPECTOR AND FIELD SOILS AND MATERIAL TESTER	11	0	0%	0	0	--
CARPENTER AND RELATED TRADES	148,530	38,045	26%	33,667	18,290	54%
CARPET,LINOLEUM	6,538	1,532	23%	903	81	9%
CEMENT MASON	14,026	978	7%	1,791	851	47%
DRIVER	8,903	1,827	21%	0	0	--
DRYWALL INSTALLER/LATHER	54,612	9,148	17%	8,938	3,166	35%
ELECTRICIAN	65,193	24,471	38%	12,422	5,096	41%
ELEVATOR CONSTRUCTOR	1,450	0	0%	669	0	0%
FIELD SURVEYOR	2,059	322	16%	602	0	0%
GLAZIER	6,614	292	4%	2,005	286	14%
IRON WORKER	31,676	5,020	16%	5,523	1,641	30%
LABORER AND RELATED CLASSIFICATIONS	108,793	29,801	27%	5,397	3,134	58%
MARBLE MASON	80	0	0%	16	0	0%
MODULAR FURNITURE INSTALLER	921	0	0%	24	0	0%
OPERATING ENGINEER	26,257	6,205	24%	491	197	40%
PAINTER	30,450	7,390	24%	7,712	5,239	68%
PARKING AND HIGHWAY IMPROVEMENT PAINTER	7	0	0%	3	0	0%
PILE DRIVER	1,031	253	25%	253	253	100%
PLASTER TENDER	835	271	32%	0	0	--
PLASTERER	6,786	2,030	30%	1,288	828	64%
PLUMBER	43,494	8,813	20%	10,616	4,515	43%
ROOFER	10,199	175	2%	2,751	151	5%
SHEET METAL WORKER	21,049	4,070	19%	6,340	975	15%
TEAMSTER	17	0	0%	0	0	--
TILE FINISHER	3,489	116	3%	477	0	0%
TILE SETTER	3,966	195	5%	1,208	0	0%
TRAFFIC CONTROL/LANE CLOSURE (LABORER)	101	0	0%	0	0	--

LOCAL HIRING BY CONTRACTOR

MAYOR'S OFFICE OF HOUSING AND COMMUNITY DEVELOPMENT

CONTRACTOR NAME	TOTAL WORK HOURS			TOTAL APPRENTICE HOURS		
	TOTAL	LOCAL	LOCAL %	TOTAL	LOCAL	LOCAL %
A & B CONSTRUCTION	2,748	396	14%	125	0	0%
A&D AUTOMATIC GATE COMPANY	89	0	0%	0	0	--
AAC GLASS, INC.	3,183	70	2%	826	70	8%
ABM ELECTRICAL POWER SERVICES, LLC	6	0	0%	0	0	--
ACCESS SYSTEMS & SOLUTIONS, INC.	32	0	0%	0	0	--
AHLBORN STRUCTURAL STEEL	423	61	14%	79	61	77%
ALCAL SPECIALTY CONTRACTING, INC.	1,837	136	7%	492	0	0%
ALLIED FIRE PROTECTION	2,249	868	39%	396	376	95%
ALLIED FRAMERS, LLC	26,555	7,431	28%	6,529	4,382	67%
AMERICAN TILE & BRICK VENEER, INC	4,854	0	0%	959	0	0%
ANDERSON COMMERCIAL FLOORING	4,354	1,172	27%	710	8	1%
AQUA PROOF, INC	213	0	0%	0	0	--
ARBORIST NOW, INC.	16	0	0%	0	0	--
ARCHITECTURAL DESIGN & SIGNS	40	0	0%	0	0	--
ARCHITECTURAL GLASS & ALUMINUM CO.	251	85	34%	88	79	90%
ART ALGER INC., DBA PENINSULA CRANE & RIGGING	9	0	0%	0	0	--
ASBESTOS MANAGEMENT GROUP	406	0	0%	0	0	--
ASSOCIATED REBAR, INC.	1,736	0	0%	210	0	0%
B.E.E. PEST SERVICES.	5	0	0%	0	0	--
BAY AREA CONCRETES, INC.	216	48	22%	40	0	0%
BAY AREA TRAFFIC SOLUTIONS INC	101	0	0%	0	0	--
BAY CITY MECHANICAL, INC	1,075	590	55%	195	98	50%
BAY-TECH ELECTRIC INC.	530	139	26%	93	0	0%
BEAR SCAFFOLD AND SERVICES	2,515	199	8%	279	199	71%
BEI STEEL, INC.	1,411	440	31%	299	55	18%
BENNETT MARINE UTILITY	15	5	33%	0	0	--
BERKELEY CEMENT	28,742	2,247	8%	3,416	735	22%
BERKELEY CONCRETE PUMPING	63	0	0%	0	0	--

LOCAL HIRING BY CONTRACTOR

MAYOR'S OFFICE OF HOUSING AND COMMUNITY DEVELOPMENT

BESS TESTLAB, INC	26	0	0%	0	0	--
BIGGE CRANE & RIGGING	2,221	543	24%	39	39	100%
BIRD ELECTRIC, INC.	721	336	47%	0	0	--
BIRD SOLUTIONS INTERNATIONAL	84	0	0%	0	0	--
BJORK CONSTRUCTION CO INC	2,196	330	15%	382	156	41%
BLUE IRON FOUNDATIONS & SHORING	252	0	0%	0	0	--
BLUES ROOFING COMPANY	3,461	35	1%	456	35	8%
BOBCOMM INC. PACIFIC DAS	48	0	0%	0	0	--
BRAYER ELECTRIC COMPANY	10,736	2,996	28%	1,669	7	0%
BROADWAY MECHANICAL-CONTRACTORS, INC.	13,525	2,379	18%	3,781	1,075	28%
C3 CONCRETE SURFACE, INC.	100	0	0%	0	0	--
CA COMMERCIAL CLEANING, INC.	24	0	0%	0	0	--
CAHILL CONTRACTORS LLC	56,198	20,441	36%	10,753	7,967	74%
CALIFORNIA SOLAR INTEGRATORS, INC.	126	0	0%	0	0	--
CAN-AM CONSTRUCTION CLEANUP	1,624	0	0%	0	0	--
CAPITOL GLASS COMPANY	598	124	21%	192	124	65%
CARLILE MACY, INC.	237	0	0%	0	0	--
CASEY-FOGLI CONCRETE CONTRACTORS, INC	363	0	0%	0	0	--
CELL-CRETE CORPORATION	1,236	58	5%	242	0	0%
CEMEX CONSTRUCTION MATERIAL PACIFIC LLC	6,238	1,268	20%	0	0	--
CEMEX. INC.	709	149	21%	0	0	--
CENTRAL CONCRETE SUPPLY	1,427	139	10%	0	0	--
CENTRAL CONCRETE SUPPLY CO., INC.	256	6	2%	0	0	--
CF&T CONCRETE PUMPING	19	0	0%	0	0	--
CHAMPION CONTRACTORS	425	8	2%	8	8	100%
CHARLES PANKOW BUILDERS, LTD.	16	0	0%	0	0	--
CLEAN CUT CONCRETE, INC	2,381	0	0%	421	0	0%
CMC REBAR	6,123	1,328	22%	2,087	1,305	63%
CMC TRAFFIC CONTROL SPECIALISTS DBA CMC CONSTRUCTION	838	373	45%	27	11	41%
COAST BUILDING PRODUCTS	201	0	0%	14	0	0%

LOCAL HIRING BY CONTRACTOR

MAYOR'S OFFICE OF HOUSING AND COMMUNITY DEVELOPMENT

COAST BUILDING PRODUCTS,	1,956	0	0%	24	0	0%
COLEVAN ELECTRIC	130	27	21%	0	0	--
COMMUNITY PLAYGROUNDS, INC.	593	0	0%	0	0	--
COMPACTOR MANAGEMENT COMPANY, LLC	18	0	0%	0	0	--
COURTNEY INC.	2,672	10	0%	1,177	10	1%
CREATIVE CEILINGS INC.	1,240	0	0%	53	0	0%
CREATIVE SHOWER DOOR CORP	50	0	0%	0	0	--
CUPERTINO ELECTRIC INC.	972	562	58%	49	0	0%
CUTTING EDGE DRAPERY	26	0	0%	0	0	--
D.W. NICHOLSON CORPORATION	32	0	0%	8	0	0%
DALEY'S DRYWALL & TAPING, INC	18,961	3,549	19%	2,921	950	33%
DASILVA UNDERGROUND CONSTRUCTION	475	34	7%	89	0	0%
DE BELLA MECHANICAL, INC.	764	0	0%	97	0	0%
DEES-HENNESSEY, INC.	867	10	1%	10	10	100%
DELLA MAGGIORE TILE, INC.	64	0	0%	16	0	0%
DOLAN CONCRETE CONSTRUCTION	7,537	1,201	16%	1,081	872	81%
DOYLES WORK COMPANY	1,430	0	0%	0	0	--
DPW, INC.	579	133	23%	0	0	--
DR TRAFFIC CONTROL LLC	194	79	41%	14	14	100%
DRILL TECH DRILLING & SHORING, INC	2,469	334	14%	365	281	77%
E & S MASONRY CORP	254	0	0%	0	0	--
E.J. WEBER ELECTRIC COMPANY	12,039	5,006	42%	2,557	1,222	48%
ECO FIRE SPRINKLERS	1,005	0	0%	22	0	0%
EGAN PLUMBING, INC.	7,959	2,622	33%	2,870	1,407	49%
EGGLI LANDSCAPE CONTRACTORS, INC.	44	0	0%	14	0	0%
ENGEL HOLDINGS, INC. DBA SAFWAY ATLANTIC	2,001	1,882	94%	16	0	0%
EVANS BROTHERS CABINETS	643	270	42%	24	0	0%
EVANS BROTHERS INC	3,316	784	24%	40	40	100%
F3 & ASSOCIATES INC.	244	0	0%	49	0	0%
FERTADO HEATING & AIR	11,845	1,850	16%	4,434	0	0%

LOCAL HIRING BY CONTRACTOR

MAYOR'S OFFICE OF HOUSING AND COMMUNITY DEVELOPMENT

FLOOR SEAL TECHNOLOGY	592	0	0%	0	0	--
FLYNN TRANSPORT	266	266	100%	0	0	--
FOUNDATION BUILDING MATERIAL, LLC	1,177	0	0%	0	0	--
FREAS PLASTERING COMPANY INC.	3,876	1,244	32%	514	333	65%
FREY INCORPORATED	16,656	2,573	15%	2,911	1,757	60%
FUSE BUILDS, LLC FORMERLY LIBERTY WEST	315	0	0%	32	0	0%
G & M APPLIANCE SUPPLY INC	171	123	72%	0	0	--
G & M APPLIANCE SUPPLY, INC.	310	139	45%	0	0	--
GECMS INC	152	16	11%	0	0	--
GLOBAL SPECIALTIES DIRECT	40	0	0%	0	0	--
GOLDEN STATE STEEL & STAIR, INC.	1,497	0	0%	397	0	0%
GONSALVES & SANTUCCI INC DBA CONCO PUMPING	24	0	0%	0	0	--
GRANITE EXCAVATION & DEMOLITION INC.	1,926	1,429	74%	785	627	80%
GREG'S TRUCKING SERVICE, INC.	7	0	0%	0	0	--
GROUND CONTROL SYSTEMS.	52	0	0%	0	0	--
GROUND CONTROL, INC.	3,378	797	24%	22	22	100%
GROUND FORCE ENTERPRISES	1	0	0%	0	0	--
H. V. WELKER CO., INC. DBA WELKER BROS.	204	24	12%	24	24	100%
HARRIS HOISTING	873	873	100%	0	0	--
HEAVENLY GREENS CONSTRUCTION INC, DBA HEAVENLY GRE	219	0	0%	16	0	0%
HELIX ELECTRIC, INC.	1,361	1,287	95%	461	455	99%
HERCULES BUILDERS	1,934	355	18%	0	0	--
HOUSE CO. CONSTRUCTION	2,554	495	19%	991	447	45%
HOWARD'S EARTH BORING SERVICE, INC	144	0	0%	0	0	--
INSULATION SPECIALITES, INC	94	78	83%	16	0	0%
INTERMOUNTAIN ELECTRIC COMPANY	10,140	3,958	39%	2,914	1,736	60%
INTERSTATE CONCRETE PUMPING	509	20	4%	0	0	--
INTERSTATE GRADING & PAVING INC	129	4	3%	8	0	0%
J. FLORES CONSTRUCTION COMPANY, INC.	806	200	25%	62	37	60%
JD FIRESTOP PROS, INC.	311	43	14%	47	0	0%

LOCAL HIRING BY CONTRACTOR

MAYOR'S OFFICE OF HOUSING AND COMMUNITY DEVELOPMENT

JERRY THOMPSON & SONS PAINTING	403	0	0%	15	0	0%
JOHN JACKSON MASONRY	1,212	112	9%	174	0	0%
JOSEPH J ALBANESE INC	9	0	0%	0	0	--
JSS CONSTRUCTION INC.	264	166	63%	98	98	100%
KBI PAINTING, INC.	525	345	66%	77	77	100%
KEVIN M SULLIVAN & ASSOCIATES, INC.	540	0	0%	0	0	--
KINGDOM PIPELINES, INC.	1,690	692	41%	0	0	--
KONE, INC.	446	0	0%	202	0	0%
KZ TILE COMPANY	421	311	74%	3	0	0%
L C GENERAL ENGINEERING & CONSTRUCTION, INC.	14	0	0%	0	0	--
LANDAVAZO BROTHERS INC	583	0	0%	0	0	--
LARGO CONCRETE, INC.	42,251	4,872	12%	5,923	1,820	31%
LEVEL 5 INC.	1,349	0	0%	205	0	0%
LOMBARDO DIAMOND CORE DRILLING CO., INC.	4	0	0%	0	0	--
LUK AND ASSOCIATES	302	90	30%	0	0	--
M.PEREZ COMPANY, INC. DBA HENLEY & COMPANY	5,413	2,638	49%	952	719	76%
MALCOLM DRILLING COMPANY, INC.	8,373	1,571	19%	0	0	--
MARINA MECHANICAL	2,273	1,059	47%	945	872	92%
MARINSHIP DEVELOPMENT INTEREST LLC	161	96	60%	16	16	100%
MARTIN M. RON ASSOC. INC.	1,256	232	18%	553	0	0%
MAXIM CRANE WORKS, L.P.	3,812	0	0%	109	0	0%
MCGOLDRICK ENTERPRISES, INC. DBA MTB	33	0	0%	16	0	0%
MCMILLAN DATA COMMUNICATIONS, INC.	1,881	281	15%	0	0	--
MCMILLAN ELECTRIC	10,013	2,473	25%	1,012	0	0%
MESA ENERGY SYSTEMS, INC	4	0	0%	0	0	--
METAL DESIGN & STRATEGY	1,553	0	0%	0	0	--
MGM DRYWALL, INC.	28,519	6,980	24%	7,033	5,032	72%
MISSION CITY REBAR, INC.	44	31	69%	19	19	100%
MONARCH MECHANICAL	181	40	22%	7	0	0%
MORROW EQUIPMENT COMPANY	61	0	0%	0	0	--

LOCAL HIRING BY CONTRACTOR

MAYOR'S OFFICE OF HOUSING AND COMMUNITY DEVELOPMENT

N.M.N CONSTRUCTION, INC.	925	0	0%	0	0	--
NATION WIDE BIRD CONTROL, INC.	38	0	0%	0	0	--
NATIONAL AIR BALANCE CO.,INC.	128	0	0%	0	0	--
NIBBI BROS ASSOCIATES, INC. DBA NIBBI CONCRETE	15,552	7,905	51%	2,209	1,275	58%
NIBBI BROTHERS ASSOCIATES, INC.	11,533	6,346	55%	513	477	93%
NOAH CONCRETE CORPORATION	16	0	0%	0	0	--
NORTH COUNTIES DRYWALL INC	9,195	380	4%	2,640	0	0%
O' KANE STRUCTURAL STEEL, INC	2,418	2,033	84%	0	0	--
O'BRIEN MECHANICAL, INC. II	11,128	868	8%	1,522	320	21%
OM3 INC	1,499	336	22%	153	49	32%
OTIS ELEVATOR COMPANY- SAN FRANCISCO	1,005	0	0%	467	0	0%
PACIFIC STATES ENVIRONMENTAL CONTRACTORS	962	50	5%	26	8	31%
PACIFIC STEEL GROUP (PSG)	9,214	67	1%	1,583	67	4%
PACIFIC STRUCTURES, INC.	278	0	0%	0	0	--
PARAGON MECHANICAL INC.	352	34	10%	49	0	0%
PAUL GREATHOUSE EXCAVATION AND GRADING INC.	436	0	0%	0	0	--
PENINSULATORS, INC.	340	0	0%	24	0	0%
PERFORMANCE CAULKING	1,414	106	7%	154	106	69%
PERFORMANCE CONTRACTING INC	99	0	0%	9	0	0%
PHOENIX ELECTRIC COMPANY	6,627	3,095	47%	367	363	99%
PLATINUM INSULATION INC	1,195	91	8%	335	91	27%
PMN DESIGN ELECTRIC, INC.	17,186	8,050	47%	3,647	1,659	45%
PMR PACIFIC SEALANTS, LLC	13	0	0%	0	0	--
POWER SYSTEMS TESTING CO.	3	0	0%	0	0	--
PRIBUSS ENGINEERING, INC.	1,360	85	6%	486	85	17%
PRIORITY ARCHITECTURAL GRAPHICS	173	29	17%	29	29	100%
PROGRESS GLASS COMPANY INC	108	13	12%	30	13	44%
QLM, INC.	6,593	0	0%	465	0	0%
RCM FIRE PROTECTION, INC.	3,481	909	26%	1,766	909	51%
REBARBER ENTERPRISES	33	7	22%	10	0	0%

LOCAL HIRING BY CONTRACTOR

MAYOR'S OFFICE OF HOUSING AND COMMUNITY DEVELOPMENT

RFJ MEISWINKEL COMPANY	4,161	866	21%	496	350	71%
RICHARD HANCOCK, INC.	1,088	132	12%	339	132	39%
RIDGELINE ENGINEERING	21	0	0%	0	0	--
RISER CONSTRUCTION CO., INC.	52	0	0%	0	0	--
ROCKAWAY CONSTRUCTION, INC.	1,955	0	0%	1,023	0	0%
RT WESTERN, INC.	1,318	888	67%	184	152	83%
S.J. GENERAL BUILDING MAINTENANCE	176	88	50%	0	0	--
SABAH INTERNATIONAL INC.	88	0	0%	0	0	--
SAN FRANCISCO INTERIORS	658	409	62%	144	139	97%
SAN FRANCISCO INTERIORS, INC.	785	379	48%	260	260	100%
SAVATREE LLC	27	0	0%	0	0	--
SCAFFOLD INSPECTION & TESTING CO.	72	0	0%	0	0	--
SCAFFOLD SOLUTIONS, INC.	3,962	914	23%	1,132	758	67%
SERVICE METAL PRODUCTS	116	0	0%	0	0	--
SHEEDY DRAYAGE CO	37	8	22%	13	0	0%
SHEERAN PIPELINE, INC.	4,144	887	21%	647	0	0%
SHILLINGSBURG VENTURES, DBA REBARBER ENTERPRISES	15	13	92%	0	0	--
SHOOTER AND BUTTS, INC.	5,667	890	16%	0	0	--
SIEMENS INDUSTRY INC	126	0	0%	0	0	--
SIGNCRAFT, INC.	52	0	0%	0	0	--
SILVERADO CONTRACTORS, INC.	157	0	0%	18	0	0%
SKYLINE SCAFFOLD, INC.	1,122	404	36%	395	123	31%
SOUTHWEST STEEL OF CA	796	2	0%	249	0	0%
SPECIALTIES ETC..	185	114	62%	2	0	0%
SPECIALTIES, ETC. CORP	356	51	14%	119	0	0%
STE ELECTRIC DBA SOLAR TECHNOLOGIES	54	0	0%	0	0	--
STOCKHAM CONSTRUCTION, INC.	345	4	1%	44	0	0%
STRIPING GRAPHICS	7	0	0%	3	0	0%
SULLIVAN CONSTRUCTION CO INC	1,197	815	68%	128	128	100%
SUN LIGHT & POWER	112	0	0%	0	0	--

LOCAL HIRING BY CONTRACTOR

MAYOR'S OFFICE OF HOUSING AND COMMUNITY DEVELOPMENT

SUNSHIELD SOLUTIONS, INC.	556	0	0%	0	0	--
SUPERIOR AUTOMATIC SPRINKLER CO	316	0	0%	0	0	--
TAMALPAIS COMMERCIAL CABINETRY	794	0	0%	0	0	--
TEMPER INSULATION CO.,INC.	1,020	326	32%	118	72	61%
TOM'S METAL SPECIALISTS, INC.	1,384	1,012	73%	120	96	80%
TRI CITY APPLIANCE INSTALLATION	290	0	0%	0	0	--
U.S. PERMA, INC. DBA CALIFORNIA TILE INSTALLERS	2,197	0	0%	723	0	0%
ULTIMATE KLEEN SOLUTIONS	347	165	48%	0	0	--
UNITED SITE SERVICES OF CALIFORNIA	6	0	0%	0	0	--
UNIVERSAL PLASTICS	296	98	33%	139	98	70%
USGA, INC.	2,425	0	0%	869	0	0%
VALDEZ PAINTING	145	72	50%	16	16	100%
VALDEZ PLASTERING, INC	2,909	213	7%	311	0	0%
VALUE FIRE PROTECTION, INC.	1,282	480	37%	0	0	--
VAN MULDER SHEET METAL, INC.	962	5	1%	5	5	100%
W.C. MALONEY, LLC	51	0	0%	0	0	--
W.L .HICKEY SONS, INC.	1,922	792	41%	463	344	74%
WAHIDI ENTERPRISES, INC DBA NOR CAL WATERPROOFING	807	0	0%	387	0	0%
WEBCOR CONCRETE, A DIVISION OF WEBCOR CRAFT, L.P.	10,413	2,211	21%	1,297	970	75%
WESTATES MECHANICAL CORPORATION	14	0	0%	0	0	--
WESTERN ROOFING SERVICE	637	0	0%	137	0	0%
YUM'S MECHANICAL CO., INC.	169	165	98%	0	0	--

MUNICIPAL TRANSPORTATION AGENCY



The San Francisco Municipal Transportation Agency (SFMTA) is a department of the City and County of San Francisco responsible for the management of all ground transportation in the city. The SFMTA has oversight over the Municipal Railway (Muni) public transit, as well as bicycling, paratransit, parking, traffic, walking, and taxis.

LOCAL HIRING BY PROJECT

MUNICIPAL TRANSPORTATION AGENCY

PROJECT NAME	TOTAL WORK HOURS			TOTAL APPRENTICE HOURS		
	TOTAL	LOCAL	LOCAL %	TOTAL	LOCAL	LOCAL %
1289: VAN NESS CORRIDOR TRANSIT IMPROVEMENT PROJECTS - PHASE I	1,378	36	3%	16	0	0%
1301 JOC LOCAL	232	232	100%	116	116	100%
1302 JOC LOCAL	742	60	8%	196	0	0%
1304 MUNI METRO SYSTEM KING SUBSTATION UPGRADE	11,239	1,092	10%	96	8	8%
1313R1 - 16TH STREET IMPROVEMENT PROJECT	25,872	10,268	40%	3,706	1,673	45%
1314 - REPLACEMENT OF MANUAL TROLLEY SWITCH SYSTEM PHASE I	237	44	19%	12	0	0%
1316 - WOODS FACILITY REHABILITATION - ELECTRICAL BUS CHARGING STATION PILOT PROGRAM	122	116	95%	86	86	100%
1317R - TRANSBAY TRANSIT CENTER TRACTION POWER IMPROVEMENT	550	358	65%	0	0	--

LOCAL HIRING BY TRADE

TRADE	TOTAL WORK HOURS			TOTAL APPRENTICE HOURS		
	TOTAL	LOCAL	LOCAL %	TOTAL	LOCAL	LOCAL %
BUILDING/CONSTRUCTION INSPECTOR AND FIELD SOILS AND MATERIAL TESTER	16	8	50%	4	4	100%
CARPENTER AND RELATED TRADES	588	0	0%	0	0	--
CEMENT MASON	1,433	432	30%	172	172	100%
DRIVER	19	1	7%	0	0	--
ELECTRICAL UTILITY LINEMAN	500	0	0%	0	0	--
ELECTRICIAN	3,518	822	23%	104	104	100%
LABORER AND RELATED CLASSIFICATIONS	11,565	3,843	33%	604	604	100%
OPERATING ENGINEER	2,300	872	38%	0	0	--
PLUMBER	21	0	0%	0	0	--
ROOFER	116	116	100%	58	58	100%
SHEET METAL WORKER	36	0	0%	7	0	0%
TEAMSTER	19	0	0%	0	0	--
TRAFFIC CONTROL/LANE CLOSURE (LABORER)	56	8	14%	0	0	--

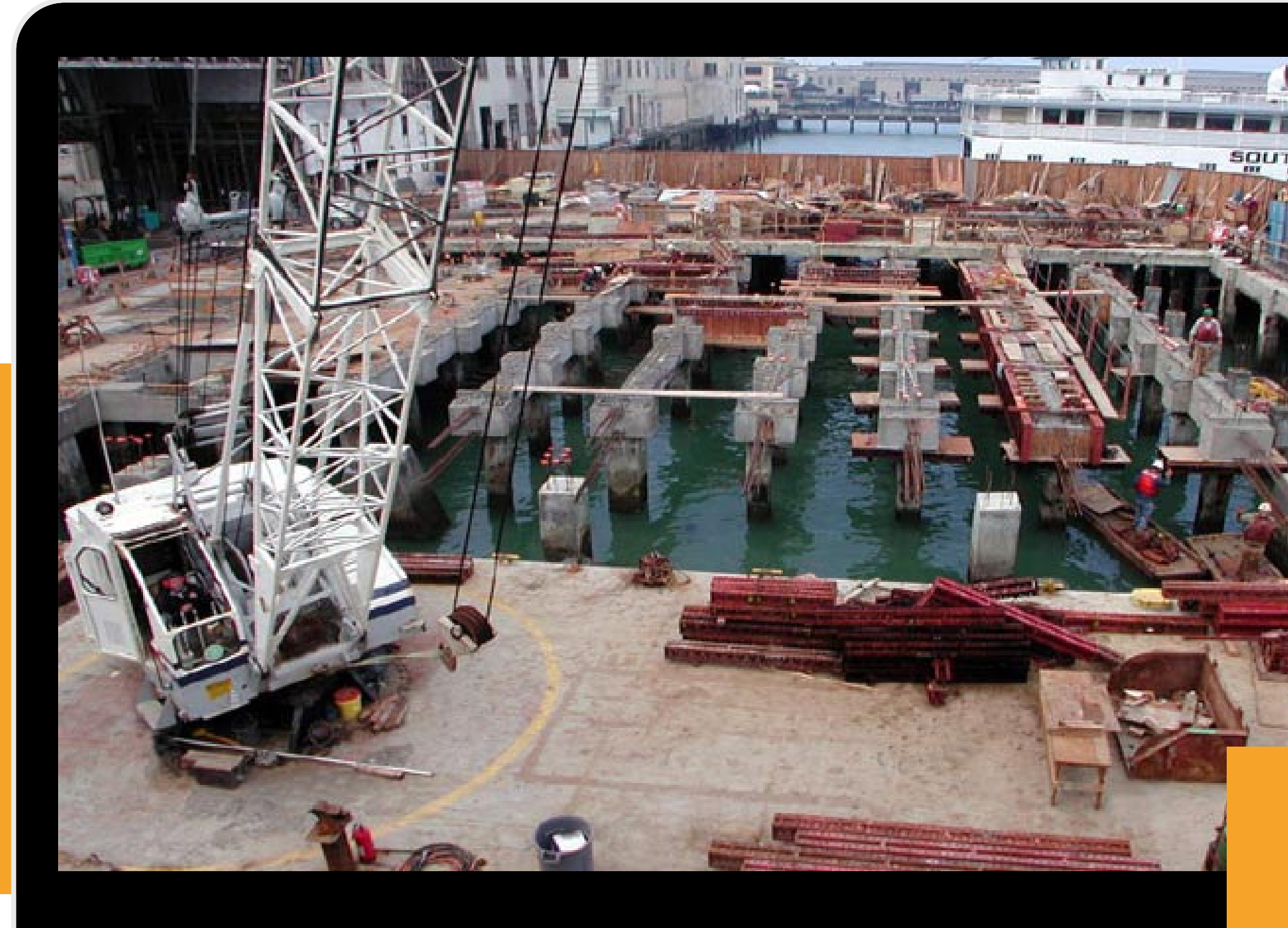
LOCAL HIRING BY CONTRACTOR

MUNICIPAL TRANSPORTATION AGENCY

CONTRACTOR NAME	TOTAL WORK HOURS			TOTAL APPRENTICE HOURS		
	TOTAL	LOCAL	LOCAL %	TOTAL	LOCAL	LOCAL %
BAUMAN LANDSCAPE AND CONSTRUCTION	659	0	0%	0	0	--
BAY TECH ENGINEERING, INC.	930	618	66%	96	96	100%
BECKER ELECTRIC INC.	740	343	46%	0	0	--
BLOCKA CONSTRUCTION	6	0	0%	0	0	--
CAL PACIFIC SYSTEMS	21	0	0%	0	0	--
CALIFORNIA ENVIRONMENTAL SYSTEMS, INC	15	0	0%	0	0	--
CEMEX CONSTRUCTION MATERIAL PACIFIC LLC	19	1	7%	0	0	--
CF ARCHIBALD PAVING INC.	68	0	0%	0	0	--
CMC TRAFFIC CONTROL SPECIALISTS DBA CMC CONSTRUCTION	816	198	24%	0	0	--
CONSOLIDATED ENGINEERING LABORATORIES	12	4	33%	8	4	50%
DIRECT DIGITAL CONTROLS INC.	7	0	0%	0	0	--
DMZ BUILDERS	3,394	0	0%	25	0	0%
GECMS INC	40	16	40%	0	0	--
HI-VOLTAGE SPLICING CO., INC.	160	0	0%	0	0	--
INTELLIGENT TECHNOLOGIES AND SERVICES, INC.	40	0	0%	0	0	--
JMB CONSTRUCTION INC	1,422	454	32%	176	176	100%
M. HERNANDEZ CONSTRUCTION, INC.	1,980	1,568	79%	550	290	53%
MARINA LANDSCAPE, INC.	1,229	0	0%	264	0	0%
MCKEE AND COMPANY ELECTRIC	79	6	8%	6	0	0%
MITCHELL ENGINEERING	179	171	96%	0	0	--
NOR CAL PIPELINE SERVICES	3,035	0	0%	487	0	0%
PACIFIC TEST AND BALANCE, INC.	15	0	0%	7	0	0%
PHOENIX ELECTRIC COMPANY	840	263	31%	22	8	36%
PIONEER CONTRACTORS, INC.	116	116	100%	58	58	100%
PROFESSIONAL TELECOMMUNICATIONS SERVICES, INC.	32	0	0%	8	0	0%
RED DIPPER, INC.	231	0	0%	98	0	0%
RELIANCE ENGINEERING INC	104	0	0%	0	0	--
RK ENGINEERING INC	2,340	1,161	50%	172	172	100%
RMA GROUP	4	4	100%	0	0	--
RONAN CONSTRUCTION, INC.	1,085	1,085	100%	95	95	100%
TITAN SERVICES, INC	236	0	0%	0	0	--
TOTAL TRAFFIC CONTROL, INC.	96	8	8%	0	0	--
WAYNE E. SWISHER CEMENT CONTRACTOR, INC.	56	0	0%	0	0	--
YERBA BUENA ENGINEERING & CONSTRUCTION, INC.	125	30	24%	0	0	--

PORT OF SAN FRANCISCO

The Port of San Francisco manages 7.5 miles of waterfront that is home to popular destinations and attractions, historic districts, small businesses and robust maritime opportunities. The Port works to advance environmentally and financially sustainable maritime, recreational, and economic opportunities for the City, Bay Area, and California.



LOCAL HIRING BY PROJECT

PORT OF SAN FRANCISCO

PROJECT NAME	TOTAL WORK HOURS			TOTAL APPRENTICE HOURS		
	TOTAL	LOCAL	LOCAL %	TOTAL	LOCAL	LOCAL %
PIER 70 - INTERIM BMP WORK	3,230	1,044	32%	0	0	--
23-450 ALCATRAZ EMBARCATION	3,061	323	11%	547	60	11%
2842 MAINTENANCE DREDGING 2022-2024	2,321	0	0%	77	0	0%
2843 PIER 70 GRADING AND ABATEMENT	1,032	465	45%	80	56	70%

LOCAL HIRING BY TRADE

TRADE	TOTAL WORK HOURS			TOTAL APPRENTICE HOURS		
	TOTAL	LOCAL	LOCAL %	TOTAL	LOCAL	LOCAL %
ASBESTOS REMOVAL WORKER	32	0	0%	0	0	--
CARPENTER AND RELATED TRADES	477	232	49%	36	29	81%
CEMENT MASON	150	8	5%	16	0	0%
DREDGER (OPERATING ENGINEER)	2,164	0	0%	0	0	--
DRIVER	124	38	30%	0	0	--
DRYWALL INSTALLER/LATHER	151	0	0%	98	0	0%
ELECTRICIAN	491	0	0%	0	0	--
FIELD SURVEYOR	24	0	0%	8	0	0%
IRON WORKER	40	0	0%	8	0	0%
LABORER AND RELATED CLASSIFICATIONS	2,909	1,139	39%	40	32	80%
OPERATING ENGINEER	1,347	314	23%	89	0	0%
PAINTER	150	8	5%	53	0	0%
PARKING AND HIGHWAY IMPROVEMENT PAINTER	14	0	0%	0	0	--
PILE DRIVER	267	0	0%	140	0	0%
PLASTERER	35	0	0%	5	0	0%
PLUMBER	680	7	1%	85	0	0%
ROOFER	277	55	20%	110	55	50%
SHEET METAL WORKER	83	32	39%	8	0	0%
TILE FINISHER	64	0	0%	0	0	--

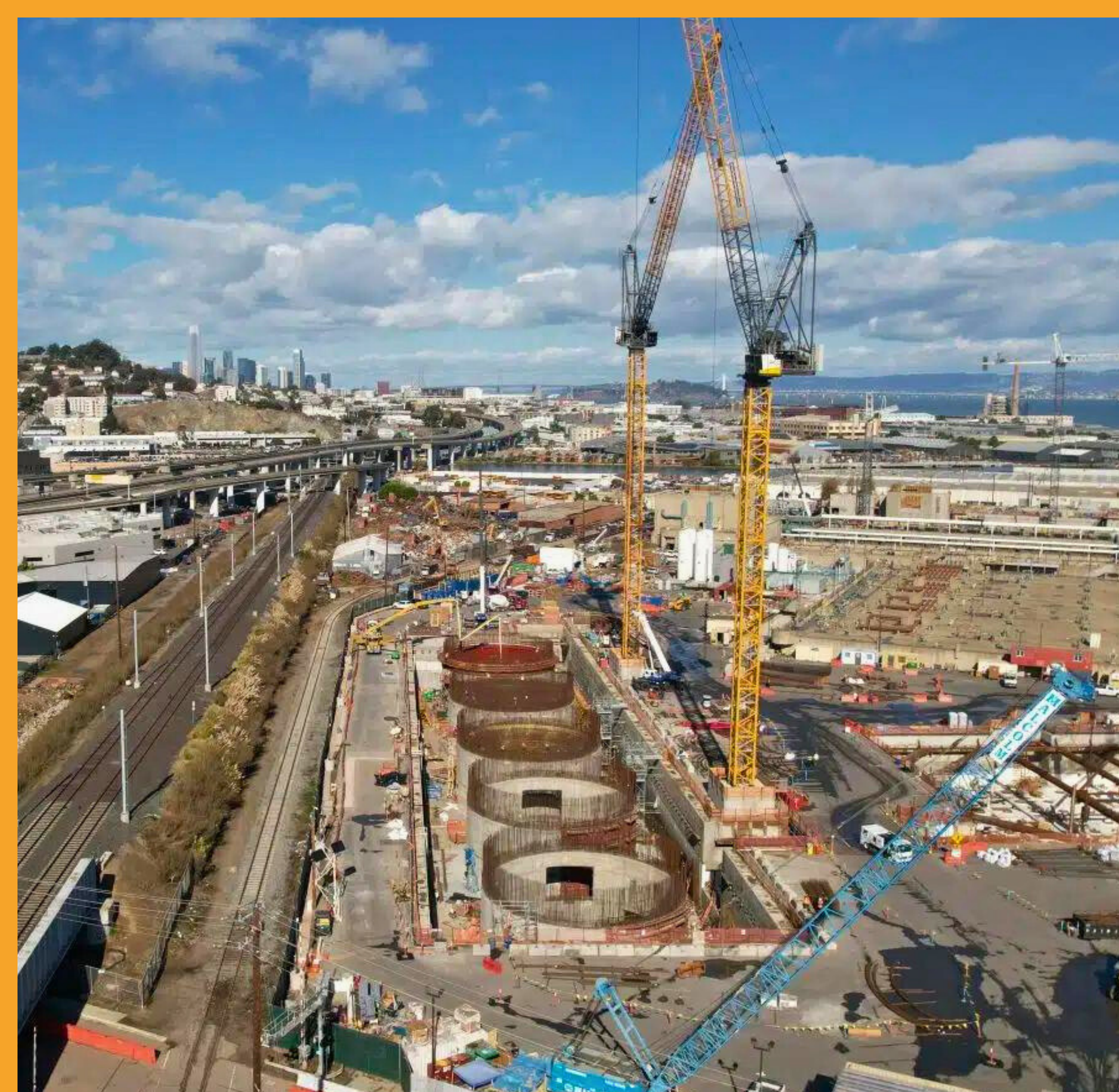
LOCAL HIRING BY CONTRACTOR

PORT OF SAN FRANCISCO

CONTRACTOR NAME	TOTAL WORK HOURS			TOTAL APPRENTICE HOURS		
	TOTAL	LOCAL	LOCAL %	TOTAL	LOCAL	LOCAL %
ACCO ENGINEERED SYSTEMS	108	0	0%	0	0	--
AHLBORN STRUCTURAL STEEL	56	0	0%	16	0	0%
BAY CITY MECHANICAL, INC	94	39	41%	8	0	0%
CINQUINI & PASSARINO, INC.	24	0	0%	8	0	0%
COMPASS ENGINEERING CONTRACTORS, INC	14	0	0%	0	0	--
CONFLO SERVICES, INC.	96	0	0%	0	0	--
COURTNEY INC.	161	0	0%	55	0	0%
DE HARO RAMIREZ GROUP	342	153	45%	0	0	--
DELTA BAY WATERPROOFING	116	55	47%	55	55	100%
DLI MECHANICAL, INC.	517	0	0%	85	0	0%
GECMS INC	3,065	994	32%	0	0	--
HVYW8 TRUCKING	124	38	30%	0	0	--
J. FLORES CONSTRUCTION COMPANY, INC.	142	50	35%	0	0	--
MCMILLAN ELECTRIC	491	0	0%	0	0	--
NIBBI BROTHERS ASSOCIATES, INC.	58	58	100%	0	0	--
NORTH COUNTIES DRYWALL INC	195	0	0%	151	0	0%
ON THE LEVEL CONCRETE	56	8	14%	0	0	--
POWER ENGINEERING CONTRACTORS, INC	375	0	0%	152	0	0%
PREMIER STONE AND TILE	230	0	0%	8	0	0%
REBARBER ENTERPRISES	24	11	45%	12	5	43%
THE DUTRA GROUP	2,321	0	0%	77	0	0%
THE GEHWEILER CORPORATION/DBA GREENSCAPE	10	0	0%	0	0	--
VALDEZ PAINTING	90	8	8%	0	0	--
VALDEZ PLASTERING, INC	51	0	0%	5	0	0%
WESTATES MECHANICAL CORPORATION	44	0	0%	0	0	--
YERBA BUENA ENGINEERING & CONSTRUCTION, INC.	842	419	50%	72	56	78%

PUBLIC UTILITIES COMMISSION

The San Francisco Public Utilities Commission provides retail drinking water & wastewater services to the City of San Francisco, wholesale water to three Bay Area counties, green hydroelectric & solar power to Hetch Hetchy electricity customers, and power to the residents & businesses of San Francisco through the CleanPowerSF program.



LOCAL HIRING BY PROJECT

PUBLIC UTILITIES COMMISSION

PROJECT NAME	TOTAL WORK HOURS			TOTAL APPRENTICE HOURS		
	TOTAL	LOCAL	LOCAL %	TOTAL	LOCAL	LOCAL %
DB-121R2 - MOCCASIN POWERHOUSE GENERATOR REHABILITATION	20,357	2,798	14%	1,995	339	17%
DB-129.1 - BAY CORRIDOR TRANSMISSION & DISTRIBUTION - PHASE 2 (2019) NORTH	120	16	13%	0	0	--
DB-130 - BAY CORRIDOR TRANSMISSION AND DISTRIBUTION - PHASE 3 (2019)	22,595	11,451	51%	713	499	70%
DB-132 - NEW TREASURE ISLAND WASTEWATER TREATMENT PLANT	32,516	13,654	42%	6,724	4,306	64%
DB-135 - O'SHAUGHNESSY DAM NEW BULKHEAD SYSTEM	2,795	0	0%	0	0	--
HH-1003R - MOCCASIN POWERHOUSE GENERATOR STEP UP TRANSFORMER INSTALLATION	3,865	3,034	78%	813	813	100%
HH-1004 - MASTER AS-NEEDED TREE SERVICES - HETCH HETCHY	6,312	2,662	42%	124	0	0%
HH-1005 - SAN JOAQUIN PIPELINE VALVE AND SAFE ENTRY IMPROVEMENTS: PHASE 1A	19,777	13,568	69%	3,146	1,952	62%
HH-1006 - SAN JOAQUIN PIPELINES VALVE AND SAFE ENTRY PHASE 1B	8,610	4,946	57%	1,474	691	47%
HH-1007 - TRANSMISSION LINE 7/8 UPGRADES	92,961	36,932	40%	12,249	2,108	17%
HH-1011 - O'SHAUGHNESSY DAM INSTREAM FLOW RELEASE VALVE REPLACEMENT	641	621	97%	53	53	100%
HH-1014E - 2023 STORM DAMAGE EMERGENCY ROAD REPAIR	83,473	61,566	74%	11,392	8,097	71%
JOB ORDER CONTRACT 50R - HVAC ENERGY EFFICIENCY	232	99	43%	44	44	100%
JOB ORDER CONTRACT 53R3 - ELECTRICAL	2,238	2,238	100%	0	0	--
JOB ORDER CONTRACT 70 - GENERAL ENGINEERING	221	173	78%	0	0	--
JOB ORDER CONTRACT 71R - ELECTRICAL	195	195	100%	32	32	100%
JOB ORDER CONTRACT 74 - GENERAL ENGINEERING	3,580	2,294	64%	195	0	0%
JOB ORDER CONTRACT 76 - GENERAL ENGINEERING	2,089	359	17%	0	0	--
JOB ORDER CONTRACT 78 - GENERAL ENGINEERING	76	76	100%	0	0	--
JOB ORDER CONTRACT 81 - GENERAL ENGINEERING	4,350	3,300	76%	676	676	100%
JOB ORDER CONTRACT 83R - GENERAL BUILDING CONSTRUCTION	25,733	13,989	54%	3,055	2,911	95%
JOB ORDER CONTRACT 85R - GENERAL ENGINEERING	8,426	2,302	27%	386	0	0%
JOB ORDER CONTRACT 86 - GENERAL ENGINEERING	3,900	298	8%	0	0	--
JOB ORDER CONTRACT 87 - GENERAL ENGINEERING	19,760	13,989	71%	2,250	1,914	85%
JOB ORDER CONTRACT 89 - GENERAL ENGINEERING	4,975	3,110	63%	392	64	16%
JOB ORDER CONTRACT 90 - GENERAL ENGINEERING	7,836	3,719	47%	228	144	63%
JOB ORDER CONTRACT 91 - GENERAL ENGINEERING	2,831	2,306	81%	1,387	1,010	73%
JOB ORDER CONTRACT 92 - GENERAL ENGINEERING	137,253	114,750	84%	5,006	3,799	76%
JOB ORDER CONTRACT 95 - ELECTRICAL CONSTRUCTION	2,299	1,826	79%	161	0	0%

LOCAL HIRING BY PROJECT

PUBLIC UTILITIES COMMISSION

JOB ORDER CONTRACT 96 - GENERAL ENGINEERING	1,533	1,533	100%	0	0	--
PW-009R - AS-NEEDED ELECTRICAL DISTRIBUTION INSTALLATION AND CONSTRUCTION SUPPORT	17,709	0	0%	4,015	0	0%
WD-2687R - AUXILIARY WATER SUPPLY SYSTEM PUMPING STATION NO. 2 IMPROVEMENTS	95	0	0%	0	0	--
WD-2717 - COLLEGE HILL RESERVOIR OUTLET STRUCTURE AND PIPELINE	36,741	14,313	39%	3,865	2,784	72%
WD-2718 - 8-INCH AND 24-INCH WATER MAIN INSTALLATION ON PROSPECT, FAIR, COSO AND COLERIDGE	34,861	15,372	44%	4,694	3,818	81%
WD-2776 - SAN FRANCISCO WESTSIDE RECYCLED WATER TREATMENT FACILITY AT OCEANSIDE PLANT	6,477	1,291	20%	551	68	12%
WD-2794B - SUNOL LONG TERM IMPROVEMENTS - ALAMEDA CREEK WATERSHED CENTER	6,420	2,203	34%	155	48	31%
WD-2797 - SAN FRANCISCO WESTSIDE RECYCLED WATER PUMP STATION AND RESERVOIR	1,779	912	51%	292	292	100%
WD-2801 - 8-, 12-INCH AND 16-INCH WATER MAIN, SEWER AND PAVEMENT, MARIPOSA STREET TO CESAR CHAVEZ	9,166	5,561	61%	1,116	1,116	100%
WD-2811 - 8-INCH AND 16-INCH WATER MAIN REPLACEMENT, 17TH STREET FROM CLAYTON TO DOUGLASS	820	732	89%	310	310	100%
WD-2819 - AS-NEEDED WATER MAIN REPLACEMENT AT VARIOUS LOCATIONS – NO. 2	1,178	399	34%	148	148	100%
WD-2825R - ALAMEDA CREEK RECAPTURE	2,501	739	30%	16	16	100%
WD-2843 16-, 12- AND 8-INCH MAIN REPLACEMENT, DIAMOND STREET, 27 TH , DIAMOND HEIGHTS, 28 TH AND DUNCAN	46,874	23,213	50%	75	75	100%
WD-2845 - CATHODIC PROTECTION FOR TRANSMISSION PIPELINES AT VARIOUS LOCATIONS, PHASE 2	2,703	272	10%	0	0	--
WD-2847 - 8- AND 16-INCH MAIN REPLACEMENT, LAIDLEY FROM CASTRO TO HARPER, BEMIS, MIGUEL	36,566	23,870	65%	946	946	100%
WD-2852R - SAN FRANCISCO WESTSIDE RECYCLED WATER IRRIGATION SYSTEM RETROFITS	992	324	33%	0	0	--
WD-2860R2 - MASTER AS-NEEDED TREE SERVICES	3,200	146	5%	0	0	--
WD-2861 - AUXILIARY WATER SUPPLY SYSTEM CLARENDON SUPPLY 2019	4,352	2,288	53%	20	0	0%
WD-2868R - SAN FRANCISCO LOCAL WATER AS-NEEDED PAVING FY 21-24	59,502	28,263	47%	453	453	100%
WD-2871 - SUNOL VALLEY WATER TREATMENT PLANT, AQUA AMMONIA STRUCTURAL REPAIRS AND TANK REPLACEMENT	1,980	1,044	53%	182	18	10%
WD-2878A - REGIONAL GROUNDWATER STORAGE AND RECOVERY PHASE 2A	5,118	2,999	59%	144	96	67%
WD-2882 - TROUSDALE OAKS TREE REMOVAL PROJECT	140	27	19%	0	0	--
WD-2887 - HARRY TRACY WATER TREATMENT PLANT - FILTER NOS. 1 TO 6 UNDERDRAIN REPLACEMENT	22,255	13,151	59%	3,164	2,392	76%
WD-2889 - AS NEEDED WATER SERVICE LINE REPLACEMENTS	17,599	5,587	32%	300	300	100%
WD-2890R - BAY DIVISION PIPELINE NO. 3 AND 4 SLIP LINING AT LAFAYETTE STREET	5,378	2,924	54%	113	0	0%
WW-543 - SOUTHEAST WATER POLLUTION CONTROL PLANT HVAC AND MECHANICAL UPGRADES	1,830	384	21%	519	332	64%
WW-628 - SOUTHEAST WATER POLLUTION CONTROL PLANT NEW HEADWORKS FACILITY	673,597	213,128	32%	122,755	53,556	44%
WW-628.3-16 SOUTHEAST PLANT NEW HEADWORKS FACILITY PROJECT - DRILLED SHAFTS	11,885	4,512	38%	1,571	1,532	98%
WW-639 - OCEANSIDE WATER POLLUTION CONTROL PLANT DIGESTER GAS UTILIZATION UPGRADES	27,173	14,960	55%	2,171	2,087	96%
WW-645R - WESTSIDE PUMP STATION RELIABILITY IMPROVEMENTS	55,389	16,844	30%	13,256	8,989	68%
WW-647R - SOUTHEAST WATER POLLUTION CONTROL PLANT BIOSOLIDS DIGESTER FACILITIES PROJECT	960,890	316,680	33%	143,690	102,154	71%

LOCAL HIRING BY PROJECT

PUBLIC UTILITIES COMMISSION

WW-662R - SOUTHEAST WATER POLLUTION CONTROL PLANT POWER FEED AND PRIMARY SWITCHGEAR UPGRADES	7,945	1,426	18%	954	48	5%
WW-667 MARIPOSA DRY-WEATHER PUMP STATION	311	98	32%	50	50	100%
WW-669 - OCEANSIDE PLANT BUILDING 011 GRIT CLASSIFIER AND PRIMARY INFLUENT SLIDE GATE SYSTEM	2,017	1,065	53%	441	343	78%
WW-675 - 5TH/18TH/UPPER LARKIN STREETS SEWER INSPECTION	2,024	635	31%	96	96	100%
WW-682R - SOUTHEAST COMMUNITY CENTER AT 1550 EVANS	2,095	870	42%	288	188	65%
WW-684 - 45TH, 46TH, 47TH AVES, VICENTE, WAWONA STS AND SLOAT BLVD SEWER REPLACEMENT	24,587	19,342	79%	1,682	1,682	100%
WW-685R - NORTH SHORE PUMP STATION WET WEATHER IMPROVEMENTS	41,421	11,094	27%	7,559	5,914	78%
WW-697 - AS-NEEDED MAIN SEWER REPLACEMENT NO. 8	4,428	2,346	53%	208	208	100%
WW-699 - AS-NEEDED SPOT SEWER REPLACEMENT NO. 42	18,454	7,555	41%	3,778	2,379	63%
WW-704 - VARIOUS LOCATIONS SEWER REPLACEMENT NO. 9	23,404	13,042	56%	136	120	88%
WW-705 - VARIOUS LOCATIONS SEWER REPLACEMENT NO. 10	21,558	9,134	42%	1,696	194	11%
WW-707R - VARIOUS LOCATIONS SEWER REPLACEMENT NO. 11	18,057	12,222	68%	2,514	2,514	100%
WW-708 - VARIOUS LOCATIONS SEWER REPLACEMENT NO. 12	24,864	19,920	80%	2,020	1,940	96%
WW-709R - VARIOUS LOCATIONS SEWER REPLACEMENT NO. 13	13,614	4,512	33%	2,038	890	44%
WW-710R - AS-NEEDED SEWER CLEANING AND INSPECTION (FY22)	4,853	995	21%	69	64	93%
WW-711 - WAWONA AREA STORMWATER IMPROVEMENT AND VICENTE STREET WATER MAIN REPLACEMENT	28,221	20,331	72%	2,267	1,532	68%
WW-713 - AS-NEEDED MAIN SEWER REPLACEMENT NO. 9	10,586	4,113	39%	1,023	1,006	98%
WW-714 - OCEAN BEACH CLIMATE CHANGE ADAPTATION, SHORT-TERM EROSION MITIGATION	1,147	610	53%	0	0	--
WW-715 - AS-NEEDED SPOT SEWER REPLACEMENT NO. 43	80,438	27,419	34%	15,488	8,698	56%
WW-716 - AS NEEDED SPOT SEWER REPLACEMENT NO. 44	15,362	4,408	29%	2,548	1,378	54%
WW-718R - WASTEWATER ENTERPRISE ELEVATOR MAINTENANCE, REPAIR, AND MODERNIZATION 2021-2024	1,255	204	16%	125	0	0%
WW-719A - FOLSOM AREA STORMWATER IMPROVEMENTS - SOMA AND MISSION DISTRICTS SEWER REPLACEMENT	7,127	3,839	54%	260	74	28%
WW-723R - CHANNEL FORCE MAIN INTERTIE	5,796	1,804	31%	774	646	83%
WW-724 - PANHANDLE AND INNER SUNSET LARGE SEWER REHABILITATION	15,939	5,931	37%	449	176	39%
WW-731 - VARIOUS LOCATIONS BRICK SEWER IMPROVEMENTS	52,070	18,540	36%	3,634	2,785	77%
WW-733 - AS-NEEDED SEWER INSPECTION FY23	8,323	2,652	32%	1,938	691	36%
WW-735 - VARIOUS LOCATIONS MAIN SEWER INSPECTION NO. 1	3,906	1,366	35%	1,069	591	55%
WW-736 - CASTRO AND MISSION DISTRICTS SEWER IMPROVEMENTS	6,561	3,848	59%	243	243	100%
WW-737 - BAKER ST. COMBINED SEWER DISCHARGE BAFFLE IMPROVEMENTS & BACKFLOW VALVE REPAIR	1,363	931	68%	195	195	100%

LOCAL HIRING BY TRADE

PUBLIC UTILITIES COMMISSION

TRADE	TOTAL WORK HOURS			TOTAL APPRENTICE HOURS		
	TOTAL	LOCAL	LOCAL %	TOTAL	LOCAL	LOCAL %
ASBESTOS REMOVAL WORKER	1,187	421	35%	0	0	--
ASBESTOS WORKER, HEAT AND FROST INSULATOR	235	12	5%	70	0	0%
BOILERMAKER/BLACKSMITH	1,271	11	1%	164	0	0%
BRICKLAYER, BLOCKLAYER	737	0	0%	0	0	--
BRICKTENDER	328	0	0%	0	0	--
BUILDING/CONSTRUCTION INSPECTOR AND FIELD SOILS AND MATERIAL TESTER	2,969	1,612	54%	44	0	0%
CARPENTER AND RELATED TRADES	191,812	72,076	38%	31,411	21,239	68%
CARPET,LINOLEUM	510	342	67%	32	24	75%
CEMENT MASON	58,319	18,389	32%	5,490	3,262	59%
DRIVER	60,112	44,815	75%	0	0	--
DRYWALL INSTALLER/LATHER	763	256	34%	64	32	50%
ELECTICAL UTILITY LINEMAN	35,691	1,852	5%	5,192	0	0%
ELECTRICIAN	178,218	63,559	36%	35,188	21,387	61%
ELEVATOR CONSTRUCTOR	1,039	102	10%	193	0	0%
FIELD SURVEYOR	2,570	78	3%	503	8	2%
GLAZIER	1,086	108	10%	278	0	0%
IRON WORKER	70,665	18,315	26%	13,795	7,950	58%
LABORER AND RELATED CLASSIFICATIONS	548,417	258,586	47%	56,572	39,225	69%
MODULAR FURNITURE INSTALLER	4	0	0%	0	0	--
OPERATING ENGINEER	156,855	71,471	46%	6,733	5,225	78%
PAINTER	35,611	5,672	16%	7,066	1,974	28%
PARKING AND HIGHWAY IMPROVEMENT PAINTER	38	0	0%	4	0	0%
PILE DRIVER	3,702	420	11%	307	170	55%
PLUMBER	95,750	40,950	43%	26,467	18,553	70%
ROOFER	10,027	2,089	21%	2,484	749	30%
SHEET METAL WORKER	35,424	4,380	12%	13,217	3,017	23%
STATOR REWINDER	1,824	0	0%	0	0	--
STEEL ERECTOR AND FABRICATOR(OPERATING ENGINEER-HEAVY&HIGHWAY WORK)	10	0	0%	0	0	--
TEAMSTER	6,078	4,259	70%	0	0	--
TILE FINISHER	30	22	73%	0	0	--
TILE SETTER	25	17	69%	0	0	--
TRAFFIC CONTROL/LANE CLOSURE (LABORER)	7,942	3,942	50%	8	0	0%
TREE MAINTENANCE	2,825	1,219	43%	0	0	--
WATER WELL DRILLER	149	125	84%	0	0	--

LOCAL HIRING BY CONTRACTOR

PUBLIC UTILITIES COMMISSION

CONTRACTOR NAME	TOTAL WORK HOURS			TOTAL APPRENTICE HOURS		
	TOTAL	LOCAL	LOCAL %	TOTAL	LOCAL	LOCAL %
3H TRUCKING INC.	498	0	0%	0	0	--
5AB TRANS INC	197	197	100%	0	0	--
711 MATERIALS, INC.	122	89	73%	0	0	--
A. RUIZ CONSTRUCTION CO. & ASSOC., INC.	41,916	22,363	53%	88	88	100%
A. ZAHNER COMPANY	733	0	0%	0	0	--
ABC FREIGHTLINE INC	236	236	100%	0	0	--
ABM ELECTRICAL POWER SERVICES, LLC	157	0	0%	0	0	--
ACCELERATED CONSTRUCTION & METAL, LLC	24	24	100%	0	0	--
ACCO ENGINEERED SYSTEMS	110	44	40%	22	22	100%
ACE AUTOMATIC GARAGE DOORS INC	10	10	100%	0	0	--
ACE QUALITY CONTROL	49	0	0%	0	0	--
ADVANCED TRUCKING LLC	1,275	1,275	100%	0	0	--
AHLBORN FENCE & STEEL, INC.	30	0	0%	0	0	--
AHLBORN STRUCTURAL STEEL	573	17	3%	69	17	25%
ALDRIDGE ELECTRIC, INC	1,843	0	0%	0	0	--
ALLTECH ENGINEERING CORP	181	0	0%	0	0	--
ALTA ENGINEERING GROUP, INC.	18,191	4,645	26%	6,476	4,368	67%
AM BROS INC.	9	0	0%	0	0	--
AMERICAN CRANE RENTAL INC	134	98	73%	0	0	--
AMERICAN SHEET METAL PARTITION CO., INC	12	0	0%	4	0	0%
AMPJACK AMERICA LTD.	1,107	0	0%	96	0	0%
ANCO IRON & CONSTRUCTION INC.	3,818	1,669	44%	396	396	100%
ANDERSON COMMERCIAL FLOORING	272	104	38%	32	24	75%
ANVIL BUILDERS	24,190	7,535	31%	4,477	2,894	65%
ANVIL POWER INC.	9,892	4,885	49%	2,586	2,586	100%
APEX TESTING LABORATORIES, INC.	814	32	4%	20	0	0%
ARCHITECTURAL DESIGN & SIGNS	16	0	0%	0	0	--
AS GILL EXPRESS, INC.	133	133	100%	0	0	--
ASBESTOS MANAGEMENT GROUP OF CALIFORNIA, INC.	172	0	0%	82	0	0%
ASPHALT IMPRESSIONS	16	0	0%	0	0	--
BABAK TRUCKING, INC.	24	0	0%	0	0	--
BACON PLUMBING CO INC	543	282	52%	282	282	100%

LOCAL HIRING BY CONTRACTOR

PUBLIC UTILITIES COMMISSION

BADGER DAYLIGHTING CORP.	74	0	0%	0	0	--
BAILEY FENCE COMPANY, INC.	68	0	0%	0	0	--
BAINES-NIBBI JV	5,506	3,284	60%	725	717	99%
BAIRD TRUCKING, INC.	542	191	35%	0	0	--
BANNON CONSTRUCTION INC	954	613	64%	224	224	100%
BART-BEK PLUS 4 INC. DBA KCA ENGINEERS INC.	186	13	7%	0	0	--
BASS ELECTRIC	54	0	0%	0	0	--
BASSET ENGINEERING	14,708	9,328	63%	1,947	1,947	100%
BAUMAN LANDSCAPE AND CONSTRUCTION	197	34	17%	0	0	--
BAY AREA LIGHTWORKS, INC.	591	353	60%	0	0	--
BAY ENGINEERING, LLC	24,915	11,552	46%	7,967	6,054	76%
BAY LINE CUTTING & CORING, INC.	876	9	1%	0	0	--
BAY TECH ENGINEERING, INC.	812	472	58%	210	210	100%
BAY-TECH ELECTRIC INC.	681	267	39%	302	0	0%
BAYVIEW ENVIRONMENTAL SERVICES, INC.	431	345	80%	0	0	--
BECKER ELECTRIC INC.	9,079	1,297	14%	621	137	22%
BEI STEEL, INC.	6,032	1,993	33%	684	392	57%
BENCHMARK ENGINEERING, INC.	77	0	0%	21	0	0%
BERTCO, INC.	20,023	2,280	11%	0	0	--
BEST ROOFING & WATERPROOFING, INC.DBA BEST CONTRAC	7,540	179	2%	1,482	179	12%
BIG PIPE MECHANICAL	11,529	4,468	39%	343	237	69%
BIG VALLEY ELECTRIC	1,396	737	53%	464	320	69%
BIGGE CRANE & RIGGING	531	0	0%	8	0	0%
BIGGE CRANE AND RIGGING CO	7,440	1,301	17%	1,148	1,118	97%
BINDA TRUCKING	333	87	26%	0	0	--
BLAS TRUCKING	130	130	100%	0	0	--
BLOCKA CONSTRUCTION	1,764	765	43%	394	0	0%
BLUE DIAMOND FREIGHT INC.	19	19	100%	0	0	--
BM CARRIER INC.	9	9	100%	0	0	--
BOB HARKRADER & SONS TRUCKING, INC.	39,558	36,492	92%	0	0	--
BOGETTI WATER TRUCKS, INC.	47	47	100%	0	0	--
BRAND ENERGY SERVICES OF CALIFORNIA, INC.	1,586	0	0%	390	0	0%
BRANDSAFWAY SERVICES, LLC.- BENICIA, CA	37	24	65%	8	4	50%
BROADWAY MECHANICAL-CONTRACTORS, INC.	5,525	2,272	41%	1,360	1,017	75%

LOCAL HIRING BY CONTRACTOR

PUBLIC UTILITIES COMMISSION

BULLARD'S HEATING & AIR INC	8,707	1,717	20%	1,393	957	69%
C&N REINFORCING, INC.	114	0	0%	42	0	0%
CAL WEST CONCRETE CUTTING	352	62	17%	0	0	--
CALIFORNIA CONCRETE PUMPING INC. DBA ASSOCIATED CO	8	0	0%	0	0	--
CALIFORNIA MATERIALS, INC	38	38	100%	0	0	--
CAMAJANI TRUCKING	2,331	463	20%	0	0	--
CAMBLIN STEEL SERVICE INC.	249	0	0%	8	0	0%
CANEPA AND SONS, INC.	38	38	100%	0	0	--
CAPAX GROUP, INC.	2,188	1,331	61%	0	0	--
CAPITOL BUILDERS HARDWARE, INC.	66	20	30%	0	0	--
CAPITOL ELECTRIC	68	0	0%	0	0	--
CARTER AIR BALANCE CO	26	0	0%	13	0	0%
CELL-CRETE CORPORATION	73	0	0%	0	0	--
CELTIC SCAFFOLDING INC.	196	140	71%	42	0	0%
CEMEX CONSTRUCTION MATERIAL PACIFIC LLC	3,425	1,003	29%	0	0	--
CEMEX. INC.	167	50	30%	0	0	--
CENTRAL CONCRETE SUPPLY CO., INC.	1,650	66	4%	0	0	--
CERTIFIED COATINGS COMPANY	759	29	4%	327	8	2%
CF&T CONCRETE PUMPING	6	0	0%	0	0	--
CHAMPION INDUSTRIAL CONTRACTORS INC.	123	123	100%	0	0	--
CHRISTIAN BROTHERS LINING, CO.	60	0	0%	0	0	--
CIA TRUCKING INC	18	0	0%	0	0	--
CIW AND SONS PLUMBING	592	500	84%	80	80	100%
CLAIR CARRIER INC	192	192	100%	0	0	--
CLEAR CREEK SYSTEMS, INC	167	0	0%	0	0	--
CMC REBAR	35	35	100%	0	0	--
CMC STEEL FABRICATORS INC DBA CMC REBAR	6,283	2,686	43%	1,254	965	77%
CMC TRAFFIC CONTROL SPECIALISTS DBA CMC CONSTRUCTION	3,252	1,679	52%	51	27	53%
COBRA TRUCKING, INC.	511	161	32%	0	0	--
COLE SPECIALTY COMPANY	126	126	100%	0	0	--
COMPASS ENGINEERING CONTRACTORS, INC.	22	0	0%	4	0	0%
CON J. FRANKE ELECTRIC, INC.	1,434	386	27%	287	82	29%
CONDON-JOHNSON & ASSOCIATES INC	760	63	8%	0	0	--
CONDOR EARTH TECHNOLOGIES, INC.	49	49	100%	0	0	--

LOCAL HIRING BY CONTRACTOR

PUBLIC UTILITIES COMMISSION

CONFLO SERVICES, INC.	644	220	34%	0	0	--
CONSTRUCTION TESTING SERVICES, INC.	146	135	92%	0	0	--
COSCO FIRE PROTECTION, INC.	2,633	2,117	80%	819	663	81%
CRANA TRUCKING, LLC	717	695	97%	0	0	--
CRATUS INC.	26,150	12,439	48%	3,046	2,606	86%
CRITCHFIELD MECHANICAL, INC. (CMI)	532	28	5%	28	28	100%
CRUX SUBSURFACE	1,162	0	0%	0	0	--
CUPERTINO ELECTRIC INC.	111,529	33,614	30%	21,410	9,526	44%
D2 INDUSTRIAL SERVICES	550	0	0%	134	0	0%
DANCO WATERPROOFING CORP	7	0	0%	0	0	--
DANNY'S CONSTRUCTION COMPANY, LLC	4,266	1,637	38%	637	419	66%
D'ARCY & HARTY CONSTRUCTION, INC	7,189	3,442	48%	555	419	75%
DC DRYWALL	122	122	100%	0	0	--
DE HARO RAMIREZ GROUP	962	168	17%	74	70	95%
DEANS CERTIFIED WELDING	489	0	0%	0	0	--
DEL MONTE ELECTRIC CO INC	302	291	96%	59	59	100%
DELTA GRINDING CO., INC. DBA DIABLO GRINDING INC.	16	0	0%	0	0	--
DIAMOND FENCE COMPANY, INC	109	0	0%	0	0	--
DIGITAL CONCRETE SCANNING SERVICES	20	0	0%	0	0	--
DN TANKS, INC.	78,010	32,563	42%	8,662	6,215	72%
DON LAWLEY COMPANY, INC.	125	76	61%	0	0	--
DOWDLE & SONS MECHANICAL INC	227	77	34%	34	0	0%
DREAMZ LOGISTIC INC.	74	0	0%	0	0	--
DRILL TECH DRILLING & SHORING, INC	1,373	6	0%	0	0	--
DS TRANS LLC	214	214	100%	0	0	--
E. MITCHELL, INC.	879	0	0%	0	0	--
EDWARD W SCOTT ELECTRIC CO INC	725	37	5%	30	30	100%
EGGLI LANDSCAPE CONTRACTORS, INC.	374	299	80%	24	24	100%
ELECTRIC POWER SYSTEMS	756	0	0%	0	0	--
ESQUIVEL GRADING & PAVING, INC.	1,030	294	29%	45	45	100%
EXARO TECHNOLOGIES CORPORATION	1,352	136	10%	0	0	--
F.D. THOMAS, INC.	22,213	1,083	5%	3,430	64	2%

LOCAL HIRING BY CONTRACTOR

PUBLIC UTILITIES COMMISSION

F3 & ASSOCIATES INC.	389	0	0%	34	0	0%
FARWEST INSULATION CONTRACTING	203	0	0%	54	0	0%
FIX'S WELDING & FABRICATION	69	0	0%	0	0	--
FONTENOY ENGINEERING, INC.	12,078	6,174	51%	1,150	1,150	100%
FUSION SIGN AND DESIGN	5	4	70%	0	0	--
GAMBREL COMPANIES DBA GOLD & SONS READY MIX	30	0	0%	0	0	--
GCU TRUCKING	53	53	100%	0	0	--
GECMS INC	234	175	75%	0	0	--
GOLD & SONS, INC. DBA GOLD & SONS TRUCKING	190	0	0%	0	0	--
GOLDEN TRUCKING, LLC.	219	0	0%	0	0	--
GONSALVES & SANTUCCI, INC. DBA CONCO	40	0	0%	24	0	0%
GROUND CONTROL, INC.	4,051	727	18%	69	69	100%
GROUND FORCE ENTERPRISES	4	0	0%	0	0	--
GSN TRANS INC	95	95	100%	0	0	--
GSW CONSTRUCTION, INC.	6,145	2,168	35%	429	208	48%
H & R PLUMBING AND DRAIN CLEANING, INC.	576	32	6%	32	32	100%
HANFORD ARC	3,811	0	0%	0	0	--
HARJAS TRUCKING LLC	13	13	100%	0	0	--
HARMON TRUCKING LLC	12	12	100%	0	0	--
HARRIS BACKHOE & DUMP TRUCK SERVICE, INC.	70	0	0%	0	0	--
HARRIS BAY AREA LLC	628	87	14%	7	0	0%
HARRIS HOISTING	10,020	28	0%	0	0	--
HATTON CRANE & RIGGING, INC	244	39	16%	0	0	--
HOMELAND EXPRESS INC	91	91	100%	0	0	--
HOSELEY CORPORATION	7,336	4,402	60%	1,000	794	79%
HOT LINE CONSTRUCTION, INC.	567	0	0%	110	0	0%
HS ROADLINES INC	9	9	100%	0	0	--
HVYW8 TRUCKING	5,075	1,130	22%	0	0	--
INSITUFORM TECHNOLOGIES, LLC	36	0	0%	0	0	--
INSTALLIT, INC.	58	21	36%	0	0	--
INTEGRATED SIGN INSTALLATIONS INC	168	35	21%	11	0	0%
INTELLIGENT TECHNOLOGIES AND SERVICES, INC.	21	0	0%	0	0	--

LOCAL HIRING BY CONTRACTOR

PUBLIC UTILITIES COMMISSION

INTERSTATE CONCRETE PUMPING	753	58	8%	0	0	--
IRELAND INTERIOR SYSTEMS, INC.	54	0	0%	0	0	--
J HART PLUMBING INC.	60	60	100%	24	24	100%
J&C TRUCKING	8	8	100%	0	0	--
J. FLORES CONSTRUCTION COMPANY, INC.	56,081	19,397	35%	10,862	6,183	57%
J.F. BRENNAN CO, INC.	1,217	0	0%	0	0	--
JDB & SONS CONSTRUCTION INC.	11,427	6,702	59%	131	131	100%
JEFFCO PAINTING & COATING, INC.	825	74	9%	166	16	10%
JMB CONSTRUCTION INC	13,836	6,127	44%	650	650	100%
JMG TRANS INC	144	144	100%	0	0	--
JOE COVER AND SONS, INC.	1,296	1,296	100%	0	0	--
JOSEPH J ALBANESE INC	1,412	0	0%	0	0	--
JOT BROS TRUCKING INC	169	169	100%	0	0	--
JTK ELECTRIC, INC DBA SUNFLOWER ELECTRIC	1,590	0	0%	0	0	--
K.J. WOODS CONSTRUCTION, INC.	9,202	9,155	99%	654	654	100%
KHS&S CONTRACTORS	4	0	0%	0	0	--
KONE INC	345	0	0%	121	0	0%
KOROTKIN ASSOCIATES.COM	312	208	67%	0	0	--
L C GENERAL ENGINEERING & CONSTRUCTION, INC.	274	274	100%	26	26	100%
LANGLEY TRUCKING	13	13	100%	0	0	--
LARRATT BROS. PLUMBING, INC.	7,860	3,625	46%	3,449	1,807	52%
LEFEVRE WELDING	880	11	1%	0	0	--
LEFEVRE WELDING, INC	528	0	0%	0	0	--
LIFFEY ELECTRIC	475	447	94%	0	0	--
LINCOLN GLASS & MIRROR	620	0	0%	203	0	0%
LOMBARDO DIAMOND CORE DRILLING CO., INC.	246	0	0%	4	0	0%
LOU'S CONCRETE SAWING-BREAKING	217	0	0%	0	0	--
LUCKY DOG CONSTRUCTION, INC.	108	0	0%	72	0	0%
M SQUARED CONSTRUCTION INC	22,852	11,376	50%	0	0	--
M. HERNANDEZ CONSTRUCTION, INC.	9,063	3,528	39%	1,839	1,005	55%
MALCOLM DRILLING COMPANY, INC.	16,614	3,572	21%	1,615	1,295	80%
MALCOLM INTERNATIONAL LLC	282	0	0%	113	0	0%

LOCAL HIRING BY CONTRACTOR

PUBLIC UTILITIES COMMISSION

MALWA CARRIER INC	354	354	100%	0	0	--
MANSFIELD & MANSFIELD CONSTRUCTION CLEAN-UP CO. SITE SUPPORT	4,671	2,825	60%	0	0	--
MARINA LANDSCAPE, INC.	71	0	0%	8	0	0%
MC METAL INC	943	943	100%	0	0	--
MCGOLDRICK ENTERPRISES, INC. DBA MTB	18	0	0%	7	0	0%
MCMILLAN DATA COMMUNICATIONS, INC.	38	0	0%	0	0	--
MICHAEL O'SHAUGHNESSY CONSTRUCTION, INC.	8,915	3,660	41%	913	376	41%
MIKE O'DELL SURVEYS	1,399	65	5%	449	8	2%
MINERVA CONSTRUCTION	574	305	53%	0	0	--
MISSION CITY REBAR, INC.	791	401	51%	262	151	58%
MISSION CITY REBAR, INCORPORATED	327	242	74%	116	77	66%
MITCHELL ENGINEERING	19,781	12,137	61%	990	170	17%
MONTEREY MECHANICAL CO	41,796	15,698	38%	12,053	8,066	67%
MORROW EQUIPMENT COMPANY	141	0	0%	0	0	--
MOUNTAIN CASCADE INC	2,990	1,466	49%	623	291	47%
MOUNTAIN METHODS, INC.	14,915	11,864	80%	2,683	1,001	37%
MURPHY INDUSTRIAL COATINGS, INC.	1,741	713	41%	310	159	51%
NATIONAL COATING & LINING CO.	688	0	0%	172	0	0%
NINYO & MOORE	1,362	1,362	100%	0	0	--
NJIRICH & SONS, INC NEW	766	766	100%	0	0	--
NMI INDUSTRIAL HOLDINGS, INC.	2,440	0	0%	0	0	--
NOR CAL PIPELINE SERVICES	3,589	163	5%	407	0	0%
NORTHERN STRUCTURAL INC.	8	0	0%	0	0	--
ON THE LEVEL CONCRETE	292	76	26%	0	0	--
OTIS ELEVATOR COMPANY- SAN FRANCISCO	66	0	0%	10	0	0%
PACIFIC ENGINEERING AND CONSTRUCTION, INC.	205	127	62%	16	16	100%
PACIFIC POWER TESTING	22	0	0%	0	0	--
PACIFIC STEEL GROUP (PSG)	3,324	283	9%	596	0	0%
PACIFIC VALLEY ROOFING	185	154	83%	31	31	100%
PANELIZED STRUCTURES, INC	616	280	45%	0	0	--
PARC ENVIRONMENTAL	457	0	0%	0	0	--
PCL CONSTRUCTION, INC.	2,782	1,766	63%	978	705	72%

LOCAL HIRING BY CONTRACTOR

PUBLIC UTILITIES COMMISSION

PEACOCK INTERIORS & GALLERY, INC.	238	238	100%	0	0	--
PENINSULATORS, INC.	4	0	0%	0	0	--
PHILIP BETTNEY TRUCKING, INC.	630	630	100%	0	0	--
PIONEER CONTRACTORS, INC.	28	0	0%	14	0	0%
PIPE AND PLANT SOLUTIONS, INC.	7,116	1,426	20%	826	221	27%
PIPE JACKING TRENCHLESS, INC	8	0	0%	0	0	--
PITCHER SERVICES, LLC	78	0	0%	0	0	--
POINT ONE ELECTRICAL SYSTEMS, INC.	350	32	9%	24	24	100%
POWER CONSTRUCTION, INC.	6,637	2,234	34%	1,180	740	63%
POWER ENGINEERING CONTRACTORS, INC	1,150	913	79%	81	0	0%
PRECISION ENGINEERING, INC.	24,285	20,622	85%	1,808	1,784	99%
PRESIDIO BUILDERS	358	0	0%	0	0	--
PULLMAN SST, INC.	2,464	429	17%	63	0	0%
PUMP REPAIR SERVICE CO	1,038	788	76%	72	72	100%
R & A ONE TRUCKING INC.	9	9	100%	0	0	--
R & M PAINTING, INC. DBA GOLDSTAR PAINTING	80	80	100%	0	0	--
R & W CONCRETE	25	0	0%	0	0	--
R&I GLASSWORKS	152	0	0%	0	0	--
R&S CONSTRUCTION MANAGEMENT INC.	13,542	9,362	69%	100	100	100%
RADIUS EARTHWORK INC	157	157	100%	0	0	--
RAILPROS FIELD SERVICES, INC.	114	0	0%	0	0	--
RANGER PIPELINES, INC	8,652	3,568	41%	801	793	99%
RED DIPPER INC.	4,488	2,410	54%	1,930	1,551	80%
RED DIPPER, INC.	1,479	995	67%	622	561	90%
REDWOOD PAINTING CO., INC	2,031	248	12%	809	248	31%
RES ENGINEERS	52	16	31%	24	0	0%
REVA MURPHY ASSOCIATES, INC.	100	33	33%	33	33	100%
RK ENGINEERING INC	8,512	2,608	31%	558	558	100%
ROADRUNNER DRILLING & PUMP CO.	439	0	0%	0	0	--
ROADWAY CONSTRUCTION INC	5,080	506	10%	171	162	95%
RONALD R NELSON CONTRACTOR INC.	2,004	1,773	88%	667	667	100%
RONAN CONSTRUCTION, INC.	1,197	1,141	95%	114	114	100%

LOCAL HIRING BY CONTRACTOR

PUBLIC UTILITIES COMMISSION

ROSENDIN ELECTRIC, INC.	6	6	100%	0	0	--
RUBECON GENERAL CONTRACTING, INC.	5,237	5,237	100%	1,081	1,081	100%
RUSSELL HINTON COMPANY	32	0	0%	0	0	--
S.J. AMOROSO CONSTRUCTION CO., INC	2,528	449	18%	0	0	--
SAK CONSTRUCTION LLC	7,347	339	5%	247	247	100%
SAN FRANCISCO CONCRETE SCANNING & CORING	1,367	175	13%	0	0	--
SAN FRANCISCO POWER	986	904	92%	0	0	--
SAN FRANCISCO ROOFING SERVICES, INC.	1,585	1,162	73%	796	507	64%
SARAI TRUCKING INC	171	171	100%	0	0	--
SCAFFOLD SOLUTIONS, INC.	759	183	24%	109	36	33%
SDV SERVICES INC	84	0	0%	8	0	0%
SHEEDY DRAYAGE CO	1,070	133	12%	63	63	100%
SHEERAN PIPELINE, INC.	2,774	813	29%	188	0	0%
SIERRA MOUNTAIN CONSTRUCTION, INC.	70,242	52,203	74%	9,123	6,367	70%
SILICON VALLEY CRANE DBA KING CRANE SERVICE	69	19	28%	0	0	--
SILICON VALLEY GLASS INC	157	108	68%	0	0	--
SINCLAIR GENERAL ENGINEERING CONSTRUCTION, INC.	10,921	9,069	83%	1,743	1,213	70%
SKYLINE SCAFFOLD, INC.	6,638	1,196	18%	1,935	1,075	56%
SLATER CUSTOM PAINTING	197	32	16%	0	0	--
SMITH & SONS ELECTRIC, INC.	54	4	7%	0	0	--
SOUTHEAST ELECTRICAL CONTRACTOR, INC	297	0	0%	0	0	--
SOUTHLAND IND	26,851	3,552	13%	11,988	2,271	19%
SPECIALTY TECHNICAL SERVICES LLC	1,824	0	0%	0	0	--
SPENCER MASONRY	687	0	0%	0	0	--
SPRIG ELECTRIC.	29,701	11,886	40%	7,019	6,302	90%
SRR TRANSPORT INC.	218	0	0%	0	0	--
SS GILL TRUCKING INC	73	73	100%	0	0	--
STAR ELEVATOR, INC.	627	102	16%	63	0	0%
STREAMLINE DRYWALL INC.	80	80	100%	32	32	100%
SULLIVAN'S CONCRETE SAWING	100	0	0%	0	0	--
SUMMIT PIPELINES	340	0	0%	0	0	--
SURBER DRYWALL CONSTRUCTION, INC.	242	0	0%	32	0	0%
TAP MASTER, INC	11	0	0%	0	0	--
TEAM EES INC	344	292	85%	0	0	--

LOCAL HIRING BY CONTRACTOR

PUBLIC UTILITIES COMMISSION

TEAM NORTH CONSTRUCTION SERVICES INC.	118	118	100%	0	0	--
TEMPER INSULATION CO.,INC.	48	12	25%	16	0	0%
THE PROFESSIONAL TREE CARE COMPANY	1,227	73	6%	0	0	--
THOMAS DECOSTE DBA THOMAS JS WELDING	137	53	38%	0	0	--
TITAN CRANE & RIGGING, INC.	1,156	967	84%	410	410	100%
TOM MAYO CONSTRUCTION INC	1,429	886	62%	0	0	--
TOP QUALITY INSULATION & FIREPLACES	21	0	0%	0	0	--
TOTAL TRAFFIC CONTROL, INC.	6,483	2,966	46%	139	62	45%
TRANSPACIFIC STEEL,LLC	22,385	2,055	9%	2,665	194	7%
TRINET CONSTRUCTION INC	2,079	1,545	74%	244	244	100%
U. S. ELECTRIC TECHNOLOGIES, INC.	7,368	4,458	61%	0	0	--
U.S. PERMA, INC. DBA CALIFORNIA TILE INSTALLERS	55	39	71%	0	0	--
UNION ROLLING DOOR COMPANY	158	0	0%	75	0	0%
VALDEZ PAINTING	20	20	100%	0	0	--
VALUE FIRE PROTECTION, INC.	3,010	1,456	48%	761	761	100%
VEC	542	0	0%	0	0	--
VICTORY WOODWORKS, INC.	14	0	0%	0	0	--
VIP POWERLINE CORP.	8,855	0	0%	2,008	0	0%
W.C. MALONEY, LLC	2,851	0	0%	367	0	0%
WALSH CONSTRUCTION COMPANY II LLC	31,171	8,583	28%	5,277	3,515	67%
WATERTIGHT RESTORATION INC	2,013	1,740	86%	249	0	0%
WEBCOR CONCRETE, A DIVISION OF WEBCOR CRAFT, L.P.	127,907	44,882	35%	17,482	13,696	78%
WEST COAST ENERGY SYSTEMS, LLC	9	0	0%	0	0	--
WEST COAST HYDROVAC, INC.	292	0	0%	0	0	--
WESTERN ENGINEERING SUPPLY CO. INC	331	0	0%	0	0	--
WESTERN ERECTORS INC.	160	0	0%	0	0	--
WESTERN WATER CONSTRUCTORS, INC.	26,545	1,938	7%	3,672	1,938	53%
WESTERN WATER FEATURES, INC	13	0	0%	6	0	0%
WILSON UTILITY CONSTRUCTION CO	23,798	1,987	8%	2,978	0	0%
YADEJS, INC.	6,760	6,760	100%	0	0	--
YERBA BUENA ENGINEERING & CONSTRUCTION, INC.	2,314	1,650	71%	338	338	100%
YOLANDA'S CONSTRUCTION MANAGEMENT AND TRAFFIC CONTROL	1,230	1,230	100%	0	0	--



PUBLIC WORKS

Public Works touches every neighborhood in San Francisco. The staff designs and manages construction of civic buildings and streets, cleans and greens the right of way, maintains civic buildings; trains people for jobs, keeps the right of way free of hazards, paves the streets, repairs bridges and public stairways, expands accessibility and works at the forefront addressing some of San Francisco's biggest challenges, including homelessness.

LOCAL HIRING BY PROJECT

PUBLIC WORKS

PROJECT NAME	TOTAL WORK HOURS			TOTAL APPRENTICE HOURS		
	TOTAL	LOCAL	LOCAL %	TOTAL	LOCAL	LOCAL %
1000005844(R) G04 AS-NEEDED PAVEMENT RENOVATION AND SEWER REPLACEMENT NO. 13 (REBID)	141	33	23%	0	0	--
1000007415 LOMBARD STREET VISION ZERO	178	110	62%	0	0	--
1000007916[R] HARRISON STREET INFRASTRUCTURE IMPROVEMENTS (REBID)	15,574	8,928	57%	1,292	692	54%
1000009258 MATERIALS TESTING AND SPECIAL INSPECTION SERVICES, 2016 PUBLIC HEALTH AND SAFETY BOND PROGRAM	516	0	0%	248	0	0%
1000009366 AS-NEEDED SURVEYING SERVICES NO. 4 - LEE	587	290	49%	0	0	--
1000009583 GENERAL AS-NEEDED CONTRACT G09 TREE SERVICES	15,458	5,166	33%	0	0	--
1000010053 - GENERAL AS-NEEDED CONTRACT G10 PALM TREE REPLACEMENT	4	0	0%	0	0	--
1000011499 GENERAL AS-NEEDED CONTRACT G11 TREE SERVICES	17,935	9,396	52%	0	0	--
1000011501 GAN G13 SIDEWALK INSPECTION AND REPAIR PROGRAM	4,890	3,061	63%	0	0	--
1000011945 JOHN YEHALL CHIN SCHOOL SAFE ROUTES TO SCHOOL	250	166	66%	0	0	--
1000011946 PEDESTRIAN SAFETY IMPROVEMENTS VARIOUS LOCATIONS	7,298	4,686	64%	662	654	99%
1000012290 CASTRO MISSION HEALTH CENTER RENOVATIONS	402	16	4%	0	0	--
1000012552 VARIOUS LOCATIONS PAVEMENT RENOVATION NO. 38 AND SEWER REPLACEMENT	2,478	1,590	64%	53	53	100%
1000012553 BETTER MARKET STREET PHASE 1	61,697	31,075	50%	4,741	3,288	69%
1000012554 - MASTER AS-NEEDED AGREEMENT M14 - CURB RAMP CONSTRUCTION	5,700	4,614	81%	198	0	0%
1000012784 TRANSBAY FOLSOM STREETScape IMPROVEMENTS (REBID)	230	0	0%	0	0	--
1000013710 SOUTHEAST HEALTH CENTER EXPANSION & BEHAVIORAL HEALTH INTEGRATION PROJECT PHASE 2	365	0	0%	38	0	0%
1000014785 - GENERAL AS-NEEDED G17 PAVEMENT PRESERVATION 4	1,297	0	0%	0	0	--
1000015022 PW 41ST AND 44TH AVENUES INFRASTRUCTURE IMPROVEMENTS	304	218	72%	0	0	--
1000015023 6TH STREET PEDESTRIAN SAFETY PROJECT (REBID)	26,106	10,537	40%	4,645	4,286	92%
1000015026 SAN FRANCISCO COUNTY JAIL #2 KITCHEN RENOVATION	40	0	0%	0	0	--
1000015027 VARIOUS LOCATIONS PAVEMENT RENOVATION AND SEWER REPLACEMENT NO. 51	55	39	71%	0	0	--
1000015268 ZSFG CM/GC BUILDING 5	154,651	38,903	25%	11,271	7,106	63%
1000015270 HUNTERS POINT SHIPYARD BUILDING 101 UPGRADES	38	18	47%	18	18	100%
1000015748 VARIOUS LOCATIONS PAVEMENT RENOVATION NO. 48 AND SEWER REPLACEMENT	12,536	3,106	25%	1,080	827	77%
1000015749 PW VARIOUS LOCATIONS NO.49 PAVEMENT RENOVATION	898	0	0%	0	0	--
1000015750 VARIOUS LOCATIONS NO. 50 INFRASTRUCTURE IMPROVEMENTS	4,723	2,471	52%	304	152	50%
1000015751 SAFER TAYLOR STREET	16,701	8,973	54%	3,261	3,013	92%
1000015859 VARIOUS LOCATIONS PAVEMENT RENOVATION NO.45 & SEWER REPLACEMENT	11,883	5,224	44%	1,136	1,086	96%

LOCAL HIRING BY PROJECT

PUBLIC WORKS

1000016595 GOLDEN GATE AVENUE AND LAGUNA STREET PAVEMENT RENOVATION & SEWER REPLACEMENT	38,518	23,885	62%	2,587	2,587	100%
1000016818 GENEVA AVENUE TRAFFIC SIGNALS	671	430	64%	45	29	64%
1000016820 VARIOUS LOCATIONS PAVEMENT RENOVATION NO.53 AND SEWER REPLACEMENT	33,035	23,628	72%	632	0	0%
1000016821[R] - AS-NEEDED PAVEMENT PRESERVATION CONTRACT 4B (GENERAL AS-NEEDED CONTRACT G18)	9,528	1,152	12%	0	0	--
1000017005 FULTON STREET AND GROVE STREET PAVEMENT RENOVATION AND SEWER REPLACEMENT	1,005	757	75%	66	66	100%
1000017138 PAGE STREET NEIGHBORWAY	5,474	2,806	51%	186	186	100%
1000017336 UPPER MARKET CORRIDOR SAFETY IMPROVEMENTS	6,776	3,284	48%	1,197	1,197	100%
1000017355 PW VARIOUS LOCATIONS PAVEMENT RENOVATION NO.56 & SEWER REPLACEMENT	69,014	62,997	91%	6,657	6,639	100%
1000017356 RICHMOND RESIDENTIAL STREETS PAVEMENT RENOVATION & SEWER REPLACEMENT	26,911	18,630	69%	694	694	100%
1000023080 - TRANSIT AS-NEEDED CONTRACT NO. 2 (GENERAL AS-NEEDED (GAN) CONTRACT G20)	3,675	2,092	57%	687	410	60%
1000023080 PW TRANSIT AS-NEEDED CONTRACT NO. 2	781	528	68%	184	184	100%
1000023090 ALEMANY INTERCHANGE IMPROVEMENTS PHASE 2	11,209	3,408	30%	1,578	516	33%
1000023937 VARIOUS LOCATIONS PAVEMENT RENOVATION NO. 52 AND SEWER REPLACEMENT	7,568	5,906	78%	729	729	100%
1000024333 VARIOUS LOCATIONS PAVEMENT RENOVATION NO. 54 & SEWER REPLACEMENT	47,636	28,677	60%	2,815	2,718	97%
1000024456 ZSFG BUILDING 5 REHABILITATION DEPARTMENT RELOCATION PHASE 3	10,339	8,461	82%	480	480	100%
1000024719 VARIOUS LOCATIONS PAVEMENT RENOVATION NO. 57 & SEWER REPLACEMENT	49,704	37,532	76%	4,367	4,303	99%
1000024775 27 BRYANT TRANSIT RELIABILITY PROJECT (MUNI FORWARD)	3,815	2,087	55%	186	186	100%
1000025088 VARIOUS LOCATIONS PAVEMENT RENOVATION NO. 55 & SEWER REPLACEMENT	41,856	17,176	41%	5,221	4,794	92%
1000025212 DESIGN-BUILD FOR INSTALLATION OF DPH AUTOMATED DISPENSING CABINETS	1,952	1,952	100%	240	240	100%
1000025257 PW CONTRACT NO. 65 NEW TRAFFIC SIGNALS REBID	29,229	12,920	44%	2,249	2,249	100%
1000025503 PW MISSION ST AND GENEVA AVE INFRASTRUCTURE IMPROVEMENTS	39,676	18,183	46%	707	707	100%
1000025772 POTRERO GATEWAY STREETScape IMPROVEMENTS	7,061	2,863	41%	648	472	73%
1000026465 CANDLESTICK POINT VEHICLE TRIAGE CENTER PHASE 2	2,358	992	42%	169	55	33%
1000026473 CITY HALL MECHANICAL REPLACEMENT PROJECT PHASE 2	17,106	2,533	15%	714	0	0%
1000026515 JUNIPERO SERRA BOULEVARD PAVEMENT RENOVATION & SEWER REPLACEMENT	31,126	14,691	47%	2,125	2,077	98%
1000026715 SAN FRANCISCO PUBLIC LIBRARY 750 BRANNAN - COLLECTIONS	8,103	1,246	15%	1,354	324	24%
1000026753 ONE SOUTH VAN NESS 2ND FLOOR RESTROOM RENOVATION	6,948	3,902	56%	120	120	100%
1000027046 LAGUNA HONDA HOSPITAL AND REHAB CENTER ADMINISTRATIVE BUILDING M&O WINGS RENOVATION	63,480	4,833	8%	1,211	584	48%
1000027188 911 CALL CENTER RENOVATION - ESER BOND 2020	17,806	2,287	13%	2,720	920	34%
1000027204 SAN FRANCISCO CITY HALL ELEVATOR MODERNIZATION	168	32	19%	36	0	0%
1000027351 WESTERN ADDITION AREA TRAFFIC SIGNAL UPGRADES PHASE 1	5,593	3,988	71%	805	637	79%

LOCAL HIRING BY PROJECT

PUBLIC WORKS

1000027820 MISSION BRANCH LIBRARY RENOVATION	8,286	368	4%	182	30	16%
1000027999 CLAREMONT, JUANITA, AND YERBA BUENA PAVEMENT RENOVATION & SEWER REPLACEMENT	7,985	6,266	78%	1,173	1,173	100%
1000028073 CASTRO STATION ELEVATOR	4,270	879	21%	308	0	0%
1000028200 VARIOUS LOCATIONS PAVEMENT RENOVATION NO.59 & SEWER REPLACEMENT	4,933	3,105	63%	435	435	100%
1000028742 GENERAL AS-NEEDED CONTRACT G24 CONCRETE SLICING	12,798	8,099	63%	0	0	--
1000029010 - GENERAL AS-NEEDED CITYWIDE PAVEMENT PRESERVATION CONTRACT 5	2,717	0	0%	0	0	--
1000030107 TREE PLANTING WORKFORCE DEVELOPMENT GRANT	17,632	11,214	64%	0	0	--
1000030694 SAN FRANCISCO RENT BOARD TENANT IMPROVEMENT	780	14	2%	0	0	--
JOB ORDER CONTRACT J36 ELECTRICAL SERVICES [INDUSTRIAL]	28	14	50%	0	0	--
JOB ORDER CONTRACT J39 GENERAL BUILDING SERVICES [OSHPD]	3,868	582	15%	964	84	9%
JOB ORDER CONTRACT J43 GENERAL ENGINEERING SERVICES	687	281	41%	0	0	--
JOB ORDER CONTRACT J44 GENERAL BUILDING SERVICES	16,799	3,744	22%	5,589	1,418	25%
JOB ORDER CONTRACT J47 GENERAL ENGINEERING SERVICES	2,589	1,805	70%	458	156	34%
JOB ORDER CONTRACT J49 GENERAL ENGINEERING SERVICES	18,759	6,985	37%	645	597	93%
JOB ORDER CONTRACT J50 GENERAL BUILDING SERVICES	2,147	1,050	49%	16	16	100%
JOB ORDER CONTRACT J51 GENERAL BUILDING SERVICES	126	46	37%	0	0	--
JOB ORDER CONTRACT J52 GENERAL ENGINEERING SERVICES	10,052	6,533	65%	461	397	86%
JOB ORDER CONTRACT J53 GENERAL ENGINEERING SERVICES	6,376	3,773	59%	549	549	100%
JOB ORDER CONTRACT J59 GENERAL ENGINEERING SERVICES	2,326	864	37%	302	270	89%
JOB ORDER CONTRACT J60 GENERAL ENGINEERING SERVICES	132	58	44%	0	0	--

LOCAL HIRING BY TRADE

PUBLIC WORKS

TRADE	TOTAL WORK HOURS			TOTAL APPRENTICE HOURS		
	TOTAL	LOCAL	LOCAL %	TOTAL	LOCAL	LOCAL %
ASBESTOS REMOVAL WORKER	35,619	4,810	14%	0	0	--
ASBESTOS WORKER, HEAT AND FROST INSULATOR	264	40	15%	48	8	17%
BRICKLAYER, BLOCKLAYER	1,446	0	0%	32	0	0%
BUILDING/CONSTRUCTION INSPECTOR AND FIELD SOILS AND MATERIAL TESTER	1,160	14	1%	132	0	0%
CARPENTER AND RELATED TRADES	27,946	12,051	43%	4,104	2,872	70%
CARPET,LINOLEUM	1,059	448	42%	92	0	0%
CEMENT MASON	29,124	13,364	46%	5,824	5,562	96%
DRIVER	10,899	3,481	32%	0	0	--
DRYWALL INSTALLER/LATHER	16,978	4,131	24%	3,412	1,335	39%
ELECTICAL UTILITY LINEMAN	24	0	0%	0	0	--
ELECTRICIAN	28,109	10,758	38%	4,072	2,589	64%
FIELD SURVEYOR	321	145	45%	0	0	--
GLAZIER	1,419	185	13%	368	87	24%
IRON WORKER	2,669	873	33%	81	42	52%
LABORER AND RELATED CLASSIFICATIONS	263,107	145,262	55%	17,399	14,416	83%
MARBLE MASON	7	0	0%	0	0	--
MODULAR FURNITURE INSTALLER	1,473	308	21%	0	0	--
OPERATING ENGINEER	62,240	40,812	66%	2,328	2,242	96%
PAINTER	3,293	733	22%	209	145	69%
PARKING AND HIGHWAY IMPROVEMENT PAINTER	451	0	0%	11	0	0%
PILE DRIVER	41	41	100%	41	41	100%
PLASTERER	36	20	56%	8	0	0%
PLUMBER	12,717	3,277	26%	1,831	832	45%
ROOFER	948	287	30%	56	8	14%
SHEET METAL WORKER	7,673	985	13%	549	21	4%
SLURRY SEAL WORKER	6,724	576	9%	0	0	--
TEAMSTER	3,300	850	26%	0	0	--
TELECOMMUNICATIONS TECHNICIAN	128	16	13%	0	0	--
TERRAZZO WORKER	193	20	10%	122	0	0%
TILE FINISHER	54	22	41%	0	0	--
TILE SETTER	212	56	26%	0	0	--
TRAFFIC CONTROL/LANE CLOSURE (LABORER)	169	158	94%	0	0	--
TREE MAINTENANCE	22,369	10,356	46%	0	0	--

LOCAL HIRING BY CONTRACTOR

PUBLIC WORKS

CONTRACTOR NAME	TOTAL WORK HOURS			TOTAL APPRENTICE HOURS		
	TOTAL	LOCAL	LOCAL %	TOTAL	LOCAL	LOCAL %
415 ELECTRIC, INC.	53	21	40%	21	21	100%
A & B PAINTING, INC.	60	0	0%	0	0	--
A. RUIZ CONSTRUCTION CO. & ASSOC., INC.	4,405	3,135	71%	8	8	100%
ABCO MECHANICAL CONTRACTORS INC	1,647	431	26%	211	166	79%
ABM ELECTRICAL POWER SERVICES, LLC	5	0	0%	0	0	--
ACCO ENGINEERED SYSTEMS	4,697	767	16%	253	0	0%
ACR GLAZING CONTRACTORS, INC.	16	0	0%	8	0	0%
AIRE SHEET METAL	305	260	85%	42	0	0%
ALEX SWEENEY CONSTRUCTION INC	440	440	100%	0	0	--
ALLIED FIRE PROTECTION	69	0	0%	0	0	--
ANDERSON ROOFING & SHEET METAL CO.,INC	35	21	60%	0	0	--
APEX TESTING LABORATORIES, INC.	92	4	4%	4	0	0%
ARBORIST NOW, INC.	192	48	25%	0	0	--
ARCH PLUMBING, INC.	859	403	47%	0	0	--
ASBESTOS MANAGEMENT GROUP	12	0	0%	0	0	--
ASBESTOS MANAGEMENT GROUP OF CALIFORNIA, INC.	22,729	451	2%	44	0	0%
ASPHALT IMPRESSIONS	102	0	0%	0	0	--
ASPHALT IMPRESSIONS INC	322	0	0%	0	0	--
ASSOCIATED TERRAZZO COMPANY, INC.	18	0	0%	18	0	0%
AUSTERMAN, INC.	7	0	0%	0	0	--
AUTOMATED SERVICES AND PRODUCTS, INC	40	0	0%	0	0	--
B&C PAINTING & DECORATING	133	133	100%	60	60	100%
B. T. MANCINI CO., INC	16	0	0%	8	0	0%
BACON PLUMBING CO INC	333	97	29%	154	89	58%
BAIRD TRUCKING, INC.	782	92	12%	0	0	--
BARTH MODULAR CONSTRUCTION, INC.	48	0	0%	16	0	0%
BASSET ENGINEERING	131	90	68%	24	24	100%
BAUMAN LANDSCAPE AND CONSTRUCTION	17,331	6,058	35%	608	444	73%
BAY AREA ARBORIST COOPERATIVE, INC.	1,900	1,441	76%	0	0	--

LOCAL HIRING BY CONTRACTOR

PUBLIC WORKS

BAY AREA LIGHTWORKS, INC.	16,326	12,231	75%	2,411	2,181	90%
BAY CITY MECHANICAL, INC	3,502	415	12%	371	21	6%
BAY LINE CUTTING & CORING, INC.	8	0	0%	0	0	--
BAY TECH ENGINEERING, INC.	2,519	1,522	60%	267	251	94%
BAYSIDE INTERIORS INC	281	0	0%	155	0	0%
BAY-TECH ELECTRIC	1,489	61	4%	530	0	0%
BAY-TECH ELECTRIC INC.	1,285	577	45%	370	0	0%
BELLANTI PLUMBING INC.	3,469	1,045	30%	938	577	62%
BERKELEY CONCRETE PUMPING, INC.	6	0	0%	0	0	--
BIRD ELECTRIC, INC.	428	199	47%	0	0	--
BUHLER COMMERCIAL	728	184	25%	184	28	15%
BULLARD'S HEATING & AIR INC	11	11	100%	0	0	--
C M & B INC DBA MAUCK SHEET METAL	18	0	0%	0	0	--
C. E. TOLAND & SON	1,316	586	45%	38	38	100%
CALIFORNIA'S CUSTOM CABINetry	6	0	0%	0	0	--
CAMAJANI TRUCKING	4,110	1,262	31%	0	0	--
CAPAX GROUP, INC.	7,116	2,583	36%	0	0	--
CAPITOL BUILDERS HARDWARE, INC.	83	12	14%	0	0	--
CEMEX. INC.	96	27	28%	0	0	--
CENTRAL CONCRETE SUPPLY	5	5	100%	0	0	--
CENTRAL CONCRETE SUPPLY CO., INC.	1,199	122	10%	0	0	--
CHARLES PANKOW BUILDERS, LTD.	11,353	3,947	35%	1,494	1,494	100%
CHARLES PANKOW CONCRETE	1,919	36	2%	66	0	0%
CHIANG C.M. CONSTRUCTION, INC.	598	495	83%	0	0	--
CHRISTIAN BROTHERS LINING, CO.	306	0	0%	0	0	--
CLW BUILDERS, INC.	33	14	42%	0	0	--
CMC TRAFFIC CONTROL SPECIALISTS DBA CMC CONSTRUCTION	16,423	10,109	62%	1,224	364	30%
COBRA TRUCKING, INC.	541	248	46%	0	0	--
COMPASS ENGINEERING CONTRACTORS, INC	27	0	0%	11	0	0%
COMTEL SYSTEMS TECHNOLOGY, INC	140	0	0%	0	0	--
CONFLO SERVICES, INC.	944	0	0%	0	0	--

LOCAL HIRING BY CONTRACTOR

PUBLIC WORKS

CONSTRUCTION SURVEY, INC.	20	0	0%	0	0	--
CONTROL AIR ENTERPRISES, LLC.	25	0	0%	4	0	0%
COSCO FIRE PROTECTION, INC.	29	5	17%	0	0	--
COVELLO'S PACIFIC AIRCARE, INC.	1,615	0	0%	0	0	--
CPM ENVIRONMENTAL, INC.	21,790	5,402	25%	4	4	100%
CREATIVE CEILINGS INC.	5	0	0%	0	0	--
CUSTOM FIRE PROTECTION	35	0	0%	18	0	0%
CUTTING EDGE DRAPERY	116	0	0%	0	0	--
CW ACOUSTICS, INC. DBA CAL WEST ACOUSTICS	174	0	0%	12	0	0%
D & S LEONG ASSOCIATES, INC.	14	14	100%	0	0	--
D.S. BAXLEY, INC.	212	0	0%	28	0	0%
D.W. NICHOLSON CORPORATION	862	0	0%	104	0	0%
DALY PIPELINES, INC.	5,327	2,817	53%	0	0	--
D'ARCY & HARTY CONSTRUCTION, INC	14,111	5,266	37%	1,803	1,651	92%
DEL MONTE ELECTRIC CO INC	833	826	99%	55	55	100%
DELAO ELECTRIC INC	19	9	47%	9	9	100%
DELTA GRINDING CO., INC. DBA DIABLO GRINDING INC.	56	0	0%	0	0	--
DETAIL GENERAL INC. DBA DETAIL IRONWORKS	18	14	78%	0	0	--
DEVANEY ENGINEERING, INC.	344	141	41%	0	0	--
DIGITAL CONCRETE SCANNING SERVICES	605	0	0%	0	0	--
DLI MECHANICAL, INC.	250	0	0%	42	0	0%
DOWDLE & SONS MECHANICAL INC	483	0	0%	115	0	0%
DR TRAFFIC CONTROL LLC	554	308	56%	92	76	83%
E.J. WEBER ELECTRIC COMPANY	16	16	100%	0	0	--
ECO BAY SERVICES, INC.	1,503	750	50%	32	8	25%
ESCUE & ASSOCIATES, INC	1,312	308	23%	0	0	--
ESQUIVEL GRADING & PAVING, INC.	32,041	9,565	30%	4,715	4,690	99%
ET'S HOT TAPPING & FREEZES	6	0	0%	0	0	--
EUROPEAN PAVING DESIGNS, INC.	726	0	0%	0	0	--
EVRA CONSTRUCTION INC	334	76	23%	0	0	--
EXCEL SITE SERVICES	572	439	77%	0	0	--

LOCAL HIRING BY CONTRACTOR

PUBLIC WORKS

EXPERT PLUMBING SOLUTIONS	87	87	100%	0	0	--
FABIO GARCIA DBA LIMPIO PROFESSIONAL CLEANING	1,102	1,102	100%	0	0	--
FJ&I ENGINEERING INC.	216	0	0%	0	0	--
FONTENOY ENGINEERING, INC.	3,521	340	10%	73	73	100%
FRIENDS OF THE URBAN FOREST	8,816	5,607	64%	0	0	--
FRISCO PRO BUILDING SERVICES, INC.	126	0	0%	0	0	--
FUENTES PAINTING & DECORATING INC.	72	0	0%	0	0	--
GARRISON DEMOLITION AND ENGINEERING INC.	383	0	0%	0	0	--
GECMS INC	698	542	78%	0	0	--
GEORGE E. MASKER, INC	60	0	0%	0	0	--
GIAMPOLINI-COURTNEY	39	0	0%	32	0	0%
GLASS AND SASH INC	20	8	40%	8	8	100%
GOLDEN BAY FENCE PLUS IRON WORKS, INC.	152	0	0%	0	0	--
GOLDEN STATE CONSTRUCTION & UTILITY, INC	5,890	5,890	100%	1,013	1,013	100%
GONSALVES & SANTUCCI INC DBA CONCO PUMPING	10	0	0%	0	0	--
GRANITE EXCAVATION & DEMOLITION INC.	842	287	34%	0	0	--
GROUND COVER LANDSCAPING, INC.	44	23	52%	0	0	--
GROUND PENETRATING RADAR SYSTEMS, LLC	8	0	0%	0	0	--
HANSAN FLOORING	524	328	63%	0	0	--
HARRISON DRYWALL INC.	5,526	1,566	28%	801	591	74%
HKD FRAMING & DRYWALL, INC.	3,178	284	9%	1,444	130	9%
HOEM & ASSOCIATES, INC	47	40	86%	0	0	--
HVYW8 TRUCKING	507	428	84%	0	0	--
IBS USA INC.	52	48	92%	8	4	50%
IDT TELECOM*DATA, INC.	176	0	0%	0	0	--
INSITUFORM TECHNOLOGIES, LLC	172	0	0%	0	0	--
INSTALLIT, INC.	57	0	0%	0	0	--
INSULATION SPECIALITES, INC	16	16	100%	0	0	--
J & A ELECTRIC INC.	81	21	26%	21	21	100%
JAMES HEWATT, INC	637	4	1%	0	0	--
JBL INDUSTRIES INC DBA JBL ACOUSTICS, INC.	49	0	0%	0	0	--

LOCAL HIRING BY CONTRACTOR

PUBLIC WORKS

JDB & SONS CONSTRUCTION INC.	15,034	11,341	75%	48	48	100%
JEFFCO PAINTING & COATING, INC.	608	180	30%	59	59	100%
JTK ELECTRIC, INC DBA SUNFLOWER ELECTRIC	1,562	171	11%	0	0	--
K.J. WOODS CONSTRUCTION, INC.	19,507	19,490	100%	1,539	1,530	99%
KIM'S FLOORING, INC.	24	8	33%	0	0	--
KIRK BUILDERS	7,482	2,137	29%	683	305	45%
KLW CONSTRUCTION, INC.	4,378	4,378	100%	264	264	100%
KM 106 CONSTRUCTION INC	24	0	0%	0	0	--
KZ TILE COMPANY	38	38	100%	0	0	--
L C GENERAL ENGINEERING & CONSTRUCTION, INC.	2,333	1,419	61%	0	0	--
LARRY SILVESTRI INC DBA HERITAGE DOORS	282	0	0%	8	0	0%
LAVINA TRUCKING, INC.	771	460	60%	0	0	--
LEE INCORPORATED	293	145	49%	0	0	--
LEYDER ELECTRIC	352	0	0%	0	0	--
LIFFEY ELECTRIC	9,267	5,301	57%	1,108	1,108	100%
LOMBARDO DIAMOND CORE DRILLING CO., INC.	16	0	0%	0	0	--
LONE STAR LANDSCAPE, INC.	378	0	0%	67	0	0%
LOU'S CONCRETE SAWING-BREAKING	46	0	0%	0	0	--
M SQUARED CONSTRUCTION INC	278	170	61%	0	0	--
MARINA LANDSCAPE, INC.	1,418	48	3%	316	16	5%
MARINA MECHANICAL	79	0	0%	0	0	--
MATRIX HG, INC.	33	0	0%	0	0	--
MB JESSEE, INC.	261	0	0%	0	0	--
MC METAL INC	94	53	57%	0	0	--
MC METAL INC.	41	41	100%	0	0	--
MCCLURE ELECTRIC, INC.	4,362	1,728	40%	0	0	--
MCKEE & CO. ELECTRIC	5,406	872	16%	154	0	0%
MCKEE AND COMPANY ELECTRIC	2,636	0	0%	137	0	0%
MCMILLAN DATA COMMUNICATIONS, INC.	58	0	0%	0	0	--
MESA ENERGY SYSTEMS, INC	180	27	15%	0	0	--
MICHAEL O'SHAUGHNESSY CONSTRUCTION, INC.	47,715	30,719	64%	4,421	4,421	100%

LOCAL HIRING BY CONTRACTOR

PUBLIC WORKS

MICROBIZ SECURITY COMPANY	16	16	100%	0	0	--
MINERVA CONSTRUCTION	4,411	933	21%	696	173	25%
MITCHELL ENGINEERING	12,061	5,907	49%	745	745	100%
MTB	4	0	0%	2	0	0%
NATIONAL AIR BALANCE CO.,INC.	8	0	0%	0	0	--
NATIONAL AIR BALANCE COMPANY INC	10	0	0%	0	0	--
NATIONAL CONSTRUCTION RENTAL	3	0	0%	0	0	--
NEARY LANDSCAPE, INC.	270	56	21%	0	0	--
NOR CAL PIPELINE SERVICES	1,241	195	16%	118	0	0%
NUEVA CASTILLA IRON WORKS, INC.	75	4	5%	0	0	--
OBS ENGINEERING, INC.	1,073	395	37%	0	0	--
ON THE LEVEL CONCRETE	1,200	424	35%	128	104	81%
PACIFIC STEEL GROUP (PSG)	200	0	0%	2	0	0%
PAGANINI ELECTRIC CORPORATION	1,372	492	36%	0	0	--
PAVEMENT COATING CO.	6,001	0	0%	0	0	--
PENHALL COMPANY - SAN LEANDRO	2,322	0	0%	0	0	--
PERFORMANCE CONTRACTING INC	112	0	0%	0	0	--
PERFORMANCE MECHANICAL	783	0	0%	142	0	0%
PHILIP BETTNEY TRUCKING, INC.	839	839	100%	0	0	--
PHOENIX ELECTRIC COMPANY	1,037	429	41%	85	28	33%
PIONEER CONTRACTORS, INC.	16	16	100%	8	8	100%
POWER CONSTRUCTION, INC.	136	64	47%	60	12	20%
PRECISION EMPRISE LLC	4,091	1,741	43%	0	0	--
PRECISION ENGINEERING, INC.	34,919	26,988	77%	1,702	1,263	74%
PRIORITY ARCHITECTURAL GRAPHICS	35	9	24%	9	9	100%
PROGRESS GLASS COMPANY INC	649	95	15%	193	71	37%
PROSPECTRA CONTRACT FLOORING - UNION CITY, CA	368	72	20%	64	0	0%
PULLMAN SST, INC.	2,090	32	2%	132	0	0%
PYRO-COMM SYSTEMS, INC	75	8	11%	0	0	--
QA CONSTRUCTORS, INC.	599	0	0%	0	0	--
QUALITY AIR SERVICES	128	0	0%	80	0	0%

LOCAL HIRING BY CONTRACTOR

PUBLIC WORKS

R&S CONSTRUCTION MANAGEMENT INC.	20,358	12,145	60%	2,126	2,052	97%
R.P. COATINGS, INC.	2,438	246	10%	572	158	28%
RED DIPPER, INC.	1,897	694	37%	814	567	70%
RELIANCE ENGINEERING INC	24	0	0%	0	0	--
RES ENGINEERS	258	0	0%	124	0	0%
RK ENGINEERING INC	2,717	1,242	46%	185	185	100%
ROADWAY CONSTRUCTION INC	5,256	470	9%	211	158	75%
ROBOTIC SEWER SOLUTIONS, INC	54	0	0%	0	0	--
ROEBUCK CONSTRUCTION , INC.	87	19	21%	0	0	--
RONALD R NELSON CONTRACTOR INC.	945	916	97%	224	224	100%
RONAN CONSTRUCTION, INC.	16,285	16,245	100%	1,217	1,185	97%
RT WESTERN, INC.	33	17	52%	6	6	100%
RUBECON GENERAL CONTRACTING, INC.	316	316	100%	16	16	100%
RUSSELL HINTON COMPANY	237	0	0%	0	0	--
S & S TRUCKING	805	0	0%	0	0	--
S&H CONCRETE CONSTRUCTION	16	0	0%	0	0	--
S.J. AMOROSO CONSTRUCTION CO., INC	6,319	1,048	17%	307	307	100%
SABAH INTERNATIONAL	8	0	0%	0	0	--
SABAH INTERNATIONAL INC.	4	0	0%	0	0	--
SACRAMENTO DRILLING INC.	59	0	0%	0	0	--
SAFE2CORE	14	0	0%	0	0	--
SAFE2CORE INC	28	0	0%	0	0	--
SAK CONSTRUCTION LLC	1,313	28	2%	28	28	100%
SAN FRANCISCO CONCRETE SCANNING & CORING	364	22	6%	4	0	0%
SAN FRANCISCO INTERIORS, INC.	575	144	25%	92	92	100%
SAN FRANCISCO ROOFING SERVICES, INC.	36	0	0%	18	0	0%
SAN FRANCISCO TERRAZZO	175	20	11%	104	0	0%
SCAFFOLD SOLUTIONS, INC.	2,278	172	8%	102	62	61%
SERVICE METAL PRODUCTS	55	0	0%	16	0	0%
SF&S INC.	1,207	1,207	100%	0	0	--
SIEMENS INDUSTRY INC	25	5	20%	0	0	--

LOCAL HIRING BY CONTRACTOR

PUBLIC WORKS

SPECIALIZED GRAPHICS	6	0	0%	0	0	--
STATEWIDE CONTRACTING OF AMERICA	41	0	0%	0	0	--
STERLING ENVIRONMENTAL	193	0	0%	0	0	--
SULLIVAN'S CONCRETE SAWING	296	0	0%	0	0	--
SUMMIT PIPELINES	365	0	0%	0	0	--
SUNSHINE COMMERCIAL CONSTRUCTION, INC.	1,530	494	32%	518	335	65%
SUPERIOR WINDOW TINTING	49	0	0%	0	0	--
SVALA CONSTRUCTION INC.	334	323	97%	0	0	--
SYSTEMS & SPACE INC	5	0	0%	0	0	--
T&T ELECTRIC CORP.	7	7	100%	0	0	--
TAP MASTER, INC	19	0	0%	0	0	--
TEMPER INSULATION CO.,INC.	36	16	44%	16	0	0%
THE PROFESSIONAL TREE CARE COMPANY	2	0	0%	0	0	--
TOTAL TRAFFIC CONTROL, INC.	32	21	67%	0	0	--
TP WINDOWS, INC. DBA SF WINDOW FACTORY	113	74	65%	0	0	--
TRANSPACIFIC STEEL INC.	90	0	0%	25	0	0%
TRINET CONSTRUCTION INC	1,965	1,466	75%	191	191	100%
U. S. ELECTRIC TECHNOLOGIES, INC.	77	30	39%	0	0	--
UNION ROLLING DOOR COMPANY	408	8	2%	159	8	5%
VALDEZ PAINTING	964	62	6%	64	0	0%
VALUE FIRE PROTECTION, INC.	1,660	603	36%	0	0	--
VORTEX INDUSTRIES LLC	68	0	0%	0	0	--
WATERTIGHT RESTORATION INC	120	88	73%	32	0	0%
WEST COAST ARBORISTS, INC	7,068	3,257	46%	0	0	--
WEST COAST DRILLING	1,514	0	0%	154	0	0%
WESTATES MECHANICAL CORPORATION	48	0	0%	8	0	0%
WESTECH ROOFING, INC	8	0	0%	0	0	--
WESTERN ROOFING SERVICE	334	37	11%	30	0	0%
WOLFF CONTRACTING, INC.	80	0	0%	0	0	--
WPCS INTERNATIONAL - SUISUN CITY, INC.	58	0	0%	29	0	0%
YADEJS, INC.	46	46	100%	0	0	--
YERBA BUENA ENGINEERING & CONSTRUCTION, INC.	9,188	2,999	33%	392	368	94%
YOLANDA'S CONSTRUCTION MANAGEMENT AND TRAFFIC CONTROL	8	8	100%	0	0	--



RECREATION AND PARK

The San Francisco Recreation and Park Department administers more than 220 parks, playgrounds, and open spaces, including two outside the city limits-- Camp Mather in Yosemite Valley and Sharp Park in Pacifica, Calif. Our park system includes 25 recreation centers, nine swimming pools, five golf courses and numerous tennis courts, ball diamonds, soccer fields and other sports venues. Included in the department's responsibilities are the Marina Yacht Harbor, the San Francisco Zoo, and Lake Merced.

LOCAL HIRING BY PROJECT

RECREATION AND PARK

PROJECT NAME	TOTAL WORK HOURS			TOTAL APPRENTICE HOURS		
	TOTAL	LOCAL	LOCAL %	TOTAL	LOCAL	LOCAL %
1000025538 GOLDEN GATE PARK GOLF COURSE CLUBHOUSE (REBID)	14,893	7,887	53%	1,702	644	38%
1000026723 STOW LAKE PERIMETER PATH RENOVATION	5,719	4,703	82%	70	70	100%
1000027040 GOLDEN GATE PARK MIDDLE LAKE REHABILITATION	32,383	12,306	38%	719	719	100%
1000027060 ESPRIT PARK RENOVATION	9,357	4,212	45%	164	68	41%
1000027068 PW FILLMORE TURK MINI PARK	12,593	7,134	57%	1,859	1,859	100%
1000028001 CROCKER AMAZON FIELDS RENOVATION	25,172	9,105	36%	3,576	326	9%
1000030027 RICHMOND PLAYGROUND RENOVATION	748	636	85%	0	0	--
1000025538 GOLDEN GATE PARK GOLF COURSE CLUBHOUSE (REBID)	14,893	7,887	53%	1,702	644	38%

LOCAL HIRING BY TRADE

TRADE	TOTAL WORK HOURS			TOTAL APPRENTICE HOURS		
	TOTAL	LOCAL	LOCAL %	TOTAL	LOCAL	LOCAL %
ASBESTOS REMOVAL WORKER	120	80	67%	0	0	--
CARPENTER AND RELATED TRADES	5,352	2,866	54%	190	168	88%
CARPET,LINOLEUM	4,237	66	2%	1,609	0	0%
CEMENT MASON	2,135	467	22%	129	129	100%
DRIVER	4,662	304	7%	0	0	--
ELECTRICIAN	1,726	370	21%	609	322	53%
FIELD SURVEYOR	69	14	20%	0	0	--
GLAZIER	460	0	0%	150	0	0%
IRON WORKER	195	114	58%	0	0	--
LABORER AND RELATED CLASSIFICATIONS	20,790	11,587	56%	1,108	1,012	91%
OPERATING ENGINEER	8,705	6,410	74%	24	24	100%
PAINTER	92	0	0%	0	0	--
PLUMBER	1,137	577	51%	188	188	100%
ROOFER	105	0	0%	38	0	0%
SHEET METAL WORKER	73	36	49%	0	0	--
TEAMSTER	468	68	14%	0	0	--
TILE FINISHER	48	0	0%	0	0	--
TILE SETTER	24	0	0%	0	0	--
TREE MAINTENANCE	35	35	100%	0	0	--

LOCAL HIRING BY CONTRACTOR

RECREATION AND PARK

CONTRACTOR NAME	TOTAL WORK HOURS			TOTAL APPRENTICE HOURS		
	TOTAL	LOCAL	LOCAL %	TOTAL	LOCAL	LOCAL %
ALL IN TILE	72	0	0%	0	0	--
AMERICAN GLASS DBA AMERICAN GLASS & GLAZING	460	0	0%	150	0	0%
BAIRD TRUCKING, INC.	4,246	304	7%	0	0	--
BAUMAN LANDSCAPE AND CONSTRUCTION	14,345	6,229	43%	377	377	100%
CAL ROCK TRANSPORT, INC.	15	0	0%	0	0	--
CATMEX	2,480	2,323	94%	0	0	--
CONSTRUCTION SURVEY, INC.	37	0	0%	0	0	--
ECO BAY SERVICES, INC.	120	80	67%	0	0	--
EGGLI LANDSCAPE CONTRACTORS, INC.	176	56	32%	48	0	0%
FIELD TURF USA	4,237	66	2%	1,609	0	0%
G TRUCK SERVICES INC.	7	0	0%	0	0	--
GECMS INC.	2,384	887	37%	0	0	--
GREENBAY TRANSPORT LLC.	323	0	0%	0	0	--
GUERRERO R TRANSPORT, LLC	11	0	0%	0	0	--
INSTALLIT, INC.	38	0	0%	0	0	--
JDB & SONS CONSTRUCTION INC.	181	120	66%	0	0	--
KEARNEY PLUMBING, INC.	401	137	34%	0	0	--
MERIDIAN SURVEYING ENGINEERING, INC.	32	14	44%	0	0	--
MINERVA CONSTRUCTION	5,426	3,544	65%	179	163	91%
NOR CAL PIPELINE SERVICES	78	0	0%	0	0	--
O' KANE STRUCTURAL STEEL, INC.	195	114	58%	0	0	--
OBS ENGINEERING, INC.	5,606	2,876	51%	930	930	100%
O'CONNOR PIPELINES	452	355	79%	0	0	--
Q4 MECHANICAL CORPORATION	73	36	49%	0	0	--
QA CONSTRUCTORS, INC.	67	0	0%	0	0	--
RED DIPPER, INC.	1,635	370	23%	609	322	53%
RELIABLE TREE EXPERTS INC.	220	17	8%	65	17	26%
RONAN CONSTRUCTION, INC.	492	492	100%	35	35	100%
SAN FRANCISCO ROOFING SERVICES, INC.	105	0	0%	38	0	0%
TOBY'S TRUCKING	60	0	0%	0	0	--
TREATY CONSTRUCTION	6,317	4,975	79%	0	0	--
VALDEZ PAINTING	92	0	0%	0	0	--
VERSATILE FALL PROTECTION	53	0	0%	6	0	0%

SAN FRANCISCO INTERNATIONAL AIRPORT



San Francisco International Airport is a transparent organization dedicated to serving our local community as well as the millions of travelers who pass through our doors each year.

LOCAL HIRING BY PROJECT

SAN FRANCISCO INTERNATIONAL AIRPORT

PROJECT NAME	TOTAL WORK HOURS			TOTAL APPRENTICE HOURS		
	TOTAL	LOCAL	LOCAL %	TOTAL	LOCAL	LOCAL %
10010.66-10010.66 - NEW BOARDING AREA B	4,529	2,767	61%	1,248	1,248	100%
10011.66-10011.66 - TERMINAL 1 CENTER RENOVATION	1,027,105	254,317	25%	185,048	67,257	36%
10071-10071.76 - TERMINAL 3 WEST MODERNIZATION PROJECT	12,044	3,022	25%	2,158	210	10%
10072-10072.66 - COURTYARD 3 CONNECTOR	5,244	1,680	32%	484	460	95%
10553.61- ITB FIRE ALARM SYSTEM UPGRADE	6,881	1,252	18%	427	427	100%
11068-11068.66 - DESIGN-BUILD SERVICES FOR EMCS PROJECT	26,312	14,311	54%	3,310	3,081	93%
11071.76 - PUBLIC ADDRESS SYSTEM UPGRADE	1,440	618	43%	0	0	--
11105.61 - INTERNATIONAL TERMINAL DEPARTURES LEVEL VIADUCT SEISMICJOINTS REPAIRS	4,547	1,156	25%	53	0	0%
11118.76 - DESIGN-BUILD SERVICES FOR INTERNATIONAL TERMINAL BUILDING PHASE 1	521	165	32%	20	20	100%
11309.61 - FIREHOUSE #2 IMPROVEMENTS	9,425	3,184	34%	861	765	89%
11330.52 - MASTER AS-NEEDED ENVIRONMENTAL REMEDIATION SERVICES	3,308	1,829	55%	276	276	100%
11365.66 - DESIGN-BUILD SERVICES FOR THE INTERNATIONAL TERMINAL BUILDING PHASE 2 PROJECT	58,115	16,999	29%	5,955	3,173	53%
11407.61 - EAST UNDERPASS SAFETY IMPROVEMENTS	10,115	6,456	64%	766	53	7%
11418.61 - TERMINAL 3 BOARDING AREA F ROOF REPLACEMENT	25,098	17,528	70%	10,976	8,619	79%
11439.61 - NEW METHANE GAS LEAK DETECTION SYSTEM IN THE CENTRAL UTILITY TUNNEL	3,304	2,626	79%	896	896	100%
11470.61 - BA/TRTS 12KV DISTRIBUTION REPLACEMENT PH 1	5,178	3,434	66%	0	0	--
11576.66 - D/B SEWER TREATMENT PLANT IMPROVEMENTS	53,424	22,858	43%	8,153	5,201	64%
11652.51 - AS-NEEDED AGREEMENT FOR AIRPORT-WIDE ELECTRICAL REPAIRS AND CONSTRUCTION	329	320	97%	14	14	100%
11652.52 - AS-NEEDED AGREEMENT FOR AIRPORT-WIDE ELECTRICAL REPAIRS AND CONSTRUCTION	41	41	100%	0	0	--
11656.71 - AIRFIELD IMPROVEMENT PROGRAM 2020/2021	2,475	420	17%	64	0	0%
11689.52 - AS-NEEDED CONSTRUCTION SERVICES	1,594	625	39%	220	148	67%
11689.53 - AS-NEEDED CONSTRUCTION SERVICES	1,890	1,603	85%	401	371	93%
11689.54 - AS-NEEDED CONSTRUCTION SERVICES	4,333	845	20%	82	0	0%
11689.56 - AS-NEEDED CONSTRUCTION SERVICES	3,473	875	25%	240	0	0%
11692.52 - AS-NEEDED AGREEMENT FOR FIRE PROTECTION CONSTRUCTION SERVICES	518	8	2%	0	0	--
11692.53 - AS-NEEDED AGREEMENT FOR FIRE PROTECTION CONSTRUCTION SERVICES	128	112	88%	16	0	0%
11711.61 -STORM DRAIN PUMP STATION OUTFALL STRUCTURE RETROFIT PHASE II PROJECT - SDPS-1A	5,417	647	12%	541	82	15%
11786.50 -AS-NEEDED CONSTRUCTION SERVICES FOR AIRPORT PAVEMENT AND DRAINAGE IMPROVEMENTS	2,689	602	22%	11	11	100%
8607.61 - 12KV CABLE REPLACEMENT AND SYSTEM UPGRADE	8,096	6,051	75%	1,000	1,000	100%
8768.66-8768.66 - AIRPORT HOTEL PROJECT	64	0	0%	0	0	--

LOCAL HIRING BY TRADE

SAN FRANCISCO INTERNATIONAL AIRPORT

TRADE	TOTAL WORK HOURS			TOTAL APPRENTICE HOURS		
	TOTAL	LOCAL	LOCAL %	TOTAL	LOCAL	LOCAL %
ASBESTOS REMOVAL WORKER	917	585	64%	0	0	--
ASBESTOS WORKER, HEAT AND FROST INSULATOR	2,618	287	11%	266	0	0%
BRICKLAYER, BLOCKLAYER	641	0	0%	0	0	--
BUILDING/CONSTRUCTION INSPECTOR AND FIELD SOILS AND MATERIAL TESTER	76	0	0%	0	0	--
CARPENTER AND RELATED TRADES	97,308	13,647	14%	20,859	4,223	20%
CARPET, LINOLEUM	1,448	171	12%	217	16	7%
CEMENT MASON	3,037	492	16%	280	48	17%
DREDGER (OPERATING ENGINEER)	8	0	0%	0	0	--
DRIVER	2,208	365	17%	0	0	--
DRYWALL INSTALLER/LATHER	74,119	16,467	22%	15,103	4,762	32%
ELECTICAL UTILITY LINEMAN	99	83	84%	0	0	--
ELECTRICIAN	180,416	85,462	47%	24,008	17,976	75%
ELEVATOR CONSTRUCTOR	9,393	2,843	30%	2,644	1,005	38%
FIELD SURVEYOR	663	193	29%	69	37	54%
GLAZIER	10,042	3,202	32%	2,742	959	35%
IRON WORKER	27,850	3,925	14%	6,619	1,169	18%
LABORER AND RELATED CLASSIFICATIONS	80,763	18,081	22%	3,863	914	24%
OPERATING ENGINEER	10,092	2,208	22%	2,414	50	2%
PAINTER	15,297	1,470	10%	1,375	272	20%
PARKING AND HIGHWAY IMPROVEMENT PAINTER	1,256	282	22%	16	0	0%
PILE DRIVER	2,352	0	0%	271	0	0%
PLASTER TENDER	9,378	645	7%	496	0	0%
PLASTERER	4,702	377	8%	8	0	0%
PLUMBER	39,348	14,063	36%	12,439	7,858	63%
ROOFER	29,107	8,819	30%	7,479	4,310	58%
SHEET METAL WORKER	20,010	8,390	42%	7,497	3,044	41%
TEAMSTER	337	40	12%	0	0	--
TERRAZZO WORKER	13,528	190	1%	1,405	0	0%
TILE FINISHER	2,822	338	12%	899	16	2%
TILE SETTER	3,312	0	0%	643	0	0%
TRAFFIC CONTROL/LANE CLOSURE (LABORER)	675	554	82%	0	0	--

LOCAL HIRING BY CONTRACTOR

SAN FRANCISCO INTERNATIONAL AIRPORT

CONTRACTOR NAME	TOTAL WORK HOURS			TOTAL APPRENTICE HOURS		
	TOTAL	LOCAL	LOCAL %	TOTAL	LOCAL	LOCAL %
ACCO ENGINEERED SYSTEMS	886	93	11%	3	0	0%
ALCAL SPECIALTY CONTRACTING, INC.	1,049	0	0%	132	0	0%
ALL PHASE ELECTRICAL INCORPORATED	735	735	100%	186	186	100%
AMERICAN TERRAZZO CO.	863	84	10%	0	0	--
ANDERSON COMMERCIAL FLOORING	692	40	6%	0	0	--
ANNING-JOHNSON COMPANY - HAYWARD	363	0	0%	169	0	0%
ANRAK CORPORATION	47	0	0%	0	0	--
ANVIL BUILDERS	11,801	2,591	22%	0	0	--
ARCHITECTURAL GLASS & ALUMINUM CO.,INC.	10,012	3,202	32%	2,727	959	35%
ASSOCIATED TERRAZZO COMPANY, INC.	12,666	106	1%	1,405	0	0%
AYOOB & PEERY PLUMBING	48	40	83%	8	0	0%
B. T. MANCINI CO., INC.	7,428	0	0%	2,449	0	0%
BAF SPECIALTY INC.	1,917	32	2%	71	0	0%
BAILEY FENCE COMPANY, INC.	4	0	0%	0	0	--
BAIRD TRUCKING, INC.	49	16	33%	0	0	--
BASS ELECTRIC	4,455	3,981	89%	392	392	100%
BATTALION ONE FIRE PROTECTION	259	4	2%	0	0	--
BAY AREA TRAFFIC SOLUTIONS INC	54	0	0%	8	0	0%
BAYSIDE INSULATION, INC.	2,439	198	8%	266	0	0%
BECKER ELECTRIC INC.	380	0	0%	0	0	--
BEI STEEL, INC.	777	317	41%	185	0	0%
BERKELEY CONCRETE PUMPING	383	23	6%	0	0	--
BRADY AIR CONDITIONING	438	438	100%	8	8	100%
BRANDSAFWAY SERVICES, LLC.- BENICIA, CA	336	164	49%	88	88	100%
BULLARD'S HEATING & AIR INC	1,446	1,446	100%	0	0	--

LOCAL HIRING BY CONTRACTOR

SAN FRANCISCO INTERNATIONAL AIRPORT

BURKE DIVERSIFIED DBA J KOEHLER STEEL	92	0	0%	0	0	--
C. E. TOLAND & SON	612	280	46%	0	0	--
CAL PACIFIC SYSTEMS	56	56	100%	0	0	--
CALIFORNIA DRYWALL COMPANY	12,521	660	5%	2,620	589	22%
CAPITOL BUILDERS HARDWARE, INC.	1,627	16	1%	12	0	0%
CASEY-FOGLI CONCRETE CONTRACTORS, INC	24	0	0%	12	0	0%
CELL-CRETE CORPORATION	167	24	14%	12	12	100%
CELTIC SCAFFOLDING INC.	16	16	100%	0	0	--
CF ARCHIBALD PAVING INC.	255	104	41%	16	16	100%
CHAMPION CONTRACTORS	2,740	116	4%	8	0	0%
CLEAN HARBORS ENVIRONMENTAL SERVICES, INC	360	0	0%	0	0	--
CONSTRUCTION SURVEY, INC.	37	0	0%	0	0	--
COSCO FIRE PROTECTION, INC.	77	0	0%	0	0	--
CPM ENVIRONMENTAL, INC.	892	0	0%	269	0	0%
CRITCHFIELD MECHANICAL, INC.	37,633	16,604	44%	14,470	9,037	62%
CUNHA SURVEYING, INC.	64	0	0%	32	0	0%
CUPERTINO ELECTRIC INC.	7,204	3,802	53%	1,185	1,185	100%
DAVID M SCHMITT	590	0	0%	314	0	0%
DEL SECCO DIAMOND CORE & SAW, INC.	367	27	7%	0	0	--
DELAO ELECTRIC INC	253	117	46%	0	0	--
DMS DRYWALL & INTERIOR SYSTEMS INC	8	0	0%	0	0	--
DOLAN CONCRETE CONSTRUCTION	2,541	107	4%	356	0	0%
DON LAWLEY COMPANY, INC.	59	0	0%	0	0	--
DRILL TECH DRILLING & SHORING, INC	79	0	0%	16	0	0%
DRS MARINE, INC.	2,352	0	0%	271	0	0%
DRYCO CONSTRUCTION, INC.	41	0	0%	0	0	--
ELECTRICAL RELIABILITY SERVICES	80	0	0%	6	0	0%

LOCAL HIRING BY CONTRACTOR

SAN FRANCISCO INTERNATIONAL AIRPORT

ELECTRONIC INNOVATIONS, INC.	9	5	51%	0	0	--
F.D. THOMAS, INC.	14,564	8	0%	1,746	0	0%
FIDATO	10,688	6,855	64%	2,773	2,773	100%
FLORIAN INDUSTRIES, INC.	1,978	455	23%	1,466	455	31%
FONTENOY ENGINEERING, INC.	7,987	3,268	41%	122	122	100%
FRANK M BOOTH, INC.	541	263	49%	97	97	100%
GEORGE E. MASKER, INC	6,243	372	6%	832	220	26%
GK CONSTRUCTION	170	87	51%	0	0	--
GOLDEN GATE CONSTRUCTORS	468	0	0%	0	0	--
GROUND CONTROL, INC.	64	16	25%	0	0	--
H&M FIRE PROTECTION, INC.	18	0	0%	0	0	--
HANSFORD INDUSTRIES INC, DBA VIKING STEEL	792	0	0%	44	0	0%
HENSEL PHELPS CONSTRUCTION CO INC	36,267	3,908	11%	5,196	1,978	38%
HONEYWELL INTERNATIONAL INC	3,770	0	0%	0	0	--
HOSELEY CORPORATION	1,191	845	71%	109	109	100%
HVYW8 TRUCKING	466	0	0%	0	0	--
IDEAL RESTORATION, INC.	898	533	59%	0	0	--
INTERSTATE CONCRETE PUMPING	131	0	0%	0	0	--
ISEC INC - FREMONT, CA	10,150	1,145	11%	1,635	900	55%
ISEC, INC	88	32	36%	13	13	100%
JERRY THOMPSON & SONS PAINTING	17	17	100%	0	0	--
JOHNSON CONTROLS FIRE PROTECTION LP	2,504	0	0%	0	0	--
JTK ELECTRIC, INC DBA SUNFLOWER ELECTRIC	16,188	11,841	73%	2,043	1,920	94%
KIM'S FLOORING, INC.	131	131	100%	16	16	100%
KONE INC. - SAN LEANDRO	4,714	1,879	40%	1,534	759	49%
KR SURFACE INDUSTRIES, INC.	1,168	282	24%	0	0	--
KWAN WO IRONWORKS	1,577	1,369	87%	104	24	23%

LOCAL HIRING BY CONTRACTOR

SAN FRANCISCO INTERNATIONAL AIRPORT

L C GENERAL ENGINEERING & CONSTRUCTION, INC.	5	0	0%	0	0	--
LEWIS M. MERLO INC.	456	388	85%	0	0	--
LIBERTY ELECTRIC OF SAN MATEO, INC.	485	156	32%	0	0	--
LIFFEY ELECTRIC	156	156	100%	7	7	100%
LLOYD W. AUBRY COMPANY, INC	37,415	1,019	3%	11,559	420	4%
LOMBARDO DIAMOND CORE DRILLING CO., INC.	188	0	0%	16	0	0%
MCCARTHY BUILDING COMPANIES, INC	7,209	1,193	17%	0	0	--
MCGUIRE & HESTER	12,048	364	3%	2,112	8	0%
MCMILLAN ELECTRIC	1,793	1,018	57%	346	346	100%
MESA ENERGY SYSTEMS, INC	350	100	29%	24	0	0%
MINERVA CONSTRUCTION	4,208	2,474	59%	373	32	9%
NEVELL GROUP INC	79,359	17,351	22%	14,790	4,762	32%
NEWCASTLE ROOFING	80	0	0%	0	0	--
NIBBI BROS ASSOCIATES, INC. DBA NIBBI CONCRETE	9,404	4,815	51%	167	0	0%
O'BRIEN STEEL ERECTORS, INC.	5,768	40	1%	1,254	40	3%
OLSON & CO. STEEL	5,179	372	7%	128	0	0%
PACIFIC ENGINEERING AND CONSTRUCTION, INC.	396	382	96%	138	138	100%
PACIFIC ERECTORS, INC	252	32	13%	60	32	53%
PACIFIC STEEL GROUP (PSG)	2,514	589	23%	678	334	49%
PAN-PACIFIC MECHANICAL	6,045	2,764	46%	2,414	1,558	65%
PAVEMENT ENGINEERING INC.	76	0	0%	0	0	--
PAVEMENT RECYCLING SYSTEMS	12	0	0%	0	0	--
PERFORMANCE CONTRACTING INC	6	0	0%	0	0	--
PILOT CONSTRUCTION MANAGEMENT, INC.	6	6	100%	0	0	--
PIONEER CONTRACTORS, INC.	10,884	8,781	81%	5,254	4,310	82%
PLANT CONSTRUCTION COMPANY, LP	6,225	2,339	38%	6	6	100%
PRIORITY ARCHITECTURAL GRAPHICS	649	166	26%	74	0	0%

LOCAL HIRING BY CONTRACTOR

SAN FRANCISCO INTERNATIONAL AIRPORT

PUMP REPAIR SERVICE CO	46	28	60%	0	0	--
R.P. COATINGS, INC.	463	0	0%	0	0	--
RED DIPPER, INC.	3,695	2,002	54%	578	402	70%
REDWOOD ELECTRIC GROUP	89,654	42,395	47%	13,032	7,304	56%
RK ENGINEERING INC	785	319	41%	41	41	100%
ROLLING PLAINS CONSTRUCTION, INC	14,618	1,021	7%	496	0	0%
RONAN CONSTRUCTION, INC.	374	374	100%	0	0	--
ROSENDIN ELECTRIC, INC.	43,532	14,571	33%	3,463	3,463	100%
RUBECON GENERAL CONTRACTING, INC.	683	266	39%	172	172	100%
SAN FRANCISCO INTERIORS, INC.	139	13	9%	61	13	21%
SAN FRANCISCO MILLWORK, INC.	2,122	1,384	65%	12	0	0%
SCHEMBRI CONSTRUCTION CO., INC.	1,748	0	0%	0	0	--
SERVICE METAL PRODUCTS	336	0	0%	64	0	0%
SIERRA TRAFFIC MARKINGS INC.	47	0	0%	16	0	0%
SILVERADO CONTRACTORS, INC.	771	731	95%	0	0	--
SMOKE GUARD CALIFORNIA, INC.	8	0	0%	0	0	--
SONOMA FABRICATORS, INC	18	0	0%	0	0	--
SOUTHLAND INDUSTRIES	813	261	32%	151	16	11%
STERLING ENVIRONMENTAL	96	64	67%	0	0	--
STOMPER COMPANY INC	8,123	1,421	17%	1,949	584	30%
T3, INC.	126	0	0%	63	0	0%
TAP MASTER, INC	36	0	0%	0	0	--
TEAM NORTH CONSTRUCTION SERVICES INC.	1,694	349	21%	0	0	--
TELAMON ENGINEERING CONSULTANTS, INC.	550	193	35%	37	37	100%
TEMPER INSULATION CO.,INC.	8	8	100%	0	0	--
THE HERRICK CORPORATION	1,031	400	39%	344	252	73%
THYSSENKRUPP ELEVATOR - HAYWARD, CA	4,679	964	21%	1,111	246	22%

LOCAL HIRING BY CONTRACTOR

SAN FRANCISCO INTERNATIONAL AIRPORT

TOTAL TRAFFIC CONTROL, INC.	629	554	88%	0	0	--
TRANSBAY FIRE PROTECTION, INC.	7,320	244	3%	2,576	0	0%
TRANSPACIFIC STEEL, LLC	468	72	15%	108	32	30%
TRI VALLEY WATER TRUCKS, INC.	57	40	71%	0	0	--
TRICO CONSTRUCTION	903	136	15%	0	0	--
TRI-TOOL	8	0	0%	0	0	--
TRYCO ELECTRIC, INC.	108	0	0%	0	0	--
TURNER CONSTRUCTION COMPANY	2,009	839	42%	538	44	8%
U.S. PERMA, INC. DBA CALIFORNIA TILE INSTALLERS	6,134	338	6%	1,543	16	1%
UNION ROLLING DOOR COMPANY	30	0	0%	15	0	0%
URBAN WATERPROOFING	1,636	18	1%	27	0	0%
VALDEZ PAINTING	338	126	37%	92	52	57%
VALUE FIRE PROTECTION, INC.	408	136	33%	136	136	100%
VEC	12	0	0%	0	0	--
WATERPROOFING ASSOCIATES, INC.	844	0	0%	52	0	0%
WATERTIGHT RESTORATION INC	60	60	100%	0	0	--
WEBCOR BUILDERS	32	0	0%	0	0	--
WESTERN PACIFIC MOBILE SERVICES INC	986	0	0%	0	0	--
WJJ-D&H INC.,	168	168	100%	0	0	--
YERBA BUENA ENGINEERING & CONSTRUCTION, INC.	1,271	438	34%	120	0	0%

PRIVATE DEVELOPMENT



Construction projects on property owned by the City and County of San Francisco, or on City-owned property sold to private parties for the purpose of housing , are covered by the Local Hiring Policy.

LOCAL HIRING BY PROJECT

PRIVATE DEVELOPMENTS ON CITY PROPERTY

PROJECT NAME	TOTAL WORK HOURS			TOTAL APPRENTICE HOURS		
	TOTAL	LOCAL	LOCAL %	TOTAL	LOCAL	LOCAL %
30 VAN NESS	56,975	3,939	7%	3,446	221	6%
35 ONONDAGA - TENANT IMPROVEMENT	3,359	434	13%	876	258	29%
CLINIC BY THE BAY ONONDAGA	13,730	3,689	27%	3,585	1,030	29%
FC PIER 70 BUILDING 12	1,416	62	4%	48	0	0%
MISSION ROCK HORIZONTAL	231,877	44,441	19%	15,194	6,860	45%
MISSION ROCK PARCEL A	356,001	72,328	20%	65,116	18,755	29%
MISSION ROCK PARCEL B	197,923	44,450	22%	26,720	7,414	28%
MISSION ROCK PARCEL F	683,771	112,208	16%	106,823	37,320	35%
MISSION ROCK PARCEL G	42,076	7,620	18%	4,464	1,863	42%
POTRERO POWER STATION POWER STATION HORIZONTAL CONSTRUCTION	28,137	14,582	52%	5,896	4,584	78%
POTRERO POWER STATION STREET IMPROVEMENT PLAN	1,153	1,148	100%	184	184	100%

LOCAL HIRING BY TRADE

PRIVATE DEVELOPMENTS ON CITY PROPERTY

TRADE	TOTAL WORK HOURS			TOTAL APPRENTICE HOURS		
	TOTAL	LOCAL	LOCAL %	TOTAL	LOCAL	LOCAL %
ASBESTOS REMOVAL WORKER	3	0	0%	0	0	--
ASBESTOS WORKER, HEAT AND FROST INSULATOR	5,223	1,290	25%	810	275	34%
BRICKLAYER, BLOCKLAYER	8,952	581	6%	1,148	442	39%
BRICKTENDER	855	0	0%	24	0	0%
BUILDING/CONSTRUCTION INSPECTOR AND FIELD SOILS AND MATERIAL TESTER	17	0	0%	0	0	--
CARPENTER AND RELATED TRADES	108,389	18,434	17%	25,003	6,734	27%
CARPET,LINOLEUM	5,067	738	15%	861	477	55%
CEMENT MASON	30,198	1,705	6%	1,997	857	43%
DRIVER	12,665	1,411	11%	0	0	--
DRYWALL INSTALLER/LATHER	58,901	2,853	5%	5,434	1,593	29%
ELECTICAL UTILITY LINEMAN	453	0	0%	74	0	0%
ELECTRICIAN	78,158	23,958	31%	13,773	5,568	40%
ELEVATOR CONSTRUCTOR	15,699	9	0%	5,451	6	0%
FIELD SURVEYOR	2,728	325	12%	858	0	0%
GLAZIER	39,078	7,258	19%	8,928	2,111	24%
IRON WORKER	32,885	2,617	8%	5,558	764	14%
LABORER AND RELATED CLASSIFICATIONS	172,266	44,639	26%	6,637	5,436	82%
MARBLE MASON	502	0	0%	29	0	0%
MODULAR FURNITURE INSTALLER	725	0	0%	38	0	0%
OPERATING ENGINEER	36,703	9,602	26%	3,447	2,666	77%
PAINTER	44,575	13,432	30%	8,120	3,679	45%
PARKING AND HIGHWAY IMPROVEMENT PAINTER	16	0	0%	5	0	0%
PILE DRIVER	2,865	0	0%	675	0	0%
PLASTER TENDER	291	73	25%	0	0	--
PLASTERER	1,047	22	2%	111	0	0%
PLUMBER	62,146	12,359	20%	15,006	5,854	39%
ROOFER	28,486	1,822	6%	4,176	70	2%
SHEET METAL WORKER	35,285	4,311	12%	5,576	2,338	42%
TEAMSTER	11	0	0%	0	0	--
TERRAZZO WORKER	3,597	0	0%	876	0	0%
TILE FINISHER	11,732	3,515	30%	1,076	346	32%
TILE SETTER	8,695	1,498	17%	486	32	7%

LOCAL HIRING BY CONTRACTOR

PRIVATE DEVELOPMENTS ON CITY PROPERTY

CONTRACTOR NAME	TOTAL WORK HOURS			TOTAL APPRENTICE HOURS		
	TOTAL	LOCAL	LOCAL %	TOTAL	LOCAL	LOCAL %
415 ELECTRIC, INC.	843	305	36%	305	305	100%
A. ZAHNER COMPANY	310	0	0%	0	0	--
ACCESS SYSTEMS & SOLUTIONS, INC.	400	0	0%	0	0	--
ACCO ENGINEERED SYSTEMS	12,463	2,523	20%	1,706	1,081	63%
ACOSTA & SONS INC	296	8	3%	69	0	0%
AHLBORN FENCE & STEEL, INC.	578	52	9%	194	52	27%
AHLBORN STRUCTURAL STEEL	81	0	0%	24	0	0%
AIR SYSTEMS INC.	3,457	0	0%	686	0	0%
AJS PAINTING DECORATING	13,743	7,161	52%	2,392	1,953	82%
ALCAL SPECIALTY CONTRACTING, INC.	128	24	19%	48	0	0%
ALLIANCE ROOFING COMPANY, INC.	17,712	1,509	9%	3,173	0	0%
ALLIED FIRE PROTECTION	10,415	4,195	40%	2,210	887	40%
ALLIED HEATING & AIR CONDITIONING	631	0	0%	144	0	0%
ALTA ENGINEERING GROUP, INC.	295	32	11%	56	16	29%
AMERICAN TERRAZZO CO.	3,597	0	0%	876	0	0%
ANCO IRON & CONSTRUCTION INC.	238	170	71%	0	0	--
ANNING-JOHNSON COMPANY - HAYWARD	10,122	627	6%	1,166	490	42%
AQUA PROOF, INC	4,704	0	0%	350	0	0%
BABAK TRUCKING, INC.	6	0	0%	0	0	--
BACON PLUMBING CO INC	3,719	847	23%	1,288	430	33%
BAF SPECIALTY INC	122	0	0%	0	0	--
BAF SPECIALTY INC.	4,284	0	0%	362	0	0%
BAUMAN LANDSCAPE AND CONSTRUCTION	1,662	1,662	100%	0	0	--
BAY AREA COMMERCIAL SWEEPING INC.	10	0	0%	0	0	--
BAY AREA COMMERCIAL WATER TRUCKS LLC	8	0	0%	0	0	--
BAY AREA CONCRETES, INC.	204	16	8%	22	16	73%
BEAR SCAFFOLD AND SERVICES	192	0	0%	10	0	0%
BEI STEEL, INC.	5,886	1,547	26%	1,222	474	39%
BENNETT MARINE UTILITY	8	4	50%	0	0	--
BETTER WAY CONSTRUCTORS	720	360	50%	0	0	--
BIG PIPE MECHANICAL	7,671	1,136	15%	1,255	1,136	91%
BIGGE CRANE & RIGGING	300	0	0%	0	0	--

LOCAL HIRING BY CONTRACTOR

PRIVATE DEVELOPMENTS ON CITY PROPERTY

BIGGE CRANE & RIGGING CO.	1,481	0	0%	107	0	0%
BKF ENG	14	0	0%	4	0	0%
BLUES ROOFING COMPANY	409	16	4%	55	16	29%
BRIGHTVIEW LANDSCAPE DEVELOPMENT	358	0	0%	0	0	--
C. E. TOLAND & SON	883	286	32%	96	96	100%
CAL WEST CONCRETE CUTTING	39	0	0%	0	0	--
CANNING ELECTRIC INC	2,241	1,189	53%	875	441	50%
CELL-CRETE CORPORATION	4,147	58	1%	337	20	6%
CEMEX CONSTRUCTION MATERIAL PACIFIC LLC	2,174	511	24%	0	0	--
CEMEX. INC.	78	14	17%	0	0	--
CENTRAL CONCRETE SUPPLY	379	11	3%	0	0	--
CENTRAL CONCRETE SUPPLY CO., INC.	106	3	3%	0	0	--
CHAMPION CONTRACTORS	4,501	68	1%	131	0	0%
CK INTERIORS, INC.	56	0	0%	0	0	--
CLARK PACIFIC	47,047	6,430	14%	8,160	1,738	21%
CLEVELAND MARBLE LP	254	0	0%	0	0	--
CLYDE COLLISHAW SPRINKLERS	665	0	0%	0	0	--
CMC TRAFFIC CONTROL SPECIALISTS DBA CMC CONSTRUCTION	28	14	50%	6	6	100%
COAST BUILDING PRODUCTS	716	0	0%	16	0	0%
CREATIVE SHOWER DOOR CORP	159	0	0%	39	0	0%
CRITCHFIELD MECHANICAL, INC. (CMI)	21,430	2,473	12%	3,987	2,008	50%
CROWN SHEET METAL & SKYLIGHTS, INC	354	0	0%	0	0	--
CUNHA SURVEYING, INC.	136	0	0%	17	0	0%
CUPERTINO ELECTRIC INC.	66,746	18,425	28%	11,180	4,356	39%
CUSTOM SCAFFOLD	52	0	0%	7	0	0%
D & J TILE COMPANY, INC.	20,269	5,014	25%	1,547	378	24%
DE HARO RAMIREZ GROUP	27,636	2,893	10%	2,179	1,013	46%
DECKER LANDSCAPING, INC.	1,648	0	0%	0	0	--
DESILVA GATES CONSTRUCTION	1,523	1,273	84%	339	323	95%
DFS COMMERCIAL, INC.	284	80	28%	80	80	100%
EGAN PLUMBING, INC.	896	0	0%	418	0	0%
EIGHTEEN TRUCKING, INC.	6,653	397	6%	0	0	--
ENGEL HOLDINGS, INC. DBA SAFWAY ATLANTIC	1,795	0	0%	109	0	0%
EUROPEAN PAVING DESIGNS, INC.	1,811	0	0%	0	0	--

LOCAL HIRING BY CONTRACTOR

PRIVATE DEVELOPMENTS ON CITY PROPERTY

EXCELLCO COATING, INC	13	5	36%	0	0	--
F.D. THOMAS, INC.	8,142	219	3%	553	0	0%
F3 & ASSOCIATES INC.	203	0	0%	0	0	--
FIRESTOP SPECIALTIES INC.	21	0	0%	0	0	--
FISHER DESIGN + BUILD, INC.	3,526	486	14%	584	328	56%
FLOOR SEAL TECHNOLOGY	28	0	0%	0	0	--
G & M APPLIANCE SUPPLY, INC.	1,650	1,175	71%	0	0	--
GECMS INC	240	118	49%	0	0	--
GILL BROTHERS EXPRESS INC	11	0	0%	0	0	--
GILL BROTHERS TRANSPORT INC	11	0	0%	0	0	--
GOLDEN STATE TRUCKING	11	0	0%	0	0	--
GORDON N BALL INC	2,365	276	12%	600	0	0%
GRANITE ROCK COMPANY - PRG	41	0	0%	0	0	--
GREENBAY TRANSPORT LLC.	49	0	0%	0	0	--
GROUND CONTROL SYSTEM	144	0	0%	0	0	--
GROUND FORCE ENTERPRISES	25	0	0%	0	0	--
GUERRERO R TRANSPORT, LLC	7	0	0%	0	0	--
H&M FIRE PROTECTION, INC.	190	0	0%	10	0	0%
HARMON TRUCKING LLC	8	8	100%	0	0	--
HARRIS HOISTING	6,224	3,470	56%	1,359	1,260	93%
HATHAWAY DINWIDDIE/NIBBI JOINT VENTURE	23,444	11,754	50%	1,409	1,105	78%
HATTON CRANE & RIGGING, INC	29	0	0%	0	0	--
HCI SYSTEMS, INC.	52	0	0%	0	0	--
HOEM & ASSOCIATES, INC	92	0	0%	0	0	--
HOSELEY CORPORATION	29,866	13,455	45%	3,474	3,458	100%
HOT LINE CONSTRUCTION, INC.	435	0	0%	74	0	0%
HOUSE CO. CONSTRUCTION	213	197	92%	69	69	100%
HS BRAR TRUCKING INC	17	0	0%	0	0	--
HVYW8 TRUCKING	1,482	342	23%	0	0	--
INTERSTATE CONCRETE PUMPING	156	0	0%	0	0	--
JB KIRTI INC. DBA JB KIRTI TRUCING	33	0	0%	0	0	--
JENSEN LANDSCAPE CONTRACTOR, LLC	24,375	0	0%	0	0	--
JOHN BERTOLDI INCORPORATED	2,072	660	32%	0	0	--
JOHN JACKSON MASONRY	873	0	0%	125	0	0%

LOCAL HIRING BY CONTRACTOR

PRIVATE DEVELOPMENTS ON CITY PROPERTY

JOSEPH J ALBANESE INC	113	19	17%	25	0	0%
KMF TRUCKING INC	98	98	100%	0	0	--
L & R TRUCKING LLC	17	0	0%	0	0	--
L C GENERAL ENGINEERING & CONSTRUCTION, INC.	17	0	0%	0	0	--
LEE'S IMPERIAL WELDING, INC	3,984	343	9%	877	0	0%
LEVEL 5 INC.	818	76	9%	151	76	50%
LIAS MECHANICAL	443	0	0%	77	0	0%
LIFFEY ELECTRIC	6,691	6,351	95%	508	508	100%
LOMBARDO DIAMOND CORE DRILLING CO., INC.	538	0	0%	71	0	0%
M. HERNANDEZ CONSTRUCTION, INC.	25	0	0%	0	0	--
MALCOLM DRILLING COMPANY, INC.	8,016	520	6%	417	0	0%
MALCOLM INTERNATIONAL LLC	2,721	0	0%	667	0	0%
MARELICH MECHANICAL	23,703	3,542	15%	7,268	1,808	25%
MARINSHIP DEVELOPMENT INTEREST LLC	510	0	0%	0	0	--
MCD TRUCKING LLC	182	0	0%	0	0	--
METAL DESIGN & STRATEGY, INC	8,331	1,569	19%	1,077	657	61%
MICHAEL O'SHAUGHNESSY CONSTRUCTION, INC.	128	79	61%	39	39	100%
MIKE O'DELL SURVEYS	2,281	325	14%	818	0	0%
MINERVA-GRANITEROCK JV	8,645	730	8%	34	0	0%
MISCELLANEOUS ARCHITECTURAL AND STRUCTURAL METALS INC.	678	0	0%	224	0	0%
MITCHELL ENGINEERING	83	22	27%	0	0	--
MITSUBISHI ELECTRIC US, INC.	15,699	9	0%	5,451	6	0%
MOLINA'S PAINTING & WALLCOVERING	9,291	986	11%	1,894	54	3%
NATIONAL AIR BALANCE CO.,INC.	19	0	0%	0	0	--
NETRONIX INTEGRATION INC	24	0	0%	0	0	--
NIBBI BROTHERS ASSOCIATES, INC.	611	307	50%	0	0	--
NMN CONSTRUCTION	10	0	0%	0	0	--
NORTH BAY OVERHEAD DOORS,INC.	58	0	0%	0	0	--
OM3 INC	11,557	1,276	11%	1,462	525	36%
OMNI SHEET METAL, INC.	47	0	0%	0	0	--
ONYX INSULATION COMPANY	77	0	0%	0	0	--
PACTUM CONSTRUCTION SERVICES	504	0	0%	0	0	--
PENINSULATORS, INC.	20	0	0%	0	0	--
PERFORMANCE CAULKING	1,263	54	4%	439	54	12%

LOCAL HIRING BY CONTRACTOR

PRIVATE DEVELOPMENTS ON CITY PROPERTY

PERFORMANCE CONTRACTING INC	2	0	0%	0	0	--
PERFORMANCE SWING STAGE, INC.	207	0	0%	0	0	--
PHILLIP'S DRAPERIES AND CURTAINS, INC. DBA PHILLIP'S DRAPERIES	705	0	0%	38	0	0%
PHOENIX ELECTRIC COMPANY	402	195	49%	9	5	50%
PICTURE PAINTING & DECORATING	4,862	2,636	54%	1,100	240	22%
PLANT CONSTRUCTION COMPANY, LP	521	14	3%	4	0	0%
PMR PACIFIC SEALANTS, LLC	1,800	442	25%	706	442	63%
PREMIER STONE AND TILE -	254	0	0%	29	0	0%
PRIORITY ARCHITECTURAL GRAPHICS	509	83	16%	96	59	61%
PROGRESS GLASS COMPANY INC	990	506	51%	227	187	82%
RANGER PIPELINES, INC	9,228	1,750	19%	744	233	31%
RANSOME COMPANY	124	0	0%	108	0	0%
RED DIPPER, INC.	3,050	328	11%	1,149	223	19%
RFJ MEISWINKEL COMPANY	685	14	2%	247	0	0%
RONAN CONSTRUCTION, INC.	94	94	100%	12	12	100%
ROYAL GLASS COMPANY, INC.	121	0	0%	42	0	0%
RT WESTERN INC.	715	435	61%	105	94	90%
RUBECON GENERAL CONTRACTING, INC.	72	72	100%	0	0	--
SAN FRANCISCO CONCRETE SCANNING & CORING	40	15	39%	0	0	--
SAN FRANCISCO INTERIORS	6	0	0%	0	0	--
SAN FRANCISCO POWER	890	872	98%	0	0	--
SANDIS CIVIL ENGINEERS SURVEYORS PLANNER.	108	0	0%	19	0	0%
SCAFFOLD SOLUTIONS, INC.	556	98	18%	138	69	50%
SERVICE METAL PRODUCTS	94	0	0%	8	0	0%
SHEEDY DRAYAGE CO	94	2	2%	14	0	0%
SHERA TRANSPORT INC	19	0	0%	0	0	--
SHILLINGSBURG VENTURES, DBA REBARBER ENTERPRISES	30	10	35%	0	0	--
SIDHU KK TRUCKING	14	0	0%	0	0	--
SIERRA BUILDING MAINTENANCE	3,001	20	1%	20	20	100%
SIERRA TRAFFIC MARKINGS INC.	16	0	0%	5	0	0%
SILVERADO CONTRACTORS, INC.	1,499	8	1%	223	0	0%
SMOKE GUARD CALIFORNIA, INC.	21	0	0%	6	0	0%
SOUTHEAST ELECTRICAL CONTRACTOR, INC	2,146	1,314	61%	118	118	100%
SPECIALTIES ETC..	680	235	35%	197	0	0%

LOCAL HIRING BY CONTRACTOR

PRIVATE DEVELOPMENTS ON CITY PROPERTY

SMOKE GUARD CALIFORNIA, INC.	21	0	0%	6	0	0%
SOUTHEAST ELECTRICAL CONTRACTOR, INC	2,146	1,314	61%	118	118	100%
SPECIALTIES ETC..	680	235	35%	197	0	0%
SPECIALTIES, ETC. CORP	32	32	100%	0	0	--
SPENCER MASONRY	1,674	139	8%	24	0	0%
SUMMIT STEEL WORKS CORP	2,120	61	3%	343	24	7%
SUPERIOR AUTOMATIC SPRINKLER CO	58	0	0%	29	0	0%
SUPERIOR CORING & CUTTING INC.	88	0	0%	0	0	--
SWINERTON BUILDERS - NORTHERN CA	49,499	10,050	20%	10,111	1,864	18%
SYSERCO INC	714	28	4%	32	0	0%
TAP MASTER, INC	5	0	0%	0	0	--
TEAM NORTH CONSTRUCTION SERVICES INC.	1,303	28	2%	0	0	--
TEMPER INSULATION CO.,INC.	4,013	2,053	51%	750	430	57%
THE DOOR CREW, INC.	163	17	10%	20	0	0%
THE HERRICK CORPORATION	20	0	0%	0	0	--
TP WINDOWS, INC. DBA SF WINDOW FACTORY	68	36	53%	36	36	100%
TRANSPACIFIC STEEL,LLC	11,677	88	1%	1,939	80	4%
U.S. PERMA, INC. DBA CALIFORNIA TILE INSTALLERS	152	0	0%	15	0	0%
US GLASS & ALUMINUM	2,786	24	1%	1,288	0	0%
VALDEZ PAINTING	2,929	64	2%	412	46	11%
VALLEY WATERPROOFING, INC.	3,271	188	6%	276	188	68%
VAN MULDER SHEET METAL, INC.	5,573	229	4%	491	32	7%
WALTERS & WOLF GLASS	7,691	280	4%	641	0	0%
WATERWORKS INDUSTRIES, INC.	286	80	28%	0	0	--
WEBCOR BUILDERS	27,722	6,818	25%	343	93	27%
WEBCOR CARPENTRY, A DIVISION OF WEBCOR CRAFT, L.P.	13,738	921	7%	4,437	913	21%
WEBCOR CONCRETE, A DIVISION OF WEBCOR CRAFT, L.P.	57,254	9,224	16%	9,783	5,445	56%
WEBCOR DRYWALL, A DIVISION OF WEBCOR CRAFT, L.P	45,109	1,926	4%	2,661	945	35%
WHITE WATER PLUMBING, INC.	441	194	44%	194	194	100%
YADEJS, INC.	876	644	74%	0	0	--
YOLANDA'S CONSTRUCTION MANAGEMENT AND TRAFFIC CONTROL	389	389	100%	0	0	--



CITYBUILD ACADEMY & CAPSA

CityBuild Academy aims to meet the demands of the construction industry by providing comprehensive pre-apprenticeship and construction administration training to San Francisco residents. The Academy offers a 12-week pre-apprenticeship and construction skills training program at the City College of San Francisco, Evans Campus. Trainees learn college level math while learning foundational skills, obtaining industry-recognized certifications, and gaining knowledge to enter the construction trades as successful new apprentices. Graduates also obtain an MC3 (Multi-Craft Core Curriculum) Certification, a nationally recognized certificate offered through the curriculum from the North America's Building Trades Unions. Since 2006, 1,617 San Francisco residents have graduated from CityBuild Academy and special trainings, and 1,400 graduates have secured employment in various construction trades. Through the Construction Administration and Professional Services Academy (CAPSA) 236 graduates have attained permanent employment in the construction industry.

ACKNOWLEDGMENTS

THE OFFICE OF MAYOR LONDON N. BREED

SAN FRANCISCO BOARD OF SUPERVISORS

Connie Chan, District 1

Catherine Stefani, District 2

Aaron Peskin, Board President, District 3

Joel Engardio, District 4

Dean Preston, District 5

Matt Dorsey, District 6

Myrna Melgar, District 7

Rafael Mandelman, District 8

Hillary Ronen, District 9

Shamann Walton, District 10

Ahsha Safaí, District 11

CITY & COUNTY OF SAN FRANCISCO CITY AGENCIES

Office of the City Administrator

Office of the City Attorney

Office of Community Investment and Infrastructure

Office of the Controller

Port of San Francisco

San Francisco Adult Probation Department

San Francisco Department of the Environment

San Francisco Human Rights Commission

San Francisco International Airport

San Francisco Municipal Transportation Agency

San Francisco Public Defender's Office

San Francisco Public Utilities Commission

San Francisco Public Works

San Francisco Recreation and Parks

San Francisco Sheriff's Office

CITYBUILD TRAINING PARTNERSHIPS

City College of San Francisco

Bay Area Plastering Industry Joint Apprenticeship
Training Committee

Cement Mason Pre-Apprenticeship Training Program

International Union of Painters and Allied Trades

District Council 16

IBEW Local 6 San Francisco Joint Apprenticeship and
Training Committee

Ironworkers Local 377

Nor Cal Carpenters Union

Northern California District Council of Laborers

North America's Building Trades Unions

Northern California Laborers' Training Center

Operating Engineers Local 3

San Francisco Building and Construction Trades
Council

UA Local 38 Joint Apprenticeship and Training
Committee

ACKNOWLEDGMENTS

LABOR ORGANIZATIONS

Bricklayers, Tilesetters and Allied Craftworkers Local 3
Cement Masons Local 300
Drywall Lathers Local 68L
International Brotherhood of Electrical Workers Local 6
International Union of Elevator Constructors Local 8
IATSE Local 16
IFTPE Local 21
LiUNA! Laborers' Local 261
LiUNA! Laborers' Local 67
Nor Cal Carpenters Union Local 22
Operating Engineers Local 3
Pile Drivers Local 34
Plasterers and Shophands Union Local 66
Teamsters Local 665
Plasterers and Shophands Union Local 66
Teamsters Local 665
Roofers and Waterproofers Local 40
San Francisco Labor Council
SEIU-USWW
Sign and Display Local 510
Sheet Metal Workers' Local 104
UNITE HERE Local 2
United Association Local 38, Plumbers & Pipefitters

COMMUNITY PARTNERS

Aboriginal Blackman United
A. Philip Randolph Institute
Anders and Anders Foundation
Brightline Defense Project
Charity Cultural Services Center
Chinese for Affirmative Action
Community Youth Center of San Francisco
Five Keys Schools and Programs
Inner City Youth
Mission Hiring Hall
One Treasure Island
San Francisco Giants/Mission Rock Partners
University of California, San Francisco
Young Community Developers, Inc.

CONTRACTOR ASSOCIATIONS

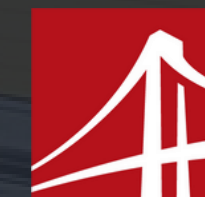
Associated General Contractors
Construction Employers' Association
United Contractors
Wall and Ceiling Alliance

PHOTOGRAPHY

Port of San Francisco
San Francisco International Airport
San Francisco Municipal Transportation Agency
San Francisco Public Utilities Commission
San Francisco Public Works
San Francisco Recreation and Park Department
BOK Modern
San Francisco YIMBY

OFFICE OF ECONOMIC AND WORKFORCE DEVELOPMENT

Sarah Dennis-Phillips, Executive Director
Ken Nim, Interim Director of Workforce Development
and CityBuild Director



SAN FRANCISCO
OFFICE OF ECONOMIC &
WORKFORCE DEVELOPMENT