

# TREASURE ISLAND

ARTS COMMISSION PRESENTATION

## TREASURE ISLAND STAGE 2 UTILITY ENCLOSURE

3/18/2024

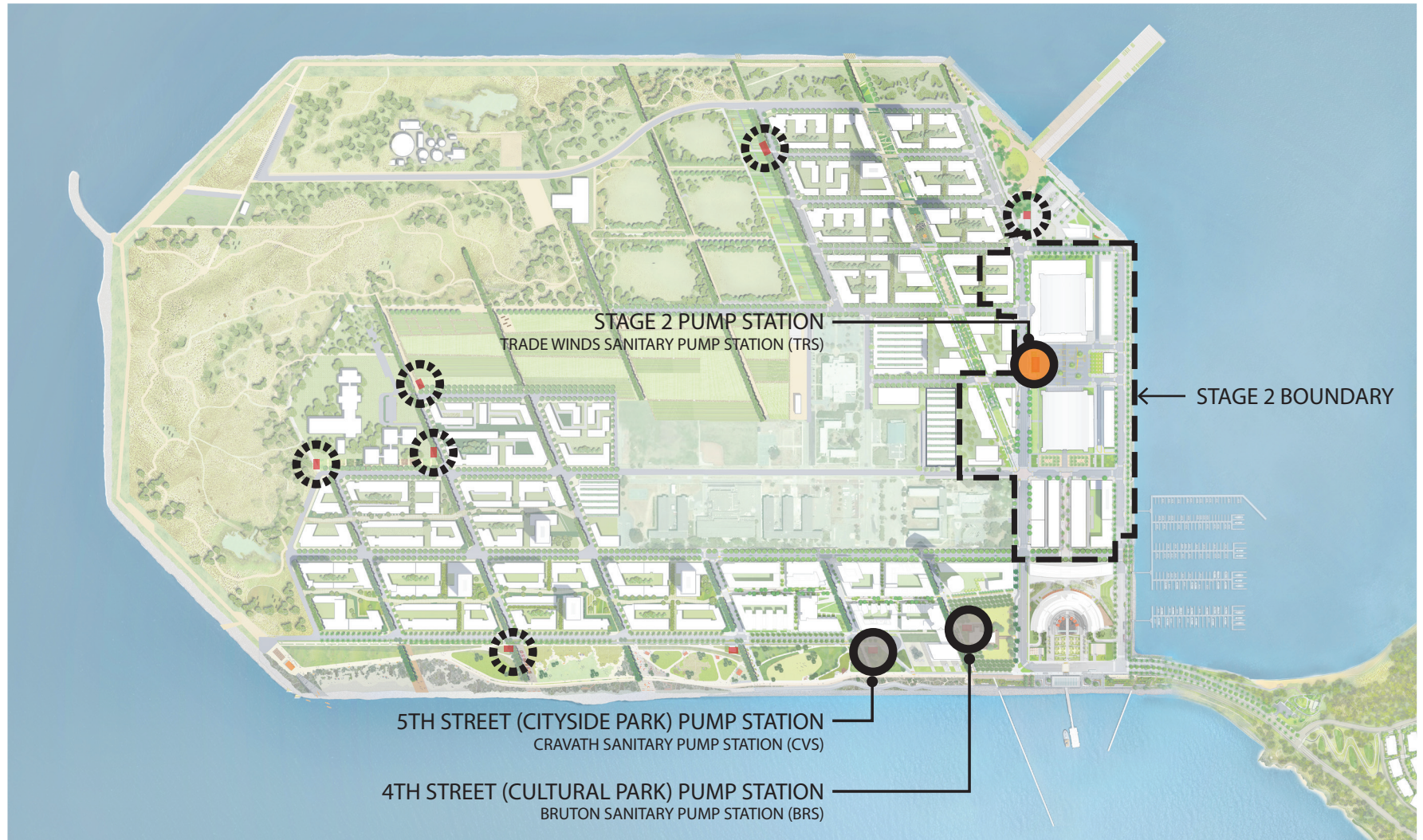


# TREASURE ISLAND STAGE 2 & 3





# UTILITY ENCLOSURE/PUMP STATION LOCATIONS



● STAGE 2 FACILITY

● PHASE 1 FACILITY

○ FUTURE PHASE FACILITY

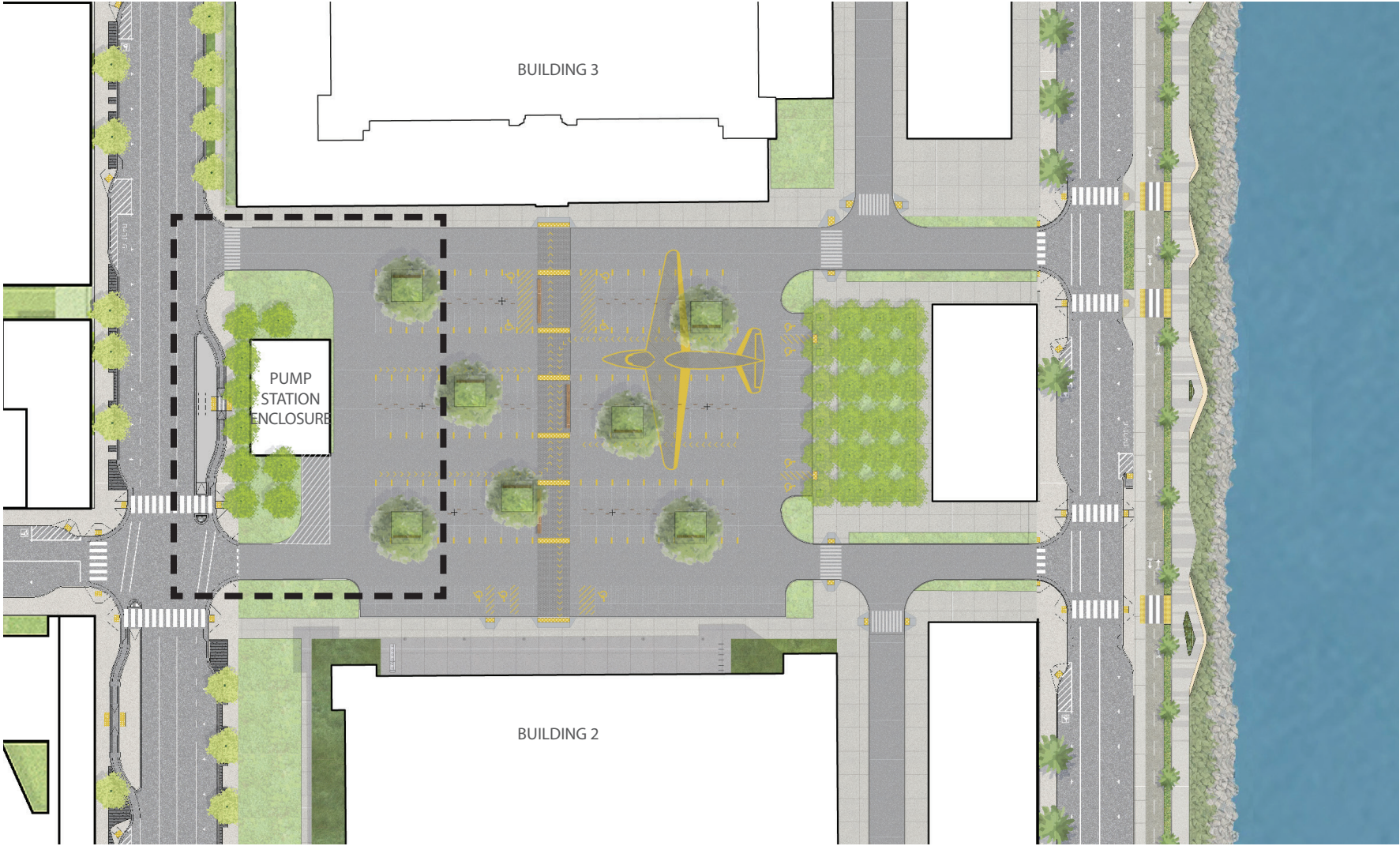


# STAGE 2 BUILDING 2 AND BUILDING 3 PLAZAS



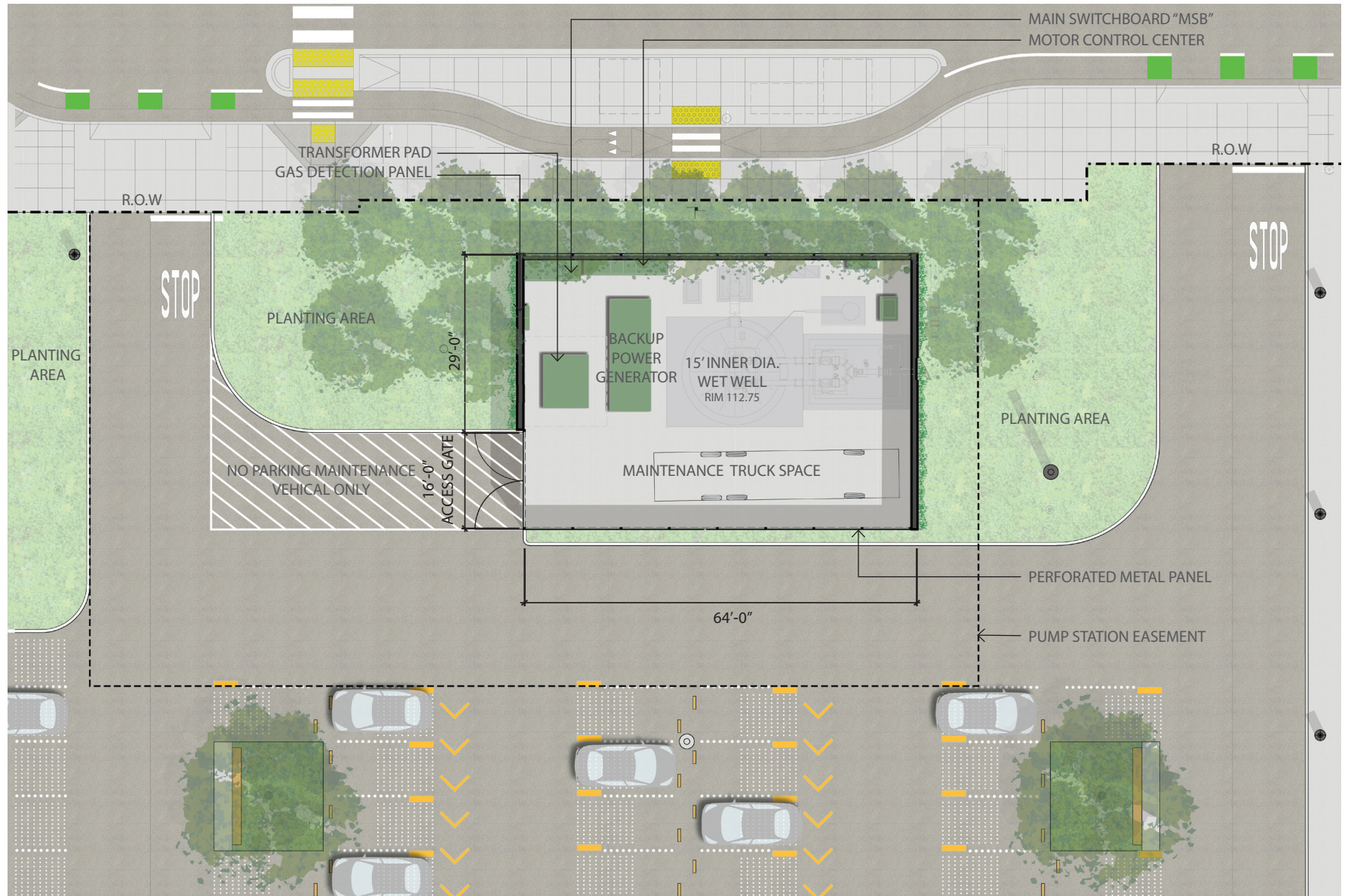


# STAGE 2 UTILITY ENCLOSURE SITE PLAN





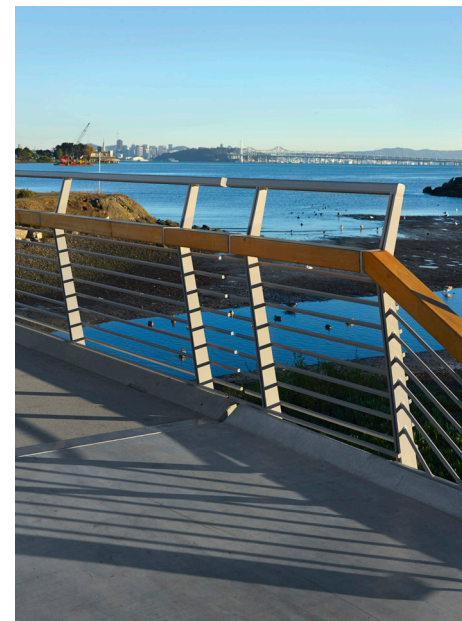
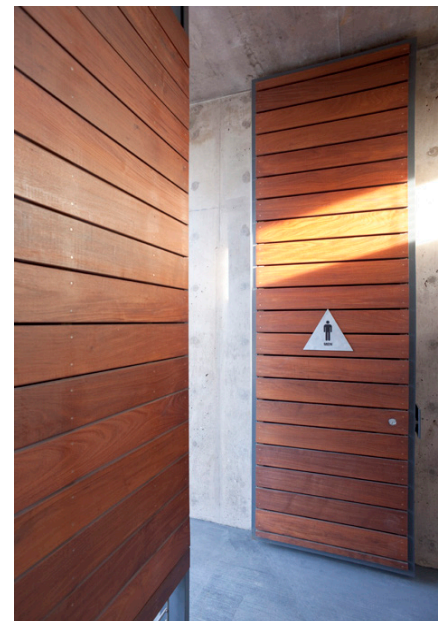
# STAGE 2 UTILITY ENCLOSURE SITE PLAN







**WARE**  
architecture  
engineering





# STAGE 2 UTILITY ENCLOSURE SITE CONTEXT





# STAGE 2 UTILITY ENCLOSURE MATERIAL PALETTE





# STAGE 2 UTILITY ENCLOSURE PERSPECTIVE





# STAGE 2 UTILITY ENCLOSURE PERSPECTIVE



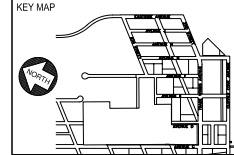
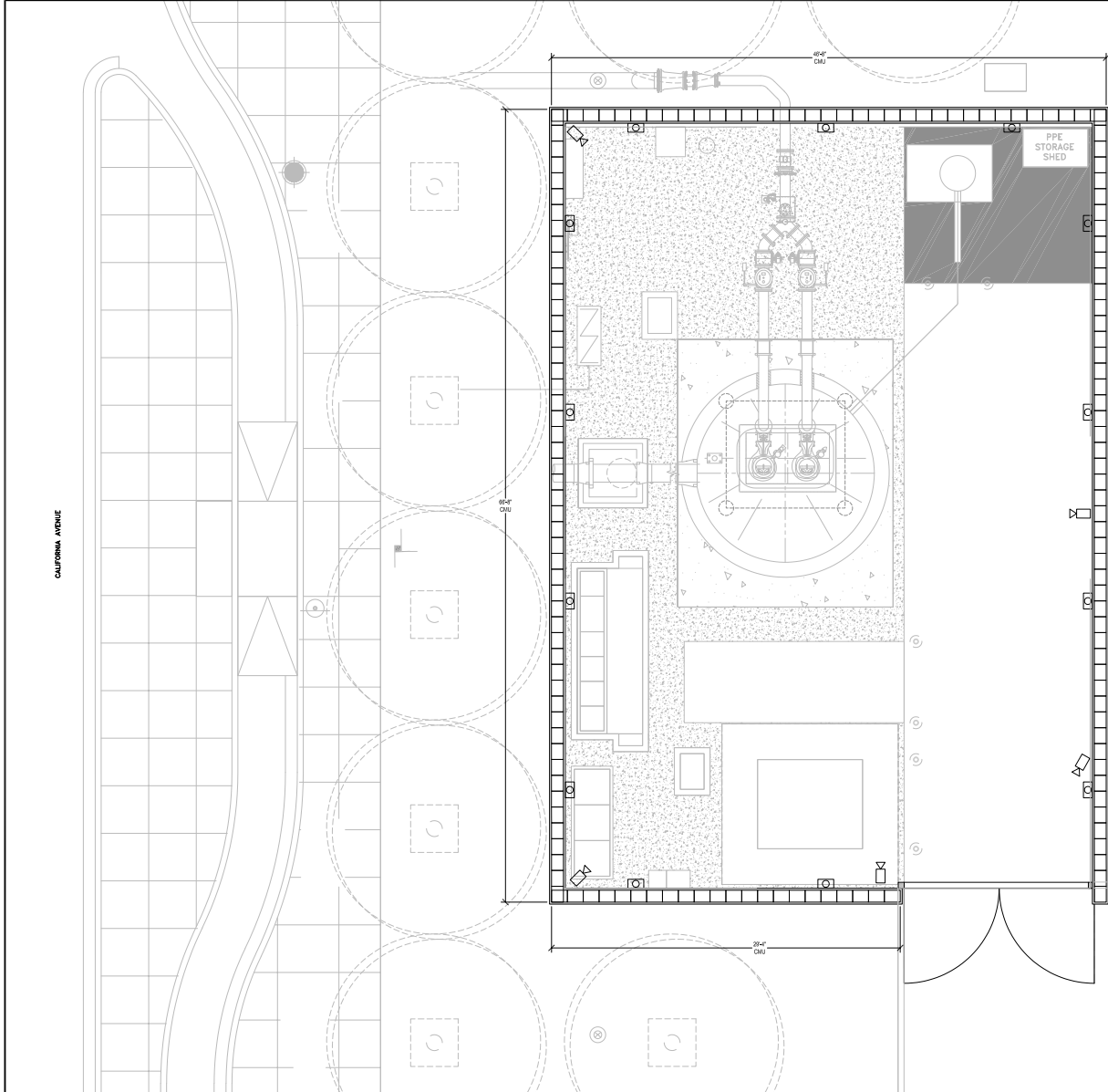


STAGE 2 UTILITY ENCLOSURE PERSPECTIVE



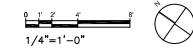
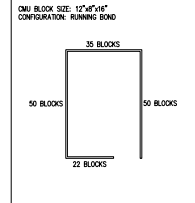


# STAGE 2 UTILITY ENCLOSURE PLAN



**SITE PLAN SCHEDULE**

SITE ELEMENT		
SYMBOL	KEY	NAME
	S1	PLASTER FINISH CMU WALL
	S4	METAL ENCLOSURE SWING GATE
LIGHTING / ELECTRICAL		
SYMBOL	KEY	NAME
	E1	ENCLOSURE LIGHT
	E2	1'00" TO CITY CONTROL BOX



PLANT NORTH TO BE USED BY SFPUC WVE FOR OPERATING LOCATION CODES (OLC)



PROGRESS SET  
NOT FOR CONSTRUCTION

LICENSE STAMP

TREASURE ISLAND DEVELOPMENT AUTHORITY  
**TREASURE ISLAND TRADE WINDS SANITARY PUMP STATION (TR5) PLANS**  
CITY AND COUNTY OF SAN FRANCISCO CALIFORNIA 94130

**PUMP STATION**

PERMIT SUBMITTAL

NO.	DATE	BY	CHK
1	02/22/2024		
REVISIONS			

PUMP STATION ENCLOSURE - PLAN

SHEET TITLE

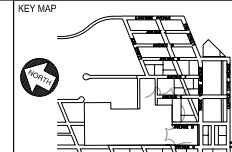
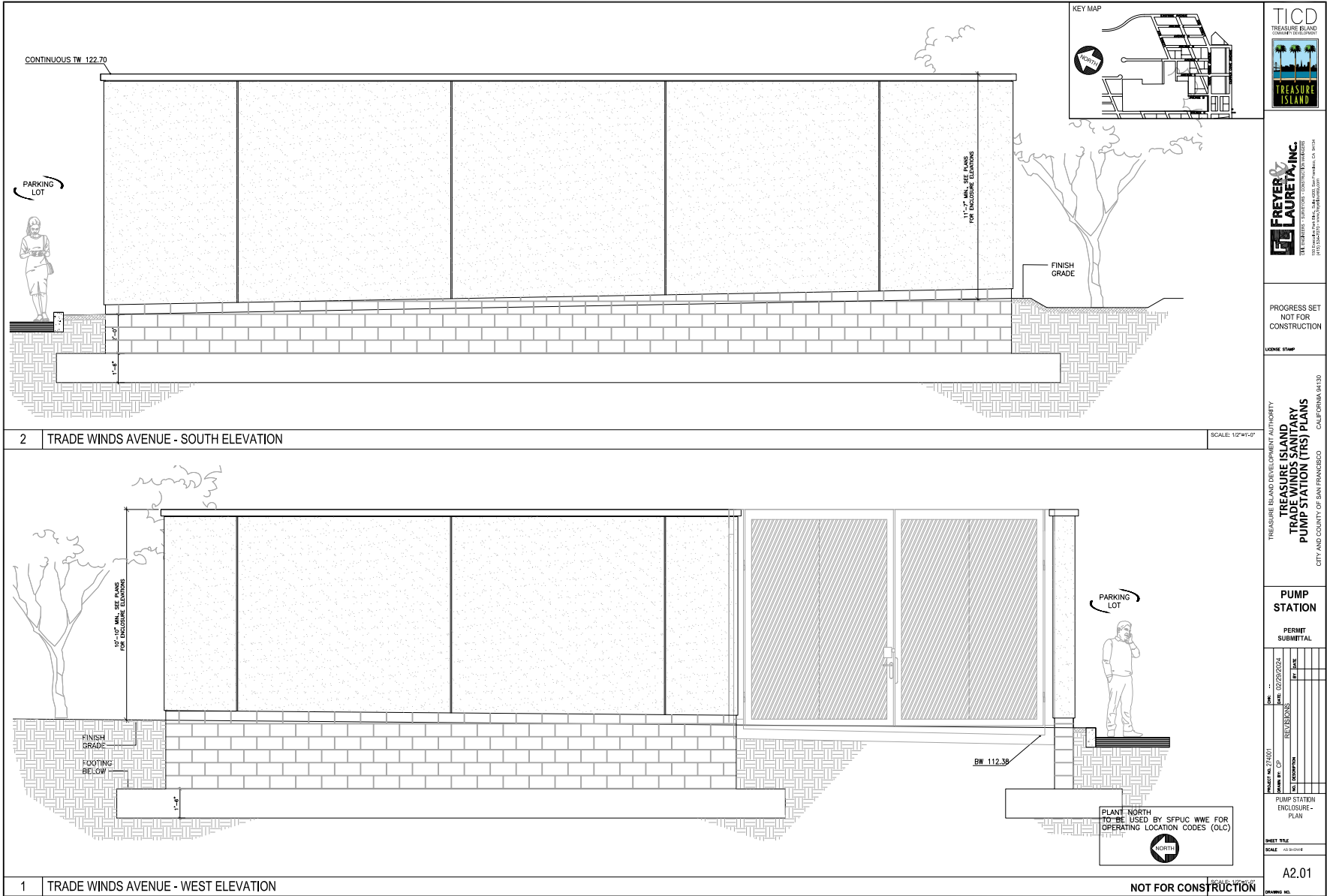
SCALE: AS SHOWN

NOT FOR CONSTRUCTION

A1.02  
DRAWING NO.



# STAGE 2 UTILITY ENCLOSURE ELEVATIONS



**LAURETIA INC.**  
 ARCHITECTS  
 1000 4th Ave. Ste. 400, San Francisco, CA 94104  
 415.774.2020

PROGRESS SET  
 NOT FOR  
 CONSTRUCTION

LICENSE STAMP

TREASURE ISLAND DEVELOPMENT AUTHORITY  
**TREASURE ISLAND  
 TRADE WINDS SANITARY  
 PUMP STATION (TWS) PLANS**  
 CITY AND COUNTY OF SAN FRANCISCO  
 CALIFORNIA 94108

**PUMP  
 STATION**

PERMIT  
 SUBMITTAL

NO.	DATE	DESCRIPTION
1	02/22/2024	REVISIONS

PROJECT NO. 25001  
 DRAWN BY: J.P.  
 CHECKED BY: J.P.  
 DATE: 02/22/2024

PUMP STATION  
 ENCLOSURE -  
 PLAN

SHEET TITLE  
 SCALE: AS SHOWN

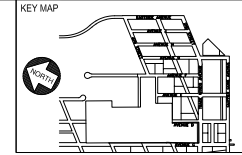
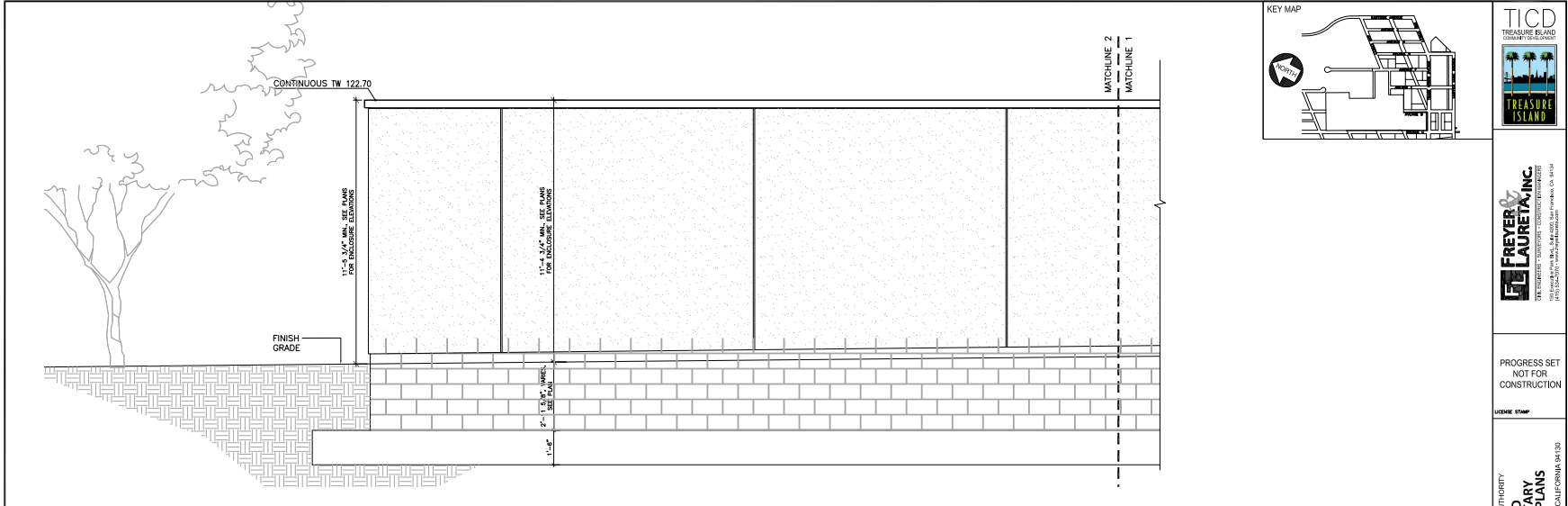
A2.01

DRAWING NO.



# STAGE 2 UTILITY ENCLOSURE ELEVATIONS

HOUSING EXECUTIVE DIRECTIVE 13-01/17-02: TOP PRIORITY PROCESSING



**FREYER & LAURETANO, INC.**  
 CIVIL ENGINEERS - SANITARIAN - CONSTRUCTION ADMINISTRATOR  
 1015 CALIFORNIA AVENUE, SUITE 1000, SAN FRANCISCO, CA 94108  
 TEL: 415.774.1111 FAX: 415.774.1112

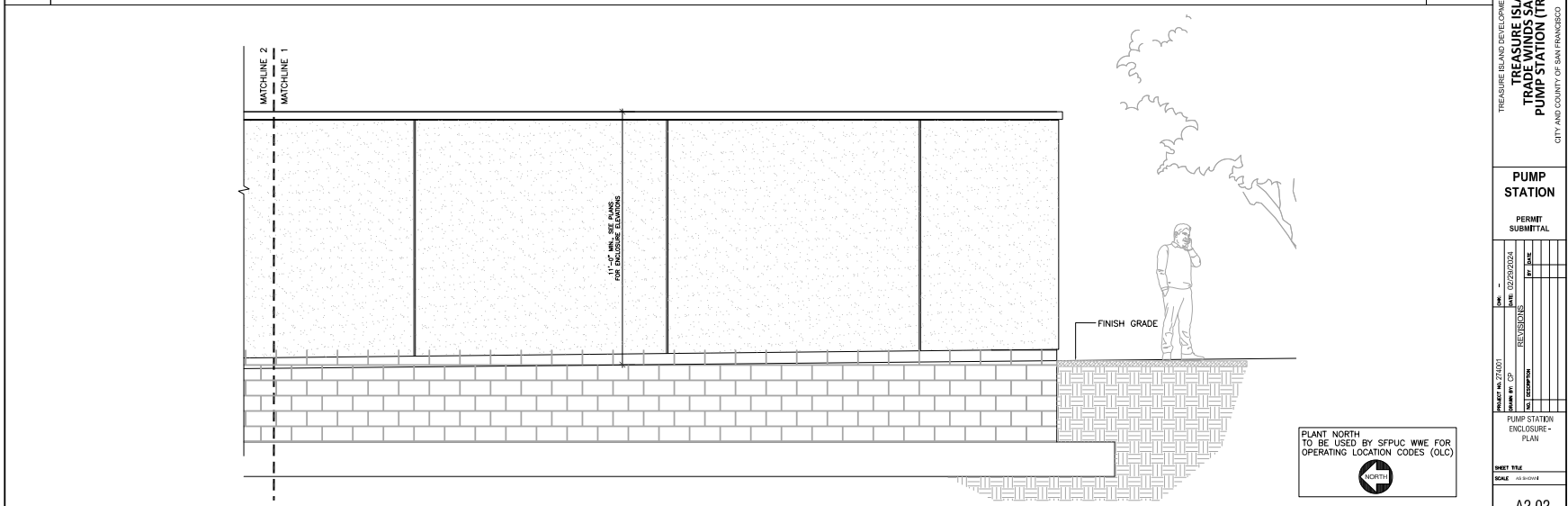
PROGRESS SET  
 NOT FOR  
 CONSTRUCTION

LICENSE STAMP

TREASURE ISLAND AND DEVELOPMENT AUTHORITY  
**TREASURE ISLAND  
 TRADE WINDS SANITARY  
 PUMP STATION (TRS) PLANS**  
 CALIFORNIA 94130

2 TRADE WINDS AVENUE - NORTH ELEVATION

SCALE: 1/2"=1'-0"



TREASURE ISLAND AND DEVELOPMENT AUTHORITY  
**TREASURE ISLAND  
 TRADE WINDS SANITARY  
 PUMP STATION (TRS) PLANS**  
 CITY AND COUNTY OF SAN FRANCISCO

**PUMP  
 STATION**

PERMIT  
 SUBMITTAL

DATE	02/25/2024
REVISIONS	
NO.	DATE
1	02/25/24
2	
3	
4	
5	
6	
7	
8	
9	
10	
11	
12	
13	
14	
15	
16	
17	
18	
19	
20	
21	
22	
23	
24	
25	
26	
27	
28	
29	
30	
31	
32	
33	
34	
35	
36	
37	
38	
39	
40	
41	
42	
43	
44	
45	
46	
47	
48	
49	
50	

PUMP STATION  
 ENCLOSURE -  
 PLAN

SHEET TITLE

SCALE: AS SHOWN

1 TRADE WINDS AVENUE - NORTH ELEVATION

NOT FOR CONSTRUCTION

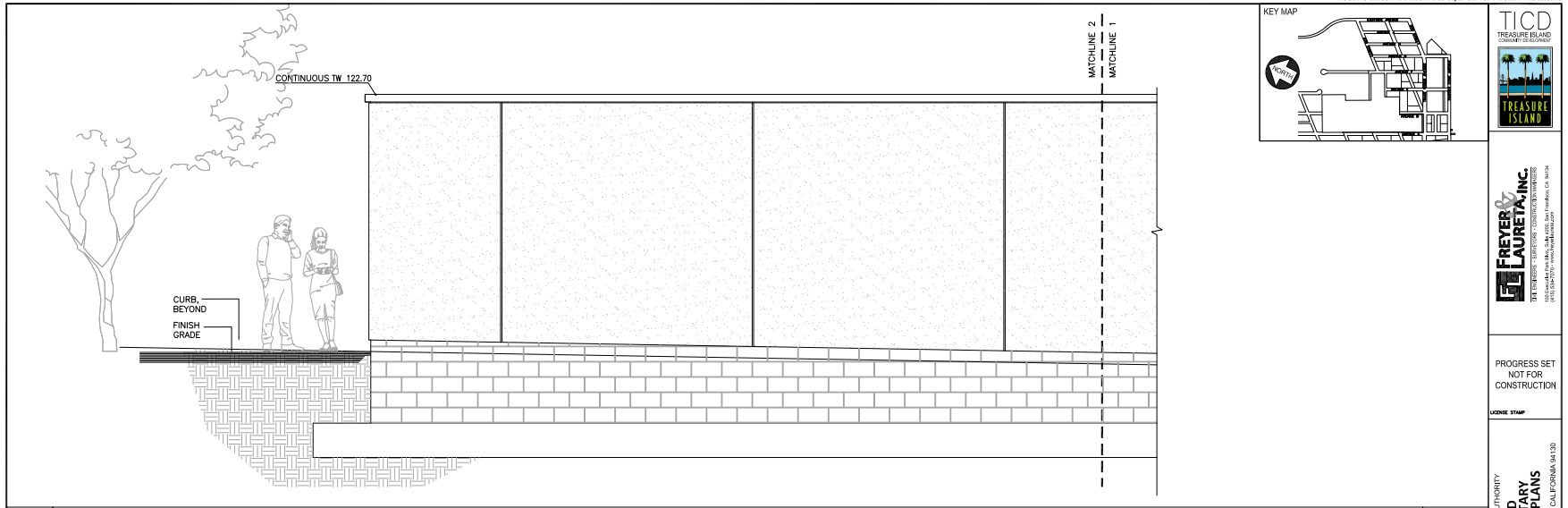
A2.02

DATE PLOTTED: 02/25/2024 10:58:00 AM



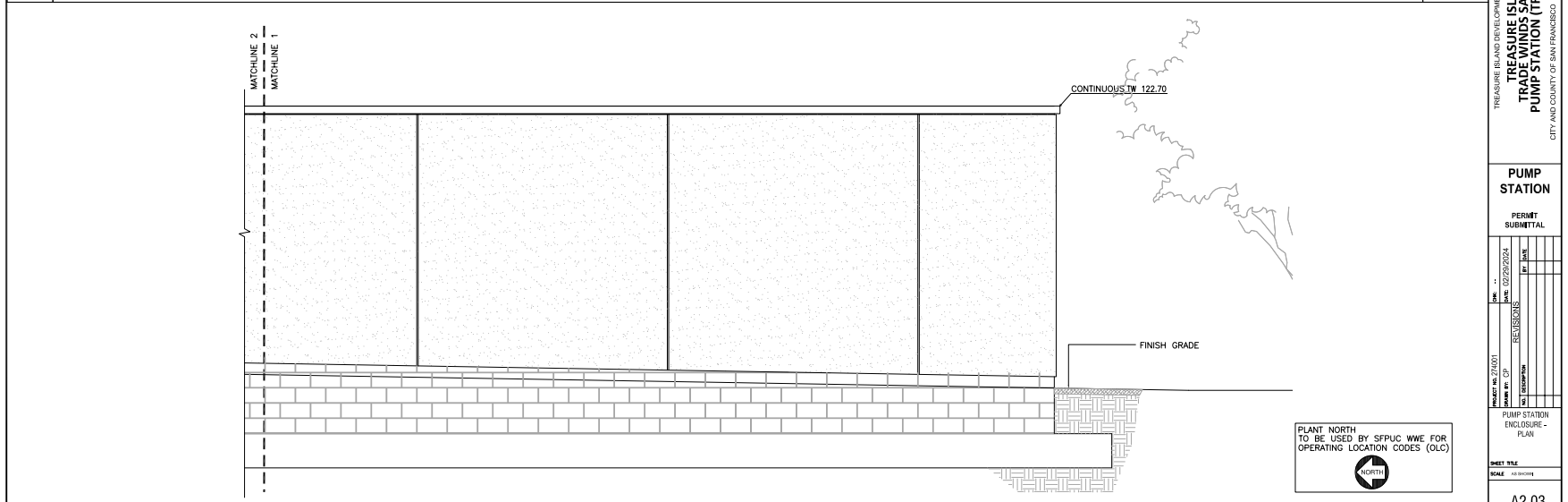
# STAGE 2 UTILITY ENCLOSURE ELEVATIONS

HOUSING EXECUTIVE DIRECTIVE 13-01/17-02: TOP PRIORITY PROCESSING



2 TRADE WINDS AVENUE - SOUTH ELEVATION

SCALE: 1/2"=1'-0"



1 TRADE WINDS AVENUE - SOUTH ELEVATION

PLANT NORTH  
TO BE USED BY SFPUC WVE FOR  
OPERATING LOCATION CODES (OLC)



PROGRESS SET  
NOT FOR  
CONSTRUCTION

LOGO: STAMP

TREASURE ISLAND DEVELOPMENT AUTHORITY  
TREASURE ISLAND  
TRADE WINDS AVENUE  
PUMP STATION (TWS) PLANS  
CITY AND COUNTY OF SAN FRANCISCO CALIFORNIA 94133

PUMP STATION

PERMIT  
SUBMITTAL

DATE	BY
02/28/2024	
REVISIONS	
NO	
DESCRIPTION	

PUMP STATION  
ENCLOSURE -  
PLAN

SHEET TITLE  
SCALE: AS SHOWN

A2.03

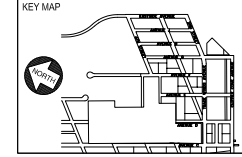
NOT FOR CONSTRUCTION

DRAWING NO.



# STAGE 2 UTILITY ENCLOSURE WALL SECTIONS

HOUSING EXECUTIVE DIRECTIVE 13-01/17-02: TOP PRIORITY PROCESSING



PROGRESS SET  
NOT FOR  
CONSTRUCTION

LICENSE STAMP

TREASURE ISLAND DEVELOPMENT AUTHORITY  
TREASURE ISLAND  
TRANSIT STATION  
PUMP STATION (TIS) PLANS  
CITY AND COUNTY OF SAN FRANCISCO CALIFORNIA 94130

PUMP  
STATION

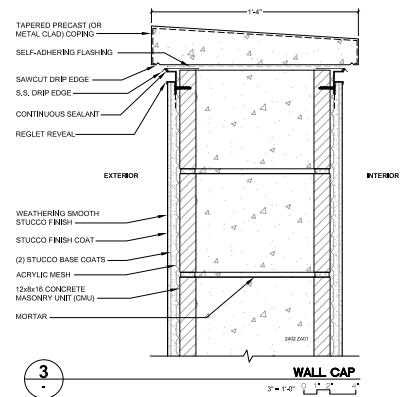
PERMIT  
SUBMITTAL

NO.	DATE	DESCRIPTION	BY	CHK
1	10/23/2024	REVISIONS		
2				
3				

PROJECT NO.	251001
DATE	10/23/2024
PROJECT NAME	TREASURE ISLAND TRANSIT STATION
PROJECT LOCATION	TREASURE ISLAND, SAN FRANCISCO, CA

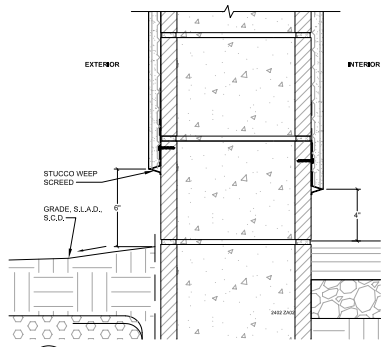
SHEET TITLE  
SCALE AS SHOWN

A4.01  
DRAWING NO.



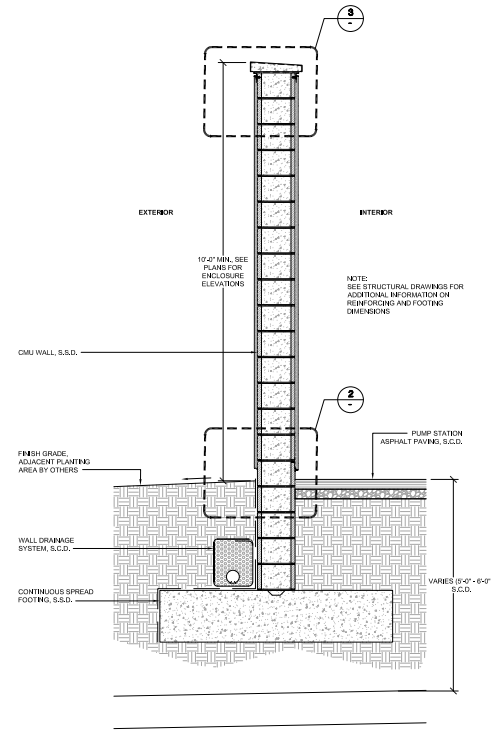
3

WALL CAP



2

WALL BASE



1

TYPICAL WALL SECTION



NOT FOR CONSTRUCTION





# STAGE 2 UTILITY ENCLOSURE MATERIALS



STONE OR PRECAST COPING

SMOOTH FINISH  
PLASTER - OFF WHITE

ALUMINUM CONTROL  
JOINTS AND REVEALS -  
"PLATINUM" FINISH

EXPOSED  
CMU BASE



THANK YOU





# APPENDIX



**HOHBACH-LEWIN, INC.** STRUCTURAL & CIVIL ENGINEERS

*"Timely Solutions Based On Timeless Principles"*

March 14, 2024

cmg Landscape Architecture  
444 Bryant Street,  
San Francisco, CA 94107

Project: Treasure Island Trade Winds Sanitary Pump Station (TRS) Plans  
Hohbach-Lewin Project No: 13016

Subject: Structural review on the proposed pump station enclosure

Dear Corbett Belcher,

Per your request, Hohbach-Lewin has reviewed the architectural drawings provided by Ware Associated and has determined the proposed 12" CMU wall for the pump station enclosure is structurally feasible.

The drawings that Hohbach-Lewin reviewed include: A1.02 (dated 02/23/2024), A2.01 (dated 02/29/2024), A2.20 (dated 02/29/2024), A2.03 (dated 2/29/2024), A3.01 (dated 2/23/2024), and A4.01(dated 2/23/2024).

Hohbach-Lewin, Inc. will perform calculations/analysis to determine the size of the rebars and spacing required in the CMU wall, and the size and rebars requirement of the footings supporting the CMU walls. This analysis will not have any effect on the aesthetic appearance of the pump station enclosure shown on these architectural drawings mentioned above. The size of the footings shown on these architectural drawings will be adjusted based on the analysis; they are embedded below finished grade and again will have no effect on the aesthetic appearance of the enclosure presented in the architectural drawings.

PRINCIPALS:

DOUGLAS HOHBACH S.E.  
DAN LEWIN S.E.  
JOAQUIM ROBERTS S.E.  
ANTHONY LEE S.E.  
SAM SHIOTANI S.E.  
LES TSO S.E.  
KEVIN MORTON S.E.

ASSOCIATE PRINCIPALS:

STUART LOWE S.E.  
MICHAEL RESCH S.E.

SENIOR ASSOCIATES:

VICKY RUNDORFF S.E.  
GREG RODRIGUES S.E.  
EDDIE HUI S.E.  
STACY GADDINI S.E.

ASSOCIATES:

BRIAN HO S.E.  
PHYLLIS MAK S.E.  
MICHAEL MORGAN P.E.  
MOHAMED IBRAHIM S.E.  
MOLLY SOUKHASEUM S.E.  
BRENT CRAWFORD S.E.  
KYLE HAAS S.E.

SENIOR STRUCTURAL

ENGINEER  
CASEY PIEDRA S.E.

CE DEPT MANAGER:

BILL HENN

Please do not hesitate to contact me should you have any questions relating to this letter.

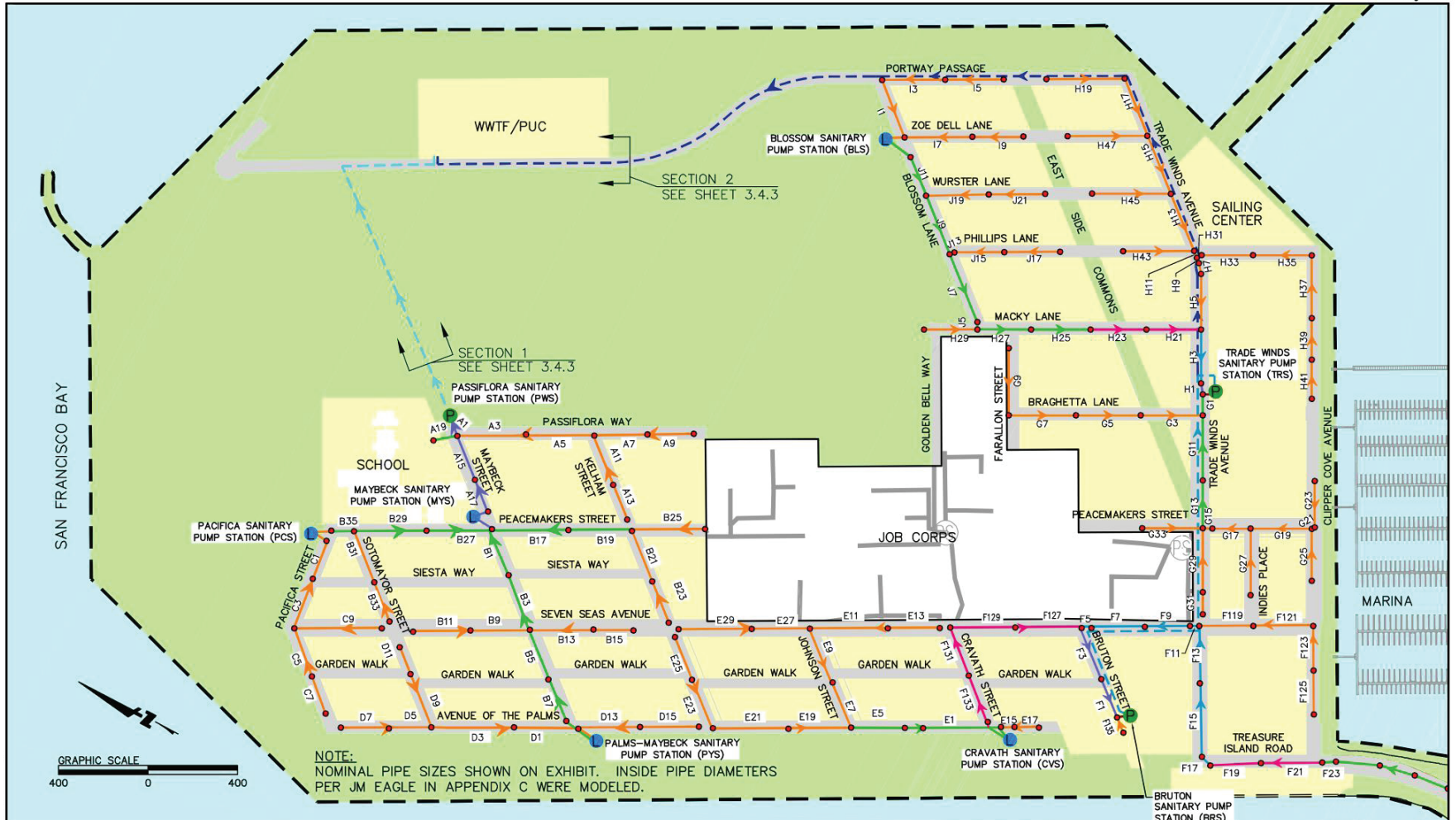
Sincerely,

Eddie Hui, S.E.  
Senior Associate  
[ehui@hobhach-lewin.com](mailto:ehui@hobhach-lewin.com)



# TREASURE ISLAND SANITARY SEWER MASTER PLAN (2020)

© BKF Engineers



NOTE:  
NOMINAL PIPE SIZES SHOWN ON EXHIBIT. INSIDE PIPE DIAMETERS  
PER JM EAGLE IN APPENDIX C WERE MODELED.

LEGEND	
	PROJECT BOUNDARY
	PARKS AND OPEN SPACE
	DEVELOPMENT PARCEL
	SS LIFT STATION
	SS PUMP STATION
	8-INCH SS MAIN
	12-INCH SS MAIN
	14-INCH SS MAIN
	16-INCH SS MAIN
	18-INCH SS MAIN
	20-INCH SS MAIN
	SS MANHOLE
	8" SS FORCE MAIN
	16" SS FORCE MAIN
	20" SS FORCE MAIN
	EX SS PUMP STATION
	EX SS PIPE

DATE: 07/17/20  
SCALE: 1"=400'  
DESIGN: LC  
DRAWN BY: LC  
APPROVED: EM  
JOB NO: 20140015

**TICDP** TREASURE ISLAND COMMUNITY DEVELOPMENT

**BKF** ENGINEERS | SURVEYORS | PLANNERS  
255 SHORELINE DRIVE SUITE 200  
REDWOOD CITY, CA 94065  
650/482-6300  
650/482-6399 (FAX)

TI/YBI REDEVELOPMENT  
SANITARY SEWER SYSTEM REVISED  
MASTER PLAN

FIGURE 3.3.1 – PROPOSED  
SANITARY SEWER PIPE SIZING

# **PUMP STATION LOCATION CONSTRAINTS**

- Limited by depth of gravity sewer main.

- Requires access from the right of way.

- Requires public parcel.

  - Locations determined in 2014-2015 and approved in the 2016 Master Utility Plans*

  - Mapped on the approved final map*

  - Easements on Trust Land were reserved from State Lands and accepted by the PUC.*

  - Documented in the permitted Street Improvement Plans (2016-2018)*

- Enclosure requirements determined in 2018



# **PUMP STATION DESIGN REQUIREMENTS**

- Size set by the clear working space and vehicular requirements of the utilities.
- Minimum of 10 feet tall.
- Non-scalable (maximum 2" openings).
- Strong, non-cuttable and durable in marine environment (no wood).
- Nighttime lighting for security (motion detector) and nighttime maintenance to be mounted to enclosure.
- Must not be accessible from adjacent trees.
- **NEW**- No transparency requirements provided security cameras and door contacts are provided.

# **PUMP STATION** DESIGN INTENT

Screen the Equipment Within

Enclosures should Recede into the Landscape

Utilize a Simple Material Palette with Clean Details

Create Simple Volumes that Don't Draw Attention to Themselves