

# Treasure Island Development Authority

## Item 8: Panorama Park & Signal Point on Yerba Buena Island – Acceptance



**March 13, 2024**



PANORAMA  
PARK  
INFINITY POINT

SIGNAL  
POINT

# Panorama Park & Signal Point Overview

---

- Acceptance Process
- Parks O&M Manual Review
- Interim Park Management Structure and Responsibilities
- Ongoing Parks Management Planning

# Panorama Park & Signal Point Acceptance Process

---

**February 2024** - San Francisco Board of Supervisors Ordinance 028-24 delegates to the Authority various powers related to acceptance of public parks and open space improvements

**March 7, 2024** – Notice of Completion (“NOC”) issued

**March 13, 2024** - TIDA Board of Directors to accept the parks and open space improvements and dedicate them for public use

# Panorama Park & Signal Point Opening

---

**March 2024** – Soft opening of the parks, after Yerba Buena Loop Road is opened

**May 2024** – Grand Opening event



# Panorama Park

---



# Signal Point

---



# TI/YBI Parks Operations and Maintenance Manual

---

## O&M Manual Goals:

- A comprehensive document defining system-wide and park specific requirements and guidelines.
- Defining individual 'Levels of Service' for each park based on location, program, and scale.
- Providing specific guidance for Management, Engineering, Landscape, Maintenance, and Janitorial Services.
- A 'living document' that is organized to accommodate future, phases parks and document updates.
- Structured so that it can be used for work orders, procurements and requests for proposals for services.



# TI/YBI Parks Operations and Maintenance Manual

---

Individual park chapters serve to further the Manual's goals by:

- Establishing technical levels of service tailored to each individual park, consistent with the intended use and design of the space.
- Providing guidance and direction on unique care and maintenance needs presented by an individual Park's unique elements
- Supporting TIDA's near-term contracting and budget projections for interim parks management with defined requirements and guidelines.

# TI/YBI Parks O&M Manual

## Panorama Park / Signal Point

---

- Park Overview and Design Intent
- Levels of Service
- Management
- Engineering
  - Utility systems
  - Paving
  - Site furnishings
- Landscape
- Janitorial
  - Metal Railings
  - Site furnishings



# Point of Infinity Artwork

---

## Care & Maintenance

- Funded from Parks Maintenance Budget
- SF Arts Commission provided Conservator's Report
- Specialized care instructions per Conservator's Report



# Interim Parks Management Structure

---

**TIDA-led, collaborative effort consistent with the O&M Manual and existing on-Island functional responsibilities.**

- **Management tasks:** Performed by TIDA staff.
- **Engineering tasks:** Performed by SF Public Works staff or contractors.
- **Landscape tasks:** Performed by Rubicon Landscape\*
- **Janitorial tasks:** Performed by Toolworks\*

\* One Treasure Island member organization



# Management

---

## Responsibilities include:

- Tracking and QA-QC of Landscaping and Engineering performance.
- Regular field monitoring of conditions to establish site priorities and identify adjustments.
- Data collection and reporting.
- Oversight of occasional small/medium events.
- Assure collaboration and proper communication amongst divisions.

# Engineering

---



## Tasks include:

- Regular inspection and assessment of paving, site furnishings, mechanical systems, utility service.
- Maintain functionality of systems and equipment.
- Remedy hazards and unsafe conditions.
- Perform or arrange for necessary repairs and replacements.
- Perform or arrange scheduled and as-needed systems inspections.
- “eyes and ears” for daily observations of damage, malfunctions and hazards.



# Landscape

---

## Tasks include:

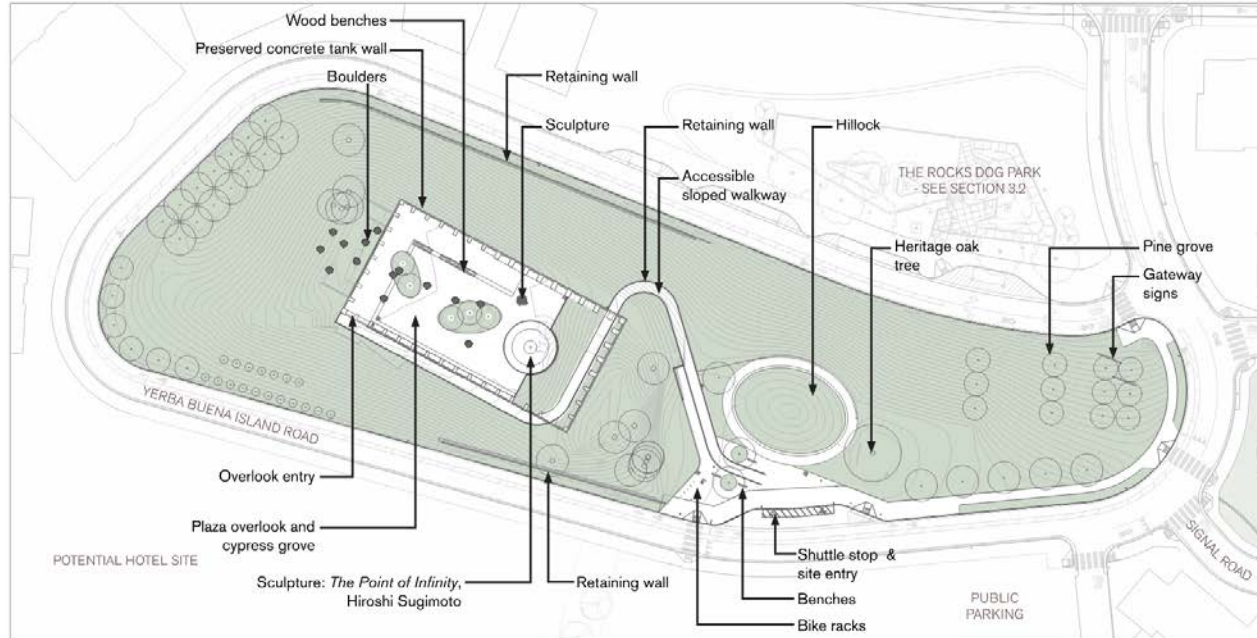
- Groundcover, plants, shrubs and tree care:
- Program, monitor and inspect irrigation system.
- Coordinate Integrated Pest Management activities as-needed.
- Maintain a neat and welcoming environment.
  - Empty waste containers.
  - Clean water fountains.
  - Remove litter leaf and blown trash.
  - “eyes and ears” for daily observations of facility damage or malfunctions.

# Janitorial



## Tasks:

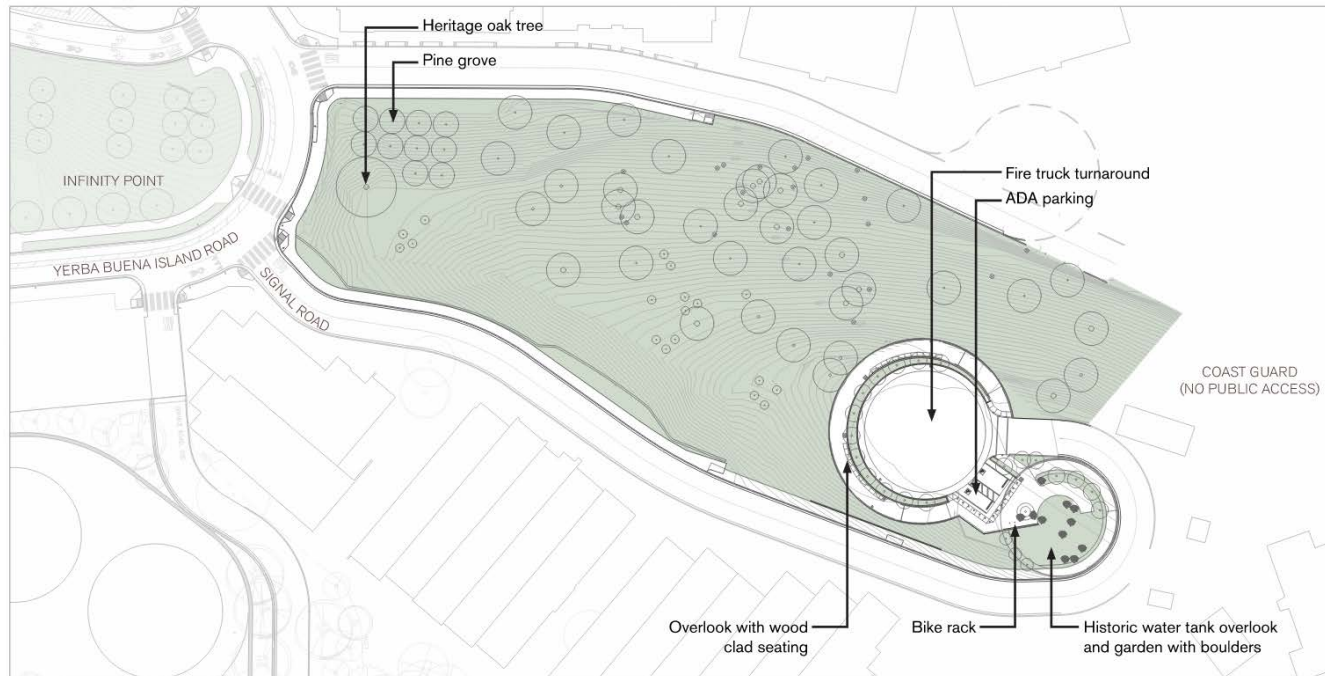
- Waste removal
- Spot cleaning of benches, fixtures, bike racks, railings
- Pressure washing concrete overlooks/salvage tanks





# Ongoing Parks Management Planning

- TIDA coordinated with SF Rec & Park & OCII to validate cost estimates for parks maintenance
- Parks maintenance cost is accounted for in budget



# Ongoing Parks Management Planning

---

- Analysis of structure and functions by experts in the fields of horticulture, parks management, ecology and integrated pest management will continue to guide TIDA and contractor actions.
- Regular and active monitoring, priority-setting, communication and flexibility of Frequency Schedules to assure TIDA standards for the park are being met.

# THANK YOU

---

