



RECREATION & PARKS DEPARTMENT  
**KEZAR PAVILION RENOVATION**

CIVIC DESIGN REVIEW | CONCEPTUAL | 03.18.2024 (HISTORIC PLANNING PRELIMINARY APPROVAL COMPLETED)

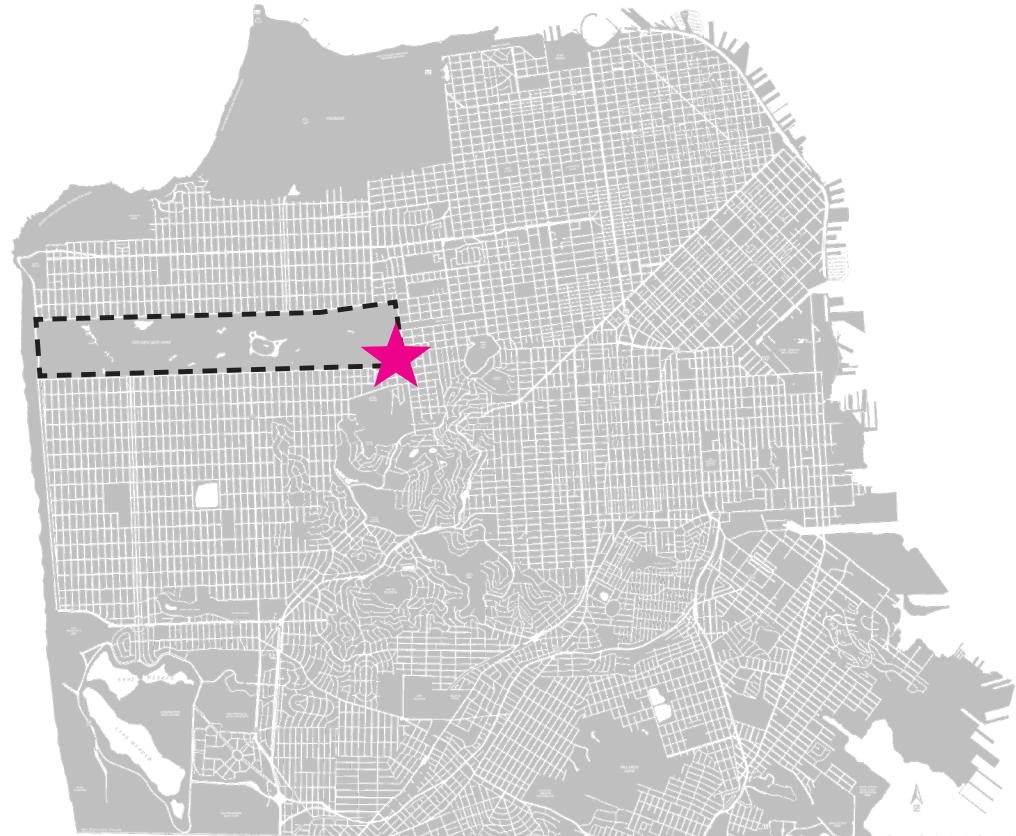


# PART 1

---

## Project Background

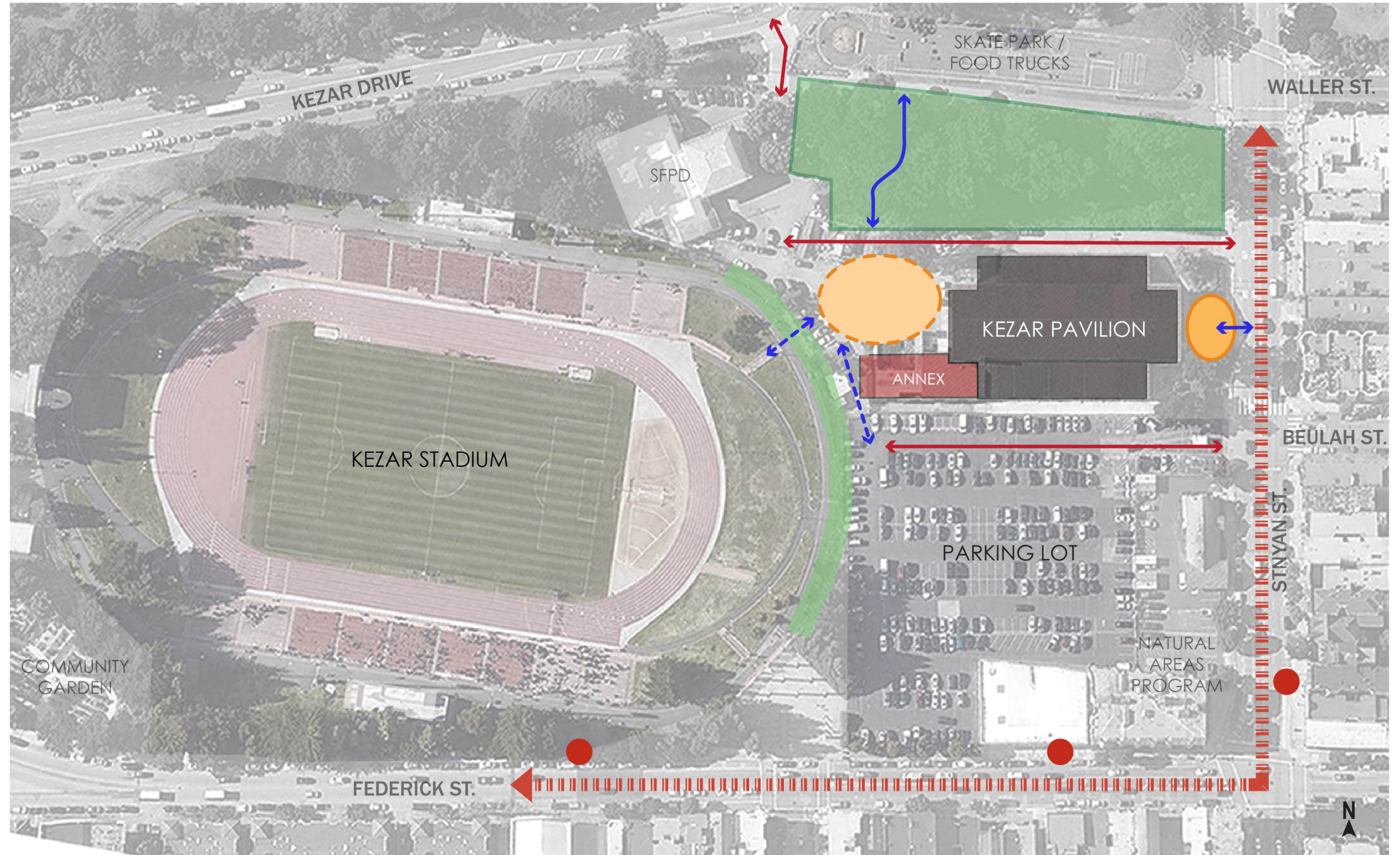
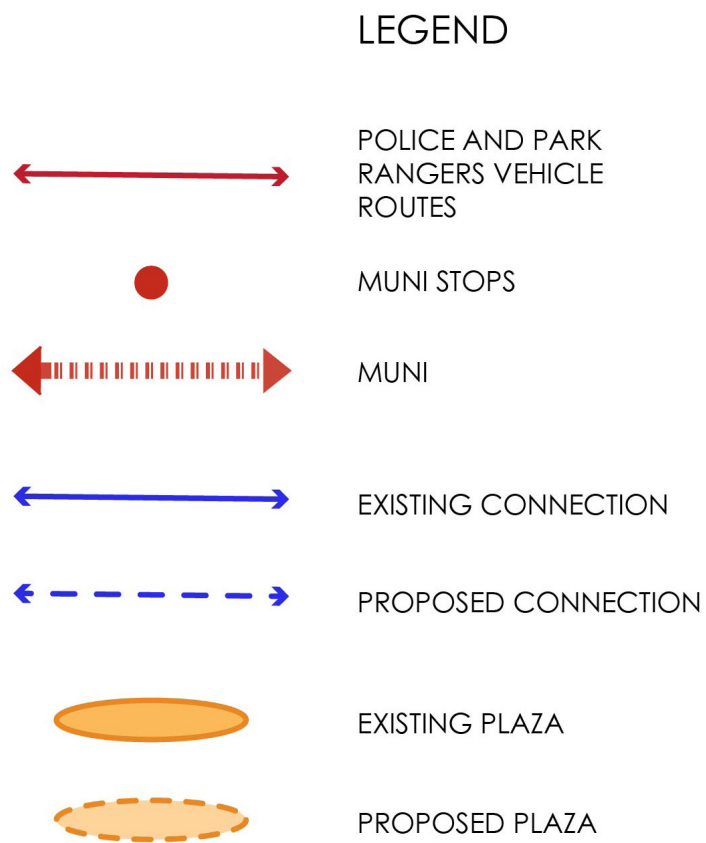
# PROJECT LOCATION



# SITE CONTEXT



# SITE ACCESS & OPPORTUNITIES



## MODIFICATIONS TO ORIGINAL BUILDING



## ANNEX ADDITIONS

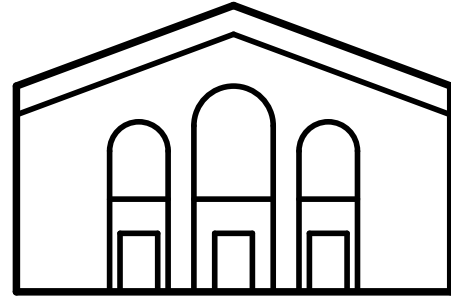


# PART 2

---

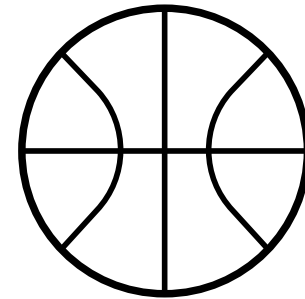
## Project Goals

# GUIDING PRINCIPLES



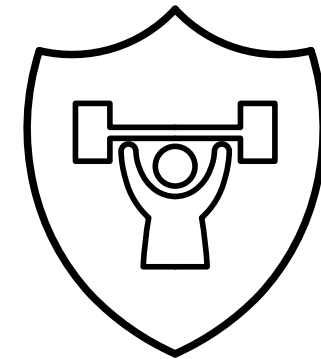
## RESPECT THE HISTORY OF KEZAR PAVILION

- Rehabilitate hundred year old building.
- Honor sports history.
- Strengthen underutilized connections to stadium.



## EXPAND USE AS A NEIGHBORHOOD REC CENTER

- Maintain citywide uses.
- Increase facility and program offerings.
- Provide fully accessible facilities.



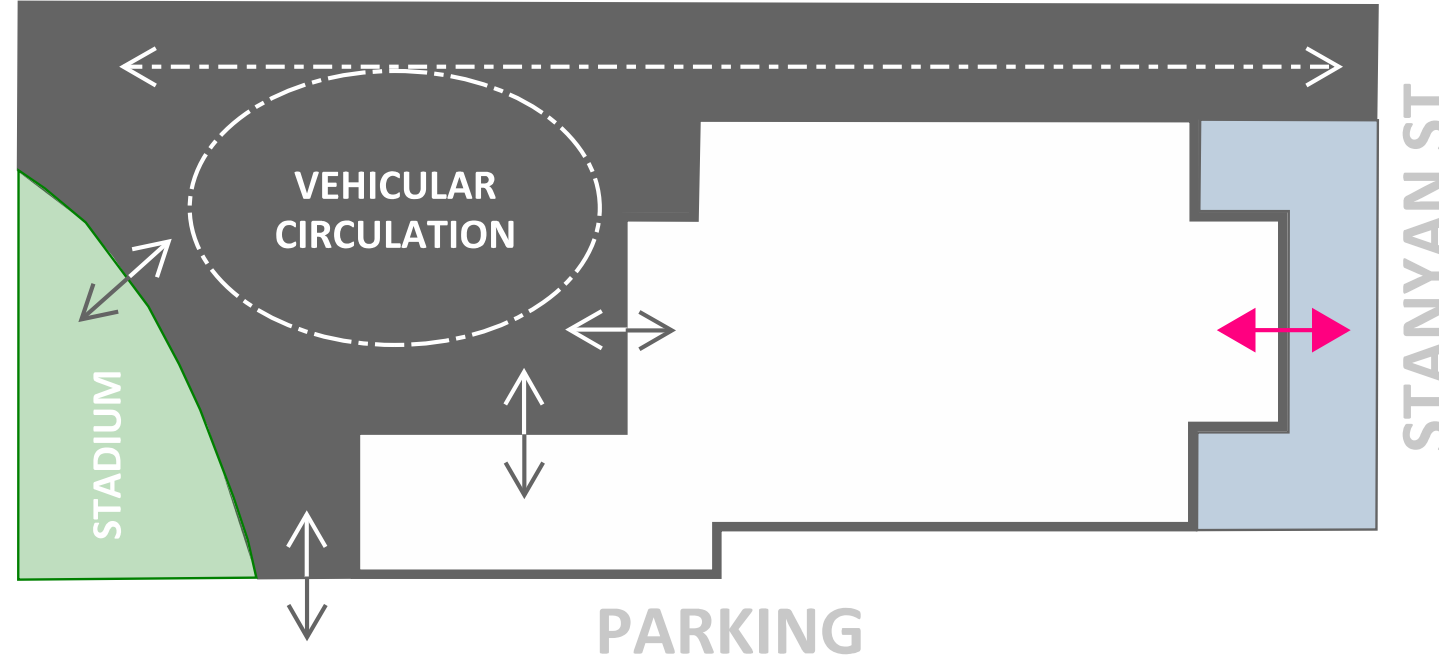
## IMPROVE PUBLIC SAFETY AND RESILIENCE

- Expand and modernize Park Rangers facilities.
- Create flexible indoor/outdoor space for emergency use.
- Focus on resilience through enhanced seismic requirements and building systems.

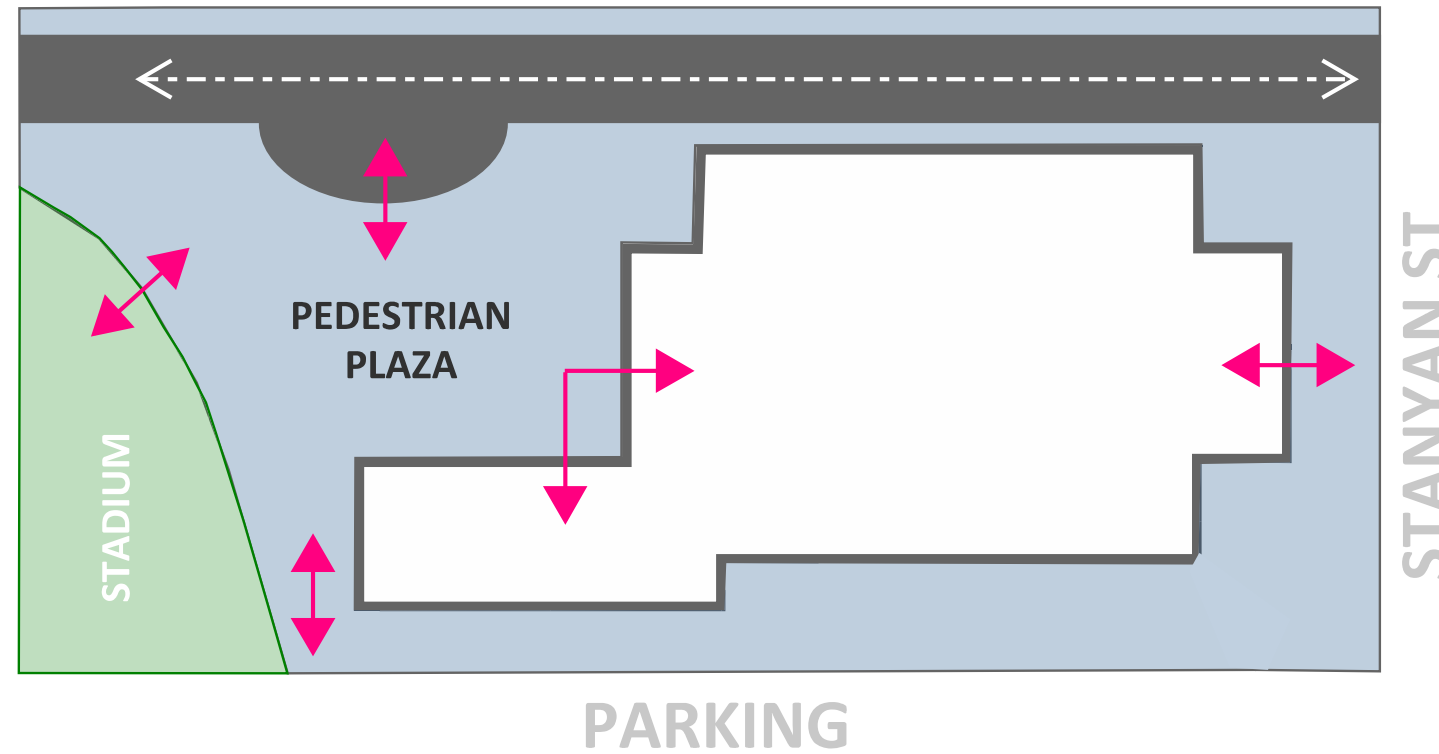


# SITE ACTIVATION

## EXISTING CONNECTIONS



## ENRICH CONNECTIVITY

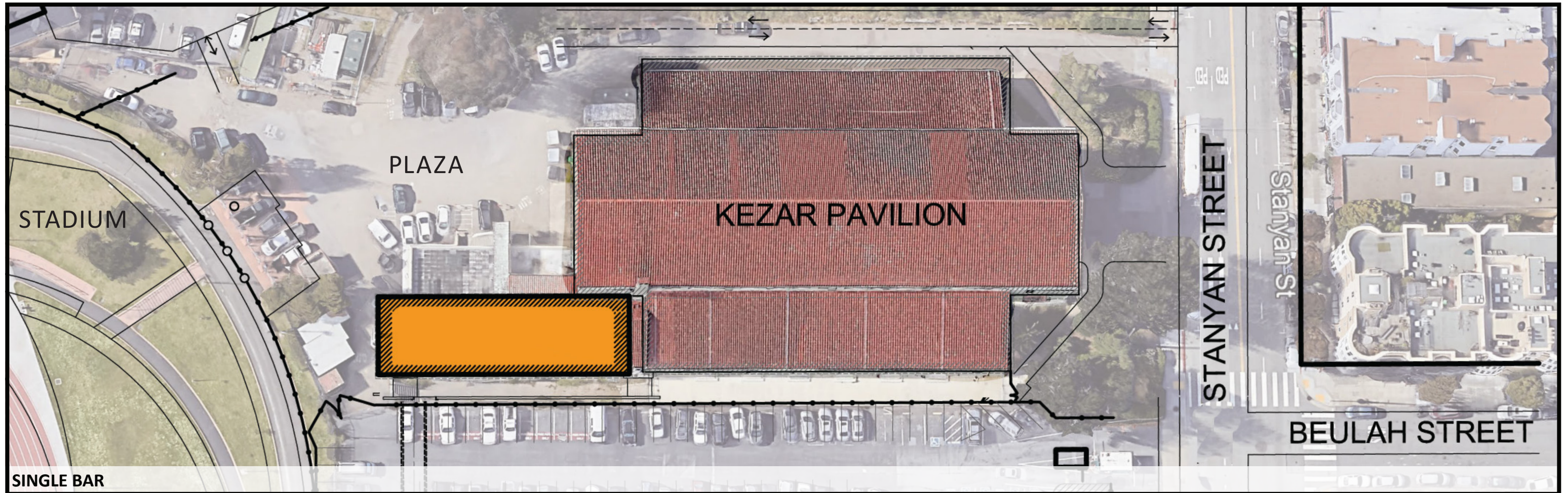
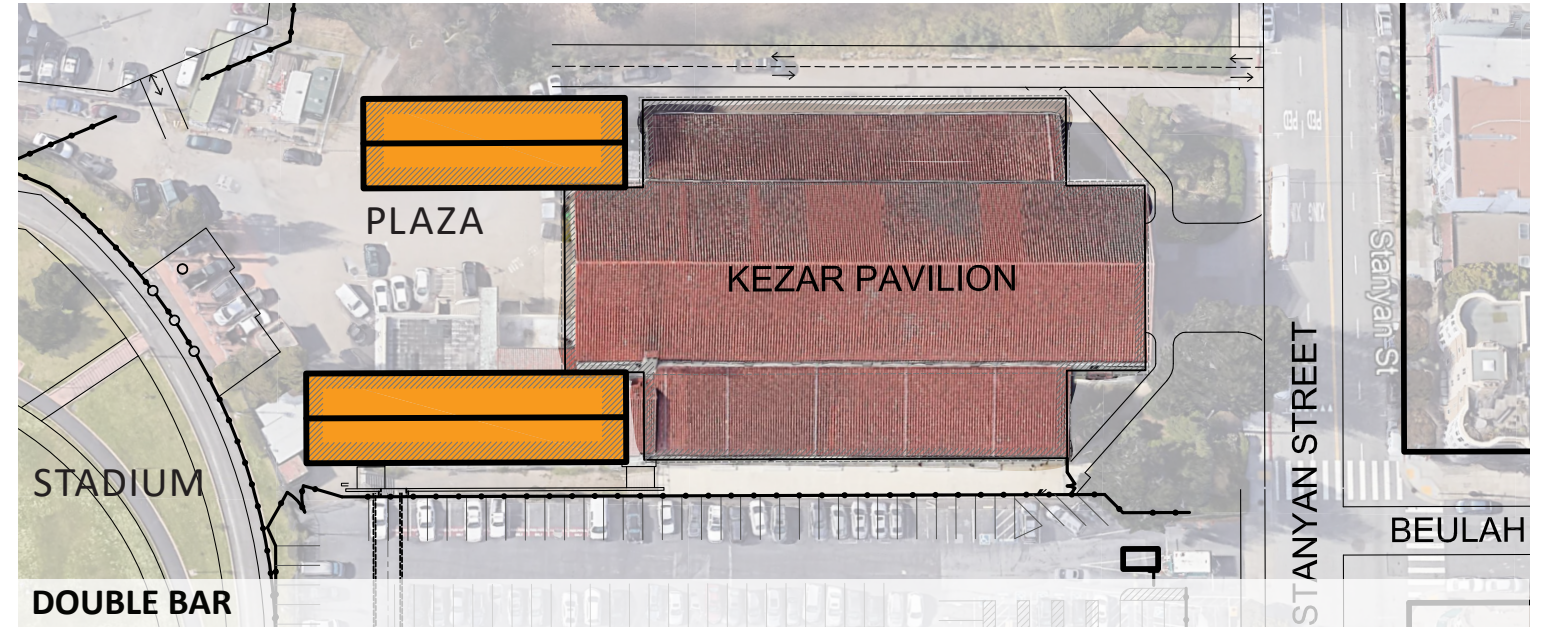
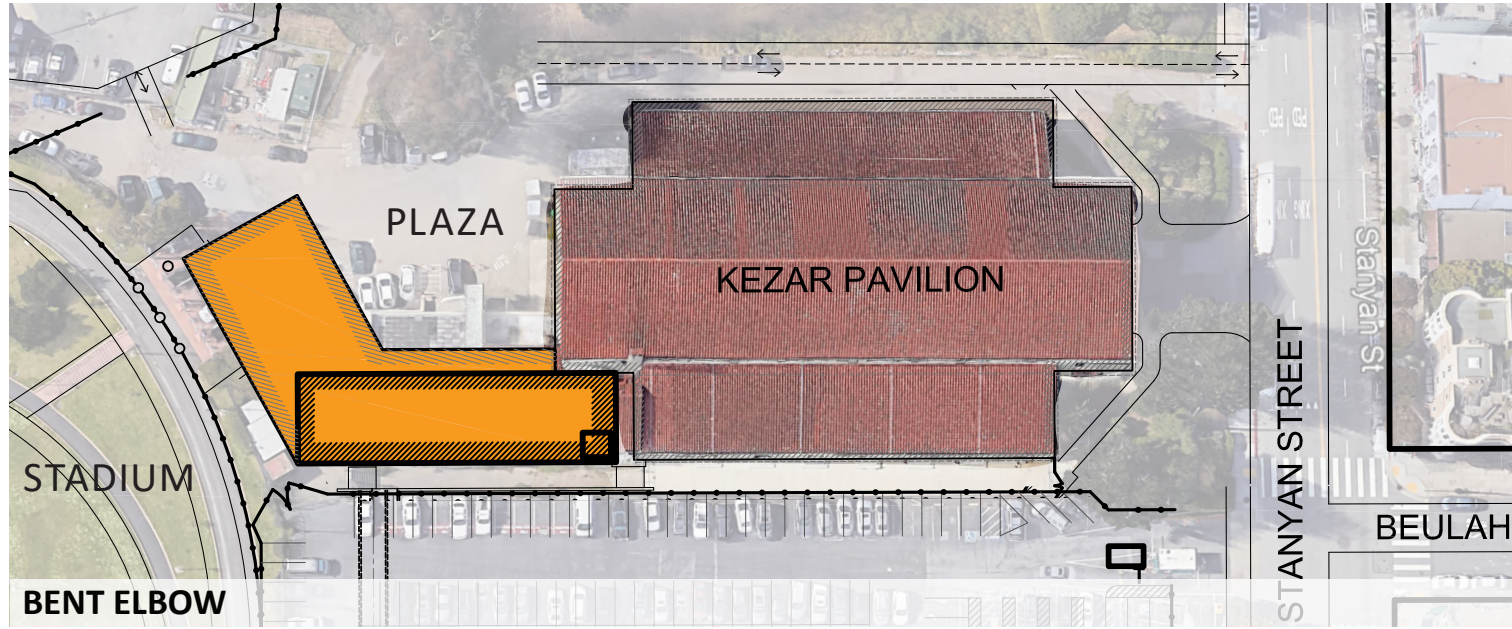


# PART 3

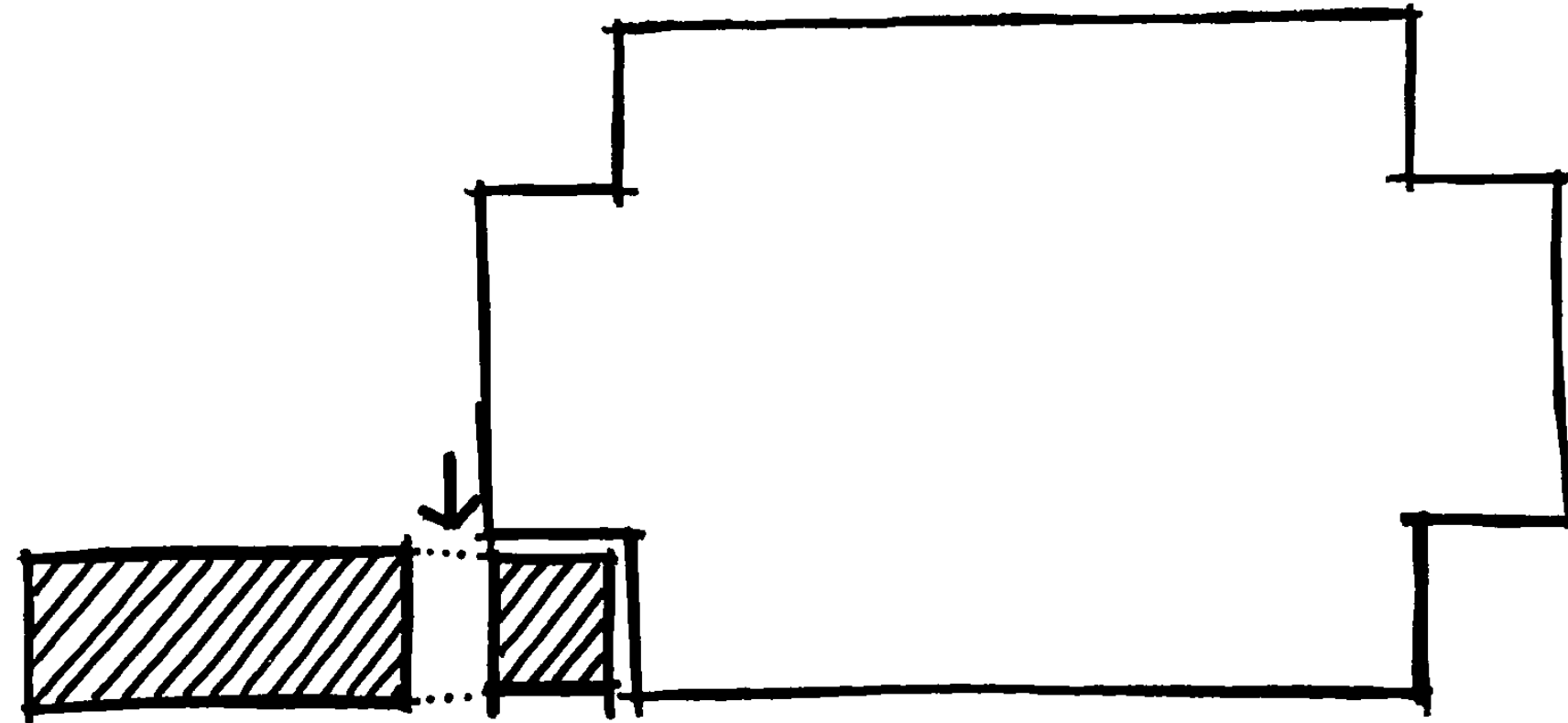
---

## Design Process & Precedents

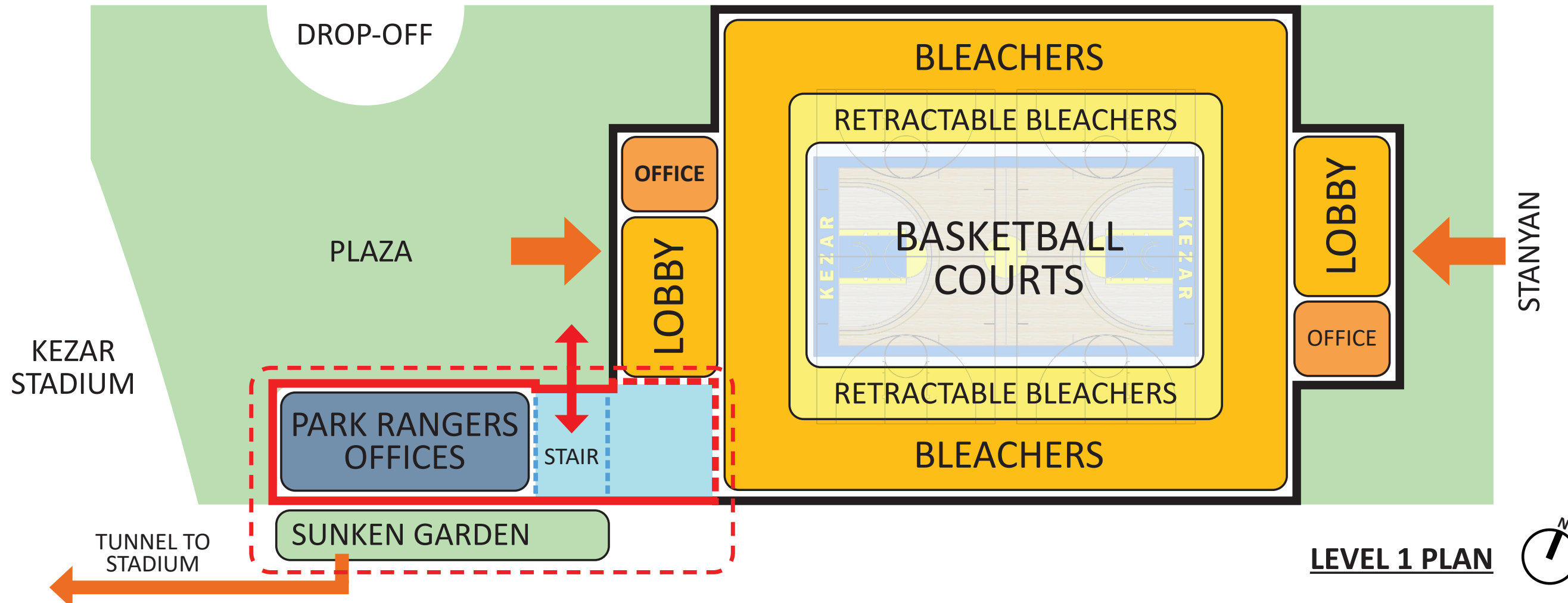
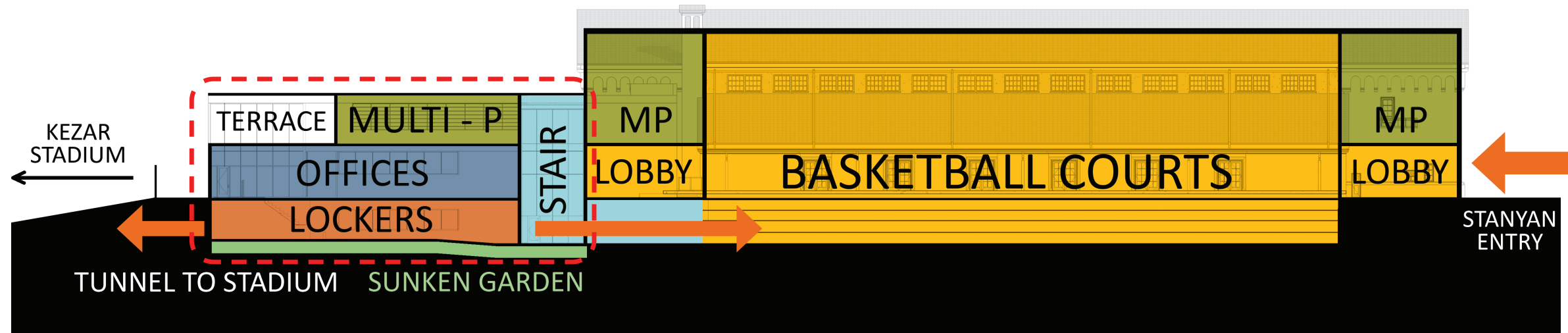
# ANNEX FOOTPRINT



# PARTI DIAGRAM



# BUILDING USE DIAGRAMS



# HISTORIC BUILDINGS WITH CONTEMPORARY ADDITIONS



**Saint Roch-de-l'Achigan City Hall**



**Bank of Montreal**



**Voltigeur De Quebec City Armoury**



**Kanzlei Balkenhol**

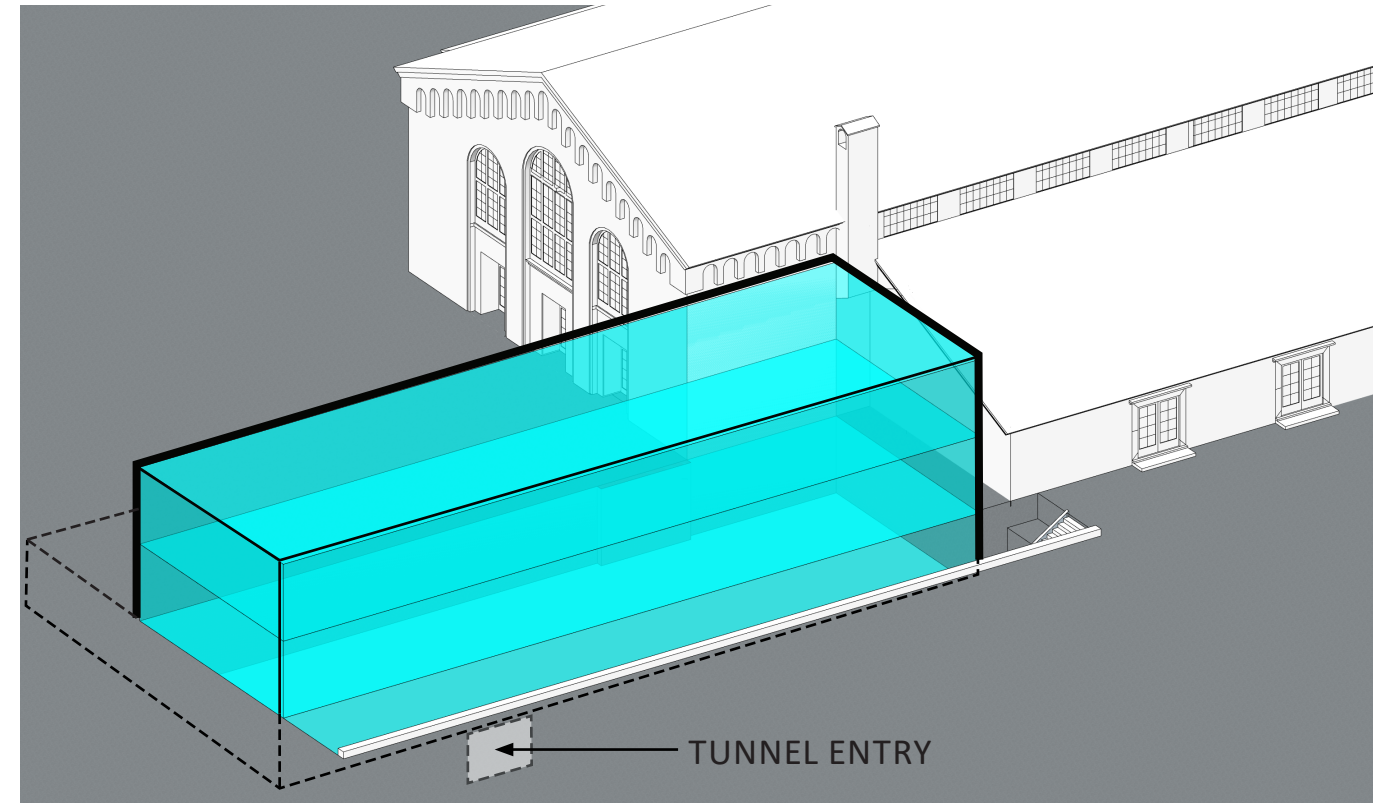
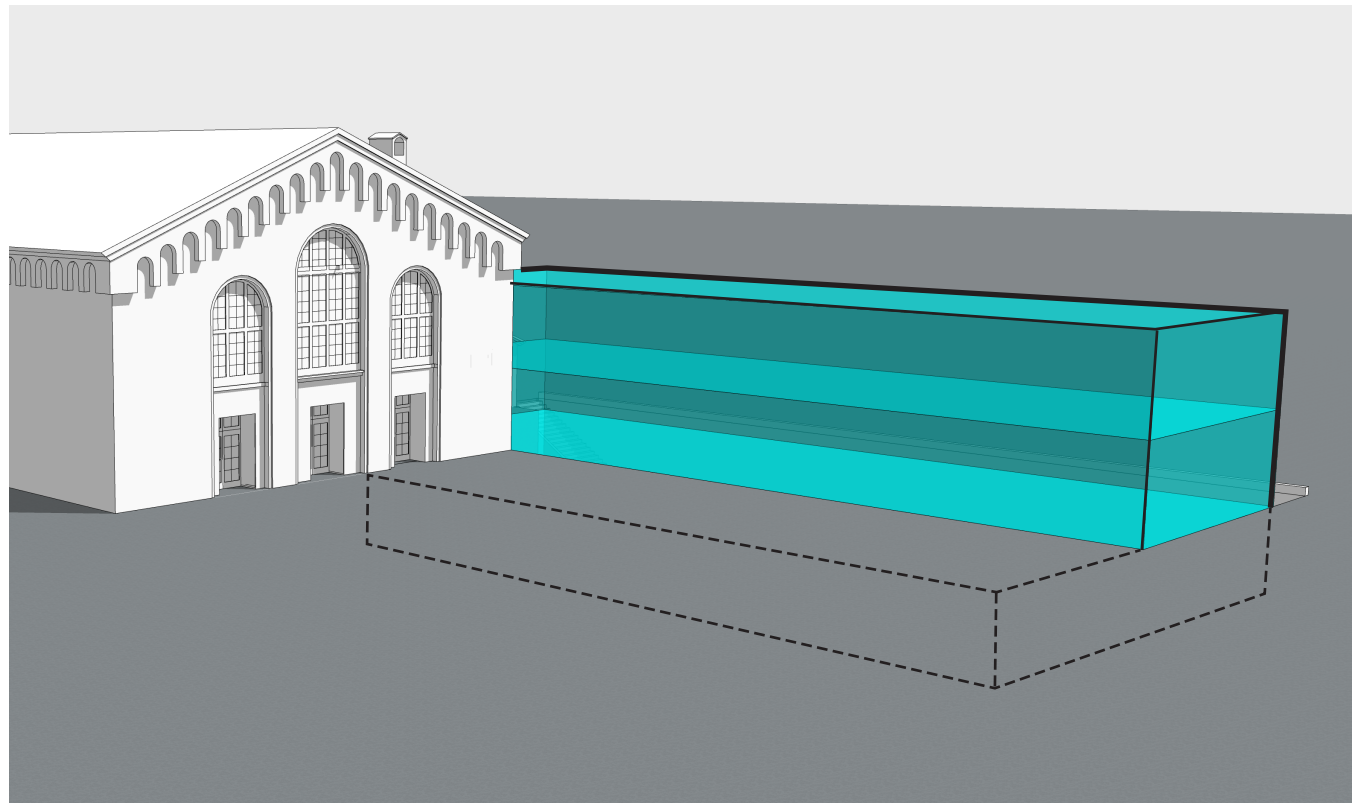


**Um und Zubau Bezirksgericht Deutschlandsberg**



**Pratt Institute - Higgins Hall**

# ANNEX MASSING



# ANNEX MASSING

ORTHOGONAL BAR 2-STORY MASSING



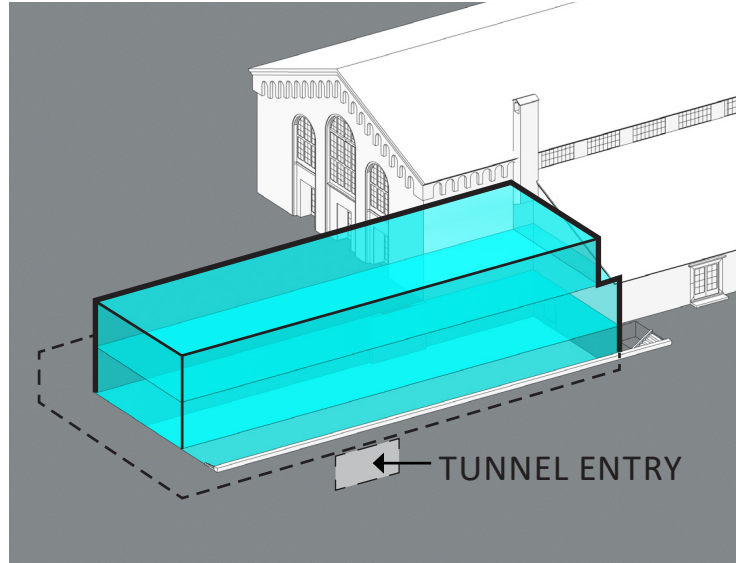
INSERT VERTICAL CIRCULATION



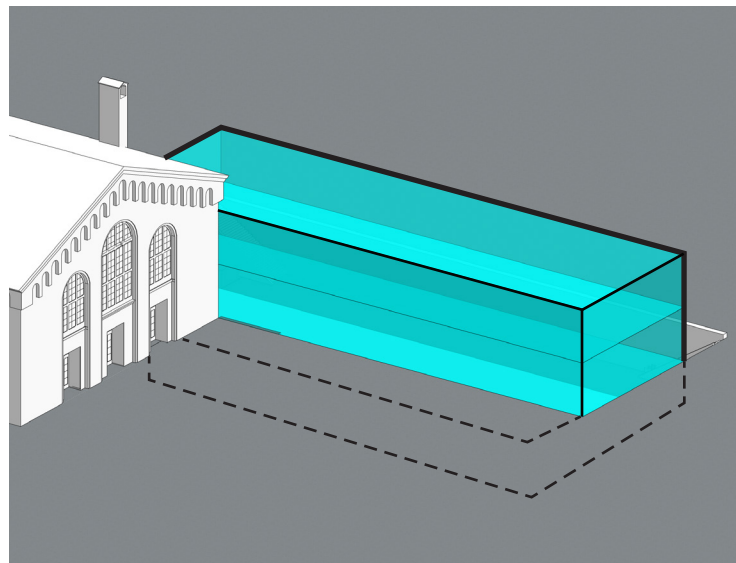
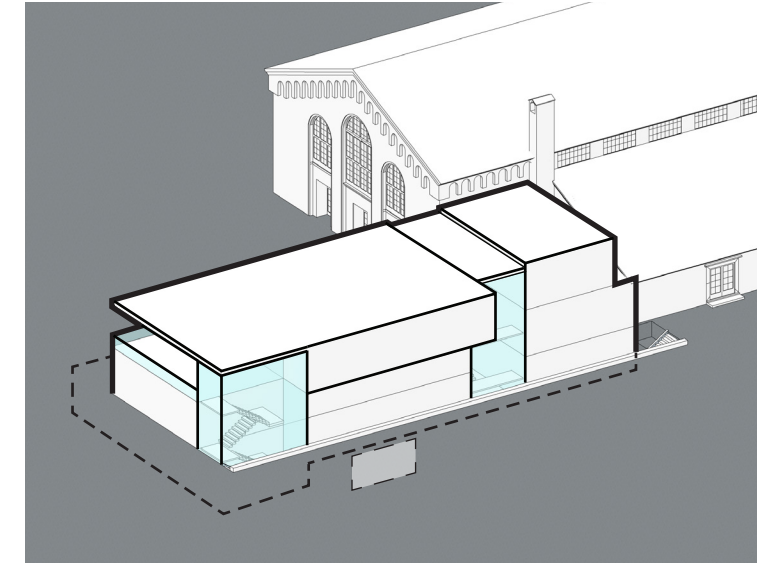
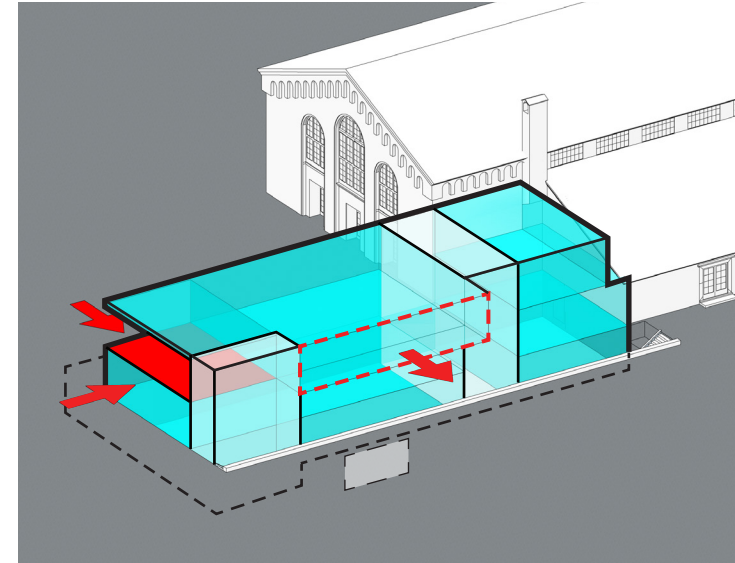
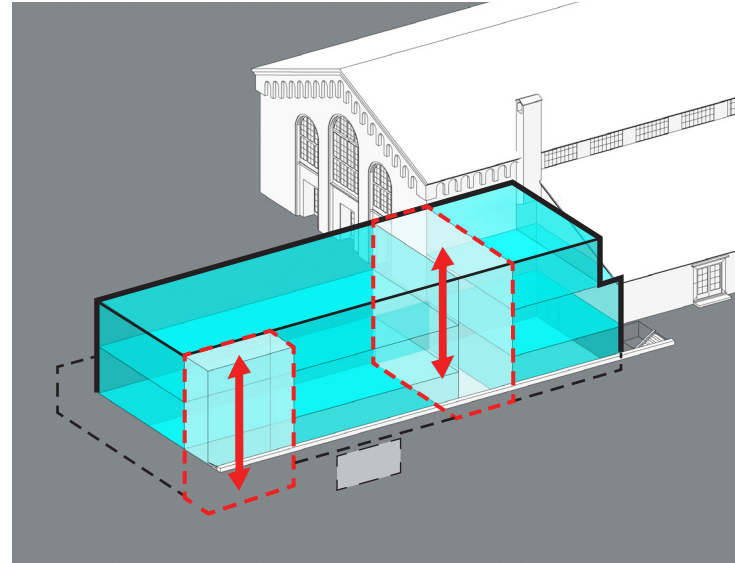
PUSH/PULL TO DEFINE OUTDOOR SPACE



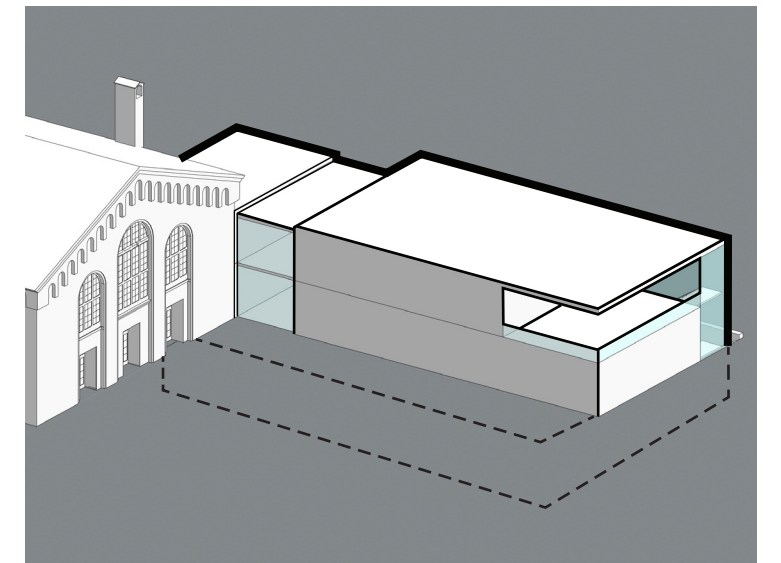
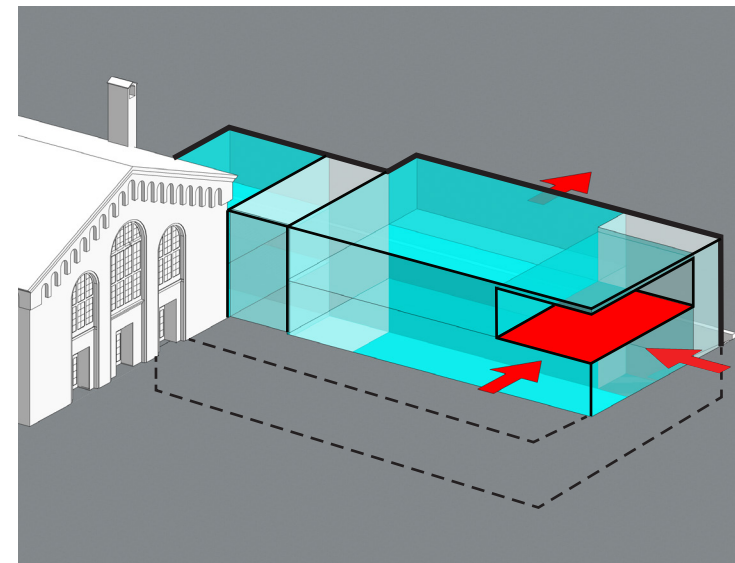
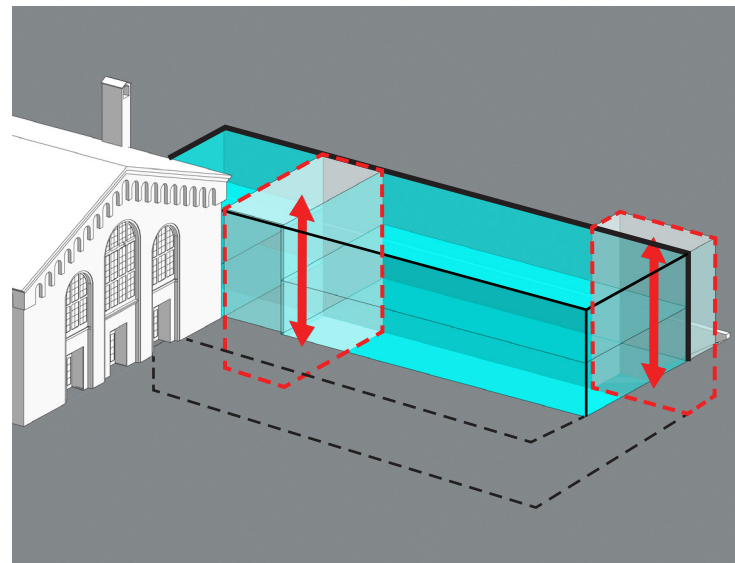
PROPOSED ANNEX FORM



VIEW LOOKING NORTHEAST

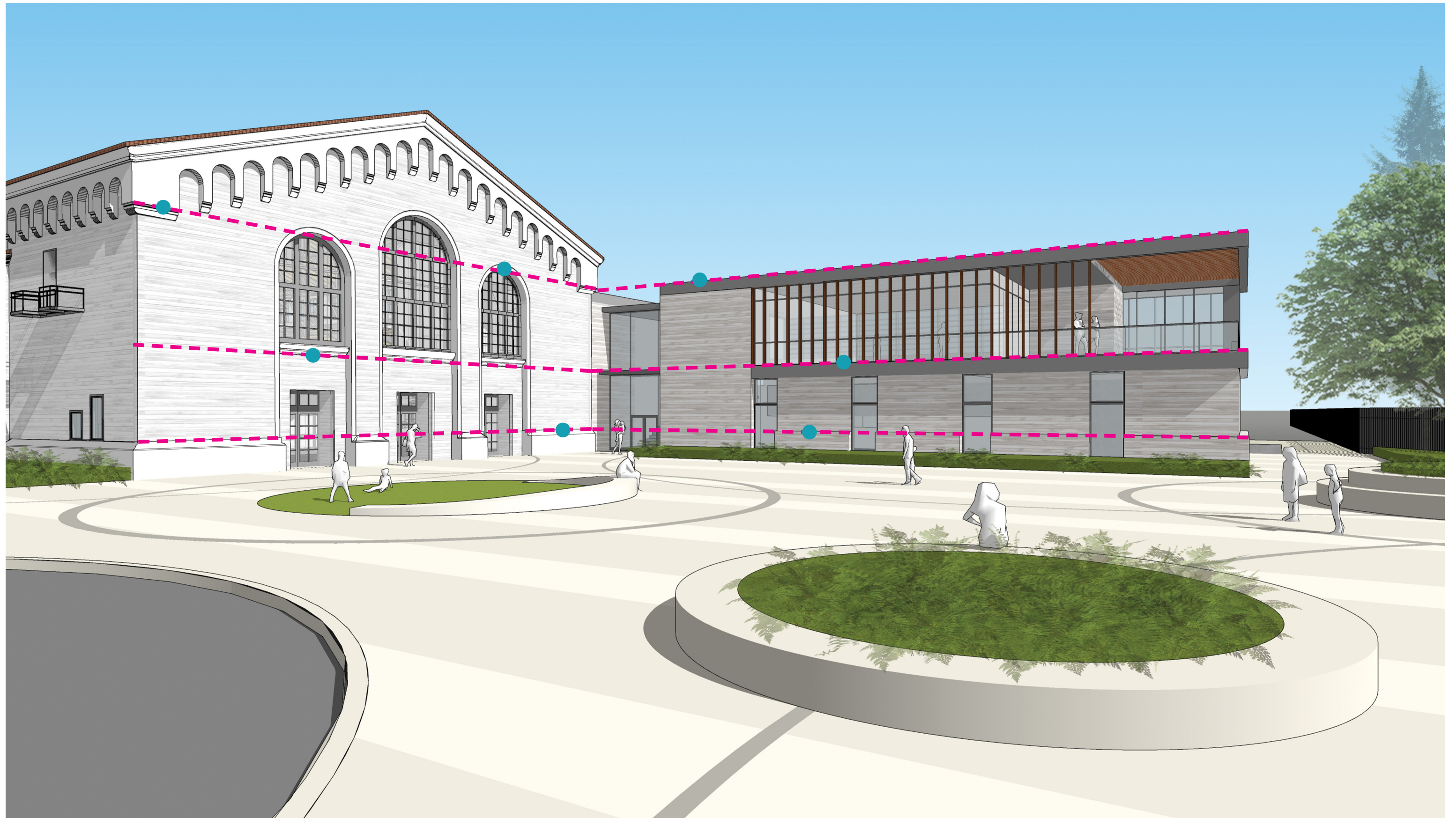


VIEW LOOKING SOUTHEAST

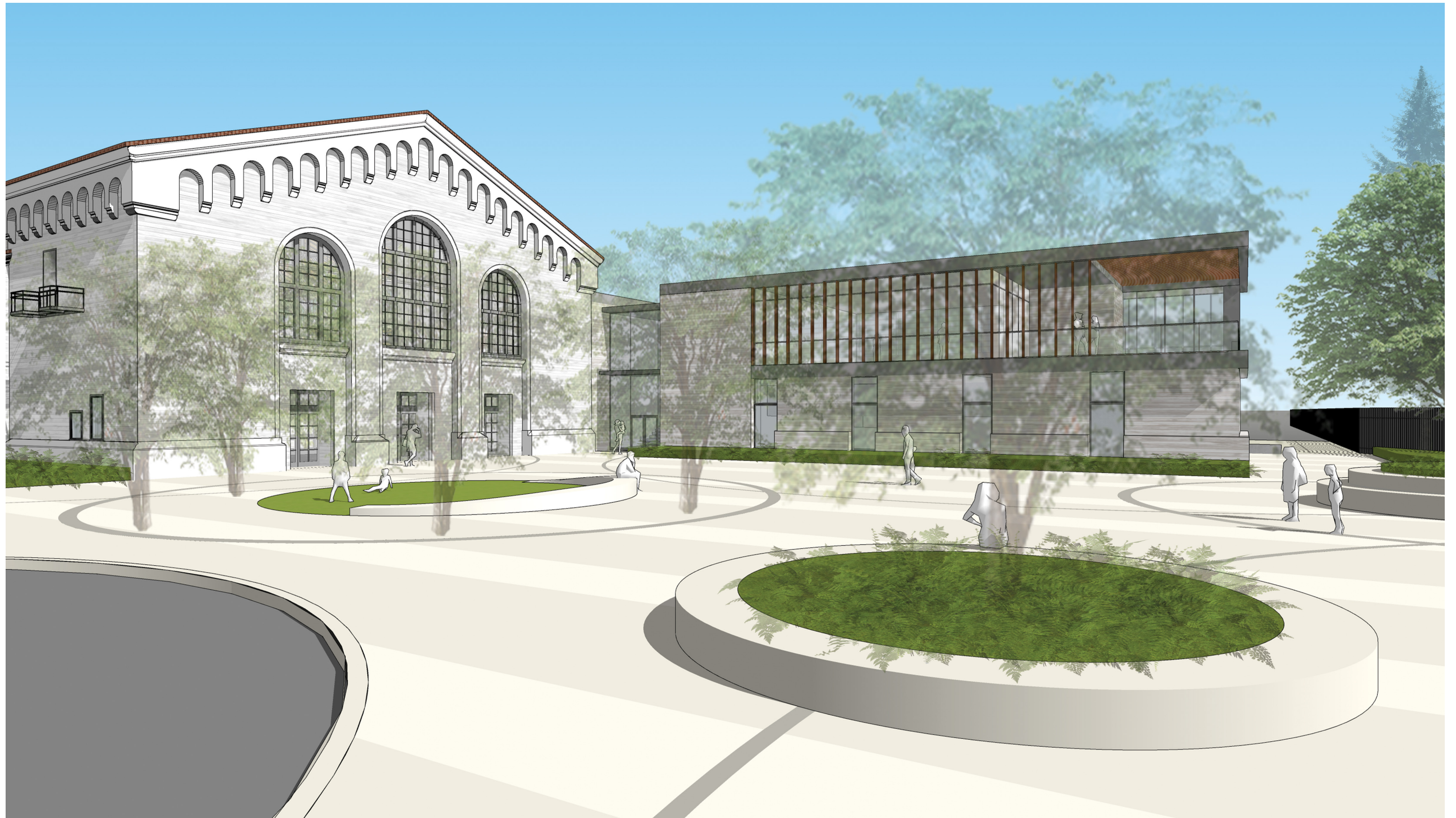




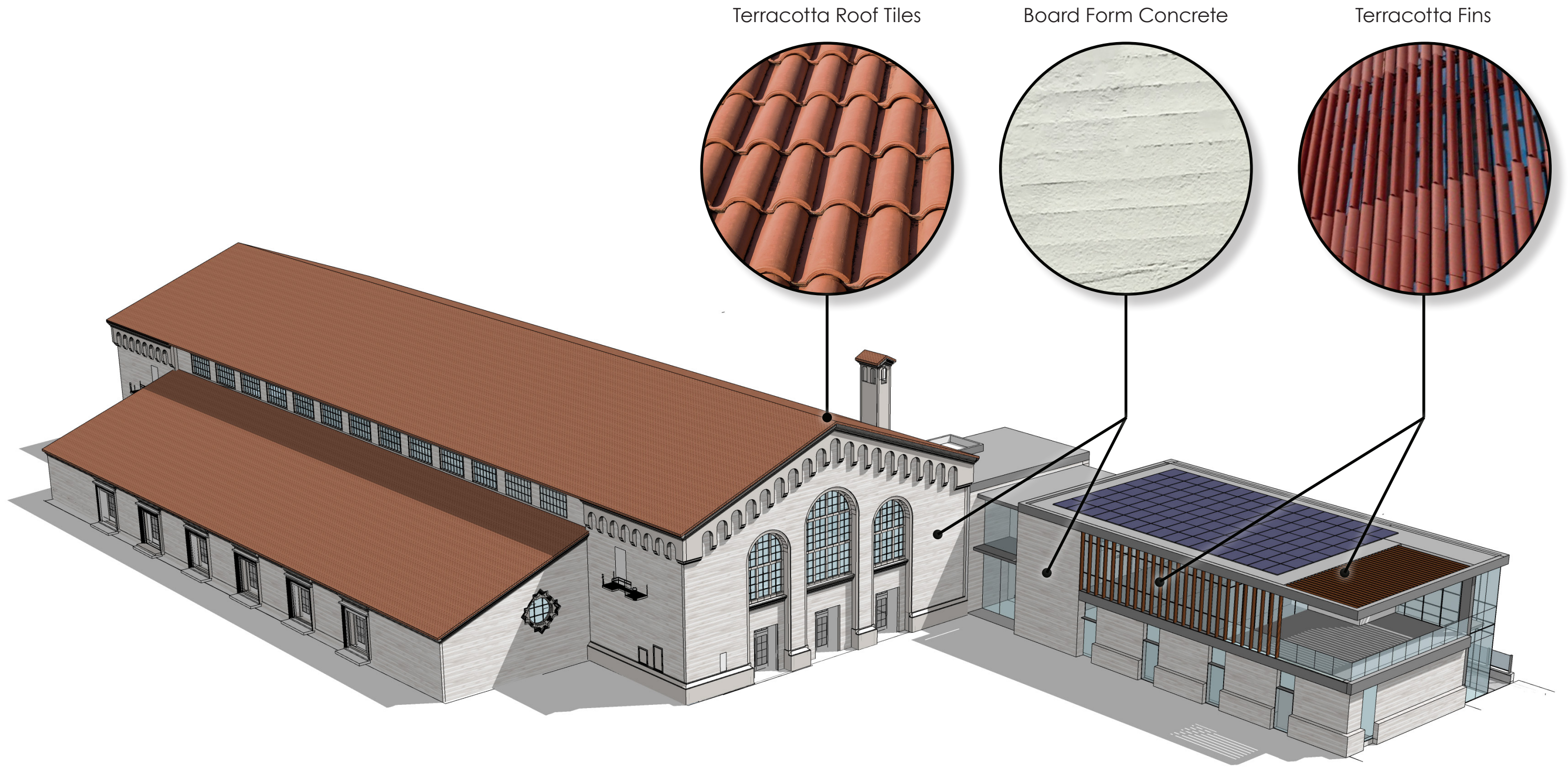


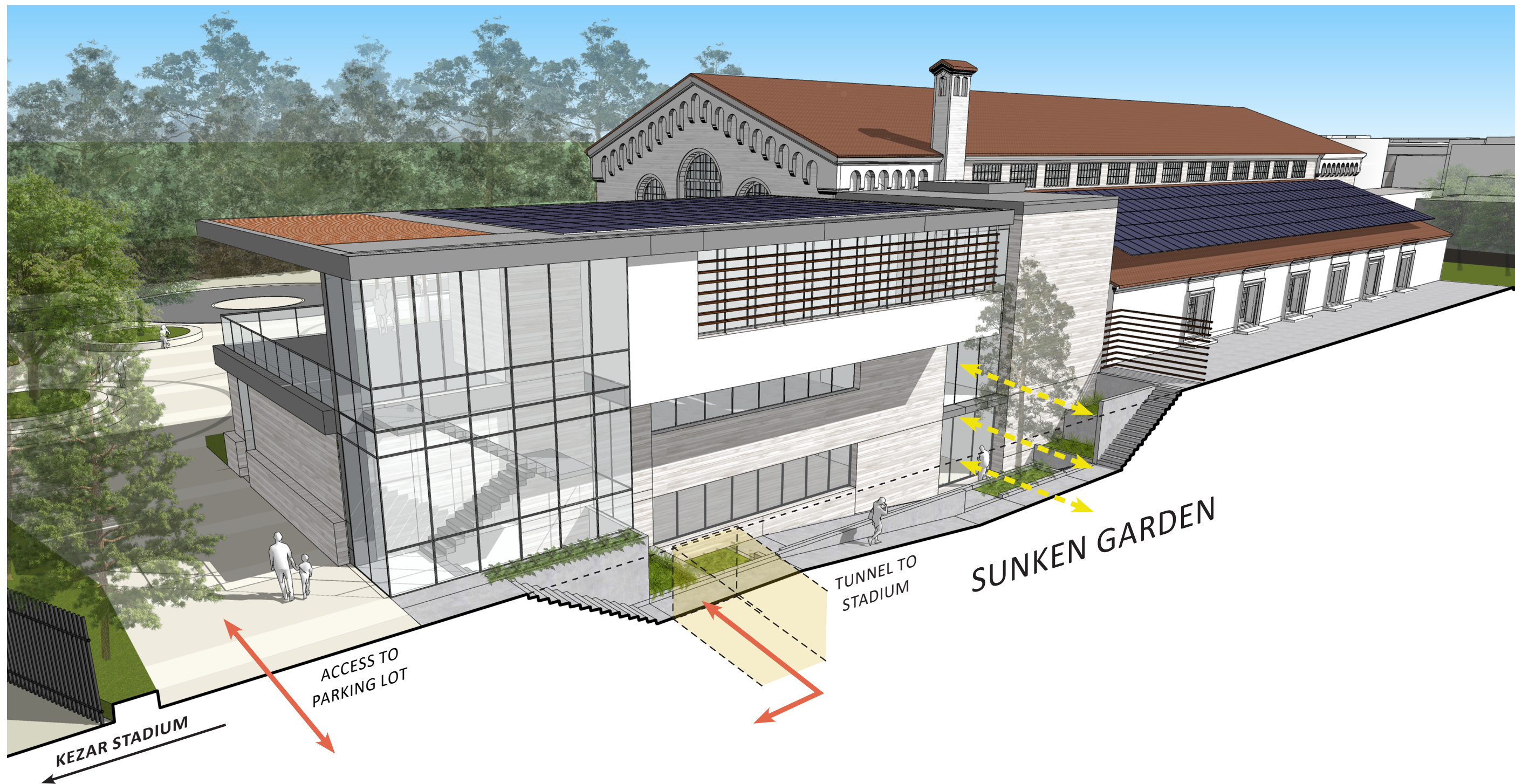






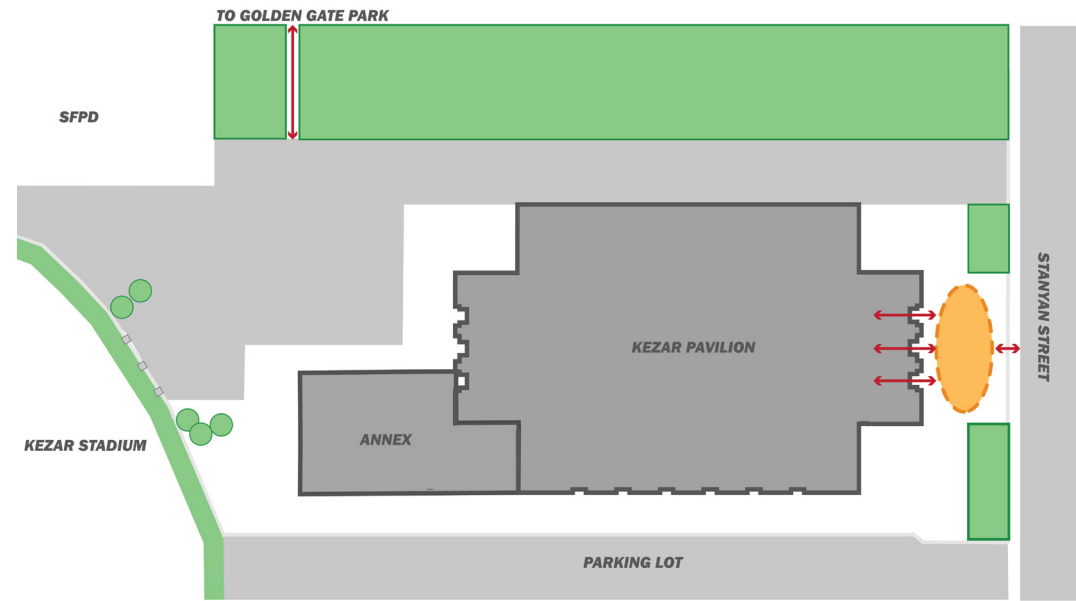
# CONTINUITY OF MATERIALS



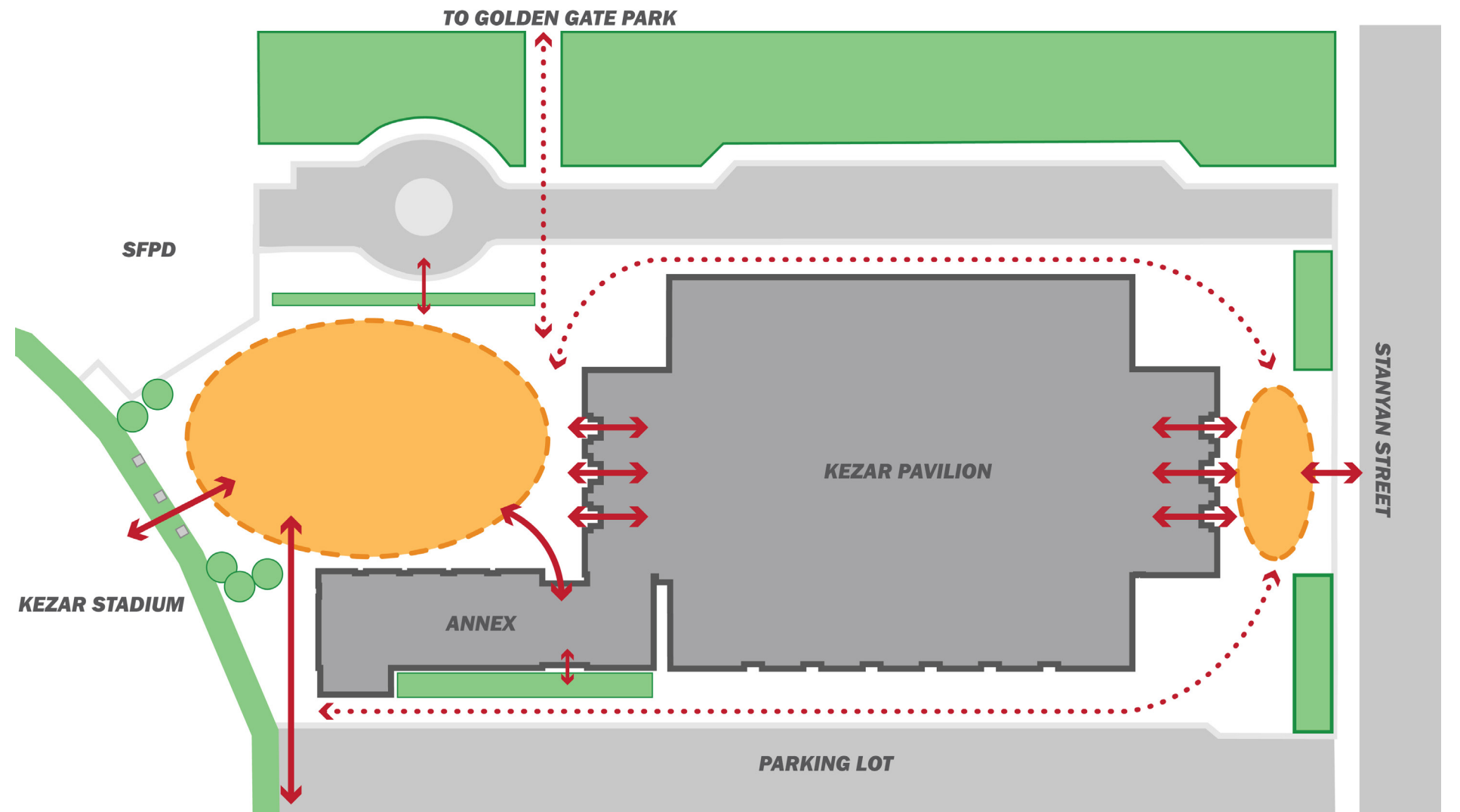


# SITE ACCESS: EXISTING & PROPOSED

## Existing

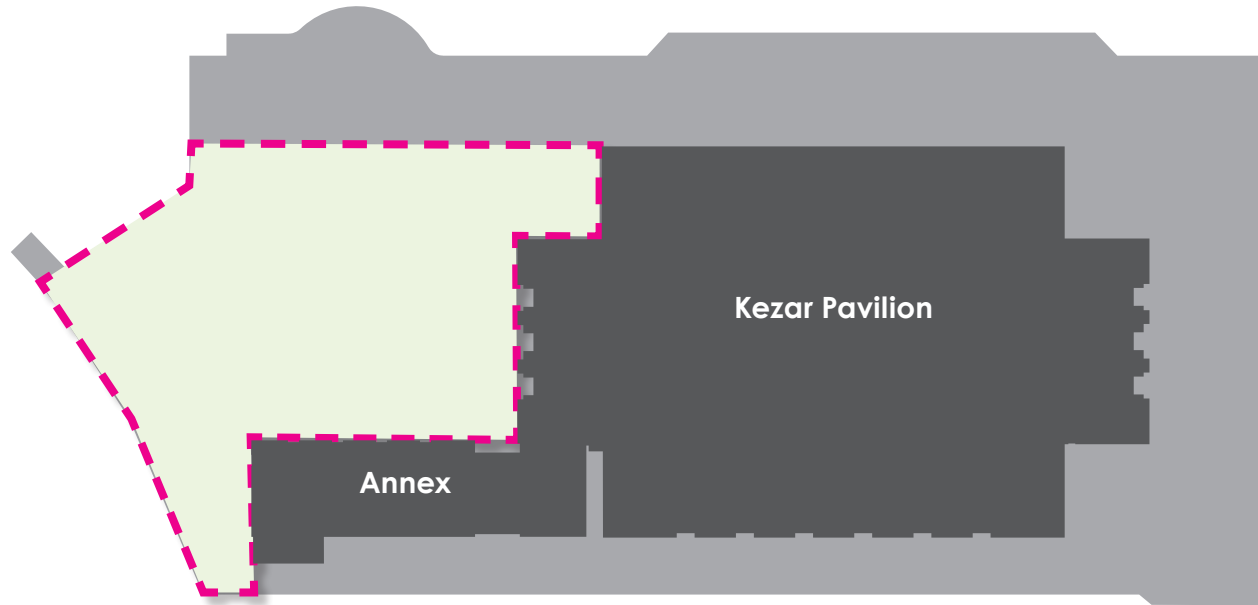


## Proposed

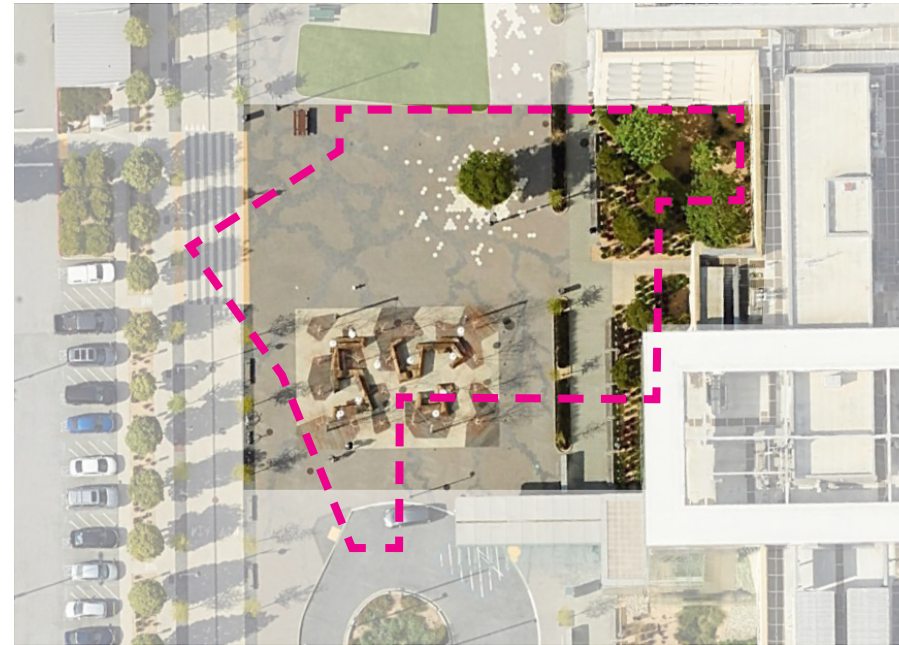


# SITE SCALE COMPARISON

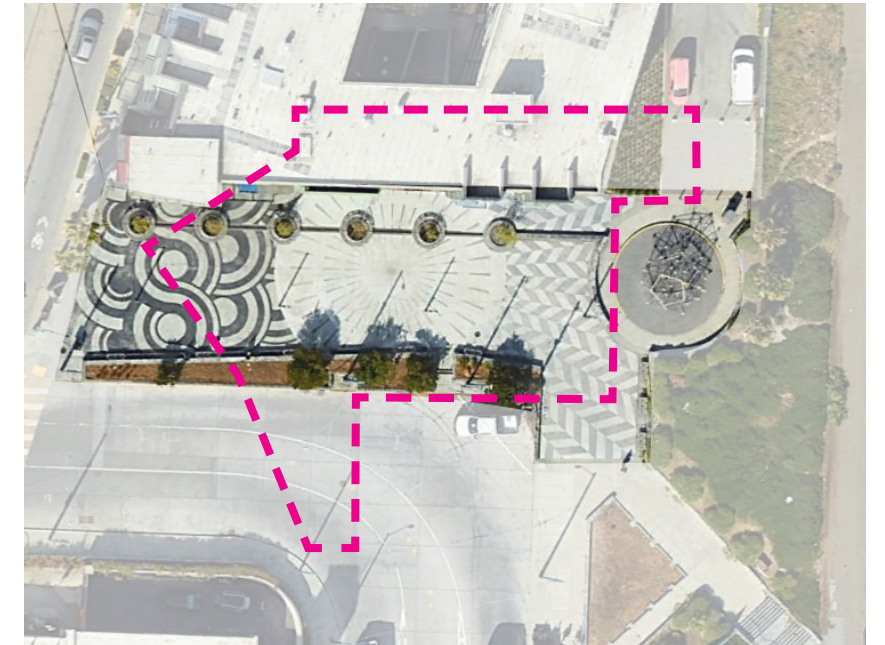
**Kezar West Plaza**  
Golden Gate Park  
0.41 Acres



**UCSF 4th Street Plaza**  
Mission Bay  
0.40 Acres



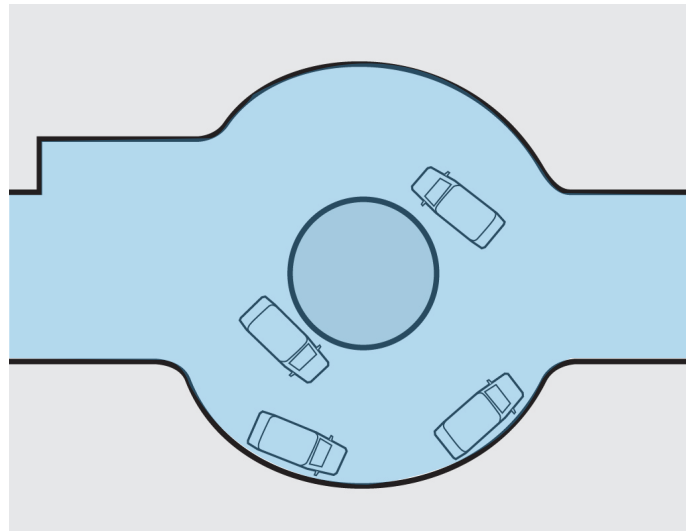
**Unity Plaza**  
Ingleside  
0.31 Acres



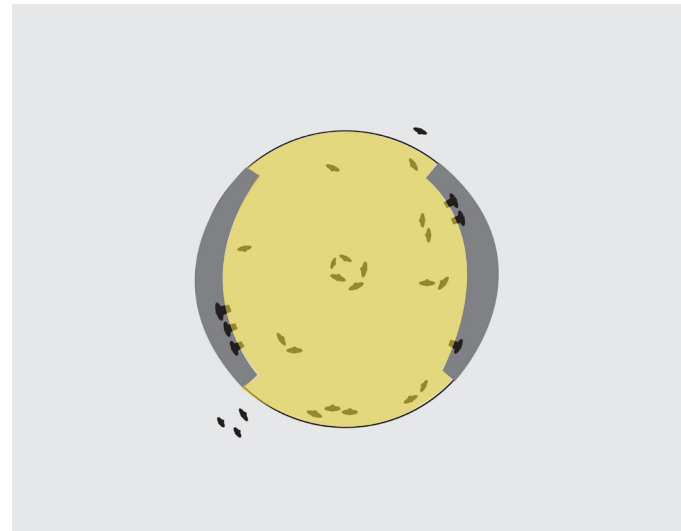


# SITE PROGRAM REQUIREMENTS

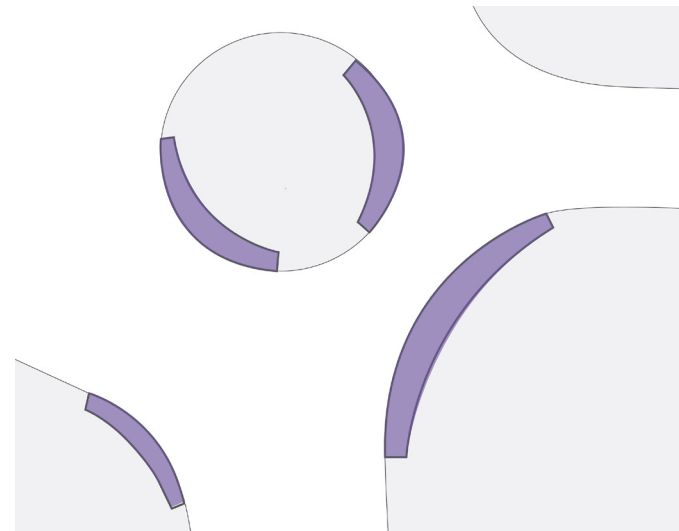
**DROP-OFF**  
Safe Unloading Zone



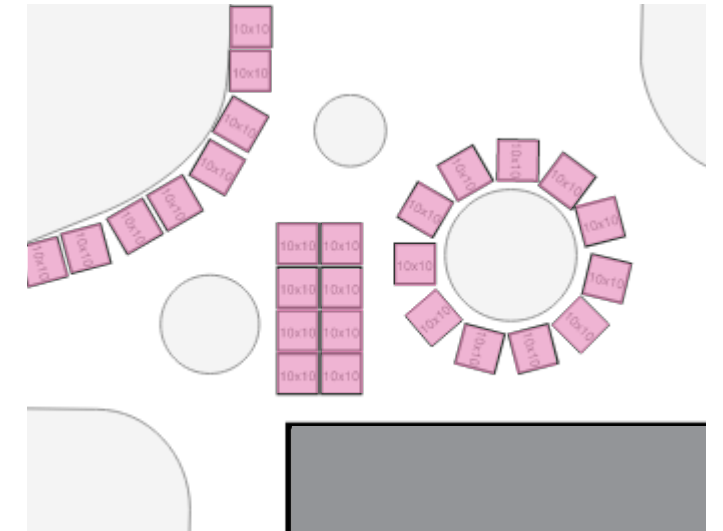
**GATHERING**  
Accomodate 30+ Kids



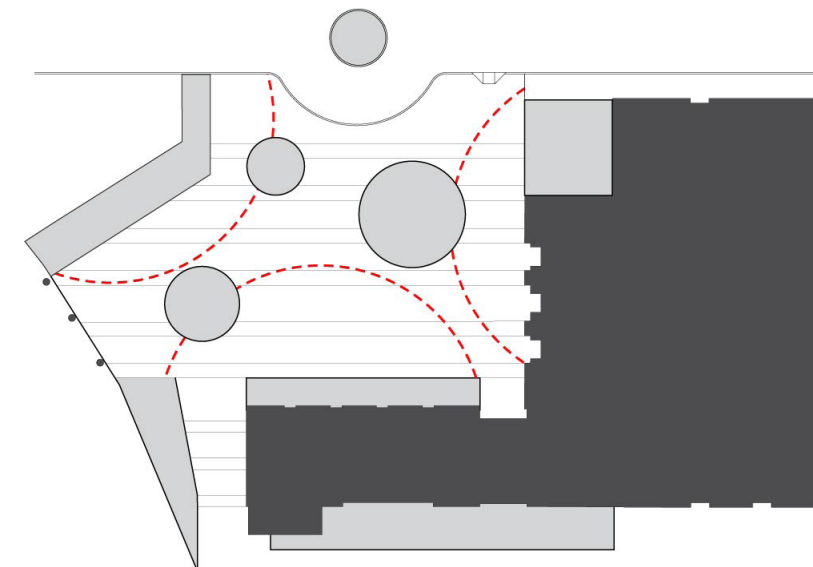
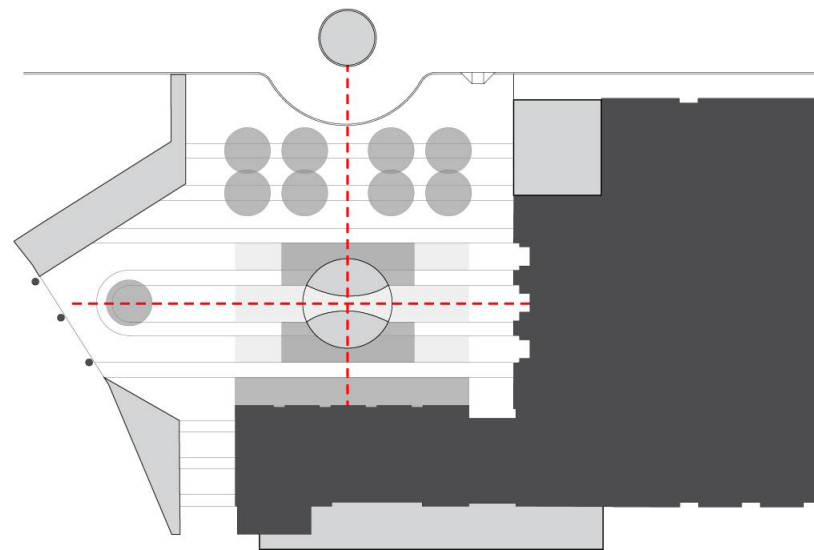
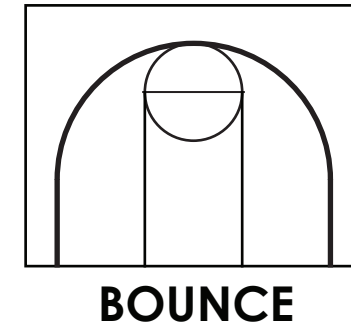
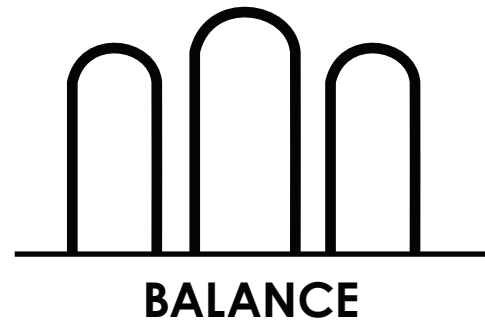
**SEATING**  
Variety of options



**EMERGENCY**  
Flexible Set-Up







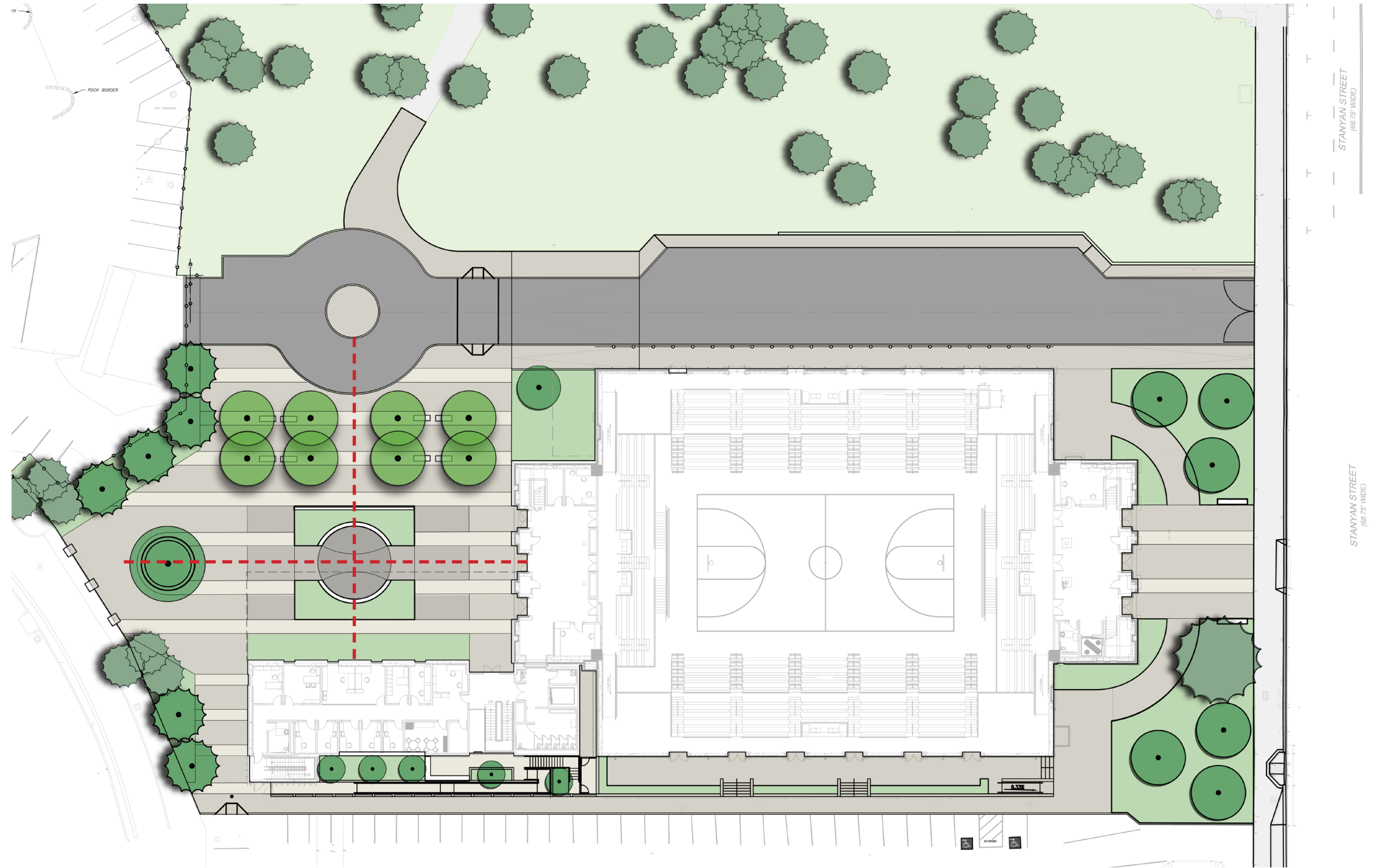
# CONCEPTS



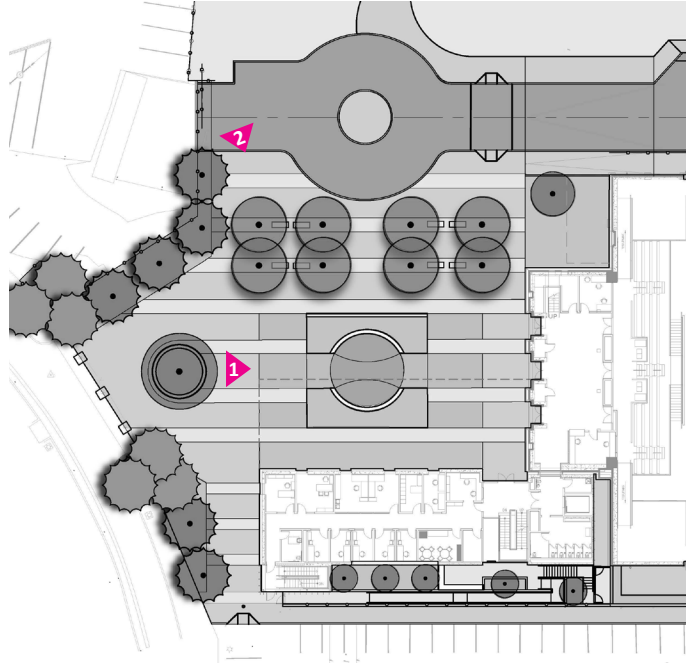
# CONCEPT: BALANCE



-  GATHERING SPACES
-  SEATING
-  MAJOR CIRCULATION
-  ENTRY POINT







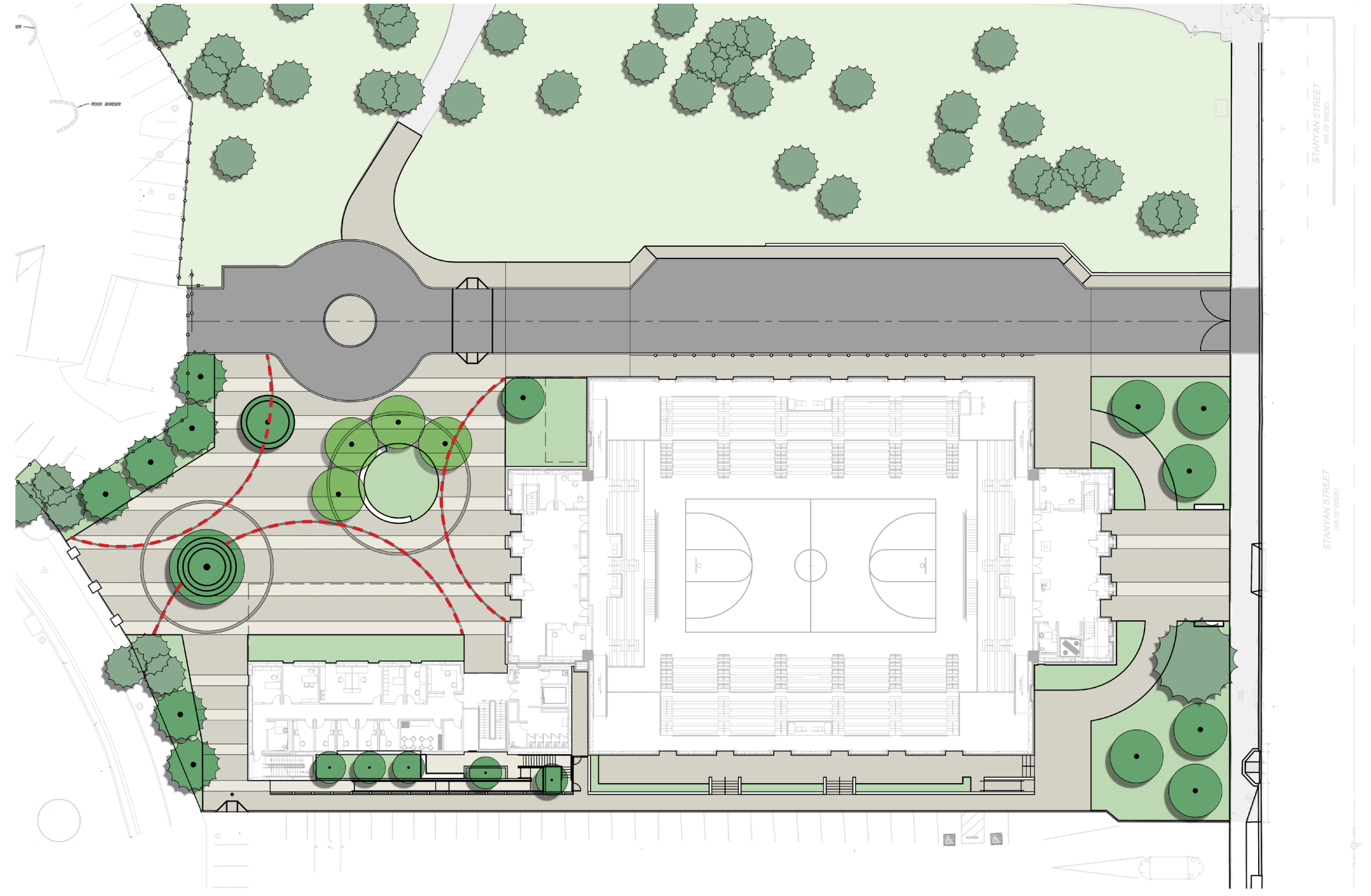
# CONCEPT: BALANCE



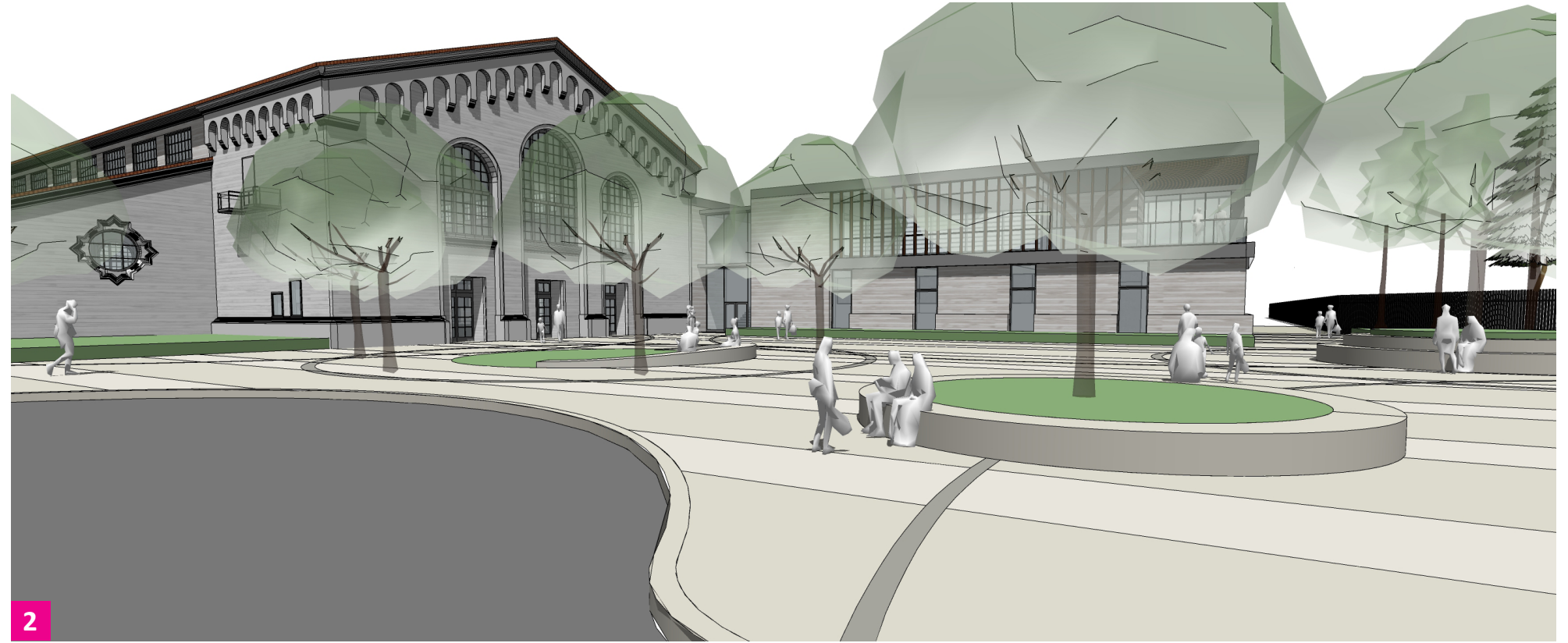
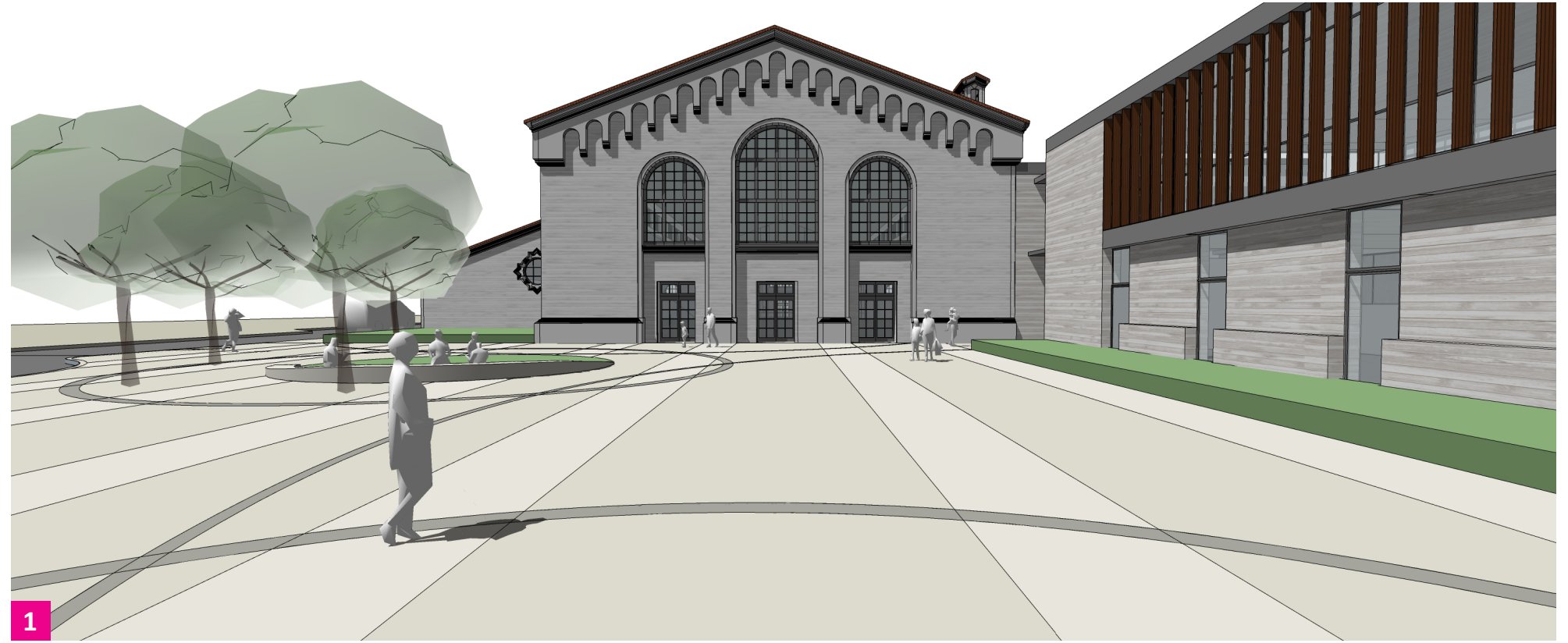
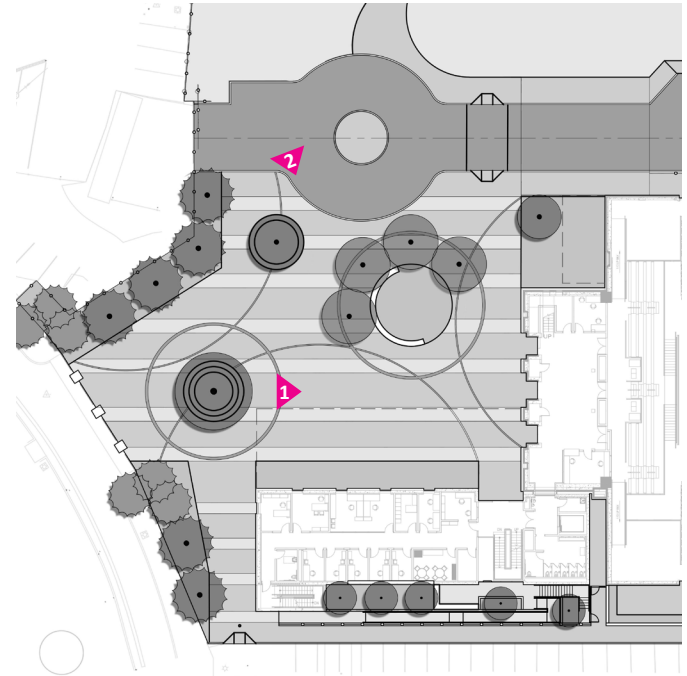
# CONCEPT: BOUNCE

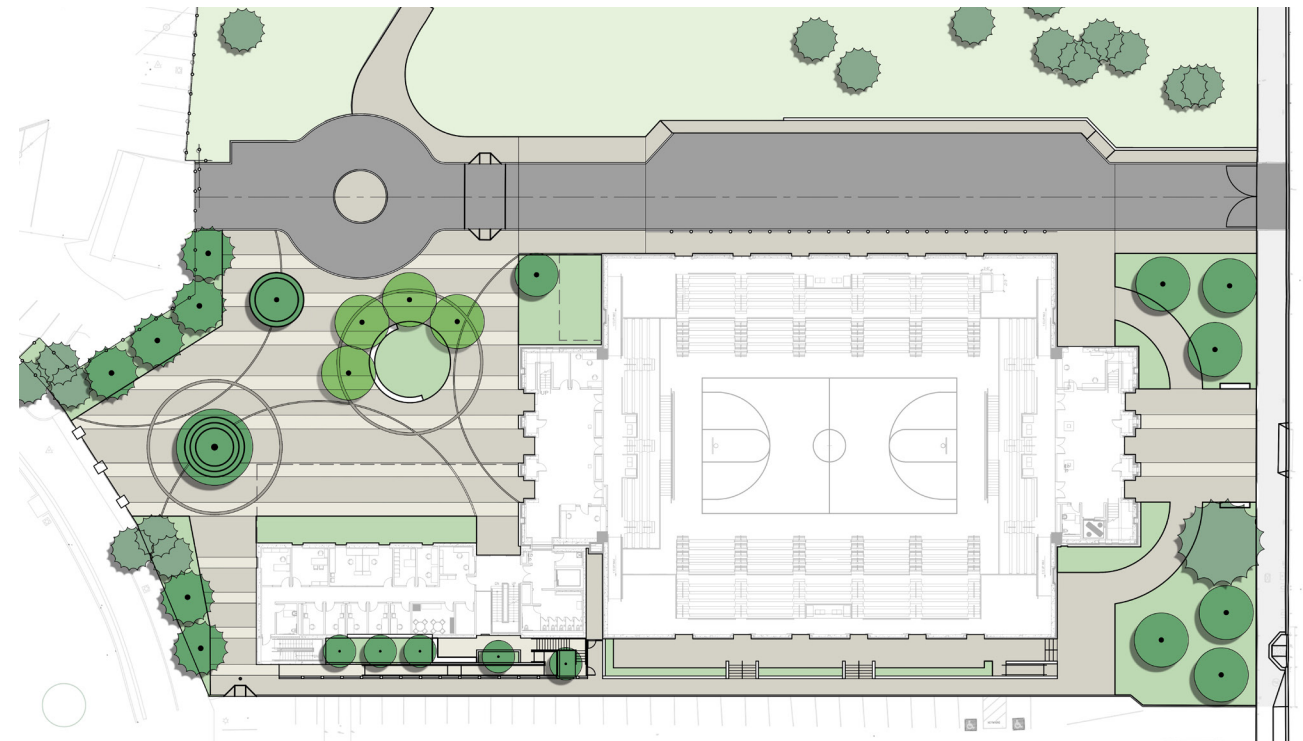
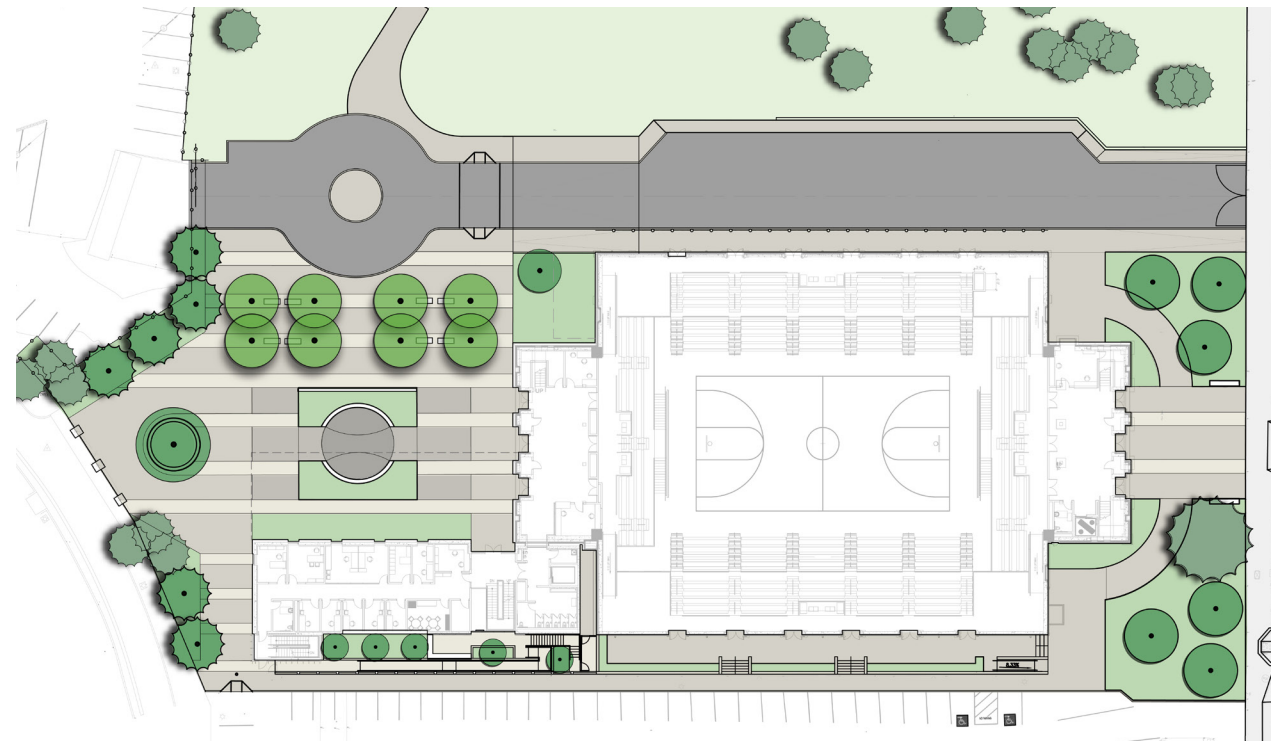
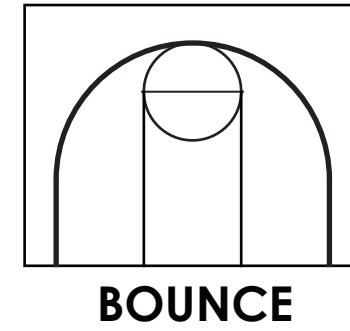
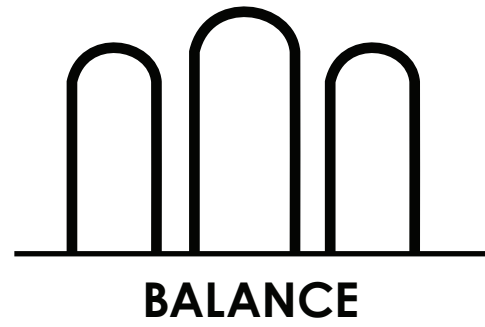


-  GATHERING SPACES
-  SEATING
-  MAJOR CIRCULATION
-  ENTRY POINT



# CONCEPT: BOUNCE











# THANK YOU

Questions & Comments?