

# Gene Friend Recreation Center

## CIVIC DESIGN REVIEW PHASE 3: CONSTRUCTION DOCUMENTS

18 March 2024



# TODAY'S AGENDA

A. PHASE III: DESIGN UPDATES

B. PHASE II: CONTINGENCIES

C. PUBLIC ART AT BUILDING INTERIOR



# DESIGN UPDATES

- PARK DESIGN
  - PG&E Service and reduced enclosure
  - Design Refinements
- REFINEMENTS RESPONDING TO CDR#2 CONTINGENCIES

# PARK DESIGN - REFERENCE PHASE 2 PERSPECTIVE



**BIRDS EYE VIEW OF PARK**

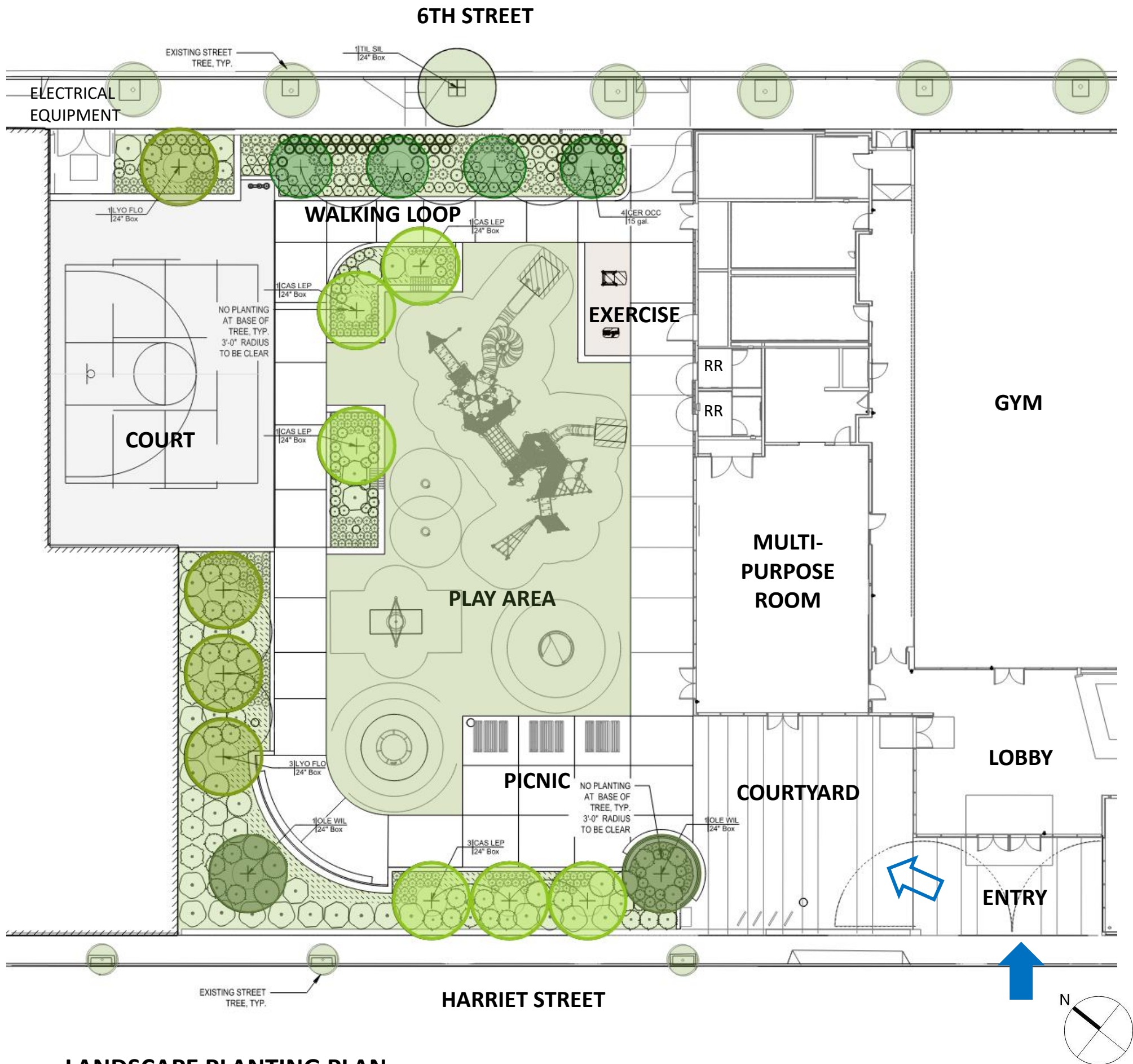
MARK CAVAGNERO ASSOCIATES | KUTH RANIERI ARCHITECTS - GENE FRIEND RECREATION CENTER



- DESIGN REFINEMENTS:**
- Revision to Secondary power allows smaller PG&E enclosure & enlarged planting zone along 6<sup>th</sup> street
  - Expanded play area towards Harriet St
  - Revised play area surfacing to turf
  - Additional planting at Harriet St
  - Relocated trees in play area to separate ball court
  - Separated exercise area adjacent to building

**BIRDS EYE VIEW OF PARK**

MARK CAVAGNERO ASSOCIATES | KUTH RANIERI ARCHITECTS - GENE FRIEND RECREATION CENTER



OLEA EUROPAEA 'WILSONII'



LYONOTHAMNUS FLOR.



CASSIA LEPTOPHYLLA



CERCIS OCCIDENTALIS

**LANDSCAPE PLANTING PLAN**

MARK CAVAGNERO ASSOCIATES | KUTH RANIERI ARCHITECTS - GENE FRIEND RECREATION CENTER

# PHASE 2 CONTINGENCIES

## **Motion:**

**Commissioner Collins, second by Commissioner Schnair, moved to approve Phase 2 of the Gene Friend Recreation Center with the following contingencies: more concentration and study on the frit pattern, the vertical louvers, and a clearly defined design presence at the Harriet Street entrance. The motion carried by the following vote: Ayes: Carney, Collins, Rothschild, Schnair, Stryker**

## **Items for review today:**

1. Design Presence at Harriet Street Entry
2. Refined approached of frit pattern
3. Refinements of the Architectural Screen (Vertical louvers)

# 1. ENTRANCE AT HARRIET STREET



## INVITING ENTRY ON HARRIET STREET

MARK CAVAGNERO ASSOCIATES | KUTH RANIERI ARCHITECTS - GENE FRIEND RECREATION CENTER



## 2. FRIT PATTERN - REFERENCE PHASE 2 RENDERING



**CORNER 6<sup>TH</sup> AND FOLSOM – GLASS LIGHTBOX IDEA RETAINED**

MARK CAVAGNERO ASSOCIATES | KUTH RANIERI ARCHITECTS - GENE FRIEND RECREATION CENTER

## 2. FRIT PATTERN - REVIEWING COMMITTEE CONCERNS



San Francisco County Jail: View of Façade from HWY 80

### **OBSERVATIONS ON FAÇADE:**

- Frit is inherently meant to fully screen view of service space behind cells
- Color does not fully synch up with spandrel panels & Pattern looks dirty due to glass color
- Curvilinear form increases the distortion/read of the pattern
- At night this space is dimly lit so the building does not act like a lantern

### **SUMMARY**

Overall resulting appearance feels ad-hoc and appears like an empty building where the landlord has screened the windows to conceal the interior.

## 2. FRIT PATTERN - PHASE 3 PROPOSED



**CORNER 6<sup>TH</sup> AND FOLSOM**

MARK CAVAGNERO ASSOCIATES | KUTH RANIERI ARCHITECTS - GENE FRIEND RECREATION CENTER



**STREET VIEW AT FOLSOM & 6<sup>TH</sup> STREET (LOW POINT)**

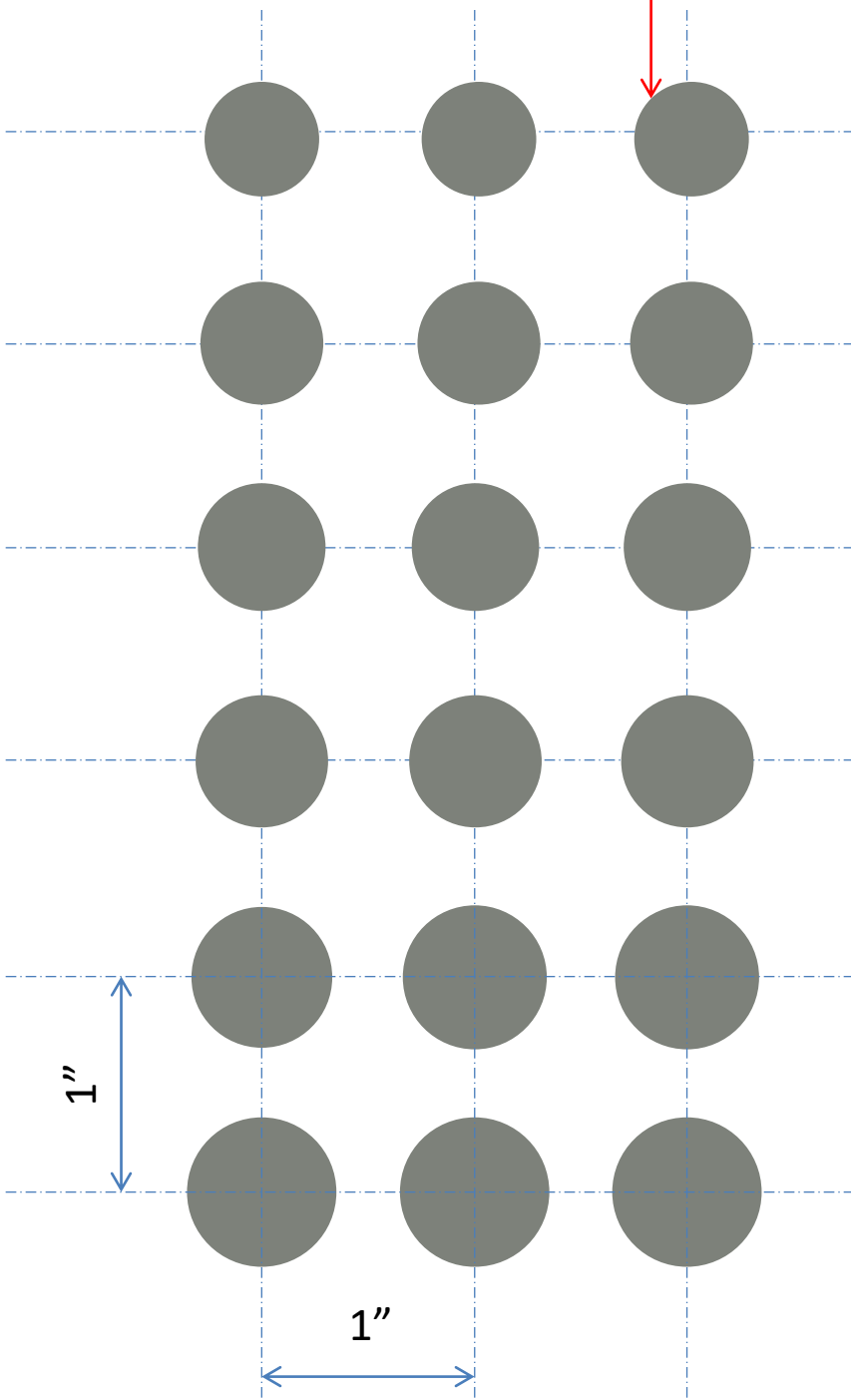
MARK CAVAGNERO ASSOCIATES | KUTH RANIERI ARCHITECTS - GENE FRIEND RECREATION CENTER



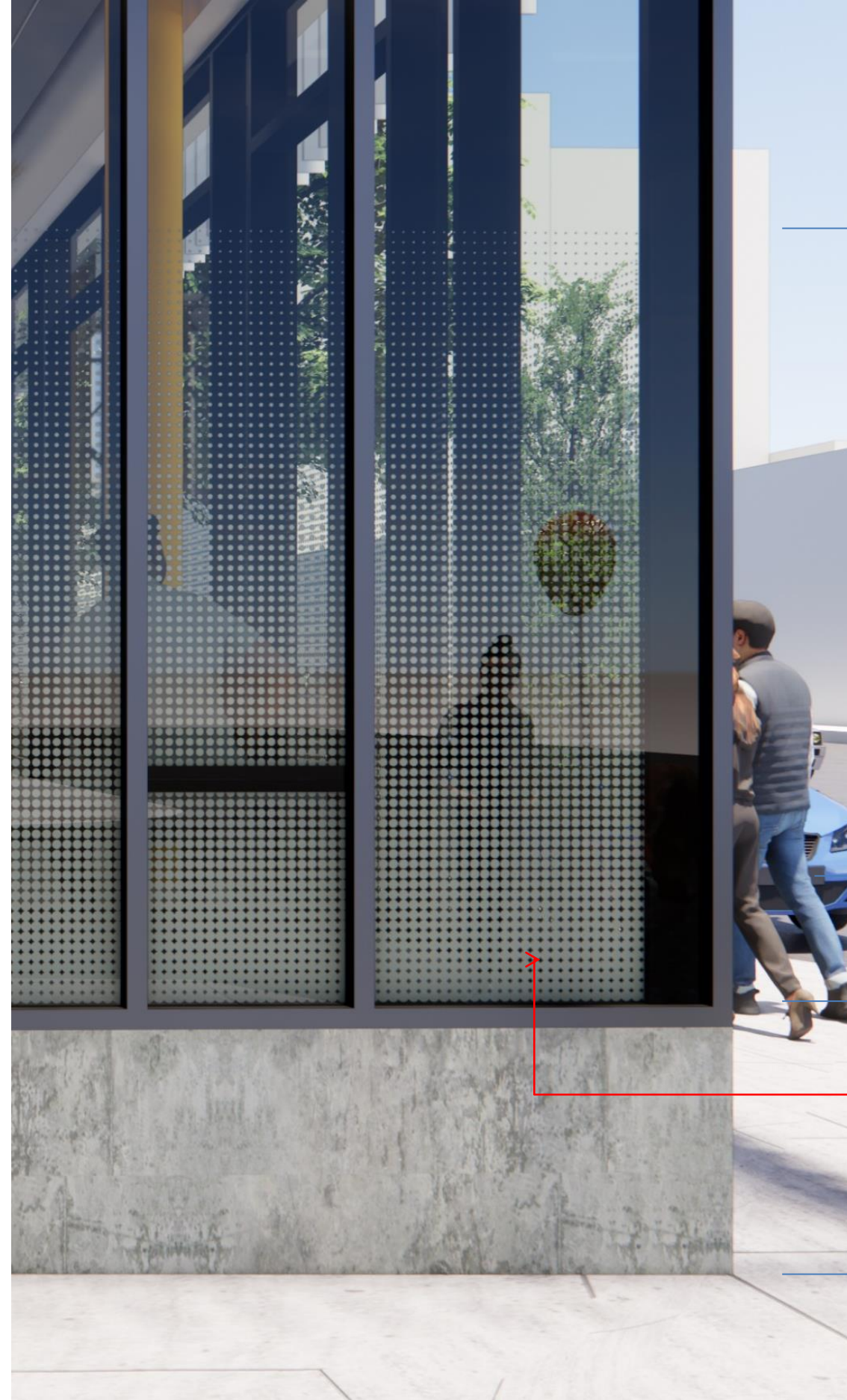
**STREET VIEW AT 6<sup>TH</sup> STREET (HIGH POINT)**

MARK CAVAGNERO ASSOCIATES | KUTH RANIERI ARCHITECTS - GENE FRIEND RECREATION CENTER

Dot's diminish in 1/16" increments.



REPRESENTATIONAL ENLARGEMENT  
(NOT TO SCALE)



Top of Graphic Pattern ⊕  
+6'-3"

DIMINISHING DOT SIZE

ZONE OF CONSISTENT  
DOT PATTERN

FIRST FLOOR ⊕  
0'-0"

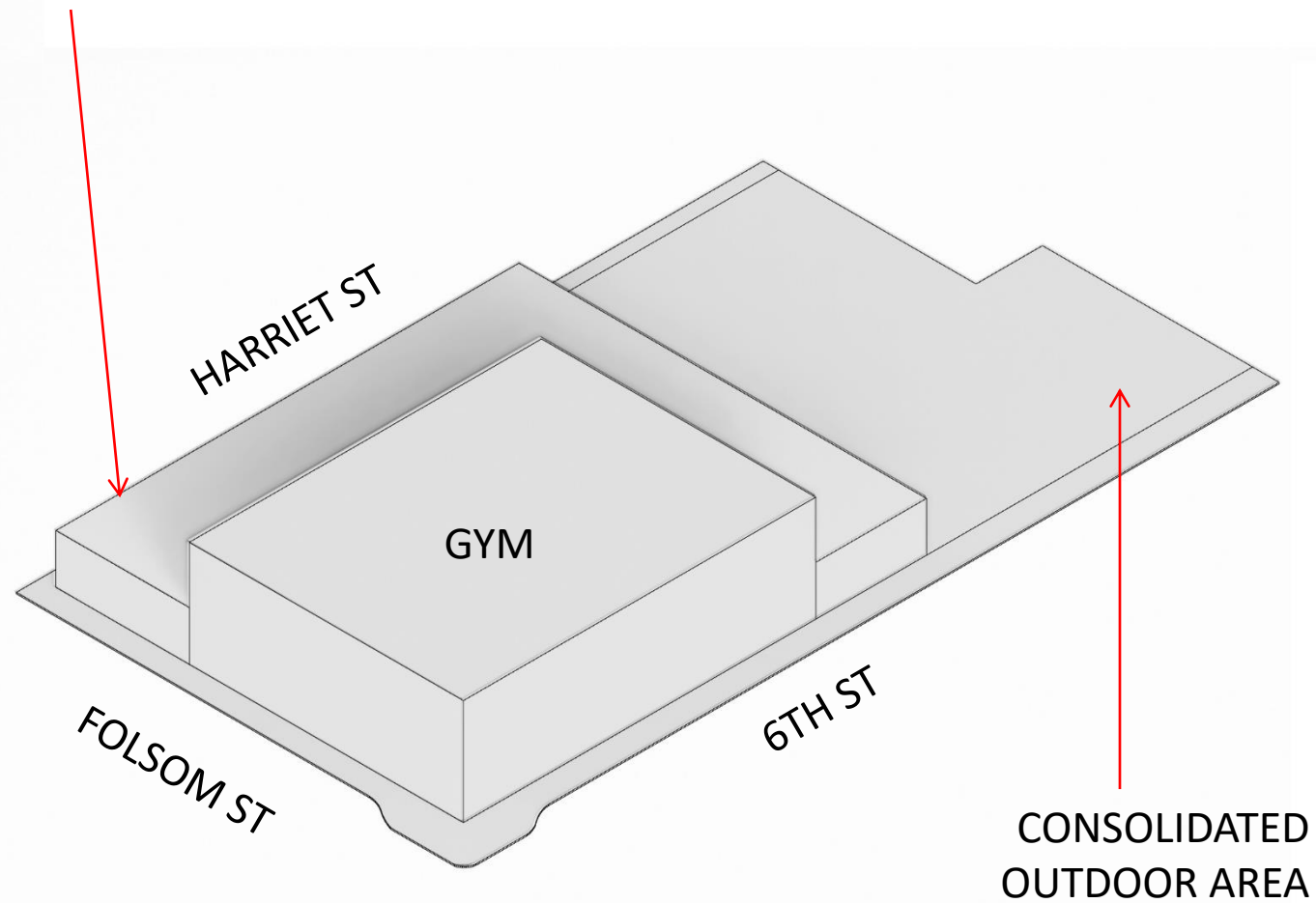
Pattern color chosen to work  
with Glass Type and harmonize  
with Concrete base

Grade at Street ⊕  
Varies from -2" to -2'

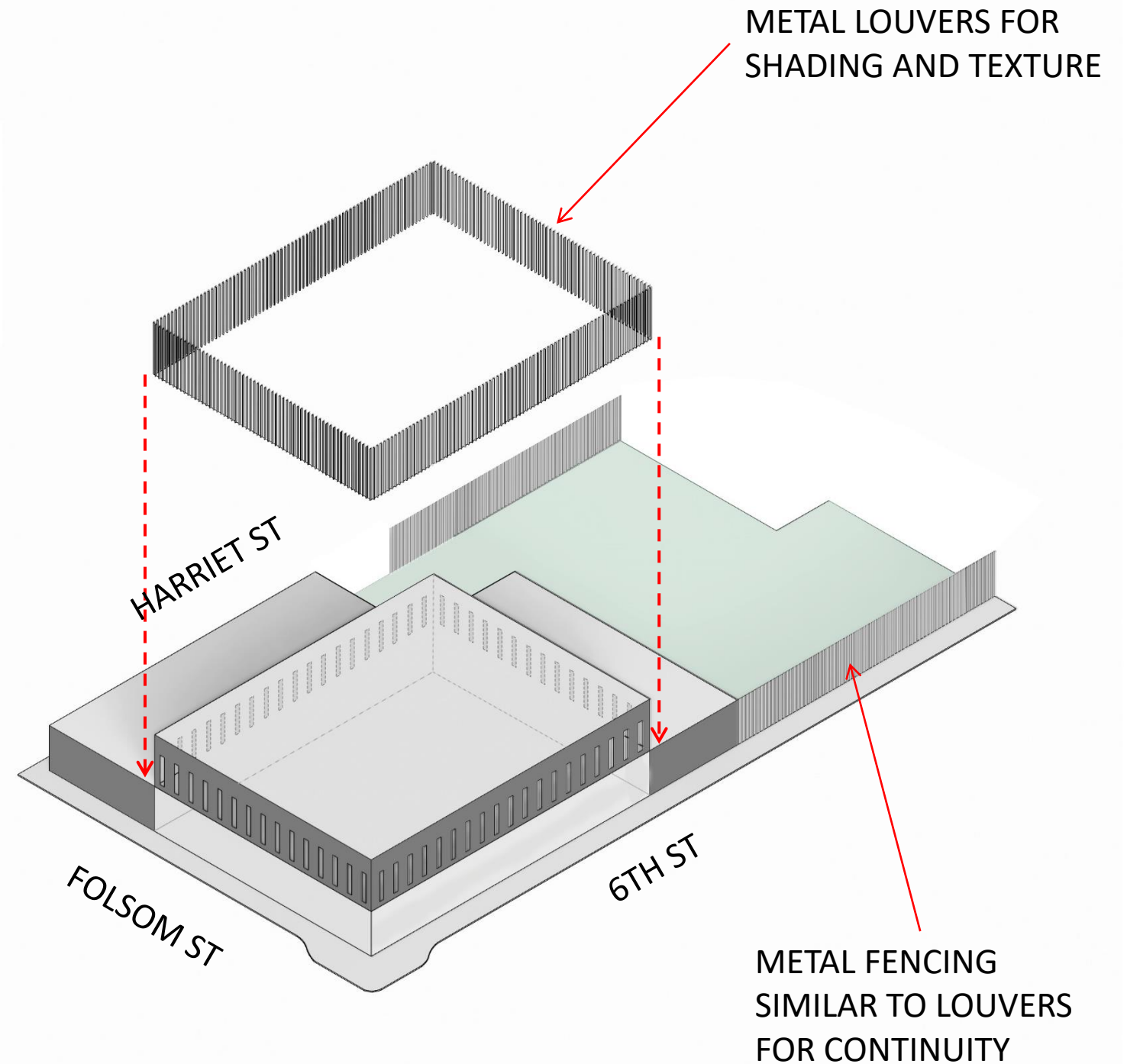
### DETAIL OF PATTERN

### 3. ARCHITECTURAL SCREEN - CONCEPT DIAGRAM

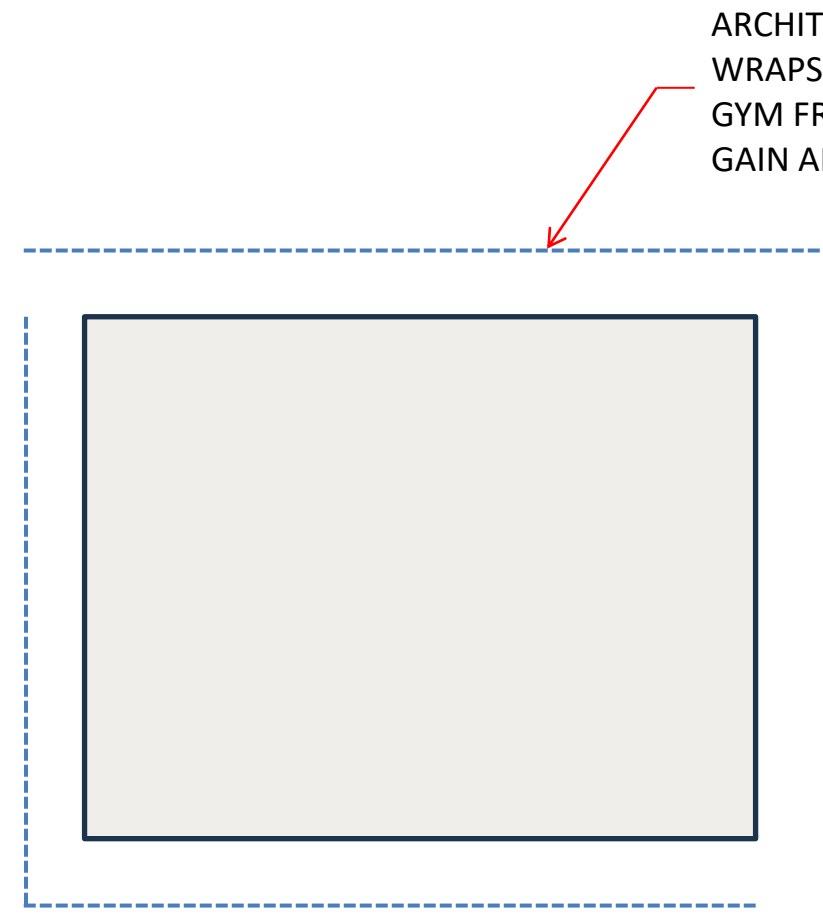
LOWER WINGS WITH LOBBY,  
MULTIPURPOSE, EXERCISE  
ROOMS WRAP TALLER TWO  
COURT GYM LOCATED ON  
CORNER



METAL LOUVERS FOR  
SHADING AND TEXTURE

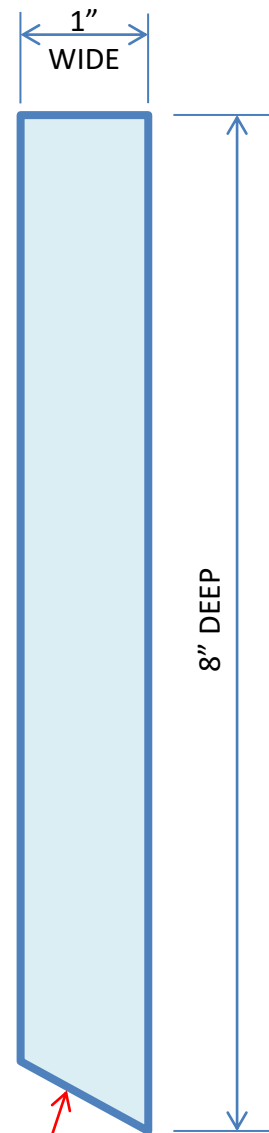


# 3. ARCHITECTURAL SCREEN - DESIGN REFINEMENT

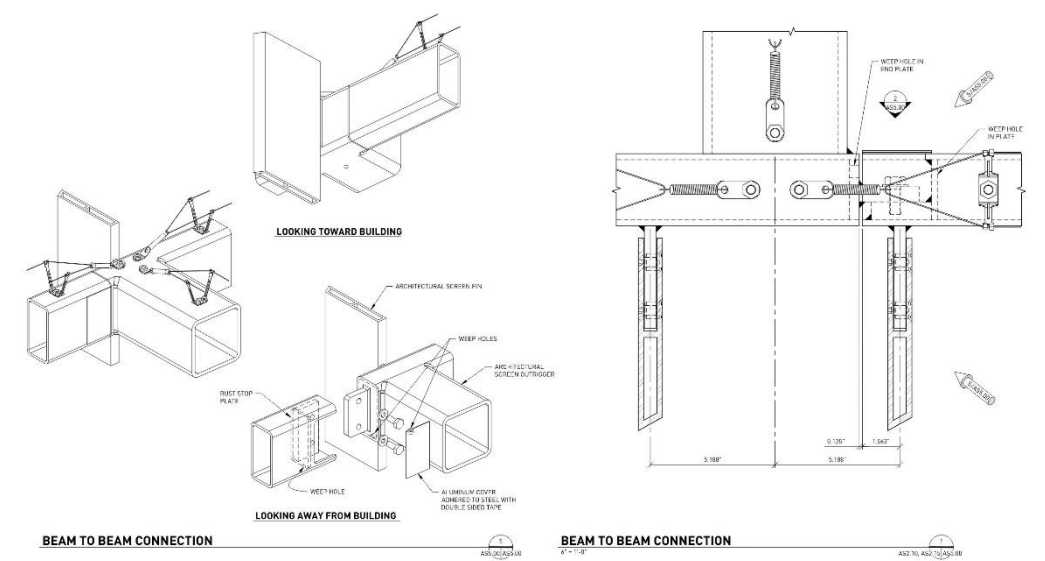
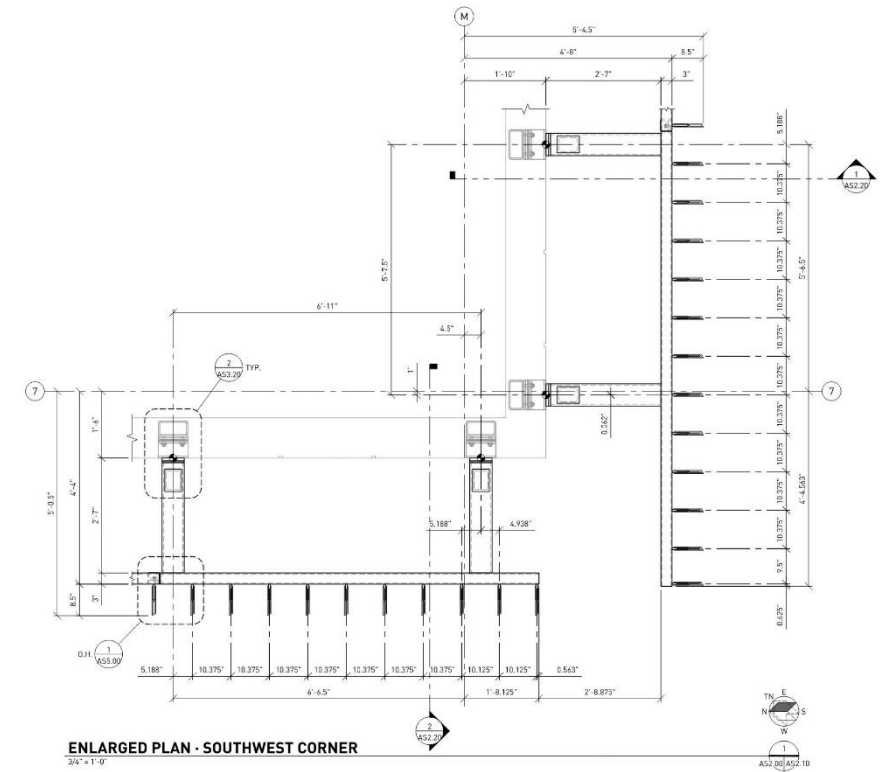


ARCHITECTURAL SCREEN WRAPS AND PROTECTS THE GYM FROM SOLAR HEAT GAIN AND GLARE

OPEN CORNERS ALLOW VISUAL UNDERSTANDING OF SUPPORT STRUCTURE



ANGLED END OF FIN REDUCES VISUAL "WEIGHT" AND ACTS TO CATCH THE LIGHT AS THE SUN TRACKS AROUND THE BUILDING



CONCEPTUAL PLAN (NOT TO SCALE)

FIN SHAPE

DETAIL RESOLUTION

## SCREEN RESOLUTION





**CORNER HARRIET AND FOLSOM**

MARK CAVAGNERO ASSOCIATES | KUTH RANIERI ARCHITECTS - GENE FRIEND RECREATION CENTER



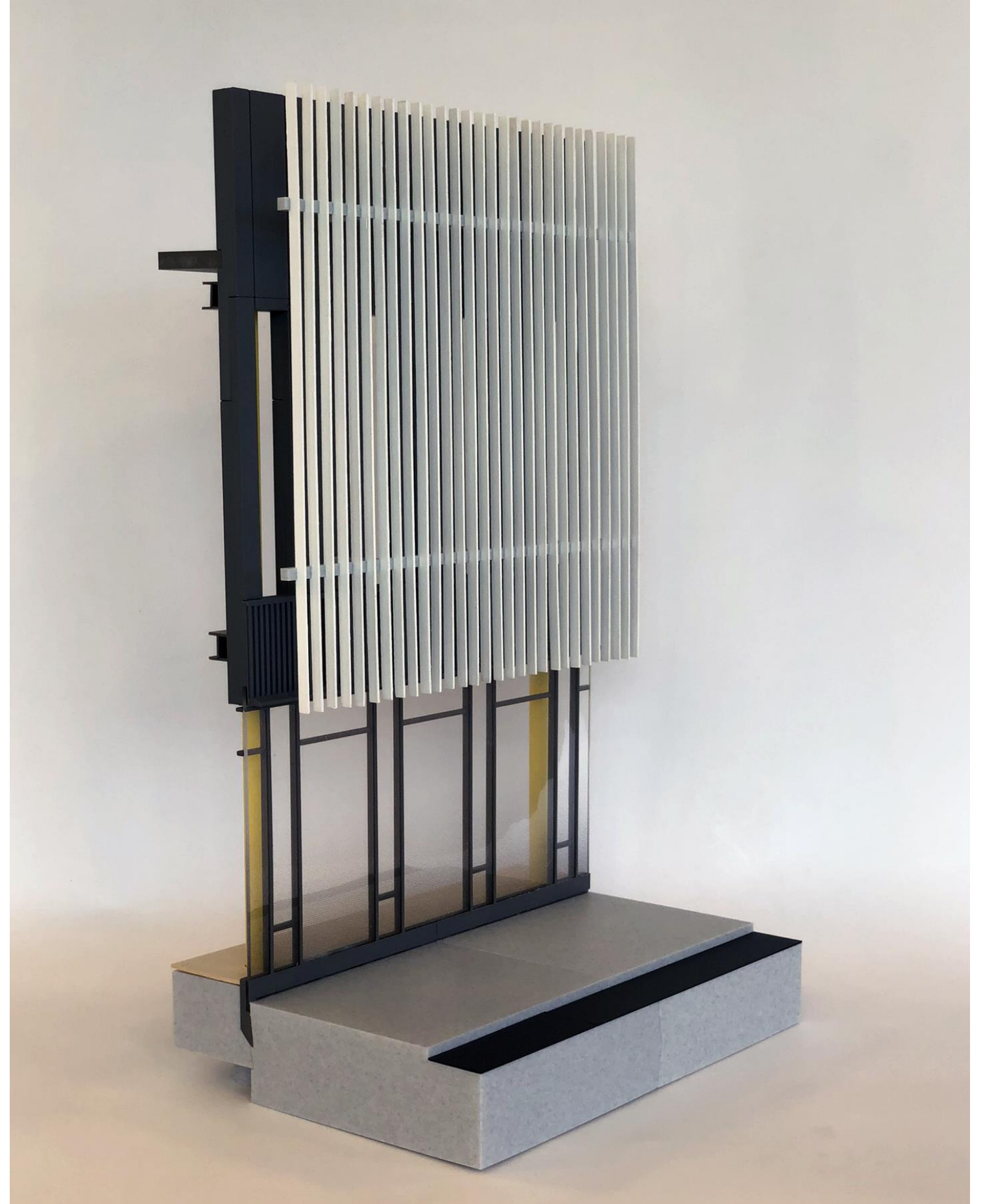
**CORNER 6<sup>TH</sup> AND FOLSOM - DAY**

MARK CAVAGNERO ASSOCIATES | KUTH RANIERI ARCHITECTS - GENE FRIEND RECREATION CENTER



**CORNER 6<sup>TH</sup> AND FOLSOM - NIGHT**

MARK CAVAGNERO ASSOCIATES | KUTH RANIERI ARCHITECTS - GENE FRIEND RECREATION CENTER

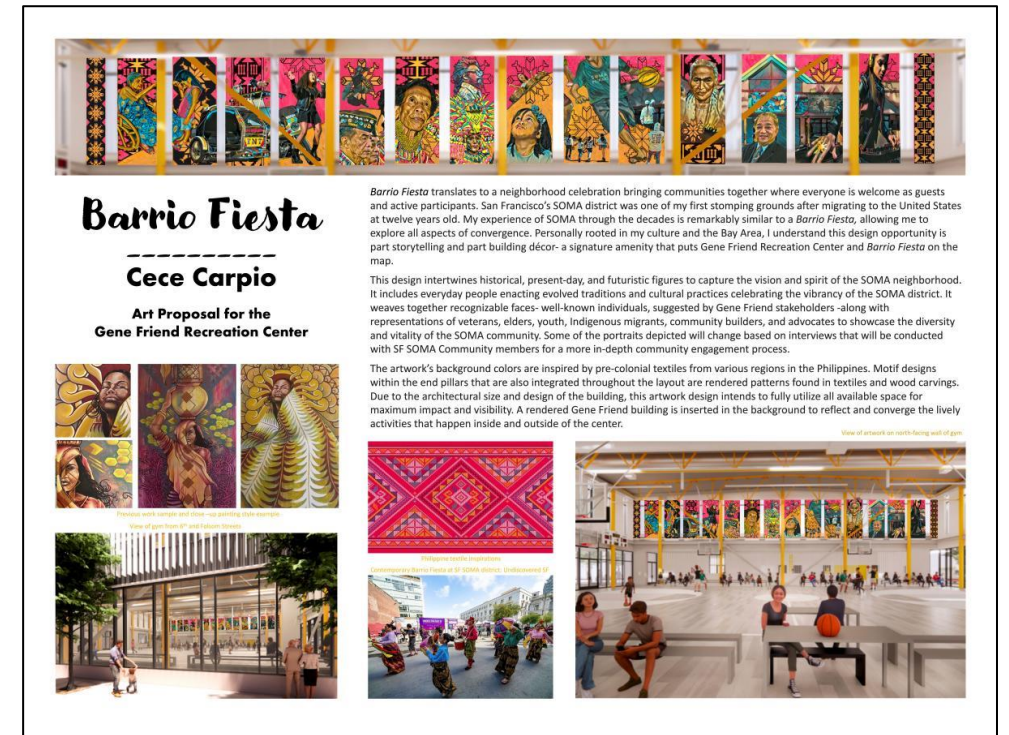
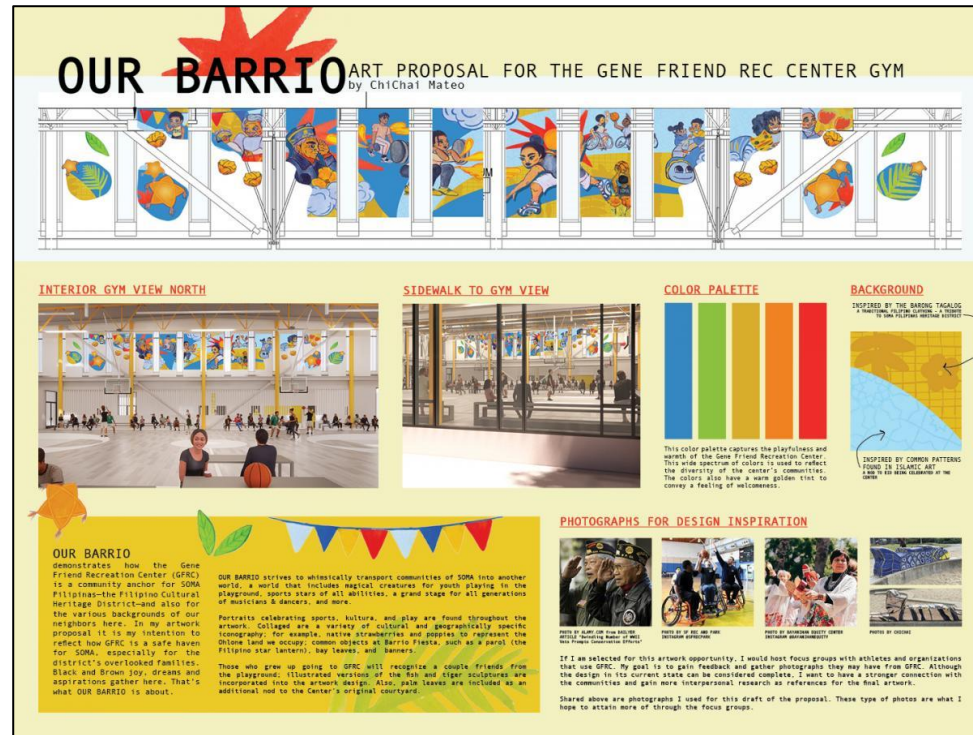


**PHYSICAL SCALE MODEL**

MARK CAVAGNERO ASSOCIATES | KUTH RANIERI ARCHITECTS - GENE FRIEND RECREATION CENTER

# PUBLIC ART AT INTERIOR

## GYMNASIUM PIECE - SHORTLISTED SUBMISSIONS:



## TIMELINE:

- PUBLIC COMMENT (2/5/24-3/1/24): 77 comments received
- PANEL 2: THIS MONTH
- VAC APPROVAL: APRIL
- RFP FOR HALLWAY 2D ART PROGRAM: SPRING 2024

## PUBLIC ART