

WORKFORCE DIRECTOR'S REPORT

Chad Houston, Director of Workforce Strategy
Office of Economic and Workforce Development

Prepared for Workforce Investment San Francisco (WISF)
Executive Committee



February 16, 2024

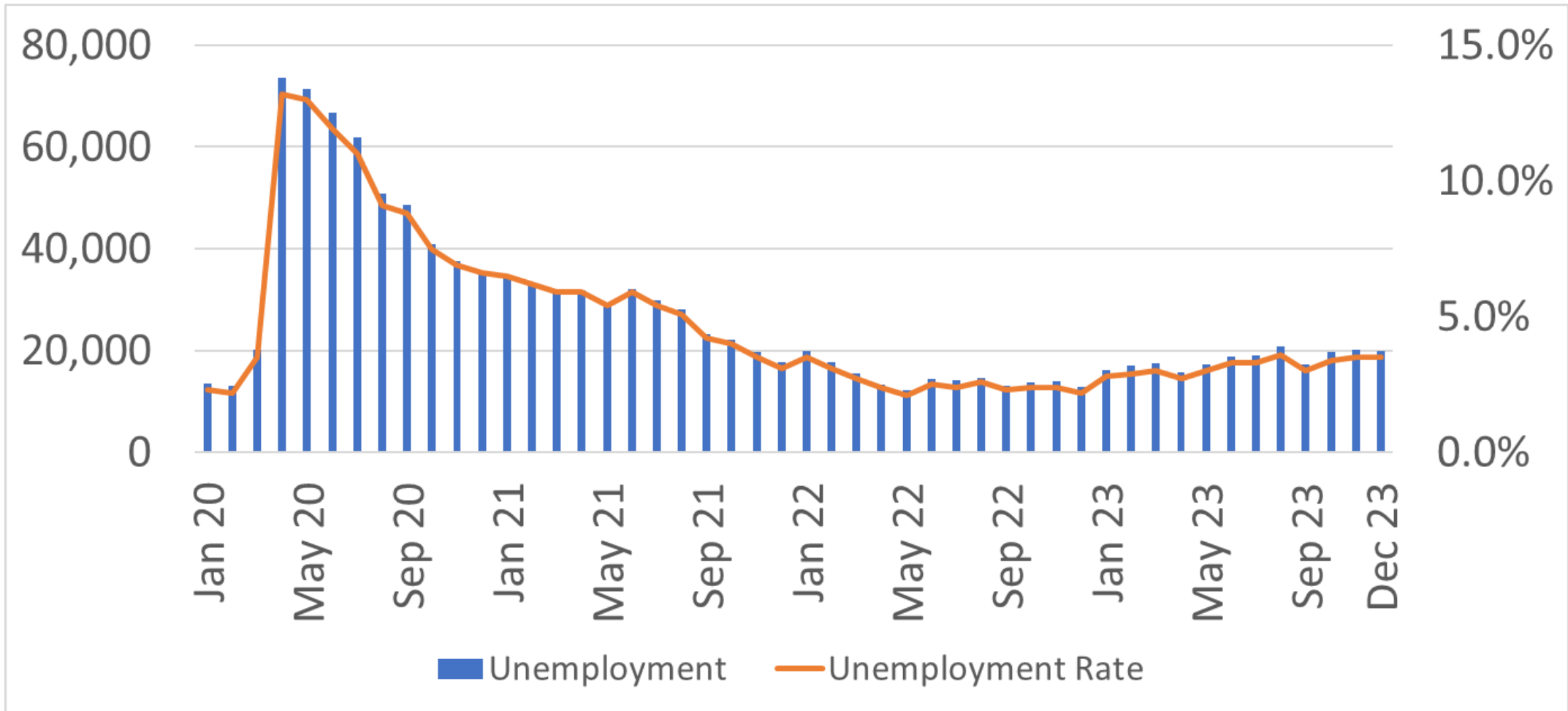
ECONOMIC INDICATORS – UNEMPLOYMENT RATE

SF Unemployment Rate		
SF County	Unemployment	Rate
Dec 2022	11,700	2.0%
Jan 2023	16,200	2.8%
Feb 2023	17,100	2.9%
Mar 2023	17,400	3.0%
Apr 2023	15,700	2.7%
May 2023	17,200	3.0%
Jun 2023	18,800	3.3%
Jul 2023	19,100	3.3%
Aug 2023	20,800	3.6%
Sep 2023	17,200	3.0%
Oct 2023	19,700	3.4%
Nov 2023	20,100	3.5%
Dec 2023	20,000	3.5%



Source: California EDD, US Bureau of Labor Statistics

ECONOMIC INDICATORS – UNEMPLOYMENT RATE



Source: CA EDD, US Bureau of Labor Statistics
*Preliminary

ECONOMIC INDICATORS – CHANGE IN EMPLOYMENT

Change in Area Employment Since December 2019 by Industry SF Metro District (SF + San Mateo Counties)				
Industry	Dec 2019	Dec 2023*	Change Since Dec 2019	% Change Since Dec 2019
Mining, Logging, & Construction	43,100	39,900	(3,200)	-7%
Manufacturing	39,100	38,900	(200)	-0.51%
Trade, Transportation, & Utilities	159,000	139,900	(19,100)	-12%
Information	100,700	122,800	22,100	22%
Financial Activities	87,400	88,700	1,300	1%
Professional & Business Services	297,900	312,800	14,900	5%
Private Education & Health Services	149,000	169,800	20,800	14%
Leisure & Hospitality	150,200	129,800	(20,400)	-14%
Other Services	41,700	39,400	(2,300)	-6%
Government	132,700	138,900	6,200	5%
Farm	1,600	2,000	400	25%
TOTAL	1,202,400	1,222,900	20,500	1.70%

Source: CA EDD, US Bureau of Labor Statistics
*Preliminary

ECONOMIC INDICATORS – CHANGE IN EMPLOYMENT

Change in Area Employment Since September 2023 by Industry SF Metro District (SF + San Mateo Counties)				
Industry	Sep 2023*	Dec 2023*	Change Since Sep 2023	% Change Since Sep 2023
Mining, Logging, & Construction	40,000	39,900	(100)	-0.25%
Manufacturing	38,900	38,900	-	0.00%
Trade, Transportation, & Utilities	136,900	139,900	3,000	2.19%
Information	124,800	122,800	(2,000)	-1.60%
Financial Activities	89,800	88,700	(1,100)	-1.22%
Professional & Business Services	313,500	312,800	(700)	-0.22%
Private Education & Health Services	166,100	169,800	3,700	2.23%
Leisure & Hospitality	129,300	129,800	500	0.39%
Other Services	39,000	39,400	400	1.03%
Government	137,000	138,900	1,900	1.39%
Farm	2,000	2,000	-	0.00%
TOTAL	1,217,300	1,222,900	5,600	0.46%

Source: CA EDD, US Bureau of Labor Statistics
*Preliminary

COMMUNITY HIGHLIGHTS

JOB CENTERS

Your First Stop to the Future.

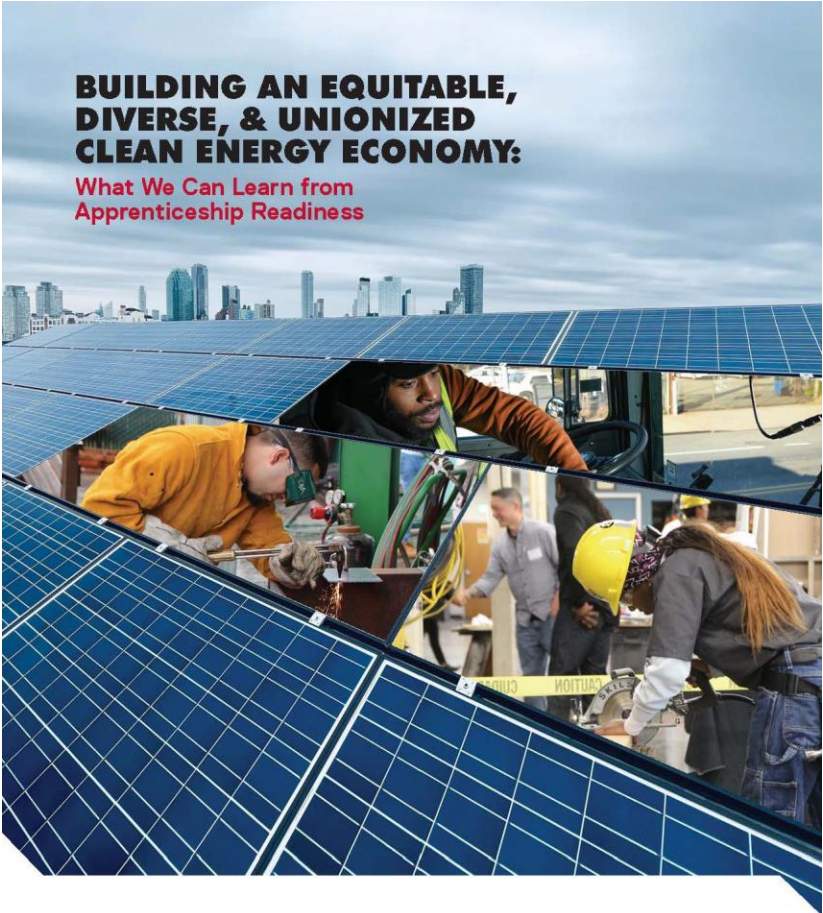


Strategic Priorities

Draft Strategic Priorities

1. Apprenticeship & Pre-Apprenticeship
2. Data Sharing
3. DEI / Prioritizing Vulnerable Community Members
4. Youth Workforce Programs
5. Coordination of Partners' Plans & Priorities

COMMUNITY HIGHLIGHTS



ILR Climate Jobs Institute



**SAN FRANCISCO
OFFICE OF ECONOMIC &
WORKFORCE DEVELOPMENT**

COMMUNITY HIGHLIGHTS



The poster features a blue background with a white megaphone icon on the left. At the top, it says 'SFRECPARK PRESENTS CITY JOB FAIRS 2024'. Below this, there is a grid of logos for various San Francisco departments including SFMTA, SFUSD, SFO, and others. The event schedule is listed at the bottom.

SFRECPARK PRESENTS
CITY JOB FAIRS 2024

JANUARY 6, 2024 10AM-1PM
Crocker Amazon Clubhouse
Moscow Street & Italy Street

JANUARY 20, 2024 10AM-1PM
Southeast Community Center
1550 Evans Avenue
In Partnership with SF Public Utilities Commission

JANUARY 27, 2024 10AM-1PM
Hamilton Recreation Center
1900 Geary Boulevard

FEBRUARY 3, 2024 10AM-1PM
County Fair Building
1199 Ninth Avenue in Golden Gate Park

The City and County of San Francisco is an Equal Employment Opportunity Employer. For more information, email RPD_recruitment@sfgov.org.



DISCUSSION

Chad Houston, Director of Workforce Strategy
Office of Economic and Workforce Development

Prepared for Workforce Investment San Francisco (WISF)
Executive Committee

