

Chinatown Public Health Center Renovation

Civic Design Review Phase III
Presentation

February 26, 2024



BUILDING DESIGN + CONSTRUCTION
SAN FRANCISCO PUBLIC WORKS



San Francisco Health Network
Chinatown Public Health Center

CDR PHASE 2 CONTINGENCIES

1. “Existing Dragon Relief Sculpture: Placement will be studied in tandem with public art staff, armature will not be visible if used, lighting as appropriate.”
2. “Exterior Signage: Characters that name the clinic be more human scale and are down lower on street level and will have bilingual version of English and Chinese.”

CDR PHASE 2 CONTINGENCIES

1. Existing Dragon Relief Sculpture
2. Exterior Signage



Proposed



Previous

CDR PHASE 2 CONTINGENCIES

“Characters that name the clinic be more human scale and are down lower on street level and will have bilingual version of English and Chinese.”

2. Exterior Signage



CDR PHASE 2 CONTINGENCIES

2. Exterior Signage

“Characters that name the clinic be more human scale and are down lower on street level and will have bilingual version of English and Chinese.”



Proposed



Previous

CDR PHASE 2 CONTINGENCIES

“Characters that name the clinic be more human scale and are down lower on street level and will have bilingual version of English and Chinese.”

2. Exterior Signage – Mason Street Entry

PUBLIC ART
PLACEHOLDER



CHINATOWN PUBLIC HEALTH CENTER

Mon, Wed to Fri: 8am –12pm, 1pm –5pm
1st, 2nd, 3rd & 5th Tue: 8am –12pm, 2pm –5pm
4th Tuesday: 8am –12pm only

DENTAL CLINIC

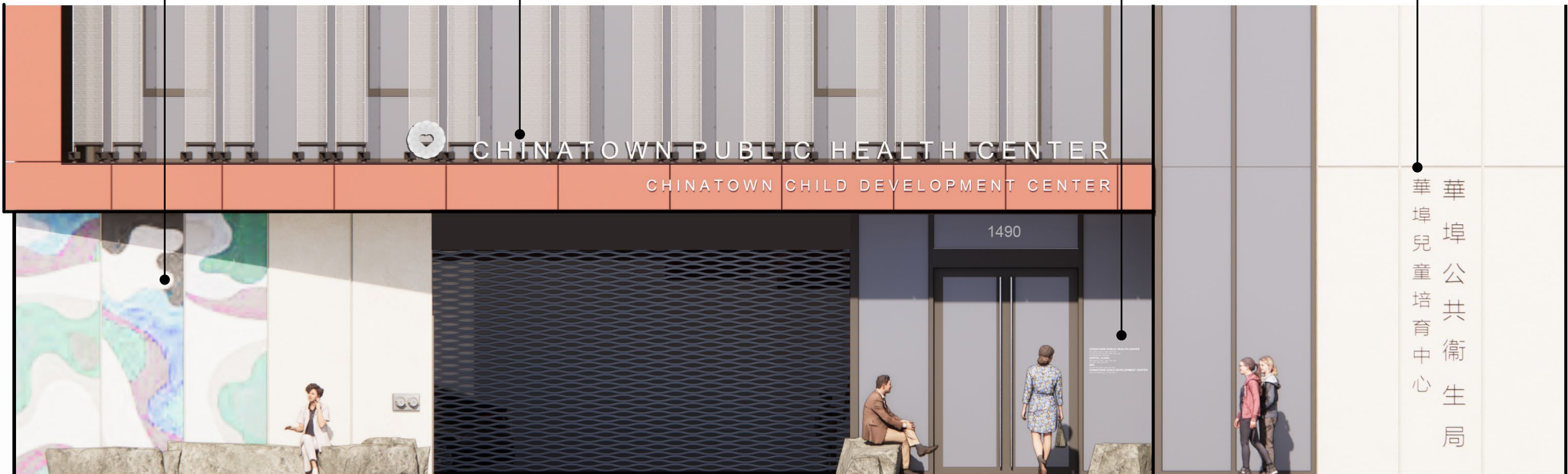
Mon, Wed to Fri: 8am –12pm, 1pm –5pm
Tue: 8am –12pm, 2pm –5pm

WIC

Tue, Thur & Fri: 8am –12pm, 1pm –5pm

CHINATOWN CHILD DEVELOPMENT CENTER

Mon to Fri: 8:30am-12pm, 12:30pm-5pm



華埠公共衛生局
華埠兒童培育中心

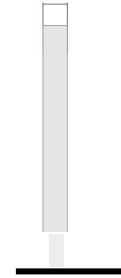


Top of Canopy Coping

Brushed Stainless Steel
bottom-mounted to M4 raceway with
counter-sunk screws

Raceway to be mounted flush to top of
canopy, aligned with front

.5"



5 1/2" MASON
ST. FACADE

7 1/2" & 10"
BROADWAY
FACADE



Brushed Stainless Steel

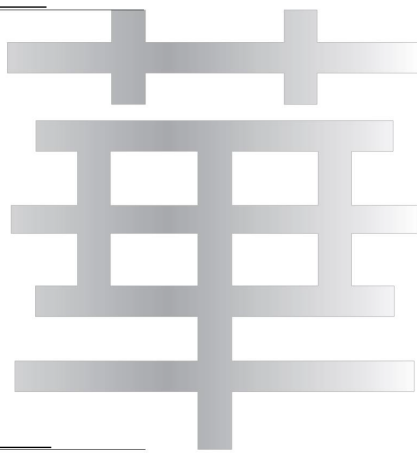
Pin-mounted flush to front of canopy
Or building façade

1/2"



11 1/2" & 8 1/2" MASON ST.
FACADE

10" & 7.5" BROADWAY
FACADE



Pin- Mounted flush to building
façade

Broadway Façade:
Brushed Stainless Steel

Mason St. Façade:
Dark Bronze Finish



6 SIDE VIEW
1" = 4"



7 [BS] BUILDING EXTERIOR SIGN - FRONT VIEW
1" = 4"

8 SIDE VIEW
1" = 4"

flush-mounted with 3M VHB
3M Metallic Silver vinyl backers installed on
transom glazing to obscure attachment

Thank You

