



San Francisco
Sheriff's Office

Custody Operations Division Overview



SERVICE

Protection of life / property / freedom and commitment to safety

PROFESSIONALISM

Remain impartial (react to behaviors, not race, not politics), Lead by example

PRIDE

Respect the star, embrace the responsibility, Acting with courage, honesty, and honor



San Francisco

Sheriff's Office

Division Projects

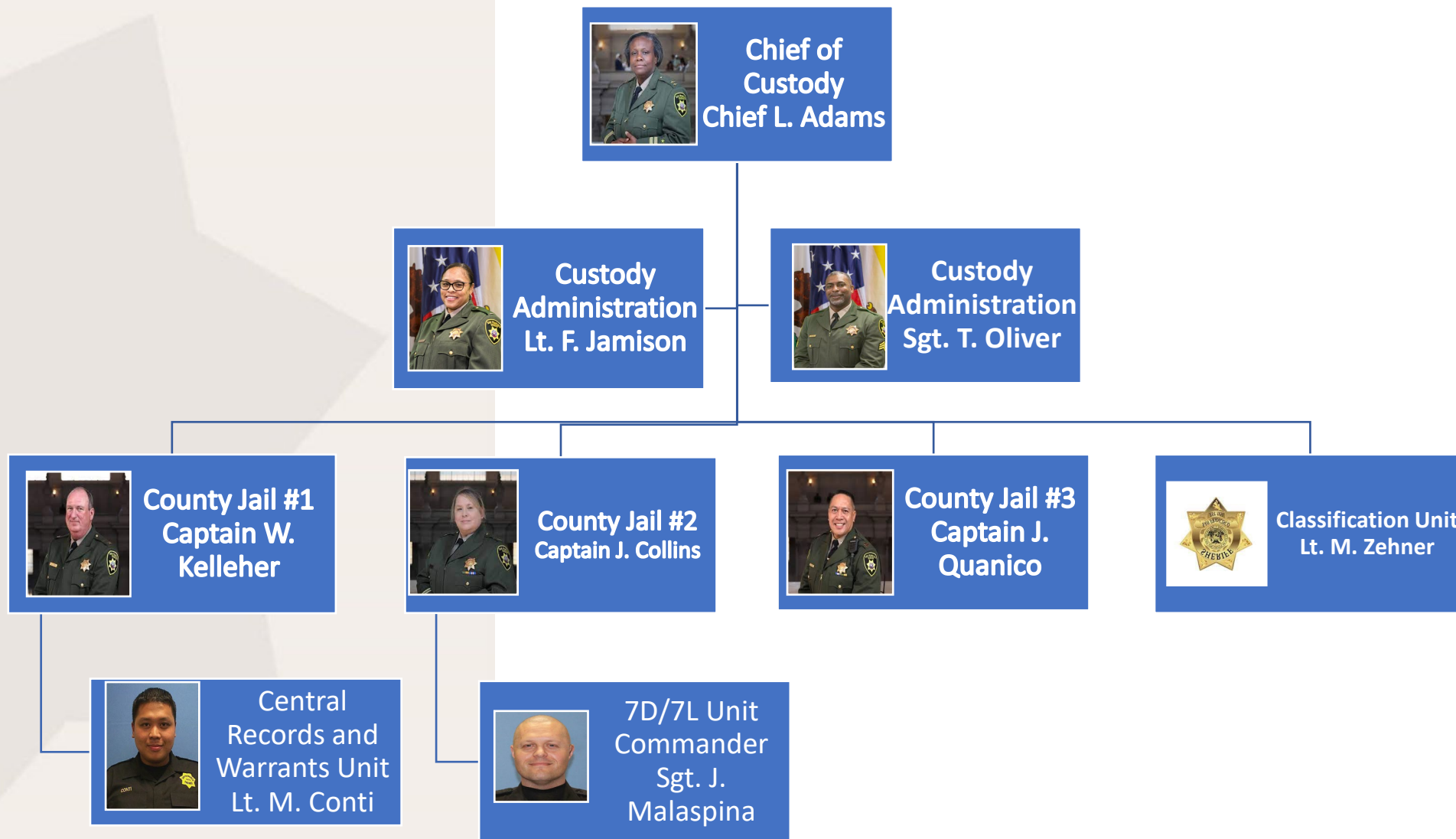
- Tablets (IPP)
- Video Visitation
- Increase Program Hours
- Facility Upgrades (Hardening)
- Improve Staff Spaces
- Staff Development
- Reduction of Ad Sep Population
- Increase Automation
- Free Phones
- No Surcharge Commissary

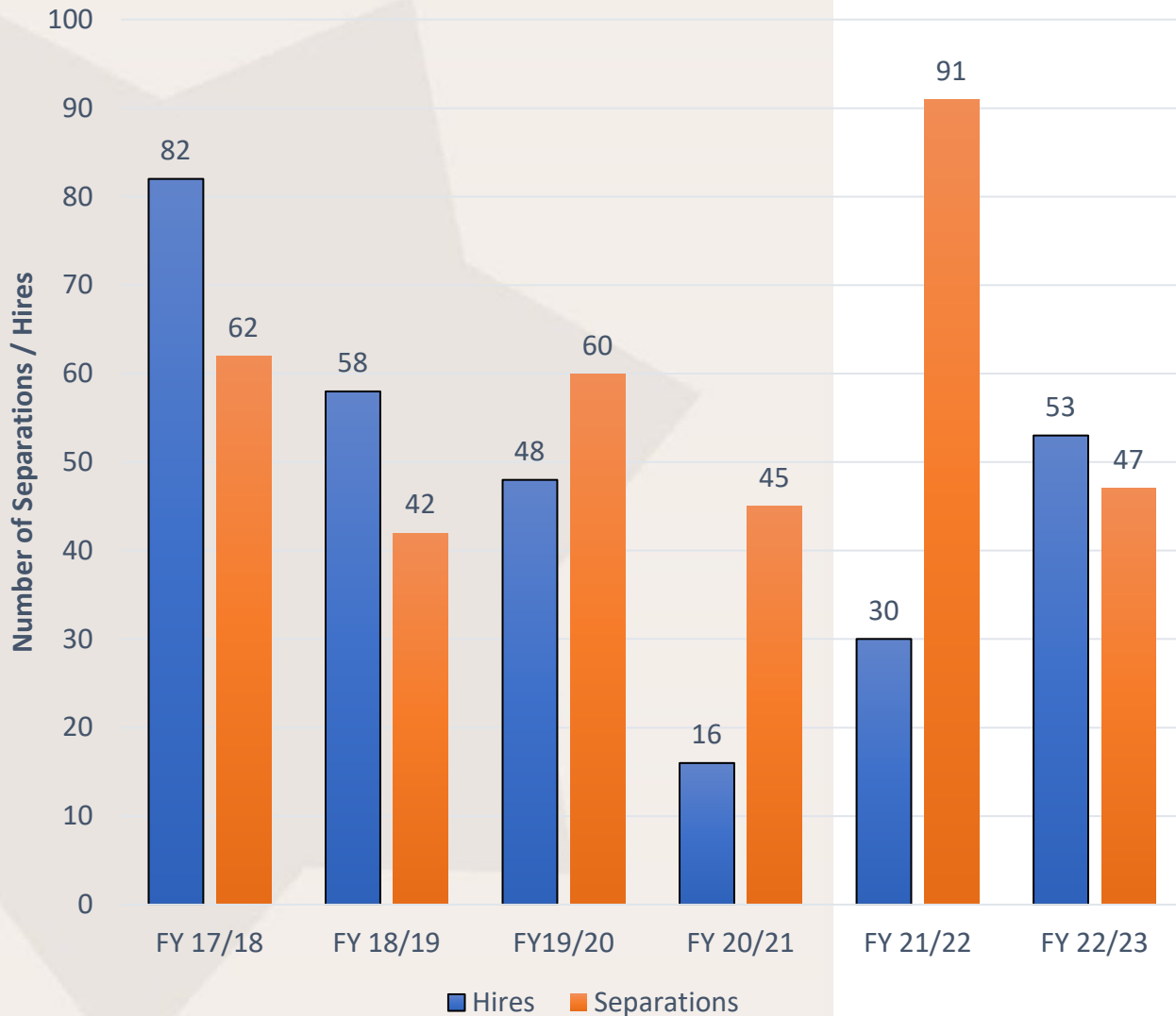
Challenges

- Staffing
- Resources Beyond Staffing
- Improving Occupied Spaces
- Project Management
- Culture Shifts
- Change in Custodial Population
- Competing Priorities
- Court Mandated Activities
 - Outside Air and Sunlight
 - Mandatory Lights Out Time



San Francisco Sheriff's Office





Sworn Hires and Separations

- For FY 22-23 sworn hires outpaced separations for the first time since FY 18-19
- Total sworn vacancies January 2020: 100
- Total sworn vacancies November 30, 2023: 195
- Support longevity/retention premiums for staff while we continue to hire.



San Francisco

Sheriff's Office

COUNTY JAIL #1

Facility Commander

Captain William Kelleher

425 7th Street (1st Fl)

Type I Facility

Rated Capacity = 298

Authorized Sworn = 83

Assigned Sworn = 54

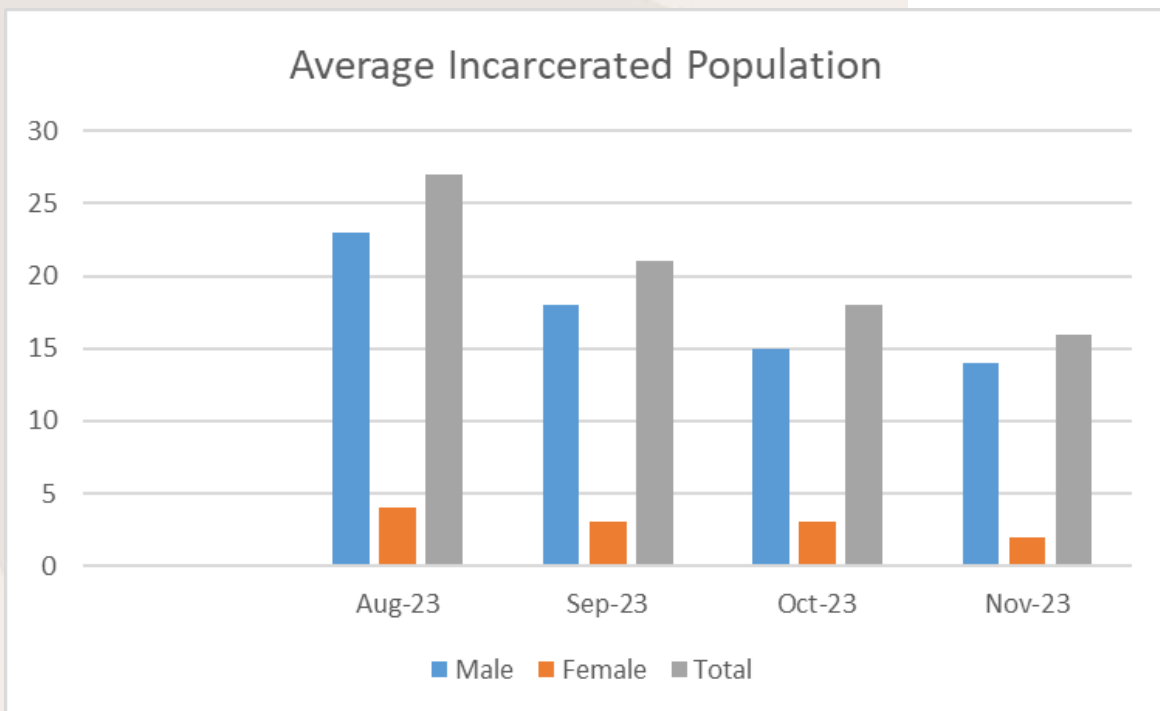




Average incarcerated population:

	Aug 2023	Sept 2023	Oct 2023	Nov 2023
Male	23	18	15	14
Female	4	3	3	2
Total	27	21	18	16

Average Incarcerated Population



- On Site: Jail Health Services, Jail Behavioral Health Services, Project O.R. (pre-trial release screening) and Classification
- Facility that books and releases persons from custody.
- Sobering cells for intoxicated persons
- JHS and JBHS triage screening
- Classification intake screening (includes housing considerations as part of booking process, PREA screening,
- Primary DNA collection point (Live Scan)
- State and Federal Identification Collection
- JHS Medical Interview and Assessment



San Francisco

Sheriff's Office

Central Records and Warrants Unit

Unit Commander

Lt. Mark Conti

850 Bryant St.

4th Floor Room 456

Authorized Sworn = 27

Assigned Sworn Staff= 25





Month/Year	Active Felony	Active Misd	Entered felony	Entered Misd	Cleared felony	Cleared Misd	Validation	DOJ Purge Quarterly	10-35 GSV	MUPS
Jan-23	12,800	4,416	342	216	431	273	346	464		
Feb-23	12,896	4,423	324	203	420	218	424			
Mar-23	12,871	4,364	392	263	489	328	440			
Apr-23	12,887	4,387	329	194	427	220	297	276		
May-23	12,877	4,361	373	195	477	254	340			
Jun-23	12,871	4,349	397	239	485	228	320			
Jul-23	12,892	4,328	355	198	505	299	338	318		
Aug-23	12,790	4,205	416	228	566	251	320		187	3
Sep-23	12,813	4,298	347	239	470	235	256		127	2
Oct-23	12,820	4,326	400	292	431	260	298	376	203	0
Nov-23	12,797	4,414	351	183	468	181	286		154	4

Function

- Maintain all incarcerated persons booking and record of incarceration.
- Maintain commitments and release calculations.
- Receive and record minutes for change in custody.
- Process Bail
- Pre-Arrestment Releases
- Post Arrestment Releases



San Francisco
Sheriff's Office

COUNTY JAIL #2

Facility Commander

Captain Jennifer Collins

425 7th Street

Type II Facility

Rated Capacity = 464

Authorized Sworn = 117

Assigned Sworn = 79

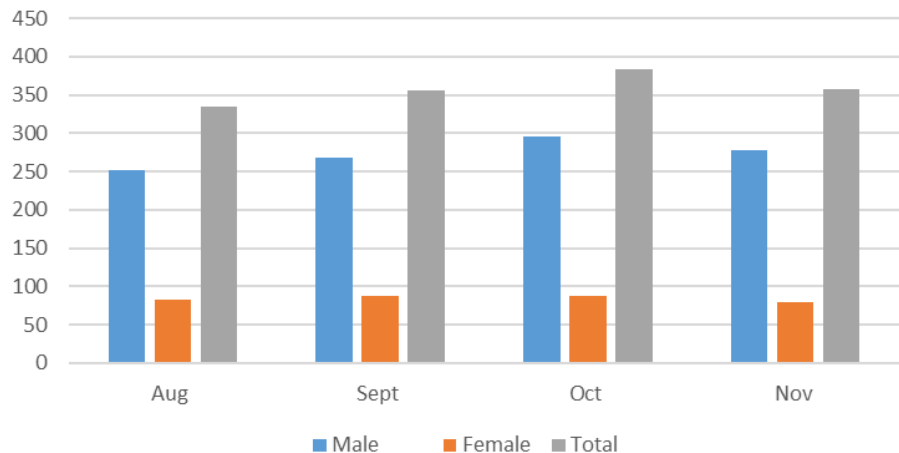




Average incarcerated population:

	Aug	Sept	Oct	Nov
Male	251	268	296	277
Female	83	88	87	80
Total	334	356	383	357

Average incarcerated population:



Housing facility, which consists of six pods:

- A Pod – open pod (56) - Transgender And SNY
 - B Pod – Female population (88)
 - Upper Level – Administrative Separation
 - Lower Level – Intake and general population
 - C Pod – Male, Female and TGN population (76)
 - Female Psychiatric Shelter Living
 - Medical housing
 - Psychiatric housing (observation)
 - Safety cells
 - D Pod – open pod (56) - Kitchen workers and General population
 - E Pod – Male population (88) - Administrative Separation and General population
 - F Pod – Male population (104) – Intake and Administrative Separation
- Gym is located on the fifth floor
 - Kitchen remodeled and reopened April 2023
 - Parent / Child visits – In person and zoom
 - In person visiting – Tuesday/Wednesday/Thursday/Saturday/Holidays



San Francisco
Sheriff's Office

ZSFGH 7D/7L

Unit Commander

Sergeant John Malaspina
1001 Potrero Ave ZSFGH,
7L

24 hours, 7 Days a Week

ADP = 5

Authorized Sworn = 27

Assigned Sworn = 21

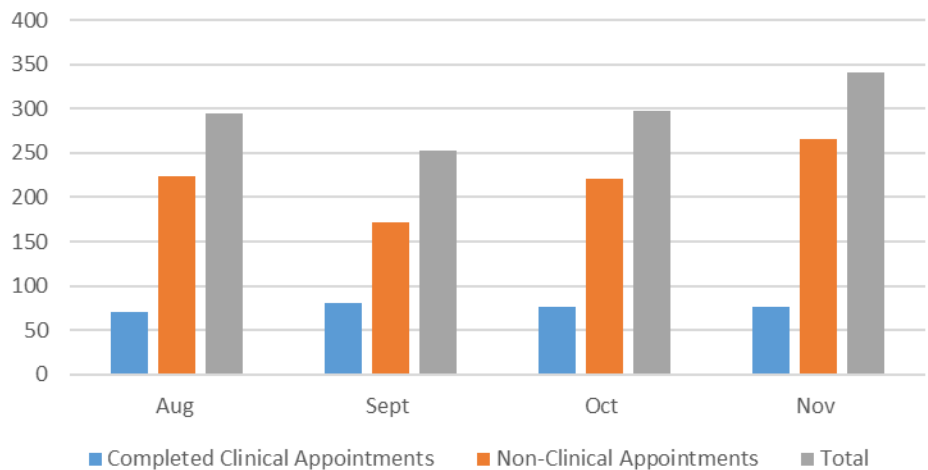




7D/7L Clinical Appointments

	Aug	Sept	Oct	Nov
Completed Clinical Appointments	71	80	77	76
Non-Clinical Appointments	224	172	221	265
Total	295	252	298	341

7D/7L Appointments:



- Housing for critical psychiatric incarcerated persons
- Management of SFSO staff detailed to hospital for security of custody
- Management of non-SFGH hospitalized custodies
- Transport for clinic appointment
- Incarcerated persons on an off ward (medical care)
- Incarcerated persons at PES (Psychiatric Emergency Services)
- Manage visits for incarcerated persons at SFGH



San Francisco

Sheriff's Office

COUNTY JAIL #3

Facility Commander

Captain James Quanico

1 Moreland Drive, San
Bruno

Type II Facility

Rated Capacity = 768
(not incl Annex)

Authorized Sworn = 259

Assigned Sworn = 158

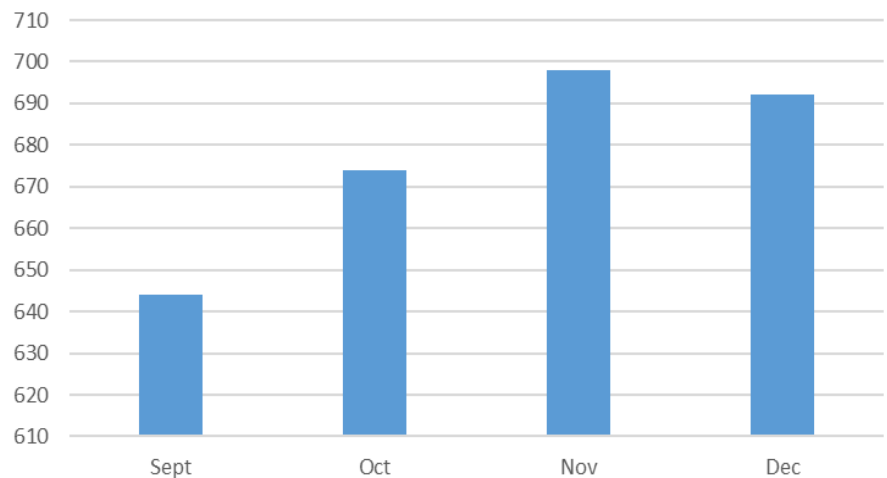




Average incarcerated population:

Sept	Oct	Nov	Dec
644	674	698	692

Average Incarcerated population:



Opened in 2005, County Jail #3 (formerly known as County Jail #5) is our largest facility, housing up to **768** people and offering some of the office's most extensive and original programs and classes. While located in San Bruno, County Jail #3 is under the jurisdiction of the City and County of San Francisco.

County Jail #3 has 8 Pods split into an A side and B side, totalling 16 housing units and houses only male custodies. The maximum number of inmates per pod is 48. Housing Units are designated for:

- General Population Housing
- Administrative Separation Housing
- Male Psychiatric Sheltered Living Unit PSLU
- Disciplinary Separation
- Non-Designated Housing



CJ#3 ANNEX OPENED ON OCTOBER 27, 2023

- Closed two jail at 850 Bryant St.
- In 2015 Board of Supervisors rejected 384- bed facility
- The City gave back the \$80 million for a new facility
- Mayor wants Safe Streets
- DMAAC
- APEC Conference
- Increased general population
- Increased Mental Health incarcerated persons

AA & BB DORM 50 Max Occupancy





San Francisco
Sheriff's Office

Classification

Unit Commander

Lt. Michael Zehner

20 hours, 7 Days a Week

Authorized Sworn = 26

Assigned Sworn = 17





Current Jail Population

- Jail population 1165.
- 334 custodies identified as being affiliated with a security threat group.
- Approximately 172 custodies have been identified by JBHS as having a mental health issue vs. behavioral disorders.

Administrative Separation (Ad-Sep)

- 136 inmates in administrative separation.
- Conduct review twice a month.
- 10 to 15 inmates are removed from administrative separation a month.
- 15 to 20 inmates are placed in administrative separation a month.

It is the mission of the SFSO Classification Unit to:

- Promote Safety in the jails.
- Develop inmate management plans to minimize identifiable risks.
- Determine the least restrictive housing necessary for inmates in the County Jail System.
- Maintain an active security threat intelligence mechanism to promote safety for everyone.
- Liaison with other law enforcement and correction agencies.
- Maintain confidential files.
- Maintain ongoing communication with deputized staff to promote the exchange of information on current criminal O.
- Ensure compliance with statutory, policy, and procedure requirements relating to the classification of inmates.



Jail Population January 2024 Report

Average Daily Population

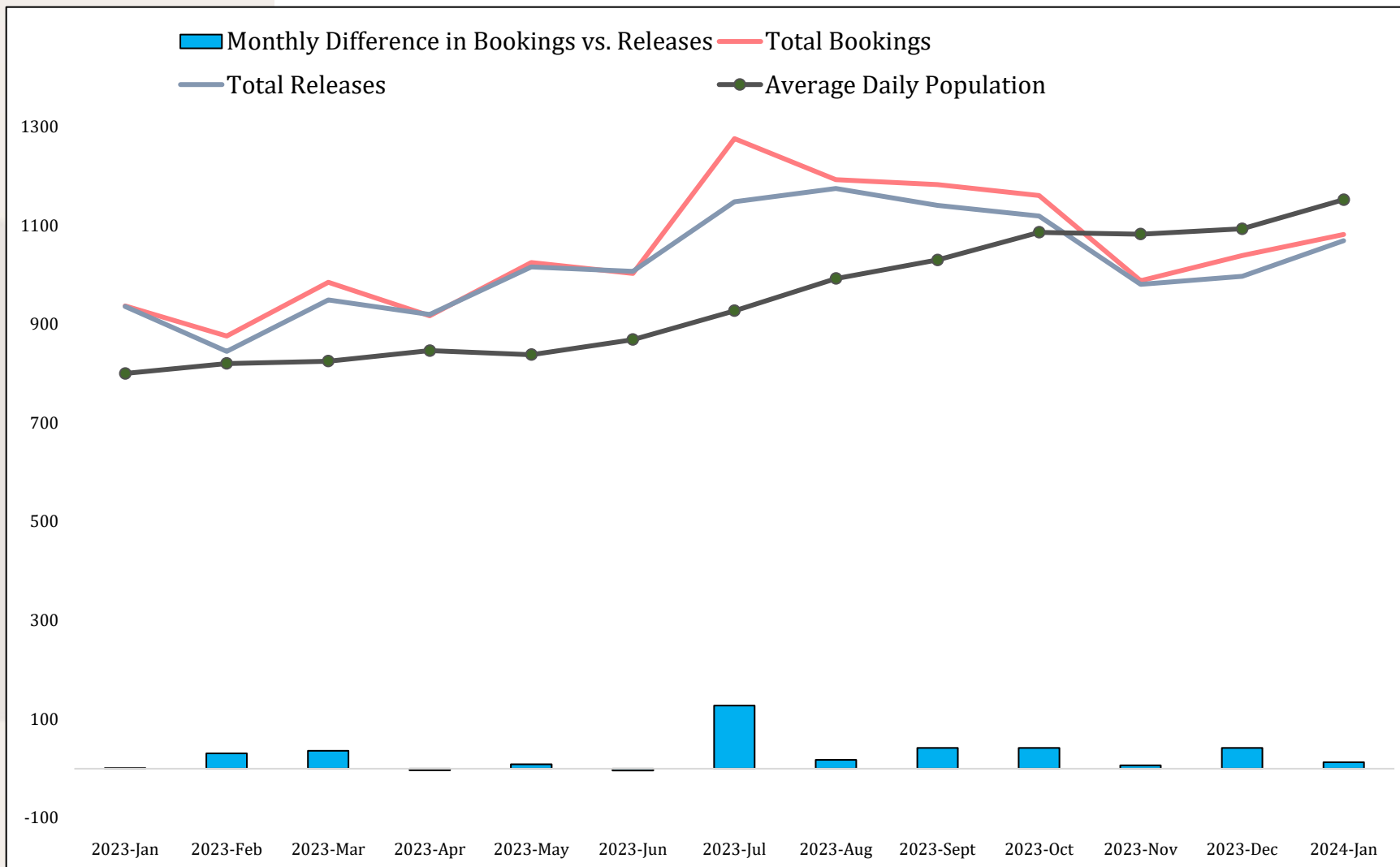
This Month	Change from last month	Change from last year
1152	5% ↑	44% ↑

Bookings

This Month	Change from last month	Change from last year
1082	4% ↑	16% ↑

Releases

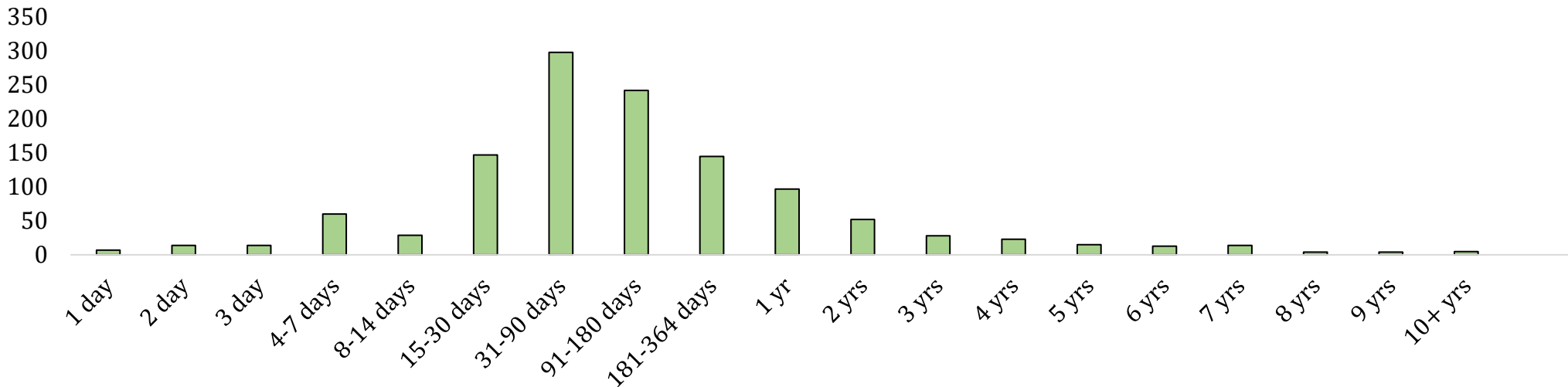
This Month	Change from last month	Change from last year
1069	7% ↑	14% ↑





Jail Population January 2024 Report

Time in custody snapshot population on January 16th, 2023



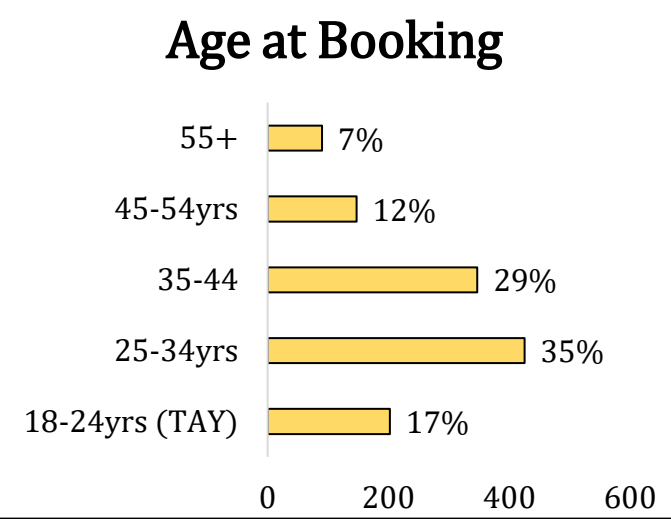
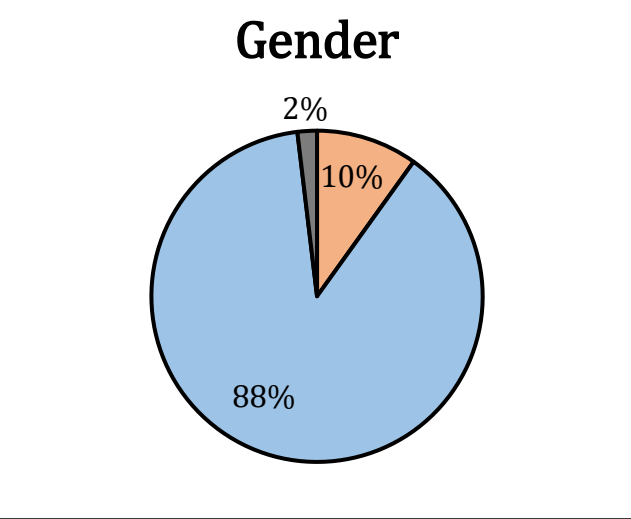
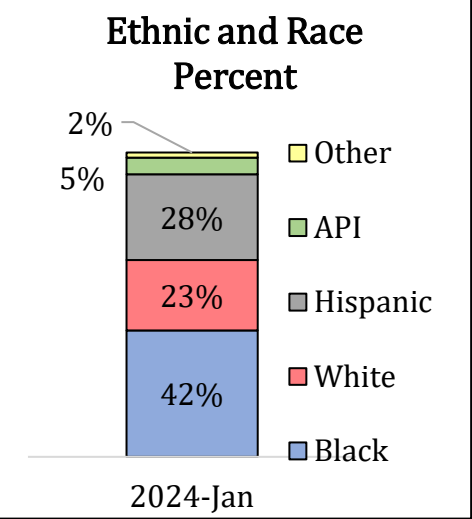
Population
1211

Average time in
 custody **295**

Median time in
 custody **83**

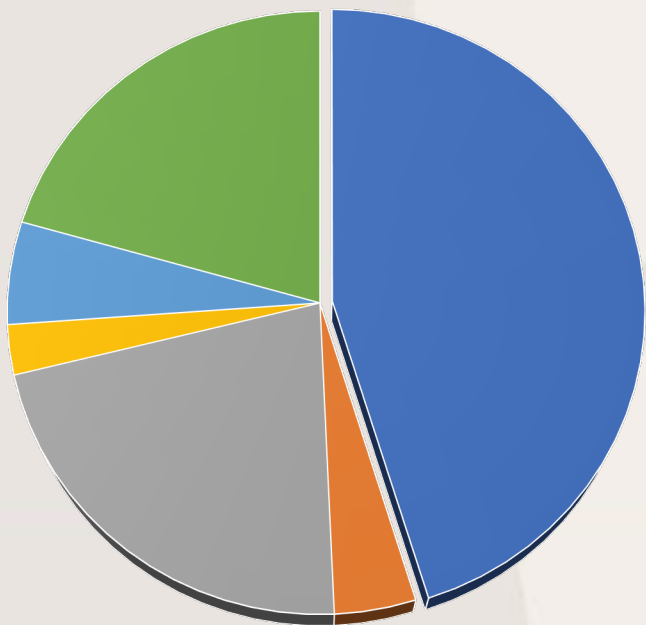
Median age at
 booking **35**

Jan	Last 12 Months
Black	42% Low 39 High 43
White	23% Low 19 High 24
Hispanic	28% Low 24 High 28
API	5% Low 5 High 7
Other	2% Low 1 High 7





Special Housing Population



- Validated Gang/ Security Threat Group
- Gang Drop outs
- Ad-Sep Status
- Protective Custody
- Medical Housing
- Psychiatric

- As of February 26, 2024 – the SFSO County Jail Population is 1165
 - 90.3% Male
 - 8.4% Female
 - 1.2% TGN (Transgender, Gender- Variant, Non-Binary)
- Special Housing Population
 - 25.1% Validated Gang/Security Threat Group
 - 3.5% Gang Drop Outs
 - 11.6% Administrative Separation Status
 - 5.5% Protective Custody
 - 2.3% Medical Housing
 - 13.6% Psychiatric Sheltered Living Units/ Psych Ad Seg

Approximately 10 people on the waitlist for Psychiatric Housing