



PAUNAWA NG NAKAPLANONG PAGHINTO NG SERBISYO NG KURYENTE

Petsa: _____

Oras: _____

Ang mga apektadong Pasilidad ng Treasure Island ay kabilang ang:

Ang Mga Tauhan ng Mataas na Boltahe ng San Francisco Public Utilities Commission (SFPUC) ay dapat gumawa ng kailangang mga pagkukumpuni upang masiguro ang maaasahang serbisyo sa lahat ng parokyano. Upang ligtas na magawa ang trabahong ito, kailangan ng mga tauhan na pansamantalang ihinto ang iyong serbisyo ng kuryente. Gagawin ng mga tauhan ang makakaya upang paliitin hanggang maaari ang haba ng paghinto ng serbisyo.

Kung ikaw ay isang Nagpapaupa na may (mga) umuupa sa mga lugar na nakalista sa itaas at sinisingil ka ng SFPUC sa iyong pangalan, **responsibilidad mo** na bigyan ng paunawa ang (mga) umuupa ng tungkol sa nakaplanong paghinto ng serbisyo.

Ang di-ligtas na mga kondisyon ng panahon o anumang di-inaasahang emerhensiya ay magtutulak sa mga Tauhan ng Mataas na Boltahe na kanselahin ang trabaho sa huling minuto at hindi magagawa ng mga tauhan na bigyan ka ng paunawa ng pagkanselang ito. Gayunman, tatanggap ka ng paunawa ng binagong petsa at oras.

BABALANG PANGKALIGTASAN: Ang mga residente ay hindi dapat gumamit ng mga generator sa ilalim ng anumang pangyayari nang hindi nalalaman ng tagapagkaloob ng Pabahay. Kung ikaw ay gagamit ng generator sa panahon ng paghinto ng serbisyo dapat mong ihiwalay ang iyong generator mula sa sistema ng SFPUC. Ang kabiguang gawin ito ay hindi lamang makakapinsala sa iyong generator kundi maaari ring maging dahilan ng seryosong pinsala sa mga tauhan ng kuryente. Humihingi ng paumanhin ang SFPUC para sa abalang ito at nagpapasalamat sa iyong pang-unawa.

Kung ikaw ay umaasa sa mga kagamitang sumusuporta sa buhay, mangyaring isaalang-alang ang mga sumusunod:

HUMANAP NG PANGHALILING TIRAHAN SA ISANG LOKASYON NA HINDI APEKTADO NG PAGHINTO.

- **Ang mga computer at ibang elektronikong kagamitan** ay partikular na sensitibo sa paghinto ng serbisyo ng kuryente. Malakas na inirekomenda namin ang paghugot sa kagamitang ito mula sa saksakan bago ang panahon ng paghinto.
- **Ang mga sistemang panseguridad, orasan, pantakda ng oras ng patubig,** at katulad na kagamitan ay malamang na mangailangan ng muling pagbabalik sa kaayusan pagkakumpleto ng paghinto.

Para sa impormasyon tungkol sa kung paano dapat **pangalagaan ang mga nasisirang pagkain** sa iyong refrigerator o freezer, bisitahin ang website www.foodsafety.gov/blog/power_outages.html

NOTICE OF PLANNED ELECTRIC SERVICE INTERRUPTION

Date: _____

Time: _____

Affected Areas of Treasure Island Facilities include:

The San Francisco Public Utilities Commission (SFPUC) High Voltage Crew needs to make necessary repairs to ensure reliable service to all customers. In order to perform this work safely, the crew needs to temporarily interrupt your electric service. The crew will do its best to minimize the length of the service interruption.

If you are a Landlord with tenant(s) in the areas listed above and the SFPUC bill is in your name, **it is your responsibility** to notify the tenant(s) of the planned service interruption.

Unsafe weather conditions or any unforeseen emergency will require the High Voltage Crew to cancel the work at the last minute and the crew will be unable to notify you of this cancellation. However, you will receive notification of the rescheduled date and time.

SAFETY WARNING: Residents should not use generators under any circumstances without the knowledge of the Housing provider. If you use a generator during the service interruption you must isolate your generator from the SFPUC system. Failure to do so will not only damage your generator but can cause serious injury to electric crew personnel. The SFPUC apologizes for this inconvenience and thanks you for your patience.

If you rely **on life support devices**, please consider the following:

FIND ALTERNATE LODGING AT A LOCATION NOT AFFECTED BY THE INTERRUPTION.

- **Computers and other electronic equipment** are particularly sensitive to power interruption. We highly recommend unplugging this equipment before the shutdown period.
- **Security systems, clocks, irrigation timers,** and similar equipment will likely require resetting after the shutdown is completed.

For information about how to **safeguard perishable foods** in your refrigerator or freezer, visit the website www.foodsafety.gov/blog/power_outages.html



AVISO DE INTERRUPCIÓN PROGRAMADA DE SERVICIO ELÉCTRICO

Fecha: _____

Hora: _____

Las Áreas Afectadas de la Instalación de Treasure Island incluyen:

El Equipo de Obreros de Alto Voltaje de la Comisión de Utilidades Públicas de San Francisco (SFPUC por sus siglas en inglés) necesita hacer reparaciones para asegurar un servicio fiable para todos sus clientes. Para realizar estas obras de manera segura, el equipo necesita interrumpir temporalmente su servicio eléctrico. El equipo se esforzará para mantener la interrupción de servicio a un mínimo.

Si usted es un propietario con inquilino(s) dentro de las áreas listadas anteriormente y la factura de la SFPUC está a su nombre, **es su responsabilidad** notificar a cada inquilino de esta interrupción programada de servicio.

Condiciones climáticas o cualquier otra emergencia imprevista requerirá que el equipo de obreros de Alto Voltaje cancele las obras a último momento y el equipo no será capaz de avisarle de dicha cancelación. Sin embargo usted recibirá una notificación sobre la fecha y horario de la reprogramación de las obras.

AVISO DE SEGURIDAD: Los residentes no deberán usar generadores bajo ninguna circunstancia sin el conocimiento del propietario. Si usted usa un generador durante la interrupción de servicio, debe aislar su generador del sistema de la SFPUC. De no hacerlo, no solo dañará su generador si no que puede causar heridas graves al personal del equipo eléctrico. La SFPUC le pide disculpas por estas molestias y le agradece de antemano por su paciencia.

Si usted depende de algún **dispositivo de soporte de vida**, por favor considere lo siguiente:

ENTRE VIVIENDA ALTERNATIVA EN UNA UBICACIÓN NO AFECTADA POR LA INTERRUPCIÓN.

- **Las computadoras y otro equipo electrónico son particularmente sensibles a la interrupción de energía.** Le recomendamos sumamente que desconecte este equipo antes del periodo de interrupción.
- **Los sistemas de Seguridad, relojes, cronómetros de riego, y otros equipos similares seguramente requerirán reprogramación después que termine la interrupción.**

Para información sobre como **resguardar alimentos perecederos** dentro de su refrigerador o congelador, visite la página Web www.foodsafety.gov/blog/power_outages.html

暫停計劃供電服務通知

日期: _____

時間: _____

金銀島設施受影響地區包括：

三藩市水利局（SFPUC）高壓機組人員需要做必要的維修，以確保為所有顧客提供可靠的服務。為安全執行此項工作，機組人員需要暫時停止你的電力服務。工作人員會儘力將暫停此服務的時間減至最少。

如你是房東，有住客住在上述的地區而三藩市水利局的帳單是以你的名字發出，**你有責任**通知住客計劃暫停此服務之事宜。

如天氣情況不安全或有任何未能預料到之緊急情況，高壓機組人員可能在最後一分鐘取消此工作，而他們將無法通知你此取消行動。但是，你將會收到重新安排時間和日期的通知。

安全警告：在任何情況下未經屋主知曉前，住客不應使用發電器。如果你在服務暫停的時間使用發電器，你必須將你的發電器和三藩市水利局的系統分開。如沒有這樣做你不只可損壞你的發電器同時可導致電力組工作人員嚴重受傷。三藩市水利局對此造成之不便謹以致歉，並感謝你的耐心。

如果你**依賴維生儀器**，請考慮以下方法：

在暫停供電之前在另一個地點找住宿

- **電腦和其他電子儀器**對電力中斷特別敏感。我們極力建議你在關閉期間將這些設備的電擊除出。
- **保安系統，鐘，灌溉計時器**和類似的設備可能需要在暫停供電結束之後重新設定。

有關如何保持你冰箱或冷藏庫易腐食物的安全，請上網：www.foodsafety.gov/blog/power_outages.html



PAUNAWA NG PAGHINTO NG SERBISYO NG LIKAS NA GAS

Petsa: _____

Oras: _____

Ang mga apektadong Pasilidad ng Treasure Island ay kabilang ang:

Ang San Francisco Public Utilities Commission (SFPUC) ay mag-iinstala ng bagong kagamitan at/o pagpapanatili ng pagganap sa iyong lugar. Ito ay tutulong sa SFPUC na masiguro ang maaasahang serbisyo sa lahat ng parokyano. Upang ligtas na magawa ang trabahong ito, kailangan ng mga tauhan na pansamantalang ihinto ang iyong serbisyo ng likas na gas. Gagawin ng mga tauhan ang makakaya upang paliitin hanggang maaari ang haba ng paghinto ng serbisyo.

Kung ikaw ay isang Nagpapaupa na may (mga) umuupa sa mga lugar na nakalista sa itaas at sinisingil ka ng SFPUC sa iyong pangalan, **responsibilidad mo** na bigyan ng paunawa ang (mga) umuupa ng tungkol sa nakaplanong paghinto ng serbisyo. Responsibilidad din ng Nagpapaupa na muling pailawin ang mga pilot light ng mga umuupa kasunod ng paghinto ng serbisyo ng likas na gas.

Ang di-ligtas na mga kondisyon ng panahon o anumang di-inaasahang emerhensiya ay magtutulak sa mga Tauhan ng Likas na Gas na kanselahin ang trabaho sa huling minuto at hindi magagawa ng mga tauhan na bigyan ka ng paunawa ng pagkanselang ito. Gayunman, tatanggap ka ng paunawa ng binagong petsa at oras.

Humihingi ng paumanhin ang SFPUC para sa abalang ito at nagpapasalamat sa iyong pang-unawa.

NOTICE OF NATURAL GAS SERVICE INTERRUPTION

Date: _____

Time: _____

Affected Areas of Treasure Island Facilities include:

The San Francisco Public Utilities Commission (SFPUC) will be installing new equipment and/or performing maintenance in your area. This will help the SFPUC to ensure reliable service to all customers. In order to perform this work safely, the crew needs to temporarily interrupt your natural gas service. The crew will do its best to minimize the length of the service interruption.

If you are a Landlord with tenant(s) in the areas listed above and the SFPUC bill is in your name, **it is your responsibility** to notify the tenant(s) of the planned service interruption. It is also the Landlord's responsibility to re-light the tenants' pilot lights following the natural gas service interruption.

Unsafe weather conditions or any unforeseen emergency will require the Natural Gas Crew to cancel the work at the last minute and the crew will be unable to notify you of this cancellation. However, you will receive notification of the rescheduled date and time.

The SFPUC apologizes for this inconvenience and thanks you for your patience.



AVISO DE INTERRUPCIÓN DEL SERVICIO DE GAS NATURAL

Fecha: _____

Hora: _____

Las Áreas Afectadas de la Instalación de Treasure Island incluyen:

La Comisión de Utilidades Públicas de San Francisco (SFPUC por sus siglas en inglés) estará instalando equipo nuevo y / o llevando a cabo obras de mantenimiento en su área. Esto ayudará a la SFPUC asegurar un servicio fiable a todos sus clientes. Para realizar estas obras de manera segura, el equipo de obreros necesita interrumpir temporalmente su servicio de gas natural. El equipo se esforzará para mantener la interrupción de servicio a un mínimo.

Si usted es un propietario con inquilino(s) en las áreas listadas anteriormente, y la factura de la SFPUC está a su nombre, **es su responsabilidad** notificar a cada inquilino de la interrupción programada de servicio. También es la responsabilidad del propietario re-encender los pilotos de cada aparato doméstico después de una interrupción de servicio de gas natural.

Condiciones climáticas o cualquier otra emergencia imprevista requerirá que el equipo de obreros de gas natural cancele las obras a último momento y el equipo no será capaz de avisarle de dicha cancelación. Sin embargo, usted recibirá una notificación sobre la fecha y horario de la reprogramación de las obras.

La SFPUC le pide disculpas por estas molestias y le agradece de antemano por su paciencia.

天然氣暫停服務通知

日期: _____

時間: _____

金銀島設施受影響地區包括:

三藩市水利局 (SFPUC) 將在你的地區安裝新設備及 / 或執行維修工作。這可幫助三藩市水利局為所有顧客提供可靠的服務。為安全執行此項工作，工作人員需要暫時停止你的天然氣服務。工作人員會儘力將暫停此服務的時間減至最少。

如你是房東，有住客住在上述的地區而三藩市水利局的帳單是以你的名字發出，你有責任通知住客計劃暫停此服務之事宜。房東亦有責任在天然氣服務中斷之後，重新為住客點燃常明火。

如天氣情況不安全或有任何未能預料到之緊急情況，天然氣工作人員可能在最後一分鐘取消此工作，而他們將無法通知你此取消行動。但是，你將會收到重新安排時間和日期的通知。

三藩市水利局對此造成之不便謹以致歉，並感謝你的耐心。



PAUNAWA NG NAKAPLANONG PAGHINTO NG SERBISYO NG KURYENTE

Petsa: _____

Oras: _____

Ang mga apektadong Pasilidad ng Treasure Island ay kabilang ang:

Ang Mga Tauhan ng Mataas na Boltahe ng San Francisco Public Utilities Commission (SFPUC) ay dapat gumawa ng kailangang mga pagkukumpuni upang masiguro ang maaasahang serbisyo sa lahat ng parokyano. Upang ligtas na magawa ang trabahong ito, kailangan ng mga tauhan na pansamantalang ihinto ang iyong serbisyo ng kuryente. Gagawin ng mga tauhan ang makakaya upang paliitin hanggang maaari ang haba ng paghinto ng serbisyo.

Kung ikaw ay isang Nagpapaupa na may (mga) umuupa sa mga lugar na nakalista sa itaas at sinisingil ka ng SFPUC sa iyong pangalan, **responsibilidad mo** na bigyan ng paunawa ang (mga) umuupa ng tungkol sa nakaplanong paghinto ng serbisyo.

Ang di-ligtas na mga kondisyon ng panahon o anumang di-inaasahang emerhensiya ay magtutulak sa mga Tauhan ng Mataas na Boltahe na kanselahin ang trabaho sa huling minuto at hindi magagawa ng mga tauhan na bigyan ka ng paunawa ng pagkanselang ito. Gayunman, tatanggap ka ng paunawa ng binagong petsa at oras.

BABALANG PANGKALIGTASAN: Ang mga residente ay hindi dapat gumamit ng mga generator sa ilalim ng anumang pangyayari nang hindi nalalaman ng tagapagkaloob ng Pabahay. Kung ikaw ay gagamit ng generator sa panahon ng paghinto ng serbisyo dapat mong ihiwalay ang iyong generator mula sa sistema ng SFPUC. Ang kabiguang gawin ito ay hindi lamang makakapinsala sa iyong generator kundi maaari ring maging dahilan ng seryosong pinsala sa mga tauhan ng kuryente. Humihingi ng paumanhin ang SFPUC para sa abalang ito at nagpapasalamat sa iyong pang-unawa.

Kung ikaw ay umaasa sa mga kagamitang sumusuporta sa buhay, mangyaring isaalang-alang ang mga sumusunod:

HUMANAP NG PANGHALILING TIRAHAN SA ISANG LOKASYON NA HINDI APEKTADO NG PAGHINTO.

- **Ang mga computer at ibang elektronikong kagamitan** ay partikular na sensitibo sa paghinto ng serbisyo ng kuryente. Malakas na inirekomenda namin ang paghugot sa kagamitang ito mula sa saksakan bago ang panahon ng paghinto.
- **Ang mga sistemang panseguridad, orasan, pantakda ng oras ng patubig,** at katulad na kagamitan ay malamang na mangailangan ng muling pagbabalik sa kaayusan pagkakumpleto ng paghinto.

Para sa impormasyon tungkol sa kung paano dapat **pangalagaan ang mga nasisirang pagkain** sa iyong refrigerator o freezer, bisitahin ang website www.foodsafety.gov/blog/power_outages.html

NOTICE OF PLANNED ELECTRIC SERVICE INTERRUPTION

Date: _____

Time: _____

Affected Areas of Treasure Island Facilities include:

The San Francisco Public Utilities Commission (SFPUC) High Voltage Crew needs to make necessary repairs to ensure reliable service to all customers. In order to perform this work safely, the crew needs to temporarily interrupt your electric service. The crew will do its best to minimize the length of the service interruption.

If you are a Landlord with tenant(s) in the areas listed above and the SFPUC bill is in your name, **it is your responsibility** to notify the tenant(s) of the planned service interruption.

Unsafe weather conditions or any unforeseen emergency will require the High Voltage Crew to cancel the work at the last minute and the crew will be unable to notify you of this cancellation. However, you will receive notification of the rescheduled date and time.

SAFETY WARNING: Residents should not use generators under any circumstances without the knowledge of the Housing provider. If you use a generator during the service interruption you must isolate your generator from the SFPUC system. Failure to do so will not only damage your generator but can cause serious injury to electric crew personnel. The SFPUC apologizes for this inconvenience and thanks you for your patience.

If you rely **on life support devices**, please consider the following:

FIND ALTERNATE LODGING AT A LOCATION NOT AFFECTED BY THE INTERRUPTION.

- **Computers and other electronic equipment** are particularly sensitive to power interruption. We highly recommend unplugging this equipment before the shutdown period.
- **Security systems, clocks, irrigation timers,** and similar equipment will likely require resetting after the shutdown is completed.

For information about how to **safeguard perishable foods** in your refrigerator or freezer, visit the website www.foodsafety.gov/blog/power_outages.html



AVISO DE INTERRUPCIÓN PROGRAMADA DE SERVICIO ELÉCTRICO

Fecha: _____

Hora: _____

Las Áreas Afectadas de la Instalación de Treasure Island incluyen:

El Equipo de Obreros de Alto Voltaje de la Comisión de Utilidades Públicas de San Francisco (SFPUC por sus siglas en inglés) necesita hacer reparaciones para asegurar un servicio fiable para todos sus clientes. Para realizar estas obras de manera segura, el equipo necesita interrumpir temporalmente su servicio eléctrico. El equipo se esforzará para mantener la interrupción de servicio a un mínimo.

Si usted es un propietario con inquilino(s) dentro de las áreas listadas anteriormente y la factura de la SFPUC está a su nombre, **es su responsabilidad** notificar a cada inquilino de esta interrupción programada de servicio.

Condiciones climáticas o cualquier otra emergencia imprevista requerirá que el equipo de obreros de Alto Voltaje cancele las obras a último momento y el equipo no será capaz de avisarle de dicha cancelación. Sin embargo usted recibirá una notificación sobre la fecha y horario de la reprogramación de las obras.

AVISO DE SEGURIDAD: Los residentes no deberán usar generadores bajo ninguna circunstancia sin el conocimiento del propietario. Si usted usa un generador durante la interrupción de servicio, debe aislar su generador del sistema de la SFPUC. De no hacerlo, no solo dañará su generador si no que puede causar heridas graves al personal del equipo eléctrico. La SFPUC le pide disculpas por estas molestias y le agradece de antemano por su paciencia.

Si usted depende de algún **dispositivo de soporte de vida**, por favor considere lo siguiente:

ENTRE VIVIENDA ALTERNATIVA EN UNA UBICACIÓN NO AFECTADA POR LA INTERRUPCIÓN.

- **Las computadoras y otro equipo electrónico son particularmente sensibles a la interrupción de energía.** Le recomendamos sumamente que desconecte este equipo antes del periodo de interrupción.
- **Los sistemas de Seguridad, relojes, cronómetros de riego, y otros equipos similares seguramente requerirán reprogramación después que termine la interrupción.**

Para información sobre como **resguardar alimentos perecederos** dentro de su refrigerador o congelador, visite la página Web www.foodsafety.gov/blog/power_outages.html

暫停計劃供電服務通知

日期: _____

時間: _____

金銀島設施受影響地區包括：

三藩市水利局（SFPUC）高壓機組人員需要做必要的維修，以確保為所有顧客提供可靠的服務。為安全執行此項工作，機組人員需要暫時停止你的電力服務。工作人員會儘力將暫停此服務的時時間減至最少。

如你是房東，有住客住在上述的地區而三藩市水利局的帳單是以你的名字發出，**你有責任**通知住客計劃暫停此服務之事宜。

如天氣情況不安全或有任何未能預料到之緊急情況，高壓機組人員可能在最後一分鐘取消此工作，而他們將無法通知你此取消行動。但是，你將會收到重新安排時間和日期的通知。

安全警告：在任何情況下未經屋主知曉前，住客不應使用發電器。如果你在服務暫停的時間使用發電器，你必須將你的發電器和三藩市水利局的系統分開。如沒有這樣做你不只可損壞你的發電器同時可導致電力組工作人員嚴重受傷。三藩市水利局對此造成之不便謹以致歉，並感謝你的耐心。

如果你**依賴維生儀器**，請考慮以下方法：

在暫停供電之前在另一個地點找住宿

- **電腦和其他電子儀器**對電力中斷特別敏感。我們極力建議你在關閉期間將這些設備的電擊除出。
- **保安系統，鐘，灌溉計時器**和類似的設備可能需要在暫停供電結束之後重新設定。

有關如何保持你冰箱或冷藏庫易腐食物的安全，請上網：www.foodsafety.gov/blog/power_outages.html



Traffic Advisory

Date: Feb. 1, 2024

District: 4

Contact: Pedro Quintana/ Matt O'Donnell

Phone: (510) 867-6028/ (510) 852-5113

FOR IMMEDIATE RELEASE

Overnight Ramp Closure on EB I-80 to Treasure/Yerba Buena Island Due to Maintenance Work in San Francisco County

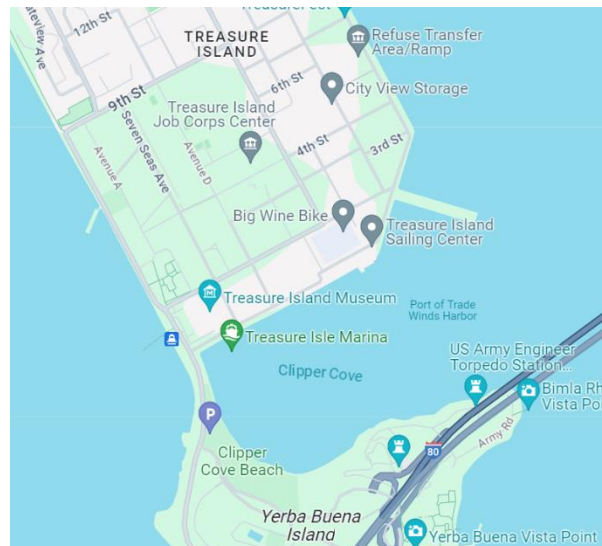
Schedule: Thursday, Feb. 8 from 11 p.m. until 5 a.m.

SAN FRANCISCO COUNTY - Caltrans is scheduled to close the eastbound Interstate 80 (I-80) off-ramp to Treasure Island and Yerba Buena Island due to maintenance work on **Thursday, Feb. 8** between **11 p.m.** and **5 a.m.** the following morning.

Motorists who need to access Treasure Island and Yerba Buena Island will need to continue to Eastbound I-80 toward Oakland, merge left, take the Bay Bridge Toll Plaza off-ramp, turn left onto Toll Plaza Service Road, follow detour signs to re-enter onto WB I-80 take the WB I-80 Treasure/Yerba Buena Island off-ramp.

For 24/7 traffic updates, please visit 511.org:
<https://twitter.com/511SFBay>.

For real-time traffic, click on Caltrans QuickMap: <http://quickmap.dot.ca.gov/>



| CleanCA.com | CleanWaterCA.com | [#BeWorkZoneAlert](https://twitter.com/BeWorkZoneAlert) | [Twitter](https://twitter.com) | [Facebook](https://facebook.com) | [YouTube](https://youtube.com) |

**Treasure Island Development Authority
City and County of San Francisco
TIDA Board Retreat
January 19, 2024**

To: TIDA Board Members
Staff Contact: Kate Austin, TIDA Board Commission Secretary
Reviewed by: Bob Beck, TIDA Director
Subject: Action Planning at the 2024 TIDA Board Retreat

Report Overview

On January 19, 2024, the TIDA Board of Directors attended a publicly noticed retreat to review roles and responsibilities of TIDA as an agency and its legal framework, participate in a strategic discussion of finance, transitions, and neighborhood building, address goals for the coming year, and to identify future policy and programmatic priorities. This report summarizes the action planning discussion from the retreat and the subsequent potential action objectives developed by TIDA staff.

Pre-Retreat Survey

Prior to the retreat, TIDA Board members were asked to complete a survey and reflect on personal goals, areas of focus for the coming year, TIDA Board goals, and opportunities for improvement.

The survey results indicated individual goals of shaping equitable and sustainable development and ensuring that the development's vision comes to fruition and truly holds community. For the future, the Board wants to focus on parks, businesses owned by people of color, housing transitions, transportation, tolling, and art. Opportunities suggested for improvement include better engagement and communication with staff and better Board member attendance.

Action Planning Discussion

After reviewing the survey results, TIDA staff and Board members participated in a brainstorming session in which they discussed goals and interests of the TIDA Board, hot topics, and identified key hurdles.

Goals and Interests

- Transitioning community services to the City, specifically the Navy's legacy utilities
- Increasing clarity and understanding around transition housing opportunities, policies, and procedures
- Placemaking and community building, including strategies to better understand and prepare for an increasingly mixed income community
- Planning for parks governance and the need for a roadmap as parks are completed and TIDA's responsibilities and park visitorship expands
- Planning for arts program and maximizing available funding
- Approving amendments to the Development Agreement, specifically additional public finance investment
- Dedicating more resources to promote Treasure Island and celebrate project milestones

Key Hurdles

- Understanding the foundational documents including the Development Agreement, DDA, and Transition Housing Rules and Regulations (THRR's)

- Building community across socioeconomic groups
- Disinformation and lack of awareness
- Balancing access equity (including parking), congestion management (tolling), and other measures to support transportation needs and objectives
- Housing transition rules are complicated and different for households living in One TI units and The Villages. There are different parameters for different Villages households based on the date an individual household moved to Treasure Island. A hurdle is to simply and clearly communicate the different parameters for each type of household.

Hot Topics

- City responsibility for social services, including health, safety and supportive services
- Transition current eligible households to new homes; including outreach and communication concerns
- Tolling
- Parks and art
- Approving amendments to the Development Agreement

TIDA Board Requests / Actions and Director Response

After reviewing the TIDA Board's goals, interests, and hurdles, here's a summary of what we heard, and the Director's response. In an effort to be immediately responsive to the request that TIDA be more communicative with the Board, each item concludes with a "*Director's Note*", providing information about how he plans to prioritize staff response.

TIDA Board Hearings & Member Requests

- Develop and maintain a running a running list inquiry items requested by Board Members.
Director's Note: Staff will create a list, note the date the request was made and remove the item after the item is addressed, unless the Board President or a Board majority seek to keep the matter on the list. The list will always be available and will be reviewed annually by the Director and the Board President, or more frequently as requested by the Board President.

Transitioning Public and Community Services to the City

- TIDA staff to create action plan on how board can support transitioning public services and community services to the appropriate City agencies.
Director's Note: This item requires a significant amount of coordination and cooperation from other City agencies. I will ask staff to target a Fall 2024 memorandum update.

Housing Transitions

Director's Note: This item seemed to be the Board's highest priority, and it aligns with my priorities for the near-term. It will be an immediate focus for myself, staff, and our consultants as we prepare for and transition residents into Star View Court. I will include regular updates on Board and HITS Committee agendas, but I am also available for extended one-on-one briefings for any Board Member wishing to have a more in depth discussion on the transition programs, the reluctance of some residents to avail themselves of transition opportunities, and the prospects for residents without transition benefits.

- TIDA staff and consultants to develop additional communications materials that more clearly describe housing policies as defined in the Transition Regulations and TIDA's implementation plan. The materials should clearly describe rules and procedures applicable to One Treasure Island households and Villages households.

Director's Note: This will be an immediate work product.

- TIDA consultant to prepare Summary Status Report for tenants living at The Villages that is updated on a regular basis, which outlines outreach, points of contact and responses. A priority will be defining and quantifying connections between objectives, efforts, and outcomes.

Director's Note: This will be an immediate work product.

- TIDA staff to document lessons learned from YBI transitions.

Director's Note: As time allows, this can be a near-term work product.

- Improve communications around the Housing Plan.

Director's Note: Agree.

- Create and invest in community building “arm” of TIDA.

Director's Note: TIDA is investing in community work, this is a principal goal of the equity program. TIDA staff and One Treasure Island will return to the Board this spring with an informational presentation for your review.

Parks

- TIDA staff to create roadmap of parks governance.

Director's Note: Staff will work on this for a March 2024 hearing.

- TIDA staff to follow-up with Presidio Trust to share resources to put together parks vision and framework.

Director's Note: Board President Tsen working to facilitate a follow-up discussion with Michael Bolton before the February 2024 Board hearing.

Arts Program

- TIDA staff to create temporary plan for arts program until Art Fee revenues materialize.

Director's Note: I will work with Arts Commission staff to include on the agenda for the next meeting of Treasure Island Arts Steering Committee.

Development Agreement Amendments

- TIDA staff to create talking points for board members to help promote needed Development Agreement amendments in order to ensure that housing, art, parks, etc. can continue.

Director's Note: Staff will begin the discussion with the TIDA Board on March 13th, for final action in the Spring, so that they may make their own determination about how to ensure the best public outcome.

Director's Conclusion

The Board's input is greatly valued. The retreat dialog helped staff understand the Board's priorities and concerns in more detail and helped develop personal connections. If one issue seemed to rise to the top, it was the need for increased understanding of the housing transitions. As I look forward to advancing

TIDA's work and being responsive to this Board, I am mindful of my responsibility as Director to ensure that my finite staff's capacity is dedicated towards the most urgent and high-priority tasks. As such, not every issue can be advanced immediately. Staff will be working to respond to these Board requests while also pursuing the priority work we described at the retreat including, first-and-foremost, the coordination needed for the physical construction of the Islands and the City provision of services necessary to operate the new facilities and infrastructure; closely followed by the work needed to prepare the amendments to the Development Agreement, the Disposition and Development Agreement and related documents; and ensuring that all actions center equity. Of the actions that the Board prioritized, the Housing Transition work aligns directly with current demands on staff time and will be at the center of our post-retreat efforts. Nonetheless, I will be asking staff to work on all of these requests during the 2024 calendar year.

As Director, both I and TIDA staff look forward to continued discussions and encourages Board feedback to this report.

TREASURE ISLAND TRANSITION TALKS

SATURDAY
JANUARY 20, 2024

SHIP SHAPE CENTER
850 AVE I, SAN FRANCISCO

11:00 - 2:00 PM



Please join a community open house hosted by District 6 Supervisor Dorsey, in cooperation with Treasure Island Development Authority, One Treasure Island, Treasure Island Development Group and a collaboration of City agencies to learn about neighborhood development, transportation updates, and how we are working together to meet the needs of the people that live here today. There will be a short opening remark by Supervisor Dorsey, followed by opportunities to meet with various City departments and OneTI staff.

Event Offerings:

- Food
- Interpretation available in Spanish and Chinese.
- Per the Language Access Ordinance, Filipino (Tagalog) interpreters will be available upon request and assistance in additional languages may be honored whenever possible. To request assistance with these services please email TIDA@sfgov.org or call 415-274-0660 at least 72 hours in advance of the event.



San Francisco
County Transportation
Authority

San Francisco
Planning

TREASURE
ISLAND
SAN FRANCISCO

**TREASURE
ISLAND** MOBILITY
MANAGEMENT
AGENCY

CONVERSACIONES DE TRANSICIÓN EN TREASURE ISLAND

**SÁBADO
20 DE ENERO DE 2024**

**CENTRO COMUNITARIO SHIP SHAPE
850 AVE I, SAN FRANCISCO**

11:00 a.m. - 2:00 p.m.



Únase a una jornada de puertas abiertas a la comunidad organizada por Supervisor Dorsey del Distrito 6, en cooperación con la Autoridad de Desarrollo de Treasure Island (TIDA), One Treasure Island, el Grupo de Desarrollo de Treasure Island y una colaboración de agencias de la ciudad para aprender sobre el desarrollo de vecindarios, actualizaciones de transporte y cómo estamos trabajando juntos para satisfacer las necesidades de las personas que viven aquí hoy. Habrá un breve discurso de apertura por parte del Supervisor Dorsey, seguido de oportunidades para reunirse con varios departamentos de la Ciudad y personal de One Treasure Island.

Ofertas de eventos:

- Comida
- Intérpretes disponibles en español y chino
- De acuerdo con la Ordenanza de Acceso Lingüístico, los intérpretes de filipino (tagalo) estarán disponibles a requisición y se puede brindar asistencia en idiomas adicionales siempre que sea posible. Para solicitar asistencia con estos servicios, envíe un correo electrónico a TIDA@sfgov.org o llame al (415) 274-0660 por lo menos 72 horas antes del evento.



San Francisco
County Transportation
Authority

San Francisco
Planning

TREASURE
ISLAND
SAN FRANCISCO

**TREASURE
ISLAND** MOBILITY
MANAGEMENT
AGENCY

MGA PAG-UUSAP SA TRANSISYON NG TREASURE ISLAND

SABADO
ENERO 20, 2024

SHIP SHAPE CENTER
850 AVE I, SAN FRANCISCO

11:00AM – 2:00 PM



Mangyaring sumali sa pangkomunidad na open house na idaraos ni Superbisor Dorsey ng Distrito 6, sa pakikipagtulungan ng Treasure Island Development Authority, One Treasure Island, Treasure Island Development Group at sa kolaborasyon ng mga ahensya ng Lungsod upang matutunan ang tungkol sa pagpapaunlad ng kapitbahayan, mga update sa transportasyon, at kung paano kami magtutulungan upang matugunan ang mga pangangailangan ng mga taong nakatira rito sa kasalukuyan. Magkakaroon ng isang maikling pambungad na pananalita ni Superbisor Dorsey, na susundan ng mga oportunidad na makipagpulong sa iba't ibang departamento ng Lungsod at mga tauhan ng OneTI.

Mga Ihahandog sa Event:

- Pagkain
- Mayroong interpretasyon sa mga wikang Espanyol at Tsino
- Alinsunod sa Ordinansa sa Pag-access sa Wika, magkakaroon ng tagapagsalin sa wikang Filipino (Tagalog) kapag hiniling at maaaring tuparin ang tulong sa mga karagdagang wika kapag posible. Para humiling ng tulong sa mga serbisyong ito, mangyaring mag-email sa TIDA@sfgov.org o tumawag sa 415-274-0660 ng hindi bababa sa 72 oras bago ang event.



San Francisco
County Transportation
Authority

San Francisco
Planning

TREASURE
ISLAND
SAN FRANCISCO

TREASURE
ISLAND
MOBILITY
MANAGEMENT
AGENCY

金銀島過渡資訊會

星期六
2024年1月20日

地點: SHIP SHAPE CENTER
850 AVE I, SAN FRANCISCO

上午11時至下午2時



請加入一個由第六選區市參事Dorsey主持的社區會議，這是和金銀島發展局，One Treasure Island, Treasure Island Development Group和市府各部門合作的會議，以了解鄰區發展，交通最新消息和我們如何滿足今天住在此處的居民的需要。會議先由市參事Dorsey作簡短的開場白，然後與會者有機會和多個政府部門以及OneTI職員交流。

活動提供:

- 食物
- 西班牙語和華語翻譯
- 根據語言接進法令，應要求可提供菲律賓（泰加洛）傳譯員，以及在可能需要的時候，提供其他所需語言協助。要求協助，請在活動舉行前至少72小時發電郵至415-274-0660，或致電415-274-0660。



San Francisco
County Transportation
Authority

San Francisco
Planning

TREASURE
ISLAND
SAN FRANCISCO

TREASURE
ISLAND
MOBILITY
MANAGEMENT
AGENCY



MAYOR'S OFFICE OF
HOUSING & COMMUNITY DEVELOPMENT



SAN FRANCISCO
OFFICE OF ECONOMIC &
WORKFORCE DEVELOPMENT

We Want to Hear from *You!*

The San Francisco Mayor's Office of Housing and Community Development and Office of Economic and Workforce Development are collecting community input to help inform strategic investments in affordable housing and community services. This is your opportunity to discuss how San Francisco can better serve its residents.

**Learn more about our programs and share your input:
www.engagesanfrancisco.com**





MAYOR'S OFFICE OF
HOUSING & COMMUNITY DEVELOPMENT



SAN FRANCISCO
OFFICE OF ECONOMIC &
WORKFORCE DEVELOPMENT

¡Queremos escuchar su opinión!

La Oficina de Vivienda y Desarrollo Comunitario y la Oficina de Desarrollo Económico y Laboral de la Alcaldía de San Francisco solicitan opiniones de la comunidad para orientar nuestras decisiones de inversiones estratégicas en vivienda asequible y programas comunitarios. Es su oportunidad para opinar cómo la Ciudad de San Francisco puede mejorar servicios para los residentes.

**Conozca más sobre nuestros programas
y comparta sus comentarios:
www.engagesanfrancisco.com**





MAYOR'S OFFICE OF
HOUSING & COMMUNITY DEVELOPMENT



SAN FRANCISCO
OFFICE OF ECONOMIC &
WORKFORCE DEVELOPMENT

我們希望收到您的意見！

三藩市市長房屋和社區發展辦公室,以及經濟和勞動力發展辦公室,正在收集社區意見,為經濟適用住房和社區服務投資戰略幫助提供建議。這是您討論舊金山如何更好地服務其居民的機會。

了解有關我們計劃的更多信息並分享您的意見:

www.engagesanfrancisco.com



January 2024



Passenger Service Discontinued

The Loop service is no longer operating due to evolving road conditions.

Visit [ti-loop.com](https://www.ti-loop.com) for details about the conclusion of this project.

We apologize for any inconvenience and thank the community for its engagement. Please consider the Muni 25 Treasure Island for your travel needs.



March 5, 2024

Presidential Primary Election!

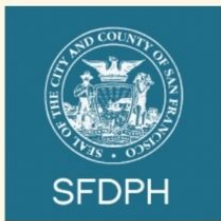
San Francisco Elections



**Your vote goes a long way.
Cast your ballot by election day!**

It's a huge election year, and One Treasure Island will be working hard with the SF Elections team to increase voter turnout on Treasure Island.

Stay tuned for more information regarding voter events in the near future, where you can register to vote, volunteer as a poll worker or simply learn more about the primary election.



Let's Get vaccinated



Tues Feb 20
3:00-6:00pm

Ship Shape Community Center
850 Ave I, Treasure Island, SF

TREASURE ISLAND

lunch and learn

17
FEB

Celebrate
Black
HISTORY
month

12PM
TO
3PM

PLEASE JOIN US AT THE YMCA
TO CELEBRATE AND LEARN
BLACK HISTORY

What to expect?

FOOD, MUSIC, ART, SHORT FILMS, EXHIBITS,
RAFFLES, GIVEAWAYS AND MUCH MORE.....

WHERE?

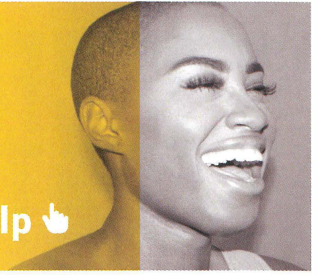
THE TREASURE ISLAND YMCA

749 9TH ST, SAN FRANCISCO, CA 94130





uwba.org/freetaxhelp 



Get your taxes done right, for free

by one of our experts and maximize your refund! Call 211 or visit uwba.org/freetaxhelp to make an appointment at one of our Bay Area locations.



You may qualify for more than \$8,000 in refunds from the California and Federal Earned Income Tax Credits!

Location: TREASURE ISLAND
Name: Ship Shape Community Center
Address: 850 Avenue I
City, State, Zip: San Francisco, CA 94130
Phone: (415) 274-0311 x315

OPEN
February 1st thru April 4th 2024

Thursdays: 10 AM – 4 PM (by appointments only)
Super Saturdays: February 3rd & 17th 10 am – 1 pm
March 2nd, 16th, & 30th 10 am – 1pm
(First come first serve)

PLEASE CALL (415) 274-0311 x 315 FOR A THURSDAY APPT.

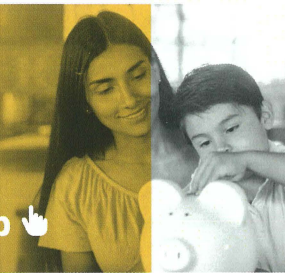
Bring Your:

- ✓ Photo ID and Social Security Card or ITIN for each person on your tax return
- ✓ Information for all forms of income: W2s, 1099s, self-employment work, etc.
- ✓ Any other tax forms: 1098s, 1095s, etc.
- ✓ Last year's tax return, if available
- ✓ Savings and checking account and routing numbers for direct deposit
- ✓ Letters/notices from the IRS, if any





uwba.org/freetaxhelp



Haga sus impuestos correctamente y gratis

Llame al 211, o visite uwba.org/freetaxhelp/ para hacer una cita en una de nuestras ubicaciones.



¡Usted podría ser elegible para un reembolso de más de \$8,000 si reclama el Crédito Tributario por Ingreso del Trabajo Federal y de California!

Traiga Su:

- ✓ Identificación con fotografía y credencial del seguro social o ITIN de cada persona que figure en su declaración de impuestos
- ✓ Información para todos tipos de ingresos: W2, 1099, trabajo por cuenta propia, etc.
- ✓ Cualquier otro documento fiscal: 1098, 1095, etc.
- ✓ Declaración de impuestos del año anterior, si es aplicable
- ✓ Números de cuenta de cheque, cuenta de ahorros, y ruta bancaria para depósito directo
- ✓ Cartas/avisos del IRS, si es aplicable

Lugar: TREASURE ISLAND
Nombre: Ship Shape Community Center
Dirección: 850 Avenue I
Ciudad, Estado, Zip: San Francisco, CA 94130
Teléfono: (415) 274-0311 x315

ABIERTO

1 DE FEBRERO HASTA 4 DE ABRIL, 2024

Jueves: 10 AM – 4 PM (con cita solamente)

Súper Sábados: Febrero 3 & 17, 10 AM – 1 PM

Marzo 2, 16 & 30, 10 AM – 1 PM

(Por orden de llegada)

Por favor llamar al (415) 274-0311 x315 para citas en jueves



GOAL: FINANCIAL HEALTH IN 2024



ONE TREASURE ISLAND IS NOW WORKING WITH A FINANCIAL EXPERT AND ARE OFFERING FREE 1:1 SESSIONS TO RESIDENTS TO ENCOURAGE FINANCIAL HEALTH.

- IF YOU FILE YOUR TAXES WITH ONE TI AND PUT A PORTION OF YOUR RETURN INTO A SAVINGS ACCOUNT, YOU WILL BE ENTERED INTO A RAFFLE!
- IF YOU SCHEDULE A 1:1 SESSION WITH ONE TI'S FINANCIAL COACH, YOU WILL BE ENTERED INTO A RAFFLE!
- IF YOU DO BOTH OF THESE, YOU WILL BE ENTERED INTO THE RAFFLE TWICE!

OUR 3 RAFFLES INCLUDE:

- FEBRUARY 2024 TO WIN \$100
- MARCH 2024 TO WIN \$200
- APRIL 2024 TO WIN A TABLET!



EMAIL ALEXANDRIA DOWNING AT FINANCIALEXPERT@ONETREASUREISLAND.ORG TO SCHEDULE YOUR 1:1 APPOINTMENT TODAY!

PARA OBTENER MÁS INFORMACIÓN SOBRE EL SITIO DE IMPUESTOS DE TREASURE ISLAND, ENVÍE UN CORREO ELECTRÓNICO A: MNELKEN@ONETREASUREISLAND.ORG



OBJETIVO: SALUD FINANCIERA EN 2024

ONE TREASURE ISLAND AHORA ESTÁ TRABAJANDO CON UN INSTRUCTOR FINANCIERO QUE OFRECE SESIONES UNO A UNO GRATUITAS A RESIDENTES PARA FOMENTAR LA SALUD FINANCIERA. A CONTINUACIÓN, SE PRESENTAN ALGUNAS OPCIONES DE INCENTIVOS PARA AYUDARLO A ALCANZAR SU OBJETIVO.

- SI PRESENTAS TUS IMPUESTOS CON ONE TI Y PONES UNA PARTE DE TU REEMBOLSO EN UNA CUENTA DE AHORROS ¡PARTICIPARÁS EN UNA RIFA!
- SI PROGRAMAS UNA SESIÓN 1:1 CON EL INSTRUCTOR FINANCIERO DE ONE TI ¡PARTICIPARÁ EN UNA RIFA!
- SI HACES AMBAS COSAS ¡ENTRARÁS EN EL SORTEO DOS VECES!

NUESTROS 3 SORTEOS INCLUYEN:

- ¡FEBRERO DE 2024 PARA GANAR \$100!
- ¡MARZO DE 2024 PARA GANAR UNA TABLETA ELECTRÓNICA!
- ¡ABRIL DE 2024 PARA GANAR \$250!



¡ENVÍE UN CORREO ELECTRÓNICO A ALEXANDRIA DOWNING A FINANCIALEXPERT@ONETREASUREISLAND.ORG PARA PROGRAMAR UNA CITA UNO A UNO HOY!



目標：2024 年財務穩健

ONE TREASURE ISLAND金銀島現正與一名理財顧問合作，提供免費的1:1和居民諮詢，俾鼓勵財務穩健。以下是一些幫助你達到目標的激勵選擇。

- 如你在ONE TI填交稅表，將部份的退稅存入一個儲蓄戶口，你可加入一個幸運抽獎！
- 如你安排一個1:1和ONE TI的理財顧問諮詢，你可以加入一個幸運抽獎！
- 如你同時做以下兩個選擇，你可以加入幸運抽獎兩次！

我們的幸運抽獎包括：

- 2024年2月贏得\$100!
- 2024年3月贏得一張桌子!
APRIL 2024 TO WIN \$250!
- 2025年4月贏得\$250!



請今天就發電郵給ALEXANDRIA DOWNING
FINANCIALEXPERT@ONETREASUREISLAND.ORG
安排你的1:1約見！

Community Events Survey

WE WANT TO HEAR FROM YOU!



**SCAN THE QR CODE TO TAKE A VERY SHORT SURVEY
TO TELL US WHAT YOU LIKE ABOUT OUR EVENTS AND
WHAT YOU WOULD LIKE TO SEE IMPROVED.**





REGISTER TO
VOTE AND ENTER
A RAFFLE FOR A
\$50 GIFT CARD!

PRESIDENTIAL PRIMARY
ELECTION
WORKSHOP

TUES JAN 23

YOUR VOTE MATTERS ON MARCH 5!

3-5PM @ SHIP SHAPE

INFORMATION - REGISTER



STOP BY ANYTIME!



The SF SPCA drive-through mobile clinic offers free vaccines for dogs and cats

(pedestrian care available for those without vehicles)

EVERY 3RD SATURDAY OF THE MONTH

WHEN: 9am-12pm (or until capacity is reached)

NEW LOCATION: Candlestick Recreation Area, former arena parking lot, Arelious Walker Dr. and Gillman Ave., SF, CA 94124)

December 16th, 2023
January 20th, 2024
February 17th, 2024
March 16th, 2024
April 20th, 2024



Free DAPP (Parvo) Vaccine for dogs!

Free FVRCP vaccine for cats!

Free flea treatment!

Sign up for low cost and free spay/neuter!

No appointment needed. Dogs must be on leash and cats must be in a carrier. Dogs and cats must be 6 weeks of age or older. Please keep your pets inside the vehicle.

For more information:
(415)554-3084



The SF SPCA drive-through mobile clinic offers free vaccines for dogs and cats

(pedestrian care available for those without vehicles)

EVERY 3RD SATURDAY OF THE MONTH

WHEN: 9am-12pm (or until capacity is reached)

NEW LOCATION: Candlestick Recreation Area, former arena parking lot, Arelious Walker Dr. and Gillman Ave., SF, CA 94124)

December 16th, 2023
January 20th, 2024
February 17th, 2024
March 16th, 2024
April 20th, 2024



Free DAPP (Parvo) Vaccine for dogs!

Free FVRCP vaccine for cats!

Free flea treatment!

Sign up for low cost and free spay/neuter!

No appointment needed. Dogs must be on leash and cats must be in a carrier. Dogs and cats must be 6 weeks of age or older. Please keep your pets inside the vehicle.

For more information:
(415)554-3084



WHERE COMMUNITY
CONNECTS



One Treasure Island

Would like to invite you to join our
17th Cycle of the
Construction Training Program

*In Person
Graduation Ceremony*

Please Join us

Friday, March 1, 2024

11:00 AM

**Ship Shape Community Center
850 Avenue I, San Francisco 94130**

VIRTUAL

TREASURE ISLAND

ORIENTATION

**LEARN ABOUT THE ISLAND AND
EVERYTHING IT HAS TO OFFER**



- **RECEIVE A WELCOME PACKET**
- **GIVE FEEDBACK**
- **MEET YOUR NEIGHBORS**

SAT FEB 10 FROM 10:00AM-12:00PM



**NO REGISTRATION NEEDED.
JUST SCAN THIS QR CODE TO
JOIN THE MEETING.**

[HTTPS://US02WEB.ZOOM.US/J/81056789872](https://us02web.zoom.us/j/81056789872)

One Year on Treasure Island and Yerba Buena Island with Five Photographers

Join five Bay Area photographers (Cody Andresen, David Alan Boyd, John Chiara, Janet Delaney, Mido Lee) for a discussion.



**Thursday, Feb 1,
6:00- 7:30pm
1 Avenue of the Palms**

*Presented by San Francisco Arts
Commission and Treasure Island
Development Authority*



WHERE COMMUNITY
CONNECTS

Volunteer opportunities available

at our

WEEKLY FOOD PANTRY!

Come help us provide free groceries
to those in need on Treasure Island!



Are you looking for a rewarding opportunity? We
could use your help at our weekly food pantry!

Two Shifts, EVERY TUESDAY:

12:30pm - 2:30pm

3:00pm - 5:00pm

Help us make a real difference!

If this opportunity interests you, please reach out to Amanda Scharpf at:
amanda@onetreasureisland.org

Or feel free to drop in and join us in person at:

*The Ship Shape Community Center
850 Avenue I, San Francisco, CA, 94130*

Like Taking Photos?

Want to make
some extra cash?

Please email a resume and 10
of your best photos to be considered to:

rbinkley@onetreasureisland.org



**\$20 per
hour!!**

**Enjoy all events right on
Treasure Island!**

WANT TO MAKE \$250?

BECOME A POLL WORKER!

TUES MARCH 5, 2024

PRIMARY PRESIDENTIAL ELECTION

TASKS INCLUDE:

- SETTING UP THE POLLING PLACE
- VOTER CHECK-IN
- BALLOT ISSUING
- TROUBLESHOOTING VOTER ISSUES
- BALLOT DROP-OFFS
- CLOSING PROCEDURES



To apply:

- You must be a US citizen and registered to vote in California or a legal permanent resident.
- Be at least 18 years old or an eligible high school student.

If you are interested, apply at:

sfelections.org/1T

or SCAN the QR code above.

NEED HELP WITH AN IRS TAX PROBLEM?

DO YOU HAVE AN OPEN TAX COURT CASE?

DOES THE IRS SAY YOU OWE MORE TAX?

§§§§§

**FREE TAX LEGAL CLINIC FOR
FREE TAX LEGAL ADVICE**

§§§§

January 18 – 1:00 p.m. to 4:00 p.m.

WHEN: Thursday, January 18, 2024, from 1:00 p.m. to 4:00 p.m.
***APPOINTMENTS ARE REQUIRED.** Contact Judit Martinez at
415-782-8978

WHERE: One Spear Street, San Francisco.

VOLUNTEERS: Tax attorneys providing free advice during the drop-in clinic.

BRING: Photo ID for building access.
Papers about your tax problem.
Your questions.

MORE

INFORMATION: **Judit Martinez**, Low Income Taxpayer Clinic Director,
Justice & Diversity Center of The Bar Association of
San Francisco. jmartinez@sfbar.org, 415-782-8978.

Morgan Lewis



JUSTICE & DIVERSITY CENTER
OF THE BAR ASSOCIATION OF SAN FRANCISCO

ABA
AMERICAN BAR ASSOCIATION
Tax Section

UC Law SAN FRANCISCO

**CHINESE
NEWCOMERS
SERVICE CENTER**
新僑服務中心

SUMMER SAILING

TREASURE ISLAND SAILING CENTER

June 10 - August 9



**FUN - EDUCATIONAL
AFFORDABLE - SAFE**

**GENEROUS SCHOLARSHIPS
AVAILABLE**

Beginner to Advanced Classes: Ages 7 - 17 years

No Sailing or Swimming Experience Required

Extended Care Available 8 am - 5 pm

TIDA IN THE NEWS

January 2024

Table of Contents

TreasureFest Returns to Treasure Island In February After Lengthy Pandemic Hiatus

Development on Treasure Island keeping with focus on re-use, sustainability

On an island in middle of San Francisco Bay, penthouse hits sales record at \$3.23M

Bay Padel catches on at SF Treasure Island venue full of history

Dear Treasure Island Authority Board, thanks (but really no thanks) for the toxic parks!

Articles

TreasureFest Returns to Treasure Island In February After Lengthy Pandemic Hiatus

[SFist](#), January 9, 2024

The monthly, two-day flea market with live music and food trucks on Treasure Island, born over a decade ago, is returning next month after a four-year absence.

TreasureFest, which dates back to 2011 and was formerly known as the Treasure Island Flea Market, is a last-weekend-of-the-month affair in which over 300 emerging brands, designers, and vendors show off and sell their wares in a flea-market setup not unlike some Sunday markets that happen in L.A. Not to be confused with the [Treasure Island Music Festival](#) (R.I.P.), which had its last outing [not on Treasure Island](#) but in West Oakland in 2018, TreasureFest does feature over 40 food vendors and live music over its two-stretch, but it happens every month like a flea market and is more focused on the vendors.

It has been a long, long while since this flea market last happened, and a lot has changed on Treasure Island, development-wise since then. There's also now a [regular ferry](#) for getting to and from.

Organizers threw [an offsite TreasureFest](#) in September 2021 at the Marin Center in San Rafael, but aside from that, there has been no TreasureFest since November 2019.

The event comes back alive next month, February 24 and 25, 11 a.m. to 5 p.m., and [tickets go on sale](#) a week from tomorrow, January 17 at 9 a.m. Limited pre-sale tickets are \$10, and early bird tickets are \$15, with regular admission being \$20.

Unlike the monthly Alameda Flea Market, a.k.a. the Alameda Point Antiques Faire, TreasureFest is not wholly about vintage finds. It's more in line with the Melrose Trading Post, the weekly flea market and

vendor fair at Fairfax High School in L.A., with new and vintage clothes, crafts, plants, housewares, and the like, combined with food and entertainment.

The music lineup for Saturday, February 24, will include indie pop artist [Silas Fermoy](#), local punk band [Tess & The Details](#), and Sonoma's [Black Sheep Brass Band](#).

On Sunday, February 25, [swiss.](#) will be performing, followed by [Cardboard People](#) and [Matt Jaffe](#).

[Follow TreasureFest on Instagram](#) for updates, and below are the rest of the dates for 2024.

[Find tickets here](#), starting next Wednesday.

Development on Treasure Island keeping with focus on re-use, sustainability

[CBS News](#), January 16, 2024

The emerging landscape of a quickly developing San Francisco neighborhood is reflecting the re-use mentality.

It's a decades-long development with an emphasis on ecological infrastructure. Small businesses are beginning to see their visions become reality as Yerba Buena and Treasure Island are dramatically changing by the day.

When MeeSun Boice first thought of opening a new restaurant on Treasure Island a decade ago, the small business owner welcomed the idea of reusing materials and objects all around her.

"What about containers. Because it's kind of semi-permanent, but you're repurposing containers," said Boice.

The outdoor tables are made from shipping containers, so is the kitchen, bar, and dining areas.

"My only request was there had to be windows everywhere for this multimillion-dollar view," said Boice.

The panoramic views from the tables at Mersea Restaurant speak for themselves, and so does the emerging landscape, which small businesses on the island have been patiently waiting for to draw in tourists and city residents.

"To have this view of the entire bay, city and Golden Gate Bridge is really special,"

said Kevin Conger of CMG Landscape Architecture.

Conger is a landscape architect whose firm designed one of the largest storm water gardens in the Bay Area that serves native plants and ultimately the waters below.

"It percolates through the soil in the plant medium and gets filtered and clean, and then released out into the bay," said Conger.

Nearby parks also incorporate ecological infrastructure and a re-use approach. Benches are made from cleared Eucalyptus trees.

The newest dog park features 3,000 feet of boulders that kept surfacing during excavation.

"It's a great opportunity to make a landscape that is more about the island and more about the place and in a way, I think much more beautiful," said Conger.

As construction to build 8,000 units awaits, with one-quarter designated as affordable housing escalates, residents and retailers are soaking in the dramatically changing views that were vastly different, not too long ago.

"Piles of dirt higher than the bridge," recalled Boice.

"This landscape is just alive with birds and bees and bugs and butterflies that nature has found very quickly," said Conger.

"The developers are truly taking this pile of rock, and turning it into a diamond," said Boice.

Mersea Restaurant is also becoming a gem for MeeSun.

"I knew it was going to happen. You have to believe in a vision, and in yourself, when everyone tells you you're crazy," said Boice.

Her years-long investment is finally paying off and bringing more friends, onto a transforming island in the shadows of the city skyline.

Close to 300 acres of parkland are being developed on Yerba Buena and Treasure Island.

New parks are still being built and set to open in the years to come.

Daily ferry service is now up and running from San Francisco to the island.

On an island in middle of San Francisco Bay, penthouse hits sales record at \$3.23M

[The Sacramento Bee](#), January 23, 2024

A penthouse on San Francisco's Yerba Buena Island has sold for \$3.23 million, setting a price record for the new and unique San Francisco neighborhood, according to the Compass real estate firm.

[Penthouse 602 is part of The Bristol](#), a five-story, 124-unit condominium building offering residents fantastic views of the Bay Bridge and other San Francisco landmarks. The three-bedroom, three-bathroom luxury condo spans 1,971 square feet inside. Outside, the wraparound terrace adds another 421 square feet.

Floor-to-ceiling glass walls envelop the living room, dining room and kitchen to show off dazzling views in every direction of the Golden Gate Bridge, Alcatraz, San Francisco Bay and the Marin Headlands.

A contemporary interior design is highlighted by fine details and finishes, such as Arclinea Italian cabinetry, Miele appliances, Dornbracht faucets and wide-plank white oak flooring throughout. There's an elegant primary bath with a Carrara marble countertop, large soaking tubs and oversized walk-in shower.

Homeowners at The Bristol can use a slate of high-end amenities, including a state-of-the-art fitness studio, fitness classes and wellness programs; a rooftop terrace and lounge with a fireplace and barbecue area; and 24-hour security. A free shuttle service takes residents to a new ferry dock, where they can connect to the San Francisco Ferry Building with daily service.

Hilly and natural, Yerba Buena Island lies in the middle of San Francisco Bay connected by a causeway to the flat, man-made Treasure Island, a former naval site. The Yerba Buena Tunnel (I-80) runs through the center of Yerba Buena Island and unites the western and eastern spans of the San Francisco–Oakland Bay Bridge.

The Bristol is a significant new project that is part of the [city's plan to remake the pair of islands into a dense hub of new housing.](#)

Around The Bristol, there are 72 acres of park land, five miles of walking and hiking trails and a calm-water beach.

“The reasons our buyers choose The Bristol are rooted in the unique lifestyle it offers,” Krysen Heathwood, senior managing director at Compass, said in an email to the Sacramento Bee. “The Bristol boasts a village-like ambiance complemented by abundant nature, green space, hiking trails and beaches. Its unmatched proximity to the water sets it apart from traditional city living, providing residents with an island retreat just minutes from the urban center.”

Bay Padel catches on at SF Treasure Island venue full of history

[KTVU](#), video, January 26, 2024

San Francisco's Treasure Island is one of the places you can play a sport you might not know too much about. The racquet sport called padel is catching on in a venue full of history.

Dear Treasure Island Authority Board, thanks (but really no thanks) for the toxic parks!

[SFBayview](#), January 22, 2024

The Navy says Treasure island is polluted with dangerous ‘forever chemicals’ that could be nearly impossible to clean up, which thwarts the Treasure Island Development Authority’s plans to bestow on the City of San Francisco a toxic swathe of land larger than Golden Gate Park.

To my neighbors:

I'm writing this article for you. You are a neighbor I care about who lives on Treasure Island in San Francisco Bay. Or you are a colleague, friend and neighbor who lives in Hunters Point. Or you are my neighbor living somewhere else in the City of San Francisco and, like me, you are affected by everything that happens here.

I am not only your neighbor. I am an investigator who has covered Treasure Island since 2014.

I'm here to tell you that no matter where you live in this city, for decades you have had the wool pulled over your eyes about Treasure Island. Many of you don't know that the island was built in the Bay out of landfill in 1936 by the Army Corps of Engineers for the Golden Gate International Exposition, a world's fair to celebrate the construction of the Golden Gate and Bay Bridges. You may be dimly aware that the Navy took it for the war effort in 1941, gave it back in 1997, and today it is a neighborhood of San Francisco with Zip Code 94130.

You may have read that the people who run Treasure Island are redeveloping it. San Francisco mainstream media has publicized the island as a new and improved marvel. Actually, Marvel Comics should create a green Treasure Island Superhero for Us Poor. This 404-acre piece of radioactive landfill is being converted into a community for the rich. Now, I ask you: Has this ever been done before in the City and County of San Francisco? (Tongue planted firmly in cheek.)

These same people do not want you to know what I have been trying to expose for years. An effective news blockade has been engineered by powers whose lowest priority is allowing public awareness of Treasure Island's excessive toxicity and whose highest priority is selling the high-priced apartments, condos and homes in this redeveloped place.

Some of you have heard extravagant claims about the new Treasure Island which, at this point, are painfully transparent to me. I look at this situation with a deep dish dollop of cynicism. In the face of massive corruption where people are whitewashing, greenwashing, masking the truth and lying their heads off, I laugh a lot and make jokes to keep my sanity. So, I will (not really) pay you two cents if you read this article all the way to the end where the most important stuff waits for you to show up. I feel this information goes to the heart of this City where we live.

A short history of Treasure Island's toxicity

During Treasure Island's 46 years as a naval base, Navy operations contaminated the soil and groundwater with radiation, chemicals and heavy metals. From 1965 to 1985, the Navy built a community of townhouses for sailors and their families over its own toxic garbage dump. By EPA mandate after naval bases were decommissioned in the '80s, all these toxins must be cleaned up. The Navy complied and named the community where people still live remediation zone Site 12. Site 12, the first area of elevated toxicity, constitutes a third of the island and faces the Golden Gate Bridge.

A second area of elevated toxicity is Site 6. Site 6 is a much smaller area of land abutting Site 12. Site 6 is a meadow near the wastewater treatment plant across from the Navy's old firefighting school, Austin Hall. For nearly 50 years, from 1944 to 1992, sailors were trained to set and extinguish fires in this field. Following EPA remediation mandates in the 1990s, the Navy turned the area into a cleanup zone and called it Site 6. One of the most toxic chemicals on earth, dioxin, a byproduct of burning, was deposited in Site 6 soil.

In addition, the Navy recently disclosed that Site 6 is contaminated with Per- and Polyfluoralkyl Substances, PFAS for short. PFAS are chemical ingredients in Teflon coating in pans and in Aerosolized Firefighting Foam (AFFF) used to put out fires. This foam was used by students in the Navy's firefighting schools to extinguish fires. Both Dioxin from burning and PFAS from AFFF take a long time to break down. PFAS are a combination of chemicals created to resist the breakdown process. PFAS are called "Forever Chemicals" because they persist in the environment and the human body. The Navy admits that the complexity of PFAS will make them so difficult to clean up that they have not yet been able to devise a remediation plan to get rid of them.

PFAS are found not only on Treasure Island but in global waterways and, hence, the bloodstreams of people all over the world. PFAS weaken the human immune system, cause tumors, liver damage, fertility problems, thyroid disease and cancer.

Add to this, the Navy also recently disclosed that besides its presence at Site 6, other areas across Treasure Island are polluted with dangerously toxic PFAS.

The Navy's recent exposure of the presence of PFAS in Treasure Island soil has effectively blocked the Treasure Island Development Authority's bright idea to gift the City and County of San Francisco with a swathe of toxic land which includes both Site 12 and Site 6, takes up a third of the island's 404 acres and is larger than Golden Gate Park.

Mad dash to Treasure Island

You know how jolting it can be when you make one set of plans and then they abruptly change. On Wednesday, Dec. 13, 2023, a friend who lives on Treasure Island texted me that in a short two hours she was picking me up from my home in the Marina and driving me out to the island for a 6:30 p.m. meeting of the semi-annual on-island Treasure Island Development Authority Board.

For years, I have successfully avoided the monthly TIDA Board meetings in Room 400 at City Hall where for hours it chews over the mind-numbing minutia of island operations. Every six months, however, the TIDA Board entourage lowers itself to the level of Us People and shows up on the island. Because islanders come in droves, these are meetings are worth attending.

The sole mission of the Treasure Island Development Authority Board, which serves at the pleasure of the mayor. is – as the name indicates – a money-making proposition. Its job is to develop and redevelop the island and sell high-priced condos, not to listen to islanders' concerns. For this reason, and through some legislative atrocity fashioned in Sacramento, the "directors" are not required to respond to island business owners or residents who get up from their chairs in the cheap seats and line up at the mic for public comment. Islanders either confront this small relatively toothless government body with well-reasoned requests for fair treatment – which they never get – or naïve and impassioned pleas for help – which they also never get. Given all this, you will not be surprised when I tell you that I see this board irreverently through Alice's eyes and think to myself, "Treasure Island is not Wonderland, and you are nothing but a pack of cards."

The morning of Dec. 13, in a state of undress, I had settled in comfortably at home planning to phone in a public comment from my couch. I had prepared something serious. I wanted to say publicly that people on the TIDA Board planned to present to the city part of toxic Treasure Island as a park. I

probably should have known that three months earlier on Tuesday, Oct. 17, 2023, the San Francisco Board of Supervisors had permanently cancelled call-in comments to public meetings. This seems a major stab at the democratic process until you hear the reason. Supervisor Asha Safai explained recently that since Hamas attacked Israel and Netanyahu began razing Palestine, outraged citizens call in with angry statements that are – of course – off topic.

My friend's surprise text launched me into a flurry of activity, throwing on clothes and preparing cameras. (I never go to Treasure Island unarmed. I carry a video camera to document everything.) I had to switch my mental inertia from "Hell No! I won't go!" to "Quick! Get me dressed." My beloved friend was a saint for offering me this ride to the island. I couldn't miss the opportunity to capture this gang of thieves on video in person.

That is why, in the early evening dark, I found myself sitting next to her as she deftly navigated traffic behind a huge Silicon Valley bus down Van Ness Avenue past that self-same City Hall.

When you view the accompanying video, you can see the whole event starting at this point. Lucky you can hear me say, "So, we're going to go to this TIDA Board meeting.

"This street is lit up like Christmas. It's 5:55 p.m. Are we going to make it by 6:30?"

Her skillful driving got us across the Willie Brown span of the Bay Bridge. She entered Treasure Island negotiating a series of confusing but elegant concrete ramps newly constructed by CalTrans to handle anticipated future heavy traffic into this rebuilt neighborhood. These curves wound uphill to Yerba Buena island past the Bristol condominium. Lights glistened off Clipper Cove below us as we plunged in the dark down McCalla Road and turned right onto the Island.

Cloud Cuckoo Land

As we entered the old Navy gym on Ninth Street and Avenue M, the crowd was gathering inside. Most of the folding chairs were still empty. People lined up along the far wall at a buffet table picking up food supplied by Meesun Boyce, owner of Mersea Restaurant, a popular spot where you can sit and eat and look at the City and the Golden Gate Bridge. Meesun always gives me something for free. This time it was a huge chocolate chip cookie – full of delicious calories.

I panned the room with my video camera past the mic where I expected to stand and speak.

Five out of seven Directors showed up. They seated themselves one by one at a distance above us in their slightly raised "power seats," as if they were a royal court ensconced on a collective throne.

I swung my camera slowly past TIDA Board Vice President Linda Richardson, Directors Nabihah Azim, Timothy Reyff, LaShawndra Price-Breston, and Kate Austin, Commission Secretary to the Board.

TIDA Board President V. Fei Tsen addressed the noisy crowd: "Please come and take a seat and participate in the meeting."

Kate Austin called the meeting to order. "Good evening. Welcome to the Dec. 13, 2023, Treasure Island Development Authority."

President Tsen said, “Thank you, YMCA, for letting us have our meeting here today.”

Then, in her characteristic fashion, she began to wax exuberant. When Tsen describes redeveloped Treasure Island, my sense of reality flies out the window, and I find myself in a sort of Cloud Cuckoo Fantasyland. She paints a picture of redeveloped Treasure Island as an absurdly over-optimistic, unrealistically idealistic place.

Bottom line, Tsen seems to be both whitewashing and greenwashing the island. For all I care, she can purple wash it. Nothing like what she describes could be that perfect. And, it isn’t.

“It’s easy to forget all the milestones that we have reached,” Tsen bragged.

True. New buildings seem to have sprouted in record time out of the toxic sea-level spongy soil that is highly vulnerable to earthquakes, is sinking a foot a year, and by the 2050s could be inundated by rising sea water.

“I am proud this year of the affordable housing that we built.” She apparently forgot about the hot mess at the 105-unit Maceo May Swords to Plowshares apartments, caused, some say, by the use of cheap labor. In October 2021, while the building was under construction, an atmospheric river sent heavy rains pouring in through the roofless opening at the top causing \$35 million dollars worth of damage. Replacement funds must have been secured because in short order formerly homeless vets began moving into the tiny apartments. Truth to tell, those grateful veterans do report serious structural problems left behind by the washout in accouterments like the building’s plumbing.

She also failed to mention that many residents, mostly of color – who were “rescued” from homelessness on San Francisco streets as early as 1998 and who have poured their blood, sweat and tears into the island for 26 years – are being denied spots in the new housing. Some residents are confounded by a diabolical arrangement involving a lottery called Dahlia. The process is so purposely confusing that I hesitate to write about it for fear of spreading misinformation.

I am told by Islanders that, whether they are market rate renters or subsidized residents who desperately need “affordable” housing, most people don’t understand the system, and almost no one is guaranteed the home they were promised. The original “rescue” from homelessness is causing enormous stress and generating homelessness again. A few who can afford it are moving off the island.

From the beginning, some of us have believed that TIDA’s actual agenda was to use middle income, poor and people of color to generate income from subsidized and low market rate rents. When these rents were no longer needed, accidentally-on-purpose evictions and desperate move-outs would be set in motion to make way for the rich. Whatever the motive, this, in effect, is what is happening.

Bobbing across the Bay on the new ferry

Tsen crowed about the next great accomplishment. “Let’s also applaud the new ferry landing,” she said.

That, indeed, was a success. Construction began on the ferry terminal in 2019. When I was at administration Building One for a RAB meeting that year, I hailed a pile driver walking away at the end of his shift. He called back that he was enjoying his work on the terminal and was getting good pay.

The ferry officially opened for business near Clipper Cove on March 1, 2022. In June 2023, we climbed aboard a ferryboat that bobbed like a cork across the Bay to San Francisco and back. We followed this sea adventure with a trip around the community on a tiny self-driving van called The Loop (which at that point had an attendant). We ended up at the Gold Bar in the Rotunda inside Building One. I was given several free liqueur tasters by the convivial and welcoming staff. My friend enjoyed a non-alcoholic drink. We had a very good time.

CalTrans ramps project

Then Tsen mentioned “the new freeway ramps.”

This has not been a success.

On Tuesday, Aug. 8, 2023, when we crossed the San Francisco-Oakland Bay Bridge headed to a Navy Restoration Advisory Board (RAB) meeting, without warning, the familiar right turn onto the causeway that attaches Treasure Island to Yerba Buena Island had been closed off. Island business owners complained that the confusing signage directing traffic to an alternate entrance appeared too late over people’s heads, and vendors couldn’t find their way onto the Island. Neither could we. We were forced through the Yerba Buena Island tunnel without enough time to slide several lanes to the right to reach the new entrance before it whizzed by.

It took 20 minutes of extra drive time to travel the long Bay Bridge span all the way to Oakland and back to the Yerba Buena Island exit on the right. From there, we navigated a complex of curving concrete ramps up a steep incline and emerged at the top of McCalla Road, the only access road onto and off Treasure Island and Yerba Buena Island. The Bristol condominium loomed over our heads. We plummeted down McCalla too close to cement mixers and trucks crawling next to us up the narrow lane to our left. Treasure Islanders complain about heavy traffic on this tight road where delivery vans haul furniture to Bristol condos. Semis have jackknifed and buses have turned sideways. They also report that the downhill drop and uphill climb is playing havoc with their transmissions and brakes. At the bottom of this steep hill, McCalla Road turned right onto Treasure Island Road. This got us to the RAB meeting, thankfully on time.

In the five months between the Aug. 8 RAB meeting and the Dec. 13, 2023, on-island TIDA Board meeting, CalTrans had constructed a new winding concrete ramp between Yerba Buena and Treasure Island. However, this time on our way to the on-island TIDA board meeting, we were driving in the dark, so I can’t tell you where the ramp went.

I called Muni several times trying to get information to accurately describe the new Caltrans ramps. The operators knew the normal island stops, but because none of them ever takes Muni there, they were unable to describe the way on or off. As far as I have been able to determine, as of this date, Caltrans’ new entrance and exit ramps are different from each other.

Since Caltrans is in the process of constructing these access routes entering and exiting the islands, parts of the road are blocked off differently day to day. The best I can do is post photos. You’ll have to use your ingenuity to figure out the routes. But if you decide to run the gauntlet, check CalTrans online for updates.

One more word about Treasure Island traffic. The Treasure Island Redevelopment Authority Board has reconfigured the street grid with fanciful nautical names like Seven Seas and Trade Winds Avenue. Seven Seas Avenue is a long narrow east-to-westbound street connecting Ninth Street and Clipper Cove Way. (See the map.) In line with TIDA's plan to reduce vehicle traffic in its new sustainable ecovillage, parking is not allowed along Seven Seas Avenue. Island resident Jeff Kline calls this "scarcity by design" and describes traffic hazard conditions up and down Seven Seas caused by illegally parked cars. Another resident who shall not be named complains that there are few bus stops accessible to disabled veterans living in the Maceo May apartments on Bruton Street and Seven Seas Avenue. This creates difficulty for people pushing walkers and riding in wheelchairs. It seems that lack of advance planning or simple neglect is making life harder for modest and low income Treasure Island residents, three quarters of whom are poor and people of color.

Tsen continued to tick off victories – "new roads and underground utilities and Vista Point. We look forward to completion of the Cityside Park – more bike and pedestrian pathways."

Poisoned parks

A thoughtful young guy in a casual white shirt gave up his seat to help me escape potato chip bag rattling sounds on my video footage by the hungry, uncooperative woman sitting next to me.

He turned out to be a CMG landscape architect . He walked to the mic and described extensive plans for parks.

I asked myself whether he had been informed that Treasure Island soil and groundwater are still saturated with radiation and chemicals and that anyone who visits these parks will take a risk with their health and perhaps even their life.

Six months previously, in June of 2023, I had attended and videoed the first on-island meeting after the pandemic at which V. Fei Tsen first began pumping the idea of parks. She reminded attendees that during the pandemic we learned "how important it is to have parks and open space." She stated that "the most remarkable feature of the Master Plan – a gift to all of us, to this community as well as to San Francisco – is that the 300 acres of open space and parks ... will be the largest addition to the City's park system since we built Golden Gate Park." By the next meeting on Dec. 13, Tsen was somehow able to expand the amount of land in this huge park to 500 acres.

Nine years earlier in 2014, Keith Forman, the Navy's environmental cleanup coordinator at the time, announced that the northern one-third of the island facing the Golden Gate Bridge would be called "Wetlands and Wildlands" and turned into a huge park.

Tsen repeated Forman's words almost exactly. "We're going to have wetlands and wild natural areas at the northern edge of the island." Apparently, this was a longstanding master plan known by both Forman and Tsen but not by most of the rest of us. I suspect the decision was made to back off on housing construction in this acreage because the soil is so polluted. A project manager at one of the Navy remediation update meetings I attended said that soil gas could expand inside structures, and buildings could blow up.

San Francisco seems to have a pattern of turning former toxic land into parks. Just as the City created Crissy Field out of the military's former garbage dump in the Presidio, the Treasure Island Development Authority Board, a city department, is prepared to convert parts of the Treasure Island Superfund site into a City park.

In March 2015, during construction of the Doyle Drive Project, I walked to Crissy Field, which is near where I live. The most common toxin buried in Crissy Field is petroleum. However, I learned from crews installing new streetlights near Doyle Drive that they were told to be prepared to call in bomb-sniffing dogs if they encountered unexploded ordinance. UXO detonations had been reported in the press. I also visited the military archives at the old horse stable and learned there were deposits of radioactive material under the veterans building in the Presidio. Don't worry, though. Some vets told me they have a consolation prize: great views of the Golden Gate Bridge.

Landscape architecture rock stars

After the CMG architect's presentation at this Dec. 13 meeting while he was still standing at the mike, Tsen jubilantly complimented him. "We've got an incredible landscape architecture team and several landscape architects. In fact, one of the gardens that we showed at Hilltop Park, which is, as you (the CMG architect) said, the crown jewel on Yerba Buena Island – is being designed by Walter Hood who is an African-American landscape architect who is well known. He's sort of like a rock star in the landscape architecture field.

"We have a diversity of designers who are working on the island creating these world class parks for us – for us on the island as well as for the city as well as for the region. And, we hope also that some of the artwork that will come here will also be internationally known."

Her comments soared to grandiose heights, then plunged into the murky depths of an environmentally inaccurate rationalization.

Sustainability on a Superfund site?

(Yes indeed! Despite loud cries to the contrary, Treasure Island is indeed a Superfund Site. In the 1980s the EPA's computer measured Treasure Island's Hazard Ranking System toxicity score at 51.78. The number qualifying it for Superfund status is half that amount at 28.5. On that basis, Treasure Island was given Superfund site number CA71700233330).

Tsen plowed on: "The design has really been about sustainability," she said.

From the beginning of the redevelopment process, publicity has ground on relentlessly claiming that the new Treasure Island will be made into an environmentally "sustainable" ecovillage. Considering that the land beneath the new construction continues to be thoroughly polluted with radiation, weapons grade chemicals and heavy metals, this will be an impossible goal to achieve.

Tsen continued: "Many of the parks have stormwater features. It is a way to gather the stormwater and let it drain naturally through the gardens so that the water, when it's released into the Bay, is naturally clean."

I put on my mental brakes. Whoa! Stormwater gardens can strain solid particles out of dirty rainwater. But, they cannot leach out PFAS “forever chemicals,” or regular chemicals, or weapons grade chemicals, or radiation with its millions of years of half-lives. All four toxin types were deposited by the Navy when it held the island as a base.

In addition, the Navy and TIDA’s strange fixation on convincing the public they are stopping Treasure Island’s polluted water from flowing into San Francisco Bay seems a little hysterical. Any researcher worth their salt will tell you that San Francisco Bay is thoroughly contaminated with radiation and chemicals and lead from petroleum following the 2007 Cosco Buson oil spill. Treasure Island has already made a huge contribution to toxins in the Bay.

Tsen continued riding the grandiosity train: “We’re at the cutting edge of doing this type of work in the country for the stormwater drainage.”

TIDA Board Vice President Linda Richardson joined in, expanding Treasure Island’s global reach. “I just wanted to echo what you just heard from the president of the commission. There is no other project of this kind in North America, in fact, in the world.”

In the universe, the cosmos, all of God’s creation, infinity and beyond, I murmured under my breath.

My public comment reality check

Following these extravagant proclamations, my two-minute reality check during public comment must have been a real downer. At the spring meeting, Tsen had said, “Let’s build Treasure Island up. Let’s not tear it down.” I imagined rolling eyes. There goes Negative Nelly again.

I began my presentation by identifying myself. “My name is Carol Harvey. I’m an investigator, and I’ve been working on Treasure Island since 2014.

“I’m addressing today the wisdom of creating a park over toxic soil at the side of the island facing the Golden Gate Bridge, Alcatraz, Angel Island, Berkeley and Oakland.”

Let’s cut away from my presentation and flash back to that previous fall – Tuesday, Aug. 8, 2023, when we were forced to drive all the way to Oakland and back to attend the RAB meeting. During the update at that meeting of Treasure Island’s toxic cleanup by Dave Clark, the Navy’s lead remedial project manager, he said (and you can watch him say this on the accompanying video), “We have yet to select those final remedies for Site 12, the housing area.”

I earnestly hoped Clark meant that the Navy still had to do a lot of work to ensure that after the occupied townhouses are demolished, the exposed ground beneath them isn’t still contaminated with chemicals and the off-the-charts radiation levels that exist there now and are making the residents sick.

PFAS and tumors

In addition, Clark said, “The emerging contaminant of PFAS, Per-and Polyfluoralkyl substances – we have not selected a remedy for that yet.” He meant the Navy hasn’t even begun to formulate a cleanup plan.

Now let's return to my presentation, which repeats information in my introduction that cannot be stressed enough: "PFAS were found at Site 6, the area close to the wastewater treatment plant.

"PFAS are an ingredient in Teflon in nonstick pans. PFAS ended up near the wastewater treatment plant in the 1950s when sailors set and put out fires with firefighting foam at the Navy's firefighting school.

"PFAS are known as 'forever chemicals' because they were created to last and are extremely persistent in the environment and the human body. Contact with PFAS in the soil and groundwater can damage the human immune system and the liver, cause cancer, thyroid disease, obesity and fertility issues."

Recently in 2023, a Navy man who contacted me after reading my articles in the San Francisco Bay View newspaper told me that in 1986 at age 19, he attended the firefighting school on Treasure Island. He described being exposed to PFAS during firefighting training when he put out fires in the Site 6 field located between the wastewater treatment plant and Northpoint Drive. There, teams of Navy students hosed down set fires with Aerosolized Firefighting Foam, AFFF.

Later, when he became a firefighting instructor on a ship, he descended up to his neck into tanks of the foam to do repairs. Some years later, brain matter began leaking into his ear through a perforation in his skull. Doctors told him he had a brain tumor, subjected him to chemotherapy, and covered the hole with a titanium plate. He also has tumors in his legs and lungs.

In a famous court case dramatized in the 2019 movie "Dark Waters" starring Mark Ruffalo, a farmer's cows lost weight, developed tumors and died after Dupont dumped runoff containing PFAS onto his West Virginia farm.

I was shooting blanks

As I expected, they turned off the mic at two minutes. I wasn't finished, but I did get the important bits in. However, the laugh was on me. I had turned away from the microphone to let a person in the front row video me, and many people in the room couldn't hear my voice.

The rest of this article follows the accompanying video, which includes what would have been the rest of my presentation. I spliced Dave Clark's statements into the footage so you can verify that I quoted him correctly. Please watch the video so you can see and hear what he and I both said.

Clark reported that PFAS "was designed to stay around for a long time" by combining many chemicals together.

"Now, we have to reverse engineer, taking these chemicals apart." That means the Navy must separate and understand individual PFAS' chemical components in order to devise ways to get rid of all of them.

"It's going to take some time," Clark cautioned, but, "if you can't destroy it, you need to be able to perhaps contain it."

He was being realistic. His team might never be able to clean up the PFAS from Treasure Island. That's why it's called a "forever chemical."

Here is some information so startling to a Treasure Island friend that he advised me I should make this the headline and main subject of this article. Clark disclosed that PFAS are not just isolated to the area around the wastewater treatment plant. They are spread across the entire island. In a responsible move, the Navy tested for PFAS at 11 locations. You can see them on the accompanying map. Clark verified: "These specific sites were chosen. We detected PFAS in the groundwater at all of the locations." This means that anyone walking around the island can be exposed to PFAS.

The Navy anticipates completing some of this work by, in Clark's words, "maybe early 2029." But, said Clark, "we're just at the beginning of the science here. So, the Navy is constantly monitoring – monthly, weekly sometimes – what's going on in the world of PFAS.

"Yes," he said, "there are talks about parks and open spaces and wetlands. But, I think we're a long way from that actually happening because we (the Navy) need to go through our process and do it correctly."

Thanks so much for the toxic green space larger than Golden Gate Park

Despite the Navy's acknowledgment that PFAS has been deposited in many locations across the island, architects at the aforementioned highly regarded landscape architecture firm CMG posted on their website an illustration of a huge beautiful park in which people are picnicking and children running around on an emerald green blanket. This enormous park will stretch east to west from the Golden Gate Bridge side of the island toward the Bay Bridge and the City. The large grassy area depicted in the drawing will conceal the PFAS contamination under the carpet of green grass and Site 6 soil along with any residual radiation or chemicals like lead or arsenic the Navy leaves in the ground beneath demolished townhouses in the former community, the Navy's toxic Site 12.

If runners, picnickers or children scampering about accidentally kick up dirt from exposed areas in the grass, they could develop all the previously enumerated diseases – tumors, weakened immune systems, liver damage, fertility problems, thyroid disease and cancer.

It flies in the face of the health and safety of San Franciscans and Bay Area visitors to present as gifts to the city these contaminated parks on Treasure Island's "wetlands and wildlands." Such a Trojan horse offering will amount to nothing more than a green swathe of toxic land "larger than Golden Gate Park." And, who needs a "gift" like that?