

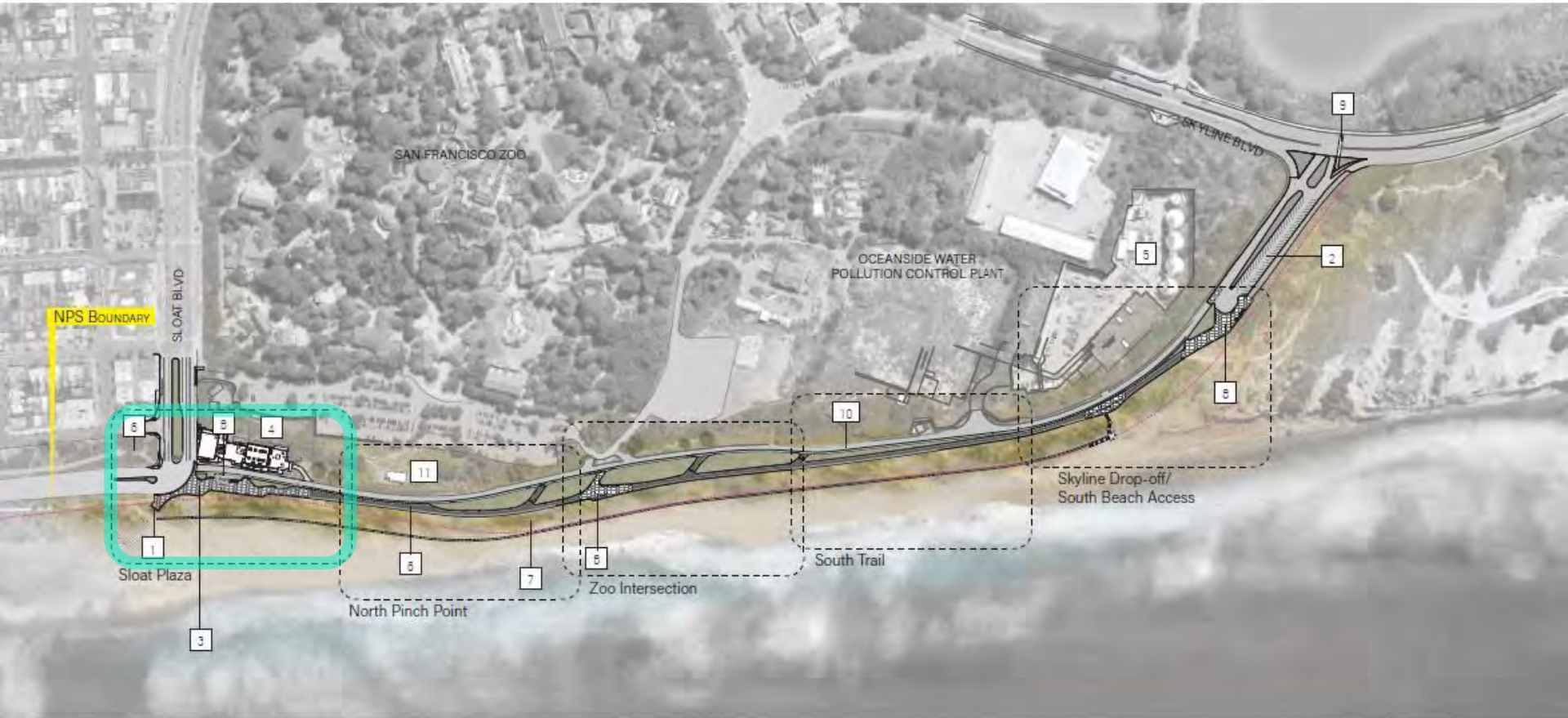


WESTSIDE PUMP STATION RELIABILITY IMPROVEMENT PROJECT
PUBLIC ART PROJECT

Design Development and Construction Documentation

VAC – DECEMBER 13, 2023

WESTSIDE PUMP STATION RELIABILITY IMPROVEMENT PROJECT



KEY

- 1 SAND RAMP MAINTENANCE VEHICLE ACCESS
- 2 SKYLINE PARKING LOT
- 3 SLOAT PLAZA
- 4 WESTSIDE PUMP STATION

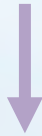
- 5 OCEANSIDE WATER POLLUTION CONTROL PLANT
- 6 LOWER GREAT HIGHWAY SHARED USE TRAIL
- 7 STABILIZATION | NATIVE REVEGETATION
- 8 SKYLINE DROP OFF AREA

- 9 CROSSWALK TO LAKE MERCED
- 10 SERVICE ROAD (ONE-WAY)
- 11 COASTAL CONSERVATION CENTER

SCALE
1"=300'



WESTSIDE PUMP STATION RELIABILITY IMPROVEMENT PROJECT



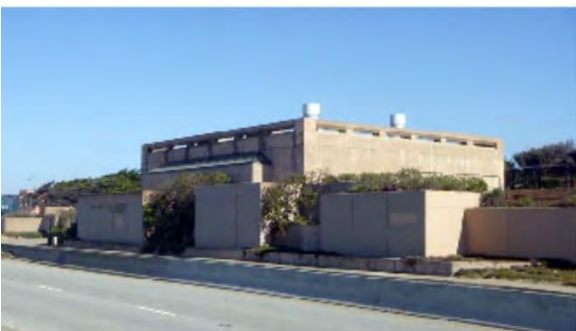
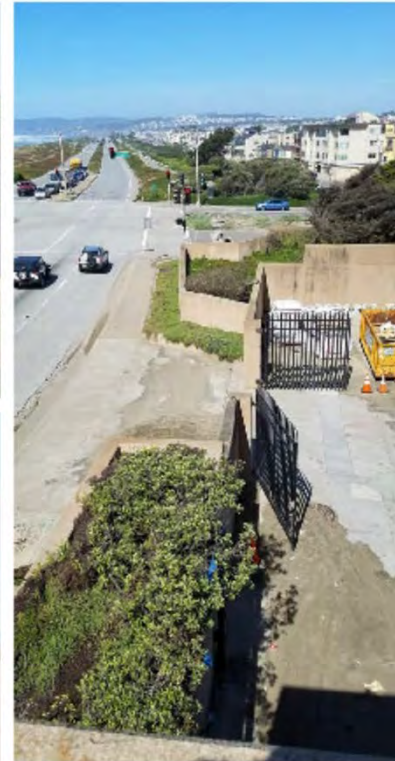
WESTSIDE PUMP STATION RELIABILITY IMPROVEMENT PROJECT



WESTSIDE PUMP STATION RELIABILITY IMPROVEMENT PROJECT



WESTSIDE PUMP STATION RELIABILITY IMPROVEMENT PROJECT



PUBLIC ART PROJECT GOALS

- Create an artwork that will beautify and complement the architecture of the building.
- Enhance the building's connection to the site by reflecting SFPUC's mission of providing high quality, efficient and reliable water, wastewater and power services to the City in a manner inclusive of environmental and community interests.
- Have visibility and presence from a distance.

ARTIST'S CONCEPTUAL PROPOSAL - JUNE 5, 2017



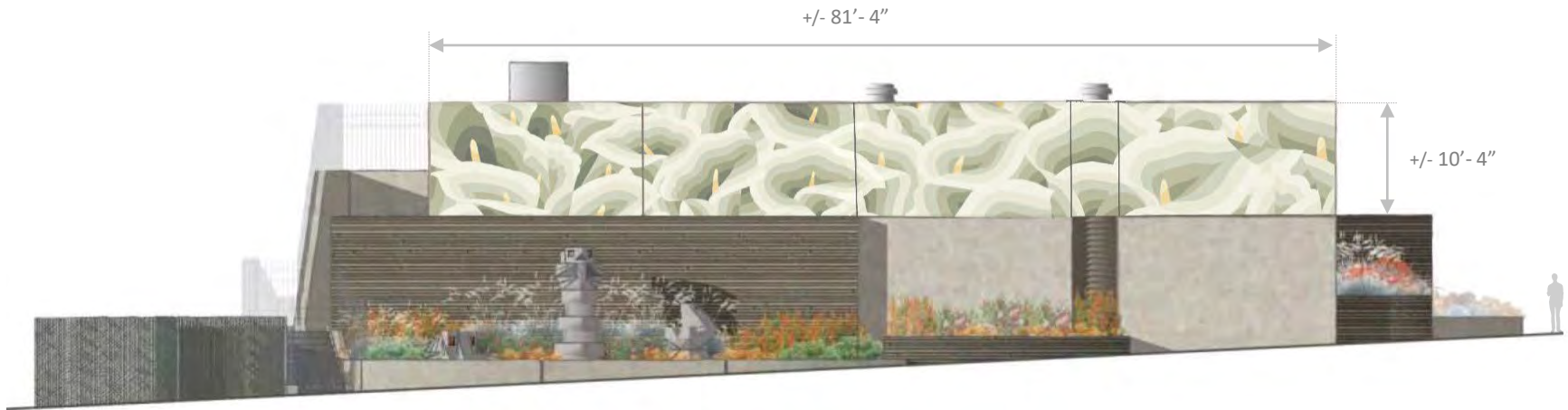
ART LOCATION – ARTIST'S CONCEPTUAL PROPOSAL



ART LOCATION – FINAL DESIGN



FINAL DESIGN – DECEMBER 13, 2023



Sloat Avenue View - North Facing



FINAL DESIGN – DECEMBER 13, 2023



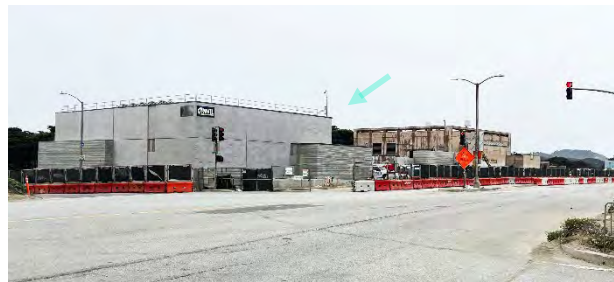
Great Highway View - West Facing



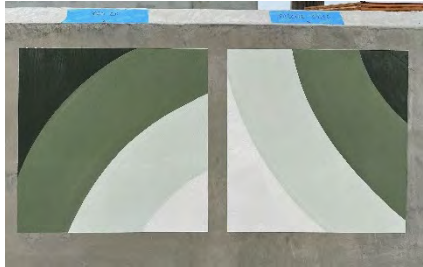
FINAL DESIGN – DECEMBER 13, 2023



South Facing



PAINT TEST + FINAL COLOR PALETTE



OCT 2022



JUN 2023



Sloat Avenue View - North Facing



Great Highway View - West Facing



South Facing



9382

9385

9395

9398

PROJECT TIMELINE

Design Development and
Construction Documentation Approval

December 2023

Mural Installation

April 2024

Rapid Set

WUNDERFIXX®

Concrete Smoothing Compound



PRODUCT DATASHEET

DESCRIPTION: Rapid Set® WUNDERFIXX® is a high-performance, gray concrete smoothing compound. WUNDERFIXX is a blend of Rapid Set hydraulic cement, high-performance polymers, self-curing technology (SCT) and finely ground aggregate. Mix WUNDERFIXX with water to produce a workable, easy-to-apply mixture with excellent bonding characteristics. Trowel apply WUNDERFIXX to achieve a smooth and uniform finish. After applying, WUNDERFIXX may be sanded within 24 hours to achieve an ultra-smooth finish.

USES: Use WUNDERFIXX for cosmetic patching, detailing and smoothing on tilt-up panels, precast, formed work, concrete block and other concrete and masonry surfaces. Durable in wet environments, it is suitable for both interior and exterior applications. WUNDERFIXX may be used on vertical, overhead and non-wearing horizontal surfaces.

ENVIRONMENTAL ADVANTAGES: Use WUNDERFIXX to reduce your carbon footprint and lower your environmental impact. Production of Rapid Set cement emits far less CO₂ than portland cement. Contact your representative for LEED values and environmental information.

APPLICATION: Apply WUNDERFIXX in thicknesses from skim coat to 1/2" (1.3 cm). For thicker applications, use appropriate Rapid Set® repair products. Consult your CTS Cement Representative for more information and training.

SURFACE PREPARATION: Application surface must be clean, sound concrete that is free from any materials that may inhibit bond, such as form release, oil, curing compound, acid, dirt and loose debris. Apply WUNDERFIXX to a surface that is dry or saturated with no standing water. A test area should be applied to determine suitability in the repair environment.

MIXING: The use of a drill-mounted mixing paddle is recommended. Organize work so that personnel and equipment are in place before mixing. Use clean, potable water. WUNDERFIXX may be mixed using 6 to 8 quarts (5.7 L to 7.6 L) per 50-lb (22.7-kg) bag. Use less water to

[English ↗ \(https://www.ctscement.com/assets/doc/datasheets/WUN\)](https://www.ctscement.com/assets/doc/datasheets/WUN)

[Spanish ↗ \(https://www.ctscement.com/assets/doc/datasheets/WUN\)](https://www.ctscement.com/assets/doc/datasheets/WUN)

OVERVIEW

Highlights:

Easy To Use: Just add water, no admixtures needed

High Performance: Patch, sand and paint the same day

Ultra-Smooth Finish: Grit free and sandable within 24 hours

Excellent Bond: Bonds to concrete, brick, block, plaster and other

concrete and masonry surfaces

Self-Curing Technology (SCT): No water curing needed under normal conditions

Interior/Exterior: Water resistant and durable in wet environments

Conforms to:

ASTM C109

MasterFormat® 2016

03 01 40	Maintenance of Precast Concrete
03 01 50	Maintenance of Cast Decks and Underlayments
09 24 23	Cement Stucco

Manufacturer:

CTS Cement Manufacturing Corp. 12442 Knott St.
 Garden Grove, CA 92841 Tel: 800-929-3030 | Fax:
 714-379-8270 Web: www.CTScement.com E-mail:
 info@CTScement.com

TYPICAL PHYSICAL DATA

ASTM C109 Mod.

Age	Compressive Strength
24 hours	1000 psi (6.9 MPa)
28 days	2000 psi (13.8 MPa)

All data produced at 70°F (21°C)

achieve higher strengths. Do not exceed 8 quarts (7.6 L) of water per bag. For increased fluidity and workability, use Rapid Set® FLOW Control plasticizing admixture from the Rapid Set® Concrete Pharmacy®. Place the desired quantity of mix water into the mixing container. While the mixer is running, add WUNDERFIXX. Mix for the minimum amount of time required to achieve a lump-free, uniform consistency. Do not retemper.

INSTALLATION: At time of installation, the surface and ambient temperatures must be between 50°F and 90°F (10°C and 32°C). WUNDERFIXX has a working time of 30 minutes at a temperature of 70°F (21°C). Once in place, as the material becomes stiff (typically within 10 to 20 minutes), use a trowel to shave or cut the excess material to the desired shape. Material can be sanded, primed and painted the same day.

CURING: WUNDERFIXX does not require water curing or curing compound under moderate conditions at 70°F (21°C). In dry, windy or hot conditions, mist with water to maintain a continuously wet surface until the product has achieved sufficient strength.

COLD WEATHER: Environmental and material temperatures below 70°F (21°C) may delay setting time and reduce the rate of strength gain. Lower temperatures will have a more pronounced effect. Thinner sections will be more significantly affected. To compensate for cold temperatures, keep material warm, use heated mix water, and follow ACI 306 Procedures for Cold Weather Concreting.

WARM WEATHER: Environmental and material temperatures above 70°F (21°C) may speed setting time and increase the rate of strength gain. Higher temperatures will have a more pronounced effect. To compensate for warm temperatures, keep material cool, use chilled mix water, pre-wet substrate (saturated surface dry), and follow ACI 305 Procedures for Hot Weather Concreting. The use of Rapid Set® SET Control retarding admixture from the Concrete Pharmacy will help offset the effects of high temperatures.

YIELD & PACKAGING: WUNDERFIXX is available in 50-lb (22.7-kg) and 9-lb (4.1-kg) sizes. One 50-lb (22.7-kg) bag of WUNDERFIXX will yield approximately 115 ft² (10.7 m²) at 1/16" (1.6 mm).

SHELF LIFE: WUNDERFIXX has a shelf life of 12 months when stored properly in a dry location, protected from moisture, out of direct sunlight, and in an undamaged package.

USER RESPONSIBILITY: Before using CTS products, read current technical data sheets, bulletins, product labels and safety data sheets at www.CTScement.com. It is the user's responsibility to review instructions and warnings for any CTS products prior to use. As with all cement-based products, optical variations to the finished surface should be expected.

WARNING: DO NOT BREATHE DUST. AVOID CONTACT WITH SKIN AND EYES. Use material in well-ventilated areas only. Exposure to cement dust may irritate eyes, nose, throat, and the upper respiratory system/lungs. Silica exposure by inhalation may result in the development of lung injuries and pulmonary diseases, including silicosis and lung cancer. Seek medical treatment if you experience difficulty breathing while using this product. The use of a NIOSH/MSHA-approved respirator (P-, N- or R-95) is recommended to minimize inhalation of cement dust. Eat and drink only in dust-free areas to avoid ingesting cement dust. Skin contact with dry material or wet mixtures may result in bodily injury ranging from moderate irritation and thickening/cracking of skin to severe skin damage from chemical burns. If irritation or burning occurs, seek medical treatment. Protect eyes with goggles or safety glasses with side shields. Cover skin with protective clothing. Use chemical resistant gloves and waterproof boots. In case of skin contact with cement dust, immediately wash off dust with soap and water to avoid skin damage. In case of skin contact with wet cement, wash exposed skin areas with cold running water as soon as possible. In case of eye contact with cement dust, flush immediately and repeatedly with clean water, and consult a physician. If wet cement splashes into eyes, rinse eyes with clean water for at least 15 minutes and go to the hospital for further treatment.

Please refer to the SDS and www.CTScement.com for additional safety information regarding this material.



USGBC and related logo is a trademark owned by the U.S. Green Building Council and is used by permission.

LIMITED WARRANTY: CTS CEMENT MANUFACTURING CORP. (CTS) warrants its materials to be of good quality and, at its option, will replace or refund the purchase price of any material proven to be defective within one (1) year from date of purchase. The above remedies shall be the limit of CTS' responsibility. Except for the foregoing, all warranties expressed or implied, including merchantability and fitness for a particular purpose, are excluded. CTS shall not be liable for any consequential, incidental, or special damages arising directly or indirectly from the use of the materials.

WARNING: CANCER and REPRODUCTIVE HARM - www.P65Warnings.ca.gov

PROFESSIONALS	HOMEOWNERS	PRODUCTS	APPLICATIONS	ABOUT	CONTACT
Products (/product/category/professional)	Products (/product/category/homeowner)	From A to Z (/product/grid?q=)	Applications (/application/category)	Our Story (/about/ourstory)	Contact (/contact)
Applications (/application/category)	How To's (/resources/homeowner/howtos)	By Category (/product/category)		Brands (/about/brands)	
Resources (/resources/professional)	Concrete Basics (/resources/homeowner/concretebasics)	CSI MasterFormat (/product/masterformat)		Innovative Technologies (/about/innovation)	
Find A Dealer (/professionals/find-a-dealer/find-a-dealer-form.html)	Find A Store (/homeowners/find-a-store/find-a-store-form.html)			Leadership Team (/about/leadership)	
				Careers (/about/careers)	

[Become A Distributor \(/becomeadistributor\)](/becomeadistributor)

Contact Us






800-929-3030

CTS Cement Manufacturing Corp.

12442 Knott Street

Garden Grove, CA 92841

Connect With Us

 [\(/facebook.com/CTSRapidSet\)](https://facebook.com/CTSRapidSet)
 [\(/twitter.com/CTSRapidSet\)](https://twitter.com/CTSRapidSet)
 [\(/instagram.com/cts.rapidset\)](https://instagram.com/cts.rapidset)
 [\(/linkedin.com/company/cts-cement-manufacturing-corporation\)](https://linkedin.com/company/cts-cement-manufacturing-corporation)
 [\(/youtube.com/CTSRapidSet\)](https://youtube.com/CTSRapidSet)



TECHNICAL DATA SHEET

SOLDALIT®

SOL-SILICATE ALL SURFACE MINERAL FINISH

PRODUCT DESCRIPTION

SOLDALIT® Sol-silicate All Surface Mineral Finish is our very best exterior finish for previously painted masonry surfaces and for bare masonry of all types. SOLDALIT uses a proprietary formula combining silica-sol and potassium silicate binders, inorganic mineral pigments and fillers and an acrylate copolymer to form both chemical and mechanical bonds, even on the most difficult to paint substrates, without primer coats. This new-generation mineral silicate paint is ideal for finishing ceramic glazed tile and terra cotta, glass, non-ferrous metals, granite, marble, pebble-dash concrete and previous acrylic or latex painted surfaces. It is also ideal for all masonry surfaces exposed to severe weather conditions. **Tenacious adhesion is enhanced with SOLDALIT's nanoparticle technology that allows penetration of even the densest mineral or masonry substrates and provides a mechanical anchor to most existing organic, latex or acrylic paints that are in sound condition.**

SOLDALIT meets all requirements of DIN 18.363, 2.4.1 "silicate emulsion paint".

FIELD OF APPLICATION

SOLDALIT is applied typically as a 2 or 3 coat system and is recommended for new construction and renovation of sound acrylic and silicone resin-based paints, acrylic stucco, terracotta, bare masonry, concrete, stone and most other mineral substrates. It is ideal for restoration of historic structures and facades due to high vapor permeability coupled with water repellency. Do not use SOLDALIT over aged alkyd or oil-based paints, varnish or lacquer. SOLDALIT is suitable for vertical facade installations and inclined surfaces. Do not use on floors.

PRODUCT PROPERTIES

SOLDALIT protects masonry surfaces from the action of weather and prevents the penetration of atmospheric pollutants. It utilizes only lightfast inorganic mineral pigments and fillers and colors will not fade, even in harsh U.V. environments. SOLDALIT is available in a smooth or sand texture base.

- Sol-Silicate binder system penetrates masonry and chemically bonds—**won't peel or lose adhesion**
- Copolymer modification provides mechanical bond to previously painted surfaces (as outlined)
- Lightfast mineral pigments—guaranteed not to fade or lose brilliance
- Apply to a variety of mineral surfaces
- Very water vapor permeable, microporous
- Completely resistant to pollution
- Provides extreme weather resistance and water repellency
- Noncombustible—**won't add fuel or noxious smoke in case of fire**
- Beautiful, mineral matte finish
- Anti-static, inert finish—**won't attract or trap dirt or dust for walls that stay cleaner**
- Naturally mold, algae and fungus resistant—**no pesticides used**



KEIM Mineral Coatings, Inc.
10615 Texland Boulevard, #600
Charlotte, NC 28273
Tel: 704-588-4811
Toll Free: 866-906-5346
www.KEIM.com

Technical data

Density	1.6 g/cm ³
VOC (ASTM D6886)	< 1 g/liter
Organic Content	< 5%
Cured pH value	Approximately 11
Vapor Diffusion	sd (H ₂ O) = <0.01 m
Water Absorption Coefficient	W=0.20 kg/m ² h 0.5 (acc. to DIN EN 1504)
Lightfastness of color pigment (Fb-Code acc. to BFS technical bulletin No. 26)	A1 Best in class rating No color change after 4 years
Vapor Permeability (ASTM E96)	77 Perms
Flashpoint	Non-Flammable
Accelerated Weathering ASTM G154	2016 Hours Passes No change or deterioration of any type
Wind Driven Rain ASTM E514	Passes No water leakage
Mildew Resistance ASTM D3273/D3274	Passes—No fungal growth
Alkali Resistance ASTM D1308	Passes—no visible change at 24 hours
Chloride Ion Permeability	Permeability Class: Very Low
Surface Burning Characteristics ASTM E 84-08	Class A Flame Spread Index = 0; Smoke Developed Index = 0
Gloss at 85° ISO 2813	0.5 Mineral Matte Flat
All test results performed on 2 coats Soldalit applied at 300—350 sf/gallon	

Environmental Compliance

EPA	YES
LEED	YES
CARB	YES
SCAQMD	YES

Colors:

White plus full range of KEIM colors and custom-matched colors. Also available in monochrome color concentrates.

SPECIFICATIONS/SYSTEMS



For proper waterproofing and weather resistant performance, 2 coats of SOLDALIT must be applied at recommended coverage rates. Surface should be fully coated, with no pinholes, runs or holidays.

Concrete (all types)

Pretreat: Keim Heavy Duty Cleaner (if needed)

1 coat SOLDALIT diluted 10% with Soldalit Dilution

1 coat SOLDALIT as supplied

CMU Block

1 coat Contact Plus Grob Block Filler (as desired)

1 coat SOLDALIT diluted 10% with Soldalit Dilution

1 coat SOLDALIT as supplied

Masonry (brick and stone) and stucco

Pretreat extremely porous surfaces (if needed): Soldalit Dilution (mixed 1:3 with water)

1 coat SOLDALIT diluted 10% with Soldalit Dilution

1 coat SOLDALIT as supplied

Previously Painted Mineral Surfaces

1 coat SOLDALIT diluted 10% with Soldalit Dilution

1 coat SOLDALIT as supplied

Hard, Glossy Mineral Surfaces and Terracotta

Scuff sand or abrade glossy surfaces (if needed)

1 coat SOLDALIT diluted 10% with Soldalit Dilution

1 coat SOLDALIT as supplied

Added Water Repellency (on any mineral surface)

Pretreat: Silan 100 Silane Water Repellency

applied in multiple coats as needed to saturate

surface. CRITICAL RECOAT: Apply first coat of

Soldalit within 4—8 hours of Silan 100

application. DO NOT ALLOW SILAN 100

TO

DRY COMPLETELY.

1 coat SOLDALIT diluted 10% with Soldalit Dilution

1 coat SOLDALIT as supplied

Patched, Cracked and Irregular Mineral Surfaces

- 1 coat of SOLDALIT Sand Texture Base (Grob)*
- diluted 10% with Soldalit Dilution
- 1 coat of SOLDALIT as supplied

*Texture base is designed to provide a more uniform final appearance by adding a slight sand texture and can help fill-in cracks and voids up to 1/16" wide and deep. It is several shades lighter than final color to allow for full coverage of finish. Maximum particle size is 0.5mm quartz granules.

SURFACE PREPARATION

The substrate must be sound, solid, dry, clean and free of dust, grease, oils, salts, moss, algae and other substances that would prevent penetration and bonding. Old oil based coatings, loose substrate layers and loose latex or acrylic layers must be removed. Repair damaged areas as needed before painting. Clean mineral surfaces as needed with KEIM Heavy Duty or Light Duty Cleaner or KEIM Bio Cleaner.

Soft, porous or friable mineral surfaces, where substrate porosity is variable or aged existing mineral coats may be stabilized and consolidated by pretreatment with SOLDALIT Dilution. Mix 1 part Dilution with 3 parts fresh water and apply to porous surface to saturation. Allow surface to dry 12 hours before proceeding.

APPLICATION

SOLDALIT may be applied by brush, roller or airless spray.

- Brush - Use a nylon/polyester brush
- Roller - Use a ½" to ¾" nap synthetic roller cover
- Airless Spray
 - o Pressure: 3000 psi, minimum
 - o Tip: .035 in
 - o Remove filters from gun and pump, use 30 mesh filter on siphon tube only

First coat

SOLDALIT may be diluted up to 10% with Soldalit Dilution depending on the substrate's absorbency. Allow to dry 12 hours or overnight before recoating.

Top coat

Apply SOLDALIT undiluted, as supplied. There is no recoat window after the first coat has dried.

NOTE: For extreme weather conditions or critical, intensive color shades it is recommended to apply a three-coat system.

Application conditions

Ambient and substrate temperature: 40°F and rising and below 95°F. Do not apply in direct sunlight or on sun-heated substrates. Protect coated surfaces from direct sunlight, wind and rain during and after application for a minimum of 12 hours.

Drying times

Drying times are temperature, humidity and coverage dependent.

	<u>@ 40-50°F</u>	<u>@ 50°F +</u>
Touch:	4--6 hour	2--4 hours
Recoat:	24--48 hours	12 hours

Coverage

SUBSTRATE	COVERAGE*
Cast or Pre-Cast Concrete	275—325 SF/GAL
Fiber Cement Siding	275—325 SF/GAL
Brick and Masonry	225—275 SF/GAL
CMU Block (smooth)	100--150 SF/GAL
CMU Block (split faced or fluted)	50—75 SF/GAL
Portland Stucco	150—200 SF/GAL

*Stated values are based on our experience with a smooth finish. Surface texture, porosity, application conditions and type of equipment used will all vary consumption. Only a test application under production conditions will forecast consumption of the system accurately. For Sand Texture Base, subtract 25 SF from values above.

Cleaning

Clean spills, spatters, hands and tools immediately after use with soap and warm water. After cleaning, flush spray equipment with a compliant cleanup solvent to prevent rusting of the equipment. Tools should be kept in the paint material or in water during work breaks.

Mixing with other products



In order to maintain the specific features of SOLDALIT and the related system products, they must not be mixed with other products or additives nor must they be diluted with water.

PACKAGING

Quart, Gallon and 4 Gallon

STORAGE

Approx. 12 months in tightly closed container under cool, frost-free conditions. Protect from heat and direct sunlight.

DISPOSAL

Dispose of completely emptied containers in accordance with local, state and federal waste regulations. Any residues must be emptied out of containers before recycling.

HAZARDOUS SUBSTANCE CLASS

n/a

TRANSPORT HAZARD CLASS

n/a

Provide appropriate protection for surfaces which are not to be coated (e.g. glass, natural stone, ceramics etc.). Any splashes on surrounding surfaces or traffic areas must be rinsed off immediately with plenty of water. Protect the eyes and skin from splashes.

Keep out of reach of children.

The stated values and properties are the result of extensive development work and practical experience. Our recommendations for application, whether given verbally or in writing, are intended to provide assistance in the selection of our products and do not establish a contractual relationship. In particular, they do not release those purchasing and applying our products from the duty of establishing for themselves, with due care, the suitability of our products for the intended application. Standard building industry practices must be complied with. We retain the right to make modifications to improve the products or their application. This edition supersedes all earlier editions.

SAFETY INSTRUCTIONS





TECHNICAL DATA SHEET

FACEAL OLEO HD

CLEAR HEAVY DUTY ECO PROTECTIVE FINISH

PRODUCT DESCRIPTION

Faceal Oleo HD is a multi-purpose clear water proofing and protective finish for porous mineral surfaces. It is water based, extremely eco-friendly and protects porous surfaces against soiling by oil, grease and graffiti. It is a permanent protective finish and is not reversible. It does not alter the vapor permeability of surfaces it is applied to and has no impact on the surface appearance or finish.

FIELD OF APPLICATION

Interior or exterior applications on porous facades and is abrasion resistant to use on floors with foot traffic. Especially suited for masonry surfaces with small pores such as cast concrete and natural stone.

- Use on porous mineral paint and stain surfaces—does not alter color
- Protects concrete, stone, brick, tiles, terracotta, plaster, stucco and cast stone surfaces.
- Warm water wash to effectively remove soiling, graffiti, grease, etc.
- Protects art installations, and facades and horizontal surfaces from soiling and graffiti for up to 10 years

PRODUCT PROPERTIES

- Free from solvents
- Non-flammable
- Composed of fluorinated acrylic copolymers and silica sol in a colloidal aqueous solution
- Penetrating and permanent adhesion to the surface by strong ionic and hydrogen bonds that are thermally stable and chemically inert
- Highly vapor permeable does not alter water diffusion properties of the surface

- Extremely low surface tension results in highly water and oil-repellent finish
- Self-cleaning on vertical and inclined surfaces when it rains
- Retains original appearance of surface
- Resists abrasion from foot traffic on floors and horizontal surfaces
- Extremely low VOC

Density	1.0—1.1 g/cm ³
Weight	10.1 lbs/gal
VOC by ASTM D6886	< 1 g/liter
Vapor permeability (DIN 52615 and EN ISO 7783-2)	93—99% permeable
Boiling Point	100°C (non-flammable)
pH value	5.5—6.5
Solubility	Soluble in water

Environmental Compliance

EPA	YES
LEED	YES
CARB	YES
SCAQMD	YES

Colors: Colorless, low sheen

SURFACE PREPARATION

The mineral substrate must be sound, solid, dry, clean and free of dust, grease, oils, salts, moss, algae and other substances that would prevent bonding.

APPLICATION

Air and surface temperature: >41°F and up to maximum 86°F (5°C –30°C) with relative humidity below 80%.

Apply undiluted with an airless sprayer, a low pressure sprayer or by brush and roller for smaller areas. Highly absorbent or porous surfaces may



KEIM Mineral Coatings, Inc.
 10615 Texland Boulevard, #600
 Charlotte, NC 28273
 Tel: 704-588-4811
 Toll Free: 866-906-5346
 www.KEIM.com

require two coats. Do not allow Faceal Oleo HD to puddle or pool on horizontal surfaces. Excessive amounts should be removed before it hardens with a mop or microfiber cloth.

- Brush: Use a nylon/polyester brush
- Roller: Use a 3/8" to 1/2" nap synthetic roller cover
- Airless spray: 3000 psi suggested with a tip size of 0.15—0.17", minimum

Protect surfaces which are not to be coated. Any splashes on surrounding surfaces must be cleaned immediately with soap and water.

Drying times: Drying is temperature and humidity dependent. At least 24 hours between coats at 50% R.H. and 70°F. Surface may be subjected to full service after 7 days. Lower temperatures and high humidity can extend dry times.

Conditions: Apply when temperatures are between 40° and 90°F. Do not apply to sun heated surfaces. Do not apply when there is a threat of rain or frost within 24 hours of application.

Coverage

Substrate	Coverage*
Concrete (smooth)	300—400 SF/Gal
Limestone	40—50 SF/Gal
Brick/Masonry	150—200 SF/Gal
Stucco/Plaster	100—150 SF/Gal
Terra Cotta	250—350 SF/Gal
Precast Stone	200—250 SF/Gal
Marble/Granite	350—450 SF/Gal

*Coverage is dependent on surface porosity and texture, application methods, workmanship and conditions, and will vary.

Cleaning of tools

Clean immediately after use with water before Faceal Oleo HD begins to dry/harden.

Mixing with other products

Do not mix with other products or additives and do not thin with water.

PACKAGING

25 liter plastic jerrican

STORAGE

Up to 24 months in tightly closed container under cool, frost-free conditions. Protect from heat and direct sunlight.

HAZARDOUS SUBSTANCE CLASS

n/a

TRANSPORT HAZARD CLASS

n/a

DISPOSAL

Any residues must be emptied out of containers before recycling. Dispose of or recycle completely emptied containers in accordance with local regulations.

SAFETY INSTRUCTIONS

Never pour contents into drains, waterways or the ground. Avoid contact with eyes and skin. In case of contact with eyes, flush immediately with plenty of water and consult a physician. Wear suitable gloves. Wash hands or affected skin thoroughly after exposure. Do not swallow. If swallowed, seek medical attention immediately.

Keep out of reach of children.

The stated values and properties are the result of extensive development work and practical experience. Our recommendations for application, whether given verbally or in writing, are intended to provide assistance in the selection of our products and do not establish a contractual relationship. In particular, they do not release those purchasing and applying our products from the duty of establishing for themselves, with due care, the suitability of our products for the intended application. Standard building industry practices must be complied with. We retain the right to make modifications to improve the products or their application. This edition supersedes all earlier editions.

