

# CHARLES GADEKEN

## ***Entwined 2023-24:***

a site-specific light installation for Golden Gate Park at Peacock Meadow

- Brief narrative description of the proposed project.....page 2
- Artist Description.....page 2
- Proposed dates and location.....page 3
- Art Description.....page 5
- List of proposed materials.....page 10
- Maintenance plan for the duration of display.....page 10
- Funding.....page 10

## Entwined 2023-24 Installation in Golden Gate Park

Charles Gadeken's Entwined Meadow from 2020 through the winter of 2023 has been a delightful experience for all who visited the installation. For the installation's 2023-24 plan we look forward to bringing a whole new dynamic piece to the mix, Elder Mother, to bring more magic, playfulness, and wonder to a critical mass of Bay Area residents and visitors to enjoy.

### Entwined Description:

**Entwined Meadow** is a site-specific installation creating a monumental, world-class environment consisting of a variety of large metal sculpted, whimsical flora that includes thousands of individually addressable light pixels, and interactivity. The arrangement of elements in the installation creates twisting paths to be explored, trees to sit under, large flowering clusters to run around and admire, and constantly changing vistas of light and magic. The dynamic topography of light and color results in a multidimensional visual experience through coordinated programming across all the sculptural elements. Interactive features allow attendees to control the lighting effects and patterns of some of the pieces.

### Proposed for 2023-24:

An exciting new addition to the flora this year is Elder Mother, which debuted in Burning Man this year, as it received an honorarium from residents and visitors alike. Elder Mother is a magic, monumental, awe-inspiring, shade-bearing tree that moves in the wind and speaks through the language of light and color. The 30-ft metal sculpted tree carries a 25-ft canopy offering a place for animals to gather day and night with ever-changing, interactive illumination of endless color and delight.

## Charles Gadeken: Artist Statement

Charles Gadeken is an award-winning industrial artist working in the creative field for over 25 years, whose monumental interactive public artworks reimagine the world post-nature. Artwork commissions include Black Rock Arts Foundation, City of San Francisco, Insomniac Events, Coachella, Absolut Vodka, City of Palo Alto, City of Calabasas, City of Los Altos, Stanford University, and more. Many of Charles' works have been exhibited internationally.

Skilled in manipulating metals, Charles makes copper, bronze, and steel pieces of varying dimensions and functionalities. Inspired by the objects, structures, and processes in the world around us, his art depicts natural objects in fantastic ways and realizes the potential for serendipity in everyday life. He often incorporates and develops technology for various effects in many of his projects—LEDs, flame, hydraulics, and electricity to increase the work's visual and physical impact. These effects instill a sense of joy, wonder, amazement and play into the environment.

Focused on engaging the imagination in the objects created and the method of their creation, Charles dedicates his work to increasing artistic community and public awareness of art. Many pieces are interactive, encouraging spectators to become participants in the artistic experience. In addition to making art, his artistic practice encourages others to do so and has inspired hundreds of people to participate in art-making for multiple projects. Charles also aims to create public art that contributes to and celebrates the community and increases public interest and connection to the place and region.

Materials used are durable, long-lasting, and designed and engineered to endure, be safe and easily maintained. Charles works collaboratively and successfully with community members, volunteers, professional artists, engineers, and city employees to inform the work, fabricate, install, and maintain projects. Charles' years of experience have afforded him an understanding of the full scope of what is necessary to complete complex art projects that stand the test of time, both aesthetically and physically, on time and on budget.

## Proposal

**Proposed Location: JFK Drive, at Conservatory Drive East**

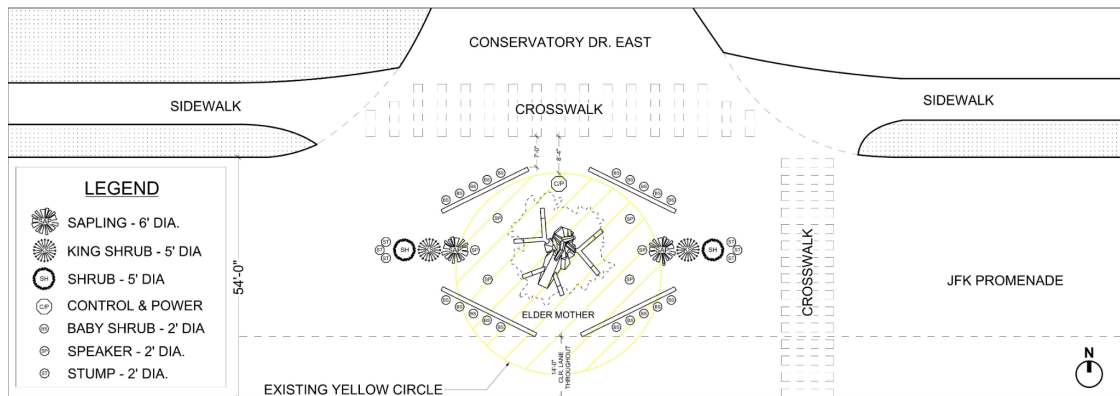
**Proposed Dates: December 7, 2023 - April 28, April 2024**

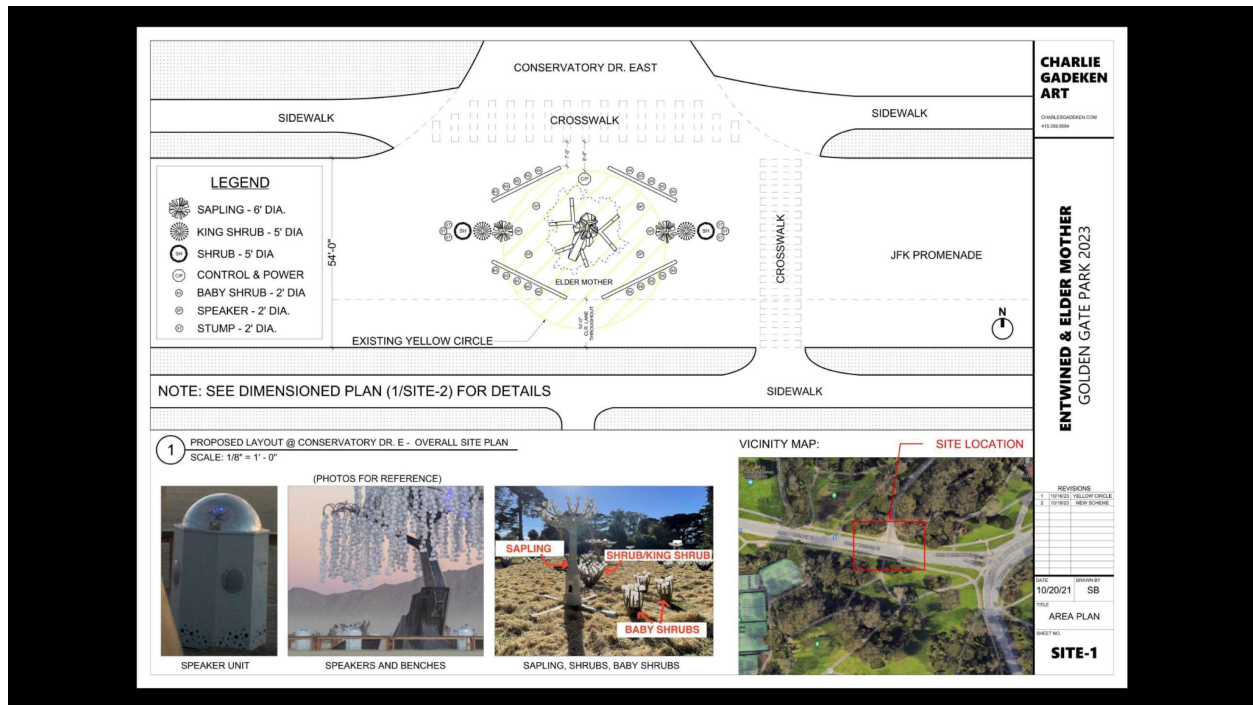
### Permit Area

The Permit Area includes the Installation Area in Golden Gate Park on John F Kennedy Drive, at the intersection of Conservatory Drive East. More details including staging, load in and load out schedule will be provided in the revocable permit to enter and use property (the "Permit"), dated as of TBD by and between SFPA, as permittee, and the City and County of San Francisco, acting by and through its Recreation and Parks Department ("Owner") as owner.

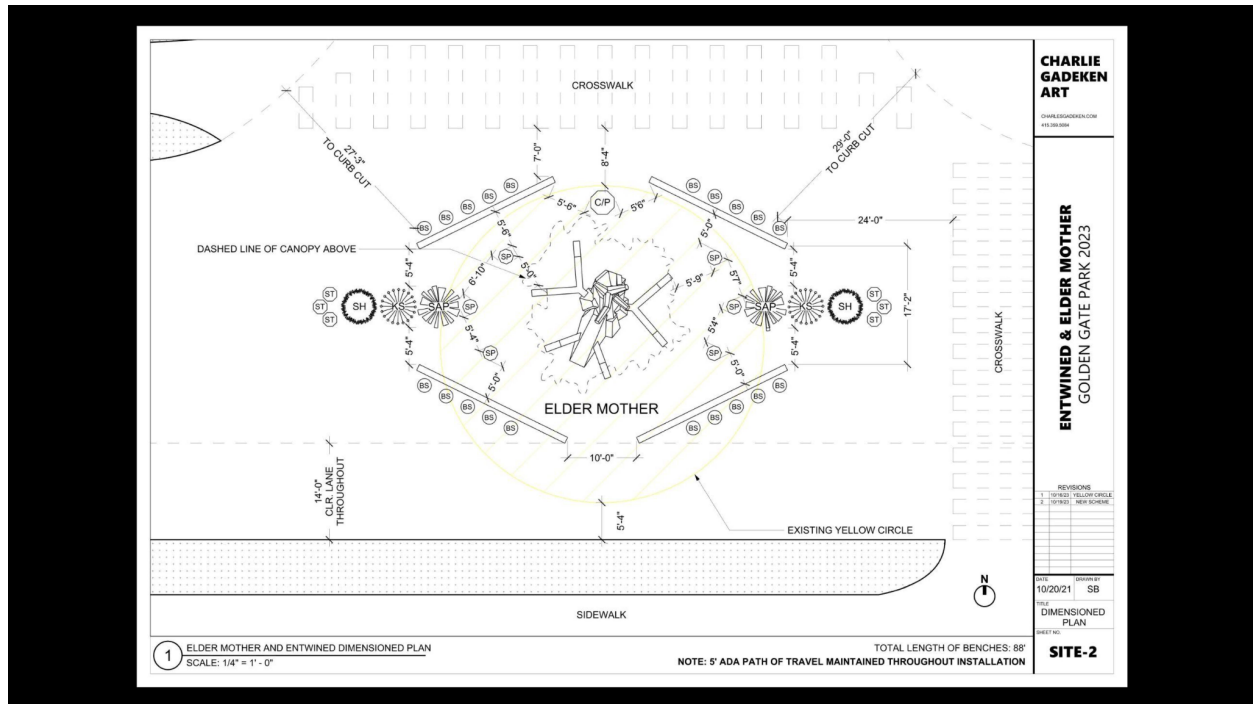
The installation must give 7 feet of clearance from the crosswalk on the North side and a 14-foot clearance for a fire lane and shuttle encroachment on the South side.

### Installation Area and layout (JFK Drive) approved by SFPA and RPD







**ADA plan - Diagram shows 5+ feet between all objects in the installation**

## Elder Mother

The main aspect of our installation this year, Elder Mother, is a magic, monumental, awe-inspiring, shade-bearing tree that moves in the wind and speaks through the language of light and color. The 30-ft metal sculpted tree carries a 25-ft canopy offering a place for animals to gather day and night with ever-changing, interactive illumination of endless color and delight.

Elder Mother is based on a Hans Christian Anderson fairy tale called "The Elder-Tree Mother". In the story, a bed-ridden child hears stories from a mystical woman in a magical tree. Our sculpture emulates this experience by telling stories to its visitors. We've collected over 26 hours of different folk lore, fairy tales, and personal anecdotes across 24 different languages to play them on a loop around the tree. Visitors can come sit, witness the lights, and become immersed in whatever tale is playing at the moment.

The octagonal design of the speakers is carefully chosen to align with the overall aesthetic of the installation. This design language provides a harmonious and coherent visual experience for visitors. The octagonal shape not only complements the other elements but also adds a unique touch that resonates with the theme of mystique and enchantment associated with the Elder Mother.

The square cutouts along the base of the speakers are a deliberate design choice that reinforces their relationship with the cube lights present throughout the installation. This design element creates a visual connection and sense of unity within the artwork, ensuring that the speakers blend seamlessly with the rest of the piece.

The mirrored domes atop the speakers serve a dual purpose. Firstly, they offer a fresh perspective for viewing the Elder Mother, enhancing the immersive experience. Secondly, they provide a solution for accessibility, allowing individuals who may not be able to look up to still enjoy the captivating light displays in person. These mirrored domes add both functionality and aesthetic appeal to the installation.

The forthcoming power and control unit, which is currently in the design phase, will maintain a strong visual relationship with Elder Mother and the surrounding pieces. This unit is essential for housing interactive elements and serves as a central hub for visitors to engage with the artwork. Its design will align with the square cutouts seen in other components, ensuring a cohesive look and feel throughout the installation.

The inclusion of RFID tags for visitor interaction is a unique and engaging feature. Visitors can use these tags, similar to tap-to-pay technology, to influence the light patterns on the tree. This adds an extra layer of interactivity and personalization to the experience, enhancing the connection between the artwork and its audience.

### **Structure**

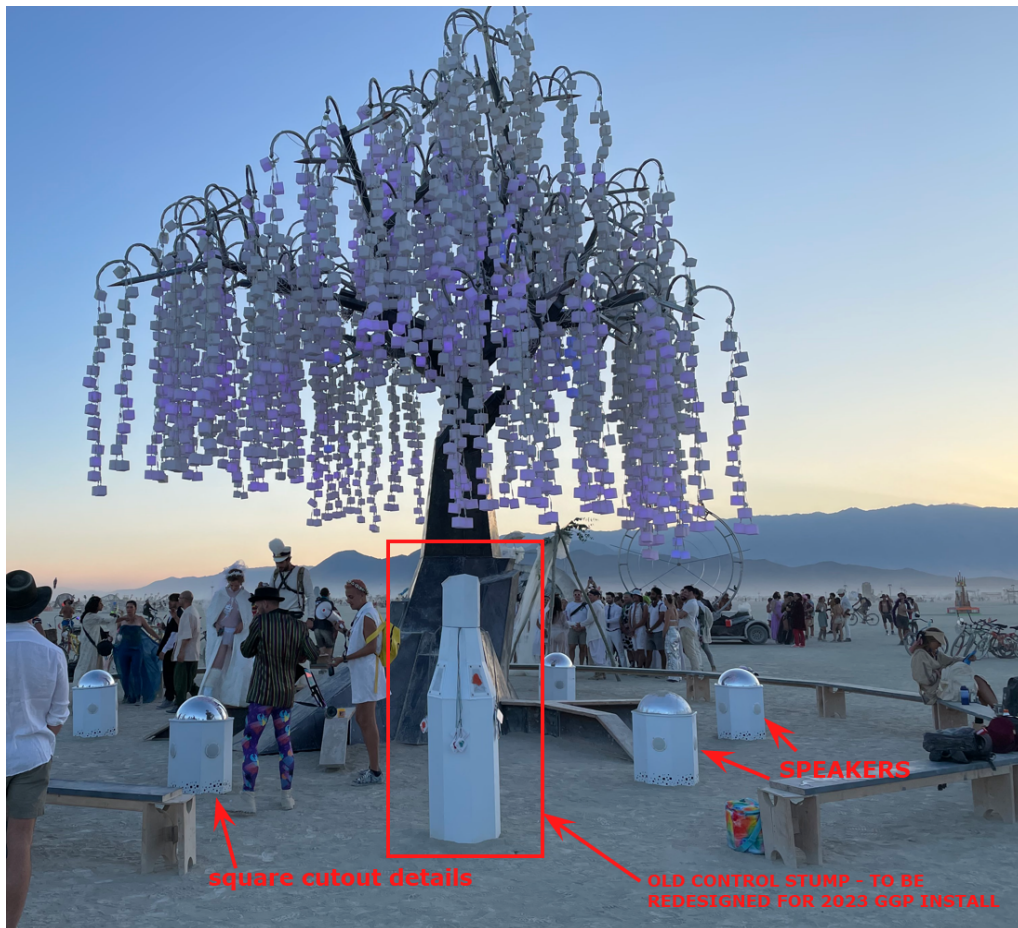
The sculpture is made from mild steel, steel tubes, plastic LED cubes, and magic. The trunk is a solid, low-poly geometric sculpture created from large, flat steel panels. Each light cube contains six individually addressable LEDs. The structural base will be integrated into the tree's trunk and body, seamlessly rising from the ground/installation site.

### **Interactivity**

Elder Mother incorporates four unique 'reader' locations on the tree 'leaves', where attendees can control the tree's lighting patterns from a few seconds to a minute. The interactivity of the sculptures has been a favored feature of Entwined in the past years.

### **Photos**

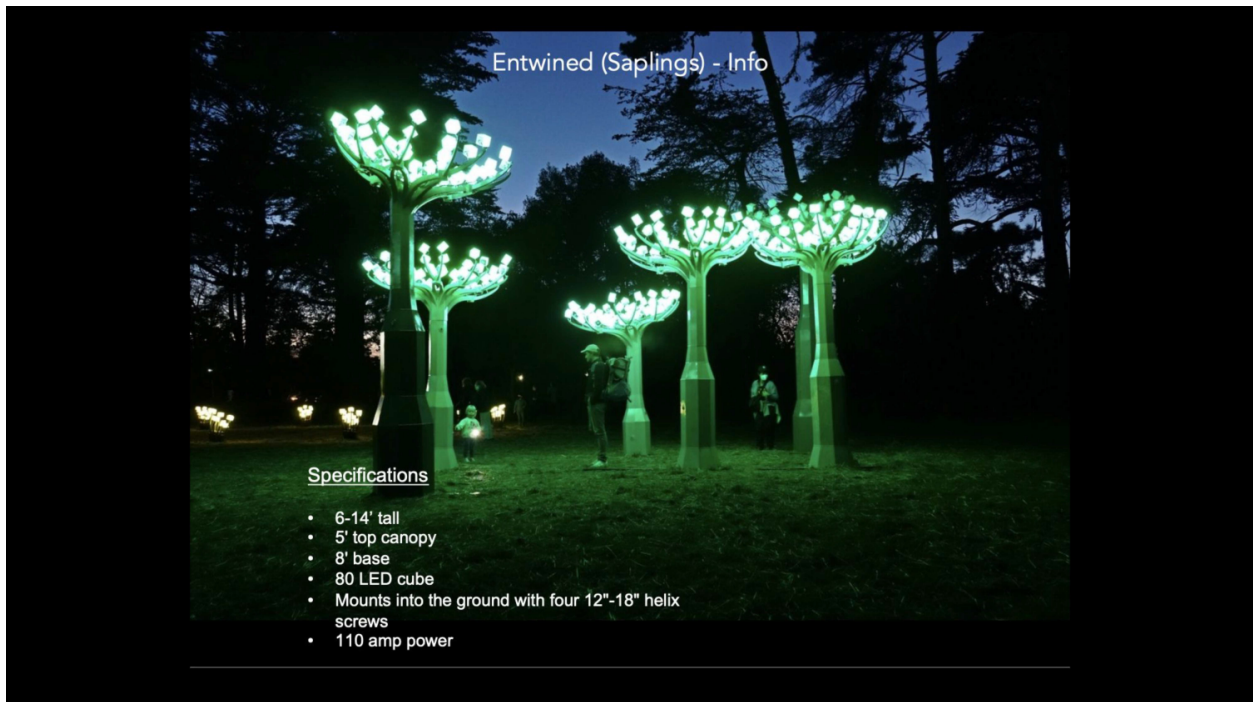


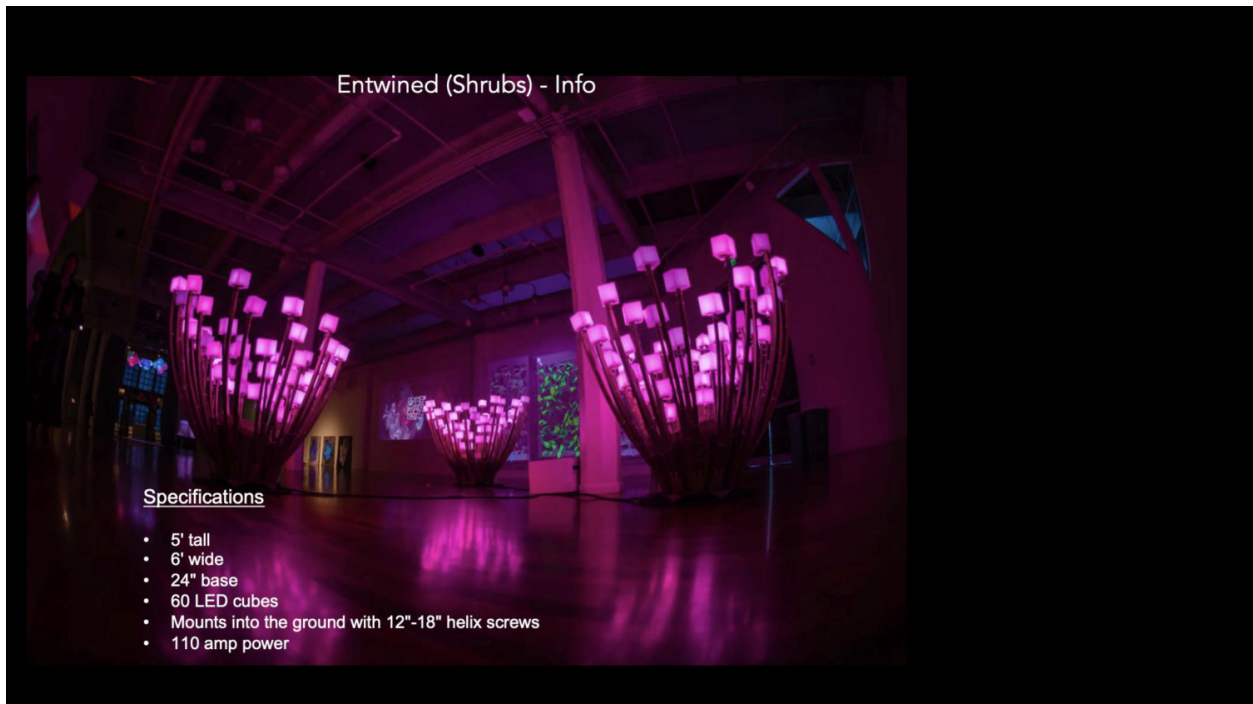






## Other Entwined Flora





## Materials and Maintenance

### Material List

The ENTWINED MEADOW is created from:

- Mild steel sheet metal, tubing, and rod sculptures, galvanized and painted with hammered copper quality paint and anti-graffiti clear finish
- 3700 white diffusion cubes of molded plastic
- 3700 individually addressable RGB LEDs
- 6 Speaker Units & Mirror Domes
- One Computer
- One wifi hotspot and webcam
- Marine-grade electrical wire
- 88' total of wood benches
- 120' of low-profile metal cable crossovers

### Maintenance

**Entwined Meadow** is constructed with durable, UV- and weather-resistant materials in consideration of long-term public installation. It is built to withstand public showing with quality materials that can stand the rigors of public art. These preventative measures include:

- a. High-quality paints and anti-graffiti finish for easy cleaning
- b. Wind- and waterproof wiring and electronics

The LEDs and physical structure are guaranteed for the length of the installation. As such, Charles Gadeken will provide:

1. Quality documentation of all systems.
2. Installation of a portable wifi system for remote electronic monitoring and servicing.
3. Daily remote human monitoring. Remote access to the computer controls will allow prompt LED adjustments from offsite.
4. Weekly onsite human monitoring.
5. Monthly onsite system checks.
6. Strong volunteer organization of people who are willing to spend time checking in on the art.
7. Any graffiti or physical damage will be resolved within 48 hours notice of discovery (either found by Charles Gadeken, volunteer monitors, or RecPark employees)

## Funding

### OEWD Grant RFP 225B

OEWD has awarded us a grant for the following endeavors:

- Present 14 weeks of an immersive art installation by artist Charles Gadeken in Golden Gate Park for the 2023-24 holiday season.
- Work with a local artist to illuminate a new area of Golden Gate Park for 14 weeks.
- Present twice-weekly, free, family-friendly, arts-based programs, to coincide with and



complement the art installations, in Golden Gate Park.

- Attract 80,000-100,000 attendees.
- Drive new business and bring more foot traffic to local businesses near Golden Gate Park.