



SF PUBLIC HEALTH LABORATORY: PROTECTING THE HEALTH OF SAN FRANCISCANS.



Godfred Masinde, PhD, MBA, HCLD(ABB)
Public Health Laboratory Director

Health Commission Updates
Tuesday, October 17, 2023



POPULATION HEALTH DIVISION
SAN FRANCISCO DEPARTMENT OF PUBLIC HEALTH

Outline

Public Health Lab Overview

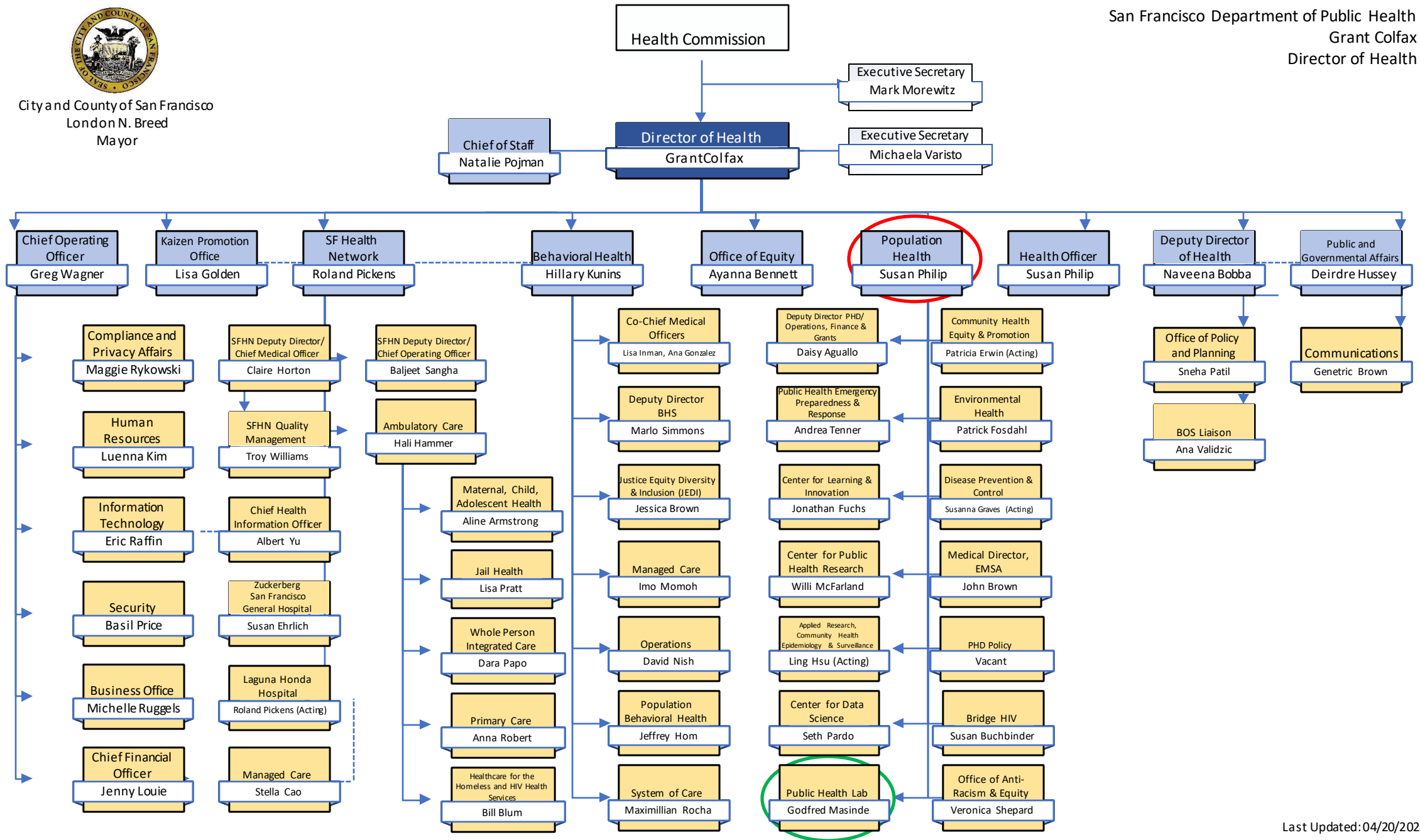
**Quality Improvements & Workforce
Development**

Future of the Public Health Lab



City and County of San Francisco
London N. Breed
Mayor

San Francisco Department of Public Health
Grant Colfax
Director of Health



Population Health Division (PHD)

Organizational Chart – Executive and Branches

Revised September 2023



Grant Colfax
Director of Health

Susan Philip
Health Officer
PHD Director &
SF Health Officer

Shonika Kumar
(1840)

(2233 Vacant)
Deputy Health Officer
Research, Learning and
Development

Bridge HIV
Susan Buchbinder (2233)

**Center for Public Health
Research (CPHR)**
Willi McFarland (2232)

**Center for Learning and
Innovation (CLI)**
Jonathan Fuchs (2232)

**Information & Guidance
(I&G)**
Vacant (0922)

Daisy Aguallo
Deputy Director of Operations,
People & Infrastructure (0941)

**Policy, Contracts & Government
Affairs**
Eduardo Sida (acting)
Vacant (0923)

Performance Improvement
Vacant (2593)
Radha Rai (acting)

Central Management
Charles Fann (0931)

Operations
Vacant (0931)

Vital Records
Erika Campos (1823)

DPH/PHD Finance
Maggie Han
(1823)

Compliance
Joseph Gorndt
(1824)

(0943 Vacant)
Deputy Director Surveillance, Data
and Analytics

**Applied Research
Community Health Epi &
Surveillance (ARCHES)**
Vacant (0931)
AJ Jones (HIV)
Melissa Sanchez
(TB/CD/Viral Hep)
Trang Nguyen (STD)

**Center for Data
Science (CDS)**
Seth Pardo (0922)

(2233 Vacant)
Deputy Health
Officer, Public Health
Services

**Disease Prevention &
Control (DPC)**
Susannah Graves (acting)
(2233)

**Public Health Lab Services
(PHL)**
Godfred Masinde (0932)

Environmental Health (EH)
Patrick Fosdahl (0953)

**Public Health Emergency
Preparedness and
Response Branch (PHEPR)**
Andi Tenner (2233)

**Emergency Medical
Services Agency (EMSA)**
Medical Director
John Brown (2233)

Asa King
Deputy Director
Community Health (0953)

**Office of Anti-Racism &
Equity (OARE)**
Veronica Shephard (0922)

**Community Health and Equity
Promotion (CHEP)** (0931)
Nikole Trainor (Admin)
Christina Goette (Wellness)
Nyisha Underwood
(Sexual/Drug use)

**Equity and Community
Engagement (ECE)**
Isela Ford (acting) (0922)

Color Key

PHD Executive Deputies

PHD Branches



PHL

- First approved as a PHL in January 1953.
- Served the City for over 70 years.
- Located on 4th Floor
- 29 FTEs divided into Technical and operational FTEs.
- Part of the backbone of national Laboratory network to respond to novel strains of disease, foodborne outbreaks and other health emergencies.

Filmed on 4th Floor:

Invasion of Body Snatchers: When Strange seeds drift to earth from space, mysterious pods begin to grow and invade San Francisco, replicating the city's residents one body at a time.

The Link: <http://www.imdb.com/title/tt0077745/>

Role of LPHLs

Local PHLs generate much of the data used to make decisions and plans, evaluate programs, and provide local testing services.

Local PHL data are used by policy makers to assess the community's health status, identify health risks, and support public health program activities and decisions.

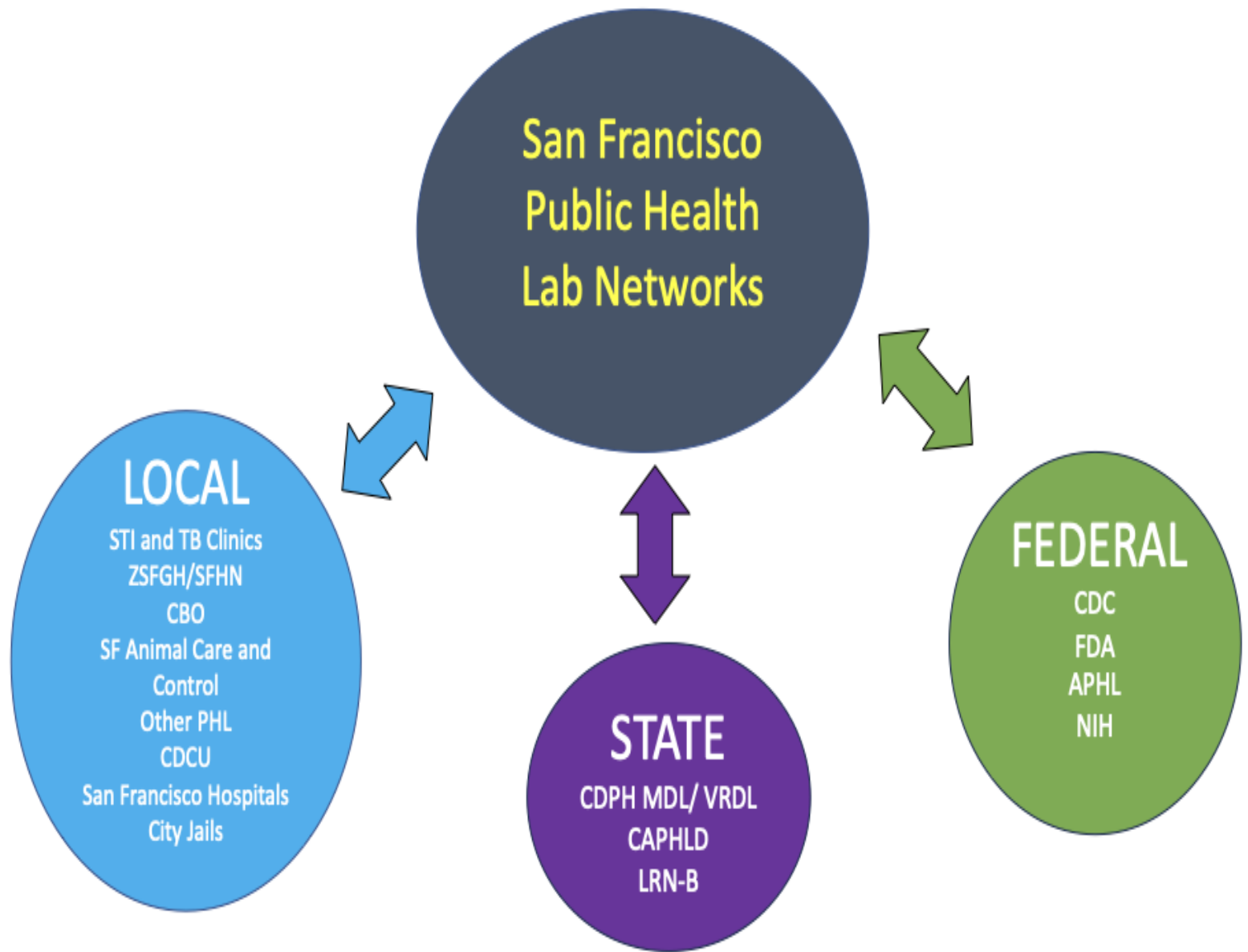
Clinical Laboratories vs Public Health Laboratories

Clinical Laboratories — Individual Health	Public Health Laboratories — Population Health
<ul style="list-style-type: none">• Diagnostic testing• Some reference testing• Medical management	<ul style="list-style-type: none">• Diagnostic testing• Reference testing• Surveillance and monitoring• Emergency response support• Applied research• Workforce development and training

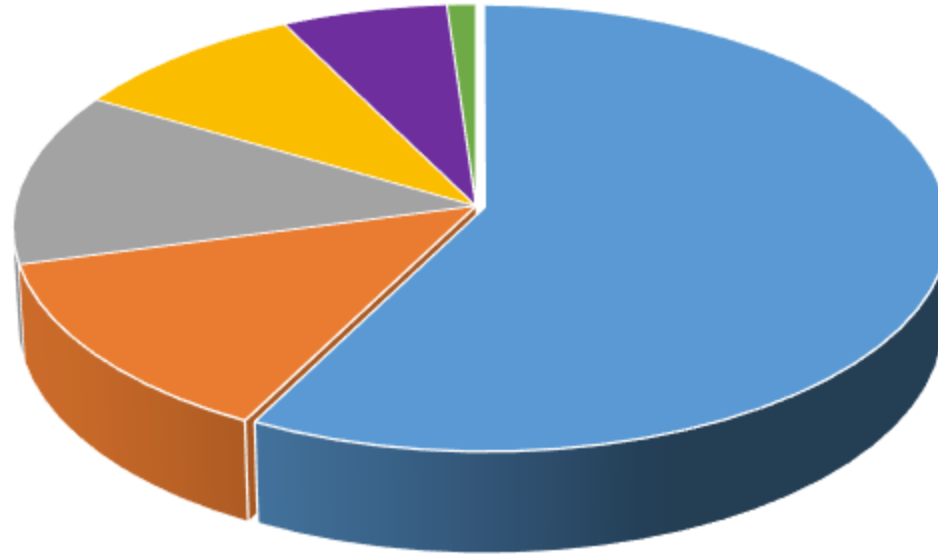
PHL's Mission within DPH

The purpose of the Public Health Laboratory is to provide accurate, timely and low-cost laboratory testing to support the diagnosis and prevention of communicable and non-communicable diseases.

PHL's Networks



Tests performed by PHL in 2022



■ STI ■ COVID ■ RPR ■ HIV ■ TB ■ MPOX

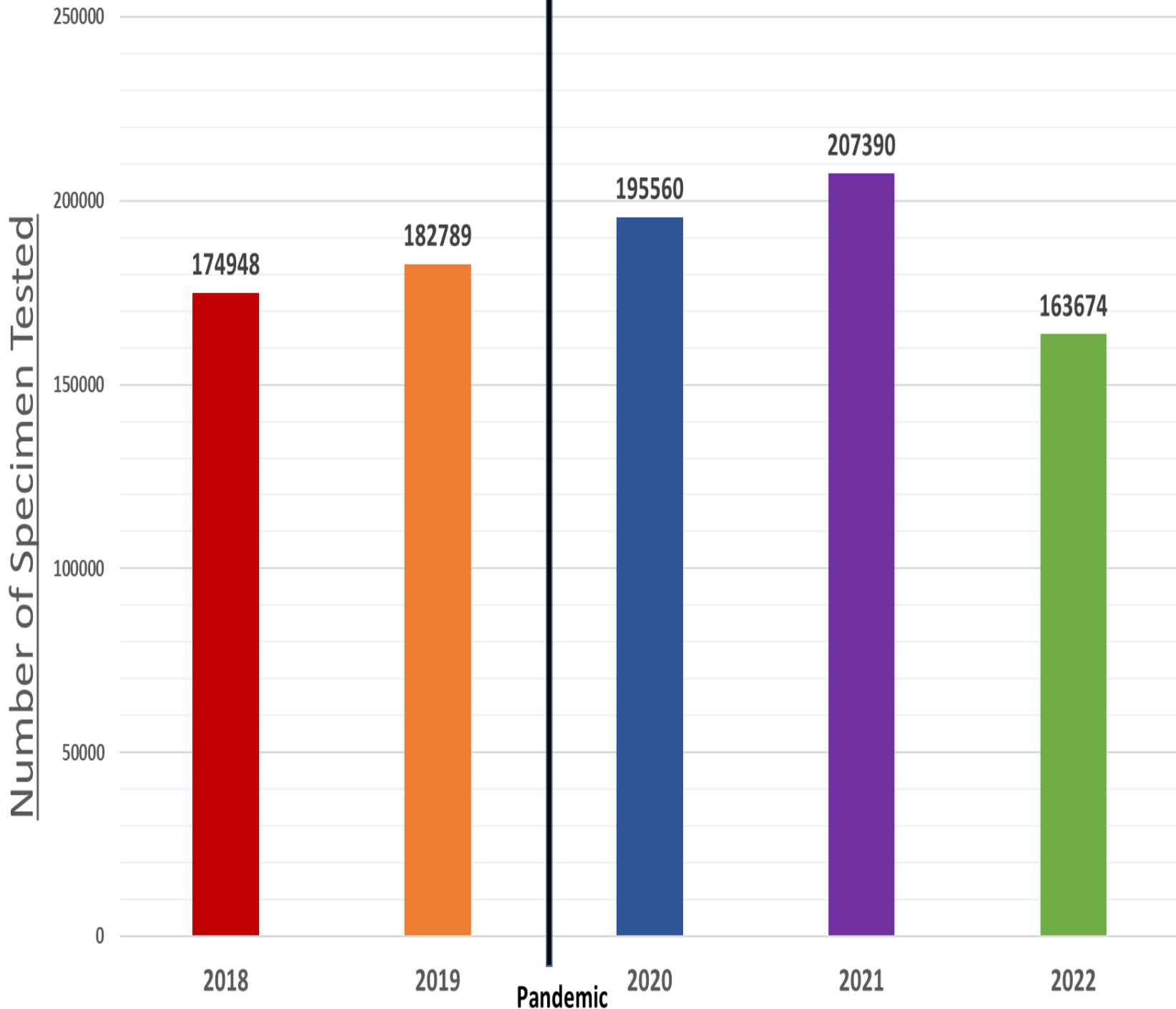


Abbott Alinity



Hologic Panther

Total Test Volumes



SFPHL is a Recognized Center of Excellence

First LPHL to
develop a High
throughput
Mpox test in
the Country

First LPHL to
use automated
RPR (Syphilis)
testing system

First lab in CA
to use RNA
pooling to
detect Acute
HIV.

First Lab in the
country to use
GeneXpert for
TB in patients

First lab to
perform
Lymphogranulo
ma venereum
(LGV) by
molecular
methods

Serves as a
reference lab
for all clinical
laboratories in
San Francisco

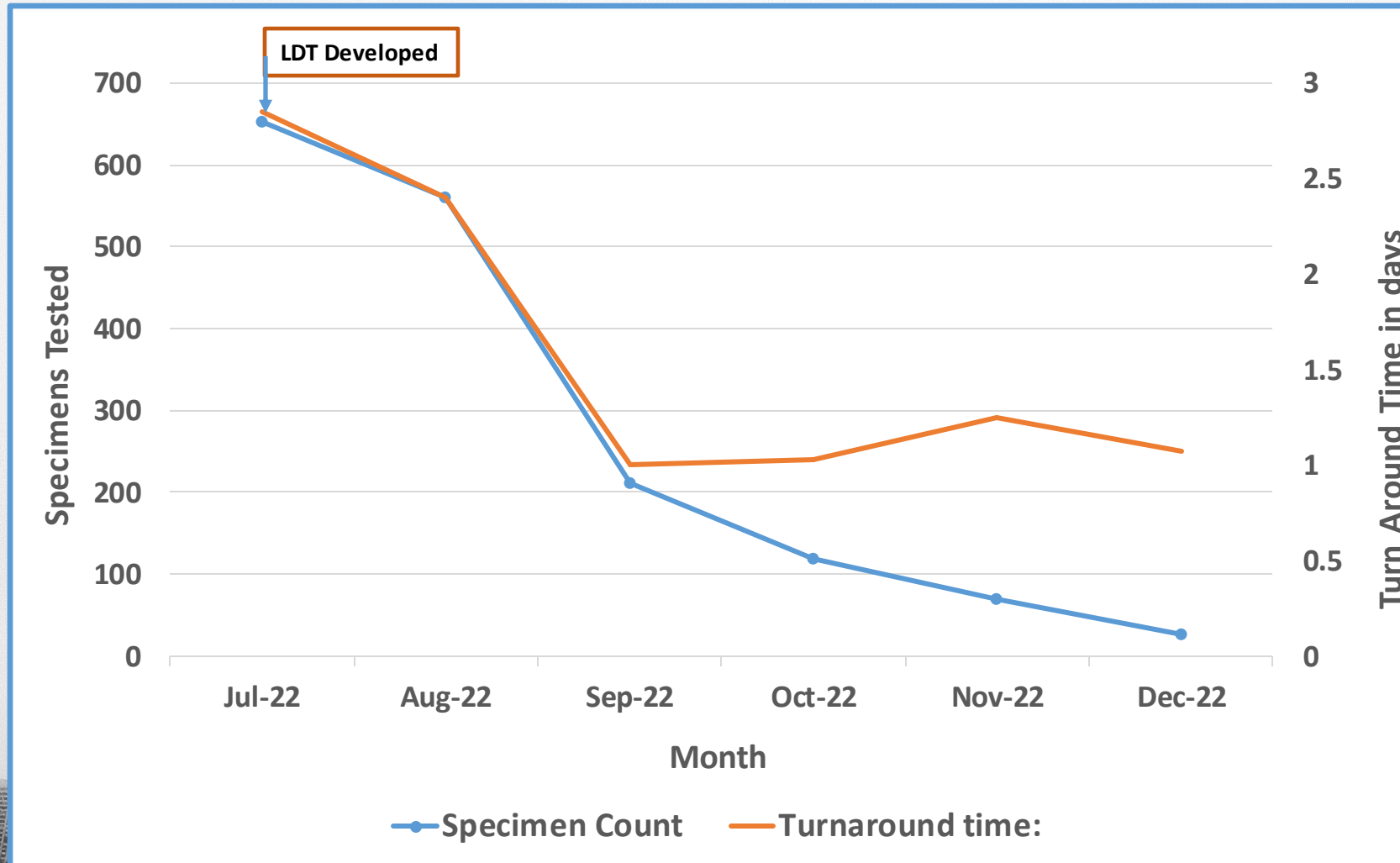
First PHL test
Chlamydia (CT)
and Gonorrhea
(GC) on
pharyngeal and
rectal specimens



PHL Promotes Excellence Through:

- 1) Quality Improvement
- 2) Workforce Development

Quality Improvements: Validation of Mpox for high throughput testing.



POPULATION HEALTH DIVISION
SAN FRANCISCO DEPARTMENT OF PUBLIC HEALTH

Workforce Development-Lab Director/PHM Training.



Lina Castro, MPH
DrPH student



Melvina Zeno,
Health Prog. Cord III

Syreeta Steel, PhD
Ejovwoke Dosunmu, PhD
Stephanie Trammell, DrPH candidate





PHL Evolves by Bringing on New Technologies to Improve Testing



POPULATION HEALTH DIVISION
SAN FRANCISCO DEPARTMENT OF PUBLIC HEALTH

Testing closer to the Patient & New Tests

BioFire

Slide 17

- Two new CLIA certified Labs introduced at City Clinic and Jail Health as PHL.
- BioFire a new instrument for testing Gastrointestinal and Respiratory Panels
- Whole genome sequencing-Clear Labs- Sequencing Covid-19, Salmonella, Shigella, E. coli and drug resistant GC and TB.
- Roche Cobas 5800-automation of LDTs-LGV, Malaria, Rabies, Measles/Mumps etc.
- DiaSorin Liaison XL-Ab tests: HIV, HCV, HSV,M &M, QFT

GeneXpert



Cobas 5800



Liaison XL



Clear Labs



POPULATION HEALTH DIVISION
SAN FRANCISCO DEPARTMENT OF PUBLIC HEALTH

Future Home
of PHL in
Building 5,
ZSFG planned
for 2024



