

BUCHANAN STREET MALL

Memory Walk



Civic Design Review | September 2023

Prepared for:
San Francisco Arts Commission Civic Design Review

Prepared by:
San Francisco Public Works



Services of the San Francisco
Public Utilities Commission



Civic Design Review | September 2023

PROJECT TEAM

Lauren Dietrich Chavez, Project Manager
Allison McCarthy, Park Service Area Manager
Michelle Pallavicini, Park Service Area Manager
San Francisco Recreation and Parks Department

Sarah Bloom
Willis Logsdon
Ying-Chik Lee
Ann-Ariel Vecchio
San Francisco Public Utilities Commission

Incommon
Lotus Water
Green Infrastructure Consultant

Brett Desmarais, Landscape Architect
Winnie Chang, Landscape Architectural Associate
Danielle Chan, Landscape Design Assistant
Alexis Ng, Electrical Engineer
Lesley Wong, Hydraulic Engineer
Cassandra Hom, Hydraulic Engineer
Jason Tjalsma, Structural Engineer
San Francisco Public Works

AGS, Inc.
Consulting Geotechnical Investigation



Šárka Volejníková
Amie Patel
Ariella Levitch
The Trust for Public Land

Sophie Constantinou
Tamara Walker
Sadiq Norris
Citizen Film

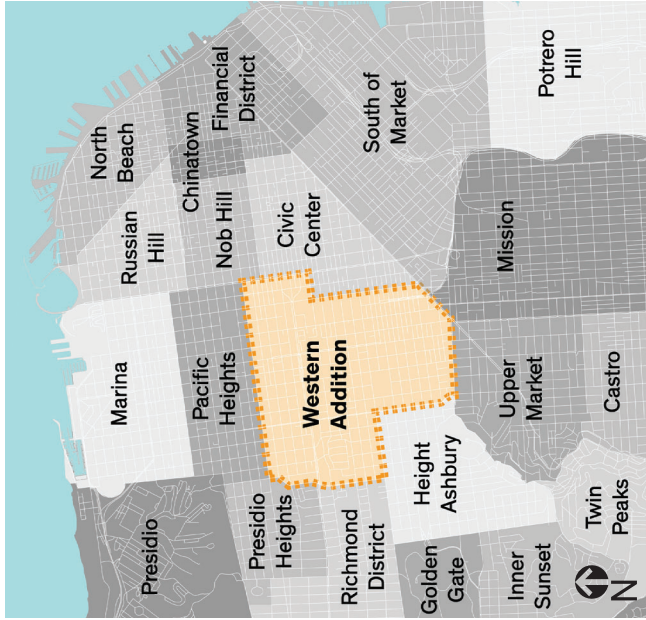
Tyrone Mullins
Green Streets



BUCHANAN MALL

Civic Design Review | September 2023

PROJECT LOCATION



Western Addition, San Francisco

Located roughly in the center of San Francisco, the Western Addition developed as a Victorian streetcar suburb. It survived the 1906 San Francisco earthquake with its *Victorian-style buildings* largely intact. Today, the term Western Addition is roughly synonymous with the Fillmore and Cathedral Hill neighborhoods.



The Fillmore, "Harlem of the West"

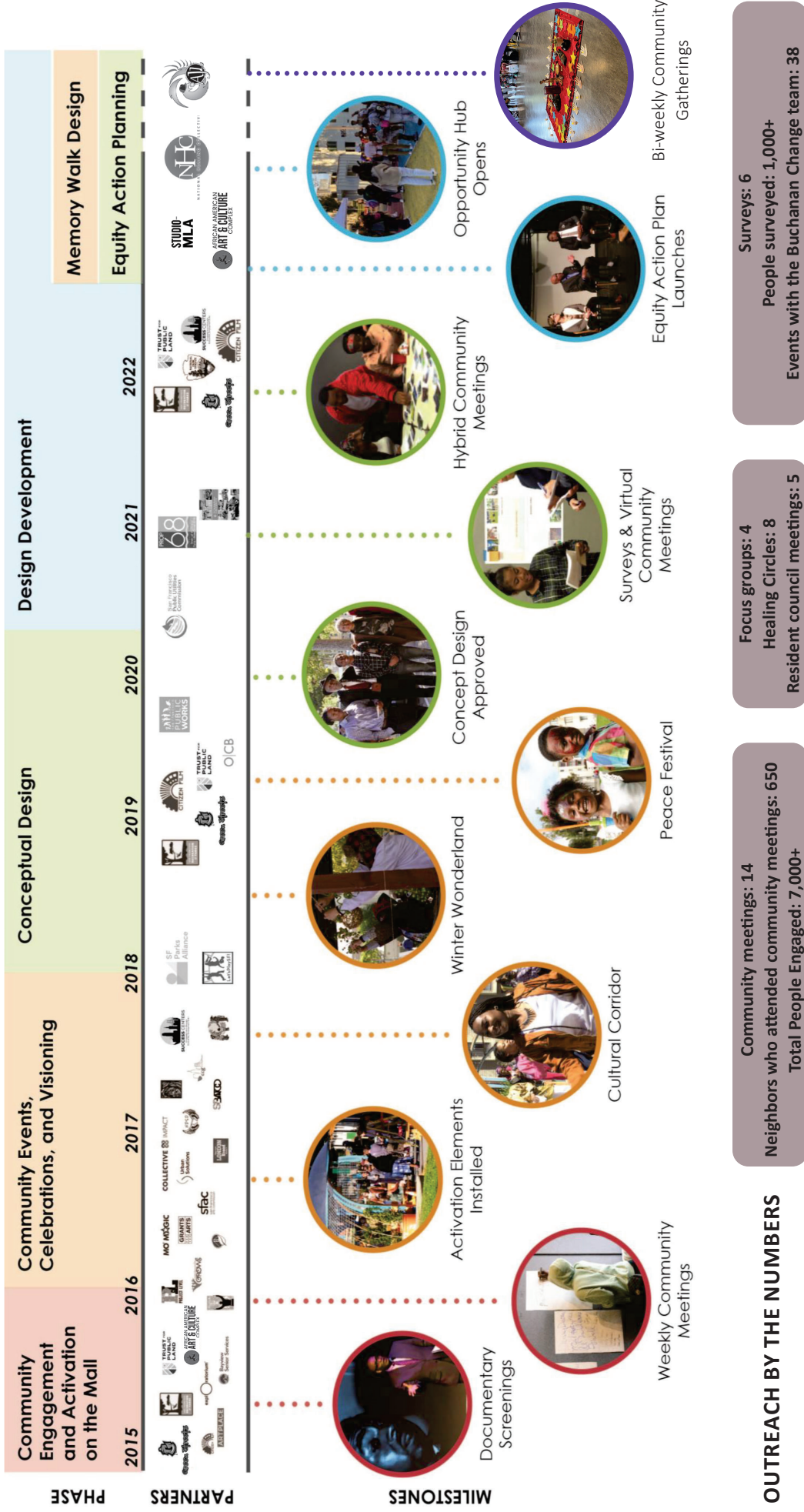
At the heart of the Western Addition lies the Fillmore District, once known for its flourishing jazz scene, dubbed the "Harlem of the West." Today, the district is locally known as "Fillmoe", "The Mo" or MOE, which means "Money Over Everything."



Buchanan Street Mall

Two blocks east of Fillmore Street runs Buchanan Street, five blocks of which was turned into a pedestrian boulevard, or Mall, in 1975. By the mid 1980s, the neighborhood faced violence and a drug epidemic, and those issues spilled over into the park creating an atmosphere of fear. The park had been avoided by many residents until recently.

COMMUNITY ENGAGEMENT



TRUST FOR PUBLIC LAND

PUBLIC WORKS

GREEN STREETS

Water Power Sewer

BUCHANAN MALL

Civic Design Review | September 2023

CONCEPT DESIGN

APPROVED BY RECREATION AND PARK COMMISSION, APRIL 2020

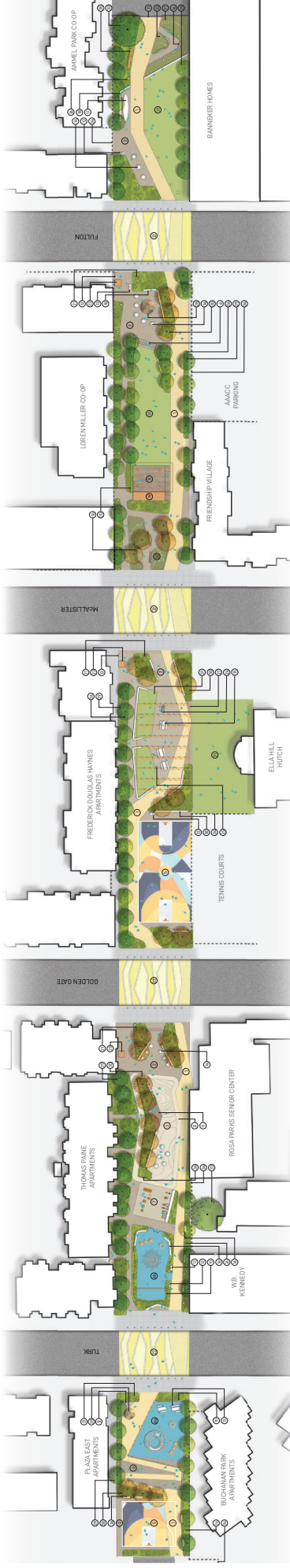
ACTIVE RECREATION

ALL-AGES PLAY

BASKETBALL & BBQ

ART & ENTERTAINMENT

GARDEN & GATHER



source: 2020 Buchanan Street Mall Concept Plan by OCB

Project Goals:

1. Safety, Lighting & Beautification
2. Connect Blocks & Unify the Community
3. Tell the Story of the Community & the Neighborhood
4. Social Interaction & Multi-Generational Recreation
5. Skills Training & Jobs Creation
6. Stormwater Management & Urban Greening

Key Features:

- Memory Walk
- Gardens
- Lighting & Improved Safety
- Micro-Enterprise Kiosk
- Gateways



APPROVED SCHEMATIC DESIGN



Eddy St. to Turk St.
May 2022



Golden Gate Ave. to McAllister St.
March 2023



Turk St. to Golden Gate Ave.
September 2021



McAllister St. to Fulton St.
May 2022



Fulton St. to Grove St.
March 2023



Civic Design Review | September 2023

COMMUNITY VISIONING: THEMATIC ELEMENTS & UNIFYING MOTIFS

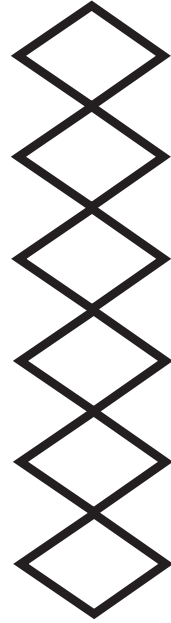
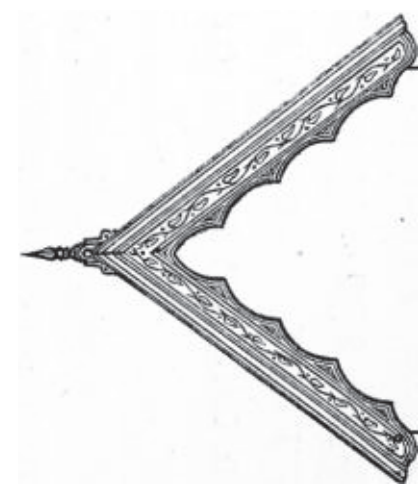
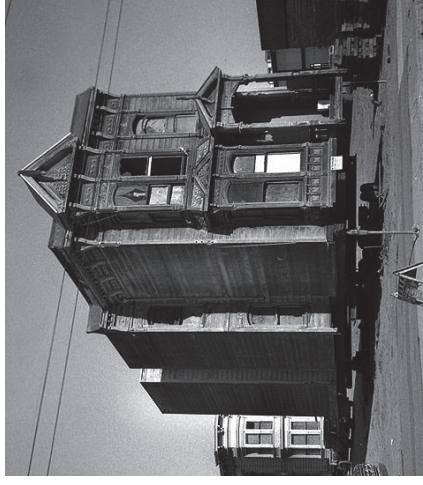
Part I: 2020

- The Office of Cheryl Barton
- West African design: Kente and Adinkra symbolism
- Celebration and strength

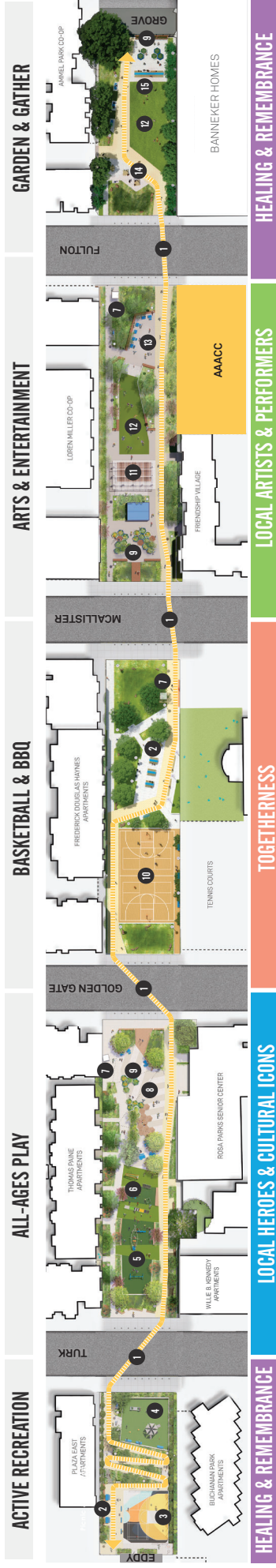


Part II: 2023

- Studio MLA
- Home: Victorian architecture and the legacy of redevelopment in the Western Addition
- Cultural diversity of the neighborhood, woven together over time

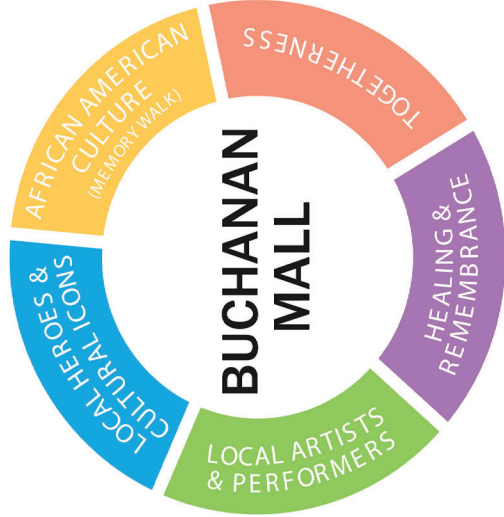


MEMORY WALK THEMATIC FRAMEWORK



THE MEMORY WALK

The Memory Walk is envisioned as a well-lit and accessible walkway that weaves through Buchanan Street Mall, connecting all the blocks, creating a safe passage and an Afrocentric design. The Memory Walk will include, monumental gateways, special paving, and interpretive elements, and will provide a platform for future community-led art & storytelling opportunities.

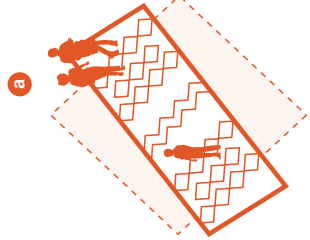


KEY ELEMENTS

- 1. Memory Walk
- 2. Picnic & BBQ Area
- 3. Multi-Sport Court
- 4. Young Kids Play Area
- 5. Big Kids Play Area
- 6. Adult & Senior Exercise Equipment
- 7. Micro-Enterprise Kiosk
- 8. Flexible Plaza
- 9. Communal Gardens
- 10. Full Basketball Court
- 11. Stage
- 12. Multi-Use Lawn
- 13. Art Plaza
- 14. Picnic Area
- 15. Community Gathering Area

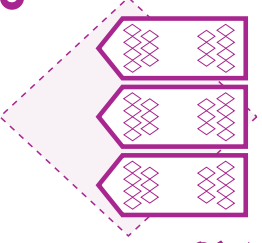


SITE PLAN: MEMORY WALK ELEMENTS



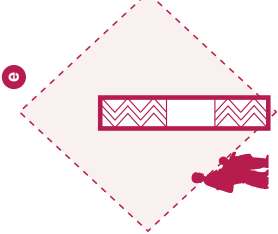
Paving

- Unit paver patterns
- Decorative metal inlay



Fences

- Waterjet patterns
- Curated art + interpretation



Columns

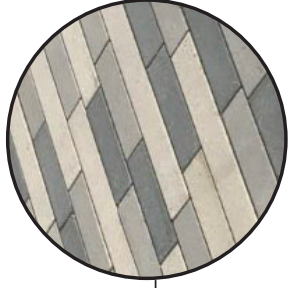
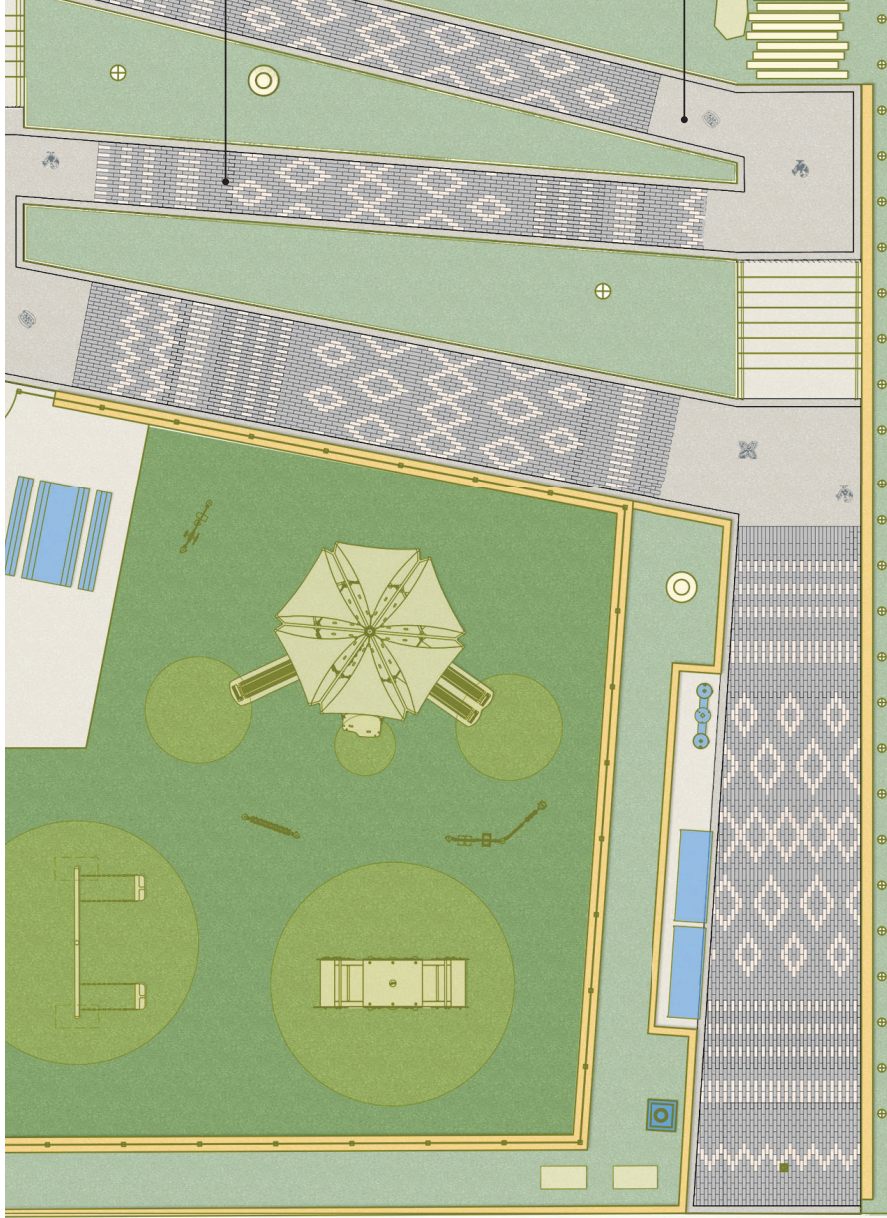
- Waterjet patterns
- Curated art + interpretation

Potential Artist Opportunities:

- Murals + Multimedia** **b**
- Large Sculpture** **d**
- Small Sculpture** **f**

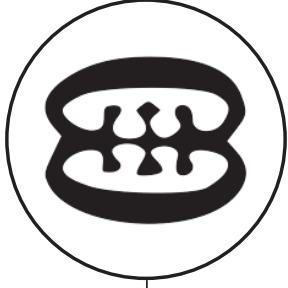


MEMORY WALK PAVING



Unit Pavers

- 3x9"
- H-20 Vehicular Loading
- Warm grey tones



Nickel Bronze Inlay

- ~12x12"
- Symbol selection by the community
- Set flush in concrete

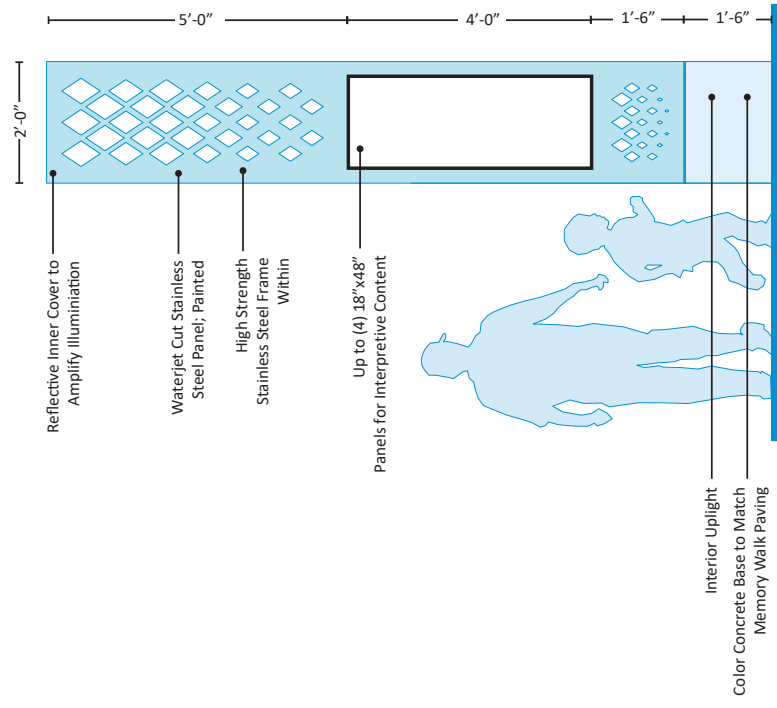


Color Concrete

- Warm grey
- Fine aggregate



COLUMN TYPICAL ELEVATION



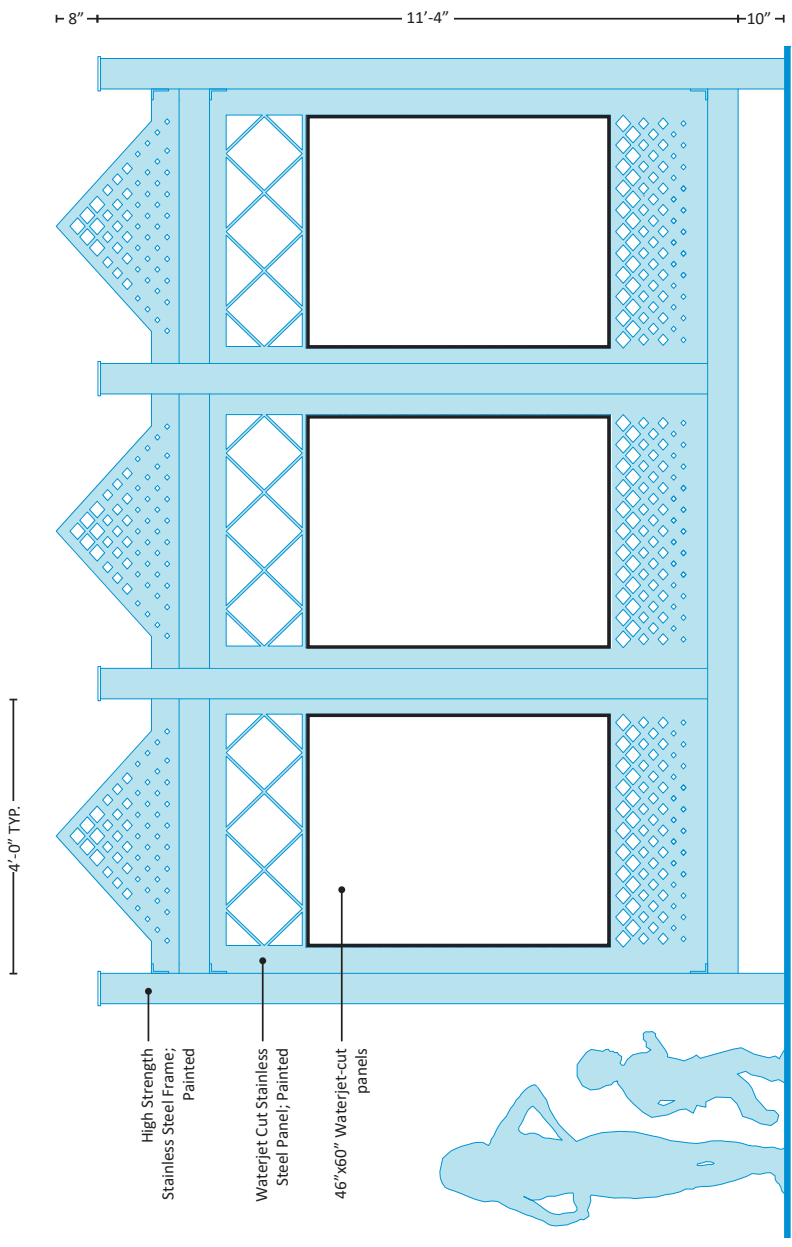
Potential for Interpretation or Art



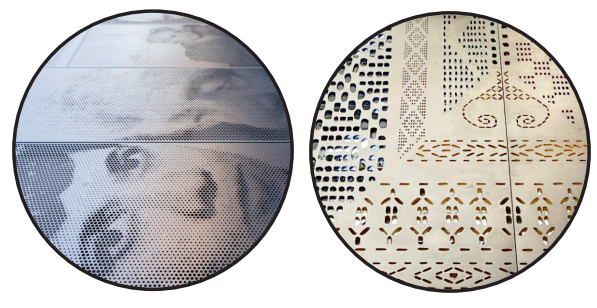
- Punched metal portraits
- Waterjet designs
- Signage and storytelling



FENCE TYPICAL ELEVATION



Potential for Interpretation or Art



- Punched metal portraits
- Pattern designs



PERSPECTIVE



Civic Design Review | September 2023

PERSPECTIVE



Services of the San Francisco
Public Utilities Commission



Civic Design Review | September 2023

FUTURE COMMUNITY-LED ART OPPORTUNITIES

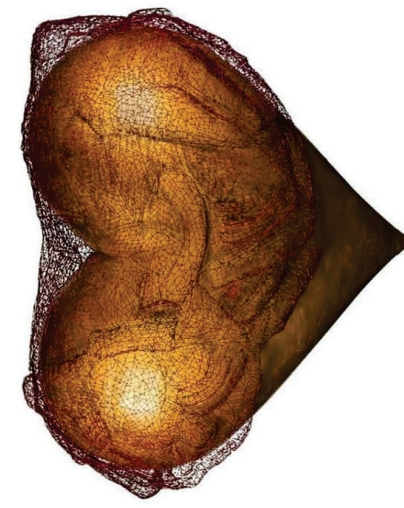
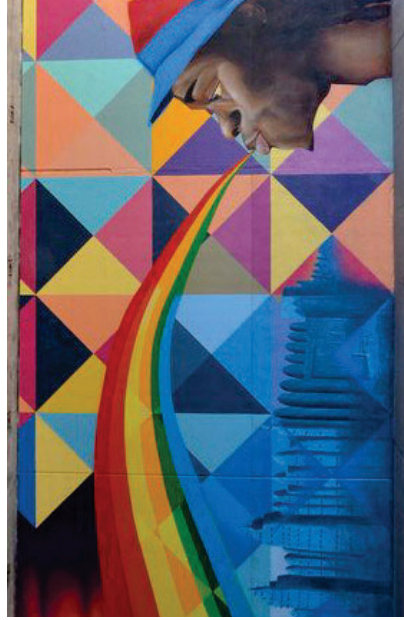
Murals



Multimedia



Sculpture



Services of the San Francisco Public Utilities Commission

FUTURE COMMUNITY-LED ART OPPORTUNITIES



Community
Curation +
Participation

Artist Mentorship

Artist Opportunities

