

Visual Arts Committee Meeting August 16, 2023

Explanatory Document for August 16, 2023 Meeting

JFK Promenade Temporary Art Program

The Recreation and Park Department has approved two temporary sculpture installations with a duration of one year each for the JFK Promenade Art Program in Golden Gate Park. The projects require approval from the Arts Commission. The attached photos shows the locations proposed for the works. Signed and stamped engineering drawings have been submitted to the Recreation and Park Department.

The first project is a text-based installation of metal letters spelling *NO DANCING* which has been created by the SF based artist collective Looking Up Arts. The work will be displayed at Burning Man this year prior to its future installation in Golden Gate Park, if approved by the Arts Commission. The installation is 18.5' tall and 115' wide. It has been engineered to withstand winds of 100 mph. It will be located next to a site entitled the Skating Place which is across from the JFK Promenade.

The second project entitled *Eat, Travel, Play and Care* is a series of four figurative sculptures that feature a dog and a rabbit depicting a man and a woman which have been created by Gille and Marc, artists from Australia. Two of the projects are fabricated entirely from bronze with dimensions of 85.4' x 78.7" x 47.2" and 86.6" x 70.9" x 47.2". The third sculpture features the dog and rabbit bronze figures riding a mirror-polished stainless steel whale sculpture and the fourth sculpture features dog and rabbit, executed in bronze, seated upon a mirror polished stainless steel inflatable flamingo.

Both projects will be maintained by Illuminate, the firm engaged by the Recreation and Park Department to produce and oversee the art program.

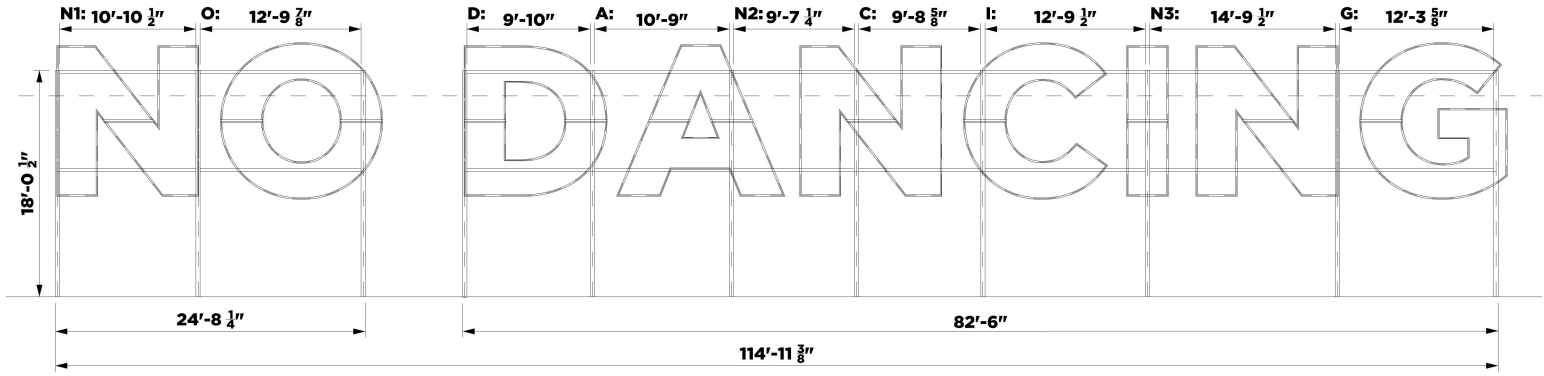
**NO DANCING**

● **Eat, Travel, Play and Care**



# MAIN STRUCTURE ELEMENTS

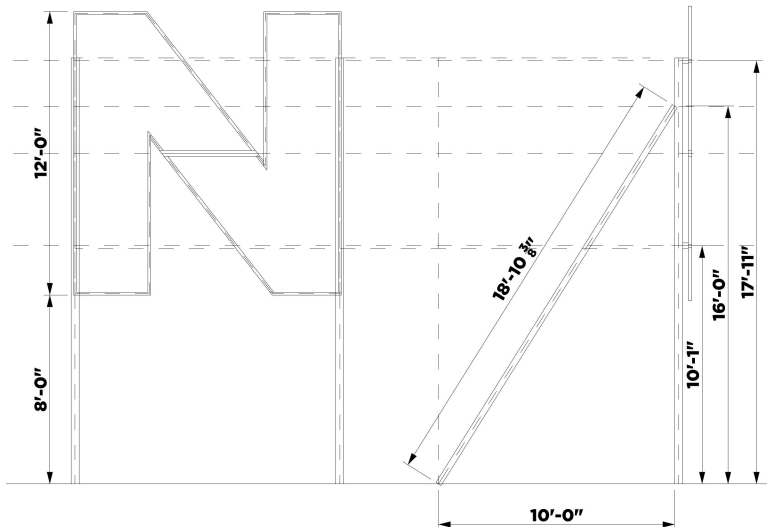
(DETAIL 1.0)



MEMBER NAME	MEMBER SIZE / GAUGE	LENGTH	QTY.	TOTAL LENGTH REQ.	STD. MANUFACTURER MEMBER LENGTH	EXPECTED 'SCRAP' DIMENSION	CUT DESIGNATION
POSTS	4 x 4 x 1/8	18' - 0 1/2"	11	198.451'			
<b>HORIZONTAL MEMBERS (GIRDER)</b>							
N1	3 x 3 x 1/8	10' - 10 1/2"	2	21.75'			
O	3 x 3 x 1/8	12' - 9 7/8"	2	25.644'			
D	3 x 3 x 1/8	9' - 10"	2	19.666'			
A	3 x 3 x 1/8	10' - 9"	2	21.5'			
N2	3 x 3 x 1/8	9' - 7 1/4"	2	19.5'			
C	3 x 3 x 1/8	9' - 8 5/8"	2	19.436'			
I	3 x 3 x 1/8	12' - 9 1/2"	2	25.582'			
N3	3 x 3 x 1/8	14' - 9 1/2"	2	29.582'			
G	3 x 3 x 1/8	12' - 3 5/8"	2	24.604'			
<b>DIAGONAL MEMBERS (SEE DETAIL 1.1)</b>							
BRACE	3 x 3 x 1/8	18' - 10 1/8"	11	207.73			

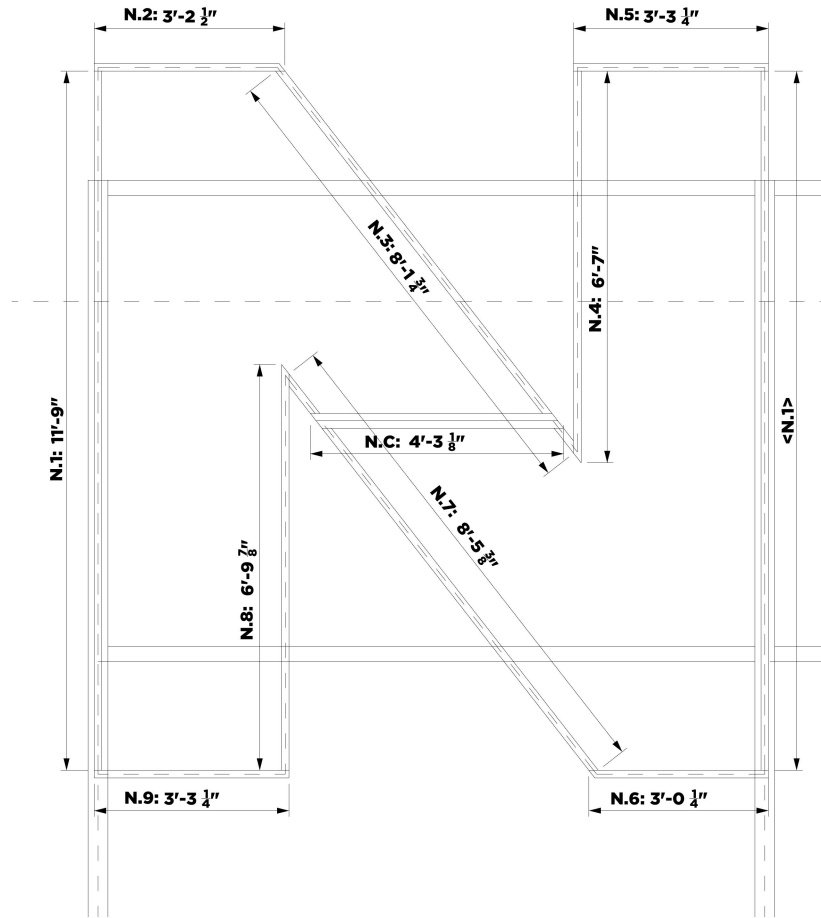
# LETTER ESTIMATES

(DETAIL 1.1)

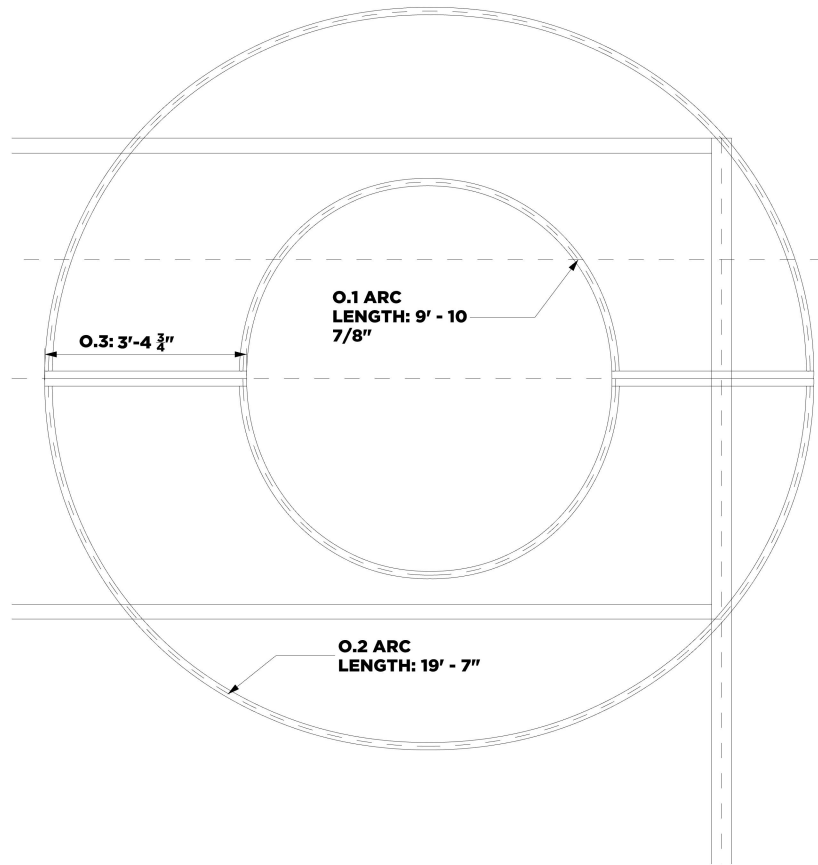


MEMBER NAME	MEMBER SIZE / GAUGE	EST. LENGTH NEEDED	NO. OF PIECES
<b>LETTERS</b>			
N1, N2, & N3	1.5 x 1.5 x 1/8	224.355'	36
O	1.5 x 1.5 x 1/8	72.558'	8
D	1.5 x 1.5 x 1/8	73.432'	15
A	1.5 x 1.5 x 1/8	69.429'	19
C	1.5 x 1.5 x 3/8 *	59.852'	8
I	1.5 x 1.5 x 1/8	36.372'	8
G	1.5 x 1.5 x 3/8 *	72.607	12

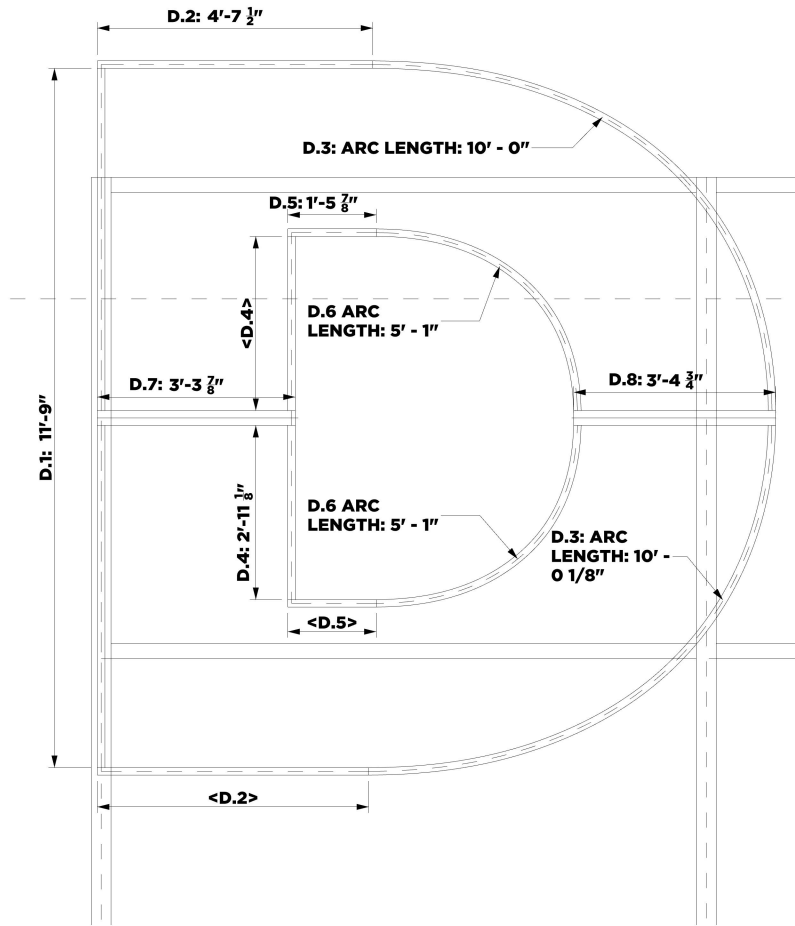
SEE LETTER DETAIL PAGES FOR ACCURATE BREAKDOWN.



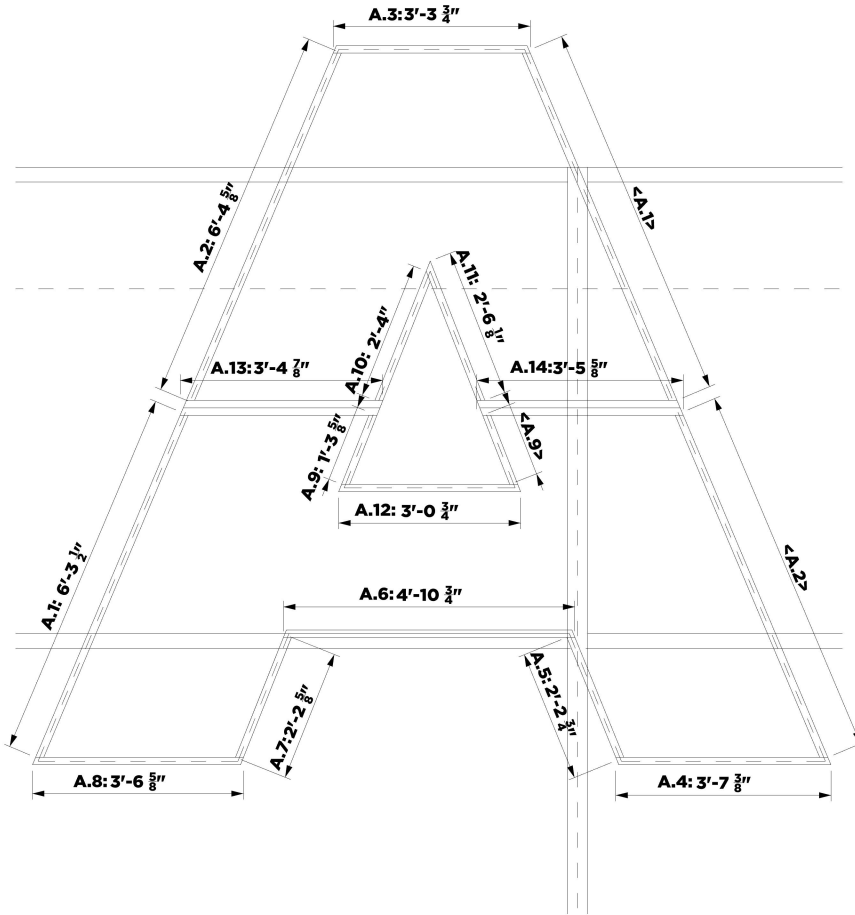
MEMBER NAME	MEMBER SIZE / GAUGE	LENGTH	QTY.	TOTAL LENGTH REQ.	STD. MANUFACTURER MEMBER LENGTH	EXPECTED 'SCRAP' DIMENSION	CUT DESIGNATION
N.1:	1.5 x 1.5 x 1/8	11' - 9"	2	23.5 '			
N.2:	1.5 x 1.5 x 1/8	3' 2 1/2"	1	3.208 '			
N.3:	1.5 x 1.5 x 1/8	8' - 1 3/4"	1	8.145 '			
N.4:	1.5 x 1.5 x 1/8	6' - 7"	1	6.583 '			
N.5:	1.5 x 1.5 x 1/8	3' - 3 1/4"	1	3.27 '			
N.6:	1.5 x 1.5 x 1/8	3' - 0 1/4"	1	3.02 '			
N.7:	1.5 x 1.5 x 1/8	8' - 5 3/8"	1	8.447 '			
N.8:	1.5 x 1.5 x 1/8	6' - 9 7/8"	1	6.822 '			
N.9:	1.5 x 1.5 x 1/8	3' - 3 1/4"	1	3.27 '			
N.C:	1.5 x 1.5 x 1/8	4' - 3 1/8"	2	8.52 '			



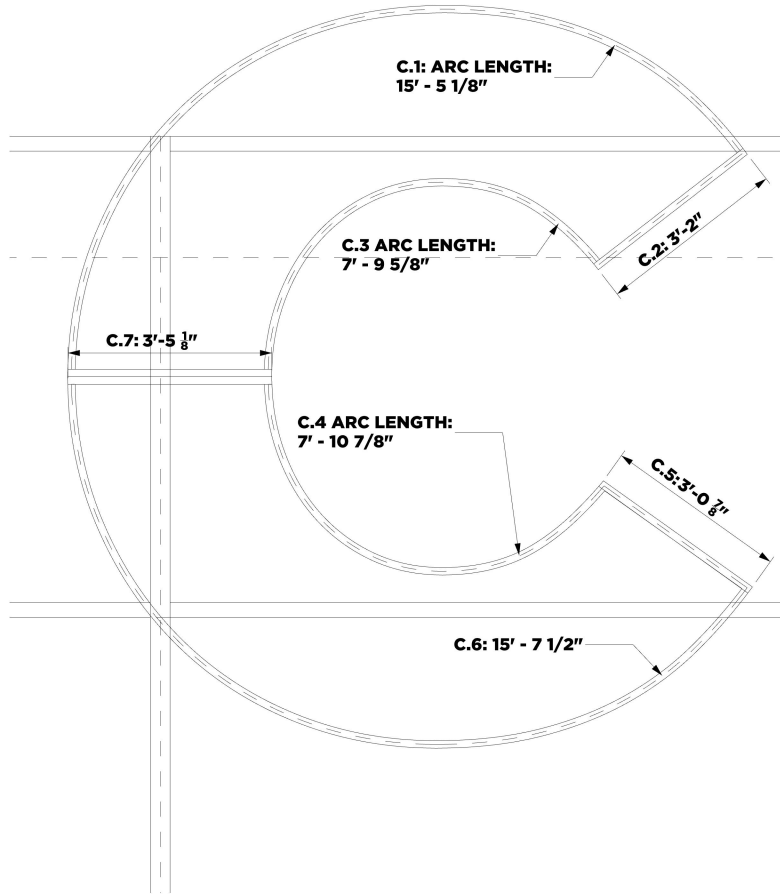
MEMBER NAME	MEMBER SIZE / GAUGE	LENGTH	QTY.	TOTAL LENGTH REQ.	STD. MANUFACTURER MEMBER LENGTH	EXPECTED 'SCRAP' DIMENSION	CUT DESIGNATION
O.1 (ARC):	1.5 x 1.5 x 1/8	9' - 10 7/8"	2	19.812'			
O.2 (ARC):	1.5 x 1.5 x 1/8	19' - 7"	2	39.166'			
O.3:	1.5 x 1.5 x 1/8	3' - 4 3/4"	4	13.58'			



MEMBER NAME	MEMBER SIZE / GAUGE	LENGTH	QTY.	TOTAL LENGTH REQ.	STD. MANUFACTURER MEMBER LENGTH	EXPECTED 'SCRAP' DIMENSION	CUT DESIGNATION
D.1:	1.5 x 1.5 x 1/8	11' - 9"	1	11.75'			
D.2:	1.5 x 1.5 x 1/8	4' - 7 1/2"	2	9.25'			
D.3 (ARC):	1.5 x 1.5 x 1/8	10' - 0"	2	20'			
D.4:	1.5 x 1.5 x 1/8	2' - 11 1/8"	2	5.854'			
D.5:	1.5 x 1.5 x 1/8	1' - 5 7/8"	2	2.978'			
D.6 (ARC):	1.5 x 1.5 x 1/8	5' - 1"	2	10.166'			
D.7:	1.5 x 1.5 x 1/8	3' - 3 7/8"	2	6.644'			
D.8:	1.5 x 1.5 x 1/8	3' - 4 3/4"	2	6.79'			

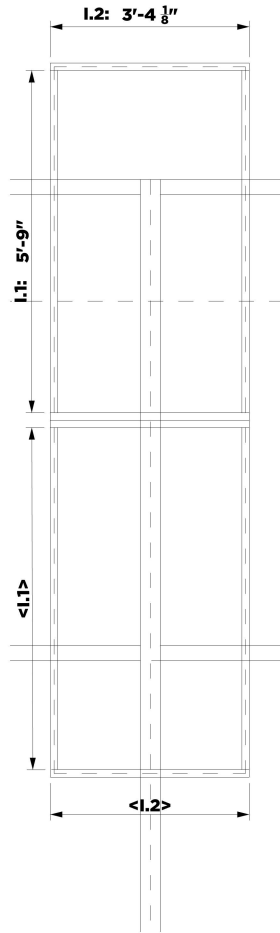


MEMBER NAME	MEMBER SIZE / GAUGE	LENGTH	QTY.	TOTAL LENGTH REQ.	STD. MANUFACTURER MEMBER LENGTH	EXPECTED 'SCRAP' DIMENSION	CUT DESIGNATION
A.1:	1.5 x 1.5 x 1/8	6' - 3 1/2"	2	12.582'			
A.2:	1.5 x 1.5 x 1/8	6' - 4 5/8"	2	12.77'			
A.3:	1.5 x 1.5 x 1/8	3' - 3 3/4"	1	3.312'			
A.4:	1.5 x 1.5 x 1/8	3' - 7 3/8"	1	3.614'			
A.5:	1.5 x 1.5 x 1/8	2' - 2 3/4"	1	2.229'			
A.6:	1.5 x 1.5 x 1/8	4' - 10 3/4"	1	4.895'			
A.7:	1.5 x 1.5 x 1/8	2' - 2 5/8"	1	2.218'			
A.8:	1.5 x 1.5 x 1/8	3' 6 5/8"	1	3.552'			
A.9:	1.5 x 1.5 x 1/8	1' - 3 5/8"	2	2.604			
A.10:	1.5 x 1.5 x 1/8	2' - 4"	1	2.333			
A.11:	1.5 x 1.5 x 1/8	2' - 6 1/8"	1	2.51			
A.12:	1.5 x 1.5 x 1/8	3' - 0 3/4"	1	3.062			
A.13:	1.5 x 1.5 x 1/8	3' - 4 7/8"	2	3.406			
A.14:	1.5 x 1.5 x 1/8	3' - 5 5/8"	2	3.468			

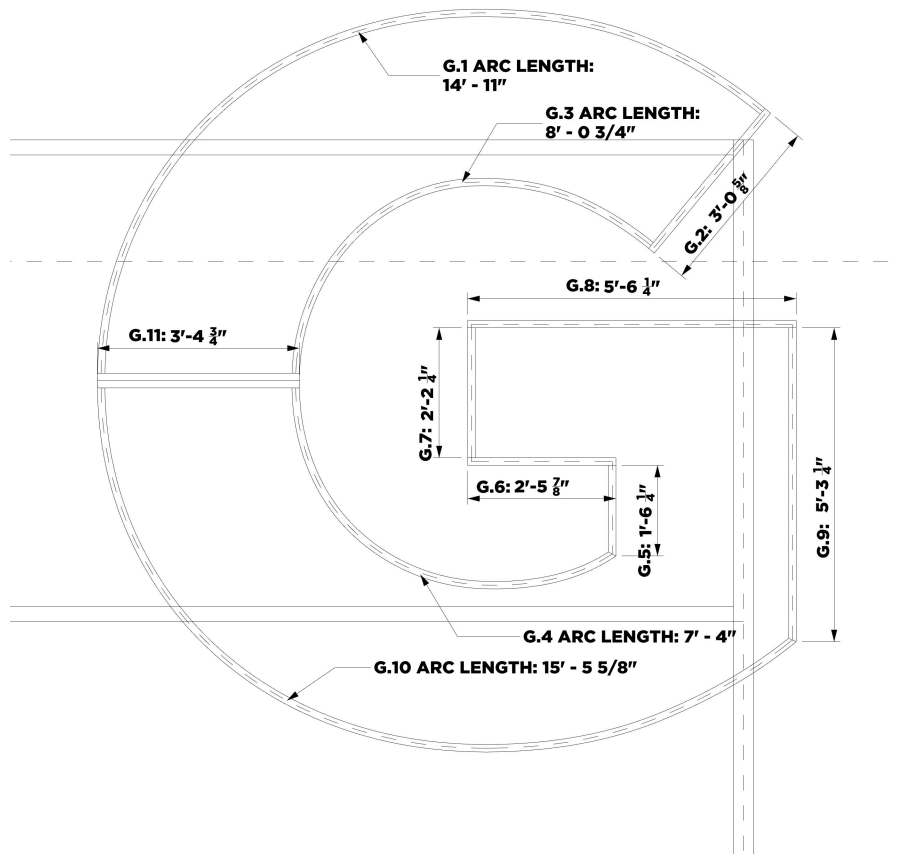


MEMBER NAME	MEMBER SIZE / GAUGE	LENGTH	QTY.	TOTAL LENGTH REQ.	STD. MANUFACTURER MEMBER LENGTH	EXPECTED 'SCRAP' DIMENSION	CUT DESIGNATION
C.1 (ARC):	1.5 x 1.5 x 3/8 *	15' - 5 1/8"	1	15.427'			
C.2:	1.5 x 1.5 x 3/8 *	3' - 2"	1	3.166'			
C.3 (ARC):	1.5 x 1.5 x 3/8 *	7' - 9 5/8"	1	7.802'			
C.4 (ARC):	1.5 x 1.5 x 3/8 *	7' - 10 7/8"	1	7.906			
C.5:	1.5 x 1.5 x 3/8 *	3' - 0 7/8"	1	3.072'			
C.6 (ARC):	1.5 x 1.5 x 3/8 *	15' - 7 1/2"	1	15.625'			
C.7:	1.5 x 1.5 x 3/8 *	3' - 5 1/8"	2	6.854'			





MEMBER NAME	MEMBER SIZE / GAUGE	LENGTH	QTY.	TOTAL LENGTH REQ.	STD. MANUFACTURER MEMBER LENGTH	EXPECTED 'SCRAP' DIMENSION	CUT DESIGNATION
I.1:	1.5 x 1.5 x 1/8	5' - 9"	4	23'			
I.2:	1.5 x 1.5 x 1/8	3' - 4 1/8"	4	13.372'			



MEMBER NAME	MEMBER SIZE / GAUGE	LENGTH	QTY.	TOTAL LENGTH REQ.	STD. MANUFACTURER MEMBER LENGTH	EXPECTED 'SCRAP' DIMENSION	CUT DESIGNATION
G.1 (ARC):	1.5 x 1.5 x 3/8 *	14' - 11"	1	14.916'			
G.2:	1.5 x 1.5 x 3/8 *	3' - 0 5/8"	1	3.052'			
G.3 (ARC):	1.5 x 1.5 x 3/8 *	8' - 0 3/4"	1	8.062'			
G.4 (ARC):	1.5 x 1.5 x 3/8 *	7' - 4"	1	7.333'			
G.5:	1.5 x 1.5 x 3/8 *	1' - 6 1/4"	1	1.52'			
G.6:	1.5 x 1.5 x 3/8 *	2' - 5 7/8"	1	2.489'			
G.7:	1.5 x 1.5 x 3/8 *	2' - 2 1/4"	1	2.187'			
G.8:	1.5 x 1.5 x 3/8 *	5' - 6 1/4"	1	5.52'			
G.9:	1.5 x 1.5 x 3/8 *	5' - 3 1/4"	1	5.27'			
G.10 (ARC):	1.5 x 1.5 x 3/8 *	15' 5 5/8"	1	15.468'			
G.11:	1.5 x 1.5 x 3/8 *	3' - 4 3/4"	2	6.79'			

# ARTWORK 01

ARTISTS: GILLIE AND MARC



## Medium

Bronze

## Dimensions

85.4 x 78.7 x 47.2 inch (H\*L\*W) 992 lbs

## They were no master chefs but that didn't stop them making a feast

EAT transports us to the kitchen where Rabbitwoman and Dogman are cooking up a storm. Side by side with a bottle of wine handy to spruce up the food (with a glass or two while they go), Rabbitwoman and Dogman show how much fun it can be to cook a meal together. As Rabbitwoman dices and Dogman mixes, they know that they are all set for some exceptional nourishment, both for their stomachs and their hearts. Because when Rabbitwoman and Dogman cook together it is so much more than just making food.

# ARTWORK 02

ARTISTS: GILLIE AND MARC



## Medium

Bronze

## Dimensions

86.6 x 70.9 x 47.2 inch (H\*L\*W) 772 lbs

## They believed every journey was a beautiful adventure

LIVE sees our lovers heading off on an adventure, each with a suitcase in hand. Where they are going is up for interpretation. We all live our lives so differently and go down many different paths on our own special adventures of life. The important thing is that we do remember to take these journeys. The suitcases in Rabbitwoman and Dogman's hands are symbolic of these adventures we all must take, whatever they may be. Their secret that they want to share is that wherever you go, you go with joy and wonder. That way you will always live with happiness.

# ARTWORK 03

ARTISTS: GILLIE AND MARC



## Medium

Bronze and stainless steel

## Dimensions

67.3 x 132.7 x 62.2 inch (H\*L\*W) 882 lbs

## They had a big whale of a time

It's an unforgettable moment, to see the immense tail of a whale. For a fraction of a moment, this monumental 'Y' rises above the shimmering water before disappearing back into the depths. Beneath the sparkling surface of the great blue are all kinds of creatures. They hold the secrets of the history of our planet. But, growing larger than even the dinosaurs, the whales are perhaps the most important of them all.

Whales have captured our imaginations for centuries. But back in the day, we were doing most of the catching. In the late 18th century, whaling really found its stride. Huge numbers of whales were killed every year to fuel the Industrial Revolution. Whale oil was needed to lubricate all these new machines and factories, and also to light the homes of everyday people. Whales were also exploited for all kinds of goods, such as soap, perfume, clothing, and fish hooks as well as being a source of food.

With the Industrial Revolution came technological advancements. The 19th century brought exploding harpoons and steam-powered ships, allowing whalers to kill whales at an extraordinary rate. By the mid-20th century, most species of large whales were on the brink.

# ARTWORK 04

ARTISTS: GILLIE AND MARC



## Medium

Bronze and stainless steel

## Dimensions

79.5 x 65.7 x 90.2 inch (H\*L\*W) 1433.3 lbs

## Swimming with a flamingo

Expertly crafted in everlasting bronze and mirror stainless steel, Rabbitwoman and Dogman, Gillie and Marc's most iconic hybrid characters, are off on a brand-new adventure, setting sail on... a giant inflatable flamingo! This public sculpture experience is a bit different. With the world in a state of uncertainty, too much time has been put into negativity. The world needs a bit of respite, to be able to sit back, relax, and laugh a bit. It's times like these when it's more important than ever to keep on smiling and finding the positivity in life. Rabbitwoman and Dogman have already thrown off the negativity, chucked on their swimming trunks and jumped on board their inflatable flamingo. The flamingo, beautifully coated in stainless steel to really make it shine, is the perfect accessory for any trip to the water, exuding the ideas of fun in the sun and a time to enjoy and play. To make sure it's not just Rabbitwoman and Dogman having fun, there is ample space behind Dogman for someone to jump on board and head out on the adventure too. It encourages people to let their inner silliness come to the surface and just have fun. If anyone is searching for that silver lining in these trying times, they can jump on-board the shining silver flamingo and know that everything will be alright. This sculpture is incredibly important to help boost the morale of the public. It is not trying to be anything other than joy, and that is exactly what people need right now. We need to laugh together, to play together, and remember to embrace the fun side of life. If we can do that, we can get through anything.