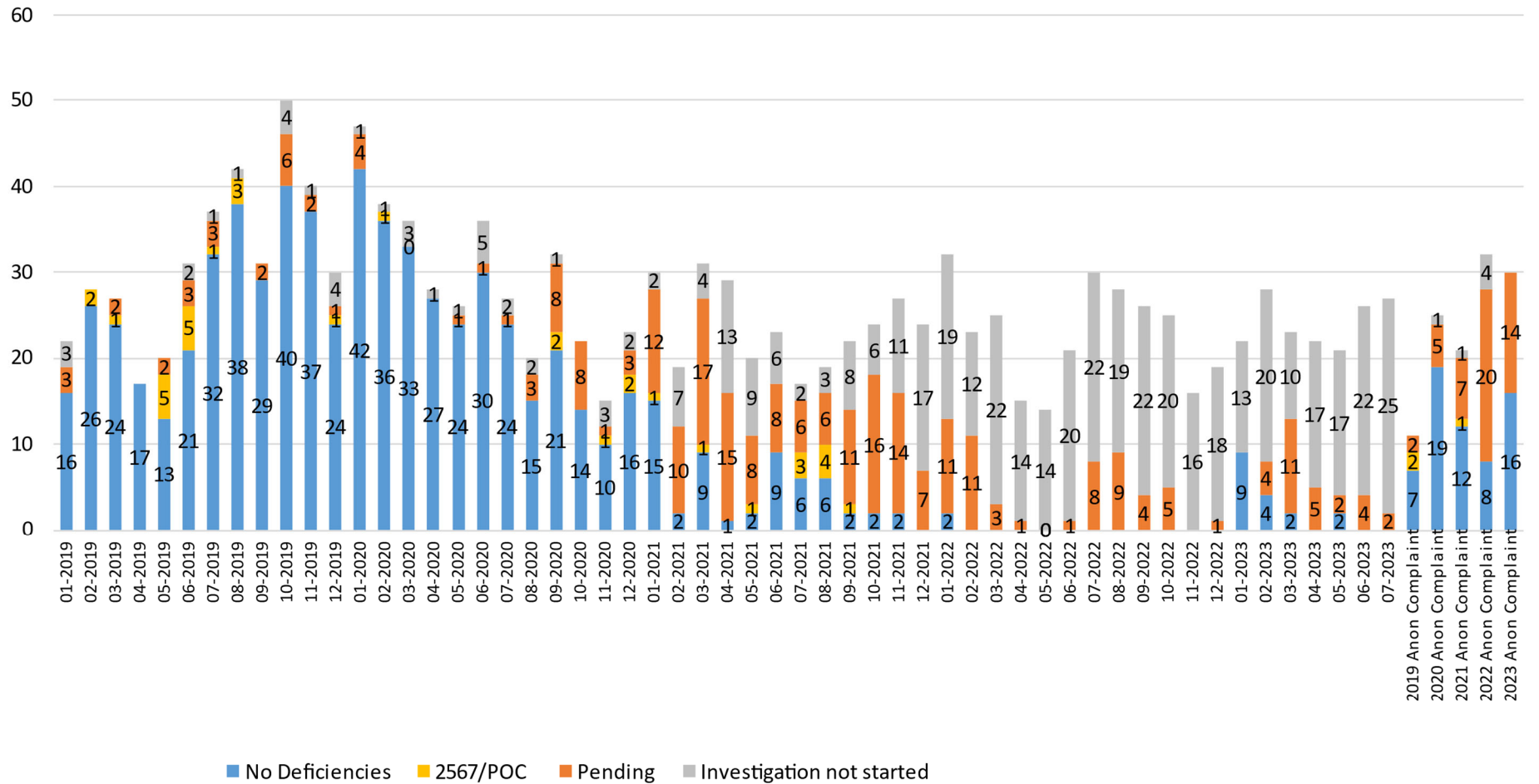




ITEM	DISCUSSION
FACILITY REPORTED INCIDENTS (FRI)	<p>During July 2023, LHH submitted a total of 25 FRIs to CDPH; there was 2 anonymous complaints from CDPH. The FRIs include allegations of abuse, adverse events, and other reportable issues. CDPH has initiated investigation into some of the cases, but final determination of potential deficiencies has not been determined for all cases.</p> <p>June: 27 cases (25 FRI; 2 anonymous complaint) <i>(25 investigation not started by CDPH; 2 pending outcome)</i></p> <ul style="list-style-type: none"> • 19 allegations of abuse <ul style="list-style-type: none"> ○ Resident to resident: 5 <i>(5 investigation not started by CDPH)</i> ○ Staff to resident: 8 <i>(8 investigation not started by CDPH)</i> ○ Other to resident: 1 <i>(1 investigation not started by CDPH)</i> ○ Injury of Unknown Source: 5 <i>(5 investigation not started by CDPH)</i> • 2 misappropriations of resident’s property/theft <i>(2 investigation not started by CDPH)</i> • 3 adverse events <i>(3 investigation not started by CDPH)</i> • 1 complaint <i>(1 investigation not started by CDPH)</i> • 2 Anonymous Complaints <i>(2 pending)</i>
SURVEY UPDATES	None
PLAN OF CORRECTION UPDATES/REPORTING	
EMAIL/TELEPHONE REQUESTS IN LIEU OF SITE VISITS	Total of 0 FRI were investigated through document request.
ONGOING SITE VISITS	<p>1. Site visit on 7/25/23</p> <ul style="list-style-type: none"> • Four CDPH surveyors investigated 2 Anonymous Complaints and 1 Facility Reported Incidents.
PENDING SITE VISITS	242 FRI pending without document request or call/visit.
UPCOMING SURVEYS	None.
CONTINUOUS SURVEY READINESS AND EDUCATIONAL UPDATES	Quality Management continues daily rounding across units to ensure the best practices are being implemented as it relates to infection prevention and control, risk management, patient safety, and regulatory expectations. Daily feedback will be shared with the unit leadership.



Outcome of Facility Reported Incidents (FRIs)





Outcome of Staff to Resident Allegations of Abuse
Facility Reported Incidents (FRIs)

