



Ronald Alameida, Deputy Director & City Architect | Building Design & Construction
ronald.alameida@sfdpw.org | T. 628.271.3075 | 49 South Van Ness Ave. Suite 1600, San Francisco, CA 94103

The Earthquake Safety and Emergency Response Bond Program 2010, 2014 & 2020

Quarterly Status Report

April through June 2023



911 Call Center construction at the City's Emergency Operations Center

Prepared for the:

- Office of the Chief Medical Examiner
- Department of Emergency Management
- San Francisco Fire Department
- San Francisco Police Department
- Public Utilities Commission
- Recreation and Parks Department

Submitted by

Charles Higuera, FAIA

Program Manager

Earthquake Safety and Emergency Response Bond Program

(ESER 2010, 2014 & 2020)

Table of Contents

Executive Summary.....	3
Program Summary and Status	6
Public Safety Building (ESER 2010).....	6
Neighborhood Fire Stations (ESER 2010).....	8
Neighborhood Fire Stations (ESER 2014).....	12
Neighborhood Fire Stations & Support Facilities (ESER 2020)	16
Emergency Firefighting Water System (ESER 2010, 2014, 2020)	18
Office of the Chief Medical Examiner (ESER 2014).....	20
Traffic Company & Forensic Services Division (ESER 2014).....	22
Police Facilities (ESER 2014).....	24
Police Facilities (ESER 2020).....	25
Disaster Response Facilities (ESER 2020).....	28
9-1-1 Call Center (ESER 2020)	30
Budget, Funding and Expenditures.....	32
ESER 2010.....	32
ESER 2014.....	33
ESER 2020.....	34
Attachments.....	35
Attachment 1 – Contact Information.....	35

Earthquake Safety and Emergency Response Bond Program

(ESER 2010, 2014 & 2020)

Executive Summary

The \$412.3 million **Earthquake Safety and Emergency Response 2010 (ESER 2010) Bond Program** consists of three components: **Public Safety Building, Neighborhood Fire Stations & Support Facilities**, and **Auxiliary Water Supply System**.

The \$400 million **Earthquake Safety and Emergency Response 2014 (ESER 2014) Bond Program** consists of five components: **Office of the Chief Medical Examiner, Traffic Company & Forensic Services Division, Neighborhood Fire Stations & Support Facilities, Emergency Firefighting Water System**, and **Police Facilities**.

The \$628.5 million **Earthquake Safety and Emergency Response 2020 (ESER 2020) Bond Program** consists of five components: **Emergency Firefighting Water System, Neighborhood Fire Stations & Support Facilities, District Police Station & Support Facilities, Disaster Response Facilities (Kezar Pavilion)**, and **9-1-1 Call Center**.

The *Office of the Chief Medical Examiner* project was inaugurated in November 2017 and is fully operational. The project was awarded LEED Gold certification in June 2021.

The *Traffic Company & Forensic Services Division (TCFSD)* construction has been completed and only minor post-move-in adjustments were requested by some occupants. Temporary Certificate of Occupancy (TCO) was granted on July 22, 2021, Substantial Completion was issued on August 27, 2021, 25 days ahead of schedule, and DBI issued the Certificate of Final Completion and Occupancy (CFCO) on January 6, 2022. The FSD (Crime Lab) moved into the facility on January 14th and February 18th. LEED Gold confirmation occurred in July 2022.

Under *Neighborhood Fire Stations* component, ESER 2010, the Generator Replacement Project at Station 14 is anticipated to bid in the fall of 2023.

Under *Neighborhood Fire Stations* component, ESER 2014, the floating *Fireboat Station 35* achieved Final Completion on November 22, 2022. Under the *Focused Scope Program*, the Generator Replacement Project at Station 19 is anticipated to bid in the summer to fall of 2023. The SFFD Network Improvement Project, which will upgrade network infrastructure at fire stations, has begun preparatory meetings with the Department of Technology and Public Works' A/E consultants. Fire station site survey work began in January of 2023 and as of June 2023 Rings 1 through 6 (of 10) have been surveyed.

Under ESER 2020 *Neighborhood Fire Stations* component, the negotiations on the Executive Architect agreement for the Fire Training Facility are nearing completion and Concept Design is expected to begin in late-August (pending timing for BOS approval of the contract).

Earthquake Safety and Emergency Response Bond Program (ESER 2010, 2014 & 2020)

Under *Police Facilities* component, ESER 2014, *Northern, Taraval, and Richmond Station Renovation Project* was completed in November 2021 and the *Park and Ingleside Station Project* was completed in May 2021. *Bayview and Tenderloin Station MEP Upgrades Project* is scheduled to be financially closed in Q4 FY23. Under ESER 2020, the *Police Facilities* component will consist of three selected improvement projects: *Ingleside District Police Station Replacement*; *Mission District Police Station Structural Improvement*; and the construction of a temporary *Police Surge Facility* to enable the work at the Ingleside site. Structural improvements work at the *Mission District Police Station* is expected to complete by August 2023; it will be the first construction project under this component. For the *Ingleside District Police Station Replacement*, a CM/GC (Construction Manager/ General Contractor) was selected through a competitive process. Schematic Design was complete for the *Surge Facility* in May 2023, and estimated to be under the allocated budget.

The Public Utilities Commission manages the projects under the *Auxiliary Water Supply System* and the *Emergency Firefighting Water System* components for all three programs. Pumping Station 2 (WD-2687) construction completed May 2023. Construction continued on the , Clarendon Supply Pipeline (WD-2861), 19th Ave Pipeline (2652J), and Vincente Pipeline (WW-711) contracts.

The Recreation and Parks Department manages the *Disaster Response Facilities (Kezar Pavilion)* component under ESER 2020. The project concept plan is moving forward with updates to the plan to allow for better circulation and adequate space for building systems. Our project's preservation architect has concluded on-site assessments, which will help expedite the Planning Departments review and approval process. Exploratory investigation work has been completed on hazardous material surveys as well as geotechnical evaluations. We are currently working to conduct structural destructive testing work to determine the buildings existing structural condition. The project team will continue to coordinate with City staff (including RPD, DEM & HSA) on the building's preliminary design and public engagement will begin this fall. The team will also begin the Civic Design Review process after the initial public engagement is complete. The project team is engaging with a second estimating consultant as a peer review process to confirm current budget and construction costs based on market conditions. The estimating process has been completed and we are waiting on the final cost reconciliation estimates, which are due by the end of July 2023.

9-1-1 Call Center Renovation project (under ESER 2020) is under construction.

To date, the ESER 2010 program has received the proceeds of six bond sales totaling \$412,300,000 and in addition has received partial interest earned, with a current total appropriation of \$416,758,554 (inclusive of bond financing costs). The ESER 2014 program has received the proceeds of three bond sales totaling \$400,000,000 (inclusive of bond financing

Earthquake Safety and Emergency Response Bond Program (ESER 2010, 2014 & 2020)

costs). ESER 2010 & 2014 accrued interest (\$2.3M and \$12M respectively) is expected to be appropriated in Q1 FY24. The ESER 2020 program has received the proceeds of two bond sales, totaling \$167,805,000 (inclusive of bond financing costs).

Earthquake Safety and Emergency Response Bond Program (ESER 2010, 2014 & 2020)

Program Summary and Status

Public Safety Building (ESER 2010)



Photo © Tim Griffith, 2015

Location: Block 8 in the Mission Bay South Redevelopment Area. The block is bounded by Mission Rock, Third, and China Basin Streets.

Project Description: The Public Safety Building (PSB) is meant to provide a new venue for the SFPD Headquarters – effectively the command-and-control administration of the City’s police department – and includes the relocation of Southern District Station and a new Mission Bay Fire Station #4. Included in the project is the reuse of Fire Station #30, which will serve as the Arson Task Force HQ and provide a community meeting room at the ground level. Historic resource consultants have determined that the existing fire station is eligible for the National Register of Historic Places. Consistent with the Mission Bay SEIR Addendum No. 7, Mitigation Measures, Item D.02, this facility will be retained and reused in a manner that preserves its historic integrity. The other components of the project will be designed to be respectful of the historic integrity of the existing fire station.

Earthquake Safety and Emergency Response Bond Program (ESER 2010, 2014 & 2020)

Project Background: The functionality of the entire police department in the event of a major catastrophe relies on the ability of the police leadership within police command center headquarters to promptly and properly coordinate public safety services in the city. The district station plays an equally critical role in providing responsive public safety to residents of San Francisco in a timely manner. This station deploys officers 24/7 to the Southern District, who are the first responders to public calls for service, as well they provide support to other first responders including the Fire Department, Medical Examiner, and emergency medical services.

Project is complete and the facility is occupied.

Project Budget: Project Cost, inclusive of all change orders to date, tracked to within the Total Project Budget of \$243M (GO Bonds and general funds). Project savings have been reallocated to NFS 2010 bond component; any remaining unspent balances will be reviewed for future spending authorization and reallocation.

Earthquake Safety and Emergency Response Bond Program

(ESER 2010, 2014 & 2020)

Neighborhood Fire Stations (ESER 2010)

Component Description: The ESER bond will renovate or replace selected fire stations to provide improved safety and a healthy work environment for the firefighters. The selected stations are determined according to their importance for achieving the most effective delivery of fire suppression and emergency medical services possible.

Background: All of the 43 San Francisco Fire Stations have, as a result of minimal deferred maintenance over decades, yielded building conditions that potentially compromise the safety and health of firefighters. Many stations have structural/seismic and other deficiencies that could inhibit their continuous functionality. It is assumed that some may not be operational after a large earthquake or other disasters, hindering the ability of the firefighters to respond to calls for service. Seismic capacity study of key fire stations –10 of 43- has yielded necessary insight into their ability to sustain operational effectiveness. Additional stations will be examined as funding is provided.

Prior to approval of the bond program, the majority of the City’s fire stations, and support facilities were generally assessed for their respective condition and to identify vulnerabilities or deficiencies that could compromise their essential role as deployment venues for first responders.

For budget planning purposes, the assessment reports were reviewed by cost estimators who prepared estimates of the cost of correcting the conditions noted in the assessments. The cost estimates indicate only the overall “order of magnitude” of the various facility deficiencies and relative proportions of various types of work.

Preliminary assessment of the neighborhood fire stations indicate that the sum of all existing maintenance generated deficiencies would require a budget exceeding \$350M to correct, significantly more funds than are available in this bond for such purposes. Therefore, additional detailed planning is required to focus the expenditures of this bond towards the most beneficial and cost-effective immediate rehabilitation and/or improvement projects.

A list of projects to be completed by the ESER 2010 bond was identified by Public Works and the Fire Administration and accepted by the Fire Commission at their meeting of September 23, 2010.

The ESER 2010 bond program is anticipated to complete improvements to 29 of the 43 neighborhood fire stations. The approved slate of projects was presented to the SF Fire Commission on April 26, 2012.

The following is a detailed status per project:

Earthquake Safety and Emergency Response Bond Program (ESER 2010, 2014 & 2020)

Seismic Projects



Fire Station No. 16 (Marina District)

Substantial completion was achieved on January 10, 2019. SFFD began occupying and operating out of the new station on January 16, 2019. The United States Green Building Council (USGBC) awarded the project LEED Gold Certification on August 4, 2021.

Fire Station No. 5 (Fillmore District)

Substantial Completion was achieved on April 26, 2019. SFFD began occupying and operating out of the station on April 29, 2019. Final Completion was achieved on February 19, 2020. On December 17, 2020, project was awarded LEED Gold Certification New Construction from the United States Green Building Council (USGBC).



Fireboat Station 35: (See *ESER 2014 this report*)

Fireboat Station 35 occurs within the ESER 2014 Program, however the pre-design and CEQA and environmental review costs of \$687,125 occurred under ESER 2010. The budget that was identified for Station 35 was funded by ESER 2010 and the Fire Facilities Bonds funds totaling \$17M. The ESER 2010 funding will be used to offset Station 5 and 16. The Fire Facilities Bond funds will continue to supplement ESER 2014 funds for Station 35.

Equipment Logistics Center (ELC):

The ELC project was identified after the passage of the bond – it was suggested as a project combining the Bureau of Equipment (BOE) and Emergency Medical Services (EMS). In this configuration, the total functional program area made it infeasible to occur at the current EMS venue at 1415 Evans; more significantly, the budget for such a project was not available within the ESER 2010 NFS funding.

SFFD requested that Public Works prepare a program analysis and cost estimate for the EMS separate from the BOE for consideration in the 2016 Public Health and Safety Bond – successfully passed by voters, receiving 79 percent voter approval in June 2016, and the Ambulance Deployment Facility project was completed in 2021. The BOE remains a priority project as it resides within a seismically compromised unreinforced brick building.

Earthquake Safety and Emergency Response Bond Program

(ESER 2010, 2014 & 2020)

Comprehensive Project: Station 36

Project was successfully completed and SFFD reoccupied the station on November 19, 2014.

Focused Scope Projects

Roof Replacements – 15 Stations – Complete

Summary: The scope consists of installing new roofing systems and upgrading exhaust fans at fifteen (15) stations (FS 2, 6, 10, 13, 15, 17, 18, 26, 28, 31, 32, 38, 40, 41, and 42).

Exterior Envelope Improvements – 16 Stations – Complete

Summary: The scope consists of paint and ancillary work to prevent water intrusion at sixteen (16) stations (FS 2, 6, 10, 13, 15, 17, 18, 26, 28, 31, 32, 38, 40, 41, 42, and 49).

Emergency Generator Replacement – 5 Stations – Complete

Summary: The scope consists of installing new emergency generators and related ancillary scopes of work at five (5) stations (FS 6, 12, 15, 17, and 21).

Shower Reconstruction – 9 Stations – Complete

Summary: The scope of work consists of demolition of existing shower stalls and installation of new shower stalls including shower pans, shower heads, divider walls, glass doors, floor drains, p-traps, access panels, and ancillary scopes of works at nine (9) stations (FS 6, 13, 15, 17, 18, 26, 38, 40, and 41). Stations 17 and 18 were put on hold by SFFD due to scope complexity.

Mechanical Scope – 15 Stations – Complete

Summary: The scope is structured into two phases: Phase 1 – Investigation and Scope Validation, and Phase 2 – Execution of Work. Work was completed at fifteen (15) stations (FS 2, 6, 10, 13, 15, 17, 18, 26, 28, 31, 32, 38, 40, 41, and 42).

Window Repair – 12 stations – Complete

Summary: The scope consists of installing new latch, handle, weep holes, sealant and weather-strip to existing windows, replacing broken panes of glasses, and adjusting alignment and resealing the perimeter of the frame to watertight at twelve (12) stations (FS 2, 6, 17, 25, 26, 28, 31, 32, 38, 40, 41, and 42).

Additional Focused Scope

Summary: Additional Focused Scope includes Apparatus Bay Door Replacement at multiple Fire Stations and Exterior Envelope Painting at Fire Department Headquarters. In addition, in July 2017, SFFD requested that additional Fire Stations receive Generator Replacements. The funding allocated for Additional Generators will be applied toward a prioritized list of Fire Stations selected by SFFD.

Detail:

Earthquake Safety and Emergency Response Bond Program (ESER 2010, 2014 & 2020)

- **Emergency Generator Replacement – 1 Station (FS 14)**
Building permit was issued on June 17, 2021. Contractor procurement projected to start in the fall of 2023.
- **Apparatus Bay Door Replacement – 10 Stations – Complete**
Contractor completed work at 10 fire stations (FS 8, 12, 14, 18, 20, 26, 28, 33, 39, and 43).
- **Exterior Envelope Improvements – SFFD Headquarters – Complete**

Earthquake Safety and Emergency Response Bond Program (ESER 2010, 2014 & 2020)

Neighborhood Fire Stations (ESER 2014)

Component Description: The ESER 2014 bond program continues the work of ESER 2010 bond, categorizing projects according to three sub-categories: Focused Scope, Comprehensive, and Seismic. The ESER 2014 bond program will continue to address identified and prioritized needs at Fire Stations that were previously not addressed under the 2010 program. Significant construction projects will have been completed at all SFFD Fire Stations at the conclusion of the 2010 and 2014 bond programs.

SFFD approved the NFS Focused Scope, Comprehensive and Seismic budget portfolio in April 2015. In April of 2018, SFFD approved an updated budget revision.

Design services are being provided by Public Works Bureaus of Architecture & Engineering, unless otherwise noted.

The following is a detailed status per project.

Seismic Projects

Fireboat Station 35 at Pier 22½

Design-Builder: Swinerton-Power, a Joint Venture and Shah Kawasaki Architects

Substantial completion was achieved on February 28, 2021. Ribbon Cutting Ceremony held on March 10th, 2022. Punchlist items have been completed. Final Completion was issued on November 22, 2022. The construction contract is in closeout and final payment to the design-builder is expected to be issued in July 2023. . The project is in the warranty phase.



Earthquake Safety and Emergency Response Bond Program (ESER 2010, 2014 & 2020)



Fire Station 35 at Pier 22½ (Photos by Russell Abraham)

Pier 26 Fireboat Berths

Design Services: COWI North America; Contractor: Vortex Marine Construction

Substantial Completion issued on September 16, 2020. Certificate of Final Completion was issued in July 2021. Project is completed.

Comprehensive Projects:

Fire Station 3 & 7

FS 3 was determined to be a potential collapse hazard in the event of a major earthquake based on the structural assessment received from the Public Works IDC-Structural study. SFFD directed the design work to stop and will consider plans for a new FS 3 in its overall seismic portfolio of future bonds. FS 7 was determined to be a project that, as instructed by the CPC, would provide funds to supplement the TCFSD project and funds were transferred in Q4 FY2021. Nonetheless, FS 7 is not anticipated to be a project delivered under ESER 2020 as there are insufficient funds to allocate for the preferred project of replacement.

Focused Scope Projects:

The NFS team has moved forward with planning, design, bidding, and construction of the Focused Scope projects in all 9 of the categories: apparatus bay doors, roof replacements, shower renovation, exterior envelope, windows, sidewalk, emergency generator, mechanical projects, and IT network improvements.

Earthquake Safety and Emergency Response Bond Program

(ESER 2010, 2014 & 2020)

Design services are being provided by Public Works Bureaus of Architecture (BOA) and Engineering (BOE) for Roofing, Exterior Envelope, Apparatus Bay Door, Showers, Windows, and Sidewalk categories of work. GHD, an as-needed electrical engineering consultant is providing design services for Generator Replacement projects. Department of Technology and Public Works A/E consultant TEF are undertaking the SFFD Network Modernization Project to survey, document, and upgrade network equipment at all fire stations.

Apparatus Bay Doors – 34 Stations – Complete

Work at the 34 fire stations were divided between ESER 2010 and ESER 2014, within parameters of allocated budgets under each bond. Packages 1 through 5 were completed in 2016-2021.

Roof Replacements – 9 Stations – Complete

Work was completed at nine (9) stations (FS 3, 9, 17, 20, 23, 24, 29, 40, and 43).

Shower Reconstruction – 7 Stations – Complete

Work was completed at seven (7) stations (FS 13, 17, 19, 20, 22, 33, and 34).

Window Repairs – 13 Stations – Complete

Work was completed at thirteen (13) stations (FS 8, 9, 11, 12, 14, 19, 20, 21, 23, 25, 29, 37, 43).

Exterior Envelope Improvements – 8 Stations

- Package 1 (FS 8, 20, 23 & 29): Scope includes power wash and new paint at exterior facade of stations. BBR was selected to perform the work. Work was completed at FS 8, 20, and 29 in 2018-2019. Public Works was asked to Hold on FS 23 in January 2020, due to other priorities, at the client's request.
- Package 2 (FS 24 & 34): package was determined to be a project that, as instructed by the CPC, would provide funds to supplement the TCFSD project. Funds were transferred to the TCFSD in Q4 FY2021.
- Package 3 (FS 11): Scope of work included painting of the exterior. This project was folded into the Hose Tower Removal project, which is funded by the 2016 Public Health and Safety Bond and was completed in March 2021.
- Package 4 (FS 22): Complete.

Mechanical Scope – 5 Stations – Cancelled

- Package 1 (8, 9, 14, 20 & 41)

Emergency Generator Replacements – 3 Stations

- Station 31: Work is complete.
- Station 2: The scope of work consists of replacement of an existing roof top generator with a new generator, structurally strengthen the roof to support the new fuel tank with capacity

Earthquake Safety and Emergency Response Bond Program

(ESER 2010, 2014 & 2020)

for 72-hour run time and provide new fuel fill port and piping to the generator. The construction contract was awarded to Argo Construction, a certified LBE firm. Due to extraordinary lead times in manufacturing, delivery of the generator took 44 weeks, in lieu of the usual 12 weeks. Public Works issued a Notice to Proceed on April 19, 2021, and Argo mobilized in July 2021. A Substantial Completion Letter was issued to Argo on August 24, 2022 and Final Completion was achieved on October 9, 2022.

- Station 19: Scope of work will consist of replacement of the existing generator with a new generator and fuel tank to meet the Fire Department's 72-hour emergency run time protocol. FS 19 is anticipated to be advertised in the fall of 2023.

Sidewalk and Apparatus Bay Slabs – 3 Stations – Complete

Work was completed at three (3) stations (FS 13, 26, and 31).

Security Access Control Systems – 35 Stations – Complete

Network Modernization Project – Fire Station surveys and documentation in progress

The Project consists of surveying existing network equipment at each fire station to assess needs for equipment upgrades. The network equipment upgrades are under the Department of Technology (DT) scope. Public Works, together with A/E consultants, will work in conjunction with DT to identify and document architectural, electrical, and mechanical elements of work needed to support the network improvements. Site survey work began on January 17, 2023 and as of June, site surveys have been conducted at the following Fire Stations ("FS"):

- **Fiber Ring #3:** FS7, FS9, FS17, FS25, FS29, FS37, FS49 (ADF)
- **Fiber Ring #1:** FS5, FS10, FS16, FS36, FS38
- **Fiber Ring #2:** FS2, FS2, FS3, FS28, FS41, Chief's Residence
- **Fiber Ring #4:** FS32, FS42, FS44, BOE at 2501 25th Street
- **Fiber Ring #5:** FS6, FS11, FS24, FS26, FS43
- **Fiber Ring #6:** FS15, FS19, FS20, FS33, FS39

Earthquake Safety and Emergency Response Bond Program

(ESER 2010, 2014 & 2020)

Neighborhood Fire Stations & Support Facilities (ESER 2020)

Component Description:

ESER funded projects are carefully selected based on the operational and tactical importance of fire stations and support facilities, ensuring the effective deployment of well-trained first responders in the event of a major earthquake or other disaster. The specific improvements and seismic upgrades to neighborhood fire stations and support facilities are established with the Fire Department's approval before the planning and design phases begin. This screening process guarantees that bond funds are spent on the highest priority projects.

New Construction:

Fire Training Facility

Project Background:

The San Francisco Fire Department's (SFFD) new Fire Training Facility (FTF) will be located on two City blocks bounded by Carroll Avenue, Hawes Street, Armstrong Avenue, and Griffith Street. Bancroft Avenue, Griffith Street, and Hawes Street will be vacated to form a contiguous site 346,600 square feet (SF) in area. The purpose of the FTF is to provide necessary, upgraded facilities for effective firefighting and lifesaving, including live-fire training, classroom training, equipment training, and emergency medical services training. The new facility will improve operational efficiency by consolidating existing SFFD training facilities in one new location. The new facility will replace existing fire training facilities in the Mission district and on Treasure Island (which the SFFD is obligated soon to vacate).

The project is comprised of a Fire Training and Administration Building, an Apparatus Building for vehicle and equipment storage, an In-Service Building, a Maintenance Shop, several controlled live-fire and rescue structures (Training Tower, Apartment/Condominium Building, Commercial Structure, Victorian House, Junior-5 House, Vehicle Fire, Simulated Communications Tower), Urban Search and Rescue Simulations (earthquake damaged buildings, confined spaces, trenches) and paved roadways with hills to simulate San Francisco topography and street conditions vehicle maneuvering, fire ladder and fire hose deployment training.

Status:

Programming and Design Criteria documentation was completed on 3/3/2023. The City's Real Estate Division has completed the acquisition of 25 of the 26 parcels of land. The sale of the last parcel, formerly part of Port of San Francisco, was approved by the State Lands Commission on 2/28/2023 but final approval by the governor is still pending. Full site survey data has been delivered as well as supplemental surveys of the storm water and sewer systems under the streets that are planned to be vacated. An MOU with SFPUC is still in negotiation for the access and maintenance of those underground utilities.

Earthquake Safety and Emergency Response Bond Program

(ESER 2010, 2014 & 2020)

Negotiations have been completed for the Executive Architect agreement with RossDrulisCusenbery Architects. Concept Design is planned to begin in late-August, pending the timing needed for BOS approval of the contract. The CM/GC RFQ advertisement is now expected to occur in August 2023.

Project Budget: \$235M (exclusive of land cost)

Project Milestone Schedule:

- Environmental Review – December 2021
- Environmental Review Amendment – December 2022
- Programming Complete – March 2023
- Design & Permitting – August 2023 - April 2026
- Construction / Move-In – September 2025 - July 2028
- Close-Out/Warranty - June 2029

Seismic Improvement:

Fire Station 7 Replacement: Given the project budget of \$235M and the \$40M land acquisition costs for the FTF, there are insufficient funding from ESER 2020 to provide for a replacement project.

Earthquake Safety and Emergency Response Bond Program

(ESER 2010, 2014 & 2020)

Emergency Firefighting Water System (ESER 2010, 2014, 2020)

Component Description: The Earthquake Safety and Emergency Response Bonds will seismically improve the Emergency Firefighting Water System cisterns, pipelines, tunnels, and physical plant.

Background: The Emergency Firefighting Water System is vital for protecting against the loss of life, homes, and businesses from fire following an earthquake. It is also used for the suppression of non-earthquake multiple-alarm fires.

Status:

Planning and Design

1. Potable EFWS Pipeline – Install new Potable Emergency Firefighting Water System pipeline in Richmond and Sunset areas. The Conceptual Engineering Report (CER) for Contract A and B is being finalized. Contract A and B is to install new potable EFWS pipeline from Lake Merced Pump Station to Sloat Blvd/19th Avenue, and 23rd /Vicente to Lawton St respectively. Contract A design starts, and Contract B design will follow.
2. Fireboat Manifold – Construction of new pipeline and fireboat manifold near Fort Mason Pier 2 and Pier 35.5 for fire suppression.

Construction

1. 19th Avenue Pipeline – Install a new 36-inch diameter welded steel Potable Emergency Firefighting Water System (PEFWS) pipeline on 19th Avenue from Vicente Street to Sloat Blvd as part of Public Works' 19th Avenue Roadway Improvements, Contract 2652J. Construction continues, construction completion expected July 2023.
2. Clarendon Supply – Provide a new EFWS water supply and pipe near the crest of Clarendon Avenue at Dellbrook Avenue. Construction completion expected November 2023.
3. Pumping Station 2 – Improve the building structure's seismic performance. Construction completed May 2023.
4. Vicente Pipeline – Install a new 36-inch diameter PEFWS pipeline on Vicente from 19th Avenue to 25th Avenue. Construction completion expected July 2024.

Earthquake Safety and Emergency Response Bond Program (ESER 2010, 2014 & 2020)



Clarendon Supply Site

Earthquake Safety and Emergency Response Bond Program (ESER 2010, 2014 & 2020)

Office of the Chief Medical Examiner (ESER 2014)



Project Description: The project will relocate the Office of the Chief Medical Examiner (OCME) to One Newhall Street in the India Basin Industrial Park. The new facility will house about 50 employees who are organized into the four units of the OCME: Field Investigations, Medical/Autopsy, Laboratory, and Administration.

One Newhall Street was an existing 28,000 gsf industrial warehouse which was substantially demolished, and a second floor was added within the existing footprint of the building resulting in a seismically safe 46,000 gsf facility.

Background: The existing OCME is located at 850 Bryant also known as the Hall of Justice (HOJ). The HOJ is over 50 years old and seismically deficient. In the event of a major earthquake, this building is not expected to be operational. This project is part of a larger strategy to replace the Hall of Justice established in the City's 10-Year Capital Plan as the *Justice Facilities Improvement Program (JFIP)*.

The OCME is accredited by the National Association of Medical Examiners (NAME). During the previous accreditation in 2008, the City was advised that the existing facility was undersized, had

Earthquake Safety and Emergency Response Bond Program (ESER 2010, 2014 & 2020)

multiple deficiencies that are currently mitigated by operational protocols, and that the facility should be replaced to assure continued accreditation.

Project Status:

LEED Gold is the mandatory goal for this project (minimum 60 credits required to be awarded for the Gold certification). Award of one of the final credits, pertaining to Indoor Environmental Quality Credit 1 (IEQc1) – Outdoor Air Delivery Monitoring, required the installation of nine (9) CO2 sensors at the facility. This work was completed in February 2021. In April 2021, the U.S. Green Building Council (USGBC) awarded the project LEED Gold certification.

Project is completed and the facility is occupied.

Project Budget: Project Cost, inclusive of all change orders, tracked to within the Total Project Budget of \$75M (GO Bonds and general funds).

Earthquake Safety and Emergency Response Bond Program (ESER 2010, 2014 & 2020)

Traffic Company & Forensic Services Division (ESER 2014)



Photos by Bruce Damonte

Project Description: The project will relocate the SFPD Forensic Services Division (FSD) and SFPD Traffic Company (TC) to a site located at 1995 Evans Avenue, San Francisco. The amount of space requested for the Traffic Company was determined based on the Police Facilities Master Planning Study dated August 23, 2012.

The project was developed to support a Full Time Employee (FTE) forecast for 2020 FSD demand of approximately 109 for FSD, approximately 100 for the Traffic Company and approximately 9 for the Real Estate Division's building engineering and custodial services. The size of the facility is approximately 100,000 gross square feet, a reduction of approximately 20,000 gross square feet necessary to achieve budget reconciliation. As a result, the potential for future expansion is diminished, if required.

Project Background: The SFPD Traffic Company was located at the Hall of Justice (HOJ) at 850 Bryant Street. The SFPD FSD was in two facilities. The FSD Administration, Crime Scene Investigations, and Identification units were housed at the HOJ. The FSD Crime Lab is housed in Building 606 at the Hunters Point Shipyard.

Earthquake Safety and Emergency Response Bond Program (ESER 2010, 2014 & 2020)

The HOJ is over 50 years old and seismically deficient. In the event of a major earthquake, this building is not expected to be operational. This project is part of a larger strategy to replace the Hall of Justice, established in the City’s 10-Year Capital Plan as the Justice Facilities Improvement Program (JFIP).

The Hunters Point Shipyard is being transferred from the U.S. Navy to the City. The City plans to develop the Shipyard as a residential area. The area in which Building 606 is located is planned to be public open space as an amenity for nearby residences. Prior to the transfer of the property, the Navy is obligated to remove and mitigate hazardous materials in the soil.

Project Status:

Clark Construction was selected to be the Construction Manager/General Contractor (CM/GC) through a competitive solicitation in July 2017. Clark led a team of “Core Trade Subcontractors,” specifically: C/S Erectors for the exterior building envelope, Southland Industries for mechanical and plumbing, and Rosendin Electric for electrical. Temporary Certificate of Occupancy (TCO) was granted on July 22, 2021, Substantial Completion was issued on August 27, 2021, 25 days ahead of schedule and DBI issued the Certificate of Final Completion and Occupancy (CFCO) on January 6, 2022. SFAC public art installation is currently anticipated to occur in Fall of 2023 due to fabricator delays.

The project was obligated to achieve LEED Gold certification which was confirmed in July 2022. Final payment to both Clark Construction and HOK Architects was made in December 2022. Project is currently in the closeout phase. Initial project savings of \$4.4M has been transferred to the Neighborhood Fire Stations bond component and any additional project savings will be transferred to the Police Facilities bond component in early FY2024.

Schedule:

- Pre-Construction Services NTP November 27, 2017
- Pre-Construction Services Full Team Kick-off Meeting November 30, 2017
- Indicator Pile Program construction Services NTP August 19, 2019
- New building construction Services NTP October 7, 2019
- Steel Topping-Out Ceremony April 3, 2020
- Temporary Certificate of Occupancy (TCO) July 2021
- Substantial Completion August 27, 2021
- Certificate of Final Completion and Occupancy (DBI CFCO) January 6, 2022
- Crime Lab Phase Move-In Jan 14 & Feb 18, 2022

Earthquake Safety and Emergency Response Bond Program (ESER 2010, 2014 & 2020)

Police Facilities (ESER 2014)

Component Description: The project includes various focused scope projects at 12 police facilities (9 district stations and 3 support facilities – Southern Station is new, built within the Public Safety Building) across the City. The work scopes are derived from a series of onsite investigations, observations, and professional evaluations of different building systems that include mechanical, electrical, plumbing, fire protection, and structural safety. It also includes assessments of building envelope (i.e., integrity of roof, doors, windows, and walls), ADA accessibility requirements, as well as other site improvements that ensure safety and security.

The component's overall current budget is \$26.8M. The cost to address all police facilities' issues is far in excess. Project priorities are according to building deficiencies that potentially compromise police staff and the public's health and safety, and others that pertain to code compliance.

ADA Packages 1 and 2 – 10 Facilities – Complete

Work to address accessibility issues at ten (10) facilities (Central, Mission, Bayview, Northern, Tenderloin, Park, Ingleside, Taraval, Richmond, and Police Academy) is complete.

Firearms Simulator Training Facility at Lake Merced – Complete

Northern, Richmond, and Taraval Station Renovation Project

Substantial Completion was achieved as anticipated on May 5, 2020. Final Completion was issued on March 26, 2021. Project is completed.

Park and Ingleside Station Renovation

Substantial completion achieved on February 19, 2020. Final Completion issued on March 3, 2021. Project is completed.

MEP Package 2 at Bayview and Tenderloin Station

Substantial Completion achieved on March 3, 2021. Close-out documents have been submitted and the construction contractor final payment was issued on June 27, 2023. Project is completed.

Police Academy Renovation

This project has been postponed due to the unavailability of funding.

Mission Station Renovation

This project is advancing under ESER 2020.

Earthquake Safety and Emergency Response Bond Program (ESER 2010, 2014 & 2020)

Police Facilities (ESER 2020)

Component Description:

The City's growth in recent years has directly impacted the volume of calls for service and response times. The San Francisco Police Department continuously seeks to align its staffing needs to meet the City's growth and changing needs. These changes present a challenge to the Police Department's district stations and support facilities, as they were built – several nearly 100 years ago- for a smaller police force and the facilities lack adequate space for the current staffing levels. Like the Neighborhood Fire Station program, ESER-funded Police projects are carefully selected based on the operational and tactical priorities of police stations and support facilities, to always ensure the effective deployment of first responders, and especially in the event of a major earthquake or other disaster.

Project Status:

Ingleside District Police Station Replacement

Background: The Ingleside District Police Station is located at 1 Sgt. John V. Young Lane, within Balboa Park, a property owned and maintained by the San Francisco Recreation & Park Department. The station serves an area from Cesar Chavez Avenue, between Highway 101 and Faxon Avenue, to the San Mateo County line. The existing station was built in 1910 and is a local historic resource within the Balboa Park Historic District. The station includes a main building and a second building separated by a courtyard. The station's parking lot surrounds the buildings. A major renovation to the station was completed in 1991 and more recent improvements, including critically important upgrades to the mechanical system and the replacement of the emergency generator were completed in 2020.

This first responder facility is considered an Essential Services Building, which means it needs to remain in operation after a major earthquake. Recent analysis has determined that Ingleside Station does not meet the performance criteria for Immediate Occupancy or Life Safety. In addition, the station and adjoining park area will likely become a major evacuation center for this area of the City during a major emergency. The 100-year-old station does not support the Police Department's mission in the Ingleside area. Ingleside Station suffers functional, space and security deficiencies that impede operational efficiency and its vulnerability to a major seismic event would compromise the station's ability to perform its mission in that event.

SFPD's staffing and facility requirements will be impacted by growth in this district. A significant amount of new development is planned within the Ingleside District Station boundaries, so a sizeable increase in the number of residents is expected in this district over the next 20 years. The inefficiencies at Ingleside Station will require its complete replacement to meet Essential Services Building, modern policing requirements and

Earthquake Safety and Emergency Response Bond Program (ESER 2010, 2014 & 2020)

expected growth. Priorities for improvements in the new facility include seismic design to meet Essential Services Building criteria, updating to current policing programmatic needs, site security and expansion options to meet expected growth for the next 50 years.

Project Status: At the behest of the elected district supervisor, the project team studied alternate design concepts – which include the rehabilitation of the existing building and construction a new three-story building at the site across the parking lot. Cost estimate from the 100% schematic design informed that the estimated cost to complete exceeds the available budget allocated to this project. SFPD and Public Works are working on value engineering the project to seek budget alignment. Through a competitive Request for Qualifications (RFQ) and Request for Proposals (RFP) process, a CM/GC was selected in February 2023. Award of contract will require Public Works Commission approval. Design and permitting is anticipated to occur through June 2024, and construction commencing Spring 2025.

Police Surge Facility Construction

Background: The Police Department needs a *Surge Facility* as a temporary base to accommodate essential operations while the Ingleside District Police Station Replacement Project is under construction. The options for such a facility were either the allowed use of an appropriate City-owned building or the construction of a modular facility at an appropriate City parcel. The building option emerged as the most practicable approach and will require tenant improvements to accommodate the essential police operations at the City-owned facility under SFPD jurisdiction, located at 1828 Egbert Avenue. One of the key objectives of this project is to maximize the opportunity to repurpose the installation for permanent future use by the client department.

Project Status: Planning, design & permitting is anticipated to complete December 2023 and construction beginning March 2024. Based on cost estimates received in response to the conceptual design, extensive value engineering will be required to realign the anticipated cost to budget. The CM/GC selected for the Ingleside District Police Station Replacement will also be performing construction services for the SFPD Surge Facility Construction.

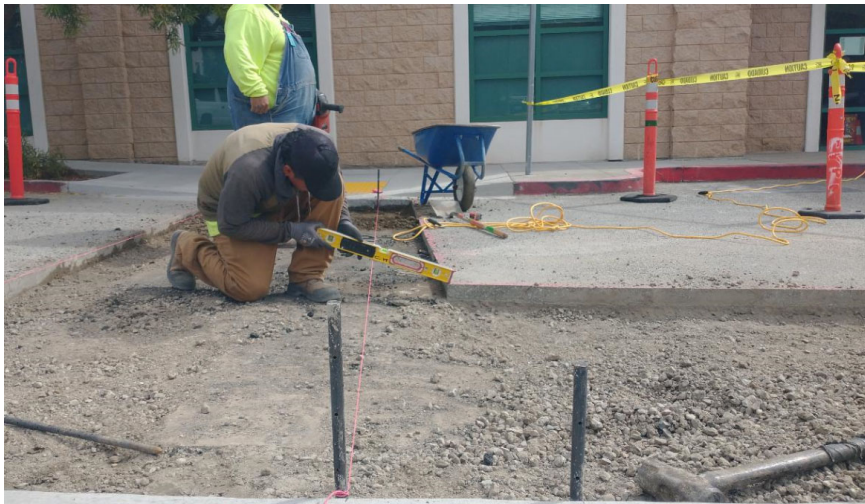
Mission District Police Station Structural Improvement

Background: Located on Valencia Street, Mission District Police Station is a rectangular two story, steel-framed building with exterior walls constructed using reinforced concrete masonry units. It was built in 1993 under the 1991 San Francisco building code (UBC model code) as type ii-n (non-rated) construction. The proposed scope of work is a voluntary seismic strengthening of four existing beams located on the exterior of the building. New

Earthquake Safety and Emergency Response Bond Program (ESER 2010, 2014 & 2020)

steel members will strengthen these four existing exterior beams by bracing them to interior beams. Architectural work includes replacement of the men's shower room and finishes, ceilings, and precast headers at four existing entry locations as required to accommodate structural work. The project will also consist of accessibility upgrades in the police fleet parking area and modifications at the existing restrooms. The station is expected to maintain its normal 24 hours a day, 365 days a year operation throughout construction, with temporary re-routing of employee circulation and egress. Entry to the public lobby will be maintained throughout construction.

Project Status: Construction began August 24, 2022 and is expected to complete in August 2023.



Mission District Police Station

Earthquake Safety and Emergency Response Bond Program (ESER 2010, 2014 & 2020)

Disaster Response Facilities (“Kezar Pavilion”; ESER 2020)

Component Description: After a major earthquake or other disaster, the City will rely on select public buildings to deploy aid, provide shelter and coordinate emergency response and recovery. During and after a major disaster, these public buildings must have the capacity to function as disaster-response facilities that could serve as:

- Shelter: an existing facility, such as a school, recreation center, community center or convention center, temporarily converted to provide safe, accessible, and secure short-term housing for disaster survivors.
- Local Assistance Center: a site where individuals, families, and businesses can access available disaster assistance programs and services
- Commodity Point of Distribution: an accessible site where the public can pick up emergency supplies following a disaster
- Unified Command Post: a field location that can accommodate the primary functions of incident command: command, operations, planning, logistics and finance and administration
- Logistics Staging Area: provides a waystation for incoming shipments that meet a large array of resource request from local government
- Base Camp/Mutual Aid Staging: a location for local and mutual aid organizations to gather prior to deployment

Background:

Kezar Pavilion will be completely renovated using 2020 ESER Bond funding to support some of San Francisco’s most critical needs during emergency response. Its size, location in Golden Gate Park adjacent to Kezar Stadium and related parking lots offers the best venue to dedicate the \$70 million available to upgrade a city-owned facility for post-disaster response. While Kezar will serve as a Recreation and Park facility in non-disaster time, it will be designed to function within a seismically safe facility to serve multiple disaster-response functions.

The San Francisco Emergency Operations Center will dictate the activation of the space at Kezar based on the highest needs of the incident. All emergency operations located at the rebuilt Kezar facility will be safe, secure, and accessible, and will include emergency power and communications connectivity. The new design focuses on two specific potential emergency uses: a public safety staging area and an indoor congregate shelter.

A public safety staging area will provide space for mutual aid from outside jurisdictions to gather and set up their personnel and equipment prior to deploying to impacted areas of

Earthquake Safety and Emergency Response Bond Program (ESER 2010, 2014 & 2020)

San Francisco. Mutual aid may be requested to support public safety including but not limited to medical, fire, or law enforcement response; critical infrastructure assessment or restoration; heavy equipment logistical support; and human and social services. Activation of a public safety staging area at Kezar would include co-location and deployment of heavy equipment like fire engines and trucks, law enforcement response vehicles, utility trucks, and other necessary mutual aid personnel and equipment.

An indoor congregate shelter will provide space for those displaced by the emergency to receive necessary temporary shelter and basic necessities, such as food, water, medical supplies, and survival gear. The shelter will include flexible space that can accommodate individuals, families, and pets as necessary, and is being designed to accommodate between 100 and 150 individuals at a time. Activation of an indoor congregate shelter at Kezar may also include the capacity for additional distribution of essential commodities to those in need who are not residing in the shelter.

Kezar Pavilion will be the sole project for the Disaster Response Facilities component of the ESER 2020 bond. The cost of upgrading the Pavilion and expanding the facility will require the entire amount allocated for this bond component and will require supplemental funding from the RPD Department

Project Status:

The project team is currently revising the the concept design to create more program space by lowering the gym floor. The revised design will improve circulation in the building by aligning the annex basement with the court level and provide much need space for building systems and storage beneath the gym bleachers. The project team is continuing to coordinate closely with RPD, DEM and HSA staff to ensure all relevant City Department's needs are being met. On-going site investigation work includes hazardous materials abatement to facilitate destructive material testing for assessing structural integrity of the building's exterior walls. Additional geotechnical investigation work is completed, and the project team is awaiting issuance of the final report. The project has also undergone an initial historic resource evaluation (phase 1) which has been reviewed by the historic preservation division at the Planning Department. Their initial feedback has been favorable regarding the CEQA approval process. A historic resource consultant recently concluded their assessment of the building's windows and has made recommendations on which windows are salvageable and which should be replaced. We are concluding a cost estimate reconciliation process that is expected to be complete by July 2023. We are planning to advertise a CM/GC contract for this project. The draft RFP/Q solicitation is under review by the City attorney. Following the cost reconciliation process and updates to the concept design, the project team will initiate a formal public engagement process to

Earthquake Safety and Emergency Response Bond Program (ESER 2010, 2014 & 2020)

review the design followed by further plan development. The public process will be followed by sharing the project with the Civic Design Review Committee for their feedback.



9-1-1 Call Center (ESER 2020)

Component Description: The 9-1-1 Call Center is operated and managed by the Department of Emergency Management. It is located at the City’s Emergency Operations Center (EOC) at 1011 Turk Street in the Western Addition neighborhood and houses public safety dispatchers who answer all calls made to 9-1-1. These dispatchers are the initial point of contact for all of San Francisco’s first responders, 24 hours a day. They serve the communications hub that dispatches first responders to the scene of accidents, crimes, fires and other emergency and non-emergency situations.

San Francisco’s 9-1-1 Dispatch Center is one of the top 25 busiest 9-1-1 centers in the United States and receives an average of 3,700 calls each day. It is critical that our Dispatch Center can answer all calls for emergency and non-emergency service quickly.

The 9-1-1 Call Center component collected \$8.9M in the first issuance for planning, design, bid process, and construction. Based on the preliminary project schedule, planning, design,

Earthquake Safety and Emergency Response Bond Program (ESER 2010, 2014 & 2020)

and permit activities are expected to last through March 2022, and construction from July 2022 through July 2023.

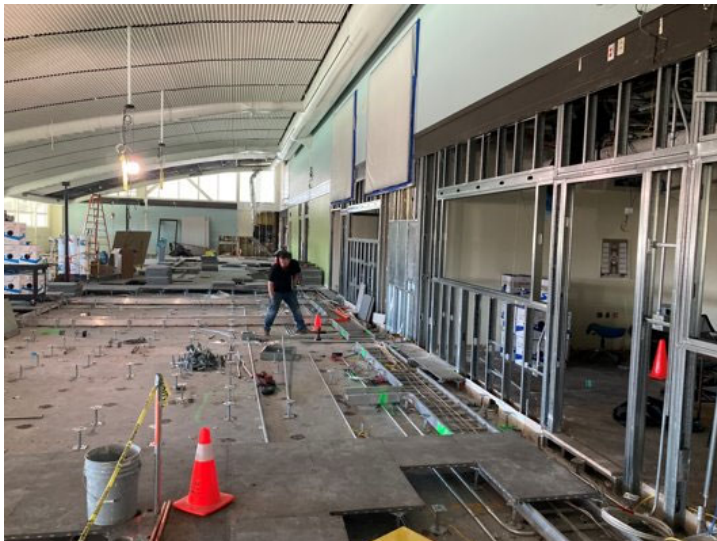
Background: The existing City Emergency Operations Center (EOC) at 1011 Turk Street was constructed in 1997 and consists of a two-story building housing the emergency operations center, the 9-1-1 Call Center, a data center for emergency communications, administrative offices, meeting rooms and support space.

The renovation of the 9-1-1 Call Center will increase the number of dispatcher workstations and reconfigure the supervisor bridge for better visual oversight of all the dispatchers.

Space requirements were determined by analyzing space needs for normal operations, projected growth, redundancy needed for reliable 9-1-1 functioning and capacity for high-demand events – both planned and unplanned. Workstations have specific size and layout requirements for dispatchers to work effectively and efficiently during both routine operations and large-scale emergencies.

Project Status:

The project is under construction, Buhler Commercial is the General Contractor. The GC mobilized in February 2023, Phase 1 of the project was substantially completed in May 2023; Phase 2 is underway and anticipates substantial completion in November 2023.



911 Call Center at City's Emergency Operations Center

Earthquake Safety and Emergency Response Bond Program (ESER 2010, 2014 & 2020)

Budget, Funding and Expenditures

ESER 2010

The bond authorization amount for the ESER 2010 Bond Program is \$412,300,000. The total appropriation is \$416,758,554 which includes partial interest earned thru FY2017 and bond financing costs. ESER 2010 accrued interest of \$2.3M is expected to be appropriated in Q1 FY24.

The following is a summary of the budget and appropriation per component:

ESER 2010: thru June 2023

Bond Components and Projects	Bond Authorized Amount	Adjusted Budget (ii)	Appropriations	Expenditures	Encumbrances	Balances	Expenditures/ Appropriations
Public Safety Building (PSB)	239,000,000	229,379,359	229,379,359	229,228,061	0	151,298	100%
Neighborhood Fire Stations (NFS)	64,000,000	80,941,986	80,941,986	76,743,696	183,946	4,014,344	95%
Auxiliary Water Supply System (AWSS)	102,400,000	102,400,001	102,400,001	102,202,826	197,175	0	100%
Oversight, Accountability & Cost of Issuance (iii)	6,900,000	3,931,489	3,931,489	3,509,402	0	422,087	89%
Public Works Program Reserve		105,719	105,719	0	0	105,719	0%
TOTAL (i)	412,300,000	416,758,554	416,758,554	411,683,985	381,121	4,693,448	99%

(i) Financial data as of 7/19/2023

(ii) Budgets per PeopleSoft appropriations

(iii) Includes underwriter fees \$1.38M, paid prior to depositing bond proceeds

Expenditures and Encumbrances

The ESER 2010 expenditures and encumbrances are \$411,683,985 and \$381,121 respectively. Expenditures represent 99% of the total current appropriations.

The Accountability reports for the second thru sixth bond sales are available on the ESER website at <https://sfpublicworks.org/eser-bond-reports>.

Earthquake Safety and Emergency Response Bond Program (ESER 2010, 2014 & 2020)

ESER 2014

The ESER 2014 bond authorization amount and total appropriation is \$400,000,000, inclusive of the bond financing costs. ESER 2014 accrued interest of \$12M is expected to be appropriated in Q1 FY24.

The following is a summary of the budget and appropriation per component:

ESER 2014: thru June 2023

Bond Components and Projects	Bond Authorized Amount	Adjusted Budget (ii)	Appropriations	Expenditures	Encumbrances	Balances	Expenditures/ Appropriations
Office of the Chief Medical Examiner (OCME)	63,895,000	67,533,024	67,533,024	67,470,731	0	62,293	100%
Traffic Company & Forensic Services Division (TCFSD)	162,195,000	174,495,790	174,495,790	171,276,889	214,650	3,004,251	98%
Police Facilities (PF)	29,490,000	26,845,661	26,845,661	26,031,590	0	814,071	97%
Neighborhood Fire Station (NFS)	83,555,000	72,030,741	72,030,741	63,365,121	577,367	8,088,253	88%
Emergency Firefighting Water System (EFWS)	54,065,000	54,347,209	54,347,209	51,011,813	1,561,915	1,773,481	94%
Oversight, Accountability & Cost of Issuance (iii)	6,800,000	4,296,388	4,296,388	3,689,931	0	606,458	86%
Public Works Program Reserve		451,187	451,188	0	0	451,188	0%
TOTAL (i)	400,000,000	400,000,000	400,000,000	382,846,075	2,353,932	14,799,993	96%

(i) Financial data as of 7/19/2023

(ii) Budgets per PeopleSoft appropriations; \$4.4M transfer from TCFSD (partial project savings) to NFS occurred in Q4 FY23

(iii) Includes manual addition \$2M to account for Underwriter Fee, paid prior to depositing bond proceeds

Expenditures and Encumbrances

The ESER 2014 expenditures and encumbrances are \$382,846,075 and \$2,353,932 respectively. The expenditures represent 96% of the total current appropriations.

The Accountability reports for the second and third bond sales are available on the ESER website at <https://sfpublicworks.org/eser-bond-reports>.

Earthquake Safety and Emergency Response Bond Program

(ESER 2010, 2014 & 2020)

ESER 2020

The ESER 2020 bond authorization amount is \$628,500,000 and the total appropriation is \$167,805,000, inclusive of bond financing costs, funded by the two bond sales issued to date.

The following is a summary of the budget and appropriation per component:

ESER 2020: thru June 2023

Bond Components and Projects	Bond Authorized Amount	Adjusted Budget (ii)	Appropriations	Expenditures	Encumbrances	Balances	Expenditures/ Appropriations
Emergency Firefighting Water System	153,500,000	151,170,852	35,000,000	12,932,854	7,361,682	14,705,464	37%
Neighborhood Fire Stations & Support Facilities	275,000,000	270,827,260	74,416,188	42,446,328	536,657	31,433,203	57%
District Police Stations & Support Facilities	121,000,000	119,163,994	32,022,200	7,226,858	553,687	24,241,655	23%
Disaster Response Facilities (Kezar Pavilion)	70,000,000	68,937,848	15,855,705	1,812,524	522,270	13,520,911	11%
9-1-1 Response Facilities	9,000,000	8,863,438	8,863,438	3,654,565	2,671,096	2,537,777	41%
Oversight, Accountability & Cost of Issuance (iii)		9,536,608	1,647,469	1,101,091	0	546,378	67%
TOTAL (i)	628,500,000	628,500,000	167,805,000	69,174,219	11,645,392	86,985,388	41%

(i) Financial data as of 7/19/2023

(ii) Current forecasted budget per bond component

(iii) Includes manual addition \$329K to account for Underwriter Fee, paid prior to depositing bond proceeds

Expenditures and Encumbrances

The ESER 2020 expenditures and encumbrances are \$69,174,219 and \$11,645,932 respectively. The expenditures represent 41% of the total current appropriations.

The Accountability reports for the first and second bond sales are available on the ESER website at <https://sfpublicworks.org/eser-bond-reports>.

Attachments

Attachment 1 – Contact Information



San Francisco Public Works | City and County of San Francisco | Building Design and Construction | Project Management
49 South Van Ness Avenue, Suite 1000 | San Francisco, CA 94103 | (415) 557-4700 | sfpublicworks.org

Contact	Title	Component	Telephone No.	E-mail
Charles Higuera	Program Manager	ESER 2010, 2014 & 2020	(628) 271-2796	charles.higuera@sfdpw.org
Magdalena Ryor	Project Manager	ESER 2010 NFS; ESER 2014 OCME, NFS, PF	(628) 271-2758	magdalena.ryor@sfdpw.org
Michael Rossetto	Project Manager	ESER 2014 TC/FSD; ESER 2010 & 2014 NFS Focused Scope	(628) 271-2773	michael.rossetto@sfdpw.org
Lisa Zhuo	Project Manager	ESER 2014 PF; ESER 2020 9-1-1 Call Center	(628) 271-2777	lisa.zhuo@sfdpw.org
Sherry Katz	Project Manager	ESER 2010 & 2014 NFS Focused Scope	(628) 271-2759	sherry.katz@sfdpw.org
Samuel Chui	Project Manager	ESER 2010 PSB; ESER 2020 PF	(628) 271-2760	samuel.chui@sfdpw.org
Allison Chan	Project Mgr. Asst.	ESER 2010, 2014, & 2020	(628) 271-2565	allison.n.chan@sfdpw.org
Kelly Griffin	Financial Analyst	ESER 2010, 2014, & 2020	(628) 271-2800	kelly.griffin@sfdpw.org



Public Utilities Commission
525 Golden Gate Avenue, 9th Floor | San Francisco, CA 94102

Contact	Title	Component	Telephone No.	E-mail
Ada Zhu	Project Manager	ESER 2010 AWSS; ESER 2014 & 2020 EFWS	(415) 554-3415	azhu@sfgwater.org



San Francisco Recreation & Parks
49 South Van Ness Avenue, Suite 1200 | San Francisco, CA 94103

Contact	Title	Component	Telephone No.	E-mail
Dan Mauer	Project Manager	ESER 2020 Disaster Response Facilities	(628) 652-6630	dan.mauer@sfgov.org
Alexis Ward	Project Manager	ESER 2020 Disaster Response Facilities	(628) 652-6641	alexis.ward@sfgov.org

Quarterly Status Report