

Gene Friend Recreation Center

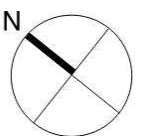
CIVIC DESIGN REVIEW PHASE 2: DESIGN DEVELOPMENT

17 July 2023

1. EXISTING FACILITY
2. PHASE I: CIVIC DESIGN REVIEW
3. PHASE II: DESIGN UPDATE
4. PHASE II: EXTERIOR VIEWS, ELEVATIONS, AND MATERIALS
5. PHASE II: SITE PLAN, VIEWS, MATERIALS AND FURNISHINGS
6. PHASE II: PUBLIC ART INTEGRATION



EXISTING FACILITY: AERIAL PHOTO



EXISTING FACILITY: SITE IMAGES



EXISTING - 6TH STREET ENTRANCE



EXISTING - HARRIET AND FOLSOM STREETS



EXISTING - FOLSOM AND 6TH STREETS

PHASE I CIVIC DESIGN REVIEW: WRNS PROPOSAL



PHASE 1 - 6TH STREET



PHASE 1 - 6TH STREET



PHASE 1 - HARRIET AND FOLSOM STREETS



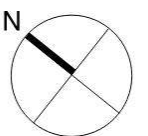
PHASE 1 - 6TH AND FOLSOM STREETS

PHASE 1 CIVIC DESIGN REVIEW:

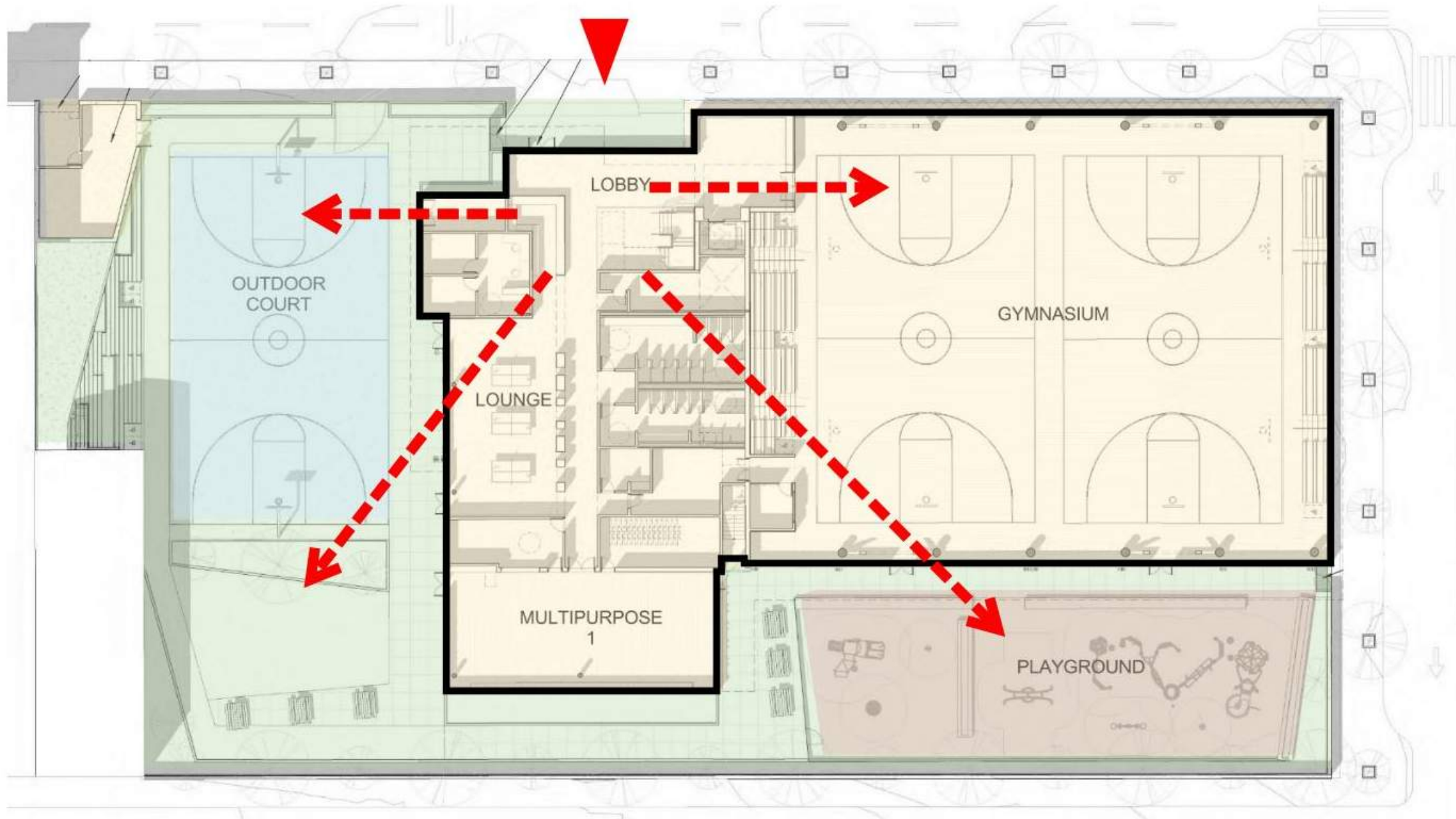
KEY DESIGN ELEMENTS NEEDING RETHINKING

1. Move entry to Harriet Street and relate more directly and safely to Victoria Manalo Draves Park.
2. Clear lines of sight from reception throughout the facility to significantly improve security and operational safety.
3. Make building one story to significantly improve security and operational safety.
4. Consolidate outdoor play area for ease of supervision for both staff and parents.
5. Need to maximize balanced daylight in the gymnasium to avoid glare, heat gain and be more sustainable.

PHASE I CIVIC DESIGN REVIEW: WRNS PROPOSAL - SITE PLAN



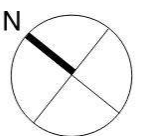
PHASE I CIVIC DESIGN REVIEW: WRNS PROPOSAL - FLOOR PLANS



GROUND FLOOR PLAN: SITE LINES



SECOND FLOOR PLAN



2018 COMMENTS

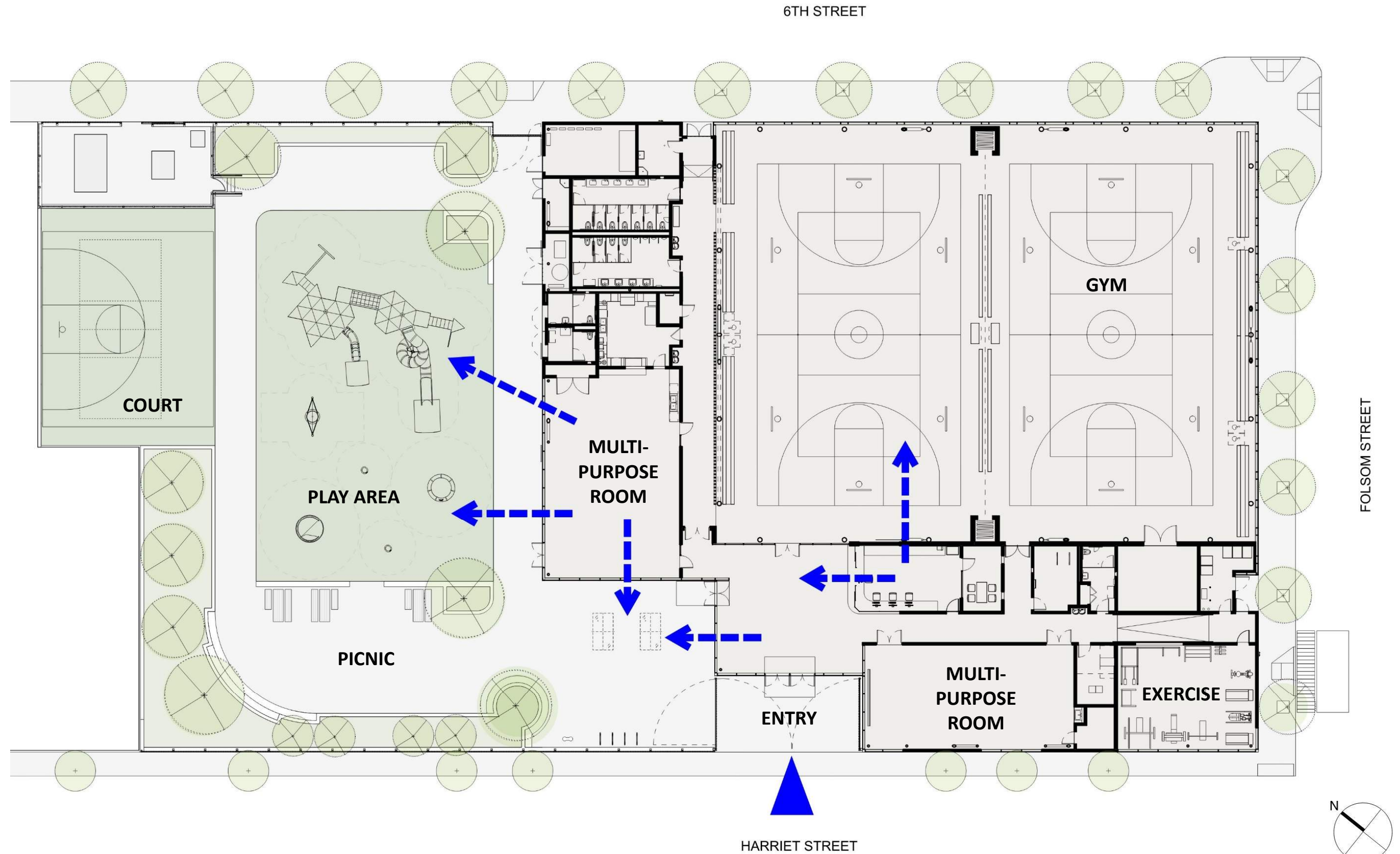
As we explored a new, more functional and secure design, we also explored integrating the following comments from this commission:

1. Explore alternate materials
2. More welcoming entry
3. Study for lighting

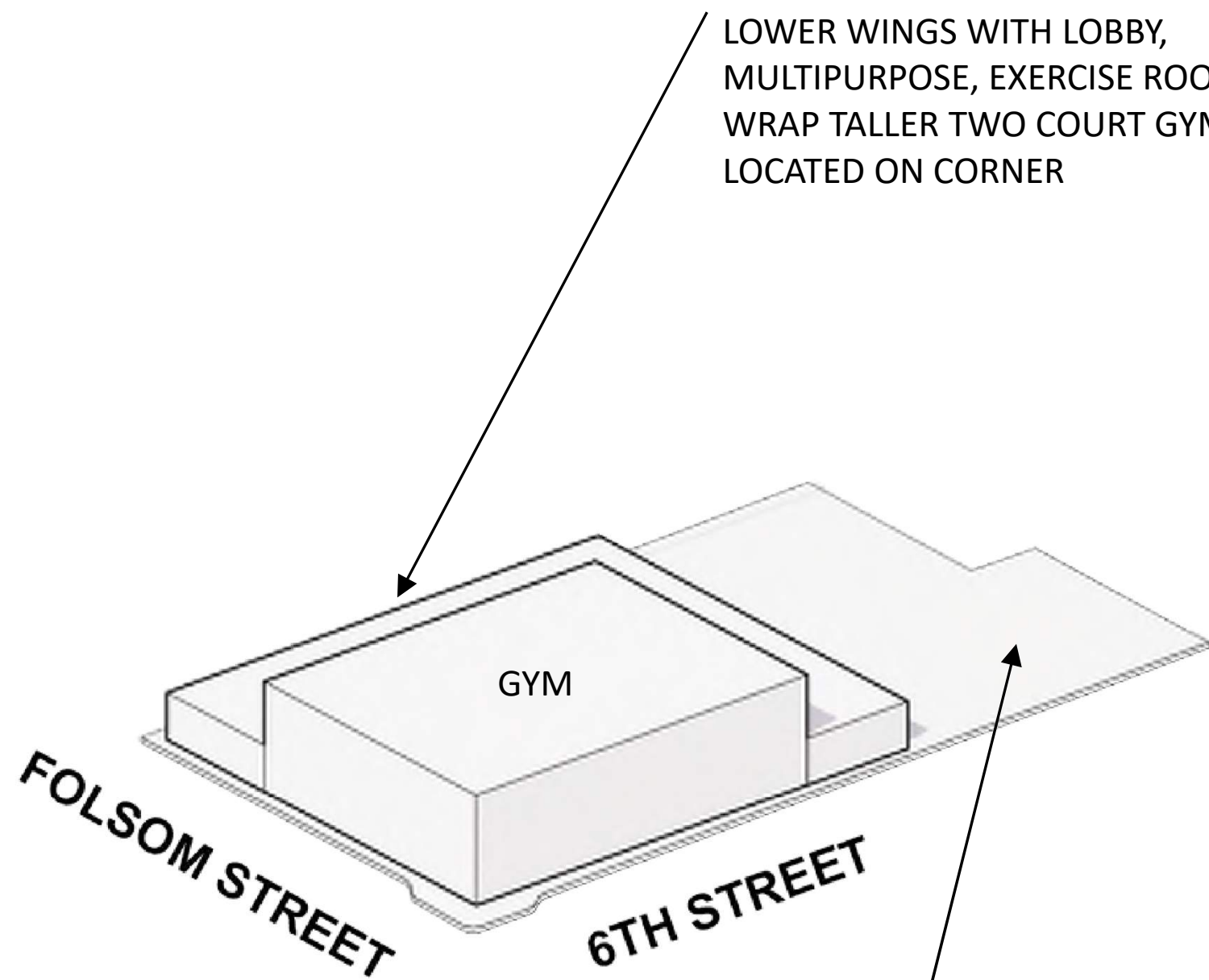
KEY DESIGN ELEMENTS RETAINED & ENHANCED

1. “Lightbox” at 6TH and Folsom Streets to better connect the facility with the surrounding community, with more windows added in the gym to increase light
2. Single point of entry, which has been moved to pedestrian-friendly Harriet St
3. Landscape area has been consolidated to work better as a gathering space supporting day-to-day programming, community festivals, and events
4. Walking loop in the landscape area has been prioritized

PHASE II PROPOSAL: SITE PLAN

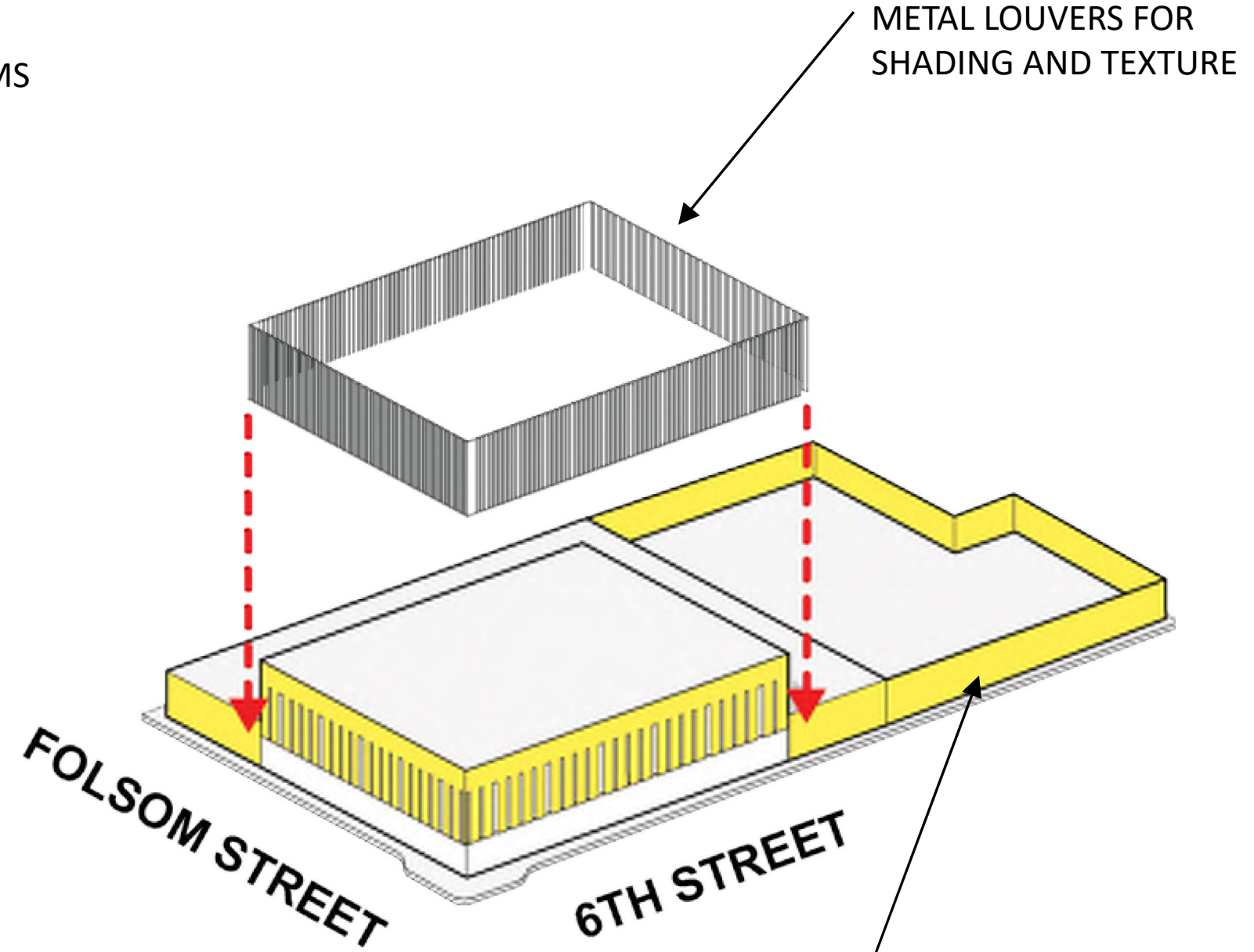


PHASE II PROPOSAL: DESIGN CONCEPT DIAGRAM



LOWER WINGS WITH LOBBY,
MULTIPURPOSE, EXERCISE ROOMS
WRAP TALLER TWO COURT GYM
LOCATED ON CORNER

CONSOLIDATED
OUTDOOR AREA



METAL LOUVERS FOR
SHADING AND TEXTURE

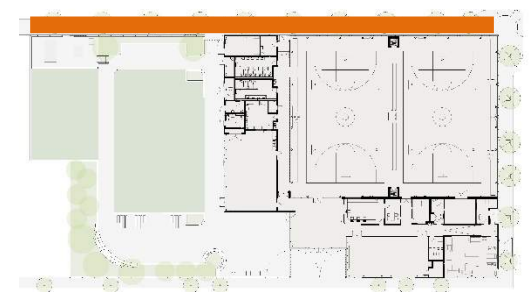
METAL FENCING
SIMILAR TO LOUVERS
FOR CONTINUITY

PHASE II PROPOSAL: ELEVATIONS

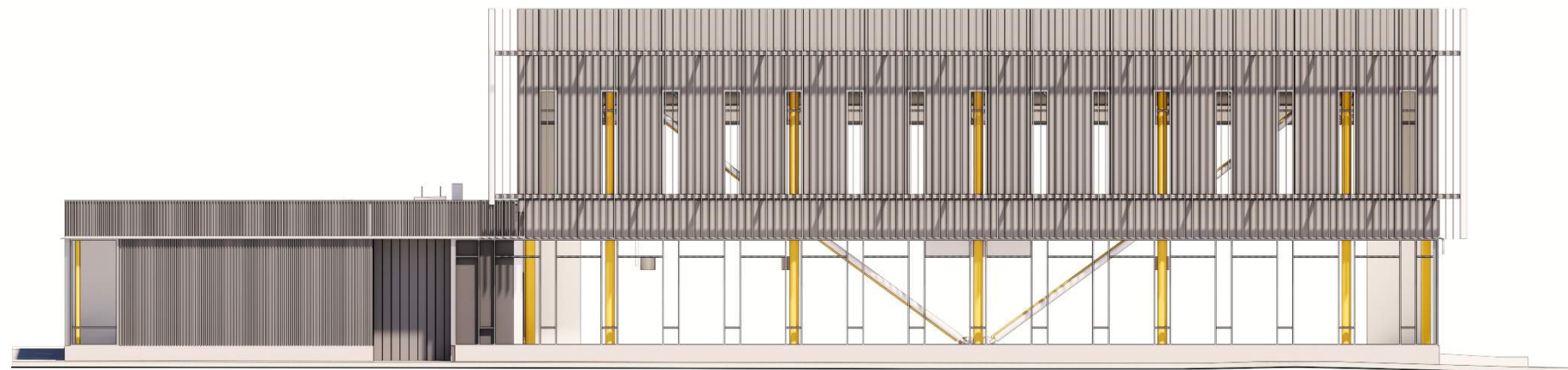


6TH STREET ELEVATION

MARK CAVAGNERO ASSOCIATES | KUTH RANIERI ARCHITECTS - GENE FRIEND RECREATION CENTER

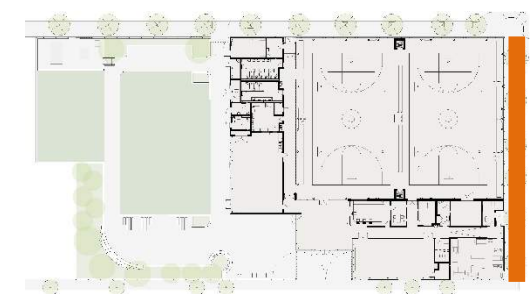


PHASE II PROPOSAL: ELEVATIONS



FOLSOM STREET ELEVATION

MARK CAVAGNERO ASSOCIATES | KUTH RANIERI ARCHITECTS - GENE FRIEND RECREATION CENTER

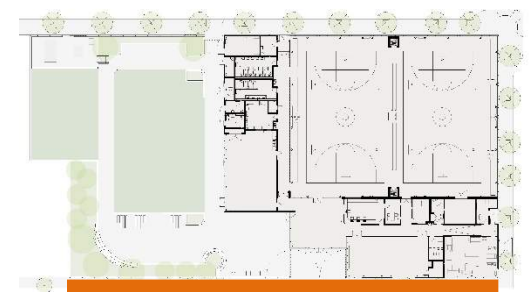


PHASE II PROPOSAL: ELEVATIONS



HARRIET STREET ELEVATION

MARK CAVAGNERO ASSOCIATES | KUTH RANIERI ARCHITECTS - GENE FRIEND RECREATION CENTER





CORNER 6TH AND FOLSOM – GLASS LIGHTBOX IDEA RETAINED

MARK CAVAGNERO ASSOCIATES | KUTH RANIERI ARCHITECTS - GENE FRIEND RECREATION CENTER



INVITING ENTRY NOW ON HARRIET STREET

MARK CAVAGNERO ASSOCIATES | KUTH RANIERI ARCHITECTS - GENE FRIEND RECREATION CENTER



CORNER OF HARRIET AND FOLSOM WITH SAFE PEDESTRIAN CONNECTION TO VICTORIA MANALO DRAVES PARK

MARK CAVAGNERO ASSOCIATES | KUTH RANIERI ARCHITECTS - GENE FRIEND RECREATION CENTER



NEW CONSOLIDATED OUTDOOR PLAY AREA

MARK CAVAGNERO ASSOCIATES | KUTH RANIERI ARCHITECTS - GENE FRIEND RECREATION CENTER



CHILDREN'S PLAY AREA WITH DIRECT VISUAL CONNECTION TO RECEPTION AND MULTIPURPOSE ROOM

MARK CAVAGNERO ASSOCIATES | KUTH RANIERI ARCHITECTS - GENE FRIEND RECREATION CENTER



MULTI PURPOSE ROOM WITH DIRECT VIUSAL CONNECTION TO OUTDOOR PLAY AREA

MARK CAVAGNERO ASSOCIATES | KUTH RANIERI ARCHITECTS - GENE FRIEND RECREATION CENTER

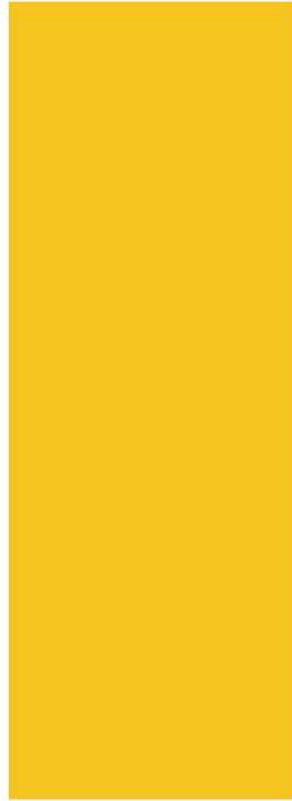


MULTI PURPOSE ROOM WITH DIRECT CONNECTION TO THE COURTYARD AND LOBBY TO SUPPORT COMMUNITY EVENTS

MARK CAVAGNERO ASSOCIATES | KUTH RANIERI ARCHITECTS - GENE FRIEND RECREATION CENTER



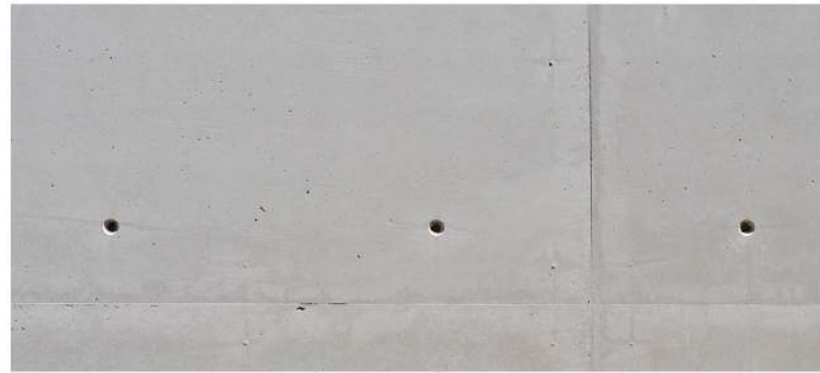
Gymnasium Floor



Structure



Stucco



Concrete



Gradient Frit Glass



Architectural Fins



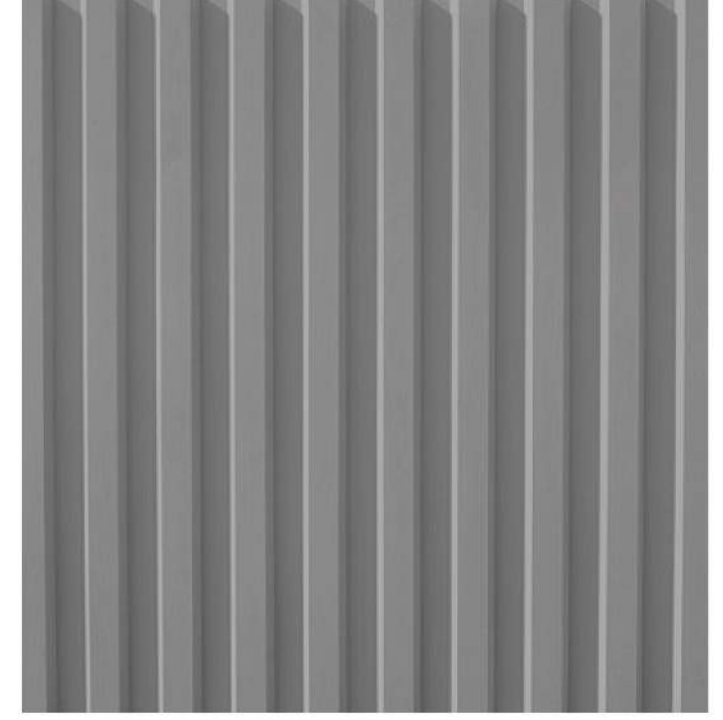
Signage



Starphire Low-Iron Glass



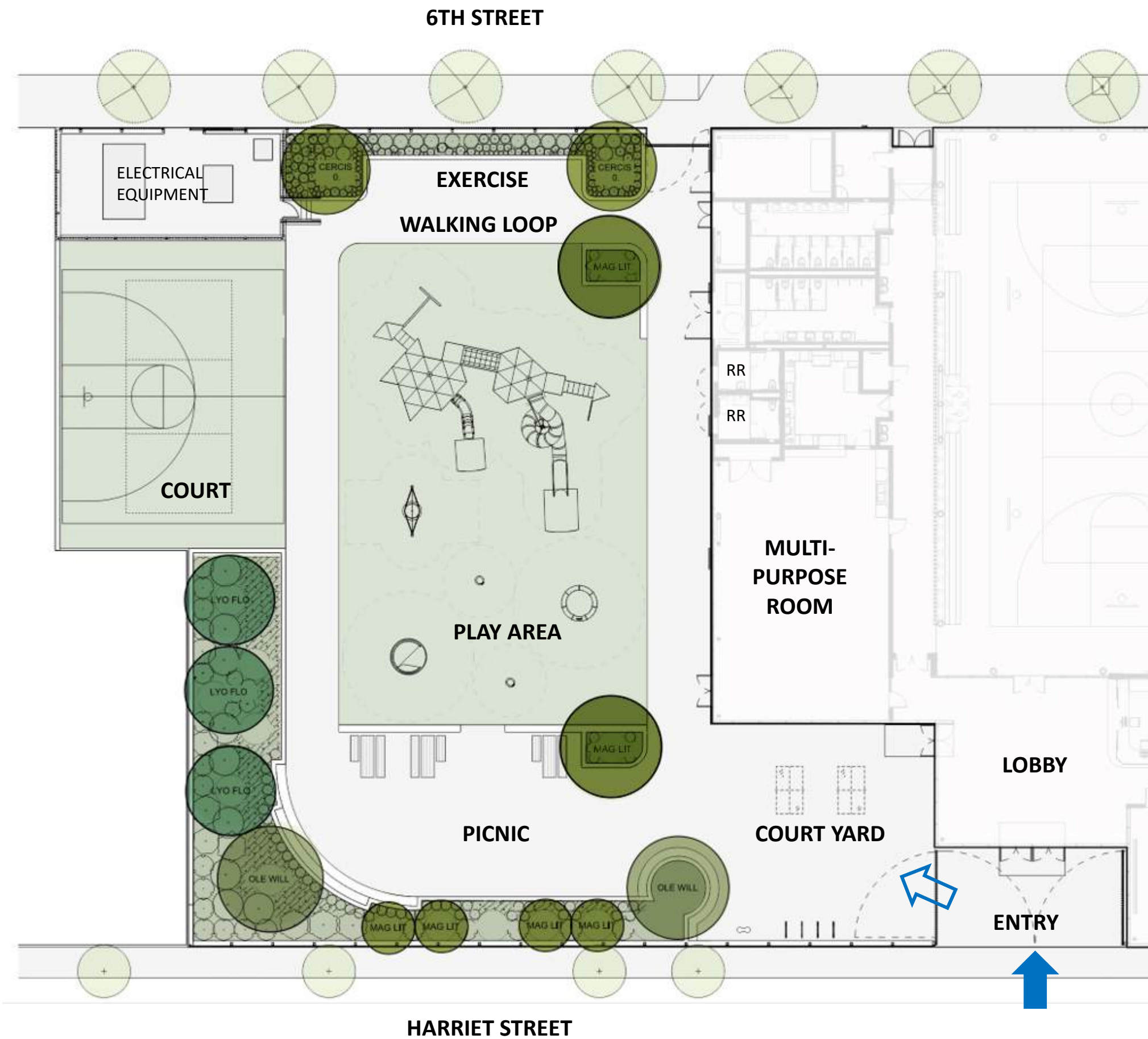
Flat Metal Panel



Corrugated Metal Panel

EXTERIOR MATERIALS AND COLORS

MARK CAVAGNERO ASSOCIATES | KUTH RANIERI ARCHITECTS - GENE FRIEND RECREATION CENTER



LANDSCAPE PLANTING PLAN

MARK CAVAGNERO ASSOCIATES | KUTH RANIERI ARCHITECTS - GENE FRIEND RECREATION CENTER



OLEA EUROPAEA, WILSONII



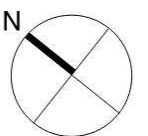
LYONOTHAMNUS FLORIBUNDUS



MAGNOLIA GR., 'LITTLE GEM'



CERCIS OCCIDENTALIS



TREE SCHEDULE

<u>BOTANICAL NAME</u>	<u>COMMON NAME</u>
CERCIS OCCIDENTALIS	WESTERN REDBUD
LYONOTHAMNUS FLORIBUNDUS ASPLENIFOLIUS	FERNLEAF CATALINA IRONWOOD
MAGNOLIA GRANDIFLORA 'LITTLE GEM'	LITTLE GEM DWARF SOUTHERN MAGNOLIA
OLEA EUROPAEA 'WILSONII' SINGLE AND MULTI-TRUNK	WILSON OLIVE

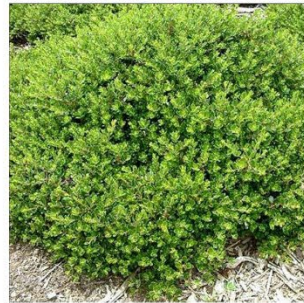
SHRUB/GROUNDCOVER SCHEDULE

<u>BOTANICAL NAME</u>	<u>COMMON NAME</u>
ARCTOSTAPHYLOS X 'EMERALD CARPET'	EMERALD CARPET MANZANITA
ARCTOSTAPHYLOS X 'LUTSKO'S PINK'	LUTSKO'S PINK MANZANITA
ARTEMISIA PYCNOCEPHALA 'DAVID'S CHOICE'	DWARF COASTAL BEACH SAGEWORT
BACCHARIS PILULARIS 'PIGEON POINT'	PIGEON POINT COYOTE BRUSH
BACCHARIS PILULARIS 'TWIN PEAKS'	TWIN PEAKS COYOTE BRUSH
PHLOMIS PURPUREA 'ALBA'	WHITE JERUSALEM SAGE
SALVIA NEMOROSA	WOODLAND SAGE
<u>BOTANICAL NAME</u>	<u>COMMON NAME</u>
FRAGARIA CHILOENSIS 'GREEN PASTURES'	GREEN PASTURES BEACH STRAWBERRY
IRIS DOUGLASIANA 'CANYON SNOW'	DOUGLAS IRIS
ACHILLEA MILLEFOLIUM	COMMON YARROW

FLOW-THROUGH PLANTER SCHEDULE

<u>BOTANICAL NAME</u>	<u>COMMON NAME</u>
DESCHAMPSIA CESPITOSA	TUFTED HAIR GRASS
DIPLACUS AURANTIACUS	STICKY MONKEY FLOWER
JUNCUS PATENS	CALIFORNIA GREY RUSH
SALVIA SPATHACEA	HUMMINGBIRD SAGE

SHRUB



Arctostaphylos
'Emerald Carpet'



Artemisia pycnocephala
'David's Choice'



Baccharis pilularis

GROUNDCOVER



Fragaria chiloensis



Iris douglasiana
'canyon snow'



Achillea millefolium

FLOW-THROUGH PLANTER



Diplacus aurantiacus



Juncus patens



Salvia spathacea



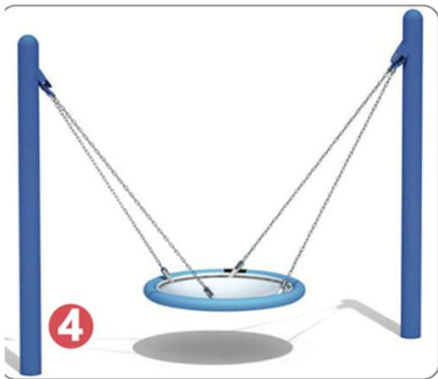
Whirl



Inclusive Whirl



Spinner



Swing



PLAYGROUND EQUIPMENT

MARK CAVAGNERO ASSOCIATES | KUTH RANIERI ARCHITECTS - GENE FRIEND RECREATION CENTER



BALANCE BOARD



TWIST AND FLEX WHEEL

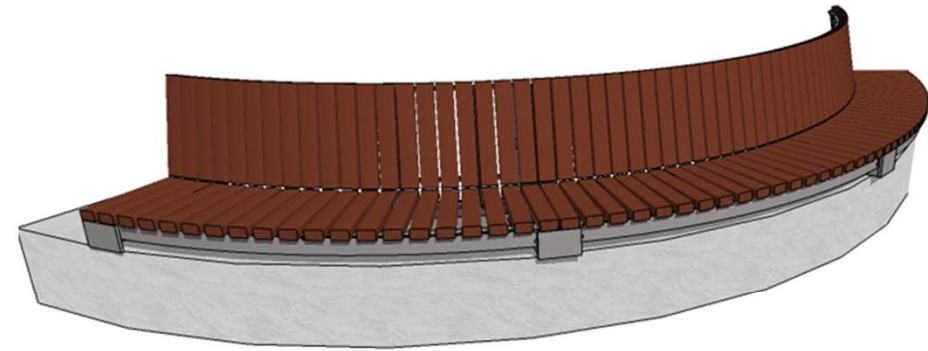
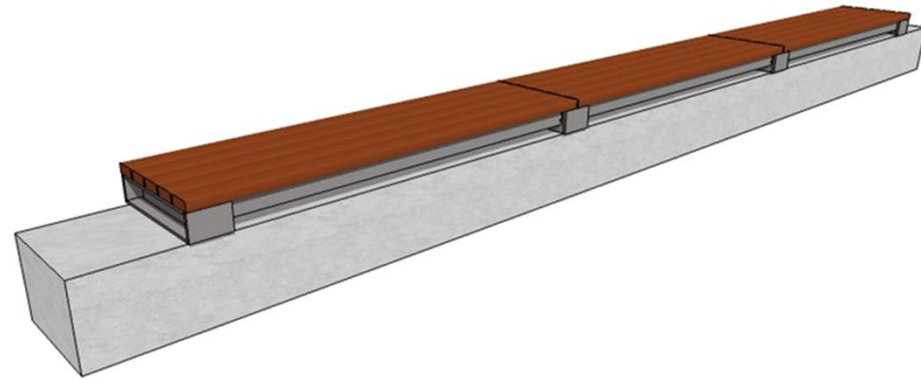


LEG LIFT AND PULL UP

OUTSIDE EXERCISE EQUIPMENT

MARK CAVAGNERO ASSOCIATES | KUTH RANIERI ARCHITECTS - GENE FRIEND RECREATION CENTER

FURNITURE



HARDSCAPE

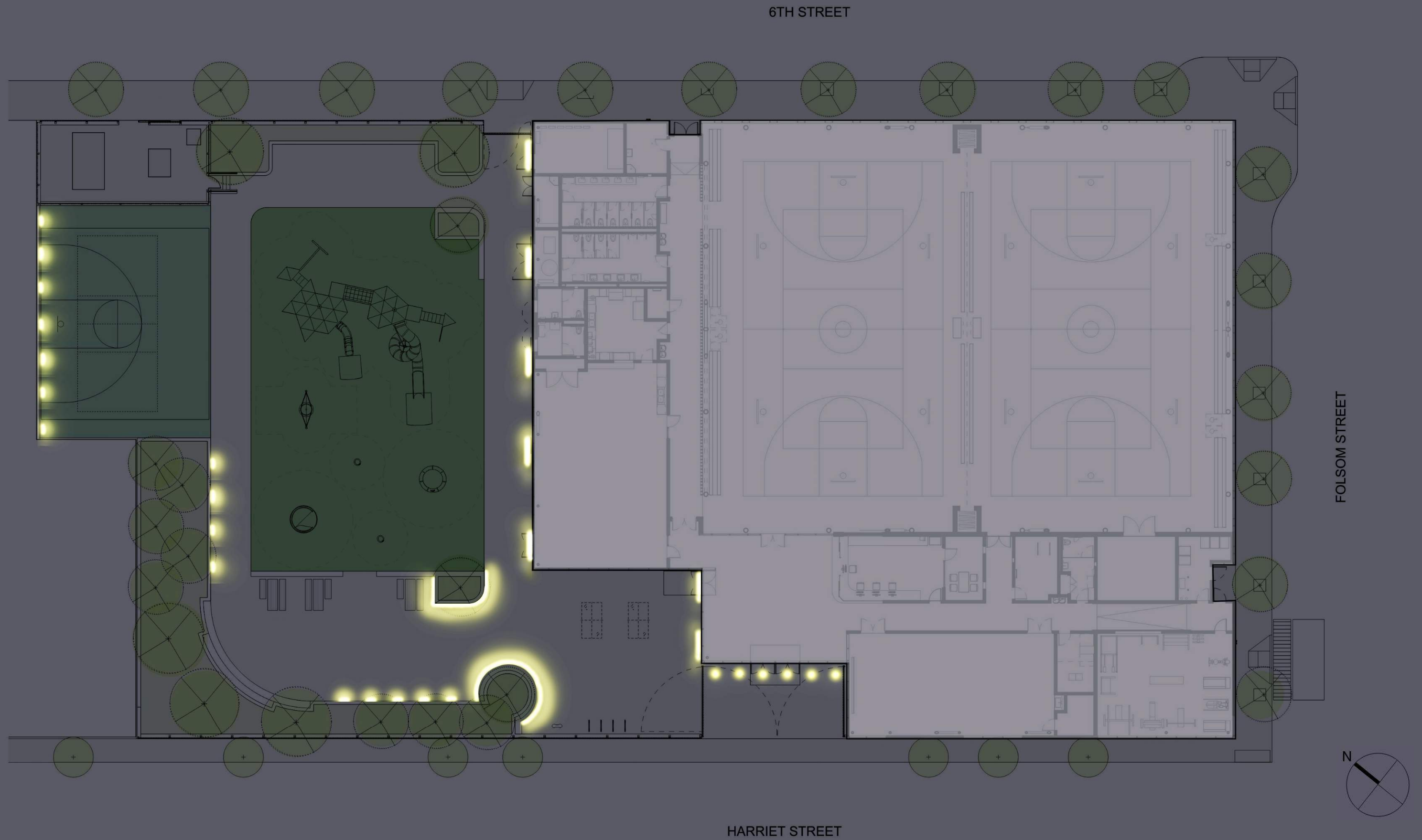


PERVIOUS CONCRETE (PATHWAYS)



LANDSCAPE FURNITURE AND MATERIALS

MARK CAVAGNERO ASSOCIATES | KUTH RANIERI ARCHITECTS - GENE FRIEND RECREATION CENTER



EXTERIOR LIGHTING PLAN

MARK CAVAGNERO ASSOCIATES | KUTH RANIERI ARCHITECTS - GENE FRIEND RECREATION CENTER



GYM INTERIOR WITH PUBLIC ART OPPORTUNITY

MARK CAVAGNERO ASSOCIATES | KUTH RANIERI ARCHITECTS - GENE FRIEND RECREATION CENTER



VIEW OF GYM FROM OUTSIDE, WITH PUBLIC ART OPPORTUNITY

MARK CAVAGNERO ASSOCIATES | KUTH RANIERI ARCHITECTS - GENE FRIEND RECREATION CENTER



NIGHT VIEW : 6TH AND FOLSOM STREETS

MARK CAVAGNERO ASSOCIATES | KUTH RANIERI ARCHITECTS - GENE FRIEND RECREATION CENTER