

Harvey Milk Terminal 1 BAC & T1 Artwork Relocation DRC

April 10, 2023

T1 & BAC Artwork Locations - Departures

PIER

Kaneko

MEET & GREET

Bankston

SF Imagery

NORTH INGLENOOK

Noguchi

Shaw

Stutz

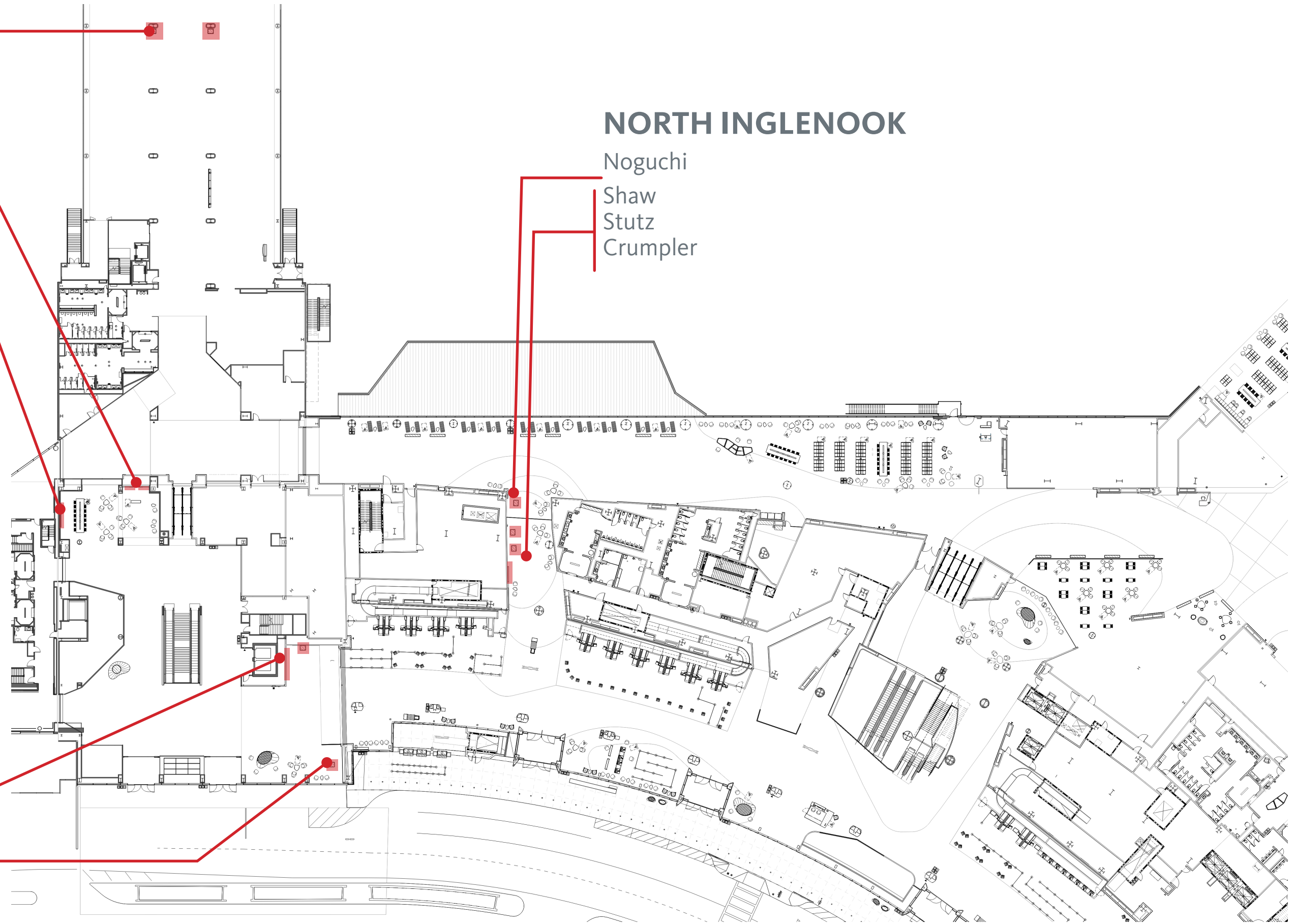
Crumpler

BAC - T1 TRANSITION

Ebtekar

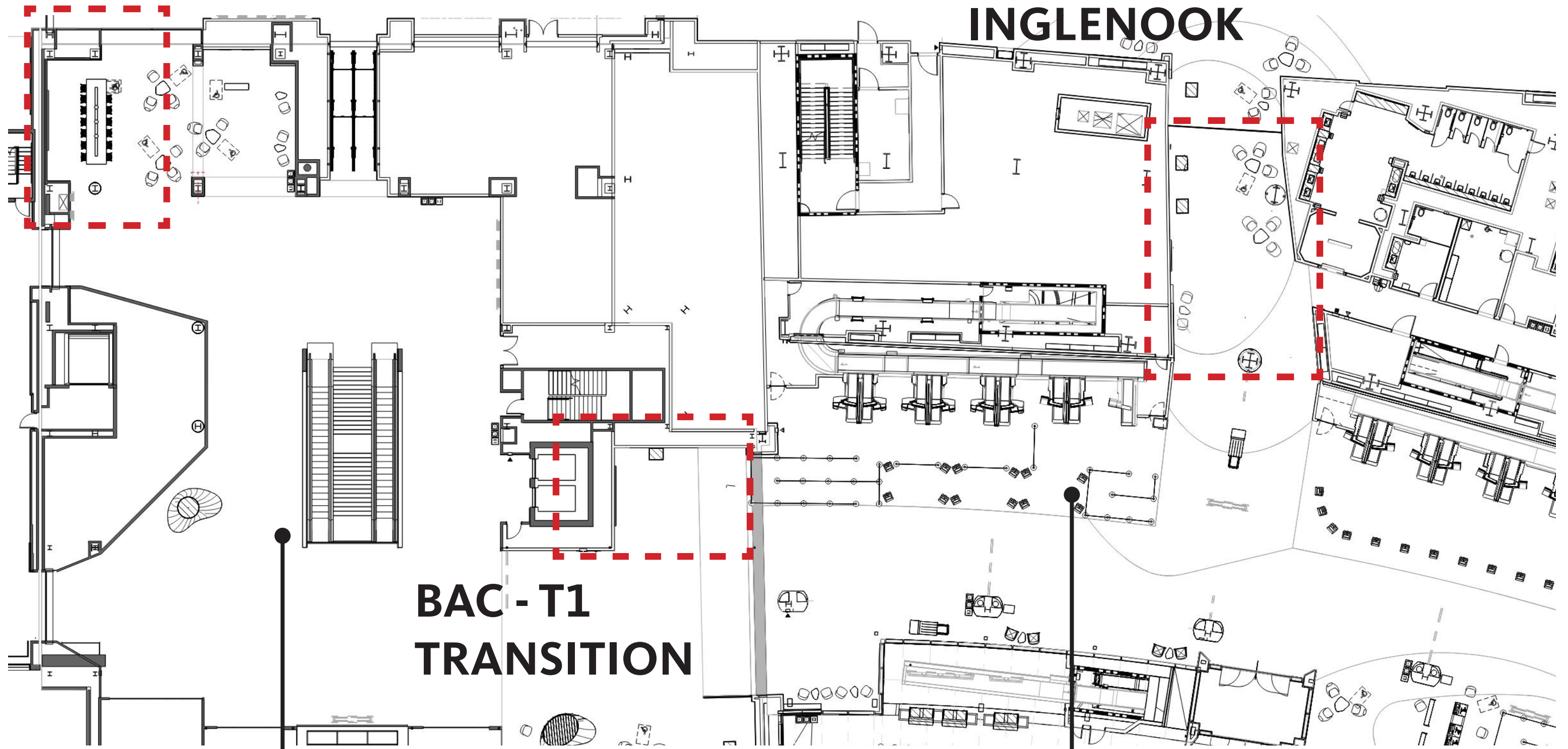
Neri

Zajac



MEET & GREET

NORTH INGLENOOK



BAC - T1 TRANSITION

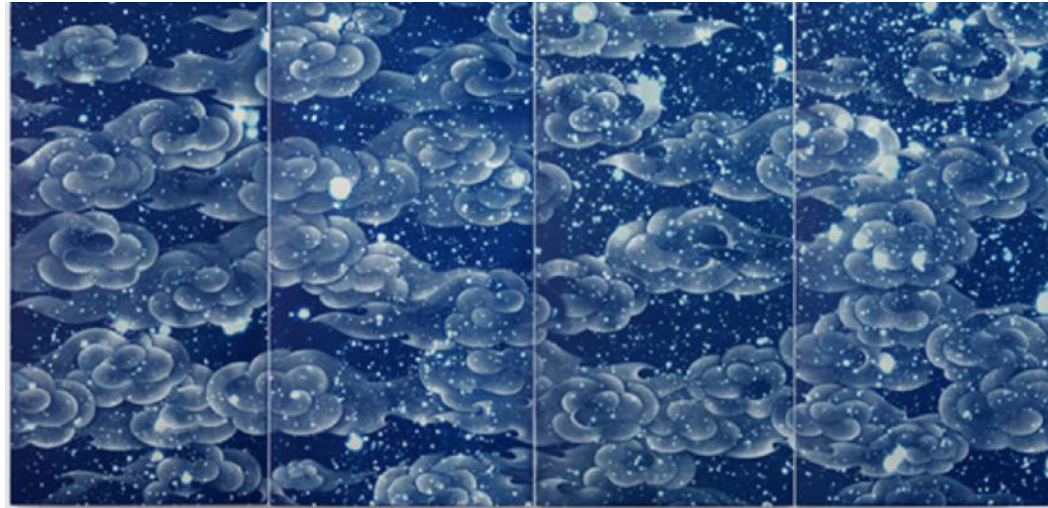
BAC

T1

BAC - T1 Transition - Ebtekar & Neri

Ebtekar, Ala

Artwork Size: 77 1/4 (H) x 150 1/8 (W) x 4 (D) inches
Artwork is framed



B. Ebtekar

Neri, Manuel

Artwork Size: 69 3/4 (H) x 22 3/4 (W) x 10 1/2 (D) inches
Vitrine size: 75 (H) x 36 (W) x 26 (D) in.
Base size: 42.5 (W) x 30 (D) inches
Artwork materials: carerra marble
Base has a corian wall to support the weight of the sculpture



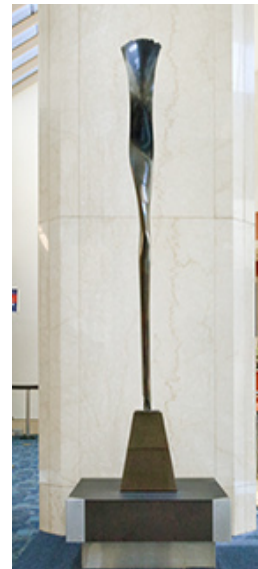
A. Neri

Zajac, Jack

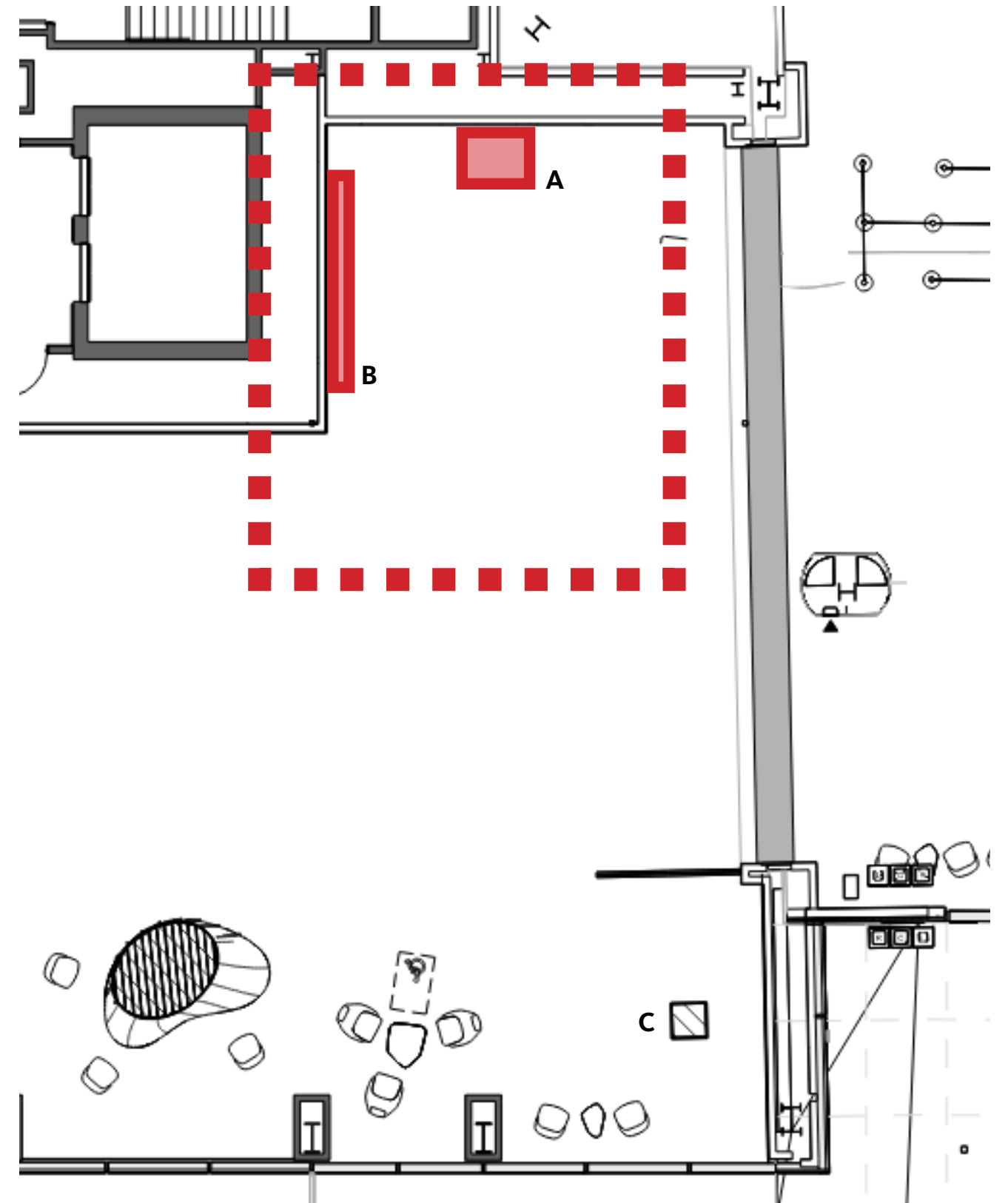
Artwork Sizes: 95 (H) x 8.5 (W) x 8.5 (D) inches
Vitrine size: 105 (H) x 30 (W) x 30 (D) inches
Base size: 15 7/16 (H) x 30 (W) x 30 (D) inches
Base sits 4' from the wall

Artwork material : bronze w/silver gilding patina

location has not been updated since last DRC, see appendix for more information on the artwork



C. Zajac



BAC - T1 Transition





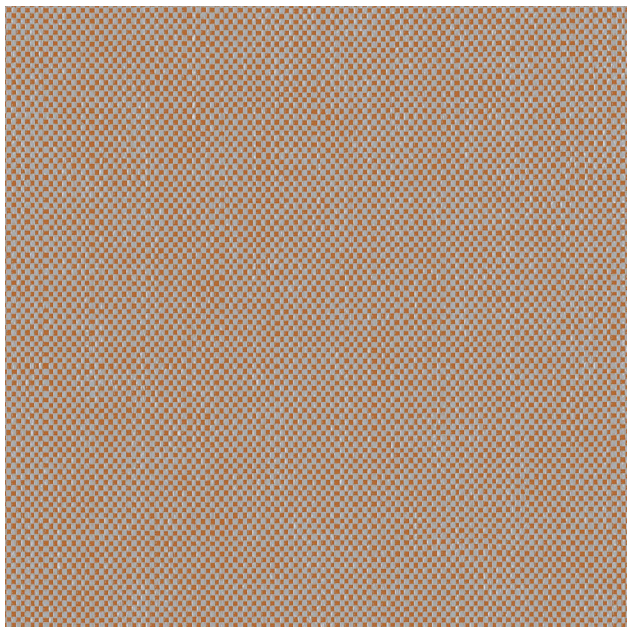
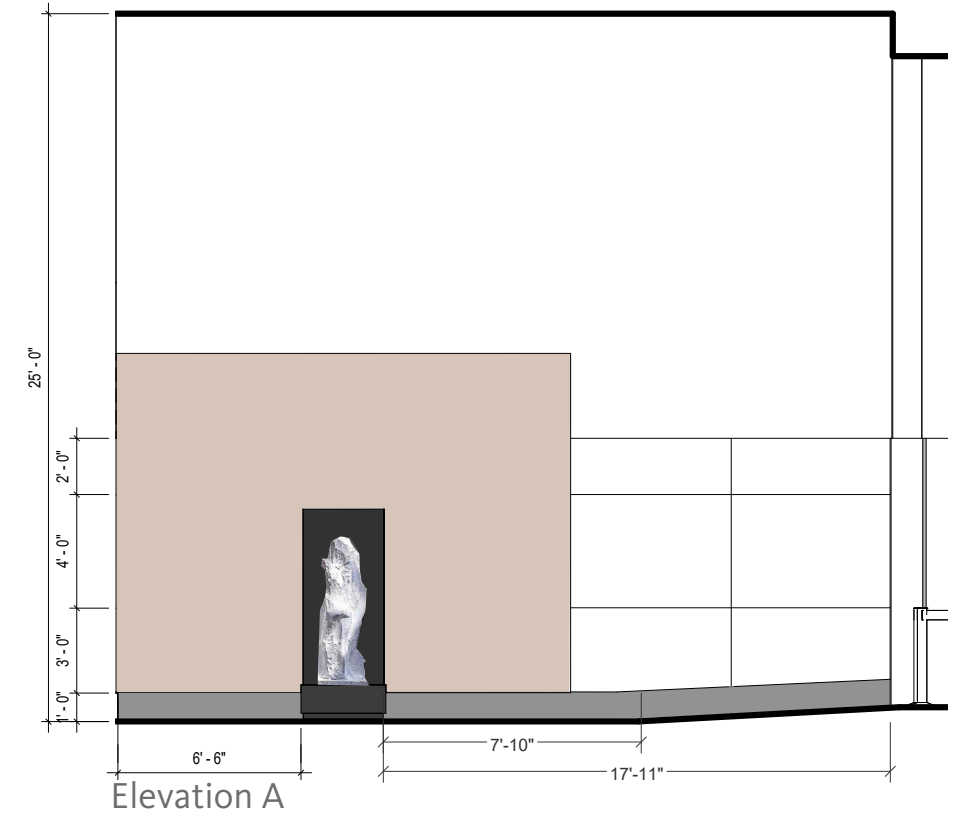
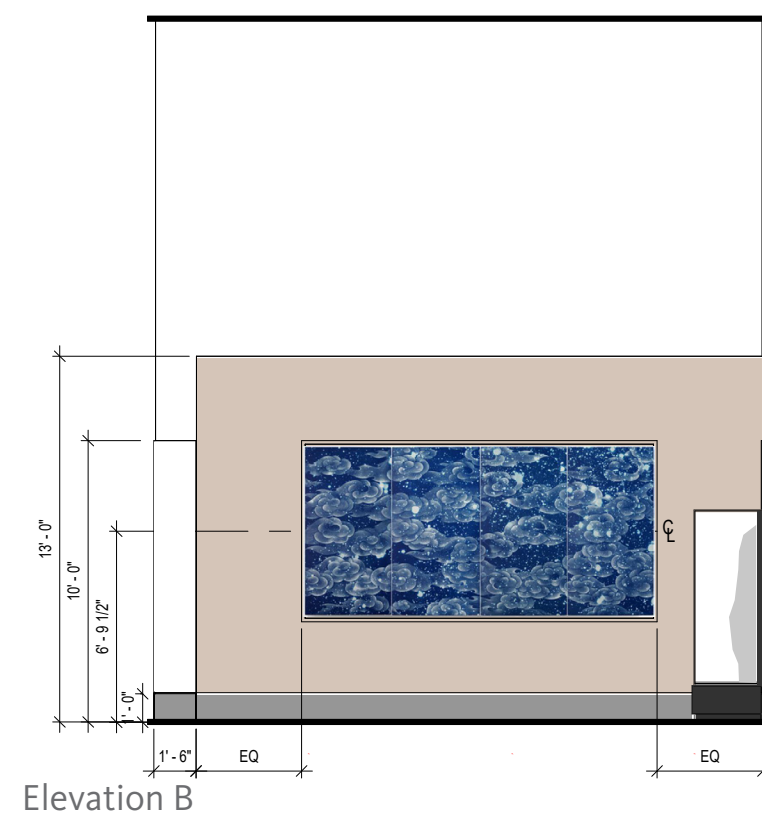
BAC - T1 Transition - Materiality



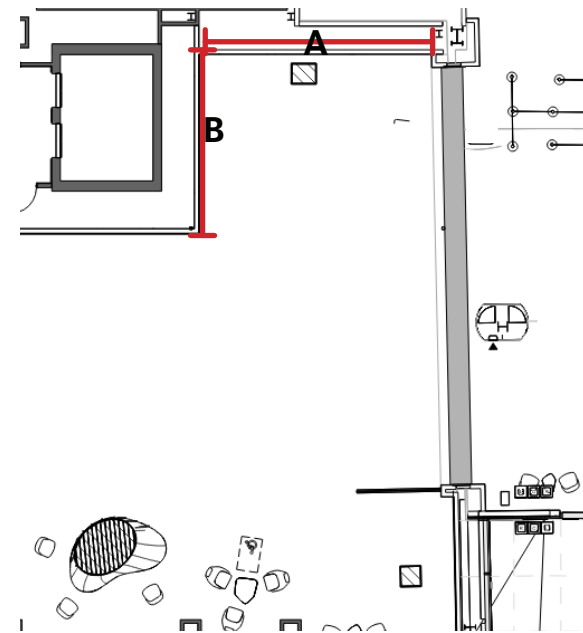
Ebtekar



Neri



Xorel
Strie 6423 W801



PROPOSAL

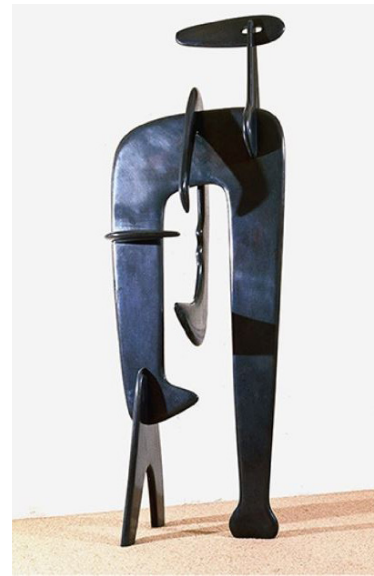
- artwork sits in a **8" deep niche** (depth to be confirmed)
- **niche material** : xorel Strie 6423 W801
- **niche height**: 13'-0". Datum chosen by adding another compact panel seam height above.
- **Ebtekar is centered 6'-9 1/2" AFF**
- **Neri sits 6" from the wall** and the base has a corian backwall to support the sculpture
- PT-01 gyp above with sstl base
- **ceiling height** : 25'-0"
- standard white ceiling tile

North Inglebrook Art Relocation

ARTWORK

Noguchi, Isamu

Artwork Size: 61(H) x 21.5 (W) x 15.25 (D) inches
Vitrine size: 75 (H) x 36 (W) x 30 (D) inches
Base size: 15 7/16 (H) x 42 1/2(W) x 30 (D) inches



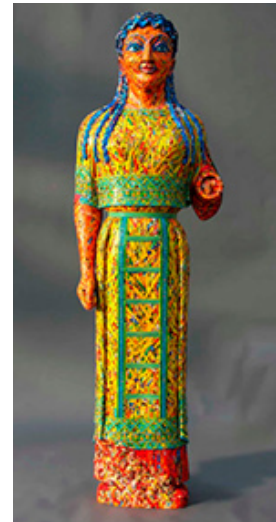
A. Noguchi

Shaw, Richard

Artwork Size: 63 (H) x 21 (W) x 16 (D) inches
Vitrine size: 75 (H) x 36 (W) x 26 (D) in.
Base size: 42 1/2 (W) x 30 (D) inches
Artwork materials: porcelain



B. Shaw



C. Stutz

Stutz, Michael

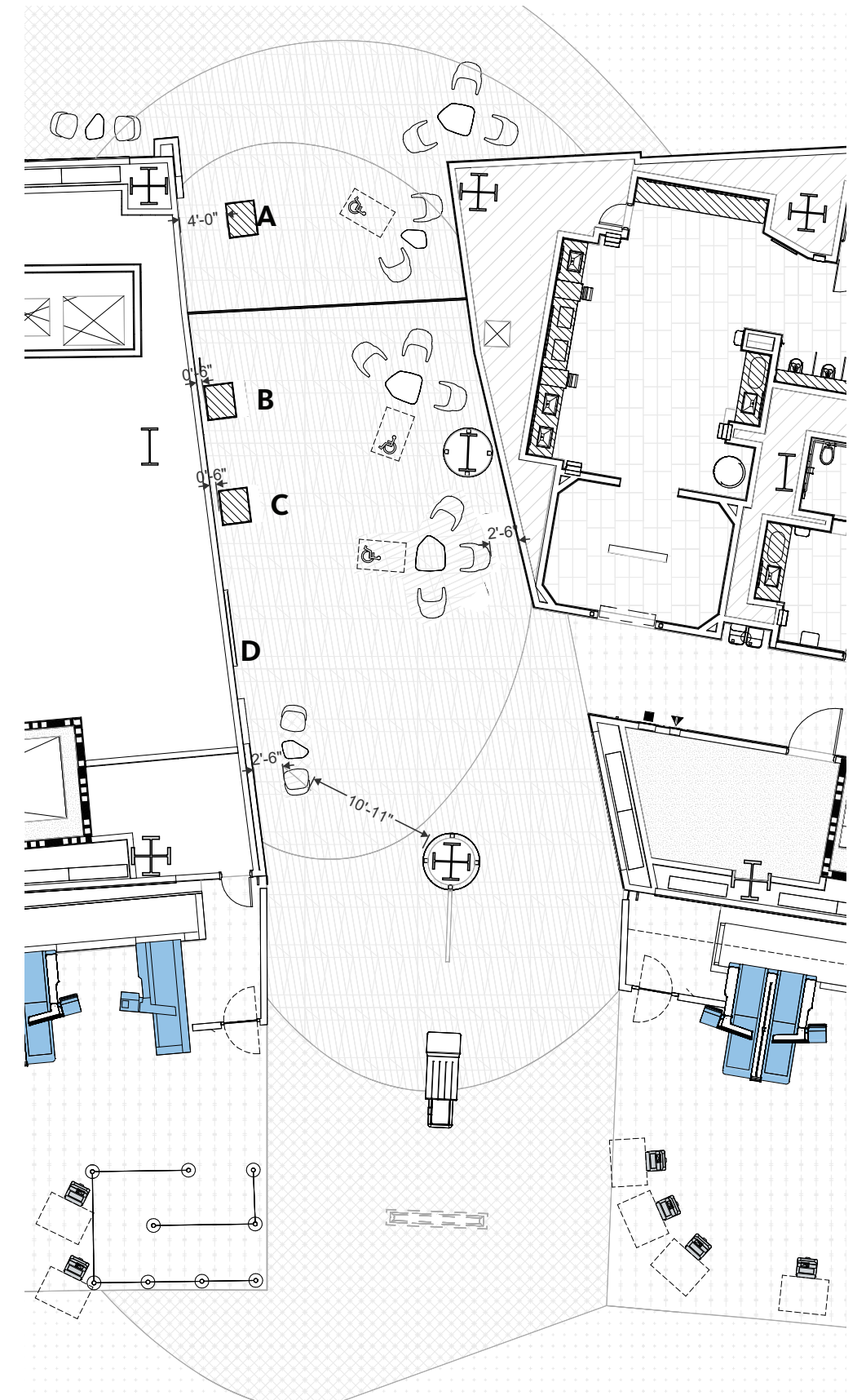
Artwork Size: 68 (H) x 20 (W) x 18 (D) inches
Vitrine size: 75 (H) x 36 (W) x 30 (D) in.
Base size: 42 1/2 (W) x 30 (D) inches
Artwork materials: cardboard

Crumpler, Dewey

Artwork Size: 48 (H) x 74.5 (W) inches
Vitrine size: max 5.5 (D) inches
Artwork materials: painted board

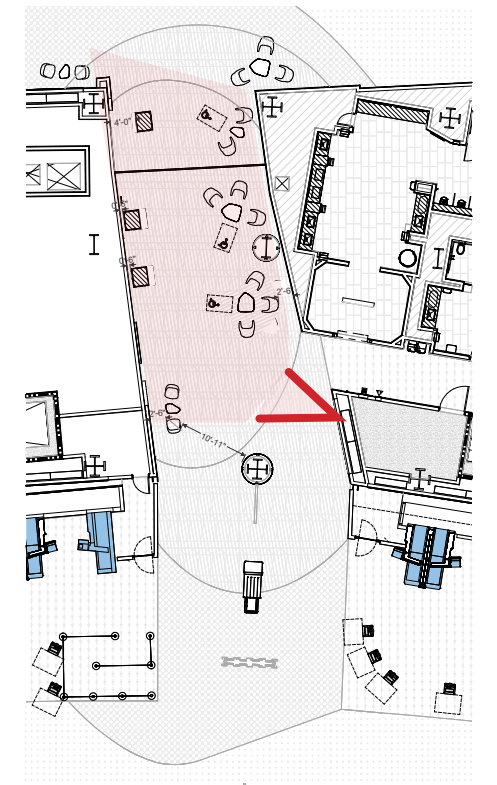


D. Crumpler

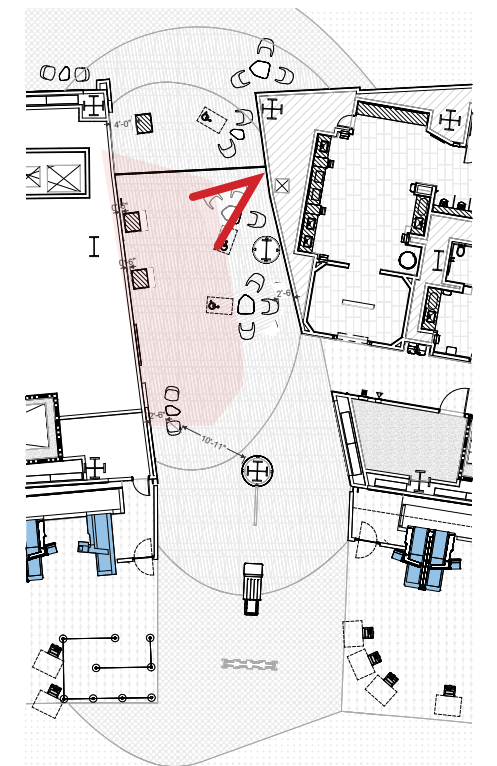


furniture layout in progress

North Inglenook - View A

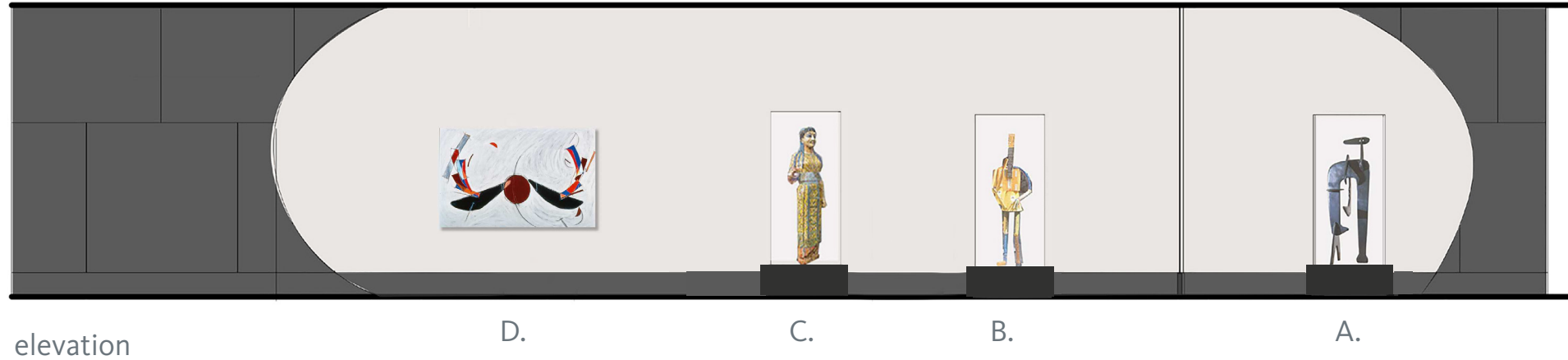


keyplan

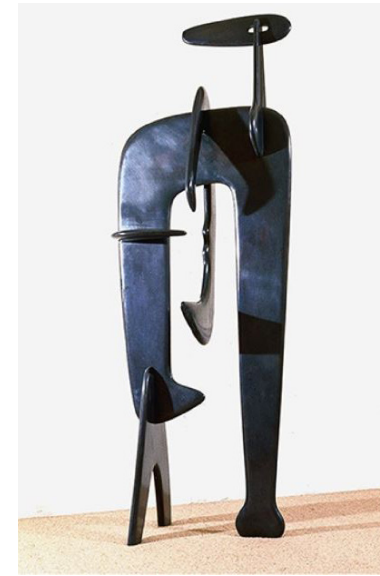


keyplan

North Inglenook Artwork & Materiality



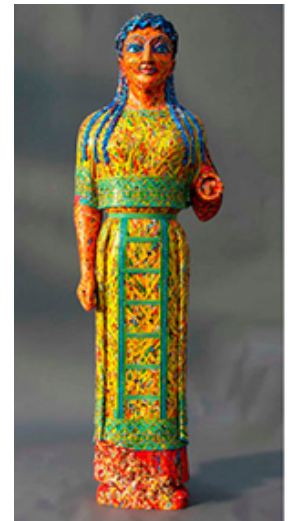
ARTWORK



A. Noguchi



B. Shaw

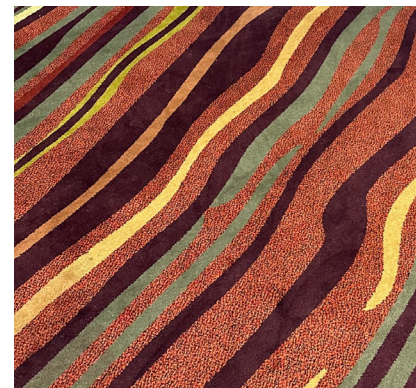


C. Stutz

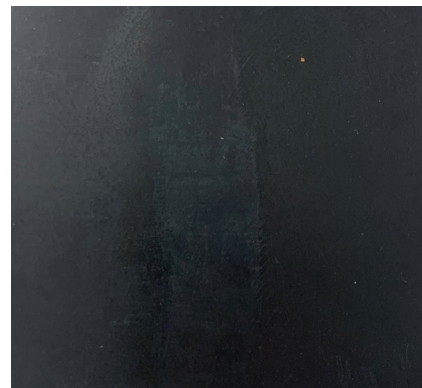
MATERIALS



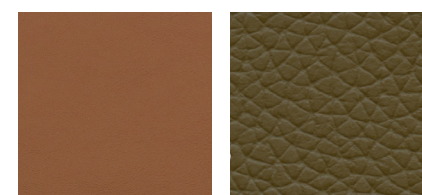
WA-11 Xorel behind artwork



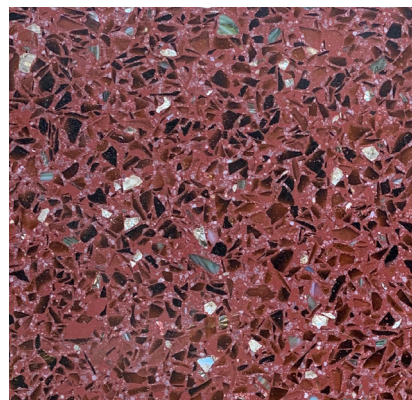
carpet



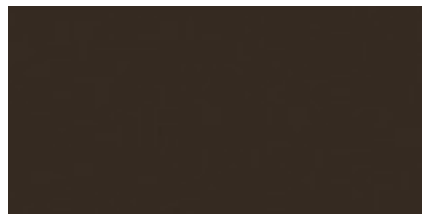
blackened steel



leather chairs



terrazzo



main art base corian -
Deep Espresso

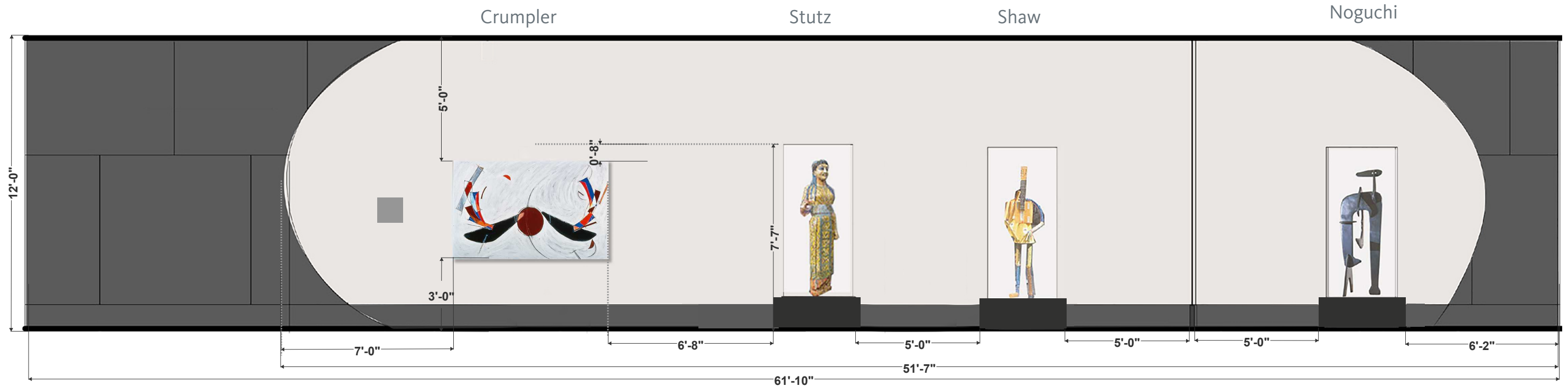


art base kick board corian -
Deep Titanium



D. Crumpler

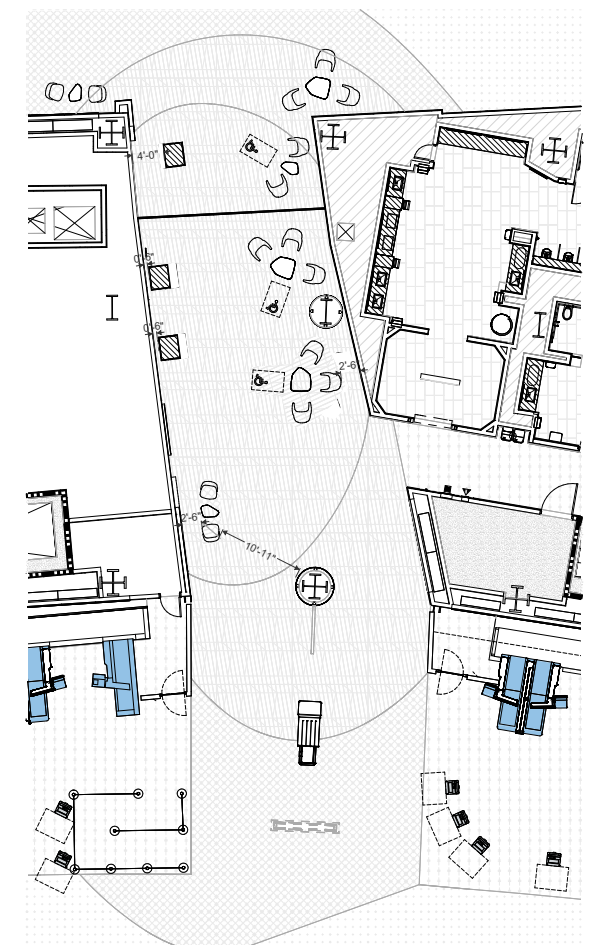
North Inglenook Artwork Placement



elevation

NORTH INGLENOOK PROPOSAL / ARTWORK PLACEMENT

- altered right-hand side of the blackened steel to compliment the sculpture
- removed light along curve of the blackened steel
- **blackened steel depth : 6"**
- **Crumpler's vitrine depth : 5 1/2"**
- **Shaw and Stutz** sit 6" from the wall
- **Noguchi** sits 4'-0" from the wall
- **Xorel wall covering** behind artwork (WA-11)
- **Ceiling height : 12'-0"**
- **height of Petit Repos** (low back chair) : 29.75"
- **height of Grand Repos** (high back chair) : 45"
- signage for artwork information to the left of Crumpler



key plan

Meet & Greet Art Relocation

Museum Collection Image

Artwork Size: TBD - Preference is to have the image large on the wall to feel immersive



SF Imagery
Woodline in the Presideo

*furniture layout in progress
bench in front of Bankstons is subject to approval by SFO Ops*

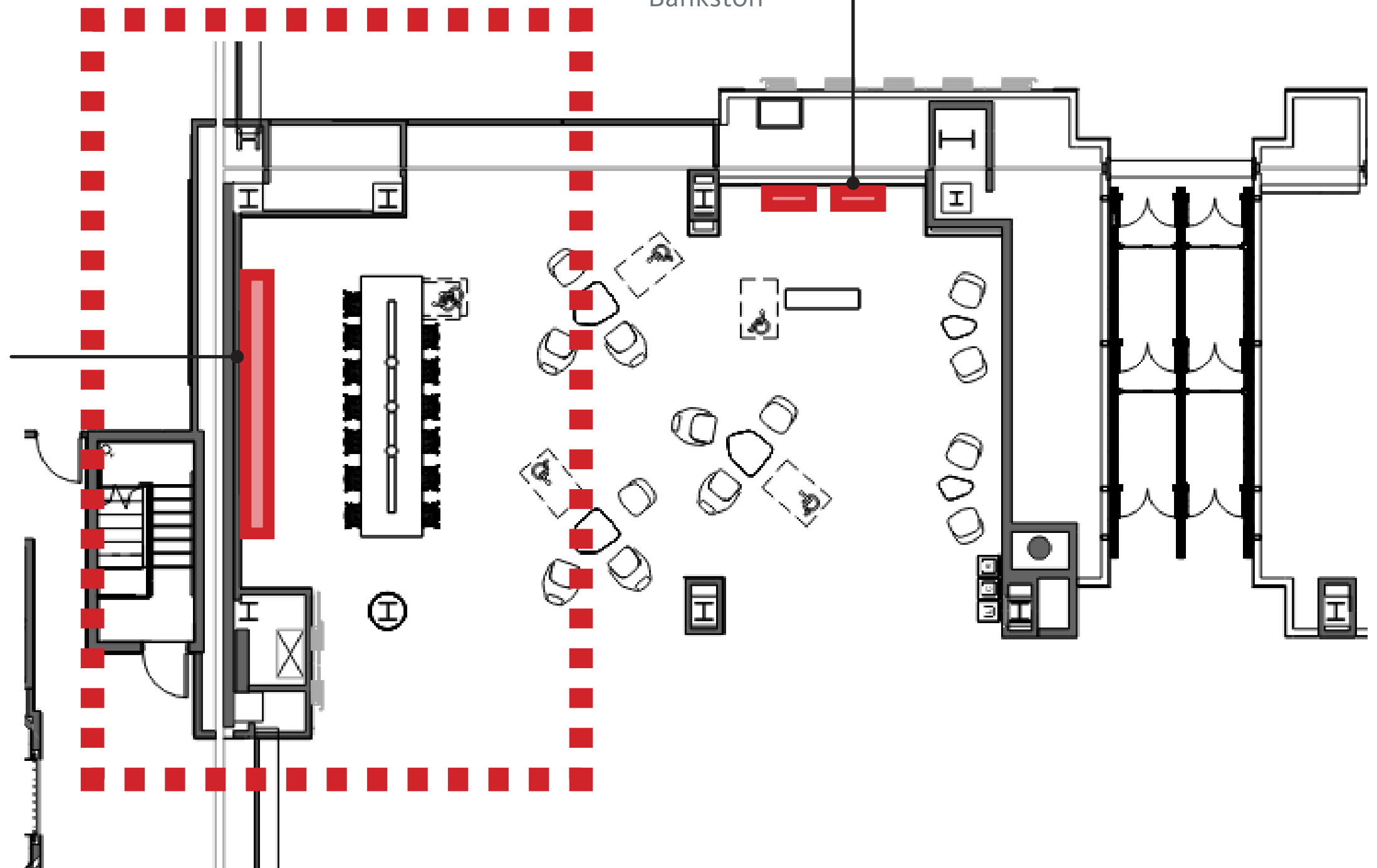


Bankston



Bankston, John

Artwork Sizes (2): 40(H) x 30 (W) inches
Vitrine size: requested a optimum frame, SFAC will provide details and final specs.
Artwork sits in a 2'-7" deep niche



Meet & Greet

panorama of *Woodline* in the Presideo



Meet & Greet

panorama of *Woodline* in the Presideo

