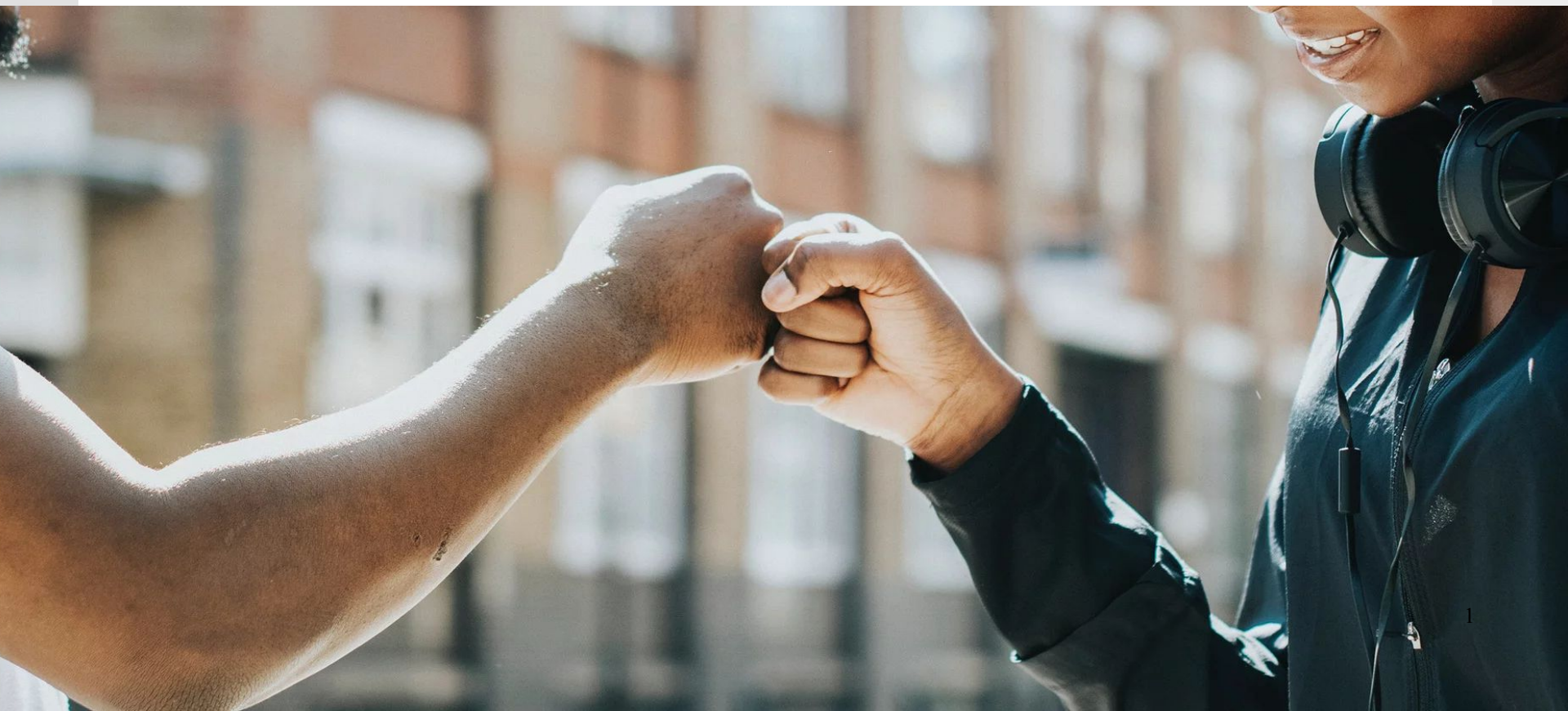




**EVERYCHILD RESTORATIVE JUSTICE CENTER  
CENTINELA YOUTH SERVICES, INC.**

110 S. La Brea Ave., Suite 110B, Inglewood, CA 90301  
Phone: 310.680.3850 Fax: 310.674.6004 [www.cys-la.org](http://www.cys-la.org)



# Centinela Youth Services, Inc. (CYS)

- **CYS began in 1975. Evidence based. Always evolving.**
- **Community-led diversion in LA County for 45 years.**
  - Putting justice back in the hands of the community.
- **Leader in restorative justice for 30 years. Youth able to make right with the victim and their community (SAMHSA recognition).**
- **Diversion:** In lieu of the next legal step in the process.  
**Focus on PRE-BOOKING.**

# Why Does Youth Diversion Matter?

**Simply being arrested  
(even if not sustained)\*:**

- Far more likely to drop out of school
- Far less likely to enroll in college

**7x more likely to experience\*\*:**

- Adult unemployment
- Welfare dependence\*\*



\*Sociology of Education, Harvard University, University of Texas at Austin

\*\*Sampson, R. J., & Laub, J. H. (1990). Crime and deviance over the life course: The salience of adult social bonds. *American Sociological Review*, 55(5), 609-627. <https://www.jstor.org/stable/2095859>.

# Defining Diversion & Referral Types

**DIVERSION:** Interrupts next legal step the case *would* have normally taken.

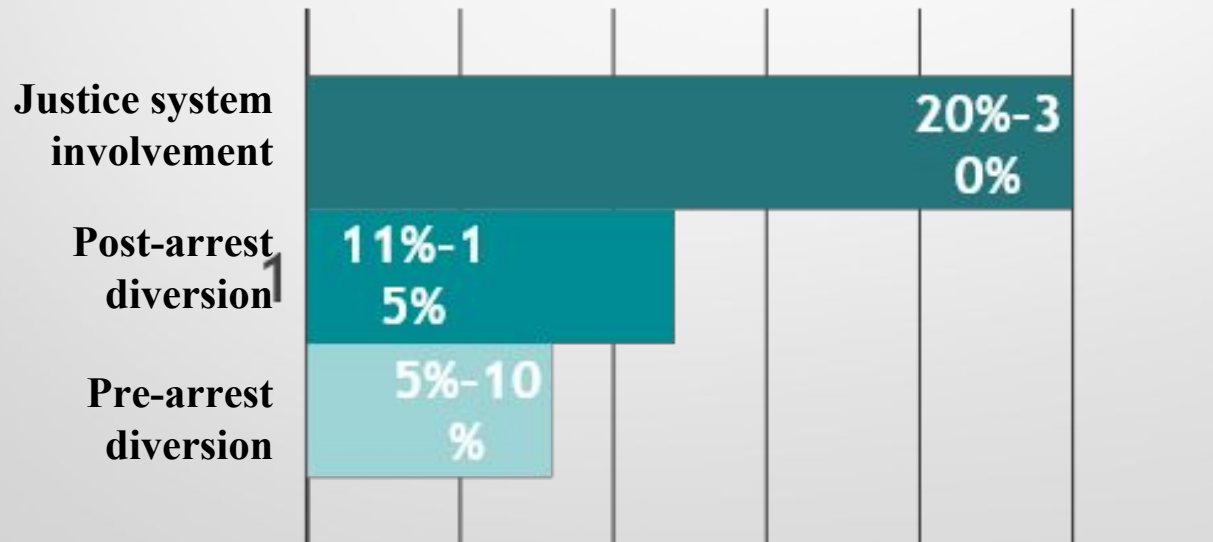
- **Pre-booking** – by law enforcement
- **Pre-filing** – by probation, prosecutor

**SERVICES NEEDED:** To avoid net widening

- Status offenses
- Parents requesting help
- Counsel and release
- Expulsion diversion at school districts

## Pre-Arrest Diversion Is a Priority Because...

Young people who are diverted in lieu of arrest(s) are less likely to re-offend than similar youth who are either diverted post-arrest or not diverted at all.



# CYS Diversion Referral Criteria

- Age: Under 18 at time of offense
- Crime type: Misdemeanor and felony
  - *(Generally not CA WIC 707-b)*
- Voluntary: Youth and parent must agree to participate (\*protections for youth in foster care)
  - No formal “admission” on the record
- Priors: Less important

# Everychild Restorative Justice Center

## Risk/Needs Assessment Domains (YLS/CMI):

School	Stress	Substance use
Mental health	Crime	Employment
Physical health	Risk behaviors	

- **Low risk of recidivism = RJ and low-touch services.**
- **Moderate/high risk of recidivism = clinical case management.**  
**Individualized service plans can include:**

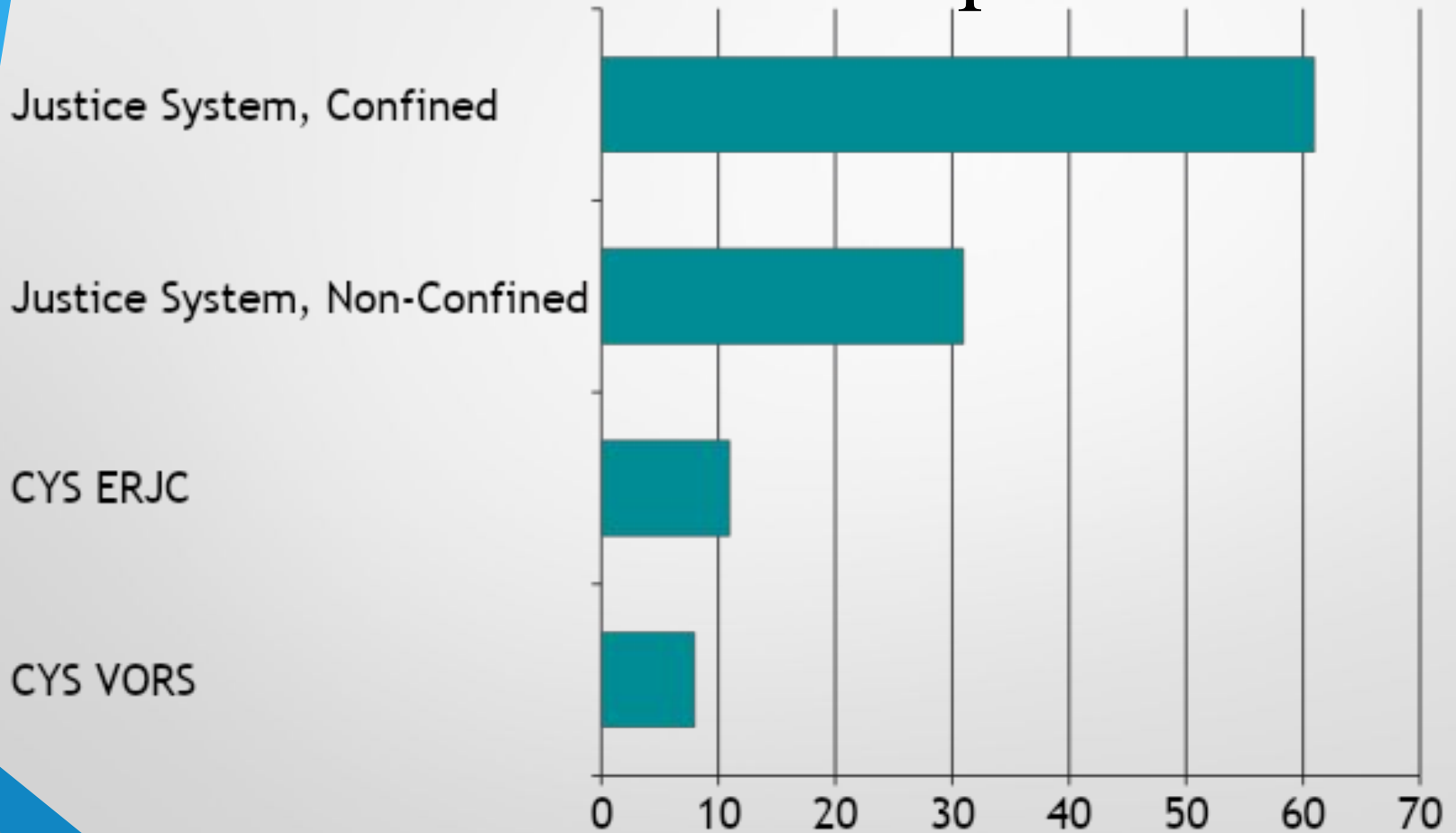
-Credit recovery	-Family mediation	-Substance abuse treatment
-Educational Rights legal services	-Family therapy	-Employment or job training
-Tutoring	-Individual therapy	-After-school activities
-Doctor's check-ups	-Parenting classes	
-Community service	-Mediation with victim and restitution	

# Outcomes

- Successfully completed services based on service data 75%
- Victim meeting resulting in agreement: 99%
- Agreements completed in full: 86%
- Victim satisfaction: 98%
- Youth reported process as fair: 96%
- Cost-effective: \$745 - \$2,400 vs. \$9,000<sub>8</sub>



# Recidivism Comparison



CYS & Non-Confined data provided by LA County Probation Dept. Confined data provided by LA County District Attorney.

# Eligible Felony Offenses

\*Referred at DA level

---

**Assaults** (without serious Injury)

---

**Criminal Threats**

---

**\*Arson**

---

**Vandalism** (no matter the \$\$ amount)

---

**Drug Offenses** (include possession for sales; or on campus)

---

**Grand Theft** (Including Person & Auto); **Joyriding**

---

**Burglary, 1st & 2nd degree**

---

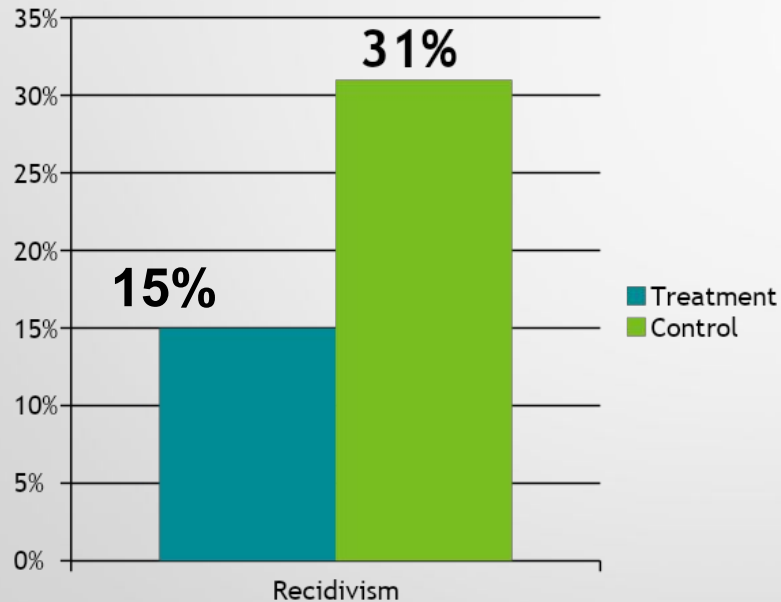
**\*Robbery** (without serious injury)

---

**Misd. Sexual Battery** (PC 243.4)

# Victim-Offender Restitution Services (VORS)

## Cuts recidivism in half



Independent study by CA Administrative Office of the Courts.  
Data provided by LA County Probation and CYS.

# Multi-Agency Collaboration

## Juvenile Arrest Diversion Collaborative

- Law enforcement; command and frontline
- Head juvenile prosecutor for county
- Head juvenile public defender
- Children's rights advocates
- Child Protective Services
- Presiding judge & probation support

**Meet bimonthly**

**Approve significant program changes**

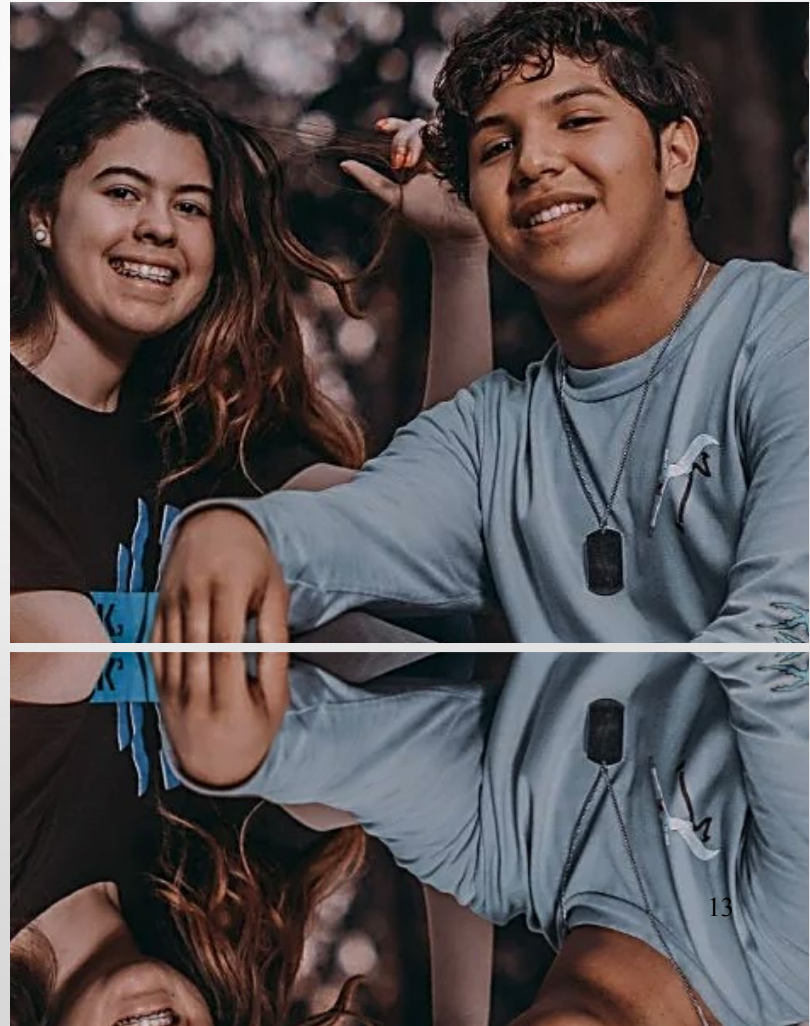
**Healthy debate**

**Led by CYS - CBO**

# Multi-Agency Collaboration

## Juvenile Arrest Diversion Collaborative

- Presiding judge – blanket order
- MOUs & cooperation agreements
- Building trust - communication
- Data-driven/research-informed decisions
- Shared values – youth development \* public safety \* equity



# Equity Protections

- CY5 “Transformation Team”
  - Training for justice system partners
  - Training for school district partners
  - Policy & practice change assistance/advocacy



# Equity Protections

## Key Partners

- Public counsel – educational rights
- Children’s Defense Fund
- Alliance for Children’s Rights
- Department of Children and Family Services
- County’s attorneys for youth in dependency
- Legal connections: immigration, housing, domestic violence, tickets/expungements, etc.

# Review the Evidence and Develop a Clear, Convincing Theory of Change

- For 90% of young people, criminalized behavior stems from unmet adolescent development needs and will **not** evolve into chronic or adult offending.
- Diversion can build meaningful accountability **and** reduce the costs of system involvement.
- Individualized case management models that connect youth to community-based development services are **especially** effective.





# Contact Us for More Information

## Centinela Youth Services and Everychild Restorative Justice Centers

**310-970-7702; [CYS-LA.ORG](http://CYS-LA.ORG)**

Jessica J. Ellis, Executive Director

[jellis@cys-la.org](mailto:jellis@cys-la.org)

