

San Francisco New Public Trash Receptacles

Civic Design Review - Phase 3



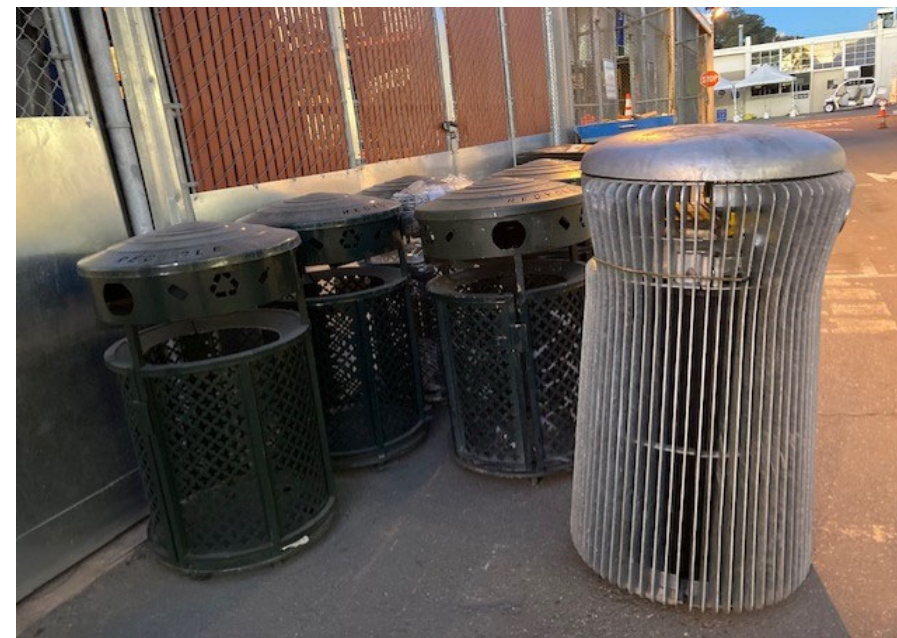
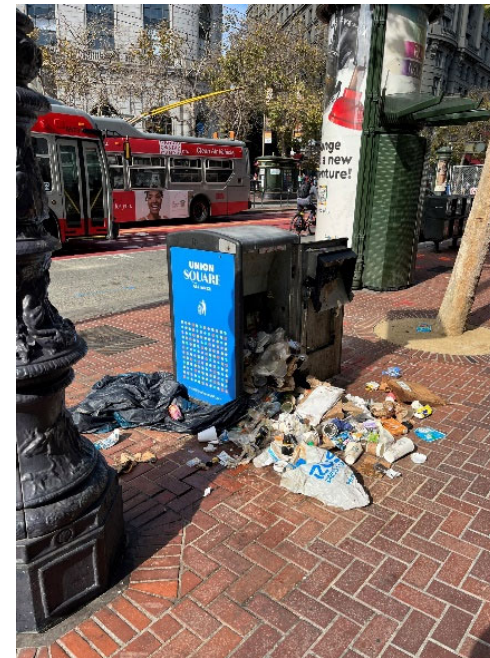
Agenda

- New trash receptacle criteria
- Trash can pilot program
 - Pilot trash cans, timeline, outreach strategies
- Pilot program results
- Recommendations
- Next steps

New Trash Receptacle Criteria

Design and Performance Criteria

- Rummage-resistant
- Construction is tamper-proof
- Durable and easy to maintain
- Easy to service
- Accommodate 32-gallon rolling toter
- Accommodate recycling exchange
- Aesthetically pleasing
- Sensor-ready
- Cost efficient: under \$3,000/each



Pilot Program

Pilot Trash Can – Custom Models



Soft Square

- Stainless steel construction
- Openings for trash and bottles/cans are behind hopper door
- Bottle/can opening also in the back



Slim Silhouette

- Stainless steel pipe construction
- Slim side profile allows more space on sidewalks
- Single-sided access
- Chute-shaped opening



Salt & Pepper

- Galvanized steel construction
- Two separate openings, with cans and bottles above and regular trash below
- Height of opening and shape deter rummaging

Trash Can Pilot Program

Pilot Trash Can – Off-the-Shelf Models



Open Wire Mesh
Manufacturer: Global
Industries

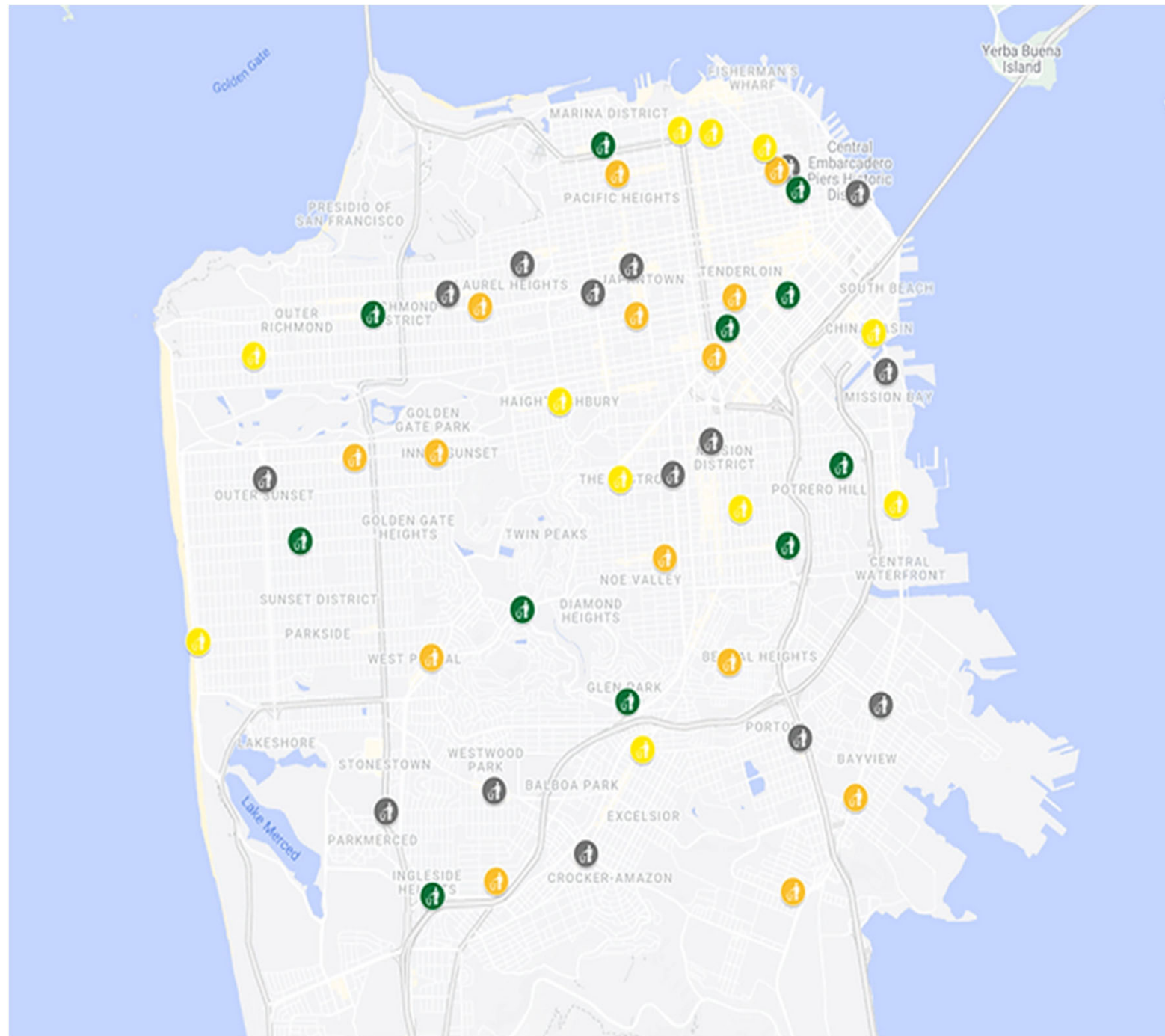


Ren Bin
Manufacturer: Victor Stanley



Bear Saver
Manufacturer: Securr



Pilot Program





- Total 26 pilot trash cans
- July 25 to September 23, with two 30-day installations

52 locations of pilot trash cans

First installation

-  Off-the-shelf cans
-  Custom cans

Second installation

-  Off-the-shelf cans
-  Custom cans

Pilot Program



Pilot Program

- QR codes affixed to trash cans
- Website with overview and online survey
- In-person public events: Chinatown, Manny's in the Mission District



- Social media posts
 - 66,000+ impressions on Twitter
- Articles in Public Works digital newsletter
 - 7,676 views in July
 - 7,259 views in August



Pilot Program Results

- Public survey responses : 1,027 responses
 - 1,010 in English
 - 10 in Chinese
 - 6 in Spanish
- Survey responses and feedbacks from Recology
- Survey Responses and feedbacks from Public Works Operations Team
- 311 Reports

Slim Silhouette meets the most design and functional criteria, with a few design modifications identified from the pilot program.

“Innovative design; sleek design; distinctive; unobtrusive.”



Recommendations

Slim Silhouette meets the above criteria with a few modifications:

- Change the sides from rods to a sheet of perforated stainless steel
- Re-examine the locking mechanism
- Re-examine the size and shape of main opening
- Re-design symbol for recycling exchange

Next Steps

- CatEx received.
- Approved Administrative Certificate of Appropriated for Article 10 Landmark Districts.
- Approved Minor Permit to Alter for Article 11 Conservation Districts.
- **Civic Design Review Phase 3 - underway**
- **Secure funding for trash can procurement – underway**
- **Issue RFP/RFQ document to solicit trash can manufacturing and procurement.**

Q & A

Thank you!