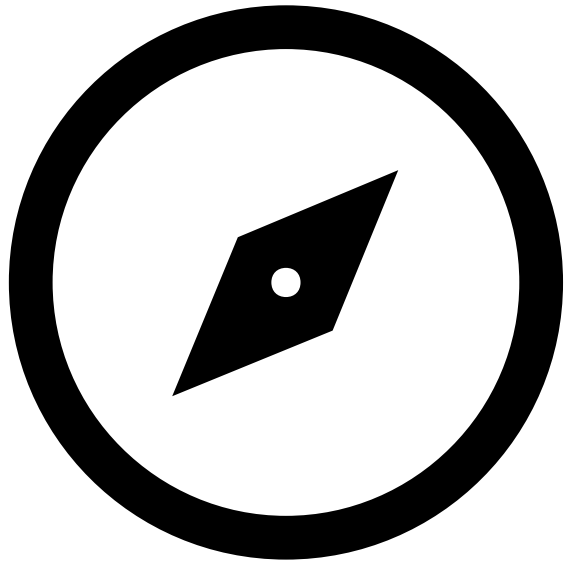




San Francisco
Planning





WHAT DOES SF PLANNING DO?

- A regulatory agency that guides **growth and development** in San Francisco by:
 - Regulating land use through **zoning**
 - Issuing **permits**
 - Preserving **historic features**, assets, and other elements
 - Developing **long-term plans** to guide housing, commercial, and other development
 - **Engaging with communities** to shape citywide plans

“In times of crisis,
seemingly impossible ideas
suddenly become possible.”

- Naomi Klein

Racial and
social equity

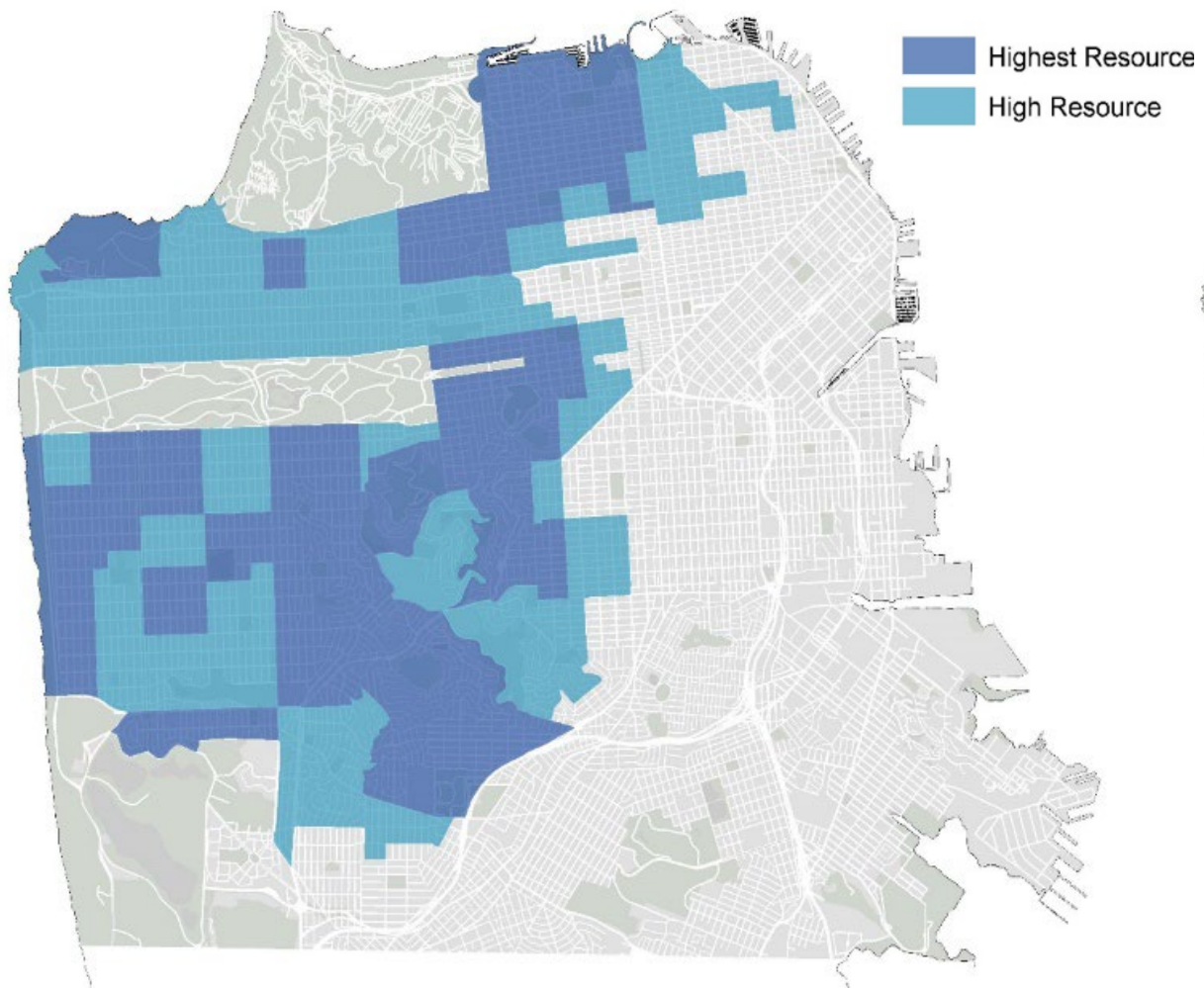
Eliminate
community
displacement

Affordable
housing choices
for everyone in
all
neighborhoods

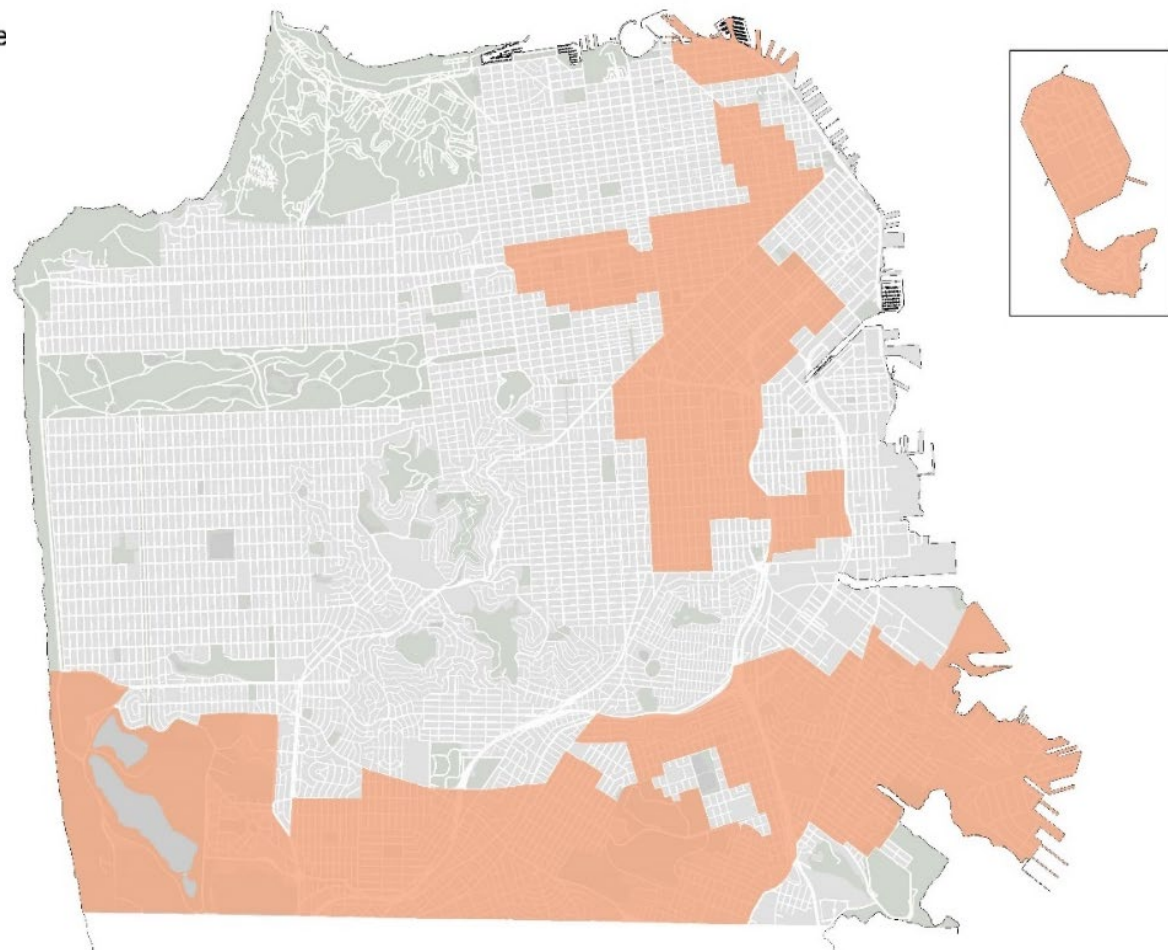
Thriving
neighborhoods
resilient to
climate and
health crises

SAN FRANCISCO HOUSING ELEMENT

Well-resourced Areas



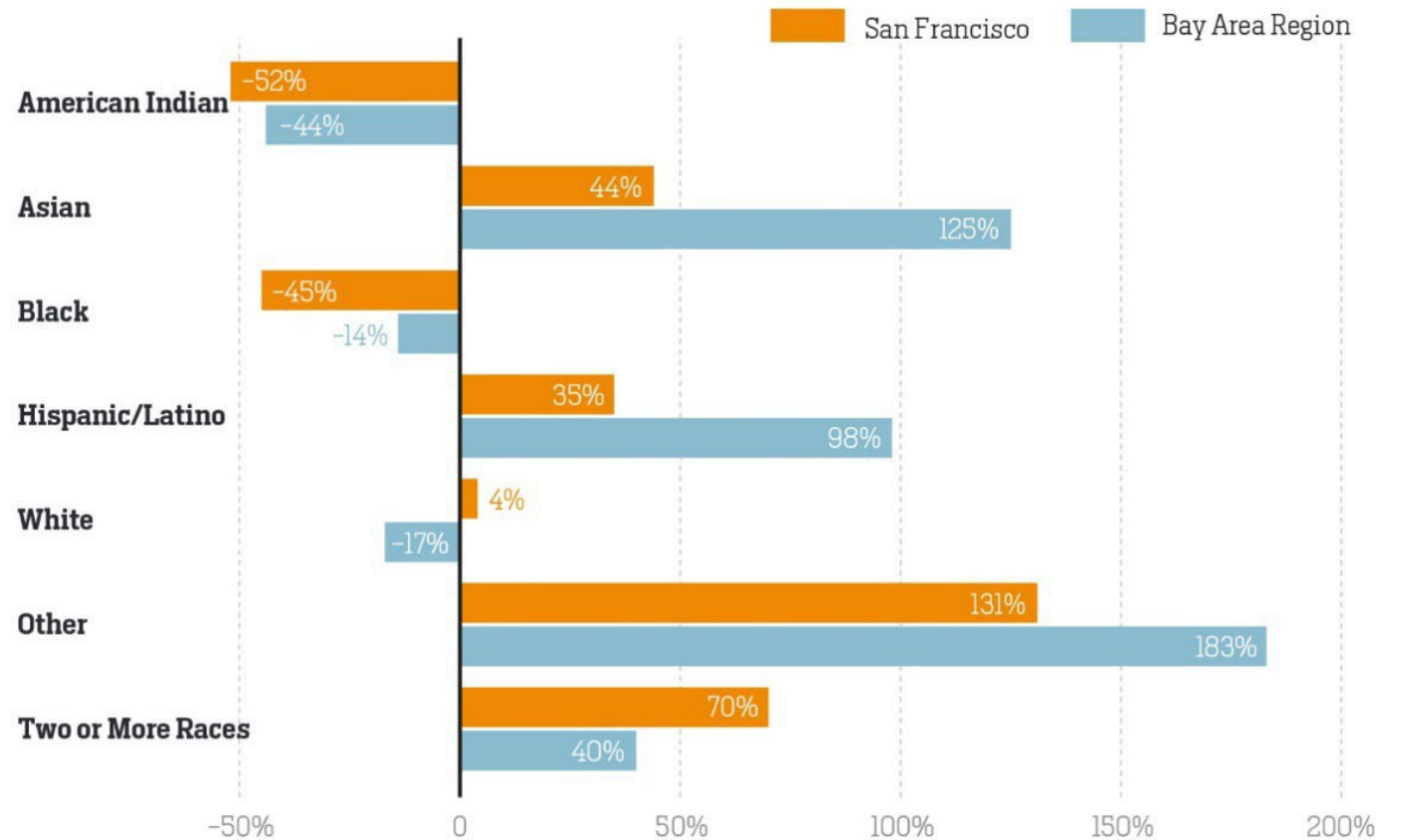
Priority Equity Geographies



Redress Harm and Further Fair Housing

- Develop programs that assist harmed communities to access affordable housing and homeownership opportunities
- Prioritize low-income American Indian, Black, and other people of color for housing services
- Build affordable housing in places where patterns of exclusion and segregation persist
- Prioritize public investments in Priority Equity Geographies

Percentage change of population by race and ethnicity from 1990 to 2015.



Source: 1990 Decennial Census (IPUMS-USA); ACS 2015 5-year Estimates (IPUMS-USA).

KEY HOUSING ELEMENT ACTIONS

- Redressing harm in Black communities
 - 1.7.1 Identify racial, ethnic, and social groups who have been **disproportionately underserved by MOHCD's Affordable Rental and Homeownership units** and the underlying reasons why those groups are underrepresented in obtaining such housing...
 - 1.7.8 Evaluate **increasing neighborhood preference allocation for Below Market Rate** units in Priority Equity Geographies to better serve American Indian, Black, and other communities of color, if possible, per the Federal Fair Housing regulations...
 - 5.4.7. Create and pilot programs to **increase access to Affordable Rental and Homeownership units** and other housing services as redress for American Indian, Black, Japanese, Filipino, and other communities directly harmed by past discriminatory government ...
 - 5.4.8 **Expand the Certificates of Preference program...**to qualify eligible descendants of those displaced by redevelopment projects for priority in renting or buying affordable housing. Conduct comprehensive outreach and engagement to identify the descendants of households who have been displaced...

HOUSING FOR ALL

Key Housing Element Implementation activities launching Spring 2023



Expanding Housing Choice (Zoning Program)

Accommodating more housing in areas with good access to transit and other services



Affordable Housing Funding & Strategies

Coordinating across government, private, nonprofit and philanthropic funding sources



Activating Community Priorities

Working with community leaders, equity communities and Cultural Districts



Housing Production & Process Streamlining

Simplifying permitting and approvals to reduce housing costs

COMMUNITY ENGAGEMENT

- Facilitating Community Equity Advisory Council
 - Advise SF Planning on policies, investments, and elevating the voices of communities in City decisions
- Budgeting baseline \$750,000 to community engagement (direct grants, not staff time)
 - \$400K – Community fellowships starting with American Indian and Black communities this year
- Supporting citywide Cultural District program, including African American Arts and Cultural District



RACIAL AND SOCIAL EQUITY ACTION PLAN

What's in SF Planning's RSE Plan? What are its performance metrics?

Phase 1 (Internal) Plan – Adopted December 2019

- Public dashboard to launch Summer 2023
- Metrics for internal work: outreach targets in communities of color, equitable professional development, discipline, etc.

Completed key actions

- Equitable and Inclusive Hiring and Recruitment Guidelines
- Promotions, Retentions, and Professional Development Standards and Guidelines
- Targeted 60% local public school hire in Summer Internship program
- Budget Equity Tool
- On-going Racial Equity training for staff

Phase 2 (External) Plan – Forthcoming in late 2023

- Metrics for external work: equitable service delivery, access, community engagement, etc.

On-going and developing efforts

- Equity Audit of Planning Code
 - Define circumstances in the Planning Code that may lead to racial and social disparities and advantages.
 - Use mapped data, research, analysis, and community input to make updates to the Planning Code
- Equity Impact Analysis Guidelines
 - Summarize how SF Planning's review processes impact, affect or perpetuate disparities and/or advantages across racial and social groups.
 - Produce guidelines on how to evaluate progress on equity in San Francisco Planning decisions.



THANK YOU

*Mural: "Everyone Deserves a Home"
(Flickr: Jon Galvin)*