

# Reparations and Spatial Justice

Kerby Lynch, PhD

[klynch@cerepolicyresearch.com](mailto:klynch@cerepolicyresearch.com)

Nick Okafor, CEO of Trubel and Company

[nick@trubel.co](mailto:nick@trubel.co)

# Why

Click on the highlighted parcels to see current use and more information.

This map is not a comprehensive list of all city-owned properties, it only includes those associated with the Urban Renewal Programs of East End/Valley Street, East Riverside and Hill Street/Head of Montford.

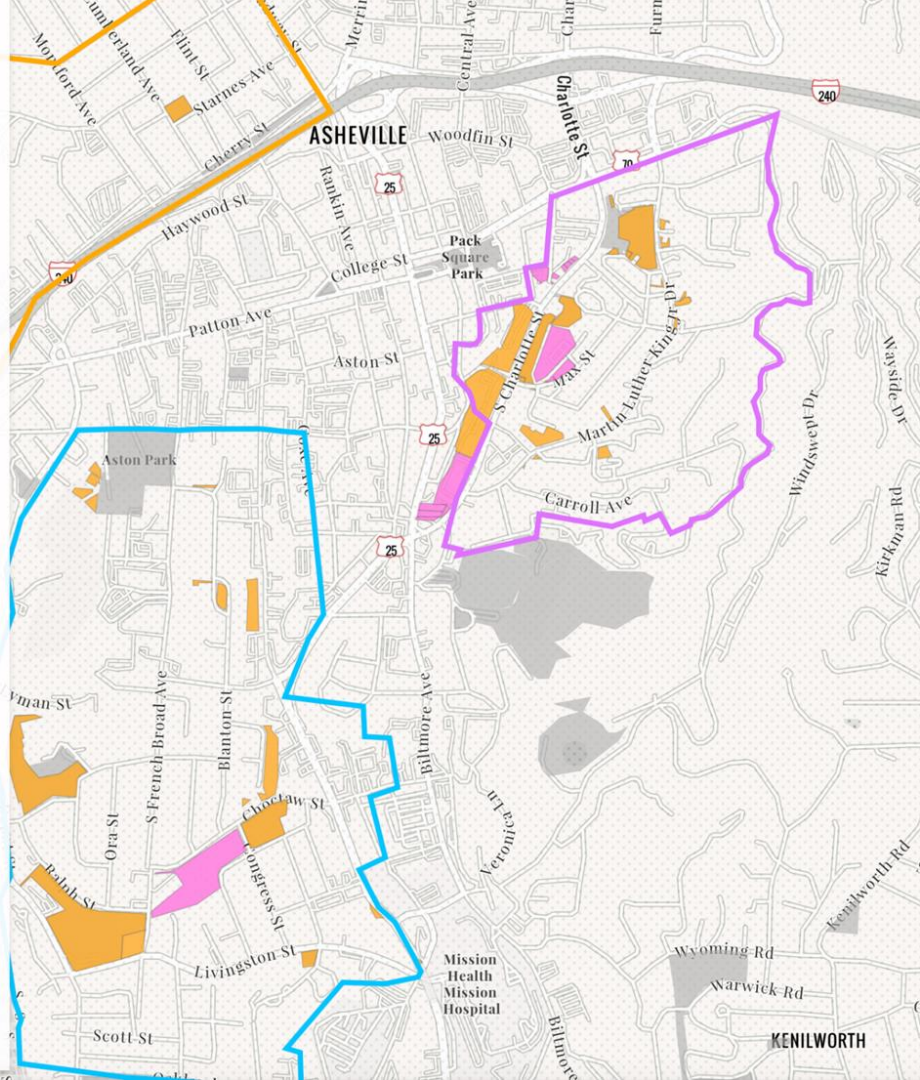
## City Land from Urban Renewal

### Acquisition

- Acquired by Urban Renewal
- Related Redevelopment
- Still Researching

## City of Asheville Parks

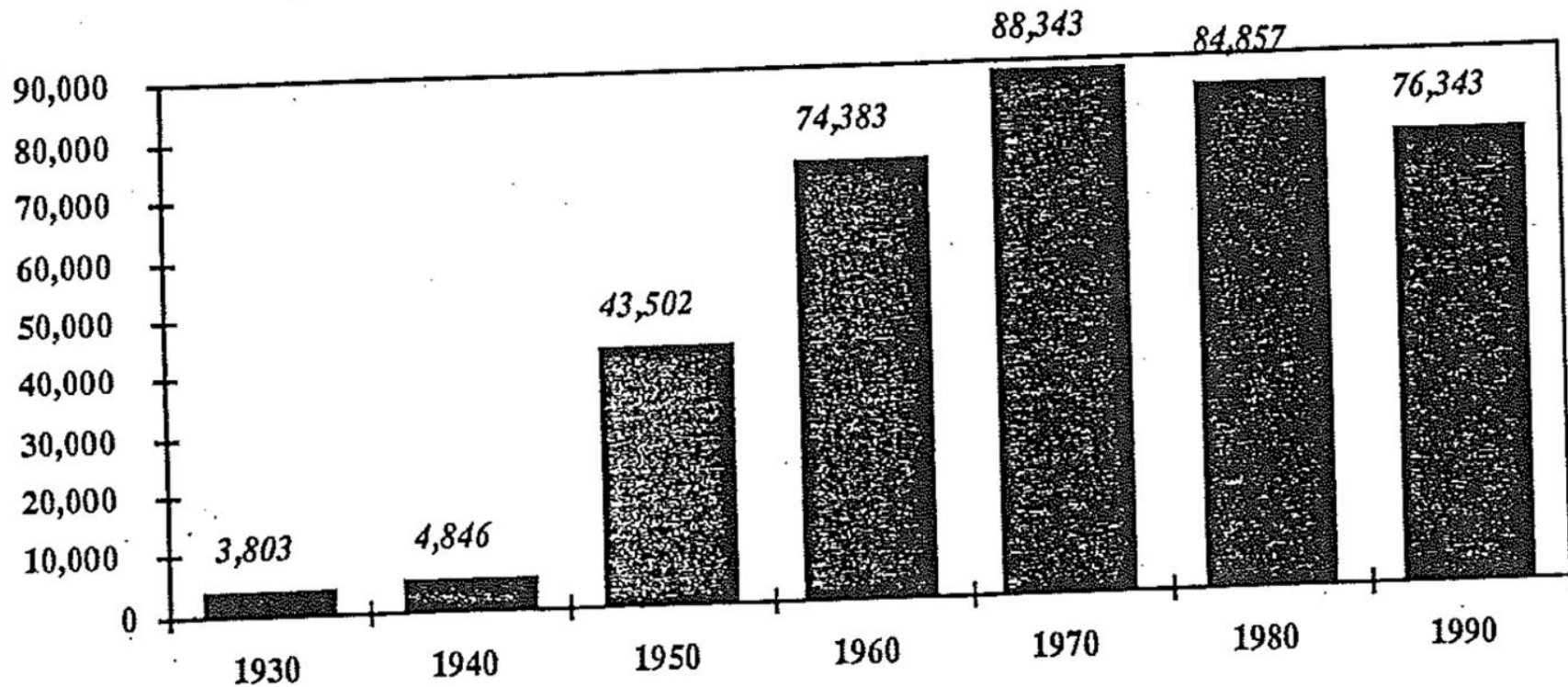
Related Redevelopment are properties that did not come from the Housing Authority, but were clearly related to some form of redevelopment around the same time as Urban Renewal, and in the same general area.



# Why Think Spatially?

PHYSICAL HEALTH	MENTAL HEALTH	HOUSING & HOMELESSNESS	INCOME & EMPLOYMENT	EDUCATION	CRIMINAL JUSTICE
Life expectancy	At risk for major depression	Homeownership	Median household income	High school diploma	Neighborhood safety
Obesity	Currently depressed	Accepted mortgage applications	Income per capita	College-going	
Diabetes	Likely has had serious psychological distress in the past year	Home value	Unemployment	Suspensions	Traffic stops
Insurance	Ever seriously thought about committing suicide	Rent-burdened Households	Poverty	Performance on standardized test (Math)	Arrests
Covid-19 vaccination	Needed help for mental health	Homelessness	College degree attainment	Performance on standardized test (English)	Use of force
	Rec'd treatment for mental health	Eviction rate		Absences	Incarceration (County jail)
	Receiving counseling			Early childhood education participation	
	Taking medication Rx by a doctor				

## The Black Population of San Francisco: 1930-1990



Source: 1960,70,80,90 U.S. Census, and *San Francisco: A City In Crisis*.

# Health Outcomes

## Length of Life

San Francisco (SF)  
County

California

United States

### Premature Death



4,800

5,700

7,300

Years of potential life lost before age 75 per 100,000 population (age-adjusted).

In San Francisco County, California, 4,800 years of life were lost to deaths of people under age 75, per 100,000 people.

Error margin: 4,600-5,000

Years of data used: 2018-2020

The 2023 Rankings do not include updated data for this measure. [Please visit our FAQs to learn about methods changes in the 2020 census.](#)

### Leading Causes of Death under age 75 in San Francisco (SF) County

Leading Causes of Death Under Age 75	Deaths	Age-Adjusted Rate per 100,000
Malignant neoplasms	1936	62.1
Accidents	1413	50.3
Diseases of heart	1202	38.5
Cerebrovascular diseases	252	8.1
Intentional self-harm	210	7.7

## Disaggregation

### Disaggregated by Race

Disaggregated by Race	Value	Error Margin
<b>Years of Potential Life Lost Rate</b>	<b>4,800</b>	<b>4,600-5,000</b>
American Indian & Alaska Native	9,700	6,600-13,700
Asian	2,700	2,500-2,900
Black	14,900	13,700-16,100
Hispanic	6,000	5,500-6,400
White	4,100	3,900-4,300

# trubel&co to deliver two GIS apps

## State of Black San Francisco

- Format: WebApp/Dashboard
- Intended User: Committee member seeking to explore socioeconomic outcomes in specific neighborhoods

How might historically black neighborhoods in SF correlate with negative socioeconomic outcomes compared to county?

## Urban Renewal & Black Displacement

- Format: StoryMap
- Intended User: Community member seeking to learn about SF black displacement history, as it relates to Reparations

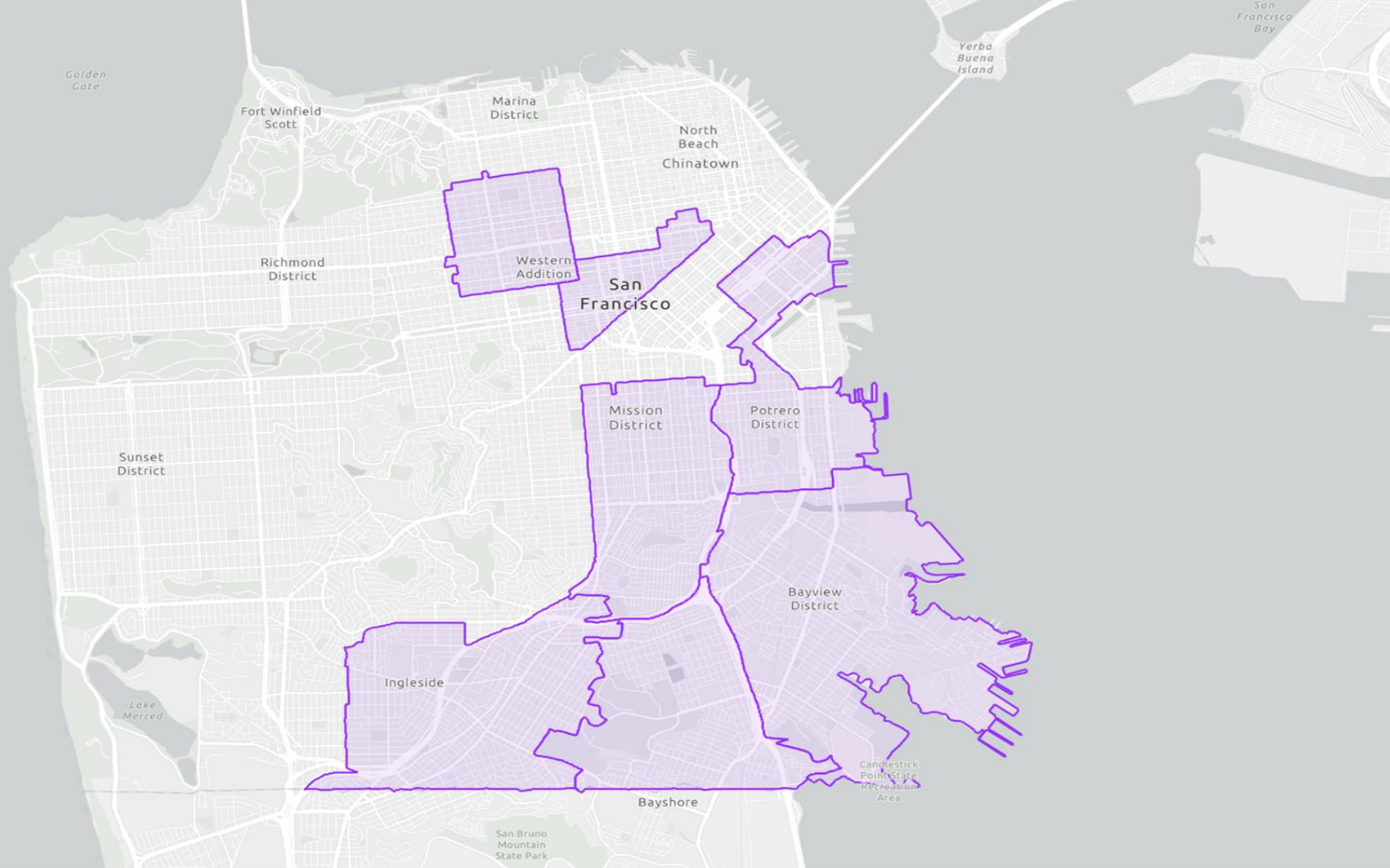
What is the history of Black displacement in SF, and how have past city efforts of urban renewal impacted communities today?



# Overview: State of Black San Francisco

The following represents the GIS “layers” created to establish a baseline of understanding various socioeconomic outcomes across city census tracts:

1. General Demographics: Total Population
2. General Demographics: Dot Density View
3. Black Demographics: % Population Black
4. Economics: % Population under Poverty Level
5. Housing: 2022 Home Value
6. Infrastructure & Services (Environment): Green Space
7. Infrastructure & Services (Digital): % Households with High Speed Internet
8. Infrastructure & Services (Education): % Adults No High School Diploma
9. Redlining: Home Owners Loan Corporation Analysis
  - Existing Map; Alignment to Tracts; Average Score Assessment



Golden Gate

Fort Winfield Scott

Marina District

North Beach  
Chinatown

Yerba Buena Island

San Francisco Bay

Richmond District

Western Addition

San Francisco

Sunset District

Mission District

Potrero District

Lake Merced

Ingleside

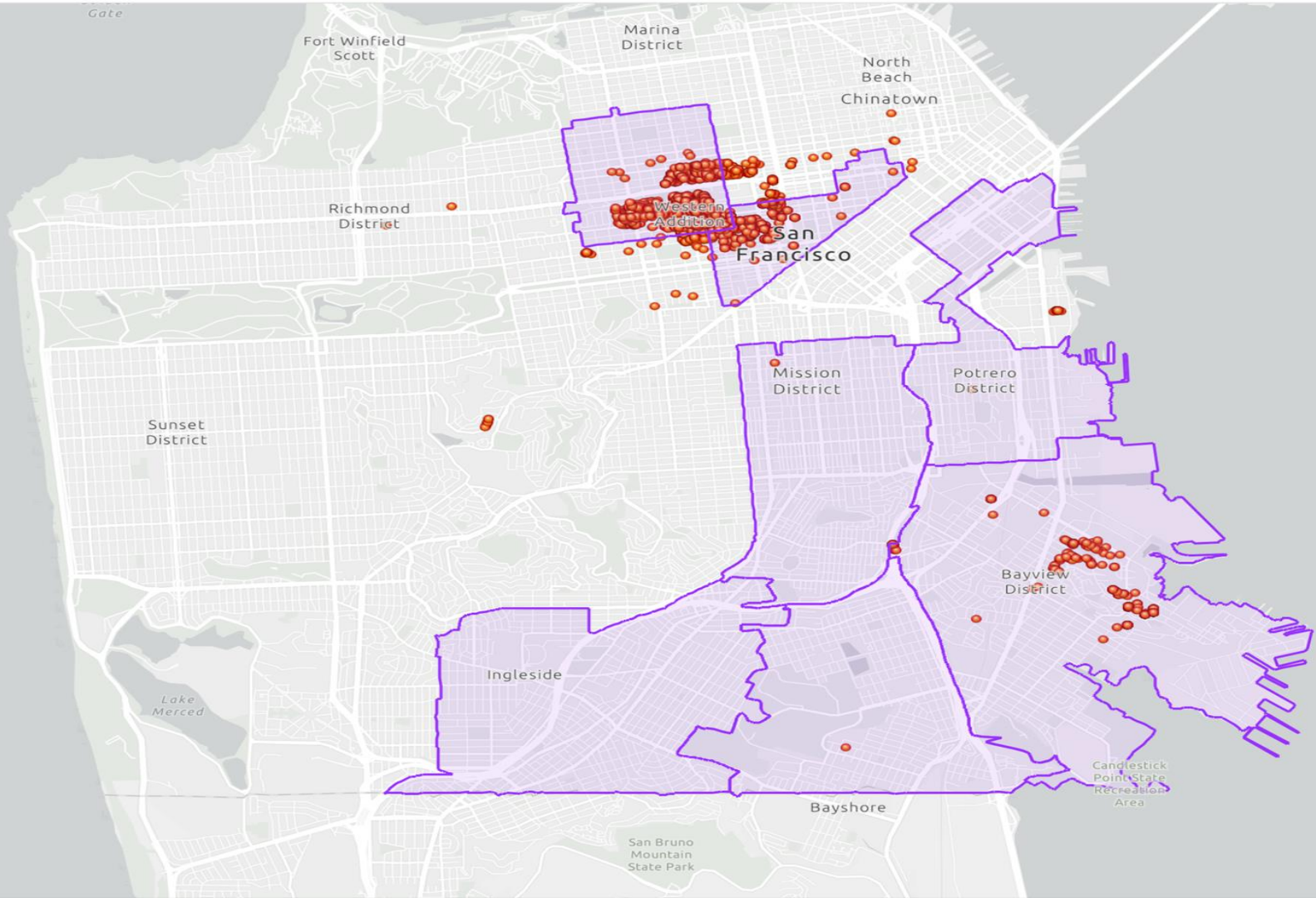
Bayview District

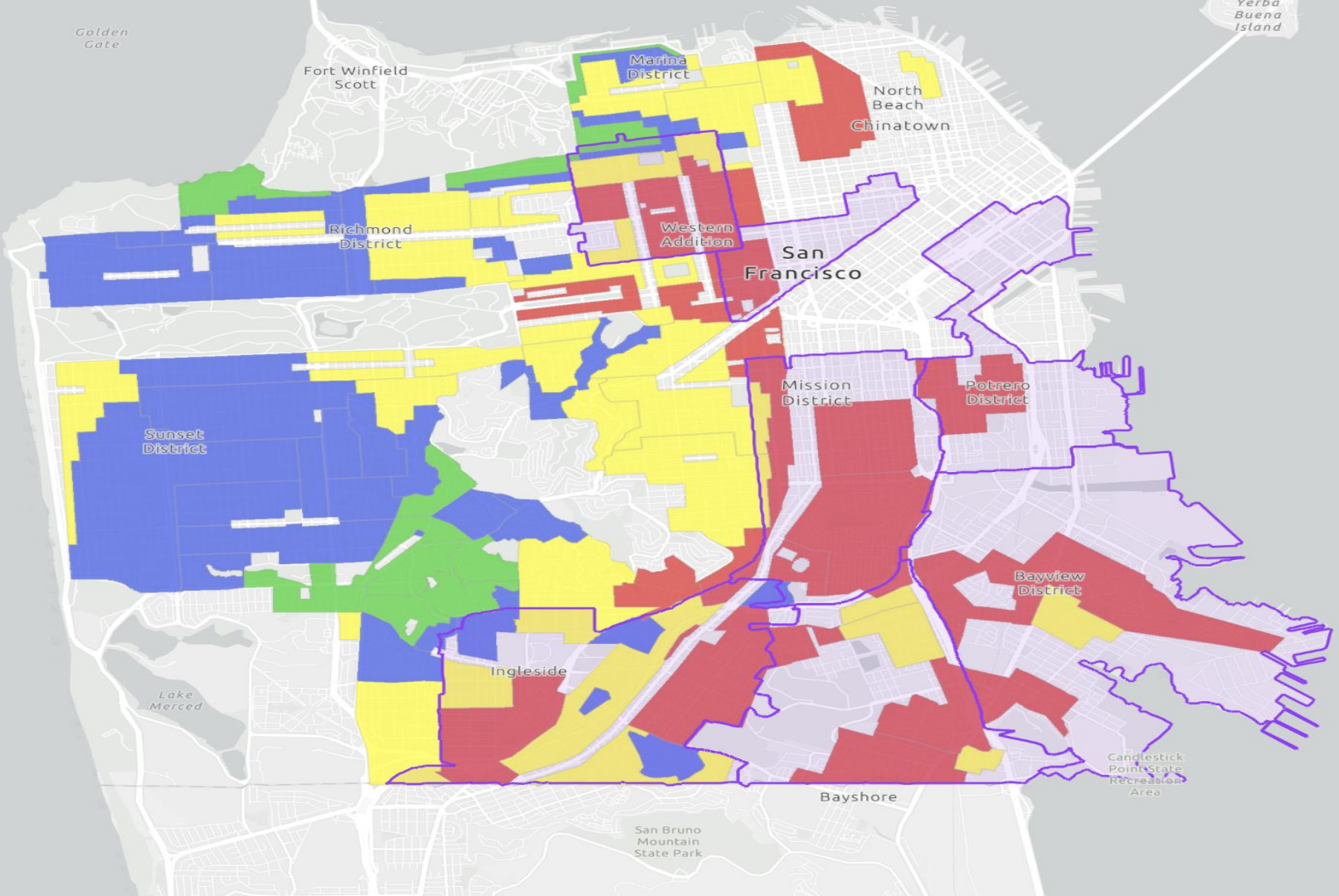
Bayshore

Candlestick Point State Recreation Area

San Bruno Mountain State Park







# Analysis: State of Black San Francisco

## Redlining Statistical Test:

Measure correlation between redlined neighborhoods and current median income

## Example Framework:

- Linear Regression, OLS robust
- Dummy variables: A, B, C, D grade
- Null Hypothesis: No Effect
- Hypothesis: Effect on median income

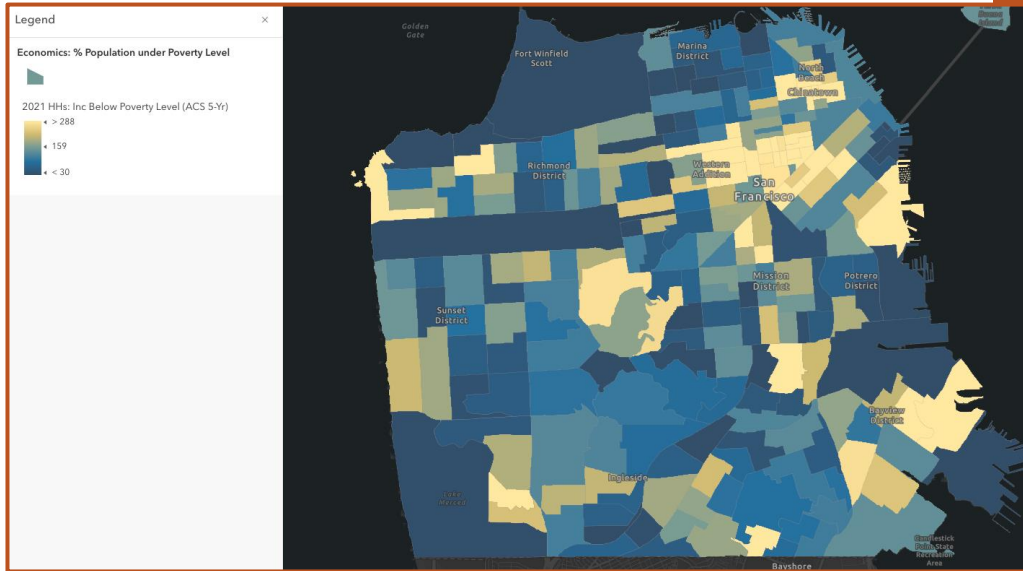
# Analysis: State of Black San Francisco

## Comparison Analysis:

Compare county metrics to census parcels

## Examples Parameters:

Median income, # in poverty, below federal poverty line, children in poverty, single parent households, # car ownership, high school graduation rate, unemployment, life expectancy, crowding, mobile homes, group quarters, multi-unit structures, age demographic spread, minority status

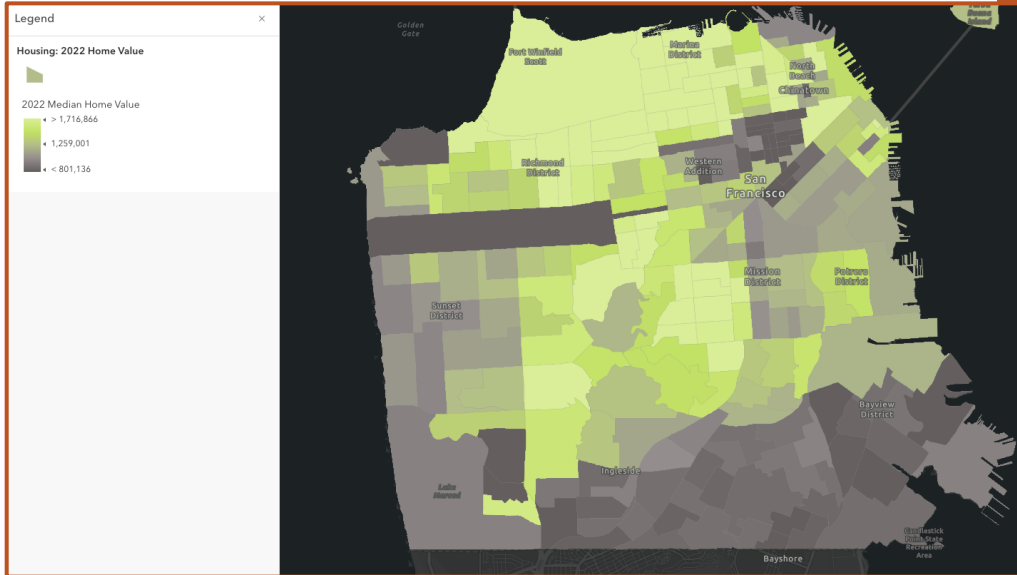


## Economics: % Population under Poverty Level

### Additional data

- HH income brackets
- median income
- #, % HH with SNAP
- average disposable income
- HHs public assistance income
- HHs below poverty level
- Unemployment rate

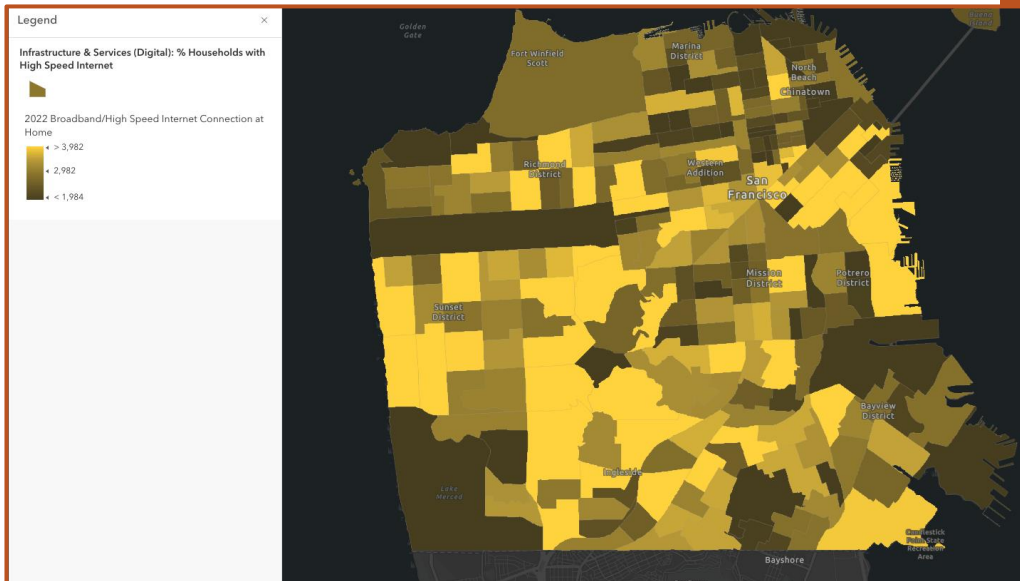




## Housing: 2022 Home Value

### Additional data

- Total HHs
- 2022 Estimated Home Value, 2027 Projected Home Value (Esri)
- 2021 Home Value
- Vacant Housing Units
- HH Average Size
- 2022 Property Tax



## Infrastructure & Services (Digital): % Households with High Speed Internet

Additional data

- % Broadband
- % Has computer
- % Has smartphone