

LOCATION OF THE TRIAL OF THE PORT CHICAGO 50

BUILDING LIST		GENERAL	
NO.	USE	NO.	USE
1	GENERAL OFFICE	101	GENERAL OFFICE
2	OFFICE	102	GENERAL OFFICE
3	OFFICE	103	GENERAL OFFICE
4	OFFICE	104	GENERAL OFFICE
5	OFFICE	105	GENERAL OFFICE
6	OFFICE	106	GENERAL OFFICE
7	OFFICE	107	GENERAL OFFICE
8	OFFICE	108	GENERAL OFFICE
9	OFFICE	109	GENERAL OFFICE
10	OFFICE	110	GENERAL OFFICE
11	OFFICE	111	GENERAL OFFICE
12	OFFICE	112	GENERAL OFFICE
13	OFFICE	113	GENERAL OFFICE
14	OFFICE	114	GENERAL OFFICE
15	OFFICE	115	GENERAL OFFICE
16	OFFICE	116	GENERAL OFFICE
17	OFFICE	117	GENERAL OFFICE
18	OFFICE	118	GENERAL OFFICE
19	OFFICE	119	GENERAL OFFICE
20	OFFICE	120	GENERAL OFFICE
21	OFFICE	121	GENERAL OFFICE
22	OFFICE	122	GENERAL OFFICE
23	OFFICE	123	GENERAL OFFICE
24	OFFICE	124	GENERAL OFFICE
25	OFFICE	125	GENERAL OFFICE
26	OFFICE	126	GENERAL OFFICE
27	OFFICE	127	GENERAL OFFICE
28	OFFICE	128	GENERAL OFFICE
29	OFFICE	129	GENERAL OFFICE
30	OFFICE	130	GENERAL OFFICE
31	OFFICE	131	GENERAL OFFICE
32	OFFICE	132	GENERAL OFFICE
33	OFFICE	133	GENERAL OFFICE
34	OFFICE	134	GENERAL OFFICE
35	OFFICE	135	GENERAL OFFICE
36	OFFICE	136	GENERAL OFFICE
37	OFFICE	137	GENERAL OFFICE
38	OFFICE	138	GENERAL OFFICE
39	OFFICE	139	GENERAL OFFICE
40	OFFICE	140	GENERAL OFFICE
41	OFFICE	141	GENERAL OFFICE
42	OFFICE	142	GENERAL OFFICE
43	OFFICE	143	GENERAL OFFICE
44	OFFICE	144	GENERAL OFFICE
45	OFFICE	145	GENERAL OFFICE
46	OFFICE	146	GENERAL OFFICE
47	OFFICE	147	GENERAL OFFICE
48	OFFICE	148	GENERAL OFFICE
49	OFFICE	149	GENERAL OFFICE
50	OFFICE	150	GENERAL OFFICE

FRESH WATER TANKS		GALT WATER TANKS	
NO.	USE	NO.	USE
1	FRESH WATER TANK	1	GALT WATER TANK
2	FRESH WATER TANK	2	GALT WATER TANK
3	FRESH WATER TANK	3	GALT WATER TANK
4	FRESH WATER TANK	4	GALT WATER TANK
5	FRESH WATER TANK	5	GALT WATER TANK
6	FRESH WATER TANK	6	GALT WATER TANK
7	FRESH WATER TANK	7	GALT WATER TANK
8	FRESH WATER TANK	8	GALT WATER TANK
9	FRESH WATER TANK	9	GALT WATER TANK
10	FRESH WATER TANK	10	GALT WATER TANK
11	FRESH WATER TANK	11	GALT WATER TANK
12	FRESH WATER TANK	12	GALT WATER TANK
13	FRESH WATER TANK	13	GALT WATER TANK
14	FRESH WATER TANK	14	GALT WATER TANK
15	FRESH WATER TANK	15	GALT WATER TANK
16	FRESH WATER TANK	16	GALT WATER TANK
17	FRESH WATER TANK	17	GALT WATER TANK
18	FRESH WATER TANK	18	GALT WATER TANK
19	FRESH WATER TANK	19	GALT WATER TANK
20	FRESH WATER TANK	20	GALT WATER TANK
21	FRESH WATER TANK	21	GALT WATER TANK
22	FRESH WATER TANK	22	GALT WATER TANK
23	FRESH WATER TANK	23	GALT WATER TANK
24	FRESH WATER TANK	24	GALT WATER TANK
25	FRESH WATER TANK	25	GALT WATER TANK
26	FRESH WATER TANK	26	GALT WATER TANK
27	FRESH WATER TANK	27	GALT WATER TANK
28	FRESH WATER TANK	28	GALT WATER TANK
29	FRESH WATER TANK	29	GALT WATER TANK
30	FRESH WATER TANK	30	GALT WATER TANK
31	FRESH WATER TANK	31	GALT WATER TANK
32	FRESH WATER TANK	32	GALT WATER TANK
33	FRESH WATER TANK	33	GALT WATER TANK
34	FRESH WATER TANK	34	GALT WATER TANK
35	FRESH WATER TANK	35	GALT WATER TANK
36	FRESH WATER TANK	36	GALT WATER TANK
37	FRESH WATER TANK	37	GALT WATER TANK
38	FRESH WATER TANK	38	GALT WATER TANK
39	FRESH WATER TANK	39	GALT WATER TANK
40	FRESH WATER TANK	40	GALT WATER TANK
41	FRESH WATER TANK	41	GALT WATER TANK
42	FRESH WATER TANK	42	GALT WATER TANK
43	FRESH WATER TANK	43	GALT WATER TANK
44	FRESH WATER TANK	44	GALT WATER TANK
45	FRESH WATER TANK	45	GALT WATER TANK
46	FRESH WATER TANK	46	GALT WATER TANK
47	FRESH WATER TANK	47	GALT WATER TANK
48	FRESH WATER TANK	48	GALT WATER TANK
49	FRESH WATER TANK	49	GALT WATER TANK
50	FRESH WATER TANK	50	GALT WATER TANK

ACREAGE		
OCCUPANT	PLANT	WATER
NAVAL RESERVATION	1420	170
MILITARY RESERVATION	150	20
MILITARY RESERVATION	150	20
TOTAL	1570	190

- GENERAL NOTES**
- ACQUISITION:** Military Reservation acquired by Executive Order of Oct. 17, 1866. Naval Reservation acquired by Executive Order of April 12, 1936 and Jan. 26, 1939.
 - BRIDGE GRANTS:** Act of Congress authorizing the construction of a bridge from San Francisco, California, to Oakland, California, by way of Yerba Buena Island, dated Feb. 20, 1933. (No. 2047, 1933-1933)
 - ELEVATIONS:** Elevations are in Feet above M.L.L.W.
 - SOUNDINGS:** Soundings are in Feet below M.L.L.W.

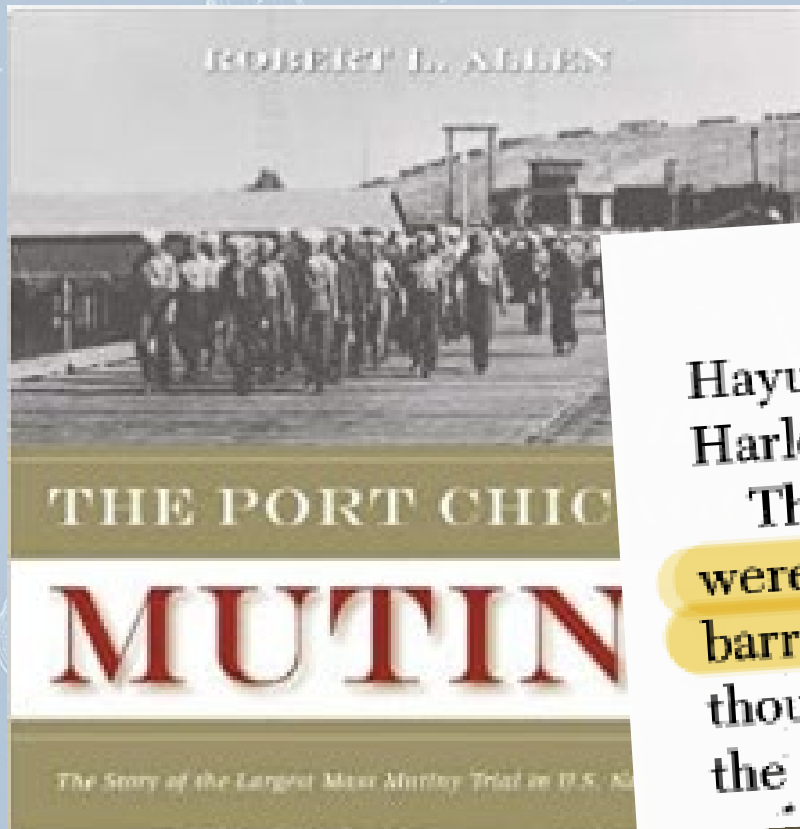
MAP OF
 U.S. RECEIVING SHIP SAN FRANCISCO
 (YERBA BUENA ISLAND)
 TWELFTH NAVAL DISTRICT
 SHOWING CONDITIONS OF
 JUNE 30, 1940

SCALE IN FEET
 CAPTAIN (J.C.) O'BANRY
 DISTRICT PUBLIC WORKS OFFICER.



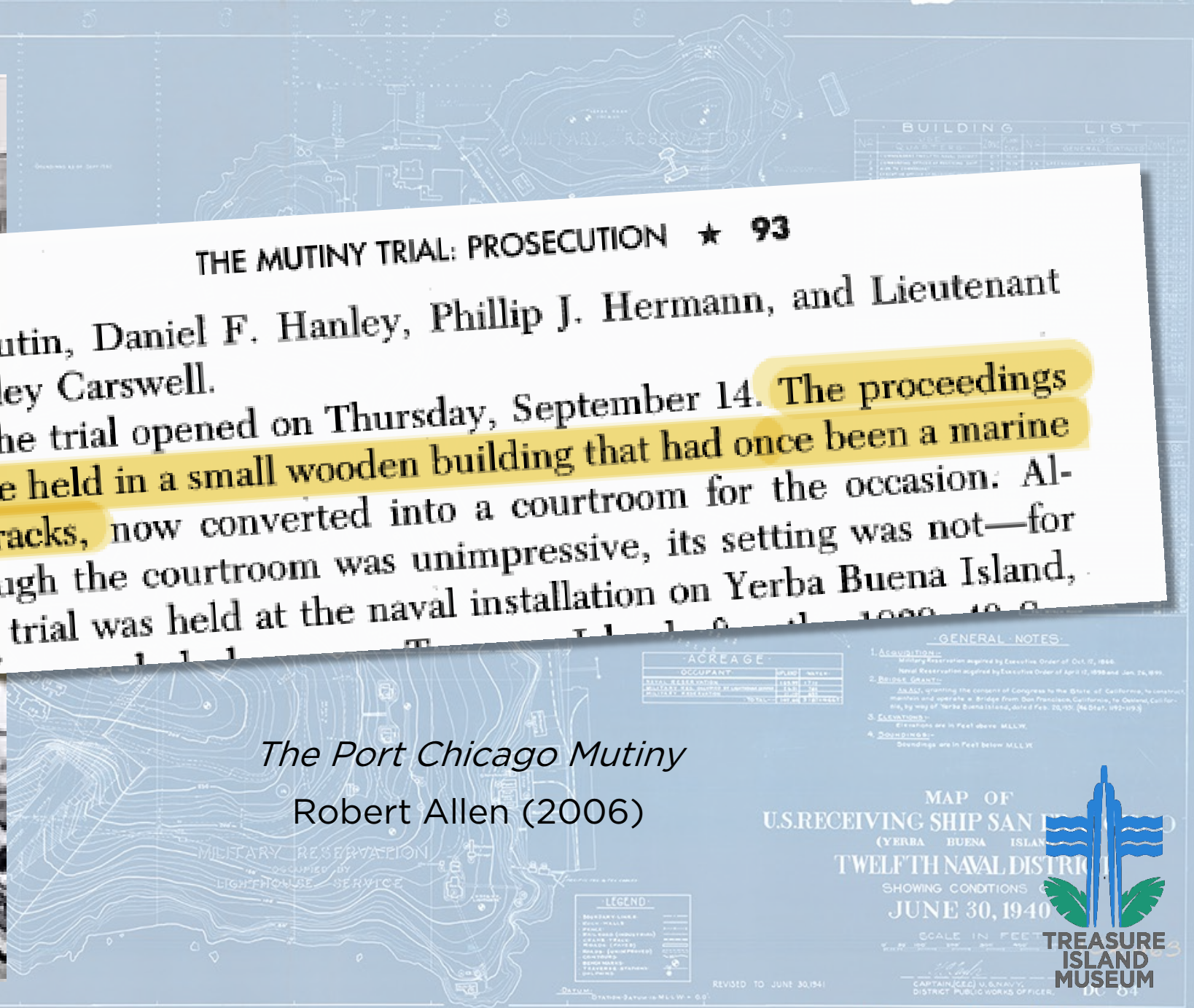
TREASURE ISLAND MUSEUM

1216 - 3 - 46



THE MUTINY TRIAL: PROSECUTION ★ 93
 Hayutin, Daniel F. Hanley, Phillip J. Hermann, and Lieutenant Harley Carswell.
 The trial opened on Thursday, September 14. The proceedings were held in a small wooden building that had once been a marine barracks, now converted into a courtroom for the occasion. Although the courtroom was unimpressive, its setting was not—for the trial was held at the naval installation on Yerba Buena Island,

The Port Chicago Mutiny
 Robert Allen (2006)



1216 - 3 - 46

San Francisco
Monarchy of
AMERICA FIRST
Exam
the Sailies
SAN FRANCISCO, FRIDAY, SEPTEMBER 15, 1944

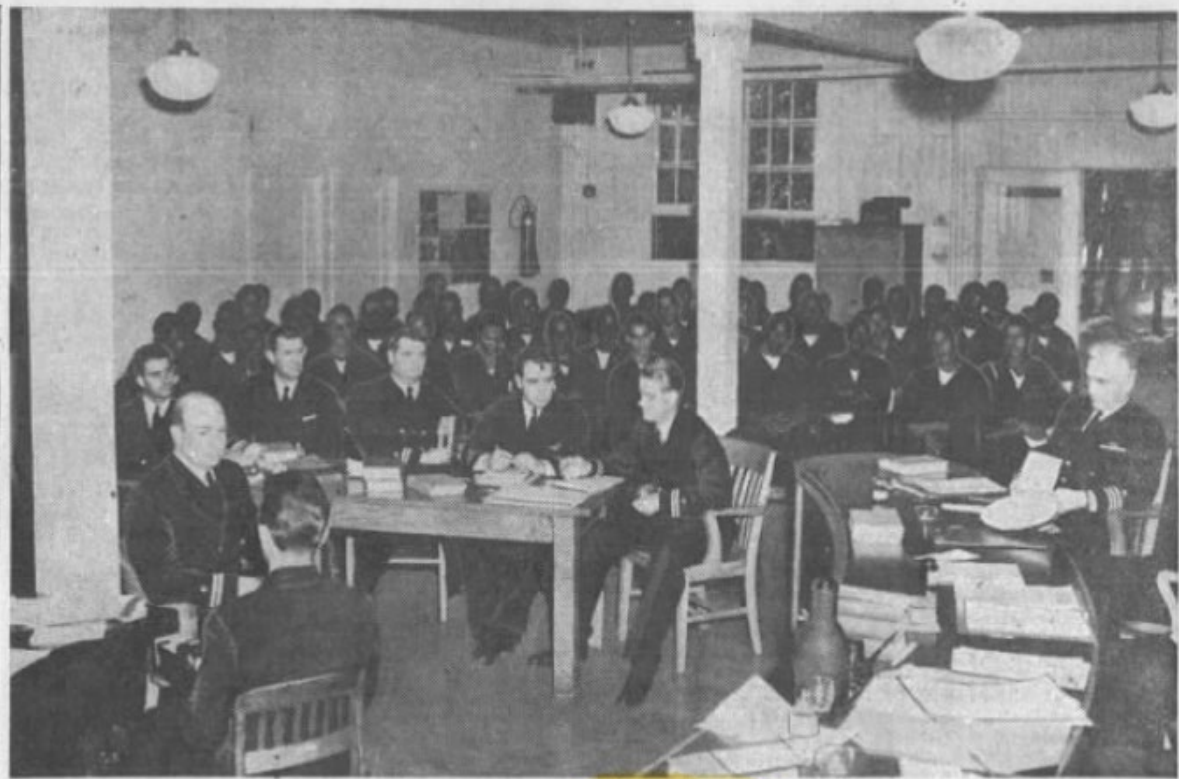
GALE HITS LAND

New Jersey
Huge Loss Reported

(12)
Press
swept up
st (Thurs-
d velocity
o 100 miles
s, tore into
oday (Fri-
n a toll of
ised wide-
ge.
assed over
ortly after
pected to
eering out

g was re-
Camp Ed-
here roofs
eral build-

also were
nt houses
ving hun-
less.
have that
northward
orth Caro-
red traffic,
nd plunged
the same
t was bat-
ricane,
violent in



COURT MARTIAL— Fifty of the defendants facing mutiny charges for failure to handle ammunition at Mare Island are shown as their trial began before a Navy general court martial yesterday on Yerba Buena.

At the table on the extreme right is Cmdr. Thomas E. Flaherty, U. S. N., retired, a member of the court. In front of the accused seamen and seated around the table are naval officers who are conducting the men's defense. —U. S. Navy photo.

Fires in Forests Still Raging
New Blaze in Mendocino; Some Under Control

Fifty on Trial For Mutiny
Mare Is. Sailors Refuse To Load Explosives

Wherein **Ross Bros** present

24 A DIE

Indiana Victims

(Pic
TERRE
14.—(AP)
Force vet
pleted up
overseas
twenty-sev
today in
passenger
train on a
north of h
including
veterans.
The sold
pletely thi
enroute to
in Florida
first three
fourteen
Eastern
which cra
and mail
ida to C
carried no
GRIM IR
Ironical
hurtle fro
collision w
soldiers.

LIST

NO.	NAME	STATUS	REMARKS
1
2
3
4
5
6
7
8
9
10
11
12
13
14
15
16
17
18
19
20
21
22
23
24

WATER TANKS

NO.	LOCATION	CAPACITY
1
2
3
4
5
6
7
8
9
10

LIGHTHOUSE SERVICE BLDGS

NO.	USE	ZONE
1
2
3
4
5
6
7
8
9
10

NOTES:
By Executive Order of Oct. 17, 1944.
By Executive Order of April 17, 1950 and Jan. 26, 1951.
Act of Congress to the State of California, to construct a lighthouse from San Francisco, California, to Oceanside, California, dated Feb. 23, 1917. (No Stat. 1917-1919.)

BENCH MARKS

NO.	ELEVATION	DESCRIPTION	REMARKS
1
2
3
4
5
6
7
8
9
10

TIDE PLANES

PLANE	ELEV.
...	...
...	...
...	...
...	...
...	...
...	...
...	...
...	...
...	...
...	...

One of two known photographs of the trial

1216 - 3 - 46



JUNE 30, 1940

SCALE IN FEET

REVISED TO JUNE 30, 1941

CAPTAIN (JG) U. S. NAVY, DISTRICT PUBLIC WORKS OFFICER

Witness Accuses Prosecutor

TREASURE ISLAND, Oct. 4.—
Testimony of a Negro sailor today precipitated a legal brawl that smashed Naval decorum in the crowded courtroom at the general court-martial building here.

Seaman Second Class Alphonse MacPherson testified that Lieutenant Commander Frank Coakley, judge advocate in the mutiny trial of the 50 Negro enlisted men on charges of refusing to load ammunition after the Port Chicago disaster, had resorted to intimidation and threats in an effort to build up his case against the seamen.

MacPherson said that Coakley had told him at Camp Shoemaker, where the alleged refusal took place,

LOS ANGELES (AP)—
a swarthy, sleepy-eyed man
mitted to the courtroom
of the court-martial
gave a testimony that
reversed the verdict
ed 17 years ago
Judge
the decision
Judges
120-witnesses
they had
proof of
murderings,
page to
the 14
details

“... the general court-martial building ...”

People's World newspaper
October 5, 1944

BUILDING LIST		GENERAL NOTES	
NO.	NAME	NO.	NAME
1	GENERAL COURT-MARTIAL BLDG.	1	GENERAL COURT-MARTIAL BLDG.
2	...	2	...
3	...	3	...
4	...	4	...
5	...	5	...
6	...	6	...
7	...	7	...
8	...	8	...
9	...	9	...
10	...	10	...
11	...	11	...
12	...	12	...
13	...	13	...
14	...	14	...
15	...	15	...
16	...	16	...
17	...	17	...
18	...	18	...
19	...	19	...
20	...	20	...
21	...	21	...
22	...	22	...
23	...	23	...
24	...	24	...
25	...	25	...
26	...	26	...
27	...	27	...
28	...	28	...
29	...	29	...
30	...	30	...
31	...	31	...
32	...	32	...
33	...	33	...
34	...	34	...
35	...	35	...
36	...	36	...
37	...	37	...
38	...	38	...
39	...	39	...
40	...	40	...
41	...	41	...
42	...	42	...
43	...	43	...
44	...	44	...
45	...	45	...
46	...	46	...
47	...	47	...
48	...	48	...
49	...	49	...
50	...	50	...
51	...	51	...
52	...	52	...
53	...	53	...
54	...	54	...
55	...	55	...
56	...	56	...
57	...	57	...
58	...	58	...
59	...	59	...
60	...	60	...
61	...	61	...
62	...	62	...
63	...	63	...
64	...	64	...
65	...	65	...
66	...	66	...
67	...	67	...
68	...	68	...
69	...	69	...
70	...	70	...
71	...	71	...
72	...	72	...
73	...	73	...
74	...	74	...
75	...	75	...
76	...	76	...
77	...	77	...
78	...	78	...
79	...	79	...
80	...	80	...
81	...	81	...
82	...	82	...
83	...	83	...
84	...	84	...
85	...	85	...
86	...	86	...
87	...	87	...
88	...	88	...
89	...	89	...
90	...	90	...
91	...	91	...
92	...	92	...
93	...	93	...
94	...	94	...
95	...	95	...
96	...	96	...
97	...	97	...
98	...	98	...
99	...	99	...
100	...	100	...

ACREAGE	
OCCUPANT	ACRES
NAVY RESERVATION	1,120.00
STATE RESERVATION	1.00
PUBLIC RESERVATION	1.00
TOTAL	1,122.00

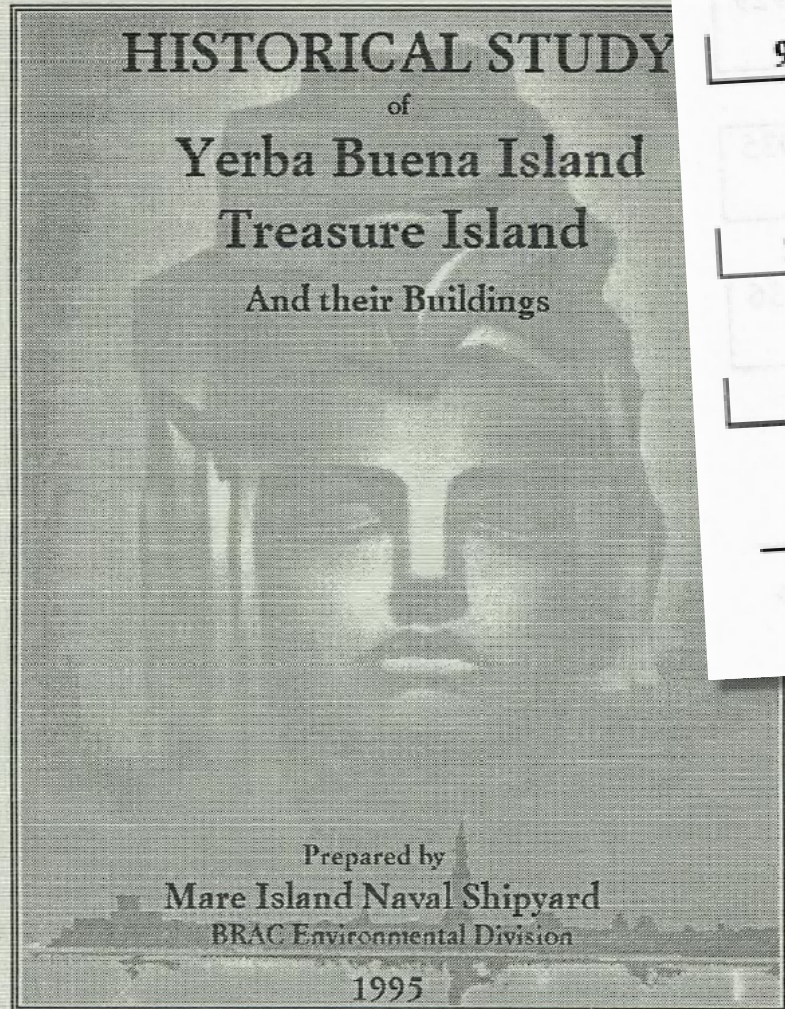
MAP OF
U.S. RECEIVING SHIP SAN FRANCISCO
(YERBA BUENA ISLAND)
TWELFTH NAVAL DISTRICT
SHOWING CONDITIONS
JUNE 30, 1940



SCALE IN FEET
1" = 100'

REVISOR TO JUNE 30, 1941
CAPTAIN (JG) U.S. NAVY
DISTRICT PUBLIC WORKS OFFICER

1216 - 3 - 46



	Uses:	1918 - ~1929	— Storehouse (lighthouse area)		
97	Map Quad:	L22	Year Built:	1920	
	Uses:	1920 - 1960	— Recreation building and gymnasium; General Court Martials and barracks	Year Demolished:	1960
98	Map Quad:	G20	Year Built:	1918	
	Uses:	1918 - ~1948	— Pump house for the seawater fire system	Year Demolished:	NLT 1948
99	Map Quad:	K21	Year Built:	1919	
	Uses:	1919 - 1936	— Drying house	Year Demolished:	1936

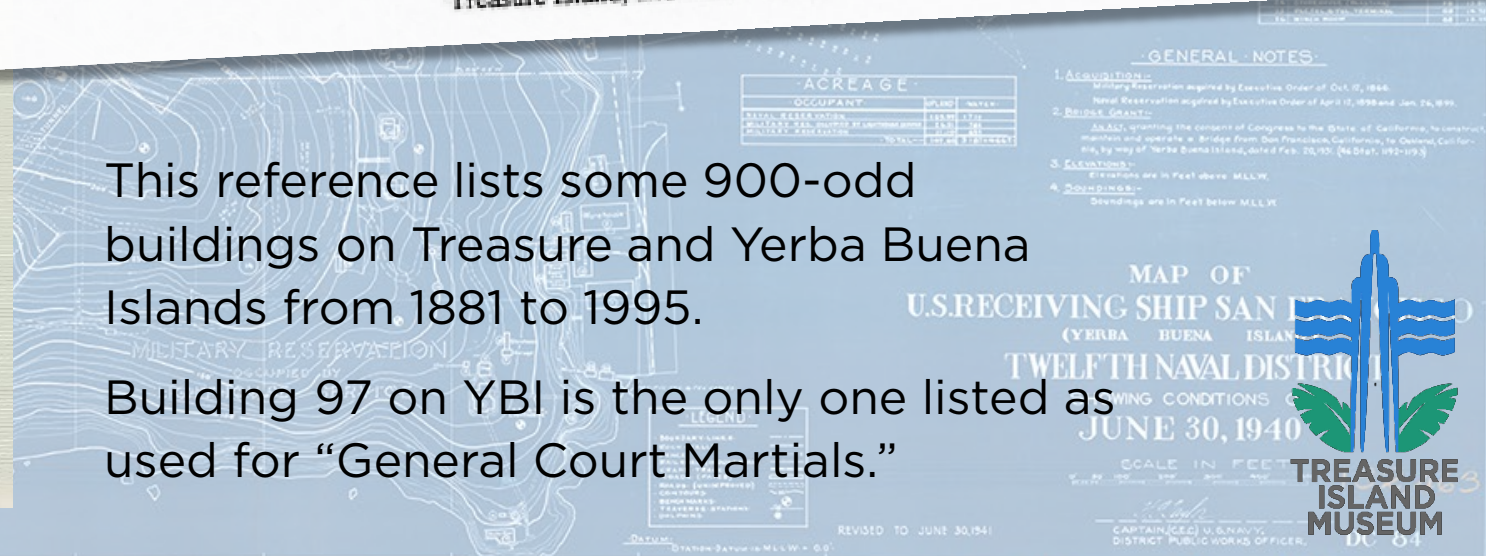
1-60

Historical Study of Yerba Buena Island,
Treasure Island, and their Buildings

September 1, 1995

This reference lists some 900-odd buildings on Treasure and Yerba Buena Islands from 1881 to 1995.

Building 97 on YBI is the only one listed as used for “General Court Martials.”



1216 - 3 - 46

DECLASSIFIED

PUBLIC WORKS OF THE NAVY DATA BOOK

BUILDINGS

NAVDOCKS P-164

92 Magazine, sml. arms

97 Barracks

Addition

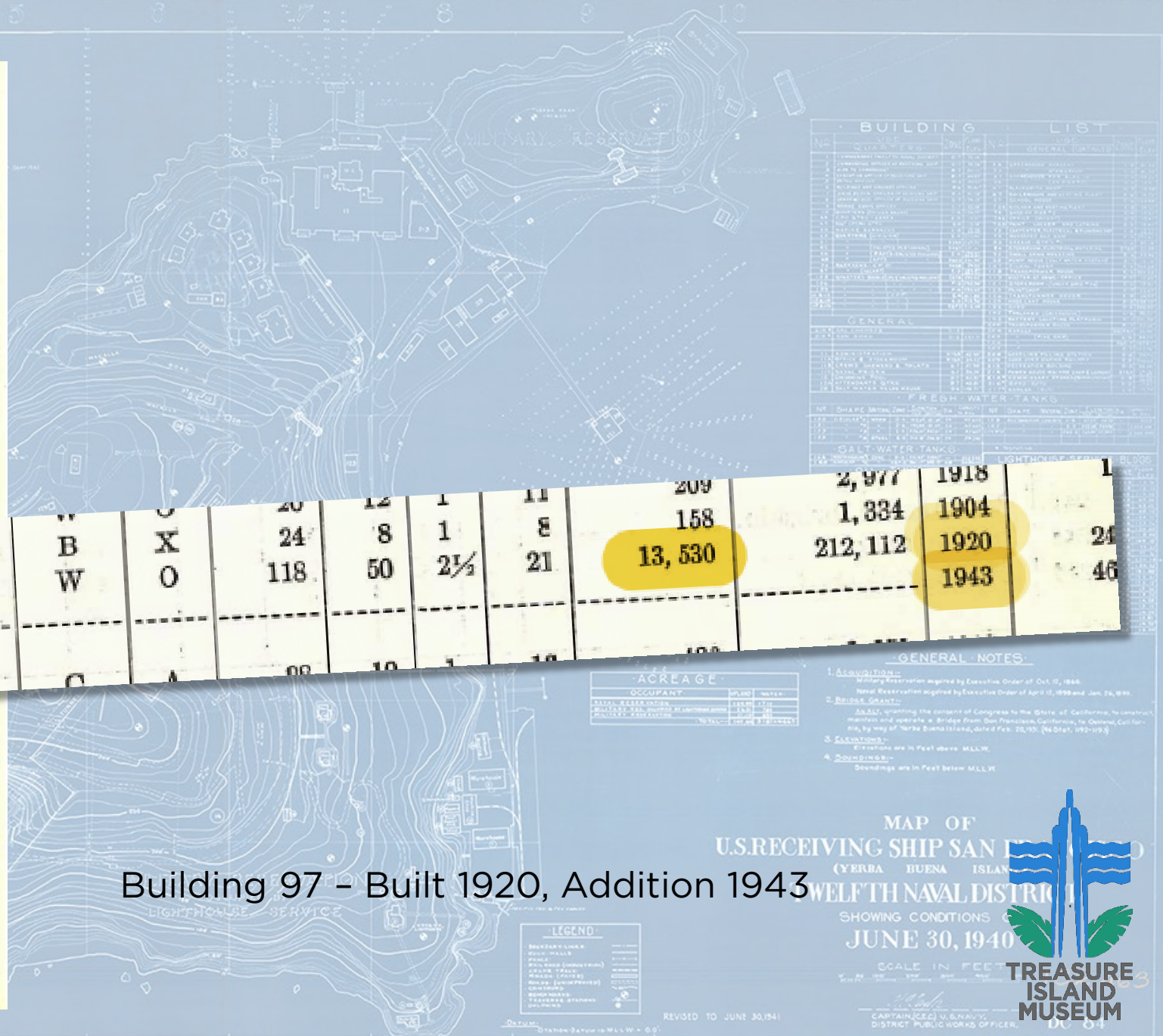
98 Pump house, salt water system

P	C	B	X	20	12	1	11	209	2,977	1918	1
P	JC	W	O	24	8	1	8	158	1,334	1904	24
				118	50	2 1/2	21	13,530	212,112	1920	46
										1943	

JULY 1945 EDITION

BUREAU OF YARDS AND DOCKS

DECLASSIFIED



BUILDING		LIST	
NO.	DESCRIPTION	NO.	DESCRIPTION
1	ADMINISTRATIVE BUILDING	1	ADMINISTRATIVE BUILDING
2	ENGINEERING OFFICE	2	ENGINEERING OFFICE
3	OFFICE BUILDING	3	OFFICE BUILDING
4	OFFICE BUILDING	4	OFFICE BUILDING
5	OFFICE BUILDING	5	OFFICE BUILDING
6	OFFICE BUILDING	6	OFFICE BUILDING
7	OFFICE BUILDING	7	OFFICE BUILDING
8	OFFICE BUILDING	8	OFFICE BUILDING
9	OFFICE BUILDING	9	OFFICE BUILDING
10	OFFICE BUILDING	10	OFFICE BUILDING
11	OFFICE BUILDING	11	OFFICE BUILDING
12	OFFICE BUILDING	12	OFFICE BUILDING
13	OFFICE BUILDING	13	OFFICE BUILDING
14	OFFICE BUILDING	14	OFFICE BUILDING
15	OFFICE BUILDING	15	OFFICE BUILDING
16	OFFICE BUILDING	16	OFFICE BUILDING
17	OFFICE BUILDING	17	OFFICE BUILDING
18	OFFICE BUILDING	18	OFFICE BUILDING
19	OFFICE BUILDING	19	OFFICE BUILDING
20	OFFICE BUILDING	20	OFFICE BUILDING
21	OFFICE BUILDING	21	OFFICE BUILDING
22	OFFICE BUILDING	22	OFFICE BUILDING
23	OFFICE BUILDING	23	OFFICE BUILDING
24	OFFICE BUILDING	24	OFFICE BUILDING
25	OFFICE BUILDING	25	OFFICE BUILDING
26	OFFICE BUILDING	26	OFFICE BUILDING
27	OFFICE BUILDING	27	OFFICE BUILDING
28	OFFICE BUILDING	28	OFFICE BUILDING
29	OFFICE BUILDING	29	OFFICE BUILDING
30	OFFICE BUILDING	30	OFFICE BUILDING
31	OFFICE BUILDING	31	OFFICE BUILDING
32	OFFICE BUILDING	32	OFFICE BUILDING
33	OFFICE BUILDING	33	OFFICE BUILDING
34	OFFICE BUILDING	34	OFFICE BUILDING
35	OFFICE BUILDING	35	OFFICE BUILDING
36	OFFICE BUILDING	36	OFFICE BUILDING
37	OFFICE BUILDING	37	OFFICE BUILDING
38	OFFICE BUILDING	38	OFFICE BUILDING
39	OFFICE BUILDING	39	OFFICE BUILDING
40	OFFICE BUILDING	40	OFFICE BUILDING
41	OFFICE BUILDING	41	OFFICE BUILDING
42	OFFICE BUILDING	42	OFFICE BUILDING
43	OFFICE BUILDING	43	OFFICE BUILDING
44	OFFICE BUILDING	44	OFFICE BUILDING
45	OFFICE BUILDING	45	OFFICE BUILDING
46	OFFICE BUILDING	46	OFFICE BUILDING
47	OFFICE BUILDING	47	OFFICE BUILDING
48	OFFICE BUILDING	48	OFFICE BUILDING
49	OFFICE BUILDING	49	OFFICE BUILDING
50	OFFICE BUILDING	50	OFFICE BUILDING
51	OFFICE BUILDING	51	OFFICE BUILDING
52	OFFICE BUILDING	52	OFFICE BUILDING
53	OFFICE BUILDING	53	OFFICE BUILDING
54	OFFICE BUILDING	54	OFFICE BUILDING
55	OFFICE BUILDING	55	OFFICE BUILDING
56	OFFICE BUILDING	56	OFFICE BUILDING
57	OFFICE BUILDING	57	OFFICE BUILDING
58	OFFICE BUILDING	58	OFFICE BUILDING
59	OFFICE BUILDING	59	OFFICE BUILDING
60	OFFICE BUILDING	60	OFFICE BUILDING
61	OFFICE BUILDING	61	OFFICE BUILDING
62	OFFICE BUILDING	62	OFFICE BUILDING
63	OFFICE BUILDING	63	OFFICE BUILDING
64	OFFICE BUILDING	64	OFFICE BUILDING
65	OFFICE BUILDING	65	OFFICE BUILDING
66	OFFICE BUILDING	66	OFFICE BUILDING
67	OFFICE BUILDING	67	OFFICE BUILDING
68	OFFICE BUILDING	68	OFFICE BUILDING
69	OFFICE BUILDING	69	OFFICE BUILDING
70	OFFICE BUILDING	70	OFFICE BUILDING
71	OFFICE BUILDING	71	OFFICE BUILDING
72	OFFICE BUILDING	72	OFFICE BUILDING
73	OFFICE BUILDING	73	OFFICE BUILDING
74	OFFICE BUILDING	74	OFFICE BUILDING
75	OFFICE BUILDING	75	OFFICE BUILDING
76	OFFICE BUILDING	76	OFFICE BUILDING
77	OFFICE BUILDING	77	OFFICE BUILDING
78	OFFICE BUILDING	78	OFFICE BUILDING
79	OFFICE BUILDING	79	OFFICE BUILDING
80	OFFICE BUILDING	80	OFFICE BUILDING
81	OFFICE BUILDING	81	OFFICE BUILDING
82	OFFICE BUILDING	82	OFFICE BUILDING
83	OFFICE BUILDING	83	OFFICE BUILDING
84	OFFICE BUILDING	84	OFFICE BUILDING
85	OFFICE BUILDING	85	OFFICE BUILDING
86	OFFICE BUILDING	86	OFFICE BUILDING
87	OFFICE BUILDING	87	OFFICE BUILDING
88	OFFICE BUILDING	88	OFFICE BUILDING
89	OFFICE BUILDING	89	OFFICE BUILDING
90	OFFICE BUILDING	90	OFFICE BUILDING
91	OFFICE BUILDING	91	OFFICE BUILDING
92	OFFICE BUILDING	92	OFFICE BUILDING
93	OFFICE BUILDING	93	OFFICE BUILDING
94	OFFICE BUILDING	94	OFFICE BUILDING
95	OFFICE BUILDING	95	OFFICE BUILDING
96	OFFICE BUILDING	96	OFFICE BUILDING
97	OFFICE BUILDING	97	OFFICE BUILDING
98	OFFICE BUILDING	98	OFFICE BUILDING
99	OFFICE BUILDING	99	OFFICE BUILDING
100	OFFICE BUILDING	100	OFFICE BUILDING

ACREAGE		
OCCUPANT	PLANT	WATER
NAVAL RESERVATION	155.00	1.70
ARMY RESERVATION	1.00	0.00
MILITARY RESERVATION	1.00	0.00
TOTAL	157.00	1.70

- GENERAL NOTES:
1. ACQUISITION: Military Reservation acquired by Executive Order of Oct. 3, 1946. Naval Reservation acquired by Executive Order of April 17, 1950 and Jan. 26, 1951.
 2. BRIDGE GRANT: Act of Congress, approved by the Senate and House of Representatives of the United States of America in Congress assembled, June 22, 1913 (37 Stat. 1024-1025).
 3. ELEVATIONS: Elevations are in Feet above MLLW.
 4. SOUNDINGS: Soundings are in Feet below MLLW.

MAP OF
U.S. RECEIVING SHIP SAN FRANCISCO
(YERBA BUENA ISLAND)
TWELFTH NAVAL DISTRICT
SHOWING CONDITIONS
JUNE 30, 1940



Building 97 - Built 1920, Addition 1943

1216 - 3 - 46



NARA - National Archives and Records Administration
College Park, MD

BUILDING LIST		LIST	
NO.	DESCRIPTION	NO.	DESCRIPTION
1	REAR BUILDING	1	REAR BUILDING
2	FRONT BUILDING	2	FRONT BUILDING
3	MIDDLE BUILDING	3	MIDDLE BUILDING
4	WEST BUILDING	4	WEST BUILDING
5	EAST BUILDING	5	EAST BUILDING
6	CENTRAL BUILDING	6	CENTRAL BUILDING
7	ADJUTANT GENERAL'S OFFICE	7	ADJUTANT GENERAL'S OFFICE
8	CHIEF OF BUREAU OFFICE	8	CHIEF OF BUREAU OFFICE
9	ADJUTANT GENERAL'S OFFICE	9	ADJUTANT GENERAL'S OFFICE
10	CHIEF OF BUREAU OFFICE	10	CHIEF OF BUREAU OFFICE
11	ADJUTANT GENERAL'S OFFICE	11	ADJUTANT GENERAL'S OFFICE
12	CHIEF OF BUREAU OFFICE	12	CHIEF OF BUREAU OFFICE
13	ADJUTANT GENERAL'S OFFICE	13	ADJUTANT GENERAL'S OFFICE
14	CHIEF OF BUREAU OFFICE	14	CHIEF OF BUREAU OFFICE
15	ADJUTANT GENERAL'S OFFICE	15	ADJUTANT GENERAL'S OFFICE
16	CHIEF OF BUREAU OFFICE	16	CHIEF OF BUREAU OFFICE
17	ADJUTANT GENERAL'S OFFICE	17	ADJUTANT GENERAL'S OFFICE
18	CHIEF OF BUREAU OFFICE	18	CHIEF OF BUREAU OFFICE
19	ADJUTANT GENERAL'S OFFICE	19	ADJUTANT GENERAL'S OFFICE
20	CHIEF OF BUREAU OFFICE	20	CHIEF OF BUREAU OFFICE
21	ADJUTANT GENERAL'S OFFICE	21	ADJUTANT GENERAL'S OFFICE
22	CHIEF OF BUREAU OFFICE	22	CHIEF OF BUREAU OFFICE
23	ADJUTANT GENERAL'S OFFICE	23	ADJUTANT GENERAL'S OFFICE
24	CHIEF OF BUREAU OFFICE	24	CHIEF OF BUREAU OFFICE
25	ADJUTANT GENERAL'S OFFICE	25	ADJUTANT GENERAL'S OFFICE
26	CHIEF OF BUREAU OFFICE	26	CHIEF OF BUREAU OFFICE
27	ADJUTANT GENERAL'S OFFICE	27	ADJUTANT GENERAL'S OFFICE
28	CHIEF OF BUREAU OFFICE	28	CHIEF OF BUREAU OFFICE
29	ADJUTANT GENERAL'S OFFICE	29	ADJUTANT GENERAL'S OFFICE
30	CHIEF OF BUREAU OFFICE	30	CHIEF OF BUREAU OFFICE
31	ADJUTANT GENERAL'S OFFICE	31	ADJUTANT GENERAL'S OFFICE
32	CHIEF OF BUREAU OFFICE	32	CHIEF OF BUREAU OFFICE
33	ADJUTANT GENERAL'S OFFICE	33	ADJUTANT GENERAL'S OFFICE
34	CHIEF OF BUREAU OFFICE	34	CHIEF OF BUREAU OFFICE
35	ADJUTANT GENERAL'S OFFICE	35	ADJUTANT GENERAL'S OFFICE
36	CHIEF OF BUREAU OFFICE	36	CHIEF OF BUREAU OFFICE
37	ADJUTANT GENERAL'S OFFICE	37	ADJUTANT GENERAL'S OFFICE
38	CHIEF OF BUREAU OFFICE	38	CHIEF OF BUREAU OFFICE
39	ADJUTANT GENERAL'S OFFICE	39	ADJUTANT GENERAL'S OFFICE
40	CHIEF OF BUREAU OFFICE	40	CHIEF OF BUREAU OFFICE
41	ADJUTANT GENERAL'S OFFICE	41	ADJUTANT GENERAL'S OFFICE
42	CHIEF OF BUREAU OFFICE	42	CHIEF OF BUREAU OFFICE
43	ADJUTANT GENERAL'S OFFICE	43	ADJUTANT GENERAL'S OFFICE
44	CHIEF OF BUREAU OFFICE	44	CHIEF OF BUREAU OFFICE
45	ADJUTANT GENERAL'S OFFICE	45	ADJUTANT GENERAL'S OFFICE
46	CHIEF OF BUREAU OFFICE	46	CHIEF OF BUREAU OFFICE
47	ADJUTANT GENERAL'S OFFICE	47	ADJUTANT GENERAL'S OFFICE
48	CHIEF OF BUREAU OFFICE	48	CHIEF OF BUREAU OFFICE
49	ADJUTANT GENERAL'S OFFICE	49	ADJUTANT GENERAL'S OFFICE
50	CHIEF OF BUREAU OFFICE	50	CHIEF OF BUREAU OFFICE

GENERAL		GENERAL	
NO.	DESCRIPTION	NO.	DESCRIPTION
1	ADJUTANT GENERAL'S OFFICE	1	ADJUTANT GENERAL'S OFFICE
2	CHIEF OF BUREAU OFFICE	2	CHIEF OF BUREAU OFFICE
3	ADJUTANT GENERAL'S OFFICE	3	ADJUTANT GENERAL'S OFFICE
4	CHIEF OF BUREAU OFFICE	4	CHIEF OF BUREAU OFFICE
5	ADJUTANT GENERAL'S OFFICE	5	ADJUTANT GENERAL'S OFFICE
6	CHIEF OF BUREAU OFFICE	6	CHIEF OF BUREAU OFFICE
7	ADJUTANT GENERAL'S OFFICE	7	ADJUTANT GENERAL'S OFFICE
8	CHIEF OF BUREAU OFFICE	8	CHIEF OF BUREAU OFFICE
9	ADJUTANT GENERAL'S OFFICE	9	ADJUTANT GENERAL'S OFFICE
10	CHIEF OF BUREAU OFFICE	10	CHIEF OF BUREAU OFFICE
11	ADJUTANT GENERAL'S OFFICE	11	ADJUTANT GENERAL'S OFFICE
12	CHIEF OF BUREAU OFFICE	12	CHIEF OF BUREAU OFFICE
13	ADJUTANT GENERAL'S OFFICE	13	ADJUTANT GENERAL'S OFFICE
14	CHIEF OF BUREAU OFFICE	14	CHIEF OF BUREAU OFFICE
15	ADJUTANT GENERAL'S OFFICE	15	ADJUTANT GENERAL'S OFFICE
16	CHIEF OF BUREAU OFFICE	16	CHIEF OF BUREAU OFFICE
17	ADJUTANT GENERAL'S OFFICE	17	ADJUTANT GENERAL'S OFFICE
18	CHIEF OF BUREAU OFFICE	18	CHIEF OF BUREAU OFFICE
19	ADJUTANT GENERAL'S OFFICE	19	ADJUTANT GENERAL'S OFFICE
20	CHIEF OF BUREAU OFFICE	20	CHIEF OF BUREAU OFFICE
21	ADJUTANT GENERAL'S OFFICE	21	ADJUTANT GENERAL'S OFFICE
22	CHIEF OF BUREAU OFFICE	22	CHIEF OF BUREAU OFFICE
23	ADJUTANT GENERAL'S OFFICE	23	ADJUTANT GENERAL'S OFFICE
24	CHIEF OF BUREAU OFFICE	24	CHIEF OF BUREAU OFFICE
25	ADJUTANT GENERAL'S OFFICE	25	ADJUTANT GENERAL'S OFFICE
26	CHIEF OF BUREAU OFFICE	26	CHIEF OF BUREAU OFFICE
27	ADJUTANT GENERAL'S OFFICE	27	ADJUTANT GENERAL'S OFFICE
28	CHIEF OF BUREAU OFFICE	28	CHIEF OF BUREAU OFFICE
29	ADJUTANT GENERAL'S OFFICE	29	ADJUTANT GENERAL'S OFFICE
30	CHIEF OF BUREAU OFFICE	30	CHIEF OF BUREAU OFFICE
31	ADJUTANT GENERAL'S OFFICE	31	ADJUTANT GENERAL'S OFFICE
32	CHIEF OF BUREAU OFFICE	32	CHIEF OF BUREAU OFFICE
33	ADJUTANT GENERAL'S OFFICE	33	ADJUTANT GENERAL'S OFFICE
34	CHIEF OF BUREAU OFFICE	34	CHIEF OF BUREAU OFFICE
35	ADJUTANT GENERAL'S OFFICE	35	ADJUTANT GENERAL'S OFFICE
36	CHIEF OF BUREAU OFFICE	36	CHIEF OF BUREAU OFFICE
37	ADJUTANT GENERAL'S OFFICE	37	ADJUTANT GENERAL'S OFFICE
38	CHIEF OF BUREAU OFFICE	38	CHIEF OF BUREAU OFFICE
39	ADJUTANT GENERAL'S OFFICE	39	ADJUTANT GENERAL'S OFFICE
40	CHIEF OF BUREAU OFFICE	40	CHIEF OF BUREAU OFFICE
41	ADJUTANT GENERAL'S OFFICE	41	ADJUTANT GENERAL'S OFFICE
42	CHIEF OF BUREAU OFFICE	42	CHIEF OF BUREAU OFFICE
43	ADJUTANT GENERAL'S OFFICE	43	ADJUTANT GENERAL'S OFFICE
44	CHIEF OF BUREAU OFFICE	44	CHIEF OF BUREAU OFFICE
45	ADJUTANT GENERAL'S OFFICE	45	ADJUTANT GENERAL'S OFFICE
46	CHIEF OF BUREAU OFFICE	46	CHIEF OF BUREAU OFFICE
47	ADJUTANT GENERAL'S OFFICE	47	ADJUTANT GENERAL'S OFFICE
48	CHIEF OF BUREAU OFFICE	48	CHIEF OF BUREAU OFFICE
49	ADJUTANT GENERAL'S OFFICE	49	ADJUTANT GENERAL'S OFFICE
50	CHIEF OF BUREAU OFFICE	50	CHIEF OF BUREAU OFFICE

- GENERAL NOTES**
1. ACQUISITION - Military Reservation acquired by Executive Order of Oct. 17, 1899. Naval Reservation acquired by Executive Order of April 17, 1909 and Jan. 26, 1911.
 2. BRIDGE GRANT - Act of Congress in the State of California, to construct, maintain and operate a Bridge from San Francisco, California, to Oakland, California, by way of Yerba Buena Island, dated Feb. 22, 1913 (46 Stat. 105-109.)
 3. ELEVATIONS - Elevations are in Feet above M.L.L.W.
 4. SOUNDINGS - Soundings are in Feet below M.L.L.W.

MAP OF RECEIVING SHIP SAN FRANCISCO (YERBA BUENA ISLAND) TWELFTH NAVAL DISTRICT SHOWING CONDITIONS JUNE 30, 1940

SCALE IN FEET

REVISOR TO JUNE 30, 1941

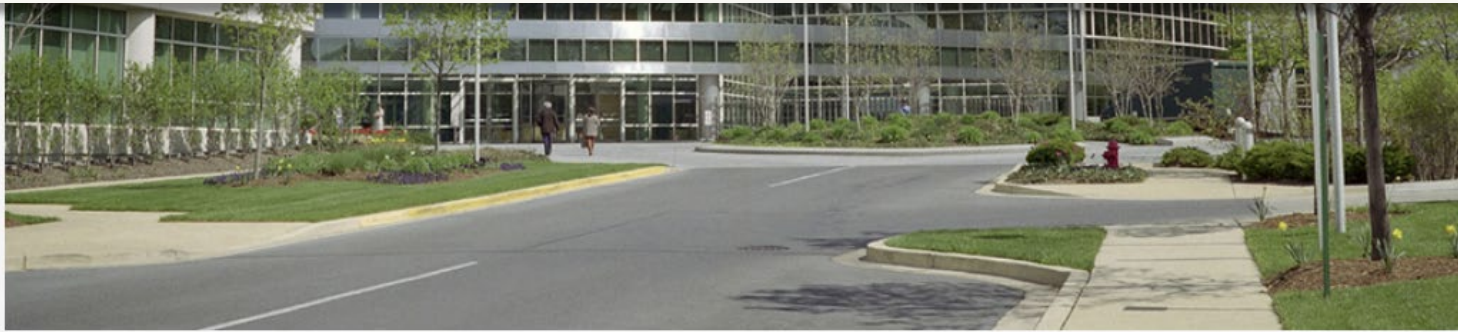
CAPTAIN (JG) U.S. NAVY, DISTRICT PUBLIC WORKS OFFICER

1216 - 3 - 46



BUILDING LIST		LIST	
NO.	DESCRIPTION	NO.	DESCRIPTION
1	RESEARCH ROOMS	1	RESEARCH ROOMS
2	RESEARCH ROOMS	2	RESEARCH ROOMS
3	RESEARCH ROOMS	3	RESEARCH ROOMS
4	RESEARCH ROOMS	4	RESEARCH ROOMS
5	RESEARCH ROOMS	5	RESEARCH ROOMS
6	RESEARCH ROOMS	6	RESEARCH ROOMS
7	RESEARCH ROOMS	7	RESEARCH ROOMS
8	RESEARCH ROOMS	8	RESEARCH ROOMS
9	RESEARCH ROOMS	9	RESEARCH ROOMS
10	RESEARCH ROOMS	10	RESEARCH ROOMS
11	RESEARCH ROOMS	11	RESEARCH ROOMS
12	RESEARCH ROOMS	12	RESEARCH ROOMS
13	RESEARCH ROOMS	13	RESEARCH ROOMS
14	RESEARCH ROOMS	14	RESEARCH ROOMS
15	RESEARCH ROOMS	15	RESEARCH ROOMS
16	RESEARCH ROOMS	16	RESEARCH ROOMS
17	RESEARCH ROOMS	17	RESEARCH ROOMS
18	RESEARCH ROOMS	18	RESEARCH ROOMS
19	RESEARCH ROOMS	19	RESEARCH ROOMS
20	RESEARCH ROOMS	20	RESEARCH ROOMS

The research rooms at the National Archives at College Park are closed due to an increase in COVID-19 cases. Once public health conditions improve and we are able to reopen the research room we will update our website with additional information.



- GENERAL NOTES**
1. ACQUISITIONS - Military Reservation acquired by Executive Order of Oct. 17, 1846. Naval Reservation acquired by Executive Order of April 17, 1898 and Jan. 26, 1899.
 2. BRIDGE GRANTS - Act of Congress to the State of California, to construct, maintain and operate a Bridge from San Francisco, California, to Oakland, California, by way of Yerba Buena Island, dated Feb. 22, 1917. (No Stat. 1917-1918)
 3. ELEVATIONS - Elevations are in Feet above MLLW.
 4. SOUNDINGS - Soundings are in Feet below MLLW.

NARA - National Archives and Records Administration
College Park, MD

MAP OF RECEIVING SHIP SAN FRANCISCO (YERBA BUENA ISLAND) TWELFTH NAVAL DISTRICT SHOWING CONDITIONS JUNE 30, 1940

SCALE IN FEET
REVISOR: JUNE 30, 1941
CAPTAIN (JG) U.S. NAVY, DISTRICT PUBLIC WORKS OFFICER

1216 - 3 - 46

BOILER ROOM PLAN
SCALE 1/8"=1'-0"

SCALE 1/8"=1'-0"

REVISION DATE

BRIEF

Designed by BENNETT
 Drawn by A. J. B.
 Checked by [Signature]
 Project Supv [Signature]
 Chief Drftm. [Signature]
 Design Mgr. [Signature]

NAVAL OPERATING BASE, SAN FRANCISCO, CALIF.
 TWELFTH NAVAL DISTRICT
RECEIVING SHIP
YERBA BUENA ISLAND
 SAN FRANCISCO BAY, CALIFORNIA.

Y. & D. Drawing No.
 307230
 of Specification No.
 12082

EXTENSION TO BLDG #97
 PLANS AND SECTIONS

Sheet of
 accompanying Contract
 No. OY 7228

Approved 10-21-1943 [Signature]

D. P. W. Drawing No.
 DB-12046

Public Works Officer

1916-34-781

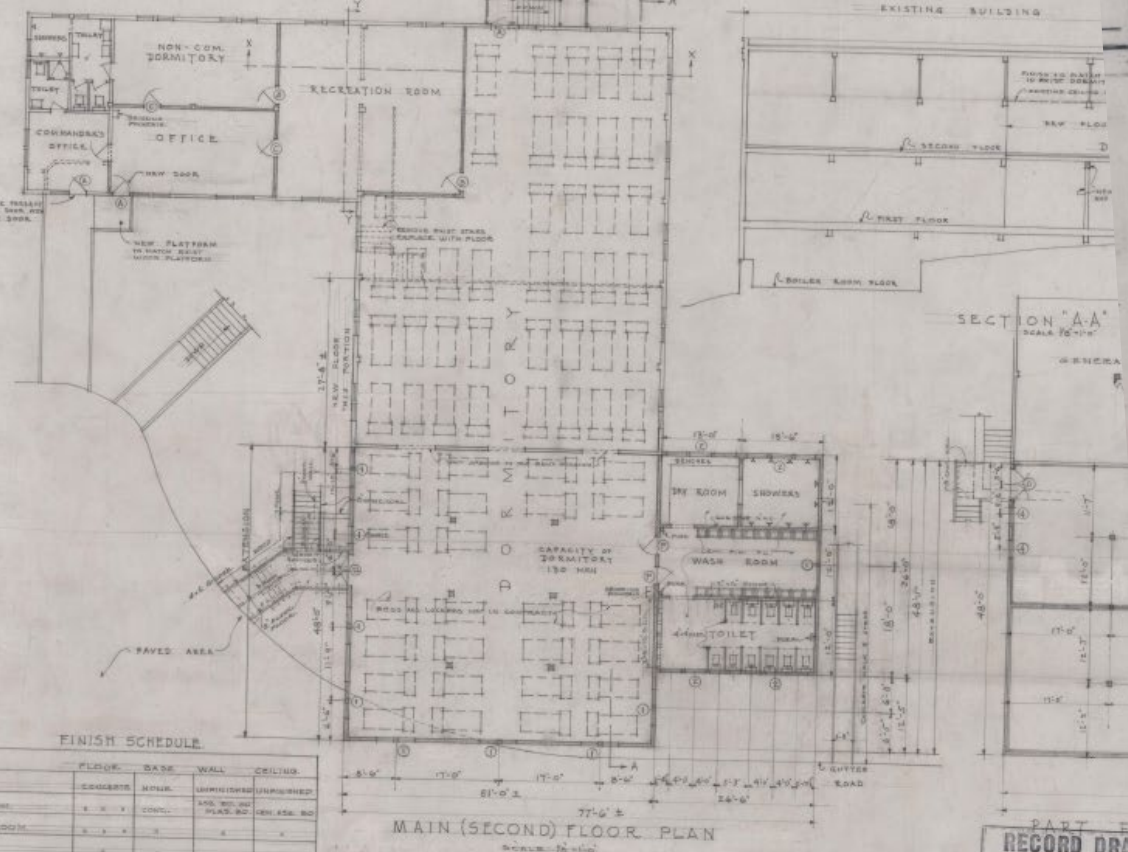
OCCUPANCY	FLOOR	WATER
RECEIVING SHIP	1ST	17.0'
RECEIVING SHIP	2ND	17.0'
RECEIVING SHIP	3RD	17.0'
TOTAL FLOOR 3 FLOORS		

1. **RESERVATION:** Naval Reservation acquired by Executive Order of Oct. 15, 1944.
2. **BRIDGE GRANT:** Naval Reservation acquired by Executive Order of April 17, 1950 and Jan. 26, 1951.
3. **ELEVATIONS:** Elevations are in Feet above M.L.L.W.
4. **DOOR DIMENSIONS:** Door dimensions are in Feet below M.L.L.W.

MAP OF
 U.S. RECEIVING SHIP SAN FRANCISCO
 (YERBA BUENA ISLAND)
 TWELFTH NAVAL DISTRICT
 SHOWING CONDITIONS
 JUNE 30, 1940



REVISÉ TO JUNE 30, 1941
 CAPTAIN (JG) U.S. NAVY,
 DISTRICT PUBLIC WORKS OFFICER



FINISH SCHEDULE

FLOOR	BASE	WALL	CILING
BOILER ROOM	CONCRETE	PLASTER	UNFINISHED
RECREATION ROOM	WOOD	WOOD	WOOD
OFFICE	WOOD	WOOD	WOOD
NON-COM. SANITARY	WOOD	WOOD	WOOD
GENERAL COURT	WOOD	WOOD	WOOD
BOILER ROOM	CONCRETE	PLASTER	UNFINISHED

MAIN (SECOND) FLOOR PLAN
 SCALE 1/8"=1'-0"

PART FIRST FLOOR
 RECORD DRAWING
 SHEET 7 OF 16
 SEE LETTER NOV. 23, 1940 DATED 3/2/46

WINDOW SCHEDULE

NO.	TYPE	SIZE	FINISH
1	DOUBLE	4'-0" x 6'-0"	WOOD
2	DOUBLE	4'-0" x 6'-0"	WOOD
3	DOUBLE	4'-0" x 6'-0"	WOOD

DOOR SCHEDULE

NO.	TYPE	FINISH
A	DOUBLE	WOOD
B	DOUBLE	WOOD
C	DOUBLE	WOOD

REVISION DATE

Designed by BENNETT
 Drawn by A. J. B.
 Checked by [Signature]
 Project Supv [Signature]
 Chief Drftm. [Signature]
 Design Mgr. [Signature]

Y. & D. Drawing No.
 307230
 of Specification No.
 12082

Sheet of
 accompanying Contract
 No. OY 7228

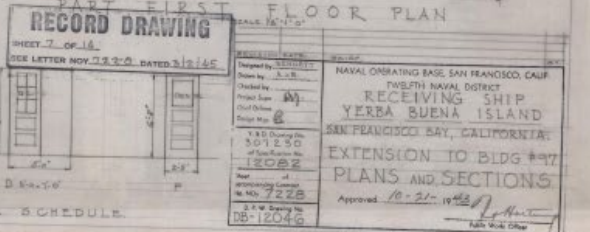
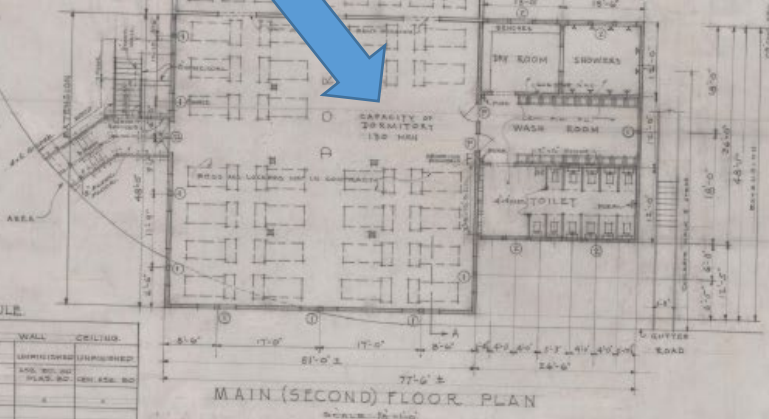
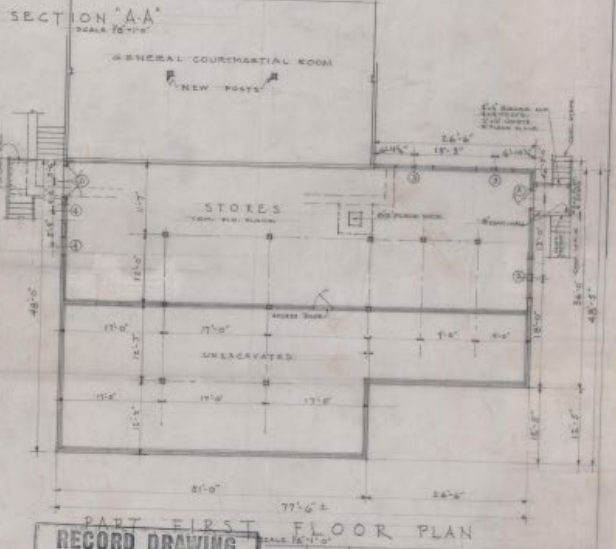
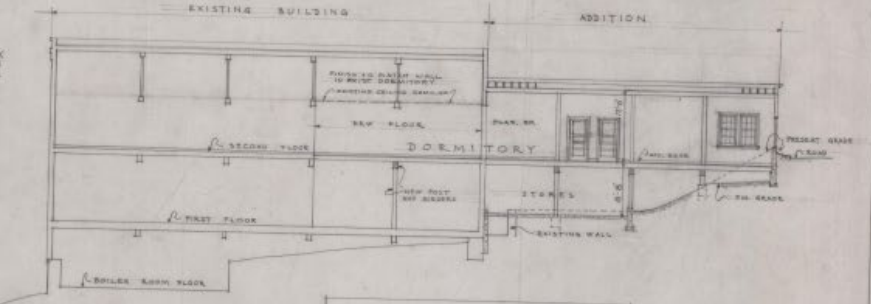
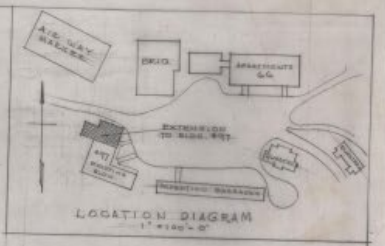
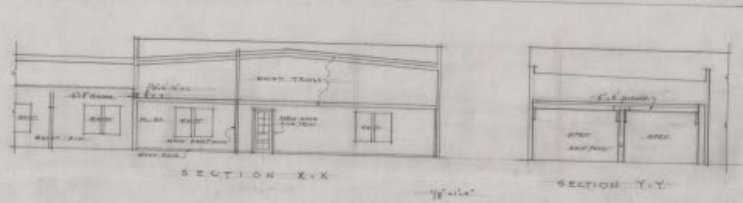
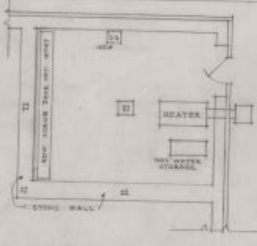
D. P. W. Drawing No.
 DB-12046

Approved 10-21-1943 [Signature]
 Public Works Officer

1216-34-781

1216 - 3 - 46

CAPACITY OF DORMITORY 130 MEN



FINISH SCHEDULE

FLOOR	BASE	WALL	CILING
ROCKS	CONCRETE	PLASTER	UNPAINTED
DRY ROOM	WOOD PL.	CONC.	PLASTER
WASH ROOM	WOOD PL.	CONC.	PLASTER
TOILET	WOOD PL.	CONC.	PLASTER
ENCL. DORMITORY	WOOD PL.	CONC.	PLASTER
REAR PORTION	WOOD PL.	CONC.	PLASTER
SEPARATION	WOOD PL.	CONC.	PLASTER
OFFICE	WOOD PL.	CONC.	PLASTER
ENCL. DORMITORY	WOOD PL.	CONC.	PLASTER
GENERAL COURT	WOOD PL.	CONC.	PLASTER
REST ROOM	WOOD PL.	CONC.	PLASTER
BOILER ROOM	WOOD PL.	CONC.	PLASTER

WINDOW SCHEDULE

DOOR SCHEDULE

NO.	TYPE	FINISH
A	6'-0" x 6'-0"	WOOD
B	6'-0" x 6'-0"	WOOD
C	6'-0" x 6'-0"	WOOD
D	6'-0" x 6'-0"	WOOD
E	6'-0" x 6'-0"	WOOD
F	6'-0" x 6'-0"	WOOD

BUILDING LIST

NO.	DESCRIPTION	ZONE	NO.	DESCRIPTION	ZONE
1	REAR PORTION	1	1	REAR PORTION	1
2	ENCL. DORMITORY	1	2	ENCL. DORMITORY	1
3	GENERAL COURT	1	3	GENERAL COURT	1
4	REST ROOM	1	4	REST ROOM	1
5	BOILER ROOM	1	5	BOILER ROOM	1
6	OFFICE	1	6	OFFICE	1
7	SEPARATION	1	7	SEPARATION	1
8	REAR PORTION	1	8	REAR PORTION	1
9	ENCL. DORMITORY	1	9	ENCL. DORMITORY	1
10	GENERAL COURT	1	10	GENERAL COURT	1
11	REST ROOM	1	11	REST ROOM	1
12	BOILER ROOM	1	12	BOILER ROOM	1
13	OFFICE	1	13	OFFICE	1
14	SEPARATION	1	14	SEPARATION	1
15	REAR PORTION	1	15	REAR PORTION	1
16	ENCL. DORMITORY	1	16	ENCL. DORMITORY	1
17	GENERAL COURT	1	17	GENERAL COURT	1
18	REST ROOM	1	18	REST ROOM	1
19	BOILER ROOM	1	19	BOILER ROOM	1
20	OFFICE	1	20	OFFICE	1
21	SEPARATION	1	21	SEPARATION	1
22	REAR PORTION	1	22	REAR PORTION	1
23	ENCL. DORMITORY	1	23	ENCL. DORMITORY	1
24	GENERAL COURT	1	24	GENERAL COURT	1
25	REST ROOM	1	25	REST ROOM	1
26	BOILER ROOM	1	26	BOILER ROOM	1
27	OFFICE	1	27	OFFICE	1
28	SEPARATION	1	28	SEPARATION	1
29	REAR PORTION	1	29	REAR PORTION	1
30	ENCL. DORMITORY	1	30	ENCL. DORMITORY	1

GENERAL

FRESH WATER TANKS

GALT WATER TANKS

MILITARY RESERVATION BLDGS

POSTAL TELEGRAPH

PACIFIC GAS & ELECTRIC COMPANY

PACIFIC TEL & TEL

GENERAL NOTES

ACREAGE

MAP OF U.S. RECEIVING SHIP SAN FRANCISCO (YERBA BUENA ISLAND) TWELFTH NAVAL DISTRICT SHOWING CONDITIONS JUNE 30, 1940

SCALE IN FEET

REVISOR TO JUNE 30, 1941

CAPTAIN (JG) U.S. NAVY, DISTRICT PUBLIC WORKS OFFICER

TREASURE ISLAND MUSEUM

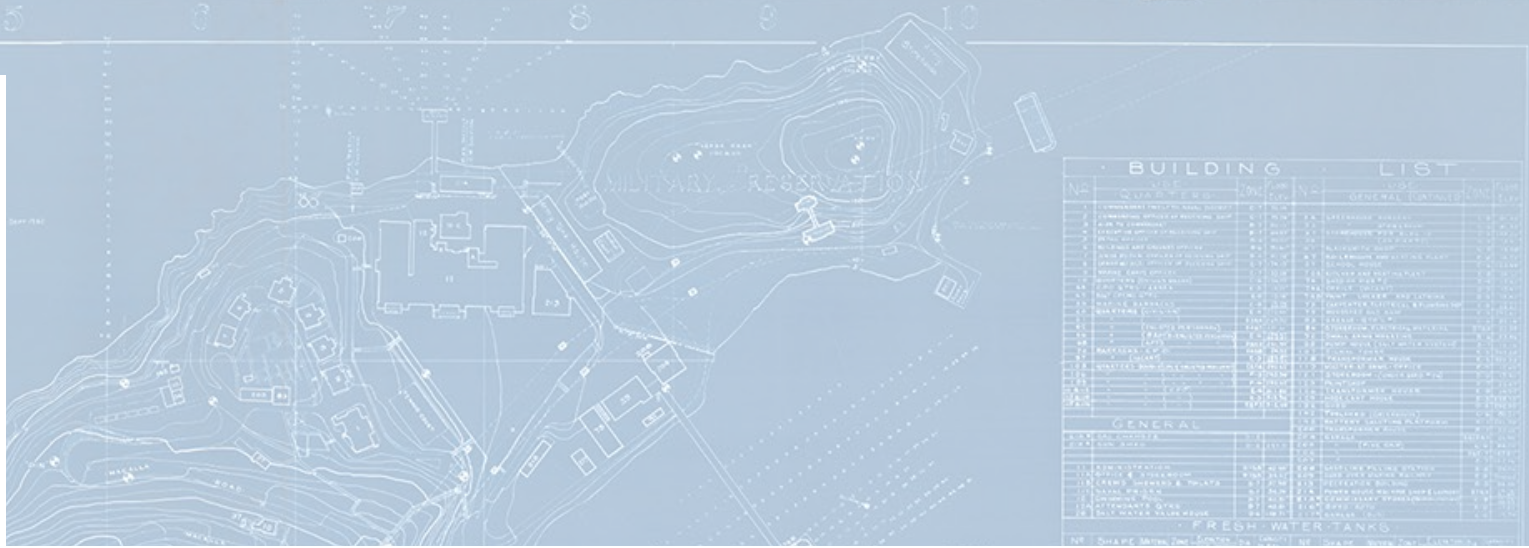
1216-34-781

1216-3-46



The Naval History TREASURE ISLAND

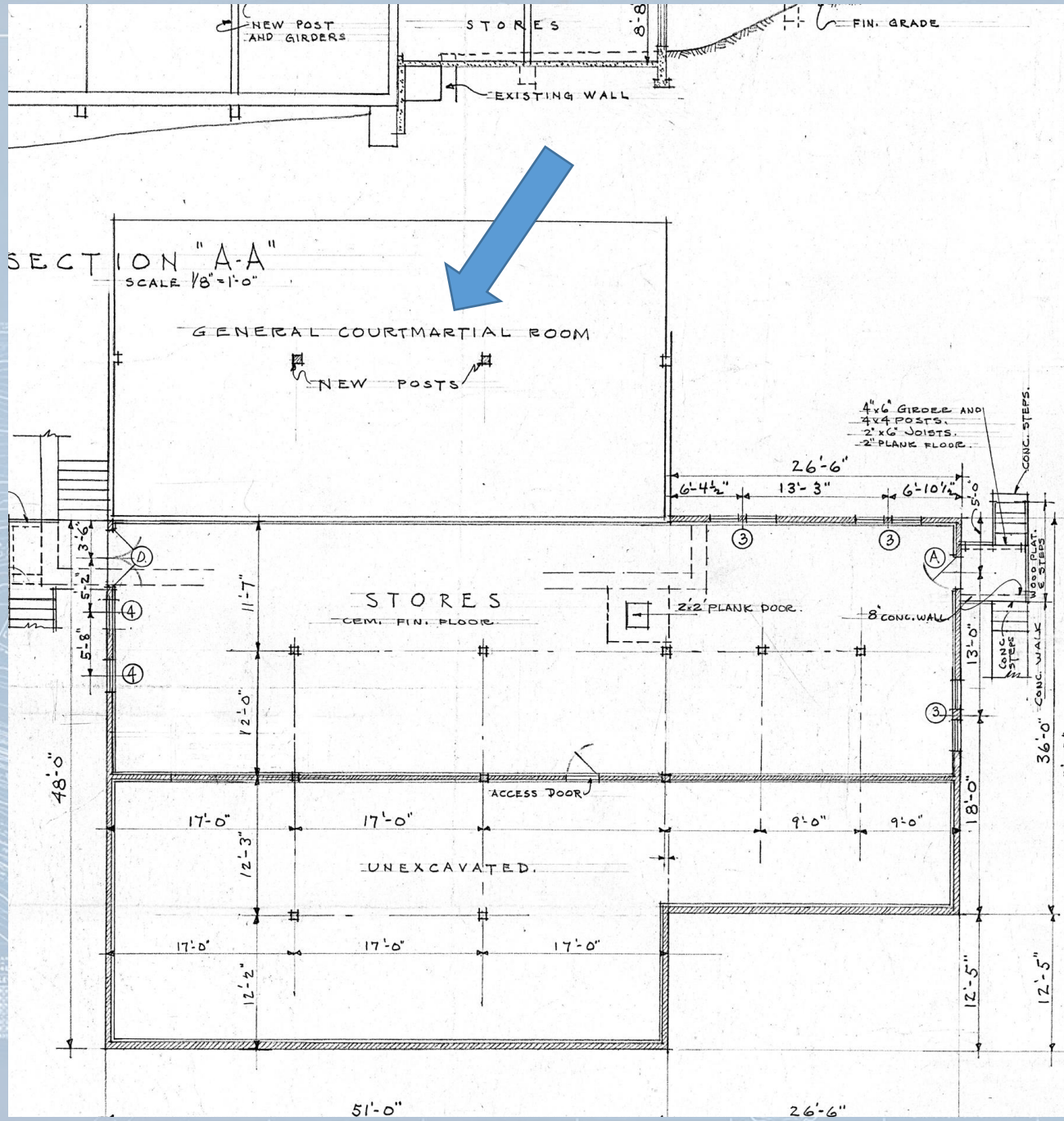
in the summer of 1944, Marine Barracks were consolidated on Treasure Island, the responsibility for the security of the Detention Barracks on Yerba Buena Island was added.



MAP OF
U.S. RECEIVING SHIP SAN FRANCISCO
(YERBA BUENA ISLAND)
TWELFTH NAVAL DISTRICT
SHOWING CONDITIONS
JUNE 30, 1941
SCALE IN FEET
REVISOR TO JUNE 30, 1941
CAPTAIN (JG) U.S. NAVY,
DISTRICT PUBLIC WORKS OFFICER.

TREASURE ISLAND MUSEUM

1216 - 3 - 46



BENCH MARKS

NO.	DESCRIPTION	ELEVATION	REMARKS
1
2
3
4
5
6
7
8
9
10
11
12
13
14
15
16
17
18
19
20
21
22
23
24
25
26
27
28
29
30

TIDE PLANS

PLANE	ELEVATION	REMARKS
1
2
3
4
5
6
7
8
9
10
11
12
13
14
15
16
17
18
19
20
21
22
23
24
25
26
27
28
29
30

BUILDING LIST

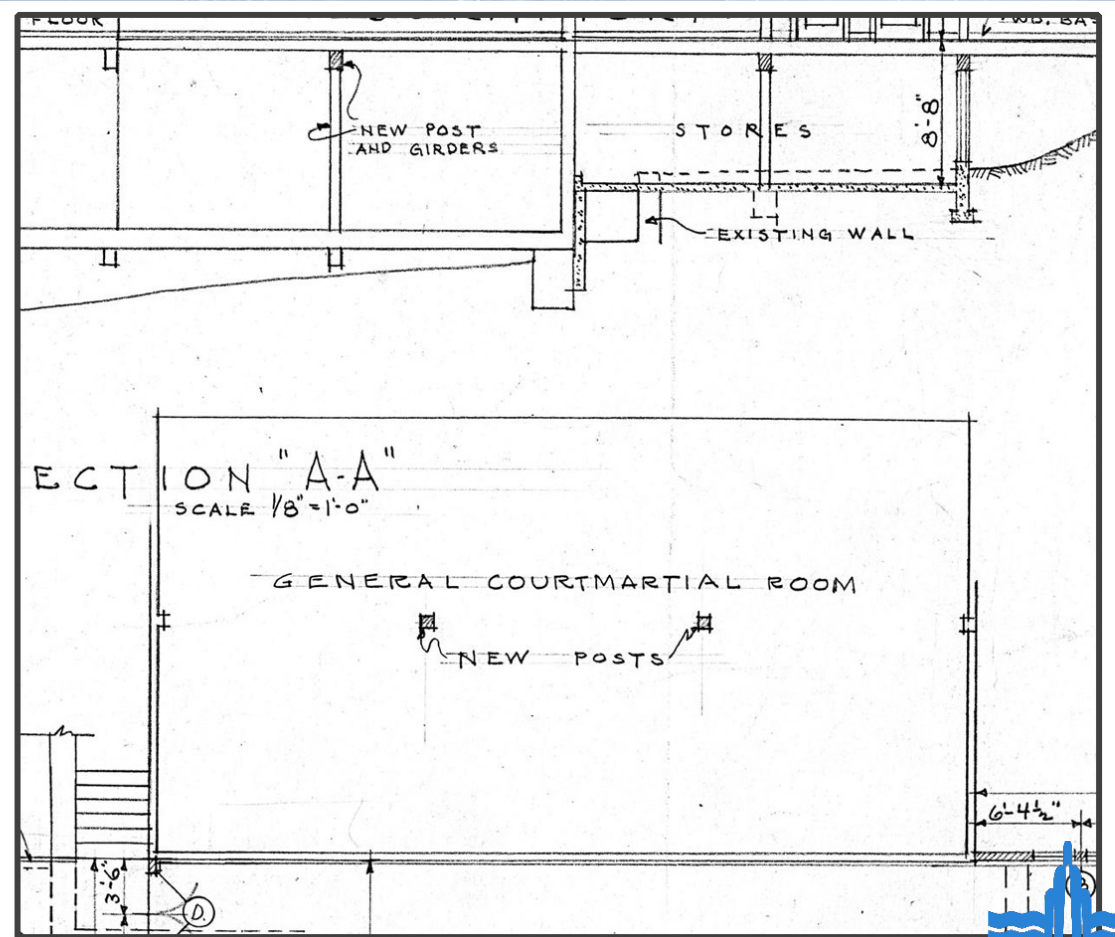
NO.	NAME	DATE	GENERAL DATA	COND.	REMARKS
1
2
3
4
5
6
7
8
9
10
11
12
13
14
15
16
17
18
19
20
21
22
23
24
25
26
27
28
29
30

- GENERAL NOTES**
1. ACQUISITION: Military Reservation acquired by Executive Order of Oct. 3, 1946. Naval Reservation acquired by Executive Order of April 17, 1950 and Jan. 26, 1951.
 2. BRIDGE GRANTS: BRAC, granting the citizens of the State of California, to construct, maintain and operate a bridge from San Francisco, California, to Oahu, California, by way of the Bona Islands, dated Feb. 20, 1913. (No Stat. 1913-1915)
 3. ELEVATIONS: Elevations are in Feet above MLLW.
 4. DIMENSIONS: Dimensions are in Feet below MLLW.

MAP OF
U.S. RECEIVING SHIP SAN FRANCISCO
 (YERBA BUENA ISLAND)
TWELFTH NAVAL DISTRICT
 SHOWING CONDITIONS
JUNE 30, 1940

SCALE IN FEET
 CAPTAIN (JG) U.S. NAVY
 DISTRICT PUBLIC WORKS OFFICER

1216 - 3 - 46



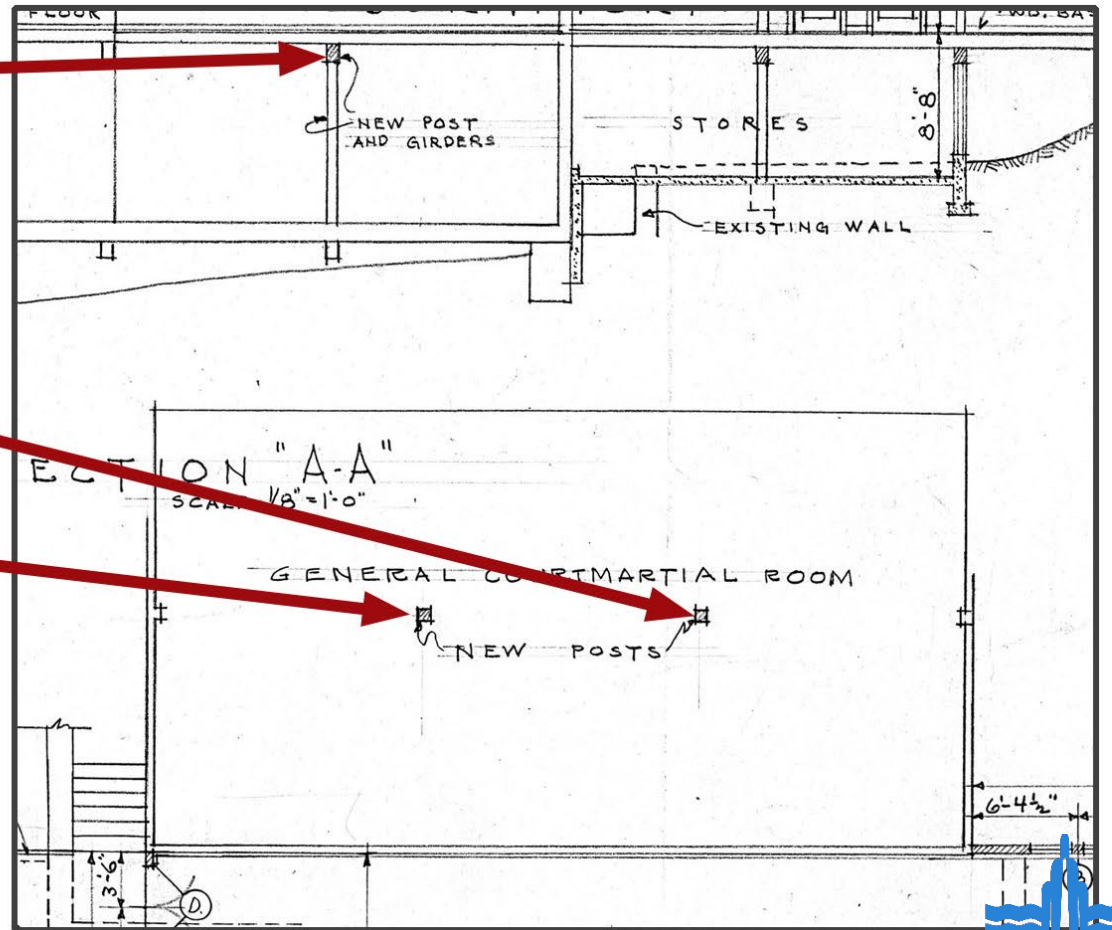
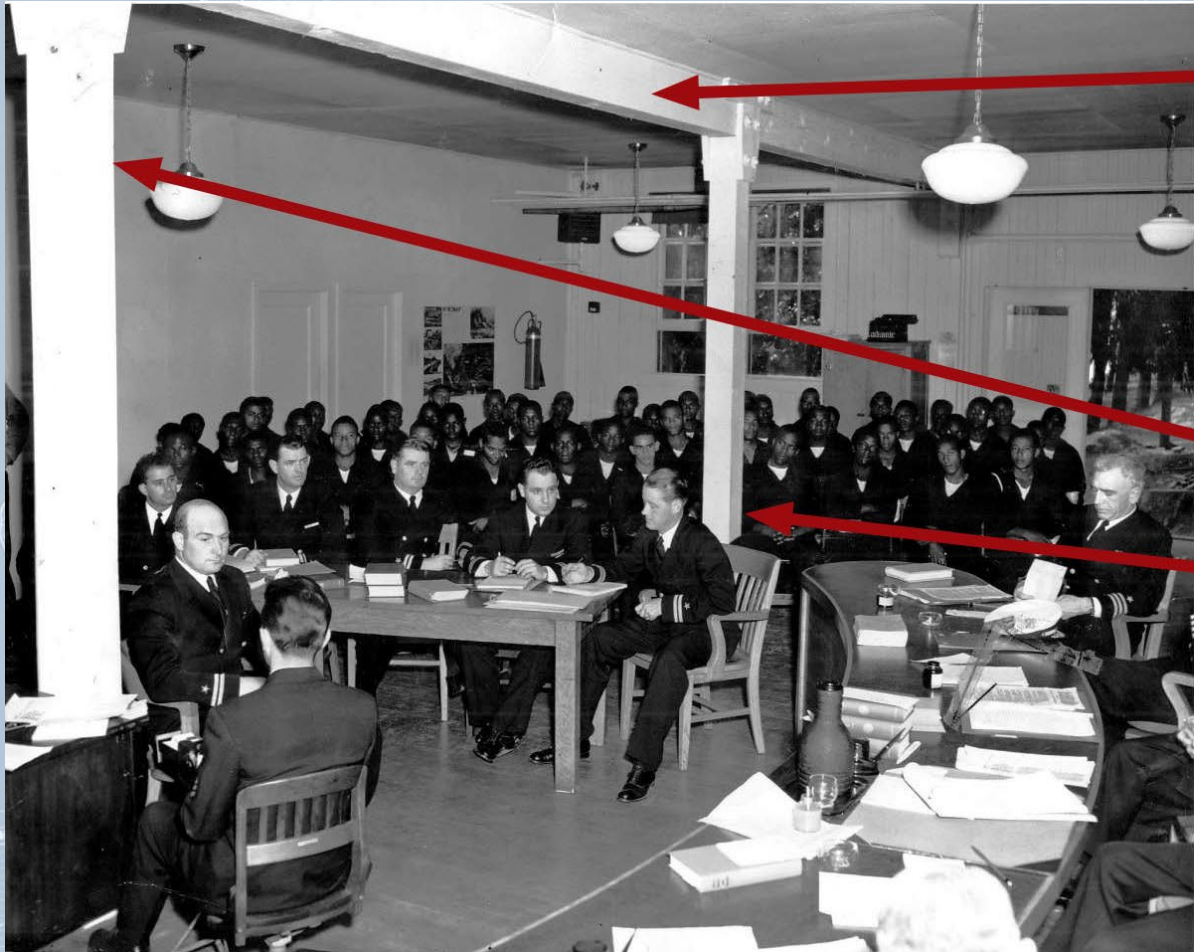
General Courtmartial Room and Trial Photo

TWELFTH NAVAL DISTRICT
SHOWING CONDITIONS
JUNE 30, 1940



REVISOR
CAPTAIN (JG) U.S. NAVY
DISTRICT PUBLIC WORKS OFFICER

1216 - 3 - 46



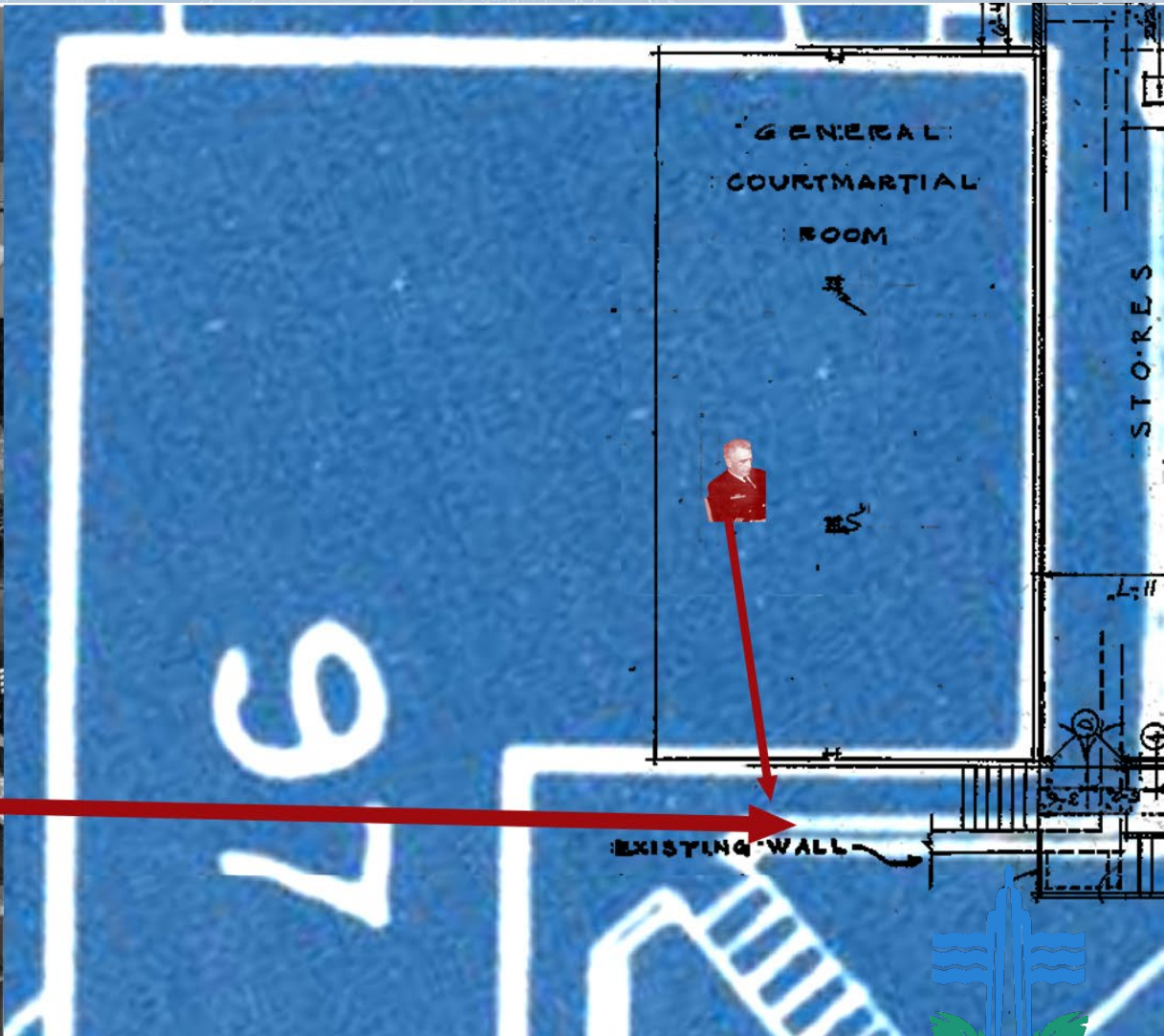
Correspondence between new posts

TWELFTH NAVAL DISTRICT
 SHOWING CONDITIONS
 JUNE 30, 1940



TREASURE ISLAND MUSEUM

1216 - 3 - 46



NO.	DESCRIPTION	DATE
1
2
3
4
5
6
7
8
9
10
11
12
13
14
15
16
17
18
19
20
21
22
23
24
25
26
27
28
29
30
31
32
33
34
35
36
37
38
39
40
41
42
43
44
45
46
47
48
49
50

Existing retaining wall

LEGEND

BOUNDARY LINE	---
BRICK WALL	---
PLANK WALL	---
CEMENT CONCRETE	---
GRAVEL FILL	---
WATER (EXISTING)	---
WATER (PROPOSED)	---
CONCRETE	---
BRICKWORK	---
GENERAL STRIP	---
OPENINGS	---

JUNE 30, 1940

SCALE IN FEET

REVISOR TO JUNE 30, 1941

CAPTAIN (CE) U.S. NAVY, DISTRICT PUBLIC WORKS OFFICER

TREASURE ISLAND MUSEUM

1216 - 3 - 46

BENCH MARKS

USCG&S	USNAVY	ELEV.	ZONE	DESCRIPTION & REMARKS
	GOAT	33.27	D-E-1	STANDARD DISK IN CONC.
	TANK	33.50	B-1	PIPE IN CONC (SHT BY 6018)
	BOSTON	62.55	B-1	" "
	RESERVOIR	144.28	C-2	SHIP SPIKE IN ROCK WALL - CEM RDLTOP
	ROCK	292.24	E-2	PIPE IN CONC.
		297.21	E-3	" "
		29.63	C-4	KON CONC 120 86-0" PISTOL MANDR.
		263.77	D-4	25" H. COP. BLDG # 61
		109.73	C-5	PIPE IN CONC.
		203.80	D-5	" "
		350.87	E-5	STANDARD DISK IN CONC.
		24.35	E-5	ON ROOF BLDG # 710
		32.20	C-6	E. END OF WALL N. OF BLDG # 34
		114.36	C-6	" " " " " " " " " " " "
		87.80	C-6	" " " " " " " " " " " "
		187.31	D-6	BRASS PLUG LOWER STEP 15' W OF FIRE STA.
		32.74	F-6	1 1/2" E AT W SPOBB STA W 80
		23.84	C-7	BRASS PLUG TOP OF WALL 105' S OF BLDG # 70
		70.00	C-7	100' S OF OFFICERS TENNIS COURT
		133.68	D-7	1 1/2" W OF NW COR BLDG # 70
		139.34	F-7	E. COR. END WALL BY FIRE STATION
		163.74	G-7	1260' S OF LN RES # 17
		32.93	B-8	IRON CURB IN COR. ARMY TANK HOUSE
		28.08	C-8	TOP OF FIRE HYDRANT REAR OF 204
		22.17	D-8	100' N OF BLDG # 70
		12.99	E-8	BRASS PLUG IN CURB W/E OF 45
		13.11	E-8	PIPE IN CONC 15' W OF 40
		102.10	G-8	STANDARD DISK IN LN RES # 8
		84.24	A-9	45' W OF USCG&S YERBA REAL
		84.30	A-9	STANDARD DISK
		138.44	A-9	BRASS PLUG IN PIPE 25' SW OF ARMY
		139.06	A-9	" "
		36.57	A-9	STANDARD DISK
		23.63	B-9	DISK IN SW COR. EASTERMOST PIER
		12.90	D-9	SPIKE 65' S BLDG # 74 PIER # 2
		11.85	D-9	" " " " " " " " " " " "
		11.72	E-9	" " " " " " " " " " " "
		13.206	B-10	USCG&S DISK IN CONC 60' N ARMY DOCK
		7.60	B-10	" " " " " " " " " " " "
		12.50	B-10	" " " " " " " " " " " "

TIDE PLANES*

ELEVATIONS OF TIDE PLANES AT YERBA BUENA ISLAND REFERRED TO MEAN LOWER LOW WATER ARE AS FOLLOWS:
(FROM DEPT. OF COMMERCE BULLETIN (USCGA) 2731 ADOP. MAY 1940)

PLANES	ELEV.
HIGHEST TIDE (ESTIMATED)	8'00"
HIGHER HIGH WATER	8'03"
MEAN HIGH WATER	5'40"
HALF TIDE LEVEL	3'25"
MEAN LOW WATER	1'05"
MEAN LOWER LOW WATER = STATION DATUM	0'00"
LOWEST TIDE (ESTIMATED)	-2'50"

* Based on one year of automatic gage records Oct. 1936-Sept. 1937, reduced to mean values.

**MAP OF
U.S. RECEIVING SHIP SAN FRANCISCO
(YERBA BUENA ISLAND)
TWELFTH NAVAL DISTRICT**

SHOWING CONDITIONS ON
JUNE 30, 1940

SCALE IN FEET
182,463

CAPTAIN (JCE) U.S. NAVY,
DISTRICT PUBLIC WORKS OFFICER.

DC 84

**PORT CHICAGO
TRIAL COURTROOM
IN BUILDING #97**

LIST

NO.	GENERAL CATEGORY	ZONE
1
2
3
4
5
6
7
8
9
10
11
12
13
14
15
16
17
18
19
20
21
22
23
24
25
26
27
28
29
30
31
32
33
34
35
36
37
38
39
40
41
42
43
44
45
46
47
48
49
50
51
52
53
54
55
56
57
58
59
60
61
62
63
64
65
66
67
68
69
70
71
72
73
74
75
76
77
78
79
80
81
82
83
84
85
86
87
88
89
90
91
92
93
94
95
96
97
98
99
100

NOTES:

The Order of Oct. 17, 1846,
and the Order of April 12, 1898 and Jan. 26, 1899,
agree to the State of California, to construct
San Francisco Harbor, in Oakland, California,
and Feb. 23, 1910. (No Stat. 1910-1913)

TREASURE ISLAND MUSEUM



HILLTOP PARK

**PORT CHICAGO
TRIAL COURTROOM
IN BUILDING #97**

PARKING LOT

LIST

NO.	DESCRIPTION	DATE
1	PLAN SET	10/20/10
2	PERMITS	11/15/10
3	CONTRACT	12/10/10
4	AS-BUILT	01/15/11
5	REVISIONS	02/01/11
6	CONSTRUCTION	02/15/11
7	CLOSURE	03/01/11
8	FINAL	03/15/11

BENCH

1	0
2	5
3	10
4	15
5	20
6	25
7	30
8	35
9	40
10	45
11	50
12	55
13	60
14	65
15	70
16	75
17	80
18	85
19	90
20	95
21	100

REMARKS

1	CONC.
2	BY G.G.I.E.
3	WALL - CEM RD LOOP
4	OP PISTOL RANGE
5	* 61
6	CONC.
7	TRAIL



MAP OF
U.S. RECEIVING SHIP SAN FRANCISCO
Treasure Island Rd

**Approximate
Location
of Courtroom**



Parking Lot

Crosswalk to Park



A
B
C
D
E
F
G

ST	DATE	DESCRIPTION	BY
1	11/15/19	ISSUED FOR PERMIT	MM
2	11/15/19	REVISION	MM
3	11/15/19	REVISION	MM
4	11/15/19	REVISION	MM
5	11/15/19	REVISION	MM
6	11/15/19	REVISION	MM
7	11/15/19	REVISION	MM
8	11/15/19	REVISION	MM
9	11/15/19	REVISION	MM
10	11/15/19	REVISION	MM
11	11/15/19	REVISION	MM
12	11/15/19	REVISION	MM
13	11/15/19	REVISION	MM
14	11/15/19	REVISION	MM
15	11/15/19	REVISION	MM
16	11/15/19	REVISION	MM
17	11/15/19	REVISION	MM
18	11/15/19	REVISION	MM
19	11/15/19	REVISION	MM
20	11/15/19	REVISION	MM
21	11/15/19	REVISION	MM
22	11/15/19	REVISION	MM
23	11/15/19	REVISION	MM
24	11/15/19	REVISION	MM
25	11/15/19	REVISION	MM
26	11/15/19	REVISION	MM
27	11/15/19	REVISION	MM
28	11/15/19	REVISION	MM
29	11/15/19	REVISION	MM
30	11/15/19	REVISION	MM
31	11/15/19	REVISION	MM
32	11/15/19	REVISION	MM
33	11/15/19	REVISION	MM
34	11/15/19	REVISION	MM
35	11/15/19	REVISION	MM
36	11/15/19	REVISION	MM
37	11/15/19	REVISION	MM
38	11/15/19	REVISION	MM
39	11/15/19	REVISION	MM
40	11/15/19	REVISION	MM
41	11/15/19	REVISION	MM
42	11/15/19	REVISION	MM
43	11/15/19	REVISION	MM
44	11/15/19	REVISION	MM
45	11/15/19	REVISION	MM
46	11/15/19	REVISION	MM
47	11/15/19	REVISION	MM
48	11/15/19	REVISION	MM
49	11/15/19	REVISION	MM
50	11/15/19	REVISION	MM
51	11/15/19	REVISION	MM
52	11/15/19	REVISION	MM
53	11/15/19	REVISION	MM
54	11/15/19	REVISION	MM
55	11/15/19	REVISION	MM
56	11/15/19	REVISION	MM
57	11/15/19	REVISION	MM
58	11/15/19	REVISION	MM
59	11/15/19	REVISION	MM
60	11/15/19	REVISION	MM
61	11/15/19	REVISION	MM
62	11/15/19	REVISION	MM
63	11/15/19	REVISION	MM
64	11/15/19	REVISION	MM
65	11/15/19	REVISION	MM
66	11/15/19	REVISION	MM
67	11/15/19	REVISION	MM
68	11/15/19	REVISION	MM
69	11/15/19	REVISION	MM
70	11/15/19	REVISION	MM
71	11/15/19	REVISION	MM
72	11/15/19	REVISION	MM
73	11/15/19	REVISION	MM
74	11/15/19	REVISION	MM
75	11/15/19	REVISION	MM
76	11/15/19	REVISION	MM
77	11/15/19	REVISION	MM
78	11/15/19	REVISION	MM
79	11/15/19	REVISION	MM
80	11/15/19	REVISION	MM
81	11/15/19	REVISION	MM
82	11/15/19	REVISION	MM
83	11/15/19	REVISION	MM
84	11/15/19	REVISION	MM
85	11/15/19	REVISION	MM
86	11/15/19	REVISION	MM
87	11/15/19	REVISION	MM
88	11/15/19	REVISION	MM
89	11/15/19	REVISION	MM
90	11/15/19	REVISION	MM
91	11/15/19	REVISION	MM
92	11/15/19	REVISION	MM
93	11/15/19	REVISION	MM
94	11/15/19	REVISION	MM
95	11/15/19	REVISION	MM
96	11/15/19	REVISION	MM
97	11/15/19	REVISION	MM
98	11/15/19	REVISION	MM
99	11/15/19	REVISION	MM
100	11/15/19	REVISION	MM

BENCH	LOCATION	ELEVATION
1		
2		
3		
4		
5		
6		
7		
8		
9		
10		
11		
12		
13		
14		
15		
16		
17		
18		
19		
20		
21		
22		
23		
24		
25		
26		
27		
28		
29		
30		
31		
32		
33		
34		
35		
36		
37		
38		
39		
40		
41		
42		
43		
44		
45		
46		
47		
48		
49		
50		
51		
52		
53		
54		
55		
56		
57		
58		
59		
60		
61		
62		
63		
64		
65		
66		
67		
68		
69		
70		
71		
72		
73		
74		
75		
76		
77		
78		
79		
80		
81		
82		
83		
84		
85		
86		
87		
88		
89		
90		
91		
92		
93		
94		
95		
96		
97		
98		
99		
100		



Parking Lot

Crosswalk to Park

Roosevelt Natural Resources Restoration Program



ST

DATE	TIME	LOCATION	STATUS
10/15/2023	08:00	STATION 1	OK
10/15/2023	09:00	STATION 2	OK
10/15/2023	10:00	STATION 3	OK
10/15/2023	11:00	STATION 4	OK
10/15/2023	12:00	STATION 5	OK
10/15/2023	13:00	STATION 6	OK
10/15/2023	14:00	STATION 7	OK
10/15/2023	15:00	STATION 8	OK
10/15/2023	16:00	STATION 9	OK
10/15/2023	17:00	STATION 10	OK

SERVICE BLDGS

ZONE	BLDG	STATUS
1	101	OK
1	102	OK
1	103	OK
1	104	OK
1	105	OK
1	106	OK
1	107	OK
1	108	OK
1	109	OK
1	110	OK
1	111	OK
1	112	OK
1	113	OK
1	114	OK
1	115	OK
1	116	OK
1	117	OK
1	118	OK
1	119	OK
1	120	OK
1	121	OK
1	122	OK
1	123	OK
1	124	OK
1	125	OK
1	126	OK
1	127	OK
1	128	OK
1	129	OK
1	130	OK
1	131	OK
1	132	OK
1	133	OK
1	134	OK
1	135	OK
1	136	OK
1	137	OK
1	138	OK
1	139	OK
1	140	OK
1	141	OK
1	142	OK
1	143	OK
1	144	OK
1	145	OK
1	146	OK
1	147	OK
1	148	OK
1	149	OK
1	150	OK
1	151	OK
1	152	OK
1	153	OK
1	154	OK
1	155	OK
1	156	OK
1	157	OK
1	158	OK
1	159	OK
1	160	OK
1	161	OK
1	162	OK
1	163	OK
1	164	OK
1	165	OK
1	166	OK
1	167	OK
1	168	OK
1	169	OK
1	170	OK
1	171	OK
1	172	OK
1	173	OK
1	174	OK
1	175	OK
1	176	OK
1	177	OK
1	178	OK
1	179	OK
1	180	OK
1	181	OK
1	182	OK
1	183	OK
1	184	OK
1	185	OK
1	186	OK
1	187	OK
1	188	OK
1	189	OK
1	190	OK
1	191	OK
1	192	OK
1	193	OK
1	194	OK
1	195	OK
1	196	OK
1	197	OK
1	198	OK
1	199	OK
1	200	OK

A
B
C
D
E
F
G

BENCH

LOCATION	ELEVATION
1	100.00
2	100.00
3	100.00
4	100.00
5	100.00
6	100.00
7	100.00
8	100.00
9	100.00
10	100.00
11	100.00
12	100.00
13	100.00
14	100.00
15	100.00
16	100.00
17	100.00
18	100.00
19	100.00
20	100.00
21	100.00
22	100.00
23	100.00
24	100.00
25	100.00
26	100.00
27	100.00
28	100.00
29	100.00
30	100.00
31	100.00
32	100.00
33	100.00
34	100.00
35	100.00
36	100.00
37	100.00
38	100.00
39	100.00
40	100.00
41	100.00
42	100.00
43	100.00
44	100.00
45	100.00
46	100.00
47	100.00
48	100.00
49	100.00
50	100.00
51	100.00
52	100.00
53	100.00
54	100.00
55	100.00
56	100.00
57	100.00
58	100.00
59	100.00
60	100.00
61	100.00
62	100.00
63	100.00
64	100.00
65	100.00
66	100.00
67	100.00
68	100.00
69	100.00
70	100.00
71	100.00
72	100.00
73	100.00
74	100.00
75	100.00
76	100.00
77	100.00
78	100.00
79	100.00
80	100.00
81	100.00
82	100.00
83	100.00
84	100.00
85	100.00
86	100.00
87	100.00
88	100.00
89	100.00
90	100.00
91	100.00
92	100.00
93	100.00
94	100.00
95	100.00
96	100.00
97	100.00
98	100.00
99	100.00
100	100.00

Printed: Jan 26, 2024
California, No Construction
in the City Limits, California
1993-1999



Parking Lot

Crosswalk to Park

Roosevelt Natural Resources Restoration Program



A
B
C
D
E
F
G

ST	DATE	TIME	BY
1			
2			
3			
4			
5			
6			
7			
8			
9			
10			
11			
12			
13			
14			
15			
16			
17			
18			
19			
20			
21			
22			
23			
24			
25			
26			
27			
28			
29			
30			
31			
32			
33			
34			
35			
36			
37			
38			
39			
40			
41			
42			
43			
44			
45			
46			
47			
48			
49			
50			
51			
52			
53			
54			
55			
56			
57			
58			
59			
60			
61			
62			
63			
64			
65			
66			
67			
68			
69			
70			
71			
72			
73			
74			
75			
76			
77			
78			
79			
80			
81			
82			
83			
84			
85			
86			
87			
88			
89			
90			
91			
92			
93			
94			
95			
96			
97			
98			
99			
100			

BENCH

LOCATION	LEVEL
1	
2	
3	
4	
5	
6	
7	
8	
9	
10	
11	
12	
13	
14	
15	
16	
17	
18	
19	
20	
21	
22	
23	
24	
25	
26	
27	
28	
29	
30	
31	
32	
33	
34	
35	
36	
37	
38	
39	
40	
41	
42	
43	
44	
45	
46	
47	
48	
49	
50	
51	
52	
53	
54	
55	
56	
57	
58	
59	
60	
61	
62	
63	
64	
65	
66	
67	
68	
69	
70	
71	
72	
73	
74	
75	
76	
77	
78	
79	
80	
81	
82	
83	
84	
85	
86	
87	
88	
89	
90	
91	
92	
93	
94	
95	
96	
97	
98	
99	
100	

and Jan. 26, 1999.
California, to construct
by the California, California
1993-1999.



Parking Lot

Crosswalk to Park

Roosevelt Natural Resources Restoration Program

