



JAPANTOWN PEACE PLAZA

**CIVIC DESIGN REVIEW PHASE 2+3
MARCH 20, 2023**



EXISTING PLAZA PHOTO



CONCEPT PLAN



CONCEPT PLAN



PROJECT DESIGN GOALS

from Vision Plan, May 2019

Make Post Street visually open and inviting
while mitigating wind and providing seating and shade.

Provide a large permanent stage
and seating to accommodate 200-300 people.

Make Peace Plaza an inviting and playful space
for people of all ages to discover and explore.

Create an inviting visual expression along the Geary Boulevard edge
that draws people into the plaza and mitigates noise levels from Geary Boulevard.

Incorporate significant cultural elements
included in the original design for Japantown Peace Plaza.

INFRASTRUCTURE

Rooftop: plaza above garage

- waterproofing
- structure

Budget

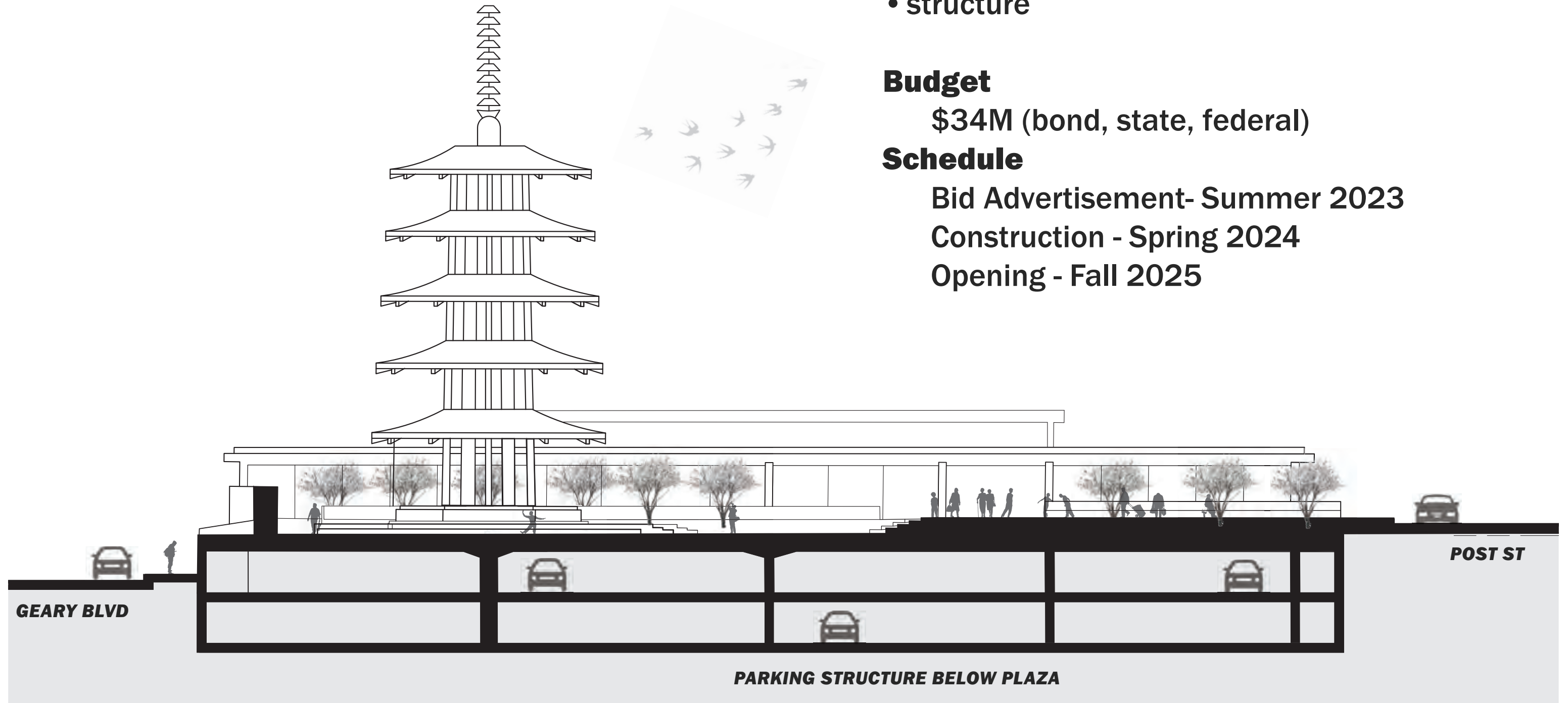
\$34M (bond, state, federal)

Schedule

Bid Advertisement- Summer 2023

Construction - Spring 2024

Opening - Fall 2025



UPDATED CONCEPT PLAN



PREVIOUS PLAN



PROPOSED PLAN

POST ST ENTRANCE



“Make Post Street visually open and inviting”

SEATING NOOKS *East*



SEATING NOOKS West



“Make Peace Plaza an inviting and playful space”



CHERRY TREES & PAGODA



UPPER TO LOWER PLAZA



TERRACED SEATING



“Make Peace Plaza an inviting and playful space”

TERRACED SEATING



“Make Peace Plaza an inviting and playful space”

GEARY BLVD ENTRANCE



“Create an inviting and visual expression along the Geary Boulevard Edge”

LARGE FESTIVAL EVENT



“Provide a large permanent stage and seating to accommodate 200-300 people”

CULTURAL ELEMENTS

from Vision Plan, May 2019



BBOULDERS
(relocated in plaza)



CHERRY TREES
(new trees embrace pagoda)



PEACE PAGODA
(seismic upgrade)



ETERNAL FLAME
(reinterpreted w/lights)



CULTURAL HERITAGE MONUMENT
(in current location)



WATER FEATURE
(expressed w/lights)



HEIWA CALLIGRAPHY
(Recreated in Geary St entrance)



FLAGPOLES
(in current location)



INTERPRETIVE ELEMENTS

INTERPRETATION



Existing Panel 1
"WHAT HAPPENED HERE"
Japantown History Walk

Existing Panel 1
"INJUSTICE AND HONOR"
Japantown History Walk

Existing Panels
"INNOVATION"
"TRANSITION"
"INTRODUCTION"



WATER FEATURE
(expressed w/lights)

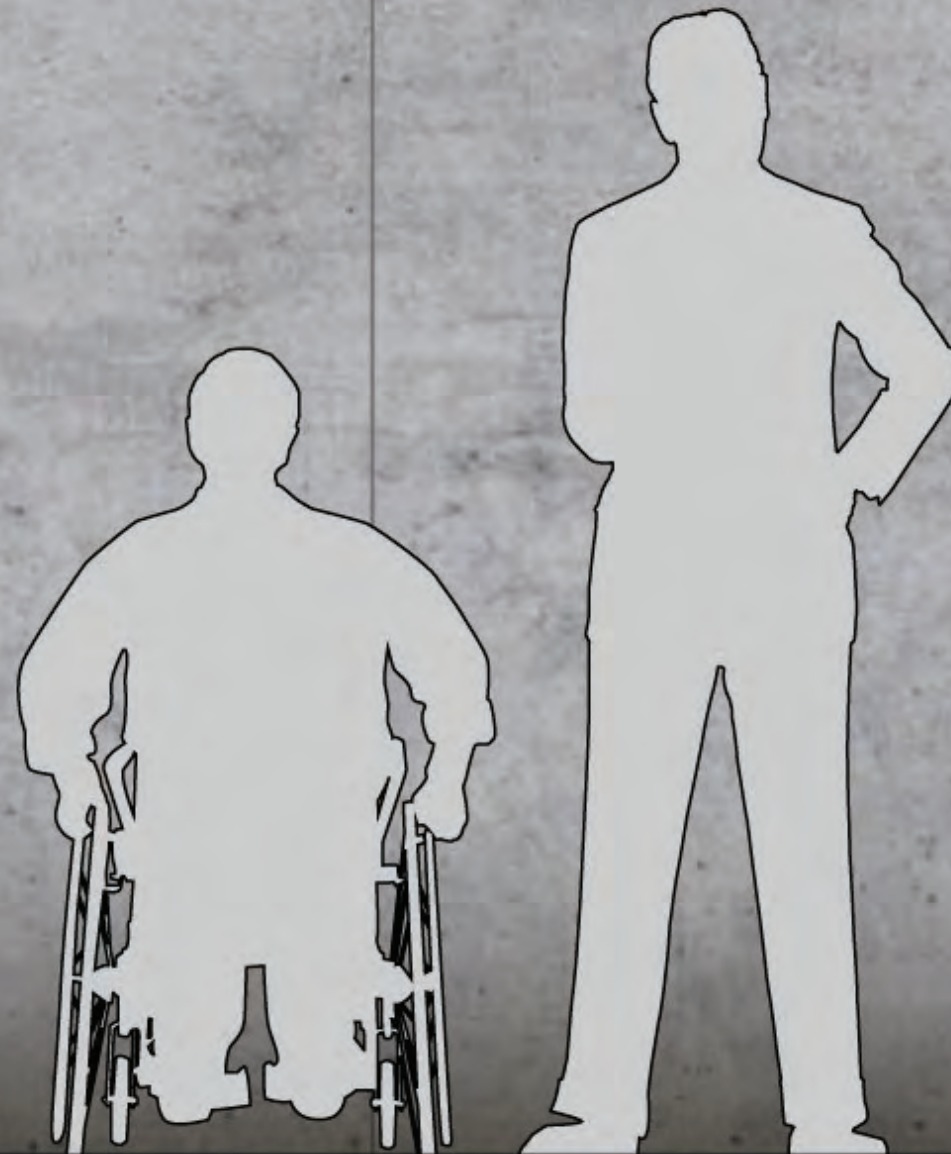
PEACE PAGODA
(seismic upgrade)



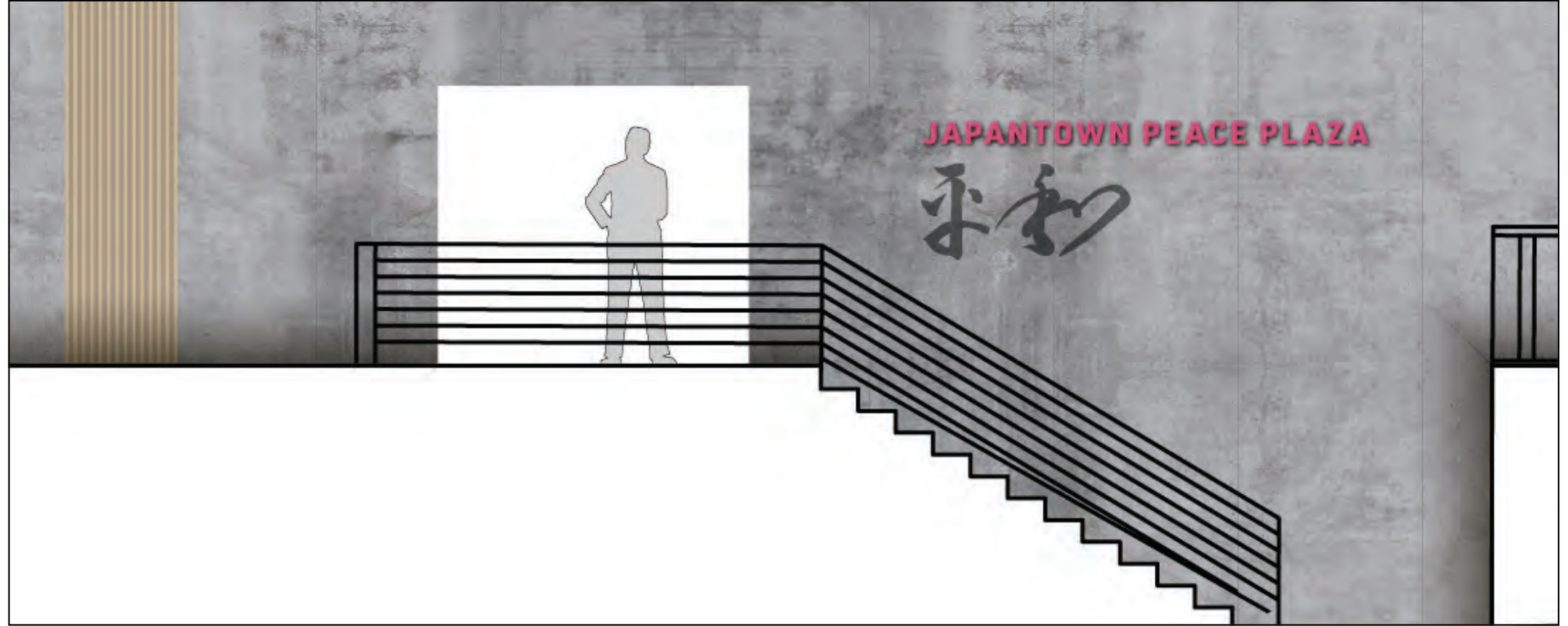
ETERNAL FLAME
*(reinterpreted
w/lights)*



INTERPRETIVE PANEL



SITE IDENTIFICATION



ETERNAL FLAME

ETERNAL FLAME



CIVIC DESIGN REVIEW PHASE 2+3
JAPANTOWN PEACE PLAZA RENOVATION



MARCH 20, 2023
SAN FRANCISCO RECREATION & PARKS/PUBLIC WORKS

ETERNAL FLAME



CIVIC DESIGN REVIEW PHASE 2+3
JAPANTOWN PEACE PLAZA RENOVATION



MARCH 20, 2023
SAN FRANCISCO RECREATION & PARKS/PUBLIC WORKS

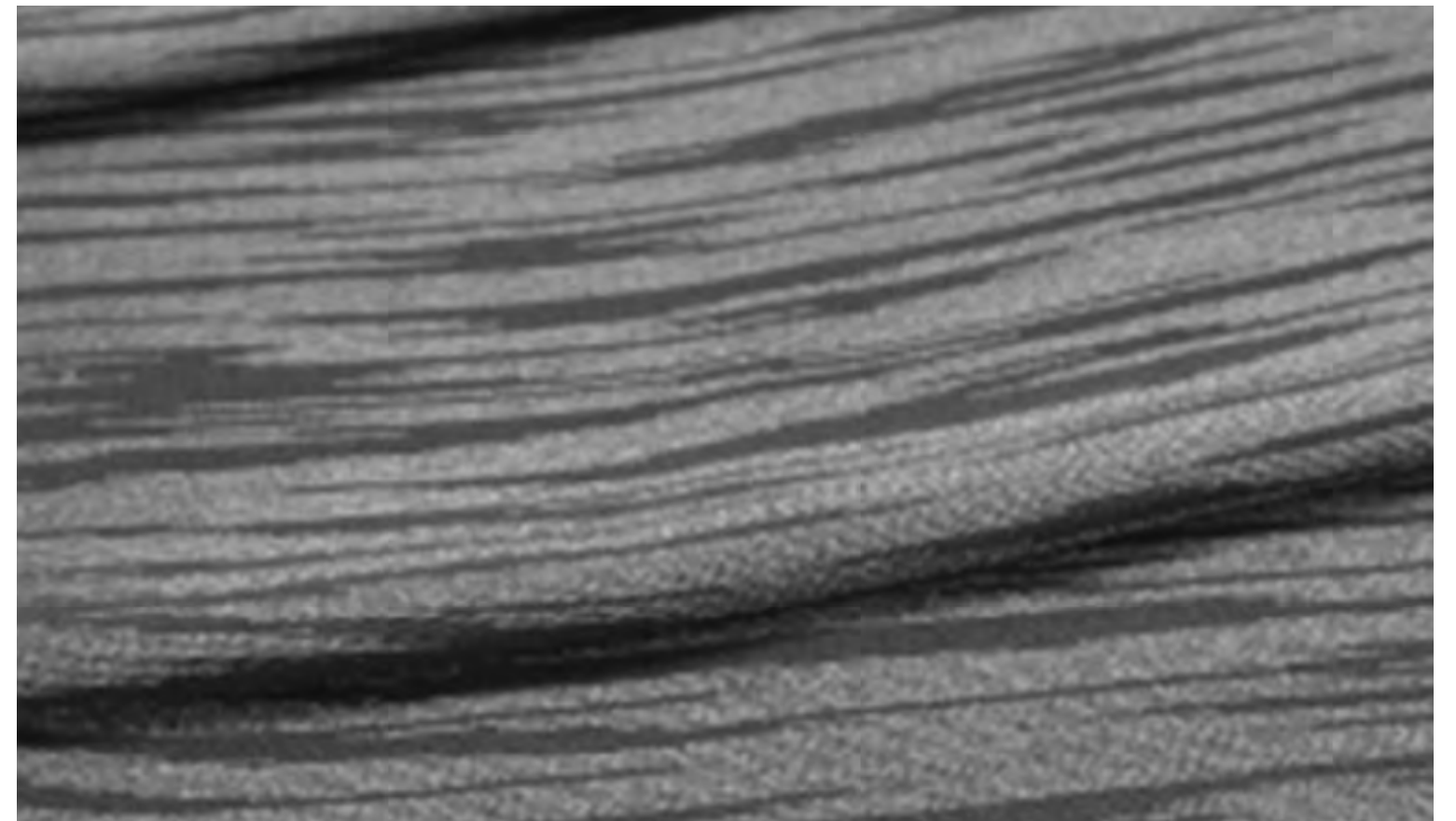
WATER EXPRESSION
Paving & Light

WATER & FOG

KASUMI (FOG)

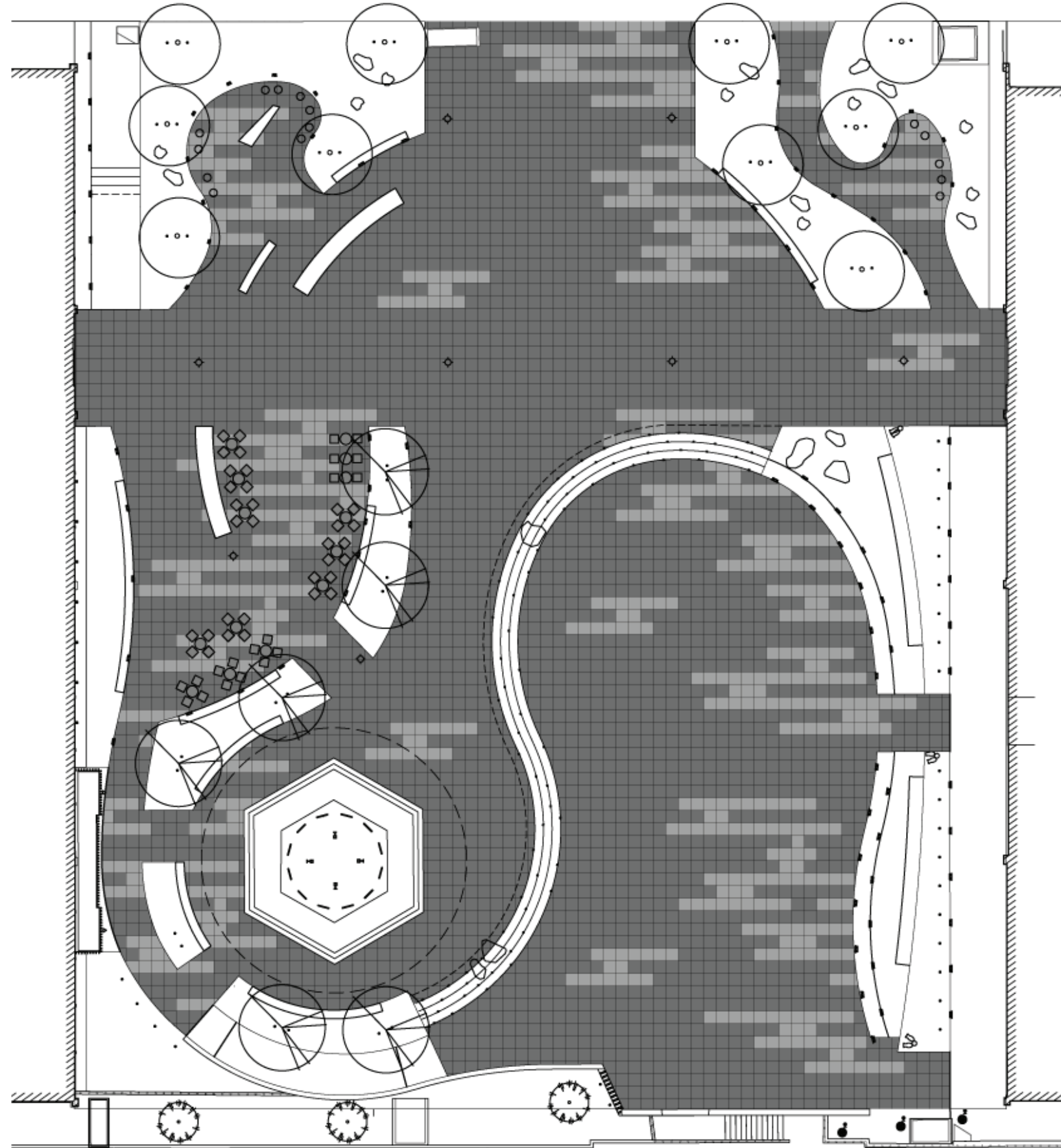


CIVIC DESIGN REVIEW PHASE 2+3
JAPANTOWN PEACE PLAZA RENOVATION



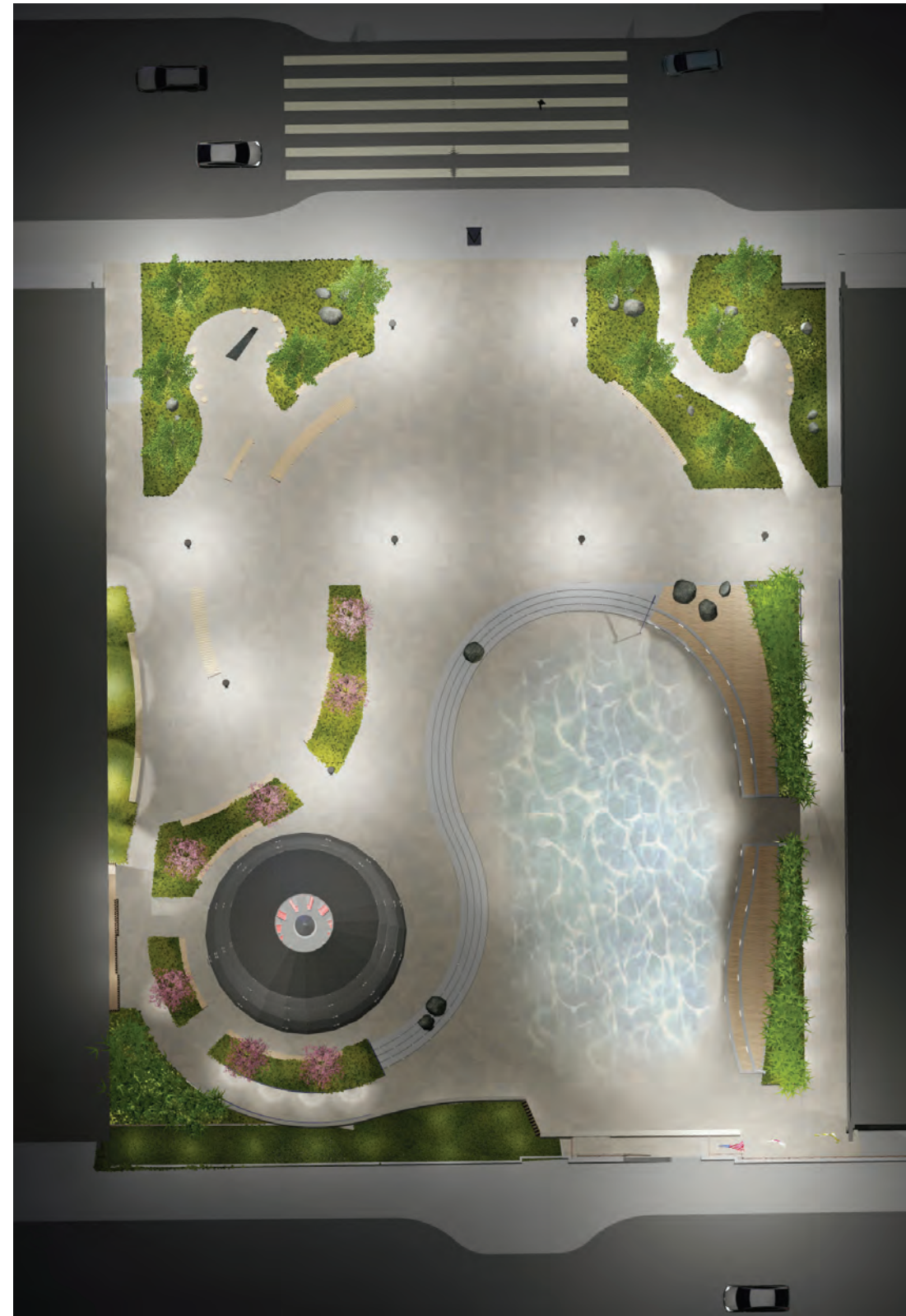
MARCH 20, 2023
SAN FRANCISCO RECREATION & PARKS/PUBLIC WORKS

PAVING PATTERN



LIGHTING

LIGHTING PLAN



Concept from Vision Plan, May 2019



Proposed: Water expressed through light, 2023



LIGHTING



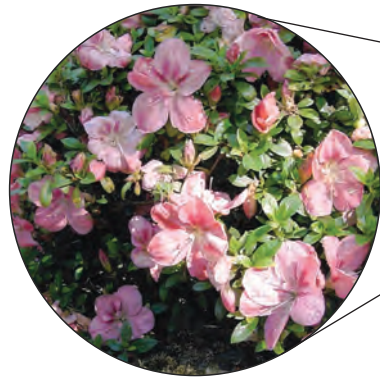
PLANTING/TREES

PLANTING PLAN



FALL/WINTER

LIRIOPE MUSCARI
Big Blue Lilyturf



SPRING/SUMMER

RHODODENDRON 'CHUKYO-NO HARU'
Azalea



FALL/WINTER

PRUNUS X YEDOENSIS 'YOSHINO'
Japanese Flowering Cherry



SPRING/SUMMER



FALL/WINTER

ACER PALMATUM
Japanese Maple



SPRING/SUMMER



PHYLLOSTACHYS AUREOSULCATA
Yellow Groove Bamboo



PLANTING PALETTE

SPRING - SUMMER SHRUBS



BLECHNUM SPICANT
Deer Fern
Water Use: Moderate



RHODODENDRON 'CHUKYO-NO-HARU'
Azalea
Water Use: Moderate



RHODODENDRON 'RO GETSU'
Azalea
Water Use: Moderate



RHODODENDRON 'SHINNYO-NO-HIKARI'
Azalea
Water Use: Moderate

GRASSES



IRIS DOUGLASIANA
Douglas Iris
Water Use: Low



PLEIOBLASTUS SP.
Dwarf Bamboo
Water use: Moderate



LIRIOPE MUSCARI
Big Blue Lilyturf
Water Use: Moderate



PHYLLOSTACHYS AUREOSULCATA
Yellow Groove Bamboo
Water use: Low

GROUNDCOVER



OPHIOPOGON
Japnicus 'Nana'
Water Use: Moderate



SEDUM SPP.
Stonecrop
Water Use: Low

BLOOM SCHEDULE



THANK YOU



APPENDIX

INTERPRETIVE PANEL

Geary St Wall North Elevation



Interpretive Panel

Eternal Flame

Existing Interpretive Panels to Remain on Site

