



SAN FRANCISCO
RECREATION
& PARKS

The San Francisco Recreation & Parks Department is the city agency responsible for governing and maintaining all city-owned parks and recreational facilities in San Francisco, California.

Project Manager: Omar Davis
Deputy Director, Partnerships: Abigail Maher



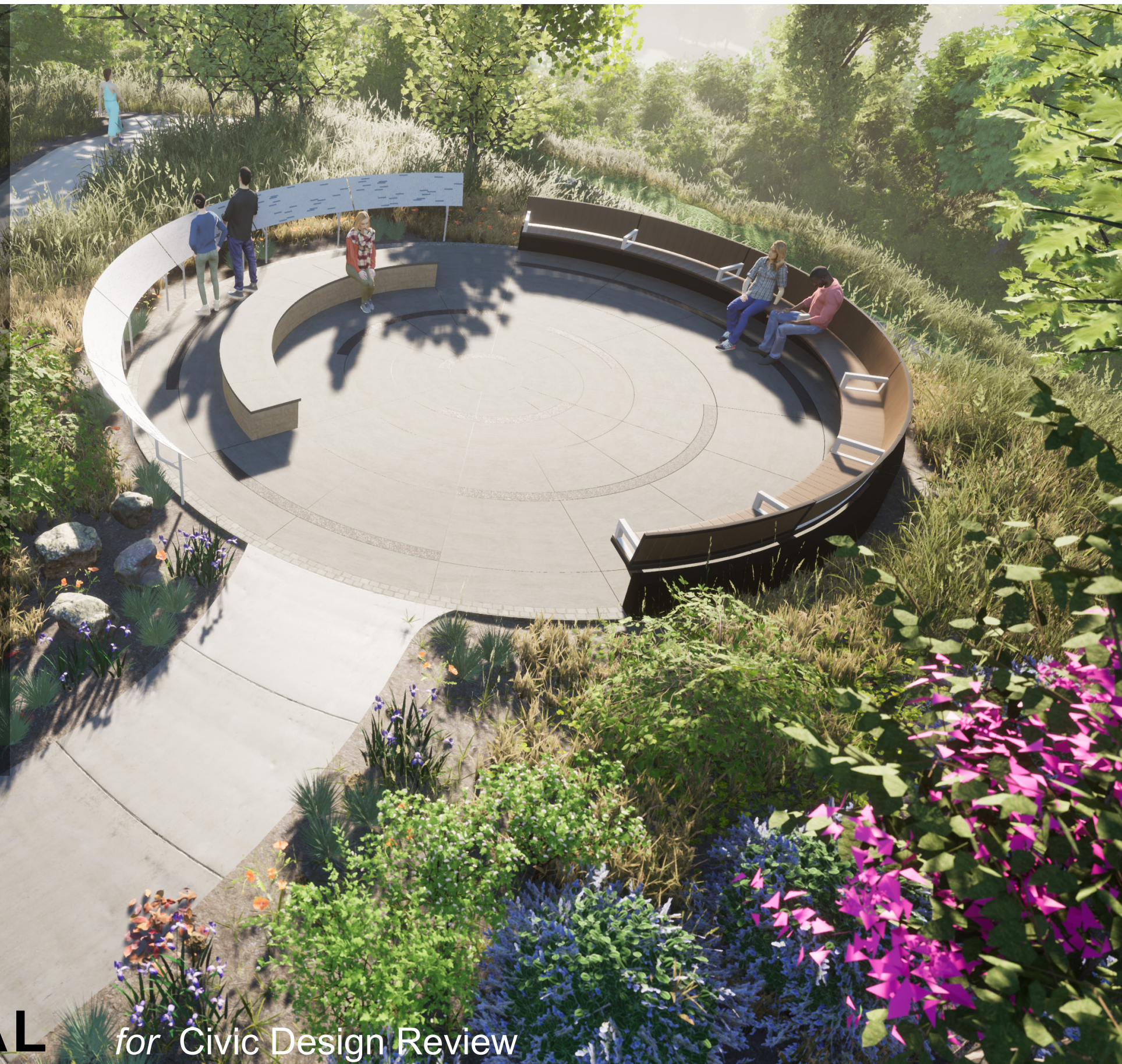
Bay Area Young Survivors (BAYS) is a San Francisco-based non-profit that has served as an inclusive support community for young people with breast cancer in the San Francisco Bay Area since its founding in 2003.

Contacts: Nola Agha, Ali Kent

INSIDEOUT

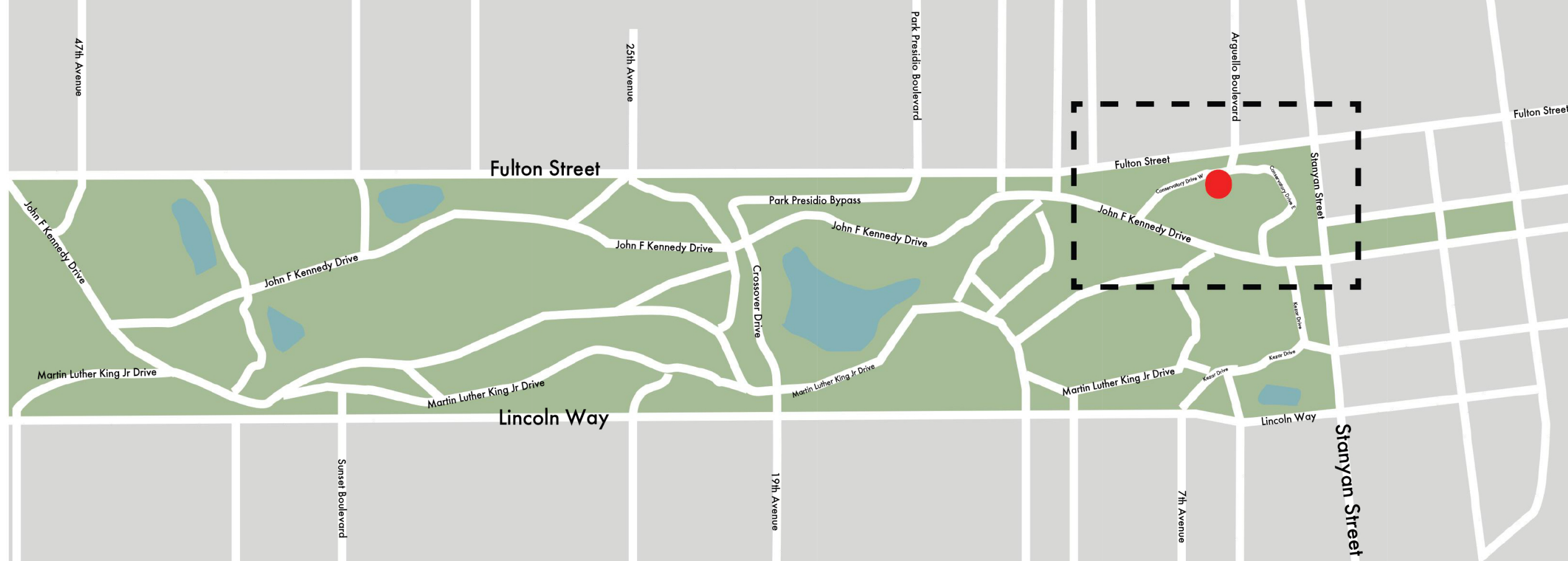
InsideOut Design - Landscape and Architecture firm that has been working with BAYS since 2015. InsideOut is responsible for the design, construction details and agency submittals for the BAYS Memorial Garden through to project construction.

Designers: Julianna Fecskes Phillips and Penn Phillips



BAYS MEMORIAL

for Civic Design Review



Golden Gate Park Map
NTS



Existing Conditions



New site features:

Entry path

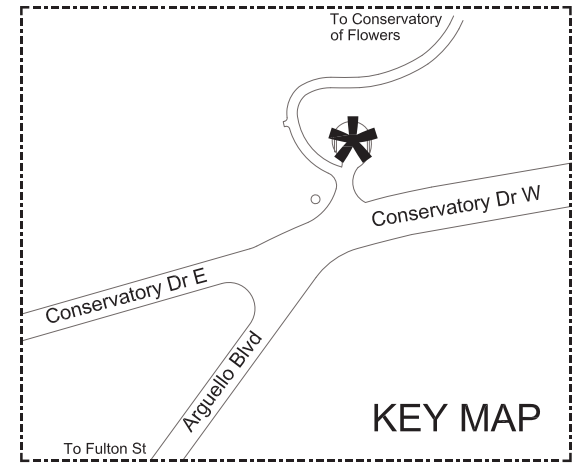
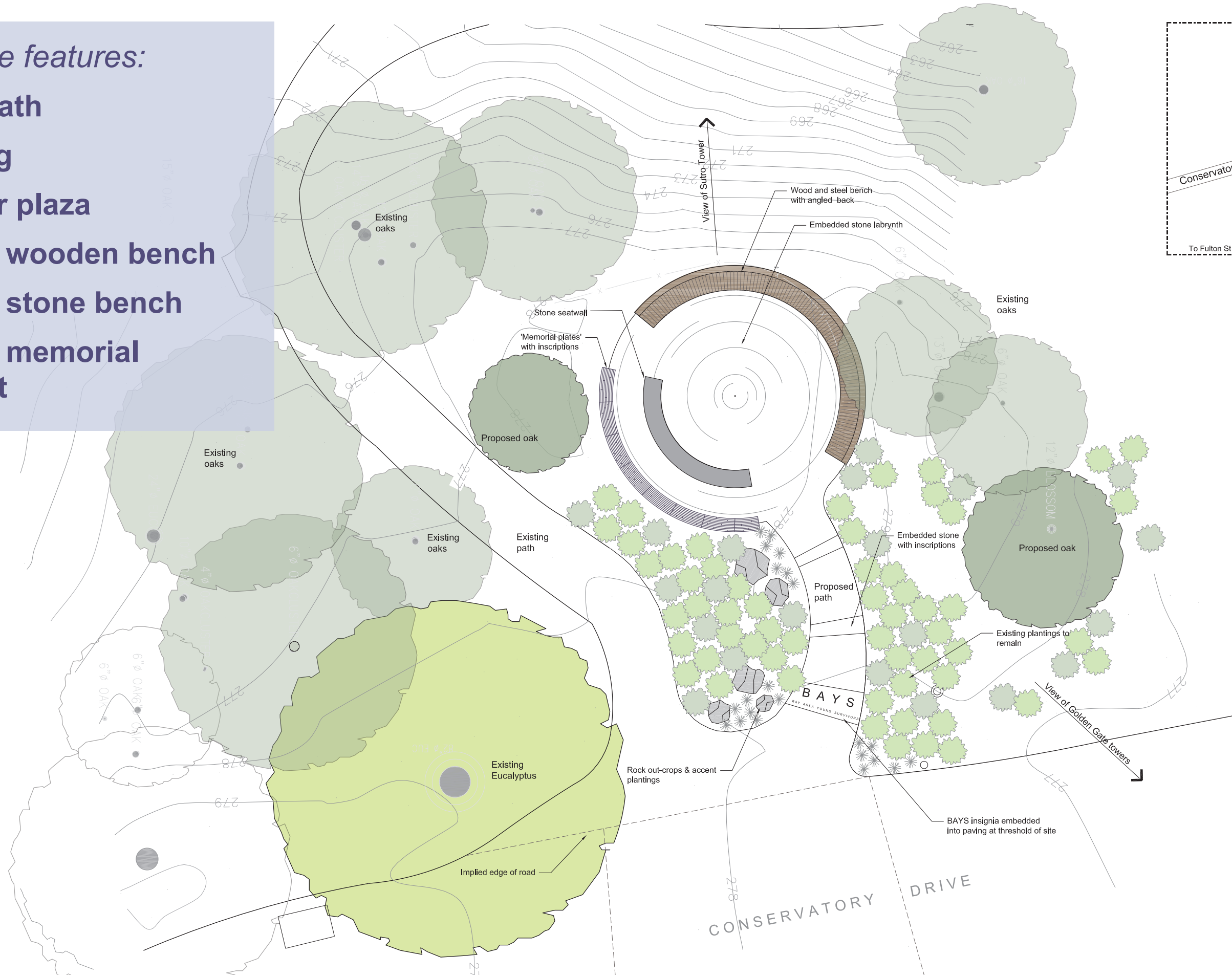
Planting

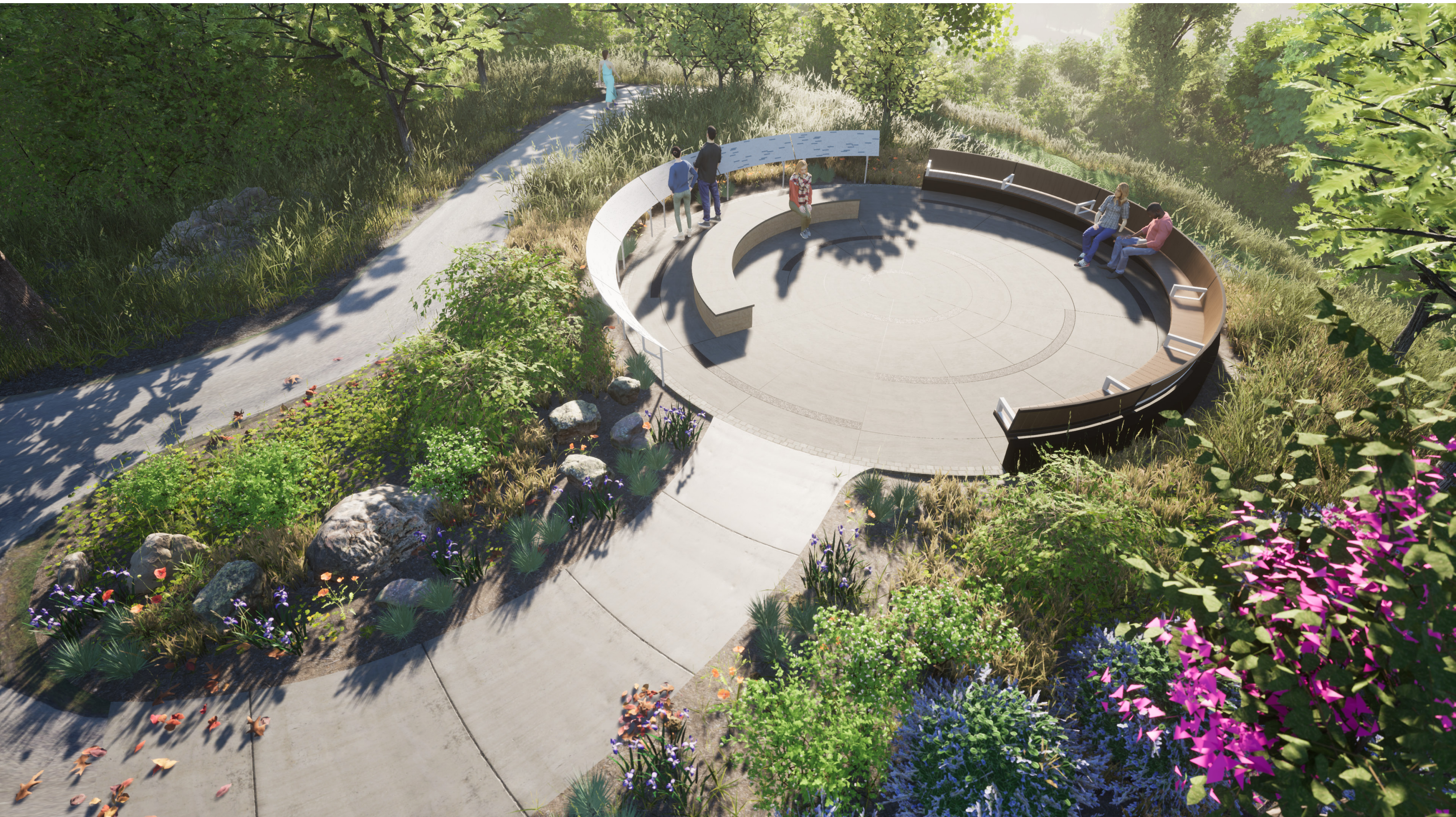
Circular plaza

Curved wooden bench

Curved stone bench

Curved memorial element









MEMORIAL
+ ENTRY SIGN



Perforated, powder-coated steel memorial element and entry sign (color TBD)

HARDSCAPE



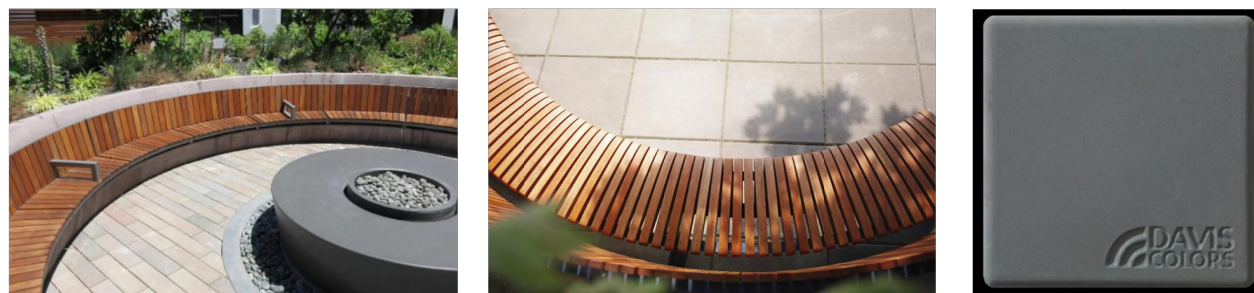
Radial granite paving and entry path with metal or concrete inlays/floor plaques and black basalt cobblestone edge bands (color and material TBD)

PLANTING
AREA



Planting area accented by Napa basalt boulders (AIDS Memorial as precedent)

WOOD
SEATING

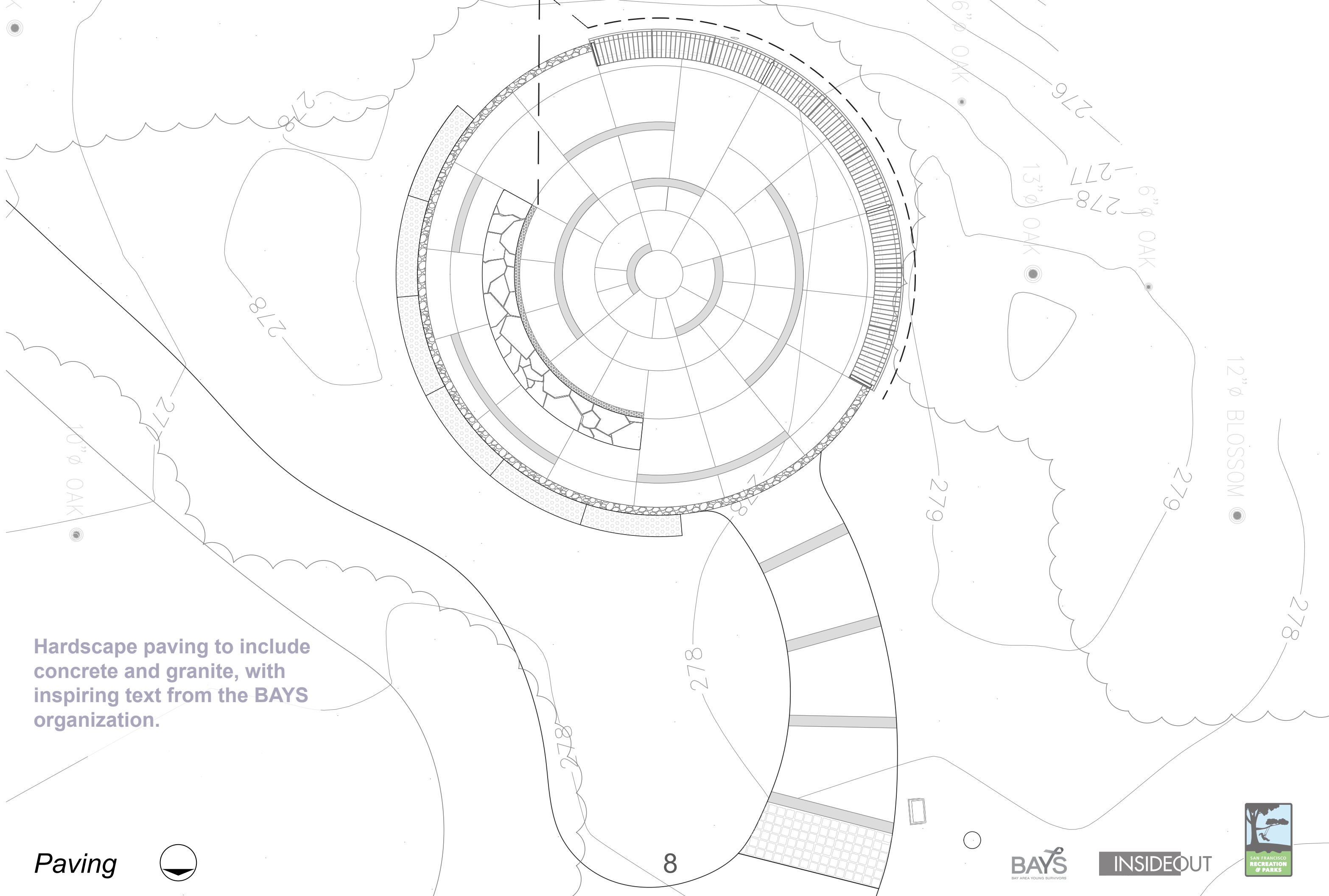


Wood bench on colored concrete retaining wall (Maglin Ogden Bench; Davis Silversmoke Iron Oxide 860 integral color concrete)

STONE
SEATING



Connecticut bluestone stone bench (natural edge drystack)



Hardscape paving to include concrete and granite, with inspiring text from the BAYS organization.

Paving



8



INSIDEOUT





MR Deer Grass



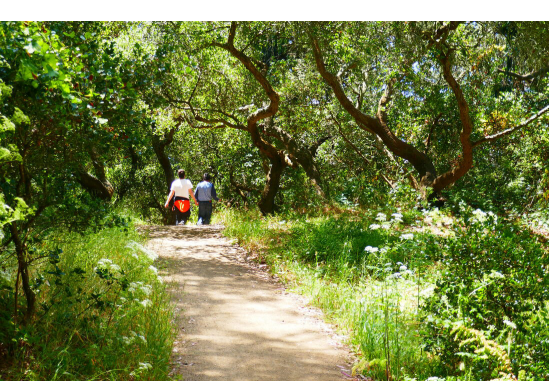
HM Heuchera



FX Siskiyou Fescue



EC California Poppy



FX 37

Healthy coast live oaks preserved to frame the site are complemented by a palette of California native and oak woodland community plants.



CC Ceanothus



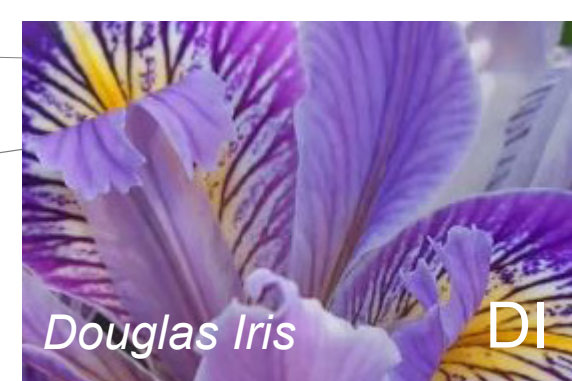
CO Western Redbud



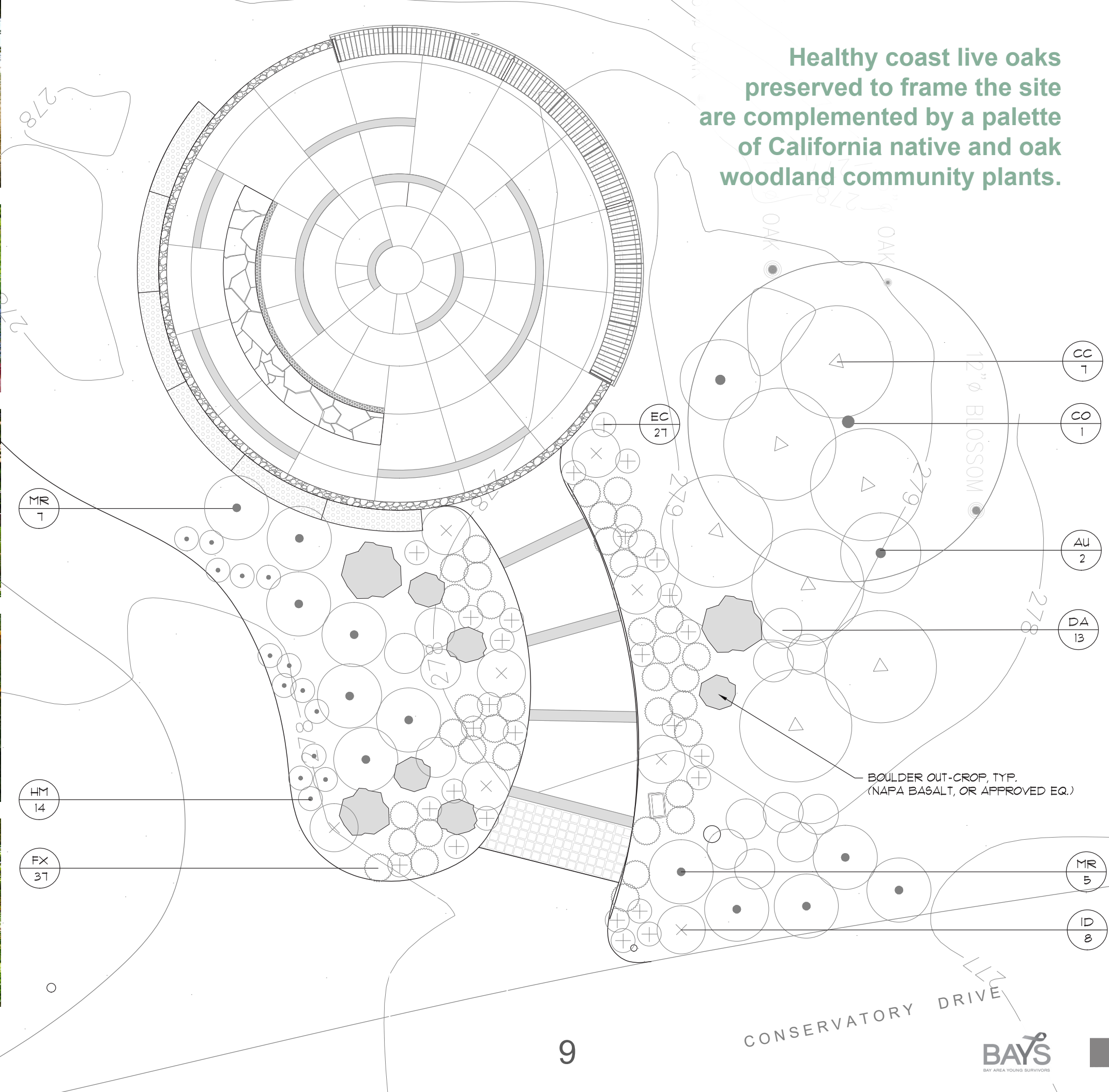
AU Manzanita



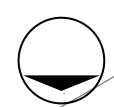
DA Monkeyflower



DI Douglas Iris



Planting



FUNDING for BAYS Breast Cancer Memorial Garden, Golden Gate Park, San Francisco

FUNDING SOURCE:

Bay Area Young Survivors (BAYS) organization \$400,000

TOTAL SOURCES **\$400,000**

USES:

Hard Costs (including contingencies) \$250,000

Soft Costs \$ 80,000

TOTAL BUDGET **\$330,000**

PROJECT SCHEDULE:

2021-22 *(complete)*

- Site recon and preliminary designs - complete
- Preliminary RecPark review

MARCH – JUNE 2022 *(complete)*

- 2 Community Meetings
- Design Development and 3-D Rendering
- Develop 35% set

OCTOBER – DECEMBER 2022

- Mayor’s Office of Disability (MOD) Review
- CEQA Review (exempt from CEQA pending RecPark Commission approval)
- 30% review by RecPark Structural Maintenance Yard (SMY)
- Civic Design Review (CDR)
- Capital Committee of RecPark Commission

JANUARY – MARCH 2022

- 60% and 90% review by RecPark Structural Maintenance
- ALL APPROVALS FOR PROJECT COMPLETE

APRIL – JULY 2022

- Bidding of project
- Demolition and Construction

Public outreach through Rec and Park included two virtual community meetings on **March 9** and **March 24, 2022**.

The general public and the following groups were invited:

Friends of the Oak Woodlands

Bay Area Ridge Trail Council

Gardens of Golden Gate Park

Friends of Kathleen's Corner (*corner of Stanyan + Fulton*)

Barney Barron Way (plaque near McLaren Lodge)

The Dahlia Society of California

Planning Association of Richmond (PAR)

Park, Recreation, Open Space Advisory Committee (PROSAC)

SF Parks Alliance

St. Mary's Medical Center

National AIDS Memorial Grove

The memorial design has incorporated public feedback and been widely praised.

Thus far the project has received letters of support from 14 individuals and 6 organizations:

Letters of Support:

Richmond District (5)

Haight-Ashbury District (2)

Mission District (3)

unidentified district (1)

Bay Area community members (3)

+

Bay Area Ridge Trail Council

Friends of the Oak Woodlands

National AIDS Memorial

Gardens of Golden Gate Park

The Dahlia Society of California

Bay Area Young Survivors

Letters of Opposition:

None (0)

The BAYS Memorial will be cherished and maintained through ongoing community engagement and support:

BAYS, ongoing stewardship beyond Rec and Park duties
Friends of the BAYS Memorial Garden, gardening
BAYS, addition of names

