

REDISTRICTING TASK FORCE



City Hall
1 Dr. Carlton B. Goodlett Place, Room 244
San Francisco, CA 94102-4689
Tel. No. (415) 554-7710
Email: rdtf@sfgov.org
TDD/TTY No. (415) 554-5227

April 18, 2012

John Arntz, Director, Department of Elections
Room 48
1 Carlton Goodlett Place
San Francisco CA 94102

Dear Mr. Arntz,

On behalf of the San Francisco Redistricting Task Force, I am pleased to submit our final report to you and the Elections Commission. The report represents the conclusion of our work which began in July 2011 with your introduction and initial set of instructions.

Following 30 meetings (two to seven and a half hours each) totaling approximately 100 hours, more than 1,300 written and oral public comments, and countless hours of data analysis, we are proud to present this final work product. One of the goals established by the Task Force was to engage as many constituents, from as many varied perspectives, as possible. Even with limited resources, we believe we accomplished our goal. The Task Force considered all the invaluable input and made its final decisions balancing the interests of individuals and communities with the best interests of the City as whole. The outline of the report is as follows:

- I. Introduction
- II. Criteria
- III. Description of the Task Force Process
- IV. District Considerations
- V. Deviations in Excess of 1%
- VI. Lessons Learned and Recommendations
- VII. Appendices
 - a. Final Map
 - b. District Descriptions
 - c. Individual District Maps
 - d. Statistics (for each district)
 - e. Community Newspaper Advertisement

I would like thank: the Department of Elections; Kay Gulbengay and Gail Johnson from the Office of the Clerk of the Board of Supervisors; Jon Givner, Mollie Lee, and Andrew Shen from the Office of the City Attorney; and Tamina Alon, Jaime Clark, and Karin Mac Donald from Q2 Data and Research LLC. We are grateful for the enormous and exemplary support that we received from each of them. I would also like to thank the members of the community who also spent countless hours engaging in this important process.

I submit this report on behalf of the Redistricting Task Force (Jenny Lam, Mike Alonso, Myong Leigh, Sonia Melara, Marily Mondejar, David Pilpel, Mark Schreiber, Melissa Tidwell) and thank the City and County of San Francisco for the opportunity we have had to serve.

Sincerely,

A handwritten signature in black ink that reads "Eric McDonnell".

Eric McDonnell
Chair, SF Redistricting Task Force

SF Redistricting Task Force Report

I. Introduction

On March 8, 2011, the US Census Bureau released its 2010 decennial census data for California. According to this data, San Francisco's population was 805,235 as of the census date (April 1, 2010), an increase of 28,502 people (3.7%) from the 2000 census count of 776,733 people. After reviewing this data, the Director of Elections found the population changes were not uniform across all the supervisorial districts and notified the Board of Supervisors, on May 9, 2011, that the existing supervisorial districts would need to be redrawn. The Board of Supervisors thereupon convened the Redistricting Task Force (hereinafter the "Task Force") by legislation approved June 13, 2011 to carry out the required redistricting. This report sets forth the revised district lines adopted by the Task Force and information about the process which led to the adoption of the new map.

a. San Francisco Charter Provisions

Pursuant to Section 13.110(d) of the Charter, population variations between the eleven supervisorial districts should be limited to one percent from the statistical mean unless additional variations, limited to five percent of the statistical mean, are necessary to prevent dividing or diluting the voting power of minorities and/or to keep recognized neighborhoods intact. The Charter also requires that the new supervisorial district boundaries conform to the rule of one person, one vote, and reflect communities of interest within the City and County.

The Charter provides that census data at the census block level as released by the United States Census Bureau shall be used in any analysis of population requirements and the application of the rule of one person, one vote.

The Charter provides further that within 60 days following publication of the decennial federal census, the Director of Elections is required to report to the Board of Supervisors on whether the existing districts continue to meet the relevant legal requirements. If it is determined that the existing districts are not in compliance based on the census data, the Director of Elections shall notify the Board of Supervisors which, in turn, shall by ordinance convene and fund a nine-member task force, three members of which shall be appointed by the Elections Commission, three by the Board of Supervisors, and three by the Mayor.

The Task Force shall complete redrawing district lines before April 15 of the year in which the first election using the redrawn lines will be conducted. The Board of Supervisors may not revise the district boundaries established by the Task Force. The Charter provides that the City Attorney shall add the metes and bounds for the new district lines adopted by the Task Force as an appendix to

the Charter.

b. Task Force Composition, Officers and Staff

The members of the Task Force appointed by the Board of Supervisors were Mike Alonso, Jenny Lam, and Eric McDonnell. The members of the Task Force appointed by the Elections Commission were David Pilpel, Mark Schreiber, and Melissa Tidwell. The members of the Task Force appointed by the Mayor were Myong Leigh, Sonia Melara, and Marily Mondejar. At its first meeting on August 16, 2011, the Task Force selected Eric McDonnell as its Chair and Jenny Lam as its Vice-Chair.

In addition to its members, the Task Force was supported by (1) Kay Gulbengay and Gail Johnson from the Office of the Clerk of the Board of Supervisors; (2) Jon Givner, Mollie Lee, and Andrew Shen from the Office of the City Attorney; and (3) Tamina Alon, Jaime Clark, and Karin McDonald from Q2 Data and Research LLC. The selection of Q2 Data and Research LLC to provide technical assistance was made by the Elections Department in advance of the first meeting of the Task Force.

II. Criteria

The members of the Task Force met federal, state and local legal requirements when redrawing supervisorial district lines. On August 16, 2011, Deputy City Attorneys Givner, Lee, and Shen provided an analysis of the legal requirements relevant to the work of the Task Force. As they explained, these legal requirements include:

- Equal in population - supervisorial districts must adhere to the ideal of one person, one vote. Because it is nearly impossible to have exactly the same number of people in every district, the Charter allows variations of up to 1% (732 people per district). Additional variations up to 5% (3660 people per district) are allowed "if necessary to prevent dividing or diluting the voting power of minorities and/or to keep recognized neighborhoods intact."
- The Federal Voting Rights Act - the Federal Voting Rights Act prohibits the dilution of the voting power of racial and language minorities. Dilution of the voting power of a racial or language minority can occur when district lines are drawn in a manner that either fractures the minority group into several districts or packs the minority group into a few districts. Fracturing occurs when members of a minority group are spread among as many districts as possible, preventing them from concentrating their strength to elect representatives in some districts. Packing occurs when district lines are drawn so that members of a minority group are concentrated into as few districts as possible. This allows the minority group to elect

representatives from those few districts, but their votes cannot be used to influence the election of representatives in other districts.

- The Equal Protection Clause - although the Federal Voting Rights Act requires that the voting power of racial and language minorities not be diluted, the Equal Protection Clause of the 14th Amendment to the United States Constitution generally precludes the use of race as the predominant factor in redrawing district lines. This concept is often referred to as the *Shaw* principle, after the court case in which the United States Supreme Court explained this principle. In order to avoid a *Shaw* challenge to the redrawn district lines, the Task Force must take into consideration traditional districting principles (e.g., population, contiguity, compactness, neighborhoods, and communities of interest), in addition to race-related considerations.
- Communities of Interest - the San Francisco Charter requires, among other things, consideration of communities of interest within the City and County. Neither the Charter nor the courts define the term "communities of interest." Generally, a community of interest can exist when a community shares common geography, social, economic or political history; community organization; religious membership; income level; or education.

Based on these legal requirements, the Task Force adopted the following criteria to guide its work in redrawing the supervisorial district lines:

- (1) equal population (within 1%/5% as applicable) – a legal requirement described above;
- (2) Voting Rights Act compliance – Section 2 of the Voting Rights Act of 1965 prohibits voting practices or procedures that discriminate on the basis of race, color, or membership in one of the language minority groups identified in the Act. Section 2 may be violated if, in the context of the "totality of the circumstance of the local electoral process," the standard, practice, or procedure under consideration has the result of denying a racial or language minority an equal opportunity to participate in the political process;
- (3) contiguity – all parts of a district must be connected to each other by land, water, or bridge;
- (4) preserve recognized neighborhoods – the Charter permits a greater deviation from the statistical mean when necessary to avoid dividing neighborhoods by district lines;
- (5) preserve communities of interest – as described above; and

(6) compactness – considers the geography and appearance of the district

III. Description of the Task Force Process

The major components of the work of the Task Force were: (1) community education – by multiple forums (in person, on-line, written, etc) to educate the public on what redistricting is, its importance, and ways to get involved in the process; (2) data collection – including census data, city and department planning data, neighborhood data, and communities of interests; (3) community input – outreach to encourage residents to give input, react to draft maps and lines, and submit proposed maps; and (4) production of maps – development and adoption of maps with redrawn district lines based upon the data, community input, and legal counsel.

To accomplish these tasks, the Task Force held 30 meetings which ranged in length from approximately two to seven and a half hours each, totally approximately 100 hours. Half of these meetings were held in City Hall and half of these meetings were held at sites throughout the City. Public comment was received at each meeting on each agenda item. The Task Force received over 1300 written and oral public comments. All public comment can be found in the public file, which will be located in the Department of Elections. In addition, the Task Force website will be available at: <http://www.sfgov.org/rdtf>.

In addition, individual members of the Task Force participated in numerous additional outreach activities and made presentations at the invitation of various City agencies, educational institutions, and community organizations to provide information about the redistricting process.

At its initial meetings, the Task Force elected its officers, received briefings on redistricting from the Deputy City Attorneys and Q2, established its meeting schedule, and adopted by-laws and communications guidelines. Members from the prior 2002 Task Force and the 1995 Elections Task Force were invited to provide their advice about the process. Information was solicited from City agencies.

Counsel advised the Task Force about litigation risks related to Section 2 of the Voting Rights Act, and specifically about the decision of whether to consider race as a predominant factor in drawing a district in the Southeastern area of the City. After conferring with legal counsel, the Task Force determined by a vote of 6-1 not to consider race as a predominant factor in drawing districts in that area of the City.

The Task Force conducted outreach in three areas – community education, media outreach and social media. The Task Force relied on the community contact list of the Department of Elections and the Office of Civic Engagement and Immigrant Affairs to distribute information and garner interest about

redistricting – what it is, why it's important, and how people can get involved. The Task Force also explored alternative strategies including phone surveys, focus groups, and non-profit organizations to capture more perspectives than neighborhood groups and community individuals participating at the district meetings. However, the latter was not possible due to the amount of financial resources initially allocated to the Task Force and the time needed to hire consultants through the City process. However, the Task Force conducted 4 educational meetings across the City and 11 meetings in each of the supervisorial districts. The Task Force received considerable media coverage in various outlets including mainstream media, neighborhood newspapers and blogs, and ethnic media.

The Task Force was initially allocated \$25,000 for outreach. The majority of funds were used to produce (AV/Sound, translation, custodial, set-up/clean-up) the 15 meetings conducted outside City Hall. The Task Force requested additional funds and ultimately, were granted additional funds through the Board of Supervisors. The additional funds enabled the Task Force to hire a consultant who assisted in designing and placing ads in five ethnic community newspapers representing the Latino, African American, Chinese, Japanese and Filipino communities. The ads also had technology links to reach the younger population who are familiar with QR (Quick Response), Facebook and Twitter media. Following are the five newspapers used for this campaign: El Mensajero, Philippine News, Sing Tao Daily, Sun Reporter, and Nichi Bei. The tear sheet is attached in the Appendices. In addition, the Task Force sent out press releases, blogs and newsletters.

Beginning in October 2011 the Task Force began to focus on the criteria to be considered in connection with drawing new district lines. Community meetings were scheduled to inform and involve the residents of the City in the redistricting process. The redistricting criteria were adopted and an informational presentation about the redistricting process was prepared for use during four community meetings held throughout the City in November and December 2011.

The Task Force also provided direction to Q2 to develop initial conceptual maps for consideration in connection with the redistricting process. The first of these conceptual maps were presented at the community meeting of December 7, 2011.

In addition to the informational presentations made during community meetings, the Task Force also explored the availability of public access to mapping software to provide members of the public with the means to provide redistricting proposals. The Advancement Project provided the Task Force with the application "ReDrawSF" to facilitate online community engagement through map drawing in the redistricting process. The Advancement Project is an independent, non-profit organization dedicated to public policy, civil rights and

large-scale systems change to remedy inequality, expand opportunity, and open paths to upward mobility.

During the meetings held throughout San Francisco, the Task Force received public testimony and worked on the development of draft working maps based on the visualizations of the concepts discussed prior to the turn of the year. Throughout the process, the Task Force emphasized the need for public input.

In addition, redistricting proposals were solicited from the public. To facilitate these submissions, the Task Force adopted submission guidelines and deadlines. The Task Force set a March 2, 2012, deadline for submission of citywide map proposals (proposals which provide comprehensive redistricting proposals for the entire City). Several citywide map proposals were received. The proponents of these citywide maps were invited to present their proposals in an expanded time format from that allowed as part of the usual public comment. Separately, a March 29, 2012 deadline was set for submission of specific proposals for district lines.

At each of its meetings in 2012, the Task Force received public comment and considered revisions to the draft working maps. Several working maps were adopted by the Task Force between January 4 and April 11, 2012.

The process of reviewing, revising, and publishing the draft working maps continued through April 11, 2012, and the Task Force with a vote of 9-0 adopted its final map and concluded its work on April 14, 2012.

IV. District Considerations

District 1

- Anza Vista- whether to include in D1 or D2
- Seacliff- whether to include in D1 or D2
- USF- whether to include in D1 or D2 or to split between districts
- California/Lake Street line- where to draw the line between D1 and D2
- Lincoln Park- whether to include in D1 or D2
- Golden Gate Park- whether to include the park in one district or multiple districts that border the park (D1, D4, D5)

District 2

- Anza Vista - whether to include Anza Vista in D1, D2 or D5
- Cathedral Hill Area - whether to include this area in D2, D3, or D5
- Chinatown - impact of proposed borders between D2 and D3
- Japantown – where to establish the southern border of D2 with D5, especially with respect to the Booker T. Washington Community Service Center, the Hamilton Recreation Center, JCYC, Rosa Parks Elementary School and Chibi-Chan preschool, St. Xavier Church, the Buddhist Church, and the Westside Courts housing project

- Jordan Park - whether to include Jordan Park in D1 or D2
- Lake Street - whether Lake Street should be in D1 or D2
- Laurel Heights - whether to include Laurel Heights in D1 or D2
- Polk Street - whether to include portions of Polk Street in D2 or D3
- Russian Hill - whether Russian Hill should be in D2, D3 or split
- Sea Cliff - whether Sea Cliff should be in D1 or D2

District 3

- Market / Steuart / Mission / 3rd St - whether to include in D3 or D6
- Polk Street business corridor (southern blocks) – whether to include in D3 or D6
- Post Street vs. Geary between Van Ness and Mason - whether to include in D3 or D6
- Russian Hill (east) - whether to include in D3 or D2
- Union Square - whether to include in D3 or D6
- Yick Wo Elementary School - whether to include in D3 or D2

District 4

- Pine Like Park/Stern Grove- whether to include in D4 or D7
- Inner Sunset- where to draw the line between D4, D5 and D7
- Golden Gate Park- whether to include the park in one district or multiple districts that border the park (D1, D4, D5)
- Lakeshore/Merced Manor- whether to include in D4 or D7

District 5

- Anza Vista - whether to include in D1, D2, or D5
- Cathedral Hill CPMC site- whether to include in D5 or D6
- Civic Center west of Van Ness - whether to include in D5 or D6
- Golden Gate Park south and east of Kezar Dr - whether to keep in D1 or D5
- Hamilton Recreation Center - whether to include in D2 or D5
- Hayes Valley / Lower Haight - whether to include in D2 or D5
- Japantown - Whether to include in D2 or D5
- UCSF Parnassus Heights - whether to include in D5 or D8
- Western Addition Branch Library - whether to include in D1, D2 or D5
- Westside Courts Public Housing - whether to include in D2 or D5
- Booker T. Washington Community Service Center - whether to include in D1 or D5

District 6

- Filipino community unification
- Transbay Terminal – whether to include in D3 or D6
- Mission Bay – whether to include in D6 or D10 and whether should include line at 16th or Mariposa
- Single Residency Occupancy (SRO) share common interests
- Tenderloin - Post Street to Van Ness to keep Northern Market area intact
- Valencia/McCoppin Triangle: safety concerns in the neighborhood and whether should be made whole in D6 or D9

- Treasure Island- whether to include in D3 or D6

District 7

- Balboa Park- whether to include in District 7 or 11
- Clarendon and Johnstone area- whether to include in District 5 or 7
- Country Club Estates, Lakeshore Acres, and Merced Manor- whether to include in District 4 or 7
- Inner Sunset - whether to include all or portions in Districts 4, 5, or 7
- Lick-Wilmerding High School - whether to include in District 7 or 11
- Ocean Ave- whether to include in District 7 or 11
- Parnassus / Stanyan area - whether to include in District 5 or 7
- Sunnyside - whether to include in District 7 or 8

District 8

- Whether 55 Laguna development should be in D5 and D8
- Mission Dolores neighborhood and Dolores Park to be together in D8
- Duboce Triangle, park and neighborhood to remain in D8
- The Liberty Hill Neighbors Association requesting that Liberty Hill be together in D8 or D9
- Diamond Heights Neighborhood to be in D7 or D8

District 9

- The "North Mission" belonging to D9 or D6
- The Valencia Street corridor to maintain whole under either district D9 or D8
- The reunification of the Portola neighborhood under D9 or D10
- San Francisco General Hospital and the boundaries to the Freeway in D9 or D10
- McLaren Park (north)- whether to include in D9 or D10 or split between districts

District 10

- Dog patch - whether to include in D6 or D10
- General Hospital - whether to include in D9 or D10
- McLaren Park (south) - whether entirely in D10 or divide among districts
- Mission Bay - whether to include in D6 or D10
- Potrero Hill - whether to include in D6, D9, or D10
- Portola - whether to unite in D9 or D10

District 11

- Balboa Park - whether to include in D11 or D7
- Chicago Way - whether to include in D11 or D10
- Filipino Community - impact on COI given concentrations in Cayuga Park and Crocker - Amazon
- Ingleside - whether to include in D11 or D7
- McLaren Park - whether to divide into multiple districts (D9, D10, D11)
- Mission Terrace - whether to include in D11 or another district
- Ocean View / Merced Park Heights - whether to include in D11 or D7

V. Deviations In Excess of 1%

Seven Districts (D1, D2, D3, D5, D8, D9 and D11) have population deviations between 1%-5% of the statistical mean. These deviations were necessary to keep recognized neighborhoods intact in those districts and the surrounding areas. Those recognized neighborhoods are listed below:

District 1 (-4.781%)

- Outer Richmond
- Central Richmond
- Inner Richmond
- Lone Mountain/USF

District 2 (-4.998%)

- Seacliff
- Presidio Heights
- Anza Vista
- Laurel Heights/Jordan Park
- Presidio
- Marina
- Pacific Heights

District 3 (-3.837%)

- Northern Waterfront
- North Beach
- Telegraph Hill
- Financial District
- Union Square
- Nob Hill
- Chinatown

District 4 (-0.963%)

- Outer Sunset
- Sunset
- Pine Lake Park

District 5 (1.908%)

- Japantown/Fillmore
- Western Addition
- Alamo Square
- Hayes Valley
- North of Panhandle
- Cole Valley
- Haight Ashbury

District 6 (0.964%)

- SOMA (including SOMA Pilipinas)
- Treasure Island/Yerba Buena Island
- Mission Bay
- South Beach/Rincon Hill/Transbay

District 7 (-0.637%)

- Balboa Terrace
- Forest Knolls
- Midtown Terrace
- West Portal
- Forest Hill
- Sherwood Forest
- Mount Davidson Manor
- Ingleside Terrace
- Westwood Park
- Westwood Highlands
- Miraloma Park
- Monterey Heights
- Inner Parkside
- Golden Gate Heights
- Merced Manor
- Lakeshore Acres
- Lakeside
- Stonestown
- Mt. Sutro Woods
- The Woods
- Ardenwood
- St. Francis
- Westwood Highlands
- Sunnyside
- Lake Merced
- Park Merced

District 8 (3.474%)

- Noe Valley
- Diamond Heights
- Castro/Upper Market
- Glen Park
- Upper Market/Eureka Heights
- Eureka Valley

District 9 (4.804%)

- Portola

District 10 (-0.870%)

- Silver Terrace

- Visitacion Valley
- Little Hollywood
- Bayview/Hunter's Point
- Central Waterfront/Dogpatch

District 11 (4.938%)

- OMI (Oceanview, Merced Heights and Ingleside Heights)
- Crocker Amazon
- Outer Mission
- Excelsior
- Mission Terrace.

VI. Lessons Learned and Recommendations

A. Group Recommendations

Process: The work of the task force was facilitated greatly by having the technical consultant in place by the time of its first meeting. In addition to technical considerations, the work of the Task Force depends on public participation, particularly with respect to identifying neighborhood boundaries and communities of interest. Therefore, it seems that the work of the task force would also be facilitated by having a professional outreach consultant with sufficient financial resources in place at the earliest possible time to commence the community engagement process. The consultant should be knowledgeable of community outreach via print, electronic and social media. In addition, the consultant(s) should have knowledge of neighborhoods and citywide organizations and strategic outreach to engage public housing residents, seniors, and communities who otherwise are not involved in organized associations or organizations and who face particular challenges in attending public meetings. The consultant should also demonstrate knowledge of working and reaching out to the various cultural and linguistic communities in San Francisco. Critical to the success of the neighborhood meetings is to develop a publicity campaign that could include press releases to reach neighborhood organizations, community newspapers and newsletters, blogs, social media and a phone campaign.

Community Outreach: The Task Force's overall work plan should include an early community outreach element, such as a media event, town hall meeting or press conference to engage the public about the redistricting process, its impact on neighborhoods and communities of color. Involving general media, as well as the ethnic media through regular briefings to encourage informed public participation from communities otherwise not involved in civic discourse. Conducting neighborhood meetings at all of the 11 supervisorial districts is important.

The Task Force should consider outreach to City departments; primarily those that maintain and are knowledgeable of specific data related to recognized neighborhoods and communities of interest.

Public Comment: The Task Force's deliberations emphasized hearing and responding to public input related to neighborhoods, communities of interest, equalizing population, and other established criteria. The Task Force did not emphasize political considerations, such as distribution of power among various political blocs or coalitions in the City. The relatively low level of political pressure or emphasis allowed the Task Force to be more responsive to community concerns that were more clearly related to its established charge. Future Task Forces would be well served by continuing this dynamic.

Contracting with Public Entities: Not understanding the city's procurement process, contracting and bidding requirements on how to retain services of outside consultants severely hindered the Task Force's ability to implement its community outreach plan. Developing the list of nonprofit organizations, neighborhood groups, known community leaders and ethnic media list was difficult and required many hours. The Task Force should hire a consultant who can effectively implement outreach activities.

B. Individual Task Force Member Recommendation

Member Pilpel

Process: The City should consider that resources and time constrain the work of the Task Force and that having sufficient resources available early facilitates the work. The City should consider a Charter Amendment to change deadlines so as to both create the Task Force earlier and complete the work earlier. The City should consider having the Task Force approve the redistricting consultant scope of work or at a minimum having the Task Force approve the selection of the redistricting consultant. The Task Force should consider developing, adopting, and revising as necessary an overall work program, including specific tasks, responsibilities, and timelines. The Task Force should consider hearing from past Task Force members at one of the first few Task Force meetings. The Task Force should consider increasing outreach to City departments and other public agencies (such as the San Francisco Unified School District) that have information about recognized neighborhoods, communities of interest, or other relevant data, including having formal presentations to the Task Force. The Task Force should consider having early discussions about citywide goals, demographic and population trends, and land use and transportation plans and projects. The Task Force should consider the implications of redistricting on voter registration, particularly disparities in voter registration by district.

Community Outreach: The Task Force should consider including a Community Outreach element in its overall work program to address Task Force meetings in the community, ethnic and neighborhood media outreach, and presentations to neighborhood and citywide organizations. The Task Force should consider having a community outreach consultant separate from the redistricting consultant. The Task Force should consider encouraging ongoing informed public participation in its meetings and activities. The Task Force should consider including specific strategies to engage public housing residents, seniors, youth, and others who are not involved in organized groups or face particular challenges in attending public meetings.

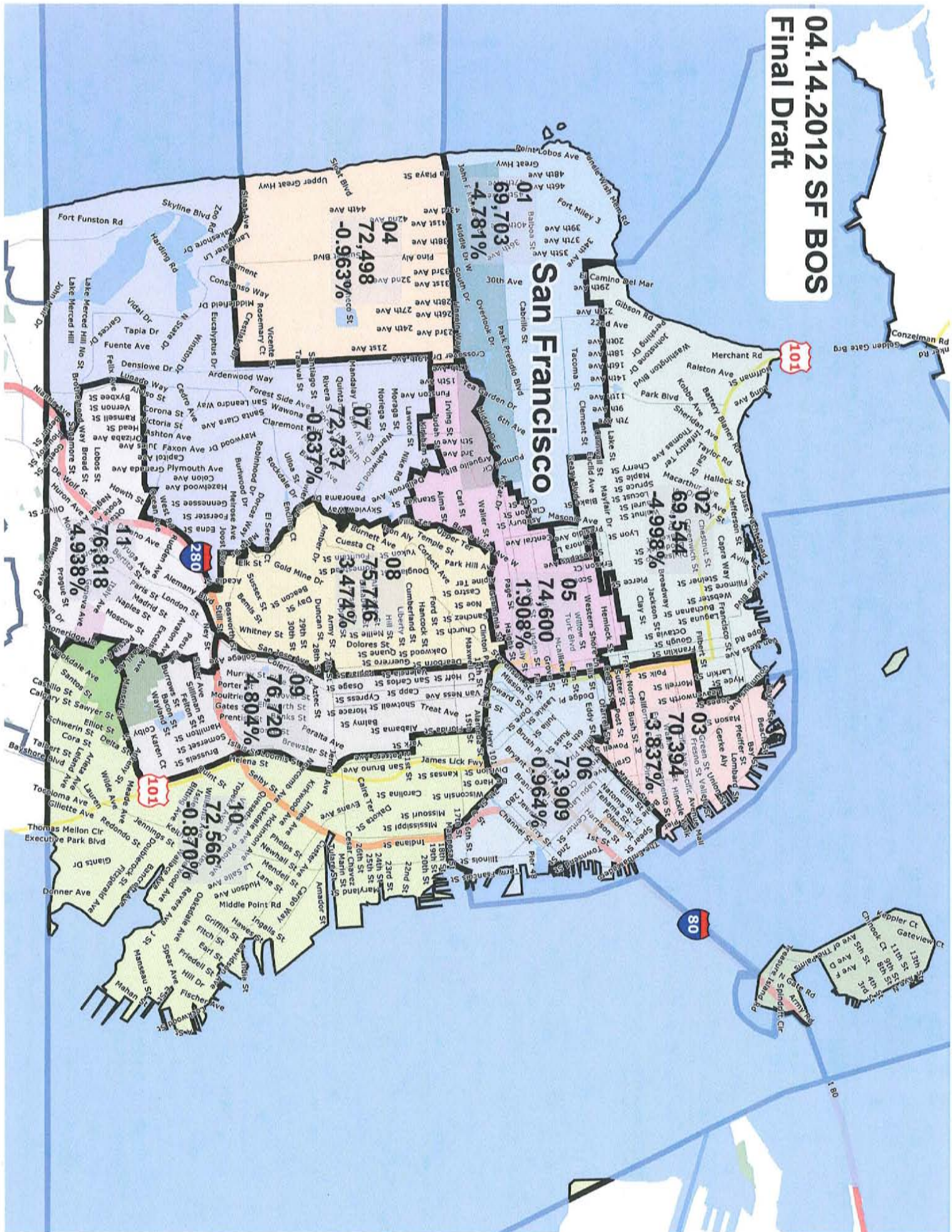
Decision-making: Task Force members should consider having an opportunity to meet each other prior to electing officers. The Task Force should consider attempting to work collaboratively, developing consensus, and also allowing for minority positions to be expressed and memorialized. The Task Force should consider bearing in mind that district lines are drawn for a 10-year period and thus decisions should not be driven by current land use controversies.

Appendices

** Note: As the Appendices are finalized, they will be added to this Report.*

- I. Final Map
- II. District Descriptions
- III. Individual District Maps
- IV. Statistics (for each district)
- V. Community Newspaper Advertisement

04.14.2012 SF BOS
Final Draft



San Francisco Redistricting Task Force 2012 Board of Supervisors District Descriptions

Please note that these district descriptions do not show every small move the district lines make. These descriptions are summaries of the Board of Supervisors districts and are not the legal “metes and bounds.” For exact definitions of the district boundaries, please refer to the Metes & Bounds report.

District 1 – beginning north of 32nd Ave at the shoreline – south just west of 32nd Ave to include homes on both sides of 32nd Ave, east at California St, north at 26th Ave, east at Lake St, south along 6th Ave, east along California, south at Arguello Blvd, east at Geary Blvd to Masonic Ave, south on Masonic Ave, west along Fulton St, south at Cole St, west at Grove St, south along Shrader St, west on Hayes St, south along Stanyan St, west along John F Kennedy Dr, south along Middle Dr E, west along MLK Jr Dr, west along South Dr, west on MLK Jr Dr, south along Crossover Dr to Lincoln Way, west on Lincoln to shoreline.

District 2 – beginning at Leavenworth at the shoreline – south along Leavenworth St, southeast along Columbus Ave, south at Jones St, west along Lombard St, south at Leavenworth St, east on Greenwich St, south along Jones St, west at Union St, south at Van Ness Ave, west along Post St, south at Franklin St, west along Geary Blvd, north along Gough St, west along Pine St, north at Octavia St, west along California St, south at Buchanan, west at Pine St, south along Scott St, east on Bush St, south along Steiner St, west at Sutter St, south at Presidio Ave, east along Post St, south along Broderick St to Turk Blvd, west on Turk Blvd, north on Masonic Ave, west on Geary Blvd, north along Arguello Blvd, west at California St, north on 6th Ave, west on Lake St, south on 26th Ave, west on California to just west of 32nd Ave, north just west of 32nd Ave to include homes on both sides of 32nd Ave, moving north to there 32nd Ave would hit the shoreline.

District 3 – beginning at Mission St and the shoreline – southwest on Mission St, northwest along Steuart St, southwest along Market St, north along Cyril Magnin St, west on Eddy St, north on Mason St, east at Ellis St, north on Cyril Magnin St, west on O’Farrell St, north at Taylor St, west along Geary St, north on Leavenworth St, west along Post St, south on Polk St, west on Cedar St, north on Van Ness Ave, east on Union St, north along Jones St, west along Greenwich St, north on Leavenworth St, east on Lombard St, north on Jones St, northwest along Columbus Ave, north on Leavenworth to the shoreline

District 4 – beginning at Lincoln Way and the shoreline – east on Lincoln Way to 17th Ave, south on 17th Ave, west at Judah St, south along 19th Ave, west along Sloat to the shoreline.

District 5 – beginning at Crossover Drive and Lincoln Way – north along Crossover, east along MLK Jr Dr to South Dr, east along South Dr to MLK Jr Dr, east on MLK Jr Dr to Middle Dr E, east on Middle Dr E, east on John F Kennedy Dr, north on Stanyan St,

east at Hayes St, north on Shrader St, east at Grove St, north along Cole St, east at Fulton St, north along Masonic Ave, east at Turk Blvd, north on Broderick St, west on Post St, north on Presidio Ave, east on Sutter St, north on Steiner St, west along Bush St, north at Scott St, east on Pine St, north on Buchanan St, east on California St, south at Octavia St, east on Pine St, south along Gough St, east at Geary Blvd, north on Franklin St, east along Post St, south on Van Ness Ave, southwest at Market St, north on Octavia St, west along Waller St, north on Laguna St, west at Haight St, south at Buchanan St, west on Hermann St, north on Steiner St, west on Waller St, northwest at Buena Vista Ave E, west at Haight St, south along Buena Vista Ave W, west along Frederick St, south on Ashbury St, Ashbury St becomes Clayton St, Clayton St becomes Twin Peaks Blvd, south along Twin Peaks Blvd, west at Clarendon Ave, north at Stanyan St, west at Belgrave Ave, west along Johnstone Dr, north along Medical Center Way, west on Parnassus Ave, south on 4th Ave, west on Kirkham St, north on 9th Ave, west at Judah St, north on 17th Ave, west on Lincoln Way to Crossover Dr.

District 6 – beginning at Terry Francois St east of 16th Street at the shoreline – southwest along Terry Francois St, west along Mariposa St, north on I- 280 to Hubbell St, west at Hubbell St to 7th St, northwest along 7th St, west at Townsend St, west along Division St, west along Central Fwy to 13th St, west following 13th St, 13th St becomes Duboce, west following Duboce Ave, following census block lines northwest of Duboce and Valencia to Market St, northeast along Market St, north at Van Ness Ave, east at Cedar St, north at Polk St, east at Post St to Leavenworth St, south on Leavenworth St, following Geary St east to Taylor St, south at Taylor St, east on O’Farrell St, south on Cyril Magnin St, west on Ellis St, south on Mason St, east at Eddy St, south on Cyril Magnin St, northeast along Market St, southeast at Steuart St, northeast along Mission St to shoreline.

District 7 – beginning at Sloat Blvd and the shoreline – east following Sloat to 19th Ave, north at 19th Ave, east along Judah St, south at 9th Ave, east along Kirkham St, north on 4th Ave, east on Parnassus Ave, south on Medical Center Way, east at Johnstone Dr, east on Belgrave Ave, south on Stanyan St to Clarendon Ave, east at Clarendon Ave, south following Twin Peaks Blvd, Twin Peaks Blvd becomes O’Shaughnessy Blvd, south following O’Shaughnessy Blvd, east at Bosworth St, following south on Congo St, east at Joost Ave, southwest then east on Monterey, south along San Jose Ave, southwest along I- 280 to Geneva Ave, west at Geneva Ave, west along Ocean Ave, south at Harold Ave, west at Holloway Ave to Junipero Serra Blvd, south on Junipero Serra Blvd, east at Brotherhood Way, south along Orizaba Ave, south along Palmetto Ave, following I- 280 to SF/Daly City border, following SF/Daly City west to the shoreline.

District 8 – beginning at Twin Peaks Blvd and Clayton St – north following Clayton St, Clayton becomes Ashbury St, north following Ashbury, east at Frederick St, north along Buena Vista Ave W, east at Haight St, southeast following Buena Vista Ave E, east on Waller St, south along Steiner St, east on Hermann St, north on Buchanan St, east on Haight St, south on Laguna St, east on Waller St, south on Octavia St to Market St, northeast on Market St, following census block lines southeast to Valencia St, south on Valencia St, west on Cesar Chavez, south following Guerrero St, east along 27th St,

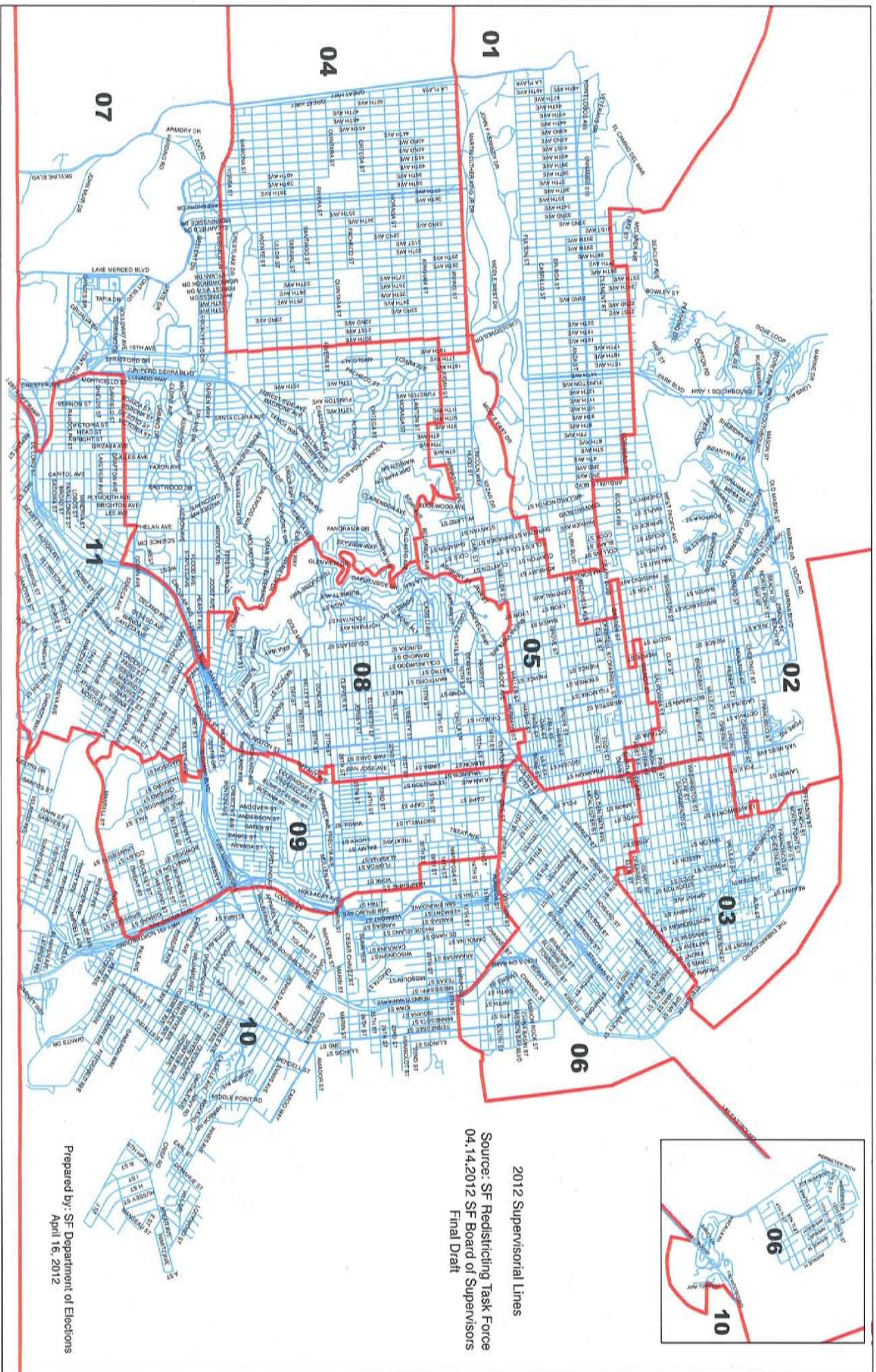
south following San Jose Ave, east on Duncan St, southwest on Tiffany Ave, west on 29th St, south following San Jose Ave, east on Randall St, south following Mission St, southwest on Alemany Blvd, northwest on Tingley St, east along I-280, north on San Jose, west the northeast following Monterey Blvd, west along Joost Ave, north following Congo St to Bosworth St, west on Bosworth, Bosworth becomes O'Shaughnessy Blvd, following O'Shaughnessy Blvd north, O'Shaughnessy becomes Twin Peaks Blvd, north on Twin Peaks to Clayton.

District 9 – beginning at Mission St and I-280 – north following Mission St, west on Randall St, north following San Jose Ave, east at 29th St, north on Tiffany Ave, west at Duncan St, north following San Jose Ave, west on 27th St, north following Guerrero St, east on Cesar Chavez, north on Valencia St, following census block lines northeast to 13th St, east following 13th St, 13th Street becomes Central Fwy, south along Bryant St, east on 20th St, south on Potrero Ave, east on Cesar Chavez St, south following Bay Shore Blvd, west on I- 280, south following James Lick Fwy to Paul Ave, east along Paul Ave, south on Bay Shore Blvd, south on Wheat St, west on Salinas Ave, west on Mansell St, west following Brazil Ave, John McLaren Park to Burrows St, east at Burrows St, north on Peru Ave, north on Valmar Terrace, north along Madison St, east on Silver Ave, following census lines north Gladstone Dr, west along Gladstone Dr, north on Stoneyford Ave, west on Cambridge St to Stoneybrook Ave, north on following I- 280 west to Mission St.

District 10 – beginning at the SF/Daly City border and census block line east of Red Leaf Ct and west of Robinson Drive – following census block line north to Walbridge St, east on Walbridge St, west along Geneva Ave, north between John McLaren Park and Luther Burbank High School to la Grande Ave, north along la Grande Ave, east on Persia Ave, east following Mansell, east on Salinas Ave, north at Wheat St, north along Bay Shore Blvd, west at Paul Ave, north following James Lick Fwy, east at I- 280 to Bay Shore Blvd, north following Bay Shore Blvd, we son Cesar Chavez, north at Potrero Ave, west on 20th St, north on Bryant St, east following Central Fwy, east at Division St, northeast on Townsend St, southeast on 7th St to Hubbell St, east along Hubbell St, south following I- 280 to Mariposa St, east on Mariposa St, north along Terry Francois St, east to shoreline at 16th Street.

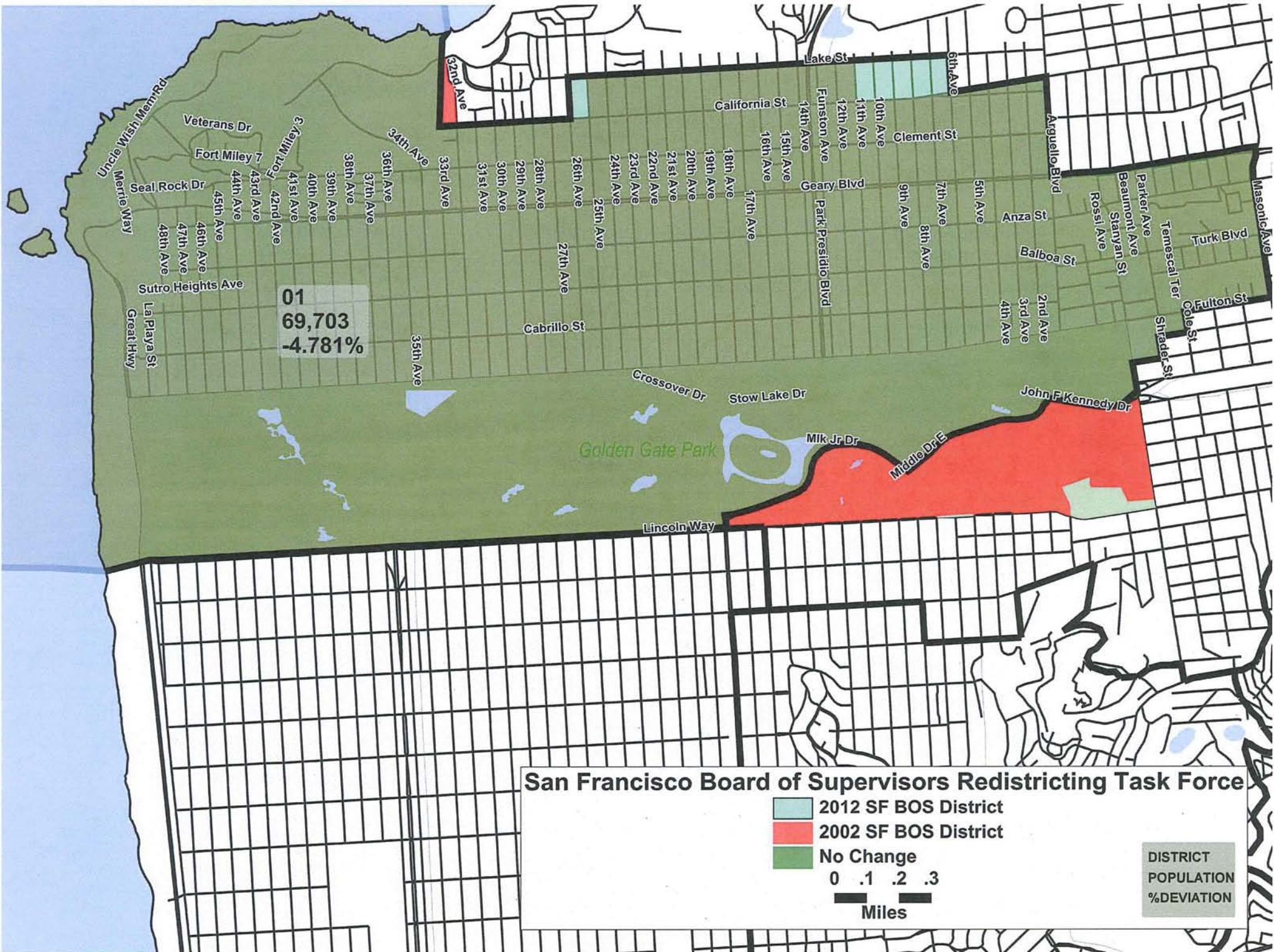
District 11 – beginning at Junipero Serra Blvd and Holloway – following Holloway east, north at Harold Ave, east on Ocean Ave, east along Geneva Ave, north following I- 280, southeast following Tingley St, northeast on Alemany Blvd, north on Mission to I- 280, east following I-280, south on Stoneybrook Ave, east on Cambridge St, south on Stoneyford Ave, east at Gladstone Dr, following census lines south to Silver Ave, west along Silver Ave, south along Madison St, south along Valmar Terrace, south on Peru Ave, west at Burrows St, south along John McLaren Park boundary, east at Brazil Ave, west at Persia Ave, south on la Grande Ave, south between Luther Burbank High School and John McLaren Park to Geneva Ave, east following Geneva Ave, west at Walbridge St, south following census block lines to SF/Daly City border between Robinson and Red Leaf Ct, west following SF/Daly City border, west at Saint Charles Ave, following I-280

north and east to Orizaba, north on Orizaba Ave, west along Brotherhood Way to Junipero Serra Blvd, north on Junipero Serra Blvd to Holloway.



2012 Supervisorial Lines
 Source: SF Redistricting Task Force
 04.14.2012 SF Board of Supervisors
 Final Draft

Prepared by: SF Department of Elections
 April 16, 2012



Uncle Wish Mem Rd
Veterans Dr
Fort Miley 7
Seal Rock Dr
Merrill Way
44th Ave
43rd Ave
42nd Ave
41st Ave
40th Ave
39th Ave
38th Ave
37th Ave
36th Ave
35th Ave
34th Ave
33rd Ave
31st Ave
30th Ave
29th Ave
28th Ave
27th Ave
26th Ave
25th Ave
24th Ave
23rd Ave
22nd Ave
21st Ave
20th Ave
19th Ave
18th Ave
17th Ave
16th Ave
15th Ave
14th Ave
13th Ave
12th Ave
11th Ave
10th Ave
9th Ave
8th Ave
7th Ave
6th Ave
5th Ave
4th Ave
3rd Ave
2nd Ave
Sutro Heights Ave
La Playa St
Great Hwy

Lake St
California St
Funston Ave
12th Ave
11th Ave
10th Ave
Clement St
Arguello Blvd
Parker Ave
Beaumont Ave
Stanyan St
Rossi Ave
Turk Blvd
Masonic Ave
Temescal Ter
Fulton St
Cole St
Shrader St
Anza St
Balboa St
Park Presidio Blvd
Geary Blvd
John F Kennedy Dr
Middle Dr E
Stow Lake Dr
Crossover Dr
Mik Jr Dr
Lincoln Way

Golden Gate Park



101

101

32nd Ave
El Camino Del Mar
27th Ave
26th Ave
Gibson Rd
Battery Chamberlin Rd

Golden Gate Park

Marine Dr

Hoffman St

Storey Ave

Battery Safford Rd

Greenough Ave

Wisser Ct

Compton Rd

Baker Ct

Brush Ln

Schofield

McChair Ct

Muir Ct

Howard Ct

Battery Caulfield Rd

Wyman Ave

Lake St

California St

6th Ave

Arguello Blvd

Jordan Ave

Parker Ave

Commonwealth Ave

Maple St

Cherry St

Presidio Ter

Finley Rd

Washington Blvd

Piper Loop

Sheridan Ave

Inclinator Rd

McDowell Ave

Rod St

Schofield Rd

State Hwy 1

Long Ave

Howe Rd

Howe Rd

Ralston Ave

Kobbe Ave

Park Blvd

Washingtn Blvd

Thomas Ave

Bliss Rd

Graham St

Owens St

Martinez St

Fernandez St

Barnard Ave

Wallen Ct

Portola St

Locust St

Laurel St

Walnut St

Presidio Blvd

Presidio Ave

Mayfair Dr

Euclid Ave

Masonic Ave

Turk Blvd

Sutter St

Geary Blvd

Post St

Pine St

Buchanan St

Jackson St

Broadway

Pacific Ave

Vallejo St

Green St

Union St

Franklin St

MacArthur Ave

Funston Rd

Marina Blvd

Webster St

Laguna St

Octavia St

Filbert St

Moulton St

Magnolia St

Richardson Ave

Miley St

Letterman Dr

Simonds Loop

Shafer Rd

Vista Ct

Lyons St

Jaus

Mason St

Doyle

Gorgas Ave

Edlie Rd

Truby St

Sternberg Rd

Richardson Ave

Baker St

Avila St

Scott St

Pierce St

Mallorca Way

Retro Way

Fillmore St

Marina Blvd

Green Dr

Broderick St

Divisadero St

Yacht Road 1

Beach St

N Point St

Bay St

Francisco St

Chestnut St

Lombard St

Jones St

Columbus Ave

Van Ness Ave

Franklin St

Gough St

Franklin St

Franklin St

Franklin St

Franklin St

Franklin St

Franklin St

Franklin St

Franklin St

Franklin St

Franklin St

Franklin St

Franklin St

Franklin St

Franklin St

Franklin St

Franklin St

Franklin St

Franklin St

Franklin St

Franklin St

Franklin St

Franklin St

Franklin St

Franklin St

Franklin St

Franklin St

Franklin St

Franklin St

Franklin St

Franklin St

Franklin St

Franklin St

Franklin St

Franklin St

Franklin St

Franklin St

Franklin St

Franklin St

Franklin St

Franklin St

Franklin St

Franklin St

Franklin St

Franklin St

Franklin St

Franklin St

Franklin St

Franklin St

Franklin St

Franklin St

Franklin St

Franklin St

Franklin St

Franklin St

Franklin St

Franklin St

Franklin St

Franklin St

Franklin St

Franklin St

Franklin St

Franklin St

Franklin St

Franklin St

Franklin St

Franklin St

Franklin St

Franklin St

Franklin St

Franklin St

Franklin St

Franklin St

Franklin St

Franklin St

Franklin St

Franklin St

Franklin St

Franklin St

Franklin St

Franklin St

Franklin St

Franklin St

Franklin St

Franklin St

Franklin St

Franklin St

Franklin St

Franklin St

Franklin St

Franklin St

Franklin St

Franklin St

Franklin St

Franklin St

Franklin St

Franklin St

Franklin St

Franklin St

Franklin St

Franklin St

Franklin St

Franklin St

Franklin St

Franklin St

Franklin St

Franklin St

Franklin St

Franklin St

Franklin St

Franklin St

Franklin St

Franklin St

Franklin St

Franklin St

Franklin St

Franklin St

Franklin St

Franklin St

Franklin St

Franklin St

Franklin St

Franklin St

Franklin St

Franklin St

Franklin St

Franklin St

Franklin St

Franklin St

Franklin St

Franklin St

Franklin St

Franklin St

Franklin St

Franklin St

Franklin St

Franklin St

Franklin St

Franklin St

Franklin St

Franklin St

Franklin St

Franklin St

Franklin St

Franklin St

Franklin St

Franklin St

Franklin St

Franklin St

Franklin St

Franklin St

Franklin St

Franklin St

Franklin St

Franklin St

Franklin St

Franklin St

Franklin St

Franklin St

Franklin St

Franklin St

Franklin St

Franklin St

Franklin St

Franklin St

Franklin St

Franklin St

Franklin St

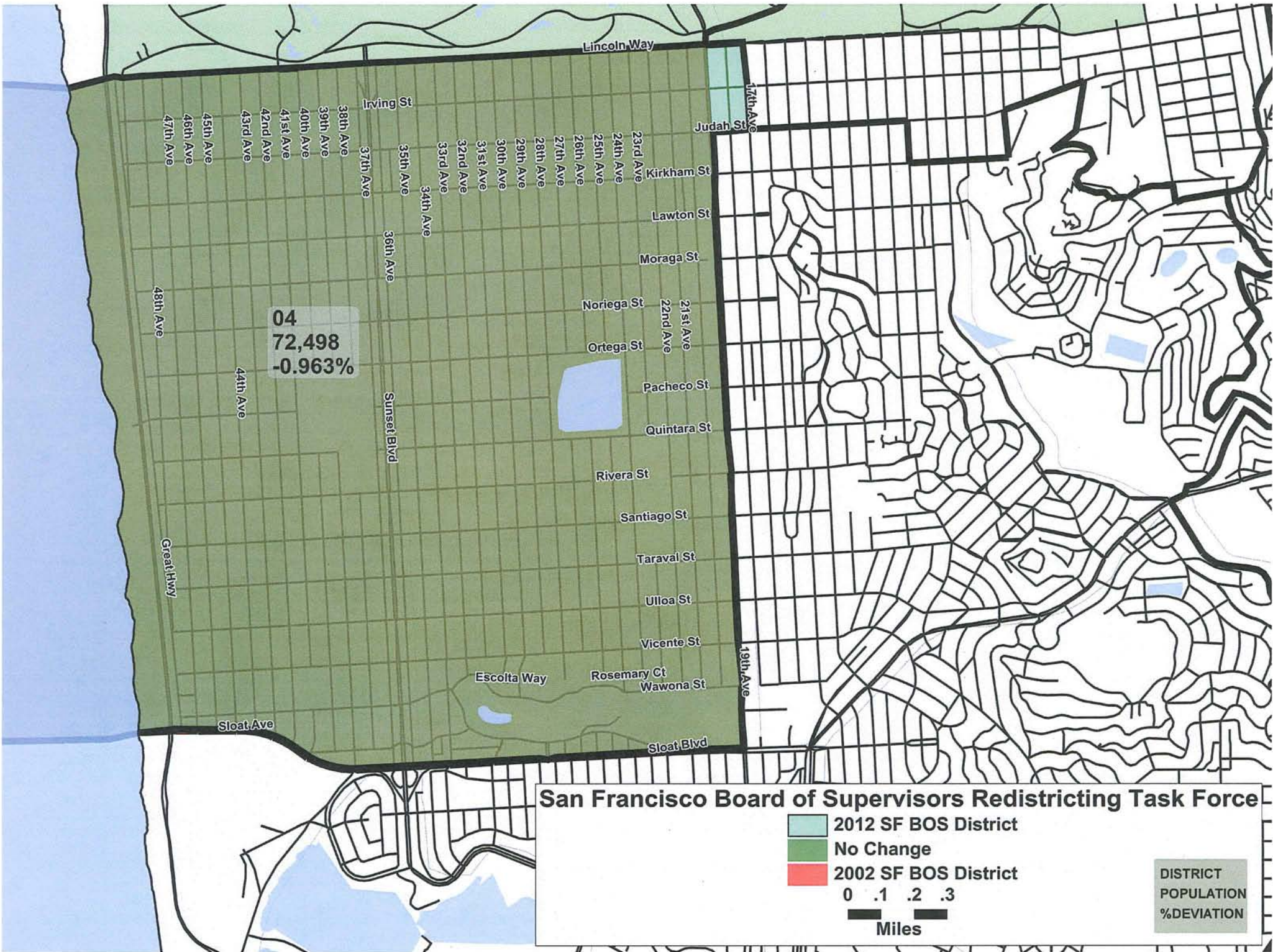
Franklin St

Franklin St

Franklin St

Franklin St





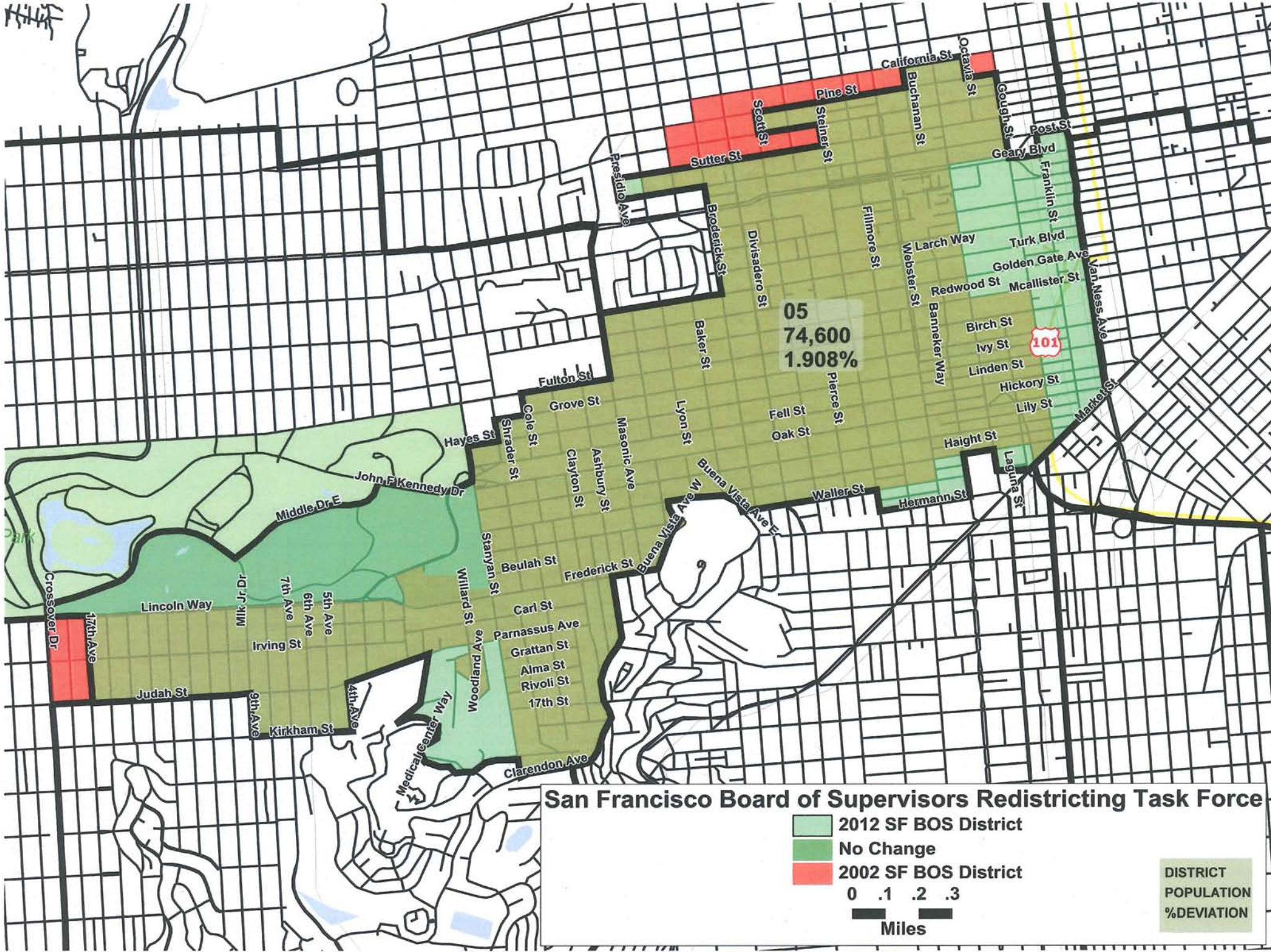
San Francisco Board of Supervisors Redistricting Task Force

2012 SF BOS District
 No Change
 2002 SF BOS District

0 .1 .2 .3

 Miles

DISTRICT
POPULATION
%DEVIATION



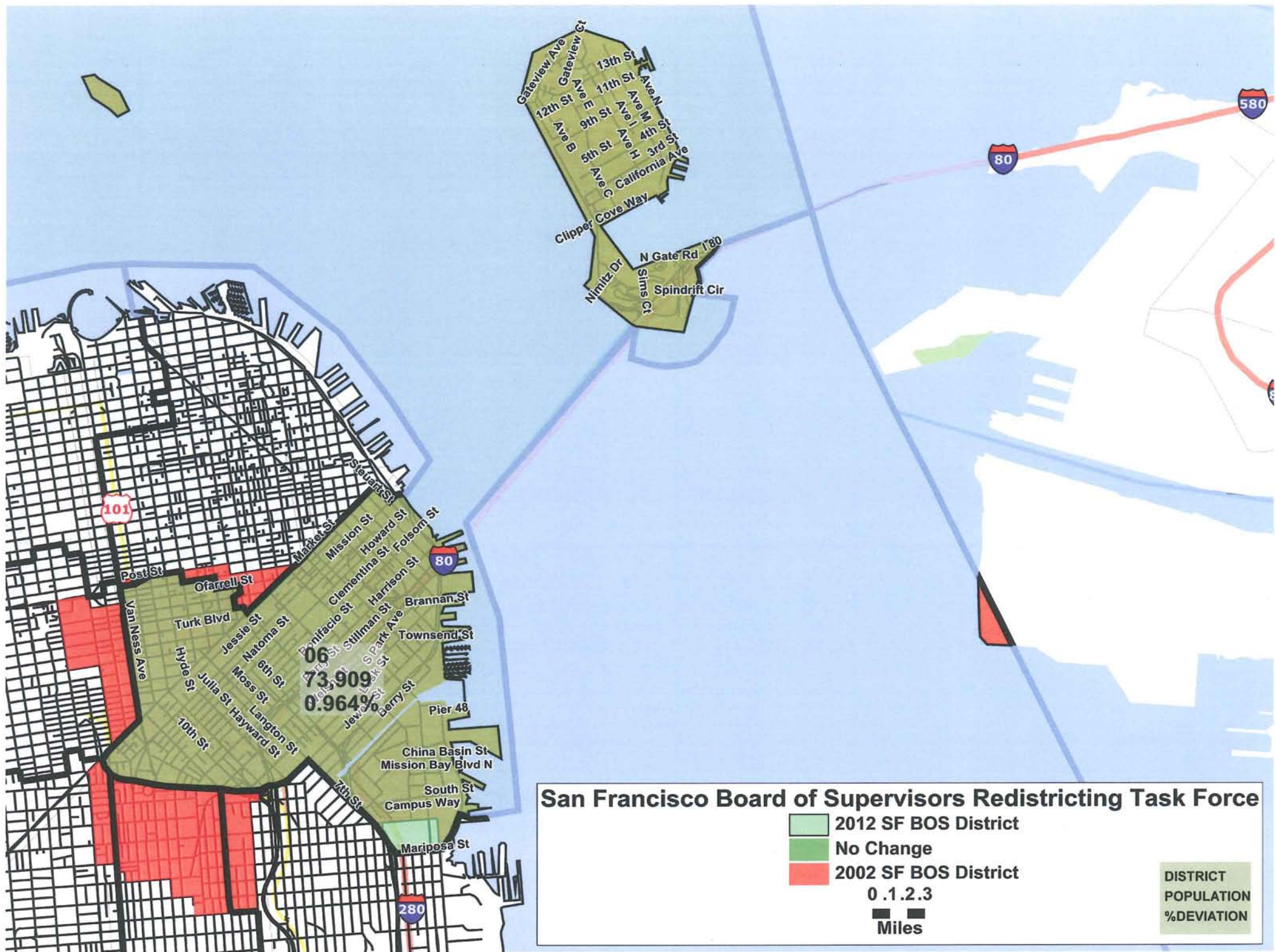
San Francisco Board of Supervisors Redistricting Task Force

- 2012 SF BOS District
- No Change
- 2002 SF BOS District

0 .1 .2 .3

Miles

DISTRICT
POPULATION
%DEVIATION



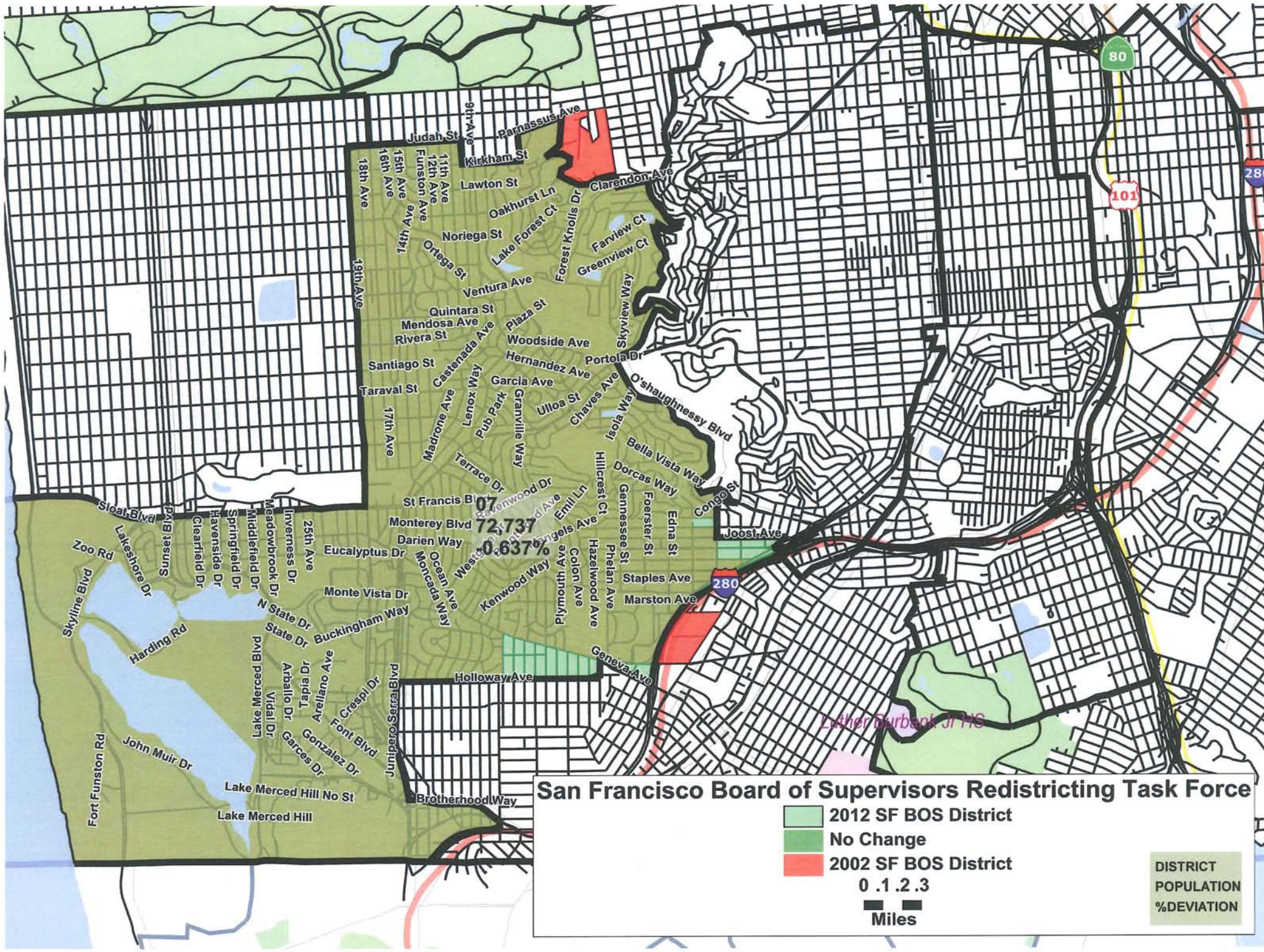
San Francisco Board of Supervisors Redistricting Task Force

- 2012 SF BOS District
- No Change
- 2002 SF BOS District

0 1 2 3

Miles

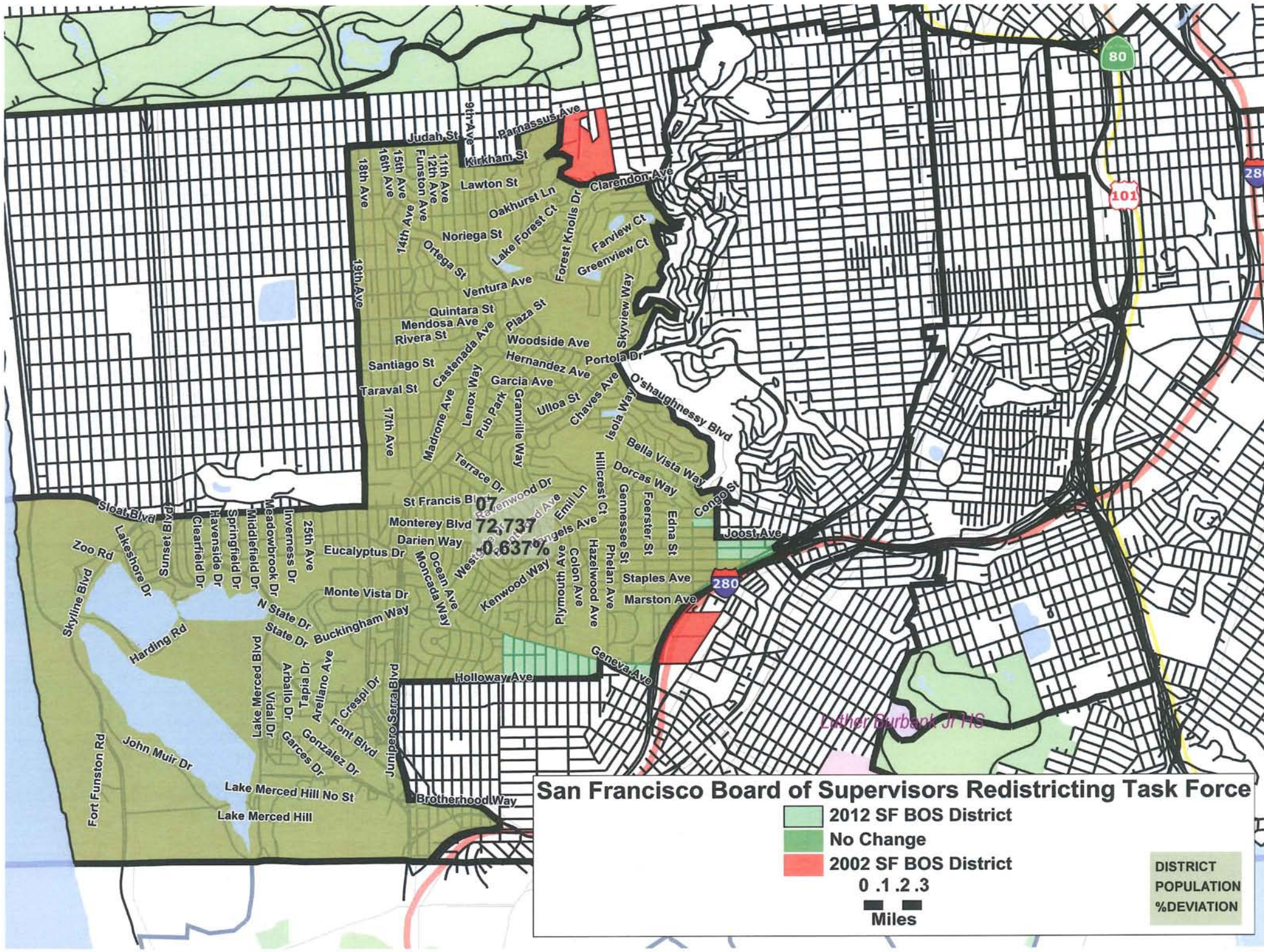
DISTRICT
POPULATION
%DEVIATION

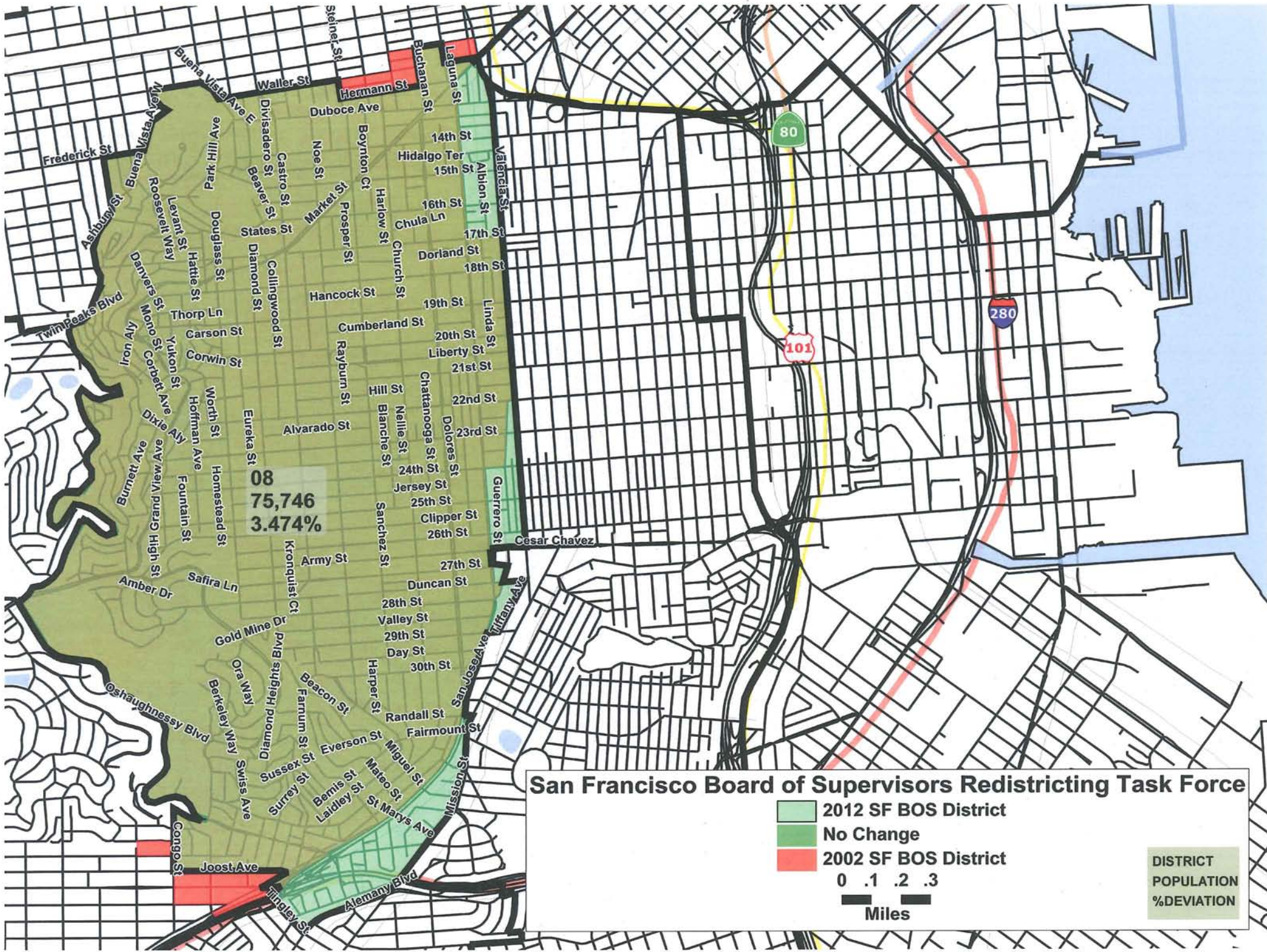


72,737
 0.637%

Luther Burbank Jr HS

San Francisco Board of Supervisors Redistricting Task Force





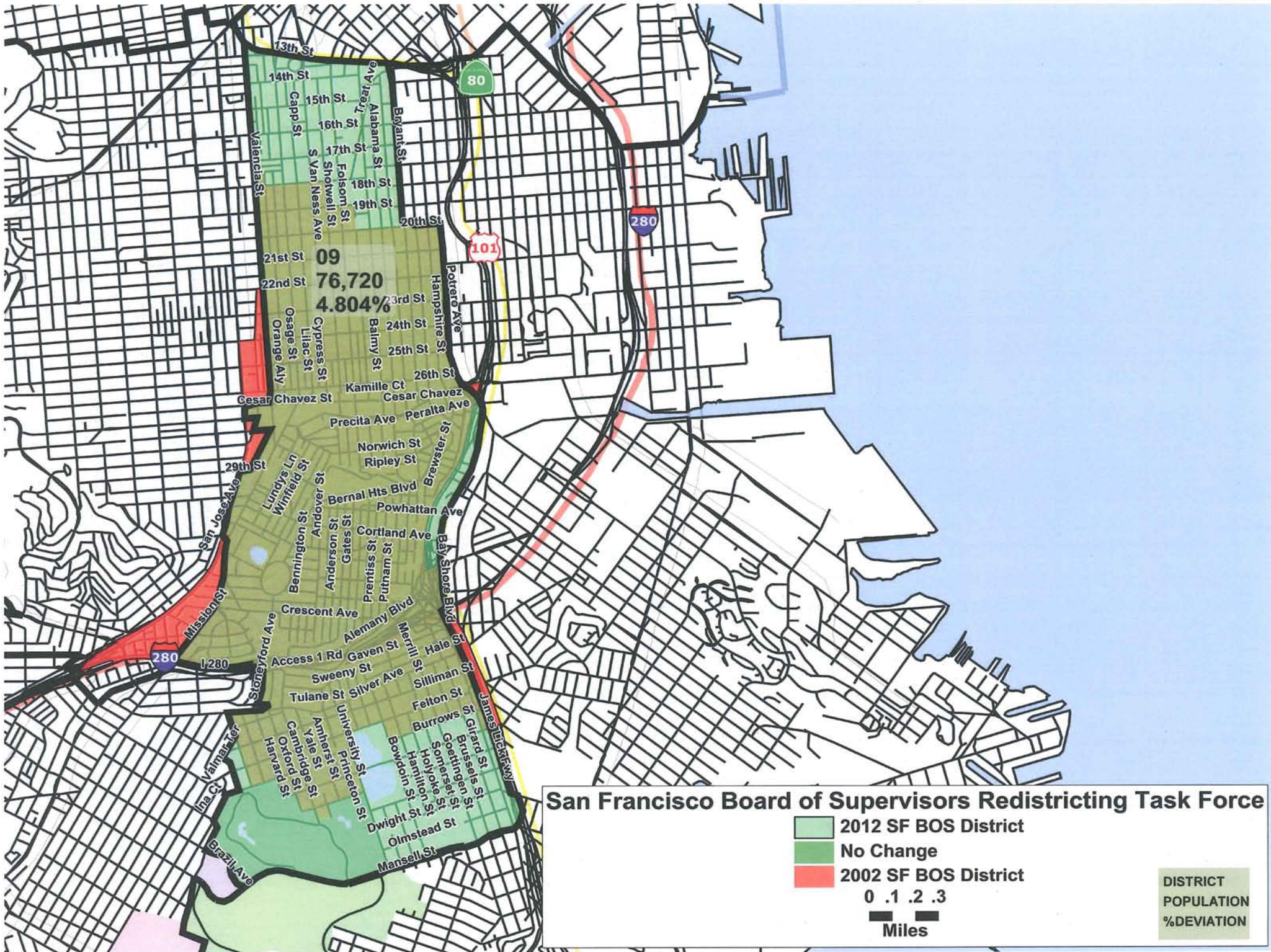
San Francisco Board of Supervisors Redistricting Task Force

- 2012 SF BOS District
- No Change
- 2002 SF BOS District

0 .1 .2 .3

Miles

DISTRICT
POPULATION
%DEVIATION



13th St
 14th St
 15th St
 16th St
 17th St
 18th St
 19th St
 20th St
 21st St
 22nd St
 23rd St
 24th St
 25th St
 26th St
 29th St

Valencia St
 Capp St
 S Van Ness Ave
 Shotwell St
 Folsom St
 Alabama St
 Bryant St
 Treat Ave
 Potrero Ave
 Hampshire St
 Balmly St
 Kamille Ct
 Cesar Chavez St
 Precita Ave
 Peralta Ave
 Norwich St
 Ripley St
 Bernal Hts Blvd
 Powhattan Ave
 Cortland Ave
 Gates St
 Putnam St
 Merril St
 Hale St
 Silliman St
 Felton St
 Burrows St
 Geary St
 Brunses St
 Serrano St
 Holyoke St
 Hamilton St
 Bowdoin St
 Dwight St
 Olmstead St
 Mansell St

San Jose Ave
 Lundy's Ln
 Winfield St
 Andover St
 Bennington St
 Anderson St
 Prentiss St
 Putnam St
 Crescent Ave
 Access 1 Rd
 Sweeny St
 Tulane St
 Silver Ave
 University St
 Princeton St
 Bowdoin St
 Dwight St
 Olmstead St
 Mansell St

Mission St
 Stoneyford Ave
 Vernal St
 Harvard St
 Cambridge St
 Oxford St
 Yale St
 Anheret St
 University St
 Princeton St
 Bowdoin St
 Dwight St
 Olmstead St
 Mansell St

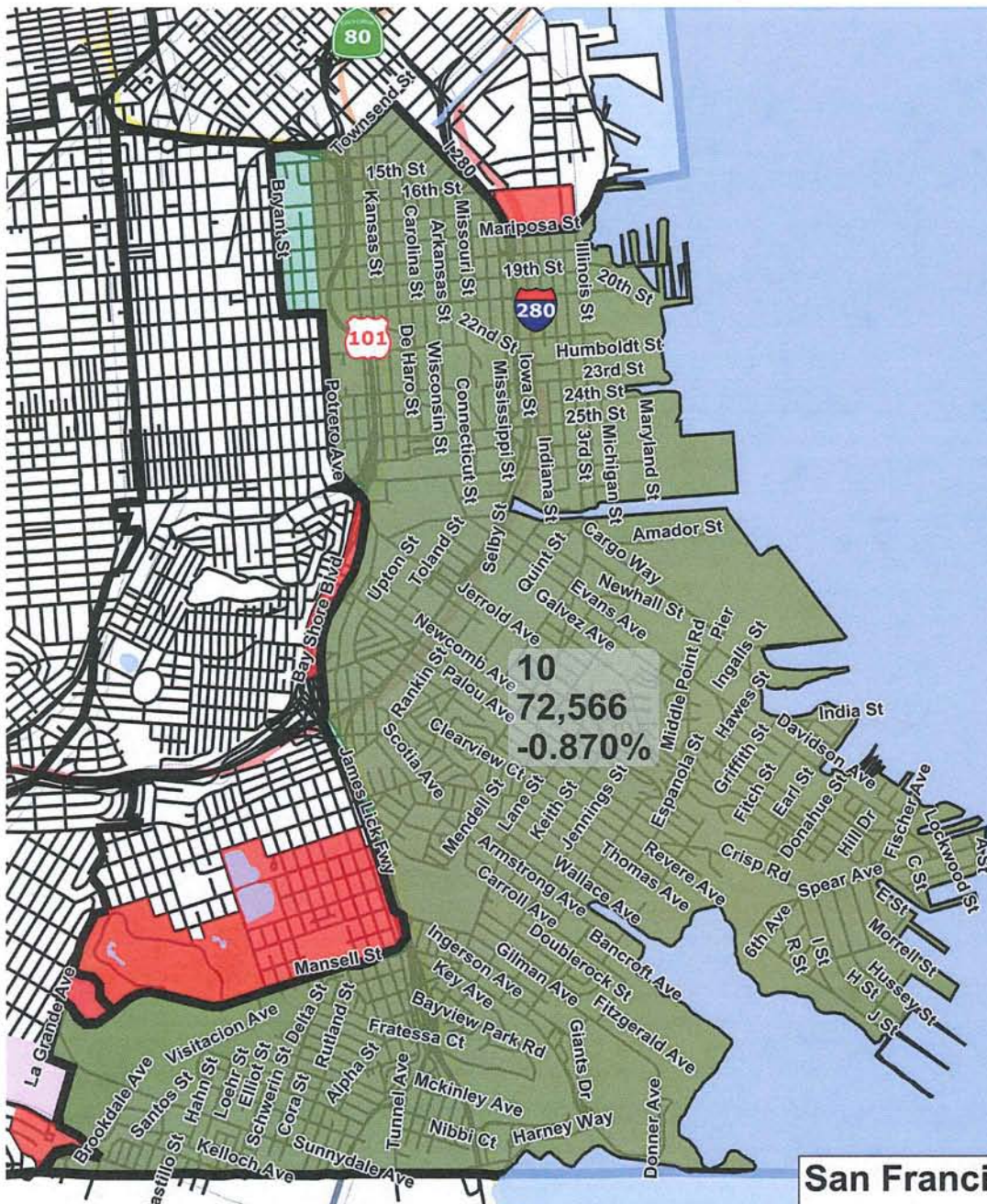
James D. Donaghy Ave

80

101

280

280



San Francisco Board of Supervisors Redistricting Task Force

- 2012 SF BOS District
- No Change
- 2002 SF BOS District

0.1.2.3



Miles

DISTRICT
POPULATION
%DEVIATION

San Francisco 2012 Board of Supervisors Districts Total Population and Deviation from Ideal - U.S. Census Bureau PL94 Table 2. DOJ Tabulation

District	Population	Deviation	%Deviation	Latino	%Latino	White	%White	Black	%Black	American Indian	%American Indian	Asian	%Asian	Hawaiian or Pacific Islander	%Hawaiian or Pacific Islander	Other	%Other
1	69,703	-3,500	-4.78%	4756	6.82%	30,152	43.26%	1,455	2.09%	285	0.41%	32,091	46.04%	134	0.19%	315	0.45%
2	69,544	-3,659	-5.00%	3932	5.65%	52,539	75.55%	1,254	1.80%	250	0.36%	10,812	15.55%	141	0.20%	259	0.37%
3	70,394	-2,809	-3.84%	4819	6.85%	29,735	42.24%	1,872	2.66%	284	0.40%	32,900	46.74%	122	0.17%	208	0.30%
4	72,498	-705	-0.96%	4224	5.83%	23,521	32.44%	1,024	1.41%	228	0.31%	42,731	58.94%	142	0.20%	224	0.31%
5	74,600	1,397	1.91%	7191	9.64%	42,676	57.21%	8,206	11.00%	464	0.62%	14,730	19.75%	191	0.26%	356	0.48%
6	73,909	706	0.96%	11961	16.18%	28,606	38.70%	7,699	10.42%	708	0.96%	23,425	31.69%	301	0.41%	332	0.45%
7	72,737	-466	-0.64%	7390	10.16%	34,097	46.88%	2,724	3.75%	291	0.40%	27,112	37.27%	194	0.27%	334	0.46%
8	75,746	2,543	3.47%	10789	14.24%	50,009	66.02%	2,466	3.26%	470	0.62%	11,003	14.53%	179	0.24%	348	0.46%
9	76,720	3,517	4.80%	29381	38.30%	23,704	30.90%	3,184	4.15%	407	0.53%	18,929	24.67%	292	0.38%	268	0.35%
10	72,566	-637	-0.87%	15668	21.59%	12,299	16.95%	15,711	21.65%	252	0.35%	25,714	35.44%	1,625	2.24%	181	0.25%
11	76,818	3,615	4.94%	21663	28.20%	10,113	13.16%	4,315	5.62%	195	0.25%	39,446	51.35%	281	0.37%	235	0.31%

San Francisco 2012 Board of Supervisors Districts Total Voting Age Population - U.S. Census Bureau PL94 Table 4. DOJ Tabulation

District	Total VAP	%VAP*	Latino VAP	%Latino VAP	White VAP	%White VAP	Black VAP	%Black VAP	American Indian VAP	%American Indian VAP	Asian VAP	%Asian VAP	Hawaiian or Pacific Islander VAP	%Hawaiian or Pacific Islander VAP	Other VAP	%Other VAP
1	60,465	86.75%	4,014	6.64%	26,759	44.26%	1,243	2.06%	247	0.41%	27,438	45.38%	123	0.20%	234	0.39%
2	62,009	89.17%	3,417	5.51%	47,195	76.11%	1,114	1.80%	228	0.37%	9,465	15.26%	127	0.20%	182	0.29%
3	64,982	92.31%	4,291	6.60%	28,799	44.32%	1,702	2.62%	280	0.43%	29,213	44.96%	107	0.16%	182	0.28%
4	61,448	84.76%	3,457	5.63%	20,900	34.01%	834	1.36%	194	0.32%	35,484	57.75%	122	0.20%	162	0.26%
5	67,774	90.85%	6,124	9.04%	39,921	58.90%	6,849	10.11%	425	0.63%	13,374	19.73%	165	0.24%	299	0.44%
6	67,943	91.93%	10,029	14.76%	27,535	40.53%	7,145	10.52%	678	1.00%	21,238	31.26%	265	0.39%	292	0.43%
7	61,566	84.64%	6,047	9.82%	29,798	48.40%	2,315	3.76%	251	0.41%	22,335	36.28%	150	0.24%	221	0.36%
8	67,468	89.07%	9,067	13.44%	45,602	67.59%	2,046	3.03%	432	0.64%	9,483	14.06%	155	0.23%	284	0.42%
9	64,362	83.89%	23,251	36.13%	21,583	33.53%	2,624	4.08%	366	0.57%	15,703	24.40%	233	0.36%	195	0.30%
10	56,915	78.43%	11,068	19.45%	11,248	19.76%	11,694	20.55%	208	0.37%	20,896	36.71%	1,019	1.79%	127	0.22%
11	62,779	81.72%	16,708	26.61%	9,165	14.60%	3,694	5.88%	175	0.28%	32,260	51.39%	222	0.35%	164	0.26%

*Denominator is total population

*** PRESS RELEASE ***

2/12/2012

FOR IMMEDIATE RELEASE

Contacts: Marily Mondejar, 415.935.4396

Kay Gulbengay, 415.554.7710

rddf@sfgov.org

www.sfgov.org/rddf

SAN FRANCISCO REDISTRICTING TASK FORCE ANNOUNCES DEADLINE TO SUBMIT CITY-WIDE MAPS

Community Meetings Scheduled for February, March and April To Maximize Public Participation

San Francisco, CA – February 10, 2012 – The San Francisco Redistricting Task Force has announced **March 2, 2012** as the deadline to submit proposed citywide maps and **March 29, 2012** for supervisorial district maps. The Task Force may not consider proposals after these dates.

Proposed maps have to meet established legal requirements and may be submitted via email at rddf@sfgov.org, in person at the Redistricting Task Force, Room 244, City Hall, 1 Dr. Carlton B. Goodlett Place, San Francisco, CA 94102 or online at <http://www.redrawsf.org> using the redistricting application.

The Redistricting Task Force must present a final plan outlining the new supervisorial district lines to the Board of Supervisors no later than **April 15, 2012**.

The San Francisco Redistricting Task Force has been holding meetings in each of the supervisorial districts to maximize public participation in the redistricting process. Audio recordings of the meetings are available at <http://sfgov.org/rddf>.

The Task Force urges the people of San Francisco to attend the community meetings, provide public input and submit proposed district maps and recommendations for their respective communities. Language interpreters are available at each meeting.

The following community meetings are scheduled for February, March and April 2012.

February Schedule:

Friday	Feb 17	Regular Meeting	3pm	Room 416, City Hall
Thursday	Feb 23	Special Meeting	6pm	District 3 Old First Presbyterian Church – 1751 Sacramento Street

March Schedule:

Thursday	Mar 1	Special Meeting	6pm	District 8 Everett Middle School – 450 Church Street
Wednesday	Mar 7	Regular Meeting	6pm	Room 406, City Hall
Monday	Mar 12	Special Meeting	6pm	District 7 West Portal School – 5 Lenox Way
Saturday	Mar 17	Special Meeting	10am	District 5 Ella Hill Hutch Community Center – 1050 McAllister Street
Thursday	Mar 22	Special Meeting	6pm	District 4 United Irish Cultural Center – 2700-45th Avenue
Thursday	Mar 29	Special Meeting	6pm	Room TBD, City Hall

April Schedule:

Wednesday	Apr 4	Regular Meeting	6pm	Room 406, City Hall
Thursday	Apr 5	Special Meeting	6pm	Location TBD
Monday	Apr 9	Special Meeting	6pm	Location TBD
Wednesday	Apr 11	Special Meeting	6pm	Room TBD, City Hall
Saturday	Apr 14	Special Meeting	6pm	Room TBD, City Hall

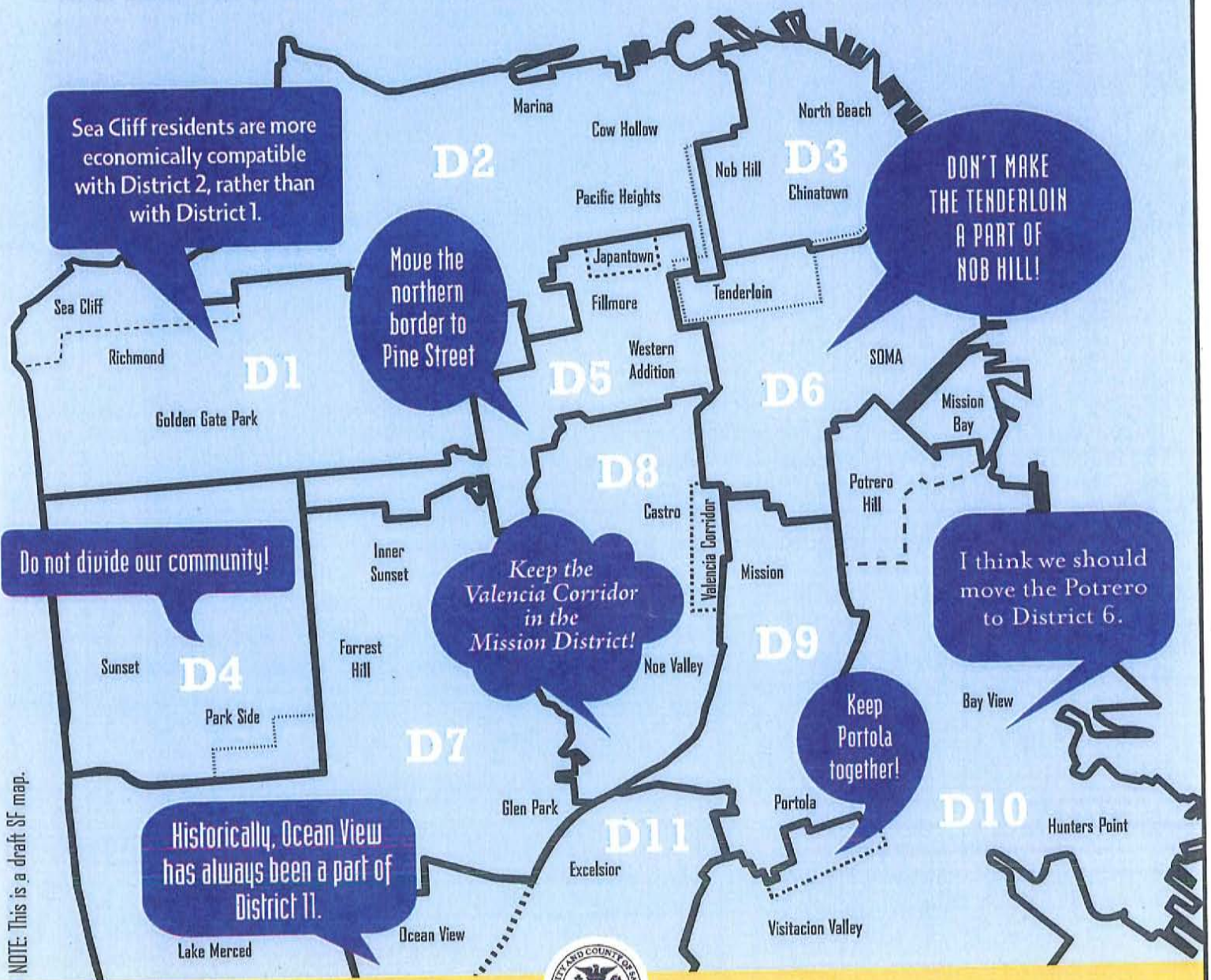
Information meeting changes and updates on the TBD locations will be available at sfgov.org/rddf.

Who is the San Francisco Redistricting Task Force? The San Francisco Redistricting Task Force is charged with redistricting the boundaries for the Board of Supervisors. The Mayor (M), the Board of Supervisors (BOS) and the Elections Commission (EC) each appointed three members. The nine members are:

- Chair: Eric McDonnell (BoS)
- Vice-Chair: Jenny Lam (BoS)
- Mike Alonso (BoS)
- Myong Leigh (M)
- Sonia Melara (M)
- Marily Mondejar (M)
- David Pil
- Mark Schreiber (EC)
- Melissa Tidwell (EC)

More info: www.sfgov.org/rddf

Your Voices Can Move Boundaries.



NOTE: This is a draft SF map.



SPEAK OUT SAN FRANCISCO!

Attend community meetings, provide public input and submit proposed district maps and recommendations for your communities of interest. Language interpreters are available at each meeting. The San Francisco Redistricting Task Force will redraw the boundaries for San Francisco's 11 supervisorial districts, laying the groundwork for the City's political future for the next decade.

WHAT IS REDISTRICTING?

It is the constitutionally mandated redrawing of local, state, and federal political boundaries every 10 years following the U.S. Census. Redistricting is done to equalize the populations in the districts, using various legal criteria. San Francisco's population added 28,502 residents, a 3.7% increase, from the 2000 Census count of 776,733 people.

ATTEND THE COMMUNITY MEETINGS:

Saturday, March 17, 10am (District 5)
Ella Hill Hutch Community Center
1050 McAllister St.

Thursday, March 22, 6pm (District 4)
United Irish Cultural Center
2700 45th Ave.

Thursday, March 29, 6pm
City Hall, Room 400

Wednesday, April 4, 6pm
Thursday, April 5, 6pm
Monday, April 9, 6pm
Wednesday, April 11, 6pm
City Hall, Room 406

Saturday, April 14, 10am
Check website or call for meeting location

SUBMIT PROPOSED DISTRICT MAPS BEFORE THURSDAY, MARCH 29, 5PM:

SF Redistricting Task Force
City Hall, Room 244, San Francisco
Email at rddf@sfgov.org
Online at www.redrawsf.org

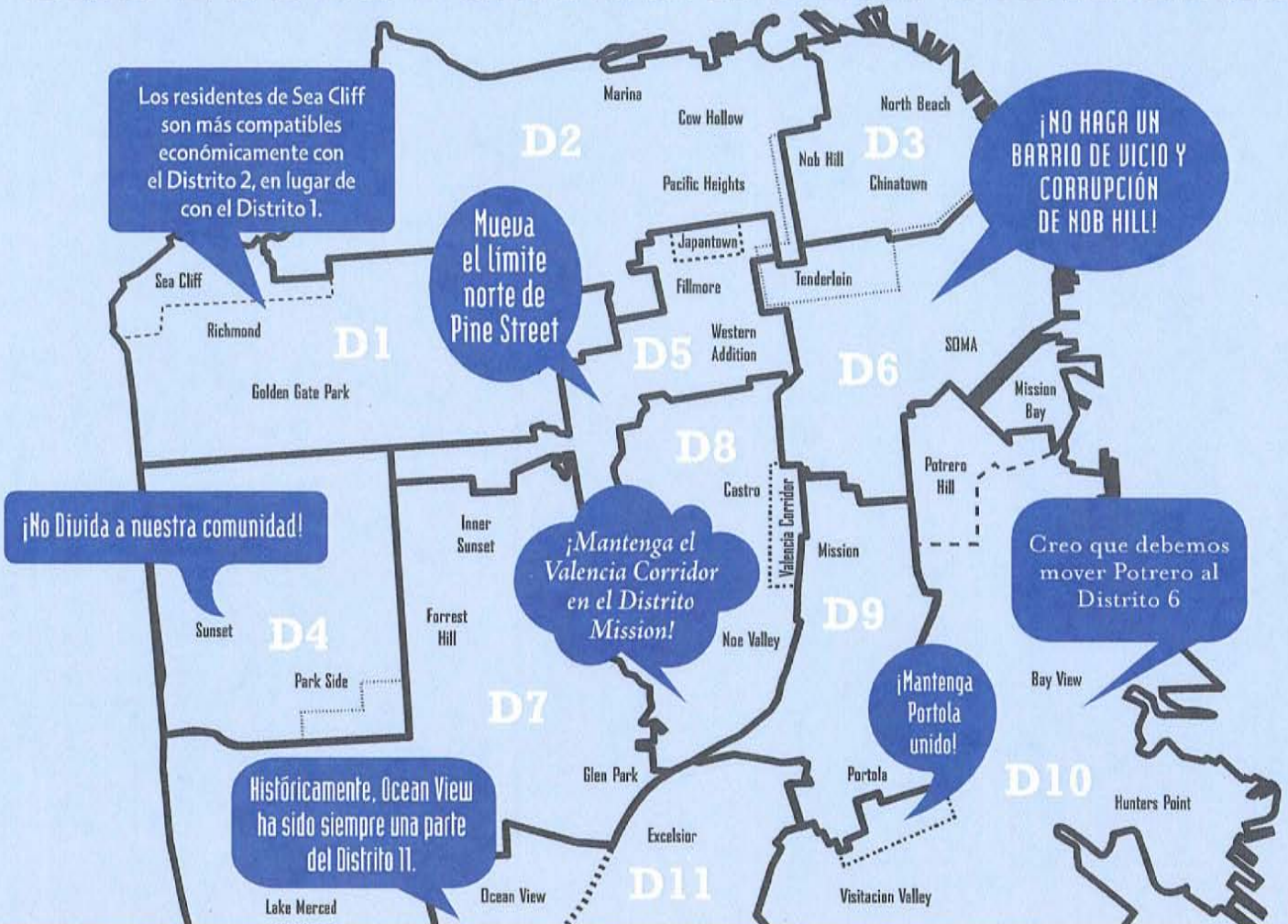
More info and for meeting locations:
www.sfgov.org/rddf
415. 554. 7710



Follow us @redistrictingsf



Sus Voces Pueden Mover Fronteras.



NOTE: This is a draft SF map.

¡LEVANTA LA VOZ, SAN FRANCISCO!

Asistir a las reuniones comunitarias, proporcionar información pública y presentar propuestas de mapas de distrito y recomendaciones para sus comunidades de interés. Intérpretes de idiomas están disponibles en cada reunión. El Grupo de Trabajo de Distribución de distritos de San Francisco redefinirá los límites de 11 distritos de supervisión de San Francisco, sentando las bases para el futuro político de la Ciudad para la próxima década.

¿QUÉ ES LA REDISTRIBUCIÓN DE DISTRITOS?

Es el mandato constitucional de redistribución de los límites políticos locales, estatales y federales cada 10

años después del censo de los EE.UU. La Redistribución de Distritos se hace para igualar las poblaciones de los distritos utilizando diversos criterios legales. La población de San Francisco agregó 28,502 residentes, un aumento del 3.7%, desde el conteo del Censo 2000, de 776,733 personas.

ASISTA A LAS REUNIONES COMUNITARIAS:

Sábado 17 de marzo, 10 am (Distrito 5)
Centro Comunitario Ella Hill Hutch
1050 McAllister St.

Jueves 22 de marzo, 6pm (Distrito 4)
Centro Cultural United Irish
2700 45th Ave.

Jueves 29 de marzo, 6pm
Ayuntamiento, Sala 400

Miércoles 4 de abril, 6pm

Jueves 5 de abril, 6pm

Lunes 9 de abril, 6pm

Miércoles 11 de abril, 6pm

Ayuntamiento, Sala 406

Sábado 14 de abril, 10am

Consulte el sitio en línea o llame para ubicación de la reunión

Para más información y ubicación de las reuniones:
www.sfgov.org/rdtf 415.554.7710

PRESENTAR PROPUESTAS DE MAPAS DE DISTRITO ANTES DEL JUEVES 29 DE MARZO, 5:00PM:

SF Redistricting Task Force
Ayuntamiento, Sala 244, San Francisco
Correo electrónico a rdtf@sfgov.org
En línea en www.redrawsf.org



Follow us @redistrictingsf



Buenos padres



HEALTHY KIDS  No importa su estado migratorio

Seguro médico a bajo costo o gratuito

- Médico Personal • Cuidado dental • Cuidado de la vista
- Recetas Medicas
- Línea de asesoría de enfermeras disponible las 24 horas al día
- Prestando servicio a la juventud latina desde el año 2001

 **SAN FRANCISCO HEALTH PLAN**
Here for you

Llame **(888) 201-6374**
www.sfhp.org

Demasiado Tóxico para Botarlo



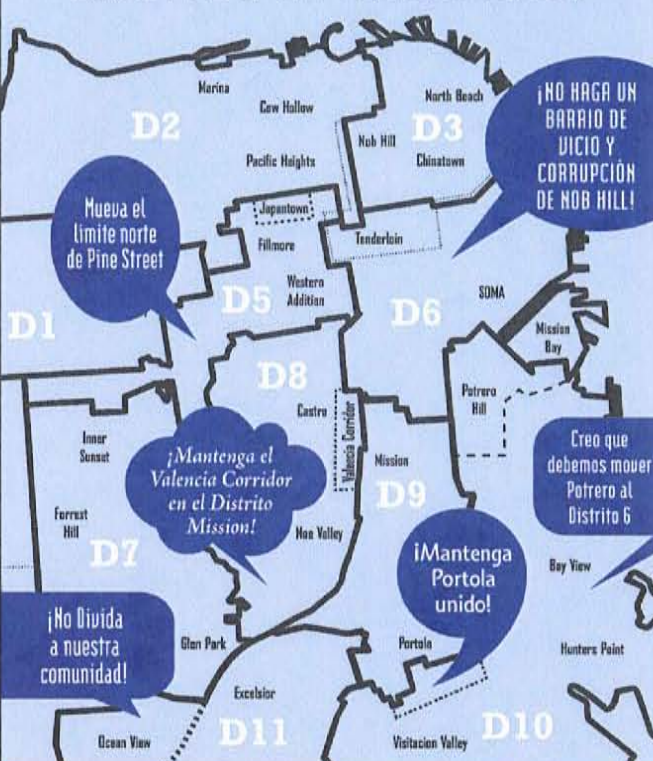
Recicle su aceite de motor y filtros.

Llame al **1-800-CLEANUP** o visite www.flowstobay.org/usedoil para encontrar una lista donde reciclar su aceite y filtro usado.

Financiado por el Departamento para el Reciclaje y Recuperación de Recursos (también conocido como CalRecycle).

Sus Voces Pueden Mover Fronteras.



¡NO HAGA UN BARRIO DE VICIO Y CORRUPCIÓN DE NOB HILL!

Mueva el límite norte de Pine Street

¡Mantenga el Valencia Corridor en el Distrito Mission!

¡Mantenga Portola unido!

¡No Divida a nuestra comunidad!

Creo que debemos mover Potrero al Distrito 6

NOTA: Este es un proyecto de mapa SF.

¡LEVANTA LA VOZ, SAN FRANCISCO!
Asistir a las reuniones comunitarias, proporcionar información pública y presentar propuestas de mapas de distrito y recomendaciones para sus comunidades de interés. Intérpretes de idiomas están disponibles en cada reunión. El Grupo de Trabajo de Distribución de distritos de San Francisco redefinirá los límites de 11 distritos de supervisión de San Francisco, sentando las bases para el futuro político de la Ciudad para la próxima década.

ASISTA A LAS REUNIONES COMUNITARIAS:

Sábado 17 de marzo, 10am (Distrito 5)
Centro Comunitario Ella Hill Hutch
1050 McAllister Street

Jueves 22 de marzo, 6pm (Distrito 4)
Centro Cultural United Irish
2700 45th Ave.

Jueves 29 de marzo, 6pm
Ayuntamiento, Sala 400




Miércoles 4 de abril, 6pm
Jueves 5 de abril, 6pm
Lunes 9 de abril, 6pm
Miércoles 11 de abril, 6pm
Ayuntamiento, Sala 406

Sábado 14 de abril, 6pm
Consulte el sitio en línea o llame para ubicación de la reunión

PRESENTAR PROPUESTAS DE MAPAS DE DISTRITO ANTES DEL JUEVES 29 DE MARZO, 5:00PM:
SF Redistricting Task Force
Ayuntamiento, Sala 244, San Francisco
Correo electrónico a rdtf@sfgov.org
En línea en www.redrawsf.org

¿QUÉ ES LA REDISTRIBUCIÓN DE DISTRITOS?
Es el mandato constitucional de redistribución de los límites políticos locales, estatales y federales cada 10 años después del censo de los EE.UU. La Redistribución de Distritos se hace para igualar las poblaciones de los distritos utilizando diversos criterios legales. La población de San Francisco agregó 28,502 residentes, un aumento del 3.7%, desde el censo del Censo 2000, de 776,733 personas.

Para más información y ubicación de las reuniones:
www.sfgov.org/rdtf
415. 554. 7710
Siga nos @redistrictingsf

Sports

SUMO

First-ever African wrestler makes sumo debut

OSAKA (Kyodo) — Sumo's first-ever wrestler of African descent marked his debut with a resounding victory at the Spring Grand Sumo Tournament on March 13.

Egyptian Abdelrahman Ahmed Shaalan made his long-awaited appearance on the third day of the Osaka meet as an unofficially ranked wrestler, becoming the first from his homeland to grace the *dohyo*.

The 20-year-old Shaalan, whose ring name is Osunaarashi, or "Great Sandstorm," defeated 18-year-old Yuya Fukuzato at Osaka Prefectural Gymnasium. "I was really excited," said Shaalan, who belongs to the Otake stable. "Today — the day that I stood in the *dohyo* — marks

the birthday of my career as a *sumo* wrestler."

Shaalan, who is blessed with a rippling physique, charged hard out of the crouch before scooping up his opponent for a powerful beltless arm throw.

"He is still too high out of the crouch, but I want to congratulate him on his victory in his debut match," stablemaster Otake said.

Shaalan first tried his hand at *sumo* at the age of 15 and rapidly developed, winning a bronze medal at the 2008 world junior *sumo* championships.

He joined the Otake stable in October last year and passed the



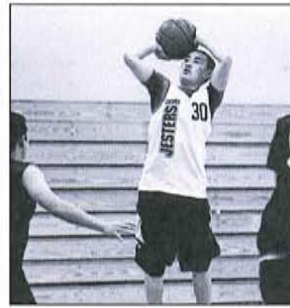
DEBUT — Egyptian Osunaarashi, *sumo*'s first-ever wrestler of African descent, performs a pre-bout ritual as an unofficially ranked wrestler at the Spring Grand Sumo Tournament on March 13.

Kyodo News photo

physical to become a wrestler at the New Year meet in January.

Although Shaalan's Japanese ability is still a long way off, there is one phrase he has no problem articulating: "My dream is to become a (*yokozuna*) grand champion."

BASKETBALL



SURELY YOU JEST — (Left) Court Jesters Red's Andrew Fong finds some space for an open jumper. (Right) Gilman Chan of the Sacramento Sabres rises for an easy basket against the Court Jesters White.

photos by Darren Yamashita

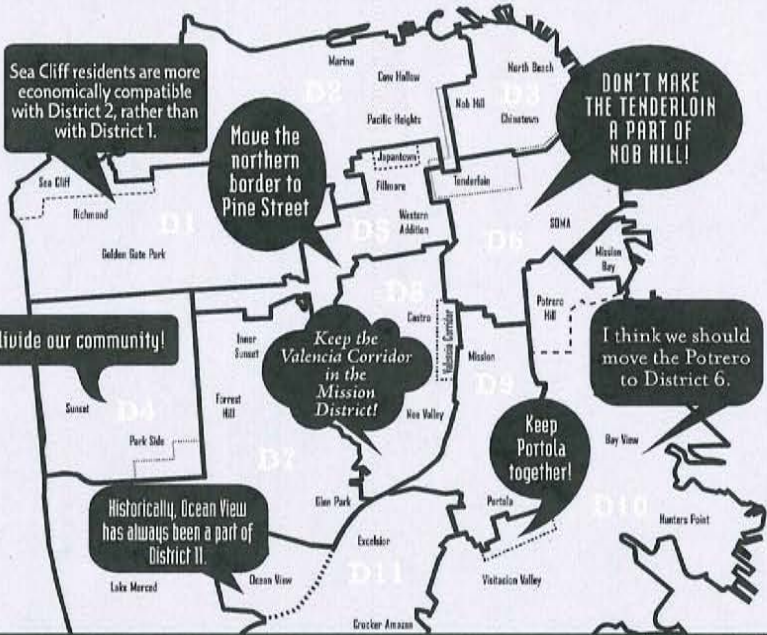
NorCal Nisei Athletic Union

Week 7, March 3-4:

Team	W	L
Aye Major		
NorCal Thunder	4	1
Shonenz	4	1
Sacramento Sabres	4	2
San Francisco Drakes - Black	3	2
Shinobi	3	2
Sacramento Samurai	2	3
East Bay Court Jesters - White	1	4
San Francisco Drakes - Blue	1	4
San Jose JACL	1	5
Aye Minor American		
San Mateo Ryusei	5	1
East Bay Court Jesters - Red	4	2
East Bay Court Jesters - Orange	2	3
San Francisco Drakes - Orange	0	6
Aye Minor National		
San Jose Jammers	6	0
Blue Dogs	4	2
East Bay Court Jesters - Blue	2	5
Stockton	1	5

Team	1	2	F
Aye Major			
Sacramento Sabres	37	46	83
East Bay Court Jesters - White	38	41	79
HIGH SCORERS			
Sabres: Chan - 30			
Jesters: Scott - 34			
Sacramento Samurai	24	38	62
San Jose JACL	26	26	52
HIGH SCORERS			
Samurai: Kwong - 26			
JACL: Kong - 12			
San Francisco Drakes - Black	37	35	72
San Francisco Drakes - Blue	41	28	69
HIGH SCORERS			
Drakes Black: Hom - 35			
Drakes Blue: Wong - 21			
Shonenz	41	44	85
Shinobi	37	34	71
HIGH SCORERS			
Shonenz: Tanaka - 35			
Shinobi: Nakano - 23			
Aye Minor			
East Bay Court Jesters - Orange	27	3	30
Blue Dogs	41	10	51
HIGH SCORERS			
Jesters Orange:			
J. Tanisawa - 10			
Blue Dogs:			
Douglass, Jr., Thrower - 8			
Stockton	39	29	68
East Bay Court Jesters - Red	42	31	73
HIGH SCORERS			
Stockton: Hui - 30			
Jesters Red: Momono - 24			
San Francisco Drakes - Orange	26	30	56
San Jose Jammers	35	32	67
HIGH SCORERS			
Drakes: Chang - 15			
Jammers: Der - 26			
San Mateo Ryusei	24	39	63
East Bay Court Jesters - Blue	39	15	54
HIGH SCORERS			
Ryusei: Suruki - 25			
Jesters Blue: Wong - 16			

Your Voices Can Move Boundaries.



NOTE: This is a draft SF map.

SPEAK OUT SAN FRANCISCO!

Attend community meetings, provide public input and submit proposed district maps and recommendations for your communities of interest. Language interpreters are available at each meeting. The San Francisco Redistricting Task Force will redraw the boundaries for San Francisco's 11 supervisorial districts, laying the groundwork for the City's political future for the next decade.

WHAT IS REDISTRICTING?

It is the constitutionally mandated redrawing of local, state, and federal political boundaries every 10 years following the U.S. Census. Redistricting is done to equalize the populations in the districts, using various legal criteria. San Francisco's population added 28,502 residents, a 3.7% increase, from the 2000 Census count of 776,733 people.

ATTEND THE COMMUNITY MEETINGS:

Saturday, March 17, 10am (District 5)
Ella Hill Hutch Community Center
1050 McAllister St.

Thursday, March 22, 6pm (District 4)
United Irish Cultural Center
2700 45th Ave.

Thursday, March 29, 6pm
City Hall, Room 400

Wednesday, April 4, 6pm
Thursday, April 5, 6pm
Monday, April 9, 6pm
Wednesday, April 11, 6pm
City Hall, Room 406

Saturday, April 14, 10am
Check website or call for meeting location

SUBMIT PROPOSED DISTRICT MAPS BEFORE THURSDAY, MARCH 29, 5PM:

SF Redistricting Task Force
City Hall, Rm 244, San Francisco
Email at rdtf@sfgov.org
Online at www.redrawsf.org

More info and for meeting locations:
www.sfgov.org/rdtf
415. 554. 7710

Follow us @redistrictingsf



Sports

BOWLING

JANBA 2012 tournament notables include S.F. Bay Area bowlers

The Japanese American National Bowling Association (JANBA) held its annual tournament in Colorado. The tournament was held from March 4 to 10 at the Westminster Zone Brunswick in Westminster, Colo.

Robert Hiraoka won the men's singles event with scores of 300-278-290 for a total of 868 points, which is a new record for JANBA, according to Gil Takahashi, of the Nikkei Invitational Trios.

It was also Tamlyn Murata's time to shine as she and her father, Ron Murata, came in first for the mixed doubles. Tamlyn Murata bowled 238-235-258 and Ron Murata bowled 233-210-233 for a grand total of 1,407, three points more than second place winners Kristy Coles and Gary Okumura. Tamlyn Murata was also part of the winning women's team tournament with her partner Tracy Kitaoka in MJO Services, with the total team score of 3,260.

Nikkei Invitational Trios

Serra Bowl in Daly City, Tuesdays

Results as of March 13:

Current Standings	W	L
Ball 4 (4)	9	3
Ladies First (3)	8	4
Serra Bowl (10)	8	4
49'ers (5)	8	4
Striker's (14)	7	5
Powered By Natto (8)	7	5
Bel Mateo Bowl (1)	7	5
Strike It Rich (6)	5	7
Shu In (2)	5	7
Rolling Along (9)	5	7
Hailey's Comet (12)	5	7
Giants (13)	6	6
Strike Force (7)	2	10
The Prospectors (11)	2	10

Week's High Series: Men

Garrett Quon (Team 6)	277, 235, 214 (726)
Scott Higa (Team 12)	189, 234, 246 (669)
Dale Akagaki (Team 14)	189, 211, 227 (627)

Week's High Game: Men

Garrett Quon (Team 6)	277
Scott Higa (Team 12)	246
Paul Rozman (Team 11)	244
Alex Chin (Team 13)	244

Week's High Series: Women

Hisako Takemoto (Team 5)	235, 157, 225 (617)
Judy Higa (Team 10)	174, 137, 185 (496)
Sue Shimosaka (Team 3)	155, 159, 182 (496)

Week's High Game: Women

Hisako Takemoto (Team 5)	235
Judy Higa (Team 10)	185
Sue Shimosaka (Team 3)	182

TO PLACE YOUR LEAGUE'S SCORES
e-mail: sports@nichibeweekly.org

BASKETBALL

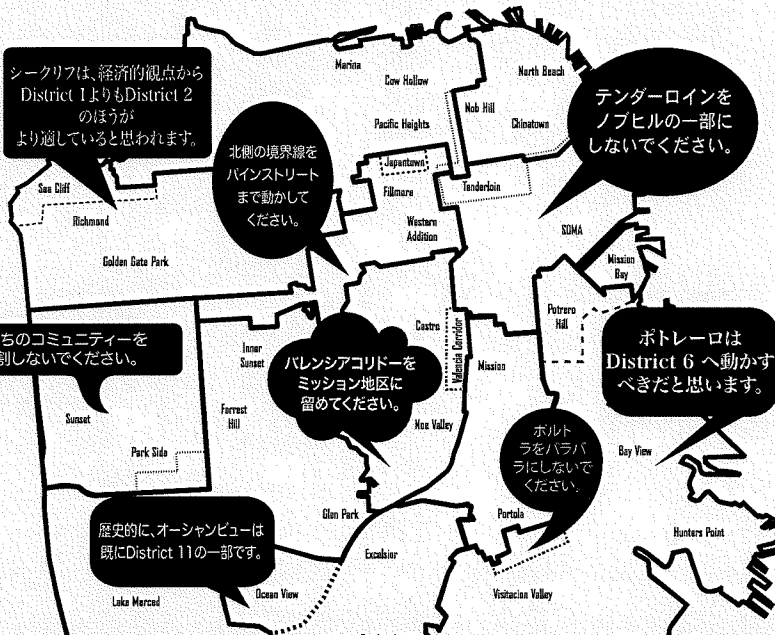
NorCal Nisei Athletic Union

Week 8, March 10-11:

Team	W	L
Aye Major		
Shonenz	5	1
NorCal Thunder	5	1
San Francisco Drakes - Black	4	2
Sacramento Sabres	4	3
Shinobi	3	3
Sacramento Samurai	3	3
San Jose JACL	2	5
East Bay Court Jesters - White	1	5
San Francisco Drakes - Blue	1	5
Aye Minor American		
East Bay Court Jesters - Red	6	2
San Mateo Ryusei	6	2
East Bay Court Jesters - Orange	3	4
San Francisco Drakes - Orange	0	8
Aye Minor National		
San Jose Jammers	7	0
Blue Dogs	4	3
East Bay Court Jesters - Blue	3	5
Stockton	1	6

Team	1	2	F
Aye Major			
Shonenz	51	32	83
Court Jesters White	31	50	81
HIGH SCORERS			
Shonenz: Tanamachi - 19			
Jesters: Scott - 30			
Shinobi	36	47	83
SJ JACL	38	47	85
HIGH SCORERS			
Shinobi: Kihara - 22			
JACL: Pang - 27			
SF Drakes Blue	30	35	65
NorCal Thunder	29	52	81
HIGH SCORERS			
Drakes Blue: Bullard - 16			
Thunder: Tong - 28			
Sac Sabres	24	37	61
SF Drakes Black	37	48	85
HIGH SCORERS			
Sabres: Chan - 19			
Drakes Black: Sugawara - 22			
Aye Minor			
Court Jesters Orange	33	27	60
SF Drakes Orange	19	33	52
HIGH SCORERS			
Jesters Orange: D. Hom, J. Tanisawa - 16			
Drakes Orange: Ono - 25			
SM Ryusei	45	33	78
Court Jesters Red	36	46	82
HIGH SCORERS			
Ryusei: Suruki - 25			
Jesters Red: Narasaki - 22			
Stockton	20	25	45
SJ Jammers	30	28	58
HIGH SCORERS			
Stockton: Hui - 16			
Jammers: Lai - 22			
Blue Dogs	20	23	43
Court Jesters Blue	30	31	61
HIGH SCORERS			
Blue Dogs: Douglass, Jr. - 21			
Jesters Blue: Jew - 17			

あなたの声でサンフランシスコの境界線を動かそう!



NOTE: This is a draft SF map.

あなたのサンフランシスコを描こう

コミュニティミーティングに参加して、あなたのコミュニティが推薦する地域図案や、自由な意見をお聞かせください。各ミーティングにおいて選取をご利用頂けます。サンフランシスコ地区再編成計画によって、サンフランシスコにある11の地区を区切る境界線が新しく引き直される予定です。これにより、今後10年間のサンフランシスコにおける将来の政治基盤が作り上げられることとなります。

行政区分再編成とは?

10年に一度、国勢調査を基に、州や地区の行政区分を再編成することが法律によって義務付けられています。この行政区分再編成は、地域による人口の偏りを無くすることを目的としております。国勢調査によると、サンフランシスコの人口は2000年の776,733人から28,502人も増えております。

ぜひ下記のコミュニティミーティングに出席してください

- Saturday, March 17, 10am** (District 5)
Ella Hill Hutch Community Center
1050 McAllister St.
- Thursday, March 22, 6pm** (District 4)
United Irish Cultural Center
2700 45th Ave.
- Thursday, March 29, 6pm**
City Hall, Room 400
- Wednesday, April 4, 6pm**
- Thursday, April 5, 6pm**
- Monday, April 9, 6pm**
- Wednesday, April 11, 6pm**
City Hall, Room 406
- Saturday, April 14, 10am**
Check website or call for meeting location

地域図案を3月29日(木)午後5時までに提出してください。

SF Redistricting Task Force
City Hall, Rm 244, San Francisco
Email at rdtf@sfgov.org
Online at www.redrawsf.org

さらに詳しい情報はウェブサイトでもご確認できます。

www.sfgov.org/rdtf
415. 554. 7710

Follow us @redistrictingsf



CONGEN DE LEON VISITS NETWORK OFFICES

Diplomat hails TFC role to reconnect Filipinos

QUEZON CITY – Philippine Consul General in the United States Northeast Mario de Leon Jr. lauded the leading media conglomerate's efforts to reach out to Filipinos abroad and reconnect them globally and to the homeland. In his recent visit to the ABS-CBN Corporation offices, he professed that like any other Filipino who decides to leave home to work overseas, he too, is an Overseas Filipino who longs for home.

In a lunch meeting with ABS-CBN Corporation chair and CEO Eugenio Lopez III, president Charo Santos-Concio, corporate communications division vice president Boag Osorio, news and current affairs head Ging Reyes and special projects head Chat Guerrero, de Leon revealed in an exclusive interview that like "kababayan" abroad, he and his family are detached not just physically but culturally as well. Hence, he supports ABS-CBN's outreach to Filipinos around the world to promote Filipino presence and visibility; celebrate their identity and heritage; acknowledge their excellence; and help build their communities wherever they may be.

Prior to assuming his post as Philippine consul general in the states of Connecticut, Delaware, Maine, Massachusetts, New Hampshire, New Jersey, New York, Pennsylvania, Rhode Island, and Vermont de Leon served as Philippine Ambassador Extraordinary and Plenipotentiary to South Africa.

He has worked away from the Philippines as part of his foreign service since 1990.

The detachment and the need for reconnection of Filipinos in the foreign service is the rationale behind the Ambassadors, Consuls General, and Tourism Directors Tour which will take off in July and for which the Consul General is in the Philippines to promote. The purpose of the tour is to help the Filipinos in the foreign service "savor their own culture and reconnect with the Philippines," so they can effectively perform their duties. The program which was first initiated by Foreign Secretary Albert del Rosario, will be comprised by four nights of cultural shows and relevant meets and greets with government officials including His Excellency President Benigno Aquino III.

The tour, he says will have a huge impact in the economy as well since the exposure will 'sell' the Philippines to entrepreneur delegates who may choose to invest in the Philippines given its business opportunities; rich culture; and beautiful landscape.

In all these he said that TFC plays a huge role as it helps connect the distant Filipinos with their loved ones in the Philippines through the shows they commonly watch in the Philippines and elsewhere where there is TFC. This is also the reason why TFC will



The diplomat and the CEO were classmates at Ateneo.

be part of the ACGTD tour in July. During the ABS-CBN and TFC visit, the delegates will get the chance to participate live in the exciting noontime show "It's Showtime!"

De Leon got to personally witness how these shows are done when he visited the live impeachment coverage of both ABS-CBN News and Current Affairs newscast and the DZMM 630 radio booths plus the ASAP: Deal or No Deal; and KristiTV studios. Part of the highlight of his visit was the live acknowledgement by the 'It's Showtime' hosts led by Anne Curtis of the Consul General during the March 13 episode.

He expressed that his children, while already uprooted from the Philippines, still

appreciate shows like Showtime. He notes that the U.S. Philippine government actually feels the need to reach out to the second generation of Filipino Americans given their physical distance and lack of desire to reconnect to their roots.

This objective, according to de Leon, is what TFC and the consulate in New York have in common, among other efforts to promote the Filipino culture. He said that through programs whether news and entertainment or government-initiated, both TFC and the consulate can be partners in reaching out to this market and keeping them connected to home, not just individually but as a community.



De Leon said TFC soothes overseas workers' homesickness.

EMERALD TRAVEL & TOURS

1750 Collins Blvd., Ste. 112 Richardson, Texas 75080



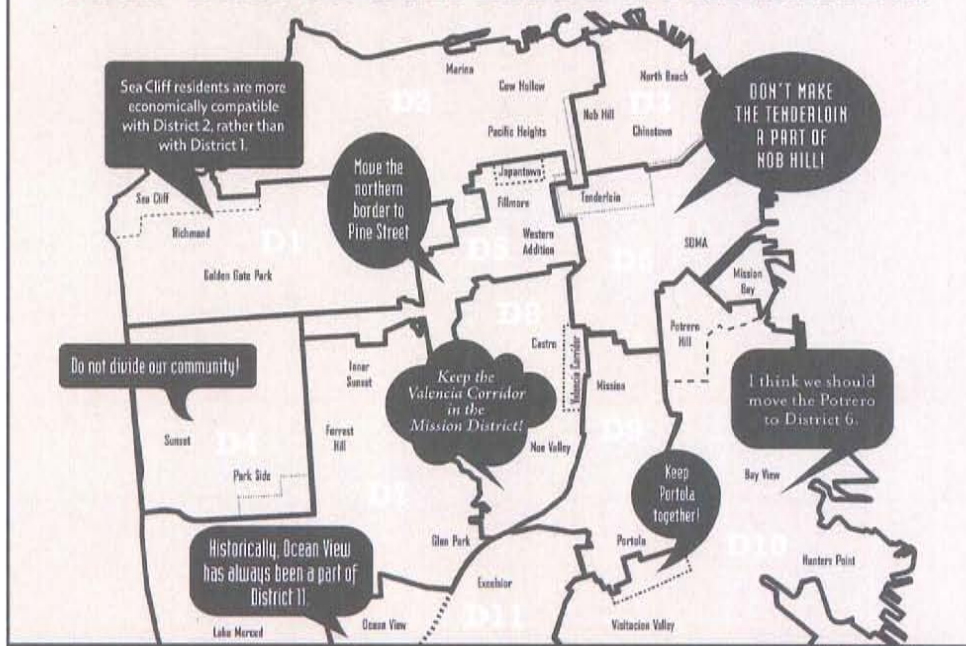
- Southeast Asia Travel Specialist
- Group rates to Manila and Cebu for May and December
- Low Hotel Rate and Tour Packages to Southeast Asia

Consolidator fare to Europe, Southeast Asia and South Pacific First Class and Business Class low fares available. Discounted Tour & Cruise Fares to China, Europe, South Pacific and around the world.

Want to be a Sub-Agent?

Call Us! (972) 437-4070 ; 1-800-336-2528

Your Voices Can Move Boundaries.



NOTE: This is a draft SF map.

SPEAK OUT SAN FRANCISCO!

Attend community meetings, provide public input and submit proposed district maps and recommendations for your communities of interest. Language interpreters are available at each meeting. The San Francisco Redistricting Task Force will redraw the boundaries for San Francisco's 11 supervisory districts, laying the groundwork for the City's political future for the next decade.

WHAT IS REDISTRICTING?

It is the constitutionally mandated redrawing of local, state, and federal political boundaries every 10 years following the U.S. Census. Redistricting is done to

equalize the populations in the districts, using various legal criteria. San Francisco's population added 28,502 residents, a 3.7% increase, from the 2000 Census count of 776,733 people.

ATTEND THE COMMUNITY MEETINGS:

Saturday, March 17, 10am (District 5)
Ella Hill Hatch Community Center
1050 McAllister St.

Thursday, March 22, 6pm (District 4)
United Irish Cultural Center
2700 45th Ave.

Thursday, March 29, 6pm
City Hall, Room 400

Wednesday, April 4, 6pm
Thursday, April 5, 6pm
Monday, April 9, 6pm
Wednesday, April 11, 6pm
City Hall, Room 406

Saturday, April 14, 10am
Check website or call for meeting location

For more info and for meeting locations:
www.sfgov.org/rdtf 415.554.7710

SUBMIT PROPOSED DISTRICT MAPS BEFORE THURSDAY, MARCH 29, 5PM:

SF Redistricting Task Force
City Hall, Rm 244, San Francisco
Email at rdtf@sfgov.org
Online at www.redrawsf.org

follow us @redistricting!



政僑界三姓宗誼近五百人暢聚聯歡 三益總公所45周年慶暨春宴

美西三益總公所於3月11日舉行慶祝成立45周年暨春節聯歡。當天下午，經文處處長江國強伉儷，文教中心主任呂元榮、助理黃道華親臨，與總公所首長職員齊聚，虔誠拜祭先賢，祈求新的一年風調雨順，會務興隆。



各界政要、僑領與三益總公所首長共同舉杯，共慶新年。

僑務委員長贈掛軸 祝願所務更上層樓

晚上六時，總公所觀禮堂皇后大禮堂舉行晚宴。加州眾議院執行議員周世濤代表謝漢傑頒發賀狀；經文處處長江國強伉儷、中華總會館總董暨華聯總會館主任張慶、華聯總會館主席周連昌、佛利堂社區中心主任黃惠善、文教中心主任呂元榮、助理黃道華、國民黨常委毛書南、伍佩蘭、書記長陳伯豪、分部常委于愛珍、何文銳、關向江鎮波、主席江照輝、黎美勤、何振強、主任江帶潤、顧問江潤恆及列位夫人，各界僑團首長、社會賢達近五百人出席。

中華總會館代總董伍佩蘭表示：江、黎、何三姓人才輩出，傳奇人物名揚海外。如主席黎美勤是傑出的才女兼教育家，世誼江國強總董等熱心幫困濟危，更有黎元洪大總統、何應欽抗日名將及江澤民國家最高領導均三姓宗誼對國家貢獻良多，祝願公所業務蒸蒸日上，更上一層樓。

趙家公所春宴滿堂吉慶

僑社記者葉坤玲報導
三藩市趙家公所春節聯歡會3月11日晚假新亞酒樓舉行，筵開35席。主席許勤、副主席盧正、譚長等出席，並由譚長主持了莊嚴肅穆的祀祖禮，繼續先賢之功德。祀祖禮後由書記紹棠主持，主席許勤及林氏主席致辭分別致詞，婦女部精彩歌舞表演。

會難得，希望大家開懷暢飲不醉不歸。經文處處長譚長盛讚趙家公所歷史悠久，在僑社中起著舉足輕重的作用，他並祝其是林氏宗親，今晚與林氏親戚及趙氏世表一同歡慶新春，尤感盛情。並稱讚趙家公所十分支持經文處的各项活動，讚揚承前啟後的熱心。席間，江國強並致送新春賀詞，副主席盧正吉祥賀詞。林氏主席致辭致謝，榮幸與趙氏世表同慶新春，世表熱情接待，有如回家參加喜慶之感。我們發揚林氏一家親的精神，世表親情水火相濟。他並讚揚趙家公所人材輩出，為社會貢獻良多。

張家、趙家四姓姓氏公所、橫水同鄉會、建福堂親友、大埠關光培堂、開平關光裕堂等團體首長及成員，還有國民黨中央黨部委員曾世長及趙川三宗長、林家公所婦女部精英、岡州總會館林柏壽及梁水添等世表及好友。



趙家公所首長向嘉賓、宗親、林氏世表敬酒。

你們的聲音能移動選區範疇。

Sea Cliff 居民在經濟上與第 2 選區更相似，而不是第 1 選區。

金門公園是社區的共同利益，應保持完整。

不要分裂我們的社區！

從歷史角度而言，Ocean View 一直是第 11 選區的一部分。

將北區的界線移至 Pine 街

將 Valencia Corridor 留在米慎區！

保持 Potrero 的完整！

我認為我們應該把 Potrero 移至第 6 選區。

請勿使 Tenderloin 成為 Nob Hill 一部分！

請勿切割 Polk 街，將部分段落移入第 2 選區。Polk 街中段與 Sea Cliff 毫無共通點。

Follow us @redistrictingf

三藩市全體居民，請踴躍發言！

參加社區會議：

- 星期三，4月4日，6pm
- 星期四，4月5日，6pm
- 星期五，4月9日，6pm
- 星期三，4月11日，6pm
- 星期六，4月14日，10am
- 星期四，3月29日，6pm

請於星期四，3月29日，5:00pm 前往交通總匯地點：

SF Redistricting Task Force
City Hall, Room 244, San Francisco
電話：rd4@sfgov.org
網址：www.redrawsf.org

更多會議地點，請上網 www.sfgov/rd4 或致電 416.554.7710 查詢

Police Shootings, Beatings In NY Fuel Activist Call For More Oversight

By Saeed Shabazz
Staff Writer
Special to the NNPA from the Final Call

The killing of an unarmed Bronx teen, Ramarley Graham, 19, by an undercover narcotics officer, the police beating of another 19-year-old Bronx teen, Jatick Reed, shown on video being kicked and punched by four New York City police officers; and the shooting of Kenneth Chamberlain Sr., 68, a retired Marine Corps veteran and correction officer in White Plains, NY renewed the call for oversight of police departments throughout the state.

"Yes, it is true that these acts have reignited the discussion amongst community leaders regarding law enforcement's use of force policies, training of officers, and investigations of complaints of questionable actions by officers," said Damon Jones, the Westchester County, N.Y. representative of 100 Blacks in Law Enforcement in America.

Mr. Jones told The Final Call the main problem facing anti-police brutality activists in the state is the failure of officials to admit a need for a critical review of law enforcement policies.

Case in point, a Poughkeepsie Journal study of the use of Tasers by 19 local police agencies found Blacks were hit by Tasers far more than Whites. The Journal's analysis and the 2011 study by the N.Y. Civil Liberties Union of eight New York police forces showed clearly a disproportionate

use of stun guns on people of color. The NYACLU study found stun guns were used against non-Whites 58 percent of the time.

Police officials maintained Blacks are not targeted, saying officers try to use the stun device only when necessary to make arrests, according to the Poughkeepsie Journal.

The Journal concluded the use of Tasers "echoes consistent and disturbing practices of over-policing in communities of color."

One of the main supporters of current police practices is a conservative think tank, the Manhattan Institute, which insists: "Serious crime is being deterred by the NYPD's relentless efforts to reassess the rule of law in high-crime neighborhoods."

"Time for the federal government to come in, historically when local municipal police departments could not discipline their officers, the feds would investigate and put in safe guards to protect innocent citizens," said Sen. Eric Adams, a Democrat who represents Brooklyn. He added that for some "strange" reason, probably 9-11 attacks on the city, the Justice Department hasn't taken on NYPD.

"They have turned their backs on the trauma police misbehavior is bringing to our communities, 9-11 is no excuse," he told The Final Call.

Ron Hampton, the Wash., D.C. representative of Blacks in Law Enforcement in America explained that the Justice Dept. has a special Litigations Branch that monitors police departments nationally. "The law creating this department



Rosemarie Melbourne, of the Bronx, holds a sign in protest of police brutality after the funeral services of Ramarley Graham, 18, who was shot in his home by a police officer who mistakenly thought he had a gun, Feb. 18, in the Bronx borough of New York. Civil rights activist Al Sharpton spoke during the service and pledged that Mr. Graham will not be forgotten and called the Feb. 2 killing unjust. Photo: AP Wide World Photos/John Minchillo

was passed in 1992, known as the 'Omnibus Crime Act' of 1992 that established a system for monitoring departments, particularly if there has been notification of a culture of police brutality," Mr. Hampton said. The monitor may stay with a department for up to five years, looking at the behavior of the officers, he noted. You cannot have 20 questionable shootings and think there is no problem, it's referred to as "pattern and practice," Mr. Hampton continued.

"We have met with people from the DOJ several times, and New York comes up in our discussion, so, I know the DOJ is aware of what is happening

with the NYPD," he said.

The Justice Dept. has successfully monitored police departments in Seattle, Miami, Pittsburgh, Phoenix and New Orleans and changes were made, according to Mr. Hampton. "The DOJ responds to information from citizens," Mr. Hampton said.

The Justice Dept. did not respond to calls from The Final Call, nor has any statement been issued concerning these latest incidents in New York.

In the meantime, several state legislators sponsored a bill Feb. 9 that establishes an independent inspector general for the NYPD to report to the commissioner of investigations. New York mayor Mi-

chael Bloomberg opposes the bill, according to the Associated Press. A spokesman for the three-term mayor told AP: "The department already has an aggressive and independent Internal Affairs Bureau." "We agree the police department cannot police itself. For many years we have called for greater oversight of the NYPD, this is a step in the right direction," Hazel Duker, president of the New York State Conference of the NAACP, noted in a press release.

In an attempt to quiet the community, the NYPD announced Feb. 14 a so-called revised policy for using deadly force, according to the N.Y. Daily News. A department spokesman told the newspaper officers cannot shoot "if innocent bystanders" would be injured.

Some activists see this revised regulation as a smoke-screen and not an answer. The N.Y. Civil Liberties Union issued a statement saying the NYPD should be working on "improving training and procedures as to eliminate unjustified shootings."

The new directive is designed to restate that police shootings are not judged by the standard applied to civilians, noted Prof. Eugene O'Donnell, professor of political science and law at John Jay College of Criminal Justice. "Because the police use force pursuant to the work they do, and so do our best, their actions are judged in the context of their training and experience as police personnel," the professor told The Final Call in an e-mail.

The reasonableness of their actions can only be judged by taking into account what they know and how they are trained in assessing a given situation, added Prof. O'Donnell, who is also a retired police officer.

"The police act unilaterally and summarily—they, and they alone, make the on-the-spot decision, so there is no formal charging process or the participation of any non-police people in examining the decision," he said.

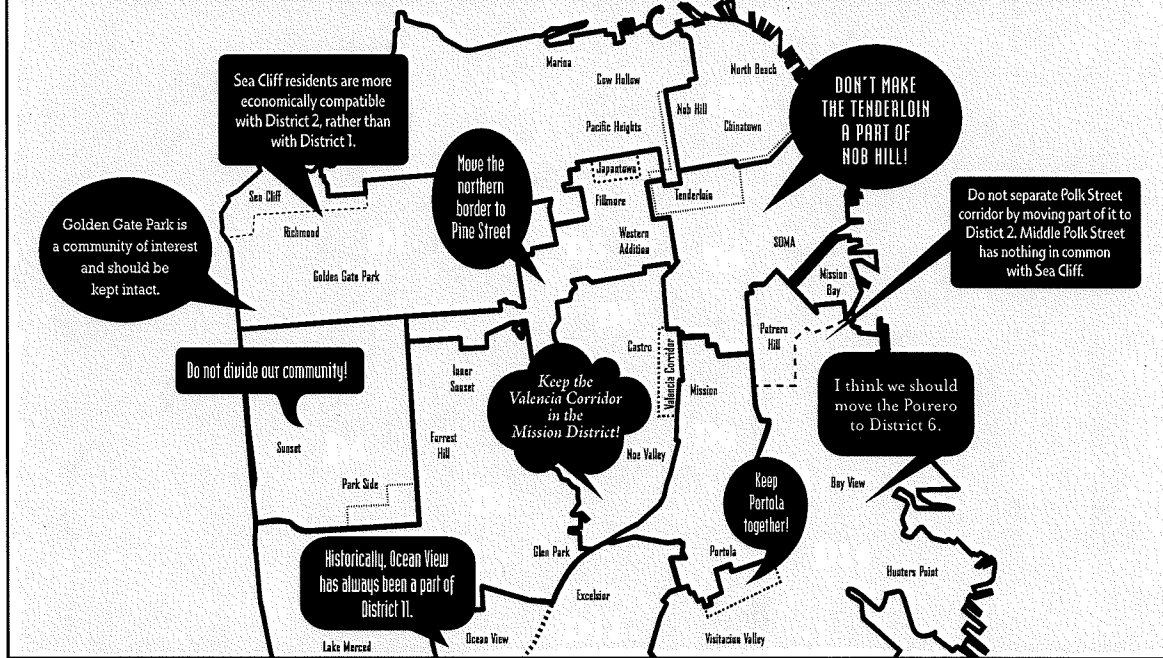
Sen. Adams, who retired from the NYPD with the rank of captain, said he understands the mindset described by Prof. O'Donnell. Officers must be given a psychological test that deals with racial stereotyping and that this test should be administered before coming into the NYPD, he said. "And there should be a lesson plan used in the Police Academy dealing with stereotyping," Sen. Adams added.

Columbia Law professor Jeffrey Fagan explained to The Final Call it is not "unconstitutional" for a police officer to put his hands on someone in the course of making a stop.

"Cops can legally handcuff someone, for example, if they believe that person has a weapon," he said. "It would be interesting to know the racial breakdown of those stops that don't end up in use of force."

New Yorkers must remain vigilant, and must keep up the pressure, the Justice Dept. will come around, said Mr. Hampton. "We will be meeting with the DOJ soon to discuss what is happening in Westchester County, and I am sure the NYPD will be discussed," he said.

Your Voices Can Move Boundaries.



NOTE: This is a draft SF map.

SPEAK OUT SAN FRANCISCO!

Attend community meetings, provide public input and submit proposed district maps and recommendations for your communities of interest. Language interpreters are available at each meeting. The San Francisco Redistricting Task Force will redraw the boundaries for San Francisco's 11 supervisorial districts, laying the groundwork for the City's political future for the next decade.

WHAT IS REDISTRICTING?

It is the constitutionally mandated redrawing of local, state, and federal political boundaries every 10 years following the U.S. Census. Redistricting is done to equalize the populations in the

districts, using various legal criteria. San Francisco's population added 28,502 residents, a 3.7% increase, from the 2000 Census count of 776,733 people.

ATTEND THE COMMUNITY MEETINGS:

Saturday, March 17, 10am (District 5)
Ella Hill Hulch Community Center
1050 McAllister St.

Thursday, March 22, 6pm (District 4)
United Irish Cultural Center
2700 45th Ave.

Thursday, March 29, 6pm
City Hall, Room 400

Wednesday, April 4, 6pm
Thursday, April 5, 6pm
Monday, April 9, 6pm
Wednesday, April 11, 6pm
City Hall, Room 406

Saturday, April 14, 10am
Check website or call for meeting location

For more info and for meeting locations:
www.sfgov.org/rdtf 415.554.7710

SUBMIT PROPOSED DISTRICT MAPS

BEFORE THURSDAY, MARCH 29, 5PM:
SF Redistricting Task Force, City Hall, Rm 244, San Francisco
Email at rdtf@sfgov.org
Online at www.redrawsf.org

Follow us @redistrictingf

