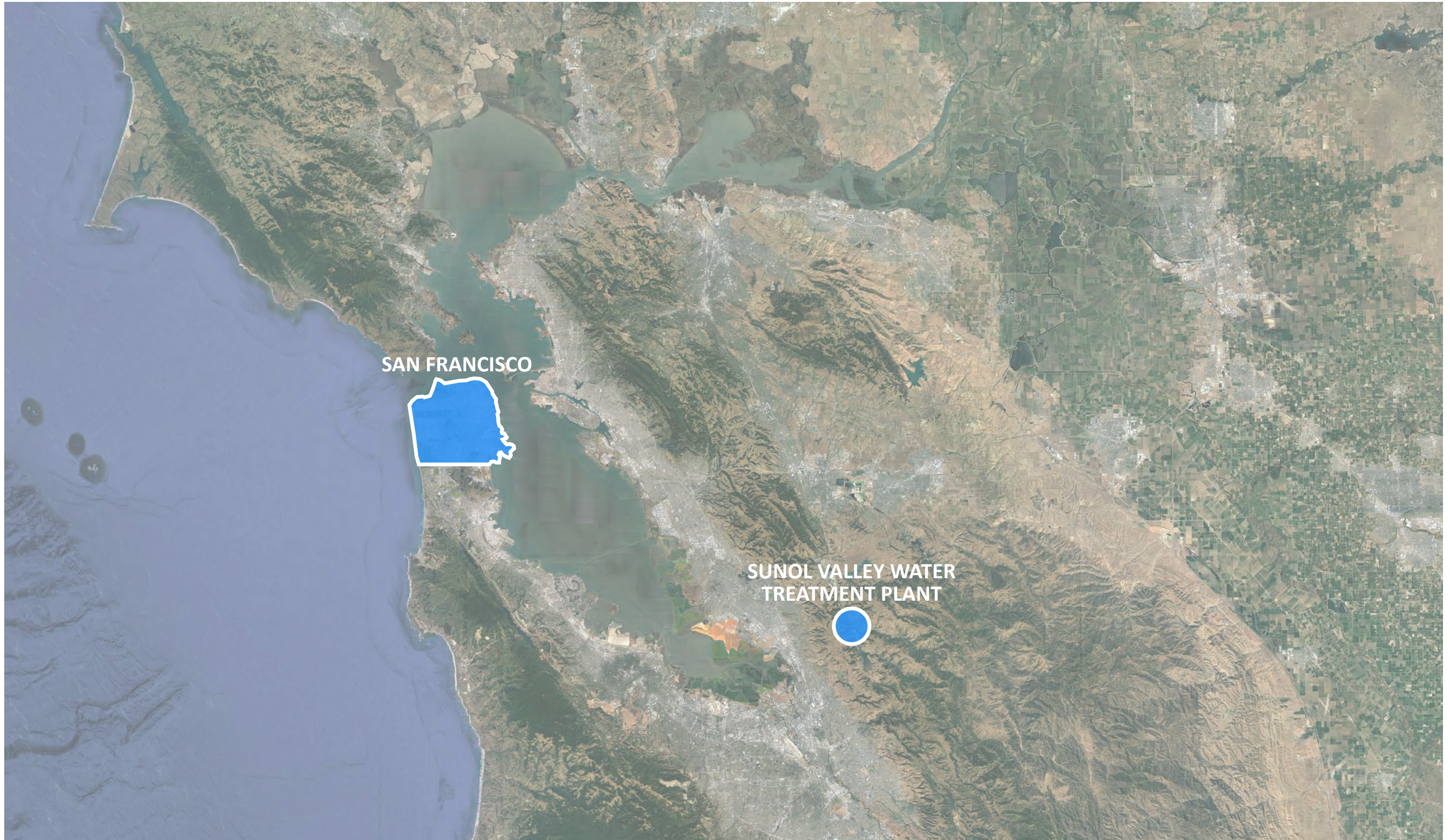




SAN FRANCISCO PUBLIC UTILITIES COMMISSION  
**SUNOL VALLEY WATER TREATMENT PLANT - OZONATION PROJECT**  
CIVIC DESIGN REVIEW | PHASE I | 05.16.2022

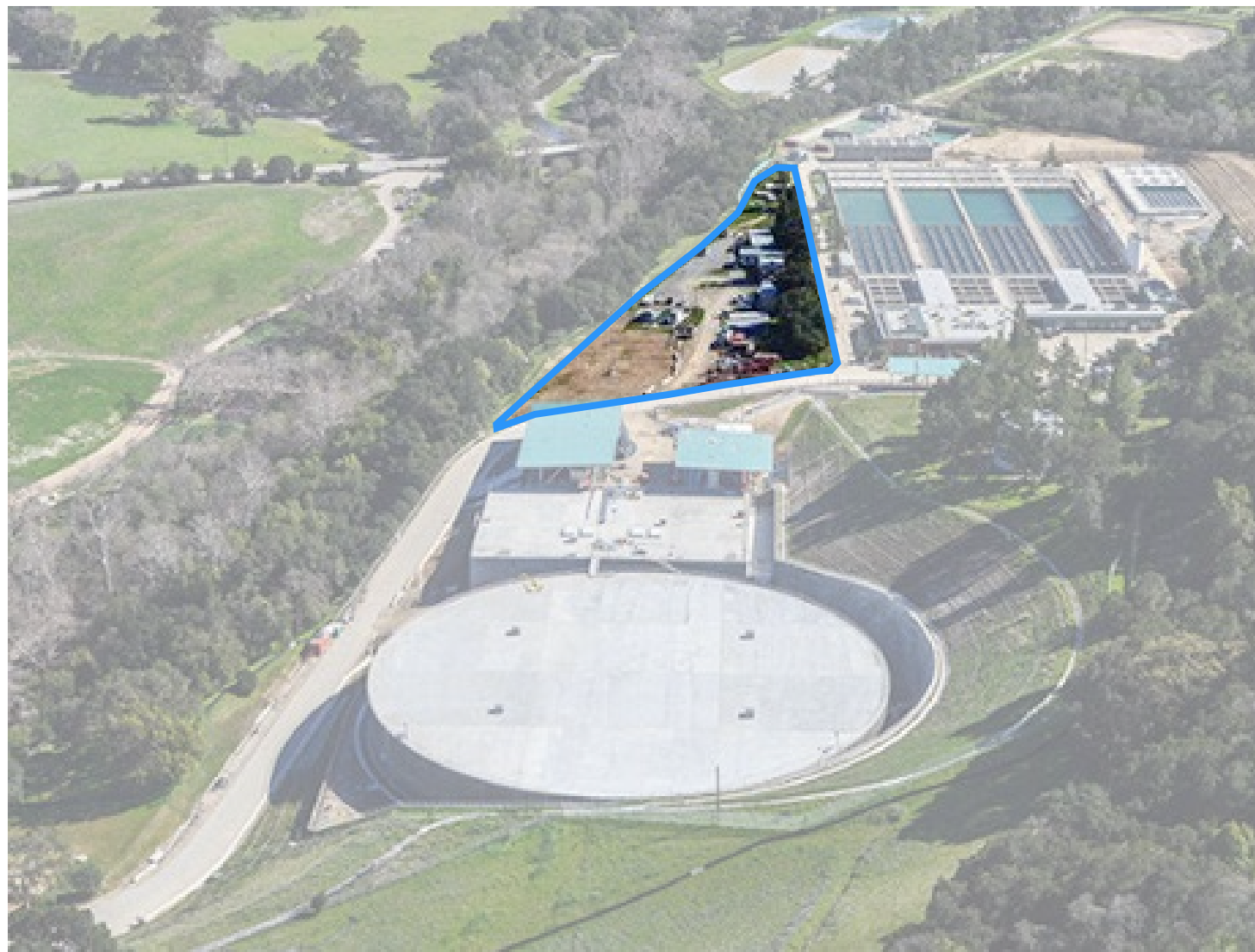


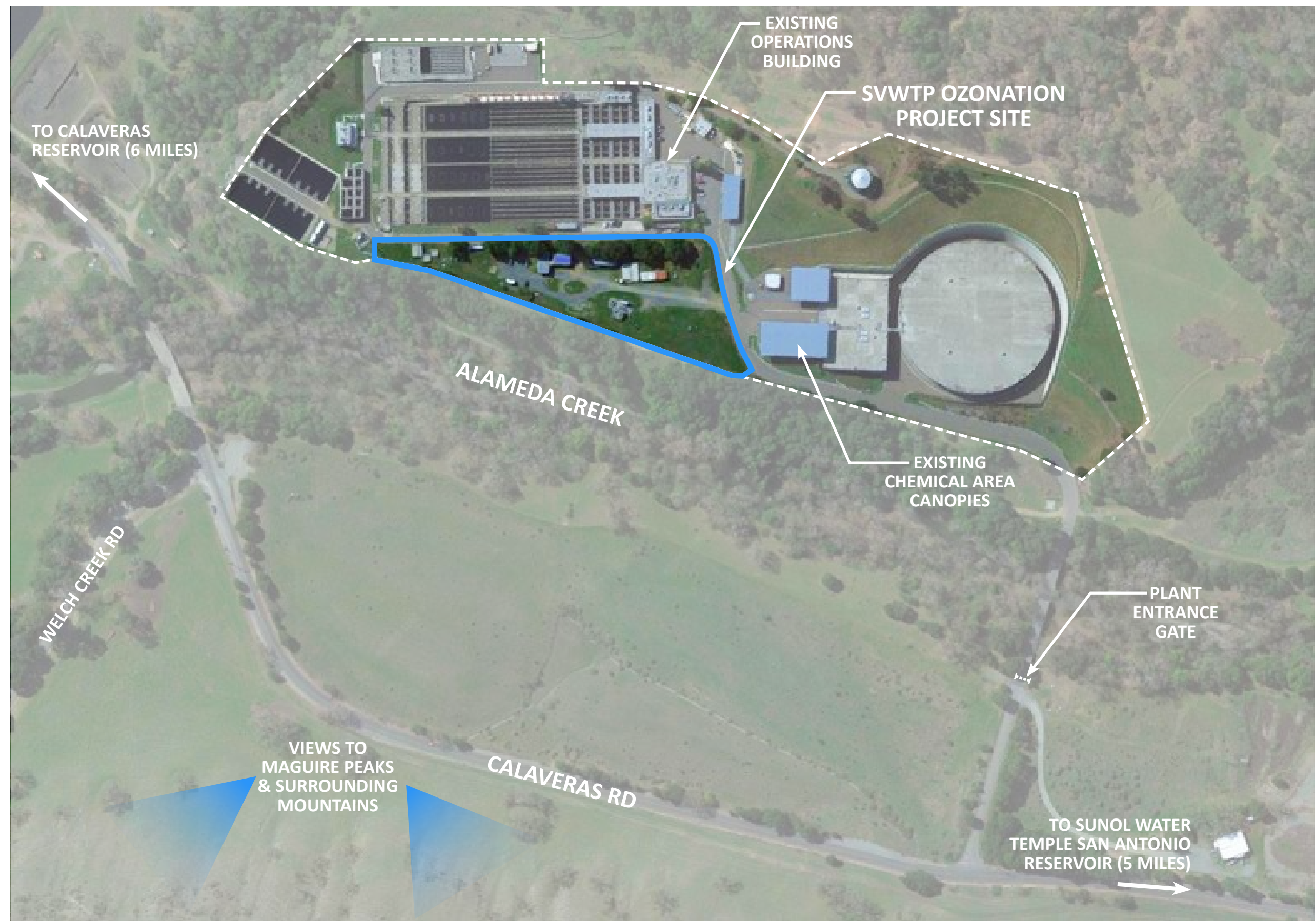




## PROJECT & SITE OVERVIEW

- Existing water treatment plant located in Sunol, CA
- This project will add an ozone system to remove tastes & odors from water
- Ozone system will include several new facilities

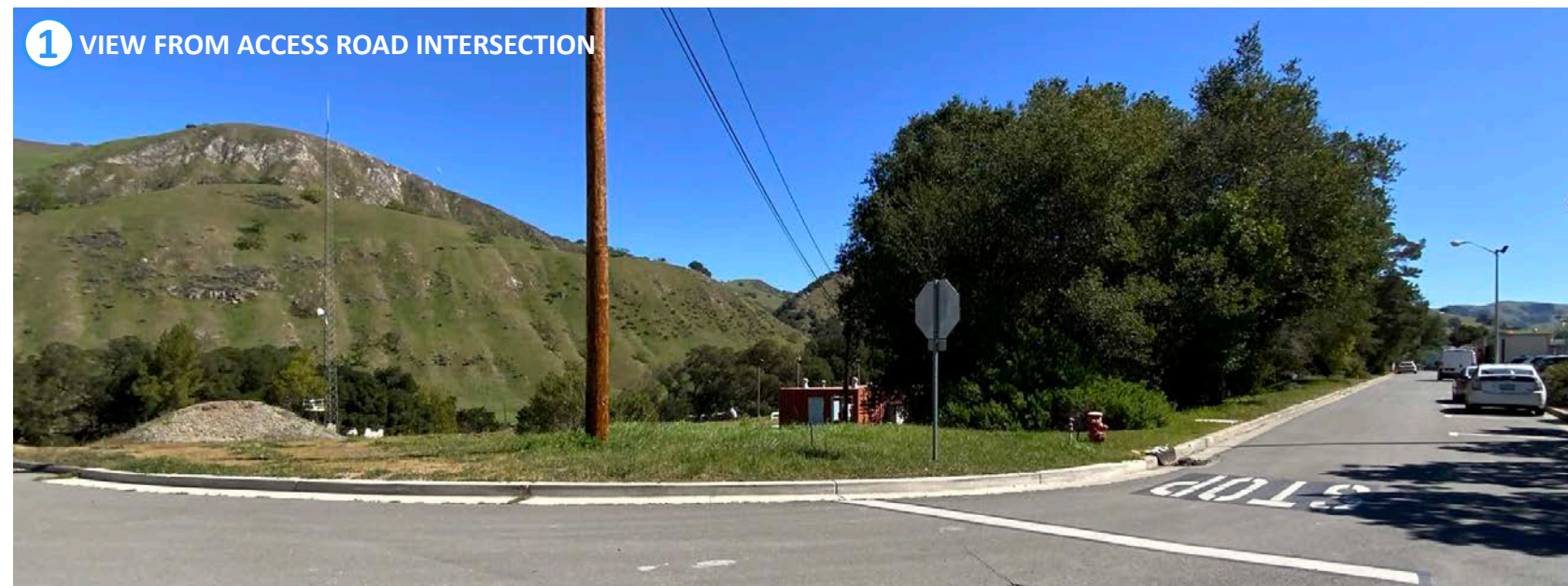
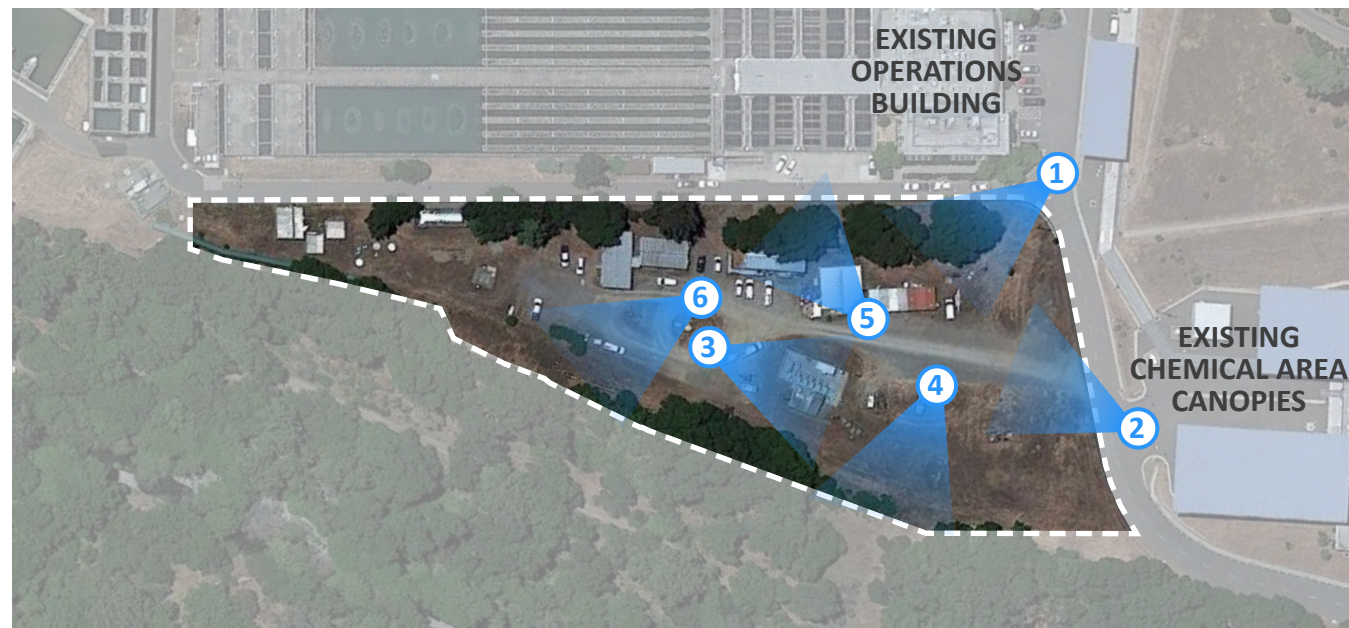












**1** VIEW FROM ACCESS ROAD INTERSECTION



**2** VIEW FROM PROPOSED VEHICULAR ENTRY/EXIT



**3** VIEW TOWARD [E] PH & ALKALINITY ADJUSTMENT FACILITY



**4** VIEW TOWARD MAGUIRE PEAKS



**5** [E] OVERFLOW CONTAINMENT BASIN



**6** VIEW TOWARD SURROUNDING MOUNTAINS

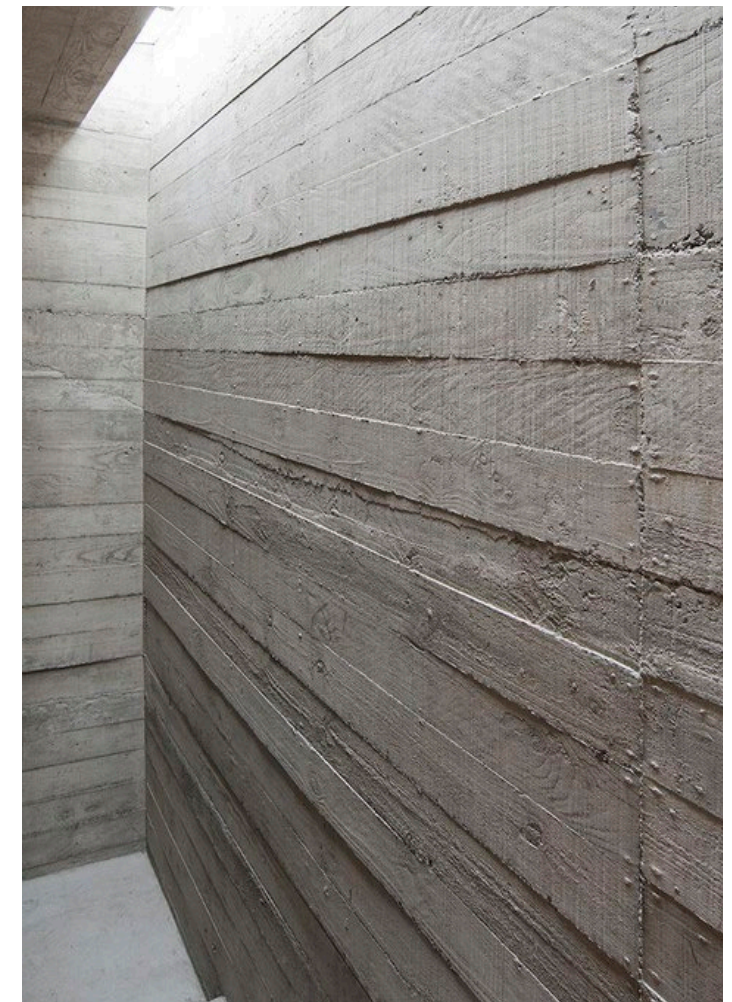
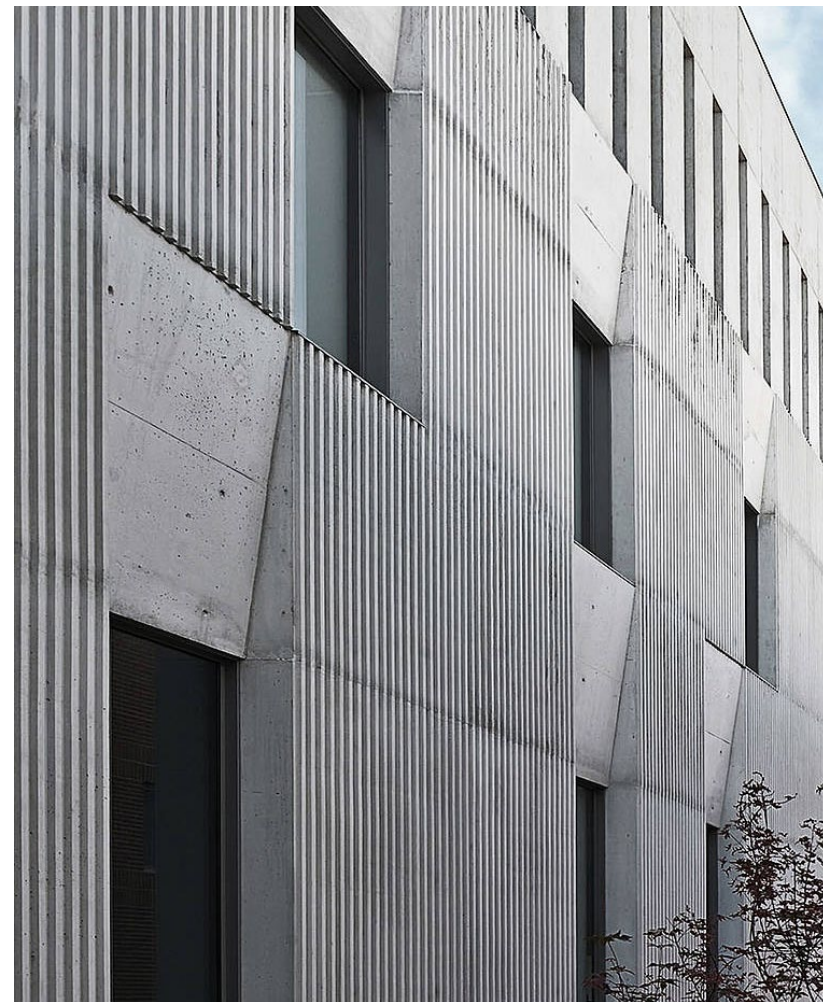
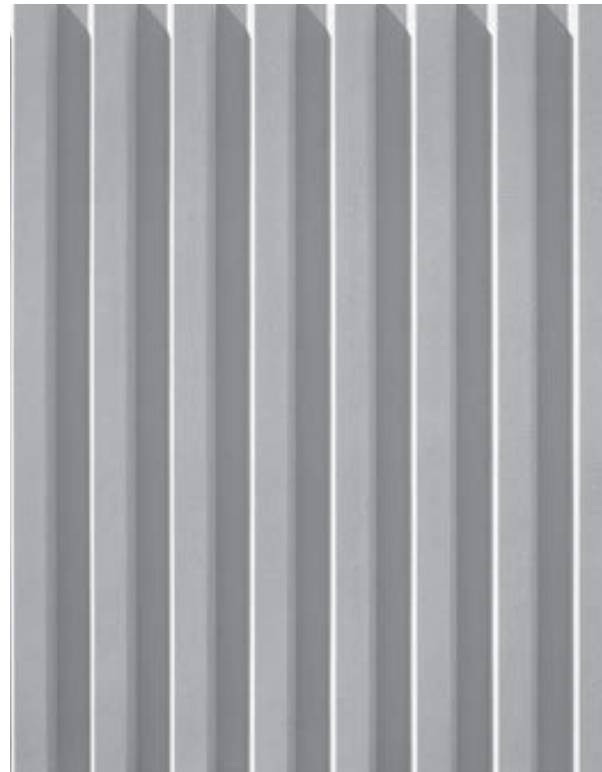


## COMMENTS FROM PHASE 0

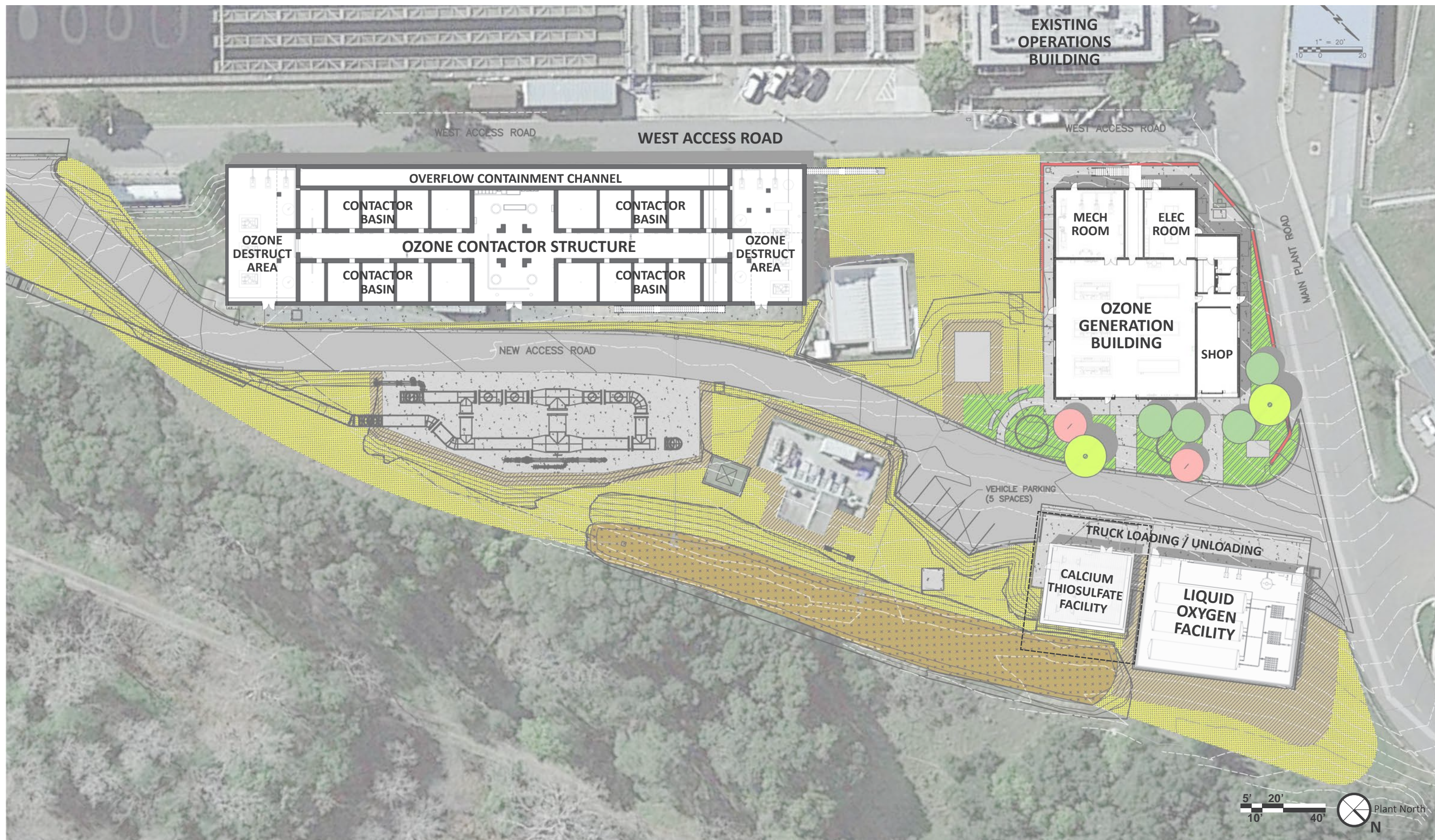
- Consideration of fire retardant and native plants.



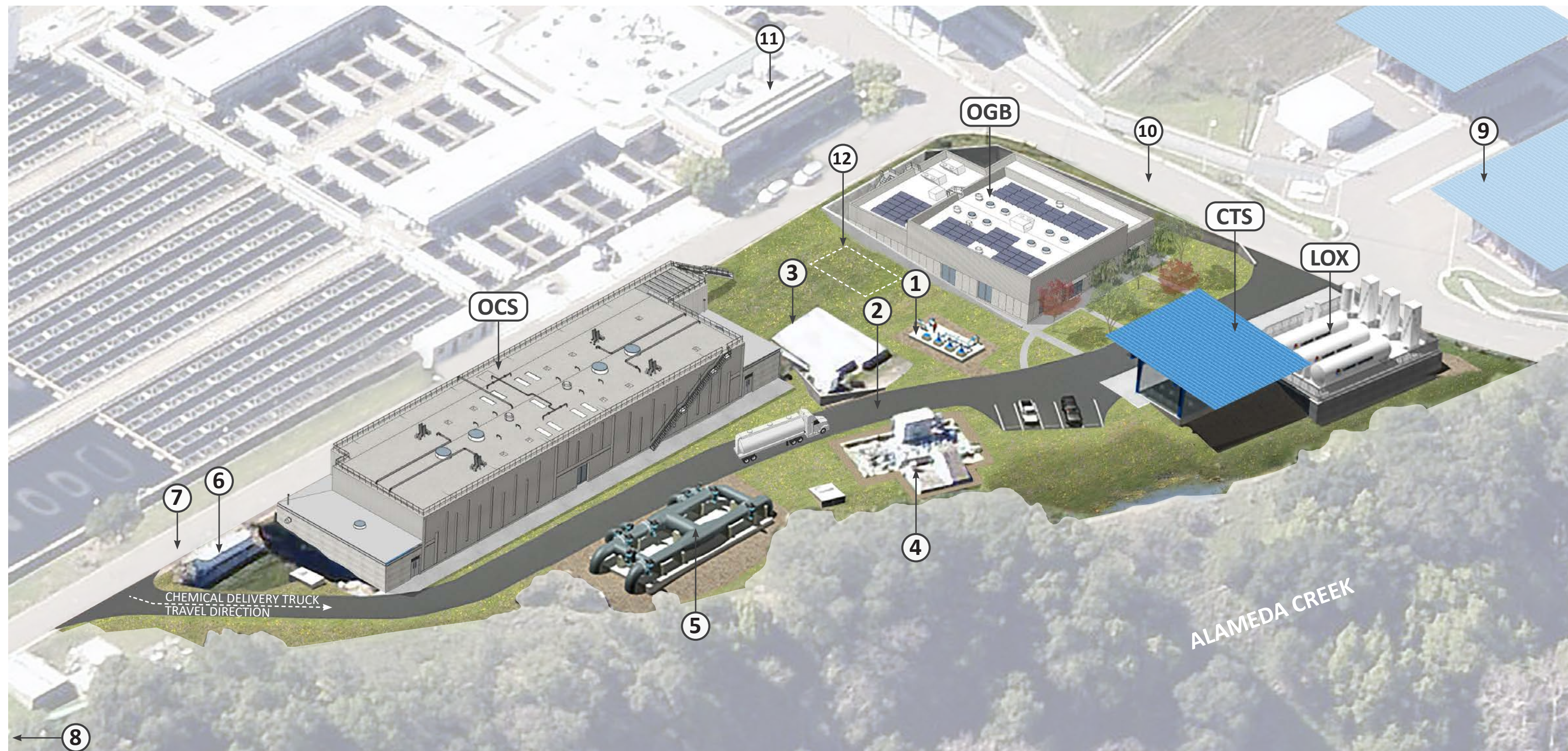












- [OGB]** OZONE GENERATION BUILDING
- [OCS]** OZONE CONTACTOR STRUCTURE
- [CTS]** CALCIUM THIOSULFATE FACILITY
- [LOX]** LIQUID OXYGEN FACILITY

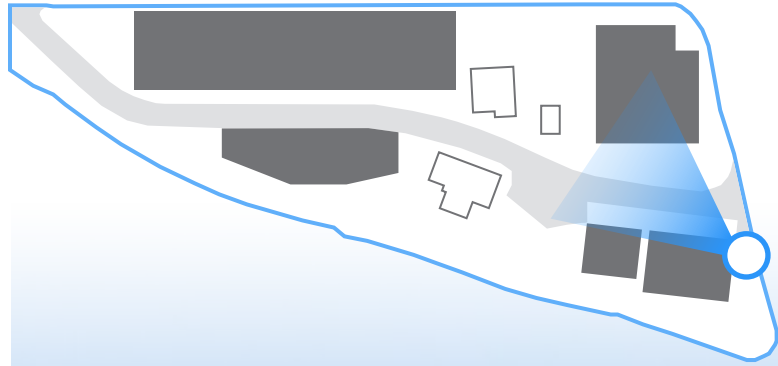
- ①** OPEN LOOP COILING WATER PUMP STATION
- ②** NEW ACCESS ROAD
- ③** [E] OVERFLOW CONTAINMENT BASIN

- ④** [E] PH & ALKALINITY ADJUSTMENT FACILITY
- ⑤** RAW WATER PIPING MANIFOLD
- ⑥** [E] CARBON DIOXIDE STORAGE FACILITY

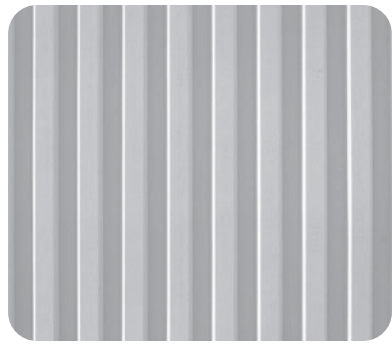
- ⑦** WEST ACCESS ROAD
- ⑧** REPLACE [E] WASHWATER RECOVERY PUMPS & SLUDGE LAGOON DECANT PUMPS
- ⑨** NEW METERING PUMPS @ [E] CHEMICAL STORAGE AREAS

- ⑩** MAIN PLANT ROAD
- ⑪** [E] OPERATIONS BUILDING
- ⑫** [E] OVERFLOW BOX (UNDERGROUND)









RIBBED CONCRETE TEXTURE



SMOOTH FORMED CONCRETE



FLUSH PANEL METAL DOORS  
TO MATCH ANODIZED ALUM.



STOREFRONT GLAZING  
W/ ANODIZED ALUM. FRAME



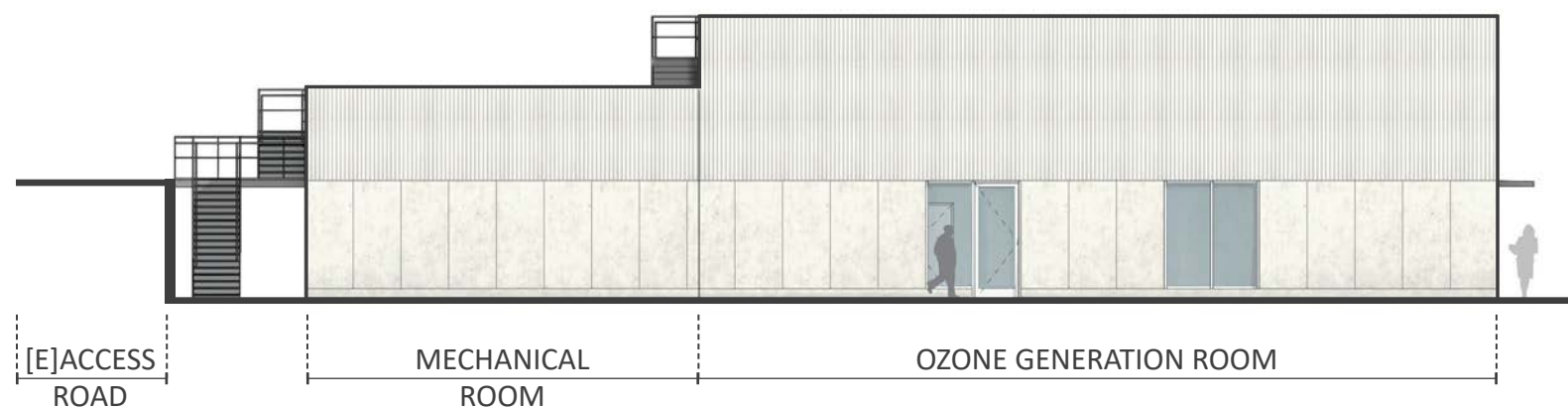
BI-FOLD DOORS  
W/ ANODIZED ALUM. FRAME



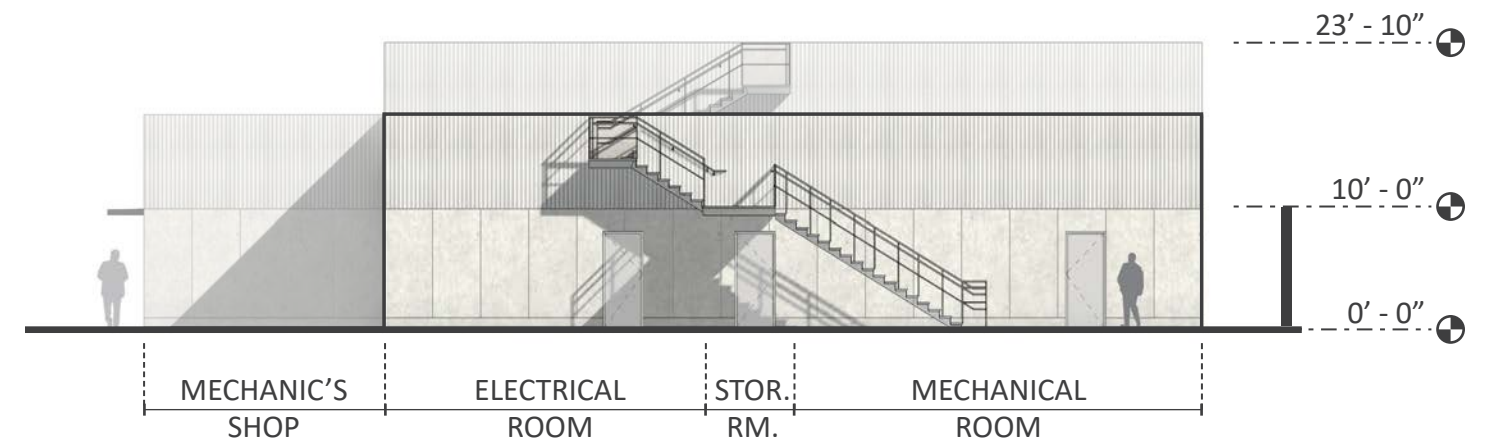
NORTH ELEVATION



EAST ELEVATION

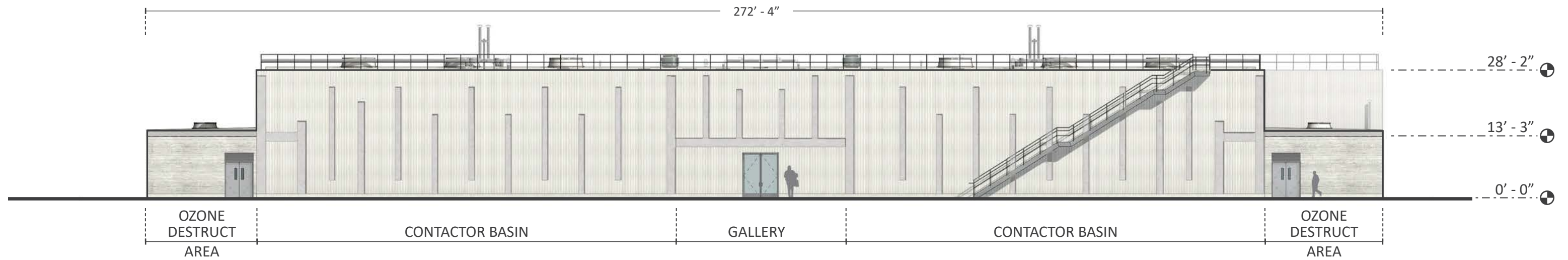


SOUTH ELEVATION

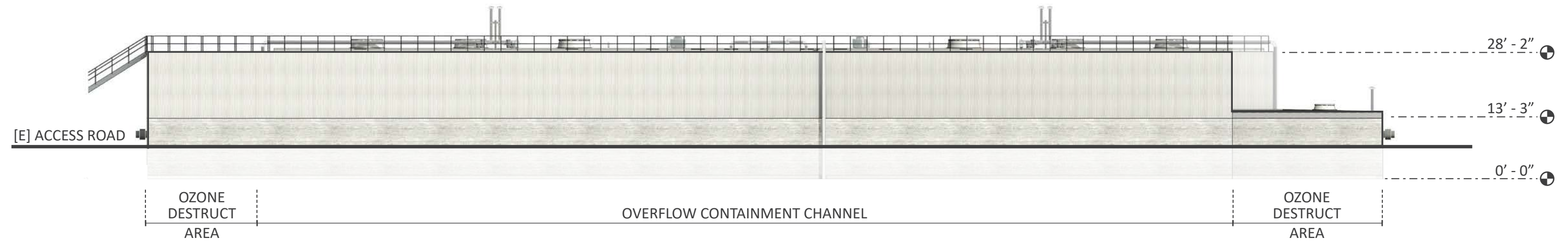


WEST ELEVATION

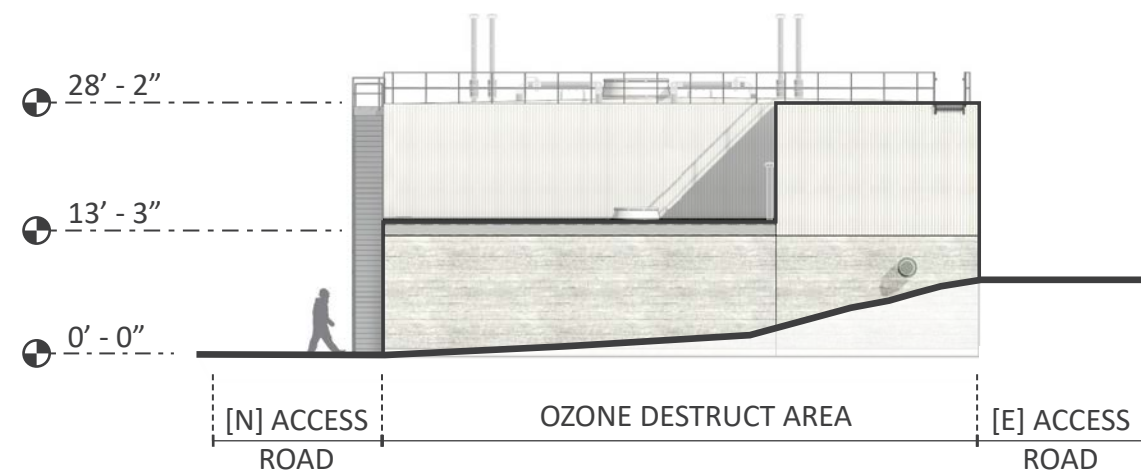




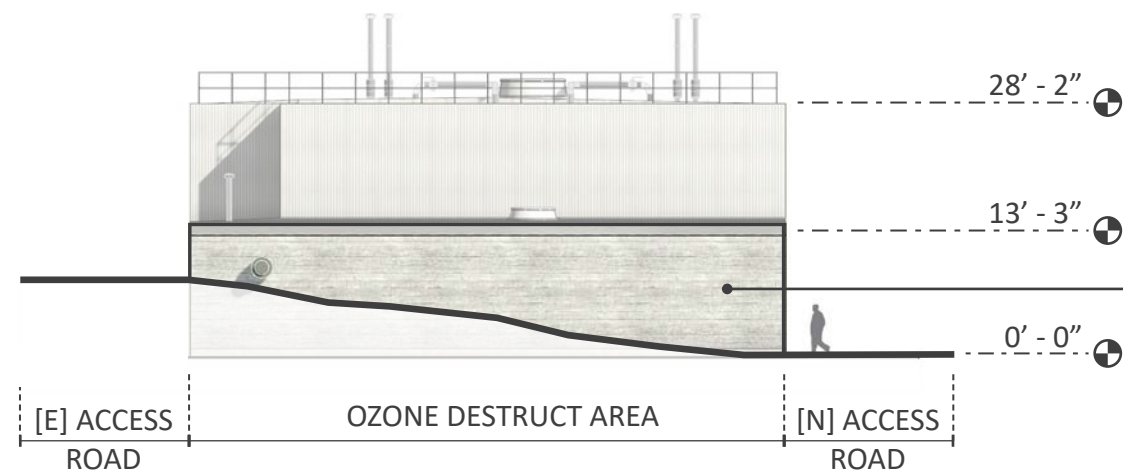
**EAST ELEVATION**



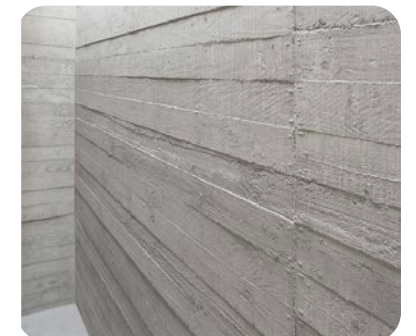
**WEST ELEVATION**



**NORTH ELEVATION**

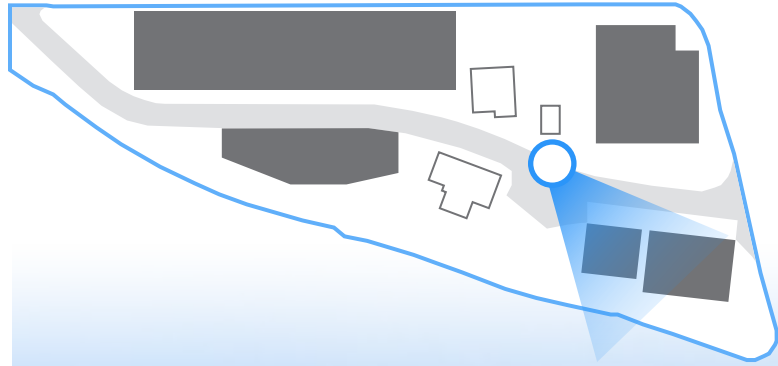


**SOUTH ELEVATION**



**BOARD-FORMED CONCRETE**







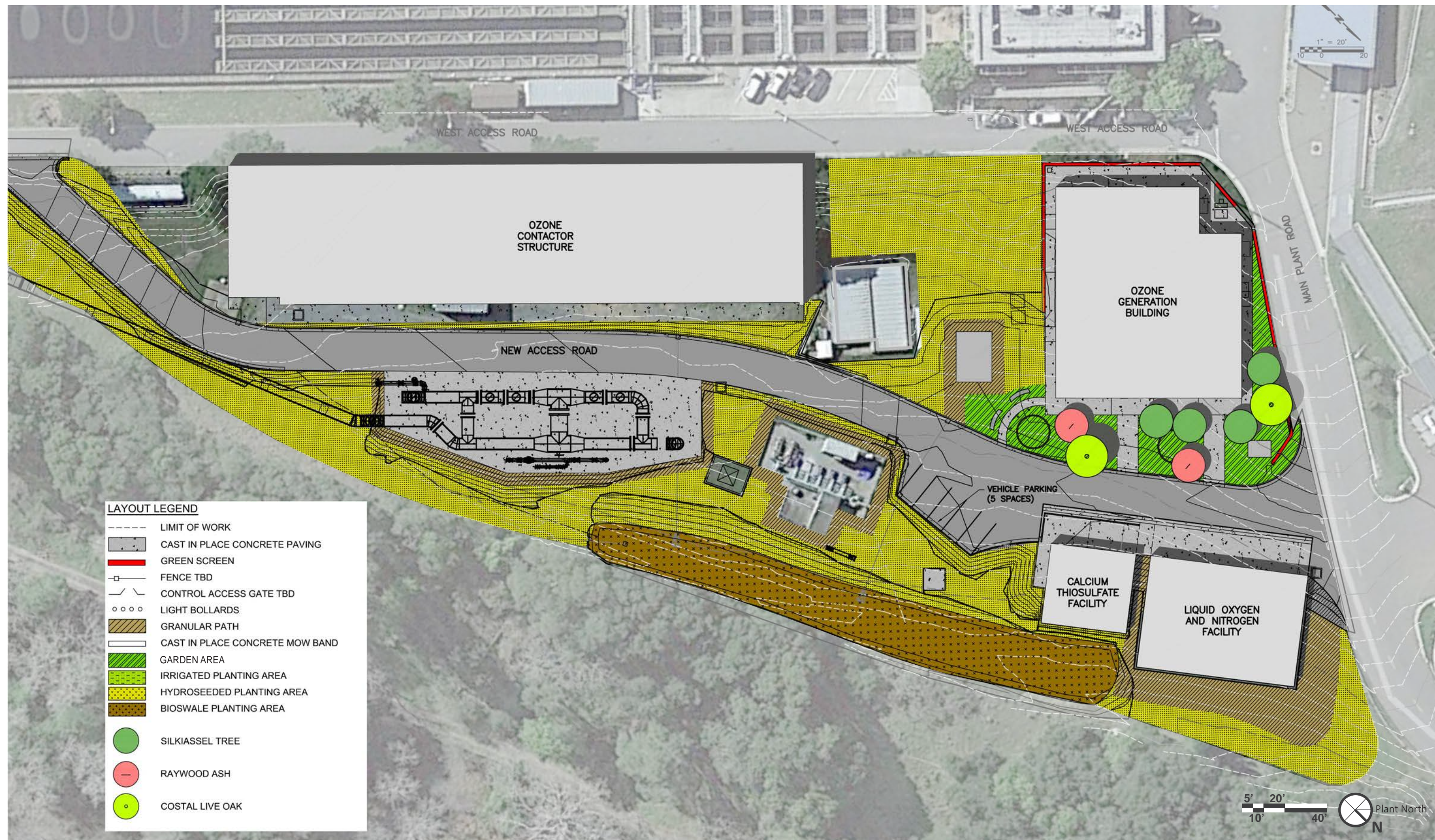


**[E] LIQUID OXYGEN FACILITY**  
 HARRY TRACY WATER TREATMENT PLANT



**[E] CHEMICAL STORAGE FACILITY**  
 SUNOL VALLEY WATER TREATMENT PLANT









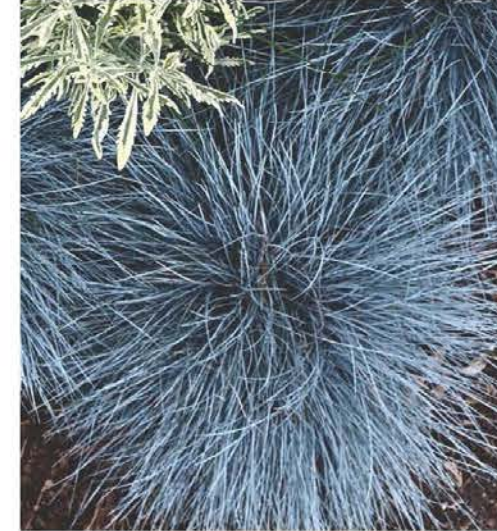
*Agapanthus Ever Sapphire*  
*Lily of the Nile*



*Buddleia Ultra Violet*  
*Butterfly Bush*



*Cistus 'Little Miss Sunshine'*  
*Little Miss Sunshine Rockrose*



*Festuca o. 'Beyond Blue'*  
*'Beyond Blue' Fescue*



*Lantana camara*  
*Lantana*



*Lomandra 'Lime' Tuff*  
*Dwarf Mat Rush*



*Loropetalum 'Purple Daydream'*  
*Dwarf Daydream Loropetalum*



*Salvia 'Killer Cranberry'*  
*Killer Cranberry Sage*



*Helictotrichon sempervirens*  
*Blue Oat Grass*



*Pennisetum 'Hameln'*  
*Dwarf Fountain Grass*



*Achillea Moonshine'*  
*Moonshine Yarrow*



*Baccharis pilularis*  
*Dwarf Coyote Bush*



*Juncus patens*  
*California Gray Rush*



*Salvia clevelandii*  
*Cleveland Sage*





*Arbutus unedo*  
Strawberry Tree



*Fraxinus a. 'Raywoodii'*  
Raywood Ash



*Garrya elliptica*  
Silktassel Tree



*Quercus agrifolia*  
Coastal Live Oak

**PROPOSED SHRUBS AND GROUND COVERS:**



*Arctostaphylos x densiflora*  
Vine Hill Manzanita



*Carpenteria californica*  
Anemone Bush



*Ceanothus 'Dark Star'*  
California Wild Lilac



*Coprosma p. 'Verde Vista'*  
Verde Vista Mirror Plant



*Lavatera assurgentiflora*  
California Mallow Shrub



*Rhamnus californica*  
Coffeeberry Shrub

**PROPOSED VINES:**



*Distictis buccinatoria*  
Blood-Red Trumpet Vine



*Lonicera sempervirens*  
Trumpet Honeysuckle

**GREEN SCREEN ON WALL:**



**BIOSWALE PLANTS:**



**HYDROSEED MIX:**





# THANK YOU

