



OCEAN BEACH CLIMATE CHANGE ADAPTATION ARTIST REVIEW PANEL ONE SUMMARY

MEETING DATE

May 13, 2022

VOTING SELECTION PANELISTS

Kim Anno, Professor, Painting and Drawing Program, California College of the Arts

Suzie Ferras, Art Commissioner

Trisha Goldberg, Independent Curator and Public Art Consultant

John Lindsey, Community Representative

Blair Randall, Arts and Education Program Manager, Public Utilities Commission

Monica Scott, Project Manager, Capital & Planning Division, SF Rec & Park

Weston Teruya, Artist

PROCESS

Arts Commission staff presented the qualifications of 20 artists selected from Ocean Beach Climate Change Adaptation Qualification Panel. "Yes/No" majority votes based on the criteria of Artistic Merit, Relevant Skills and Experience, and Meeting the Project Goals and Goals of the Civic Art Collection yielded 12 artists to move to Round Two.

Round Two:

The Artist Selection Panel discussed the qualifications of the semi-finalists and scored each artist on the following criteria (1= low score):

- Artistic Merit (1-10)
- Relevant Skills and Experience (1-10)
- Meeting the Project Goals and Goals of the Civic Art Collection (1-10)

Round Two voting yielded 3 finalists to recommend to the Arts Commission.

RESULTS

Mark Baugh-Sasaki	23.86
Ana Teresa Fernandez	23.14
Leo Bersamina	22.5

ARTS COMMISSION APPROVAL

Discussion and possible action: to approve the selected finalists, Mark Baugh-Sasaki, Leo Bersamina, and Ana Teresa Fernandez for the Ocean Beach Climate Change Adaptation public art project, as recommended by the artist review panel.

Ocean Beach Climate Change Adaptation Project



The San Francisco Public Utilities Commission (SFPUC) is leading a multiagency effort, including National Park Service (NPS), San Francisco Municipal Transportation Agency (SFMTA), San Francisco Recreation and Parks Department (RPD), and San Francisco Department of Public Works (DPW), to implement key initiatives of the [Ocean Beach Master Plan](#) under the [Ocean Beach Climate Change Adaptation Project](#). This work is necessary to protect the integrity of SFPUC wastewater assets including the Lake Merced Tunnel, the Westside Pump Station and the Oceanside Treatment Plant.

Ocean Beach Climate Change Adaptation Project

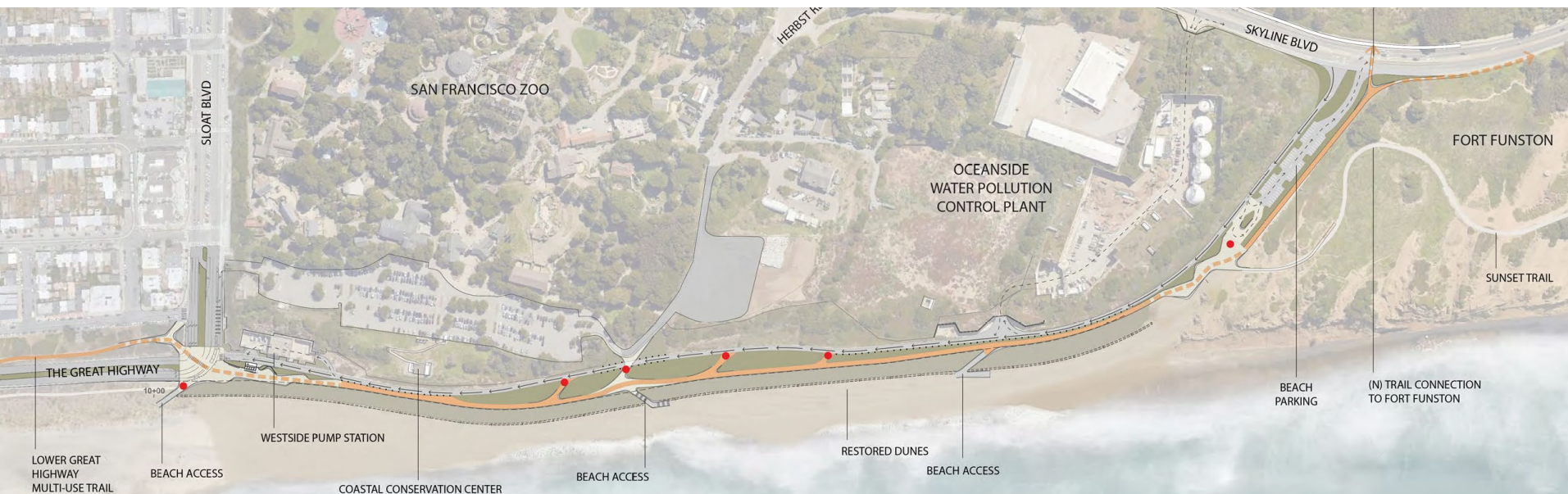
The Ocean Beach Climate Adaptation Project is situated along the Great Highway south of Sloat and north of Skyline. The Great Highway passes through Recreation and Parks property in this area.

Ocean Beach south of Sloat has experienced significant erosion during the past 15 years. The SPUR Ocean Beach Master Plan outlines a managed retreat strategy to allow for coastal erosion, while still protecting important city infrastructure, namely Public Utilities Commission wastewater pipes and associated infrastructure.

The strategy includes:

- A buried seawall to protect the Lake Merced Tunnel
- Restoration of beach and sand dune habitat
- Recreation and open space opportunity by closing the great highway and re-purposing land for a multi-use trail
- Roadway changes and intersection improvements
- Replace the Sloat Restroom with a new restroom building

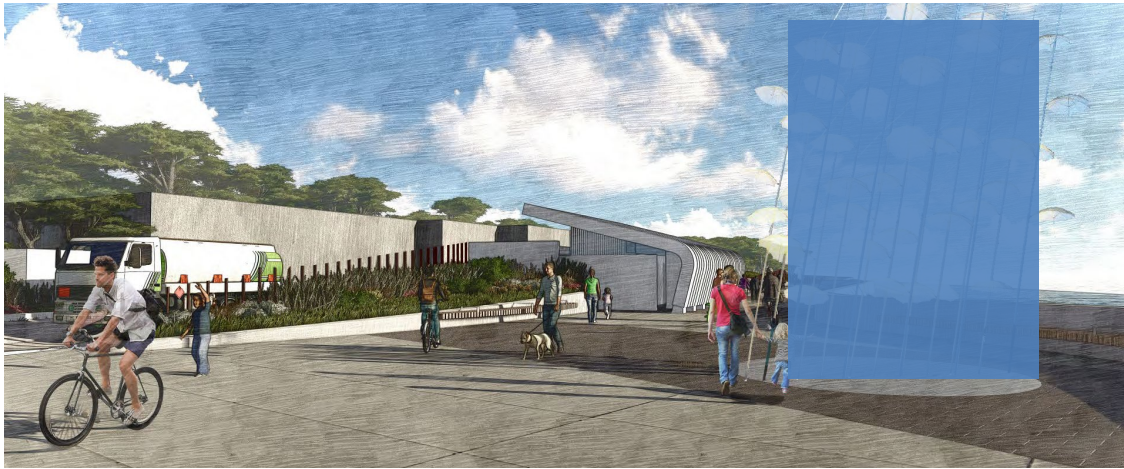
Recreation and Park's proposed improvements to the area include adding a new multi-use trail for pedestrian and bike access between Sloat and Skyline Blvd - connecting a link along the shoreline that is currently missing, and replacing coastal parking.





Ocean Beach Climate Change Adaptation Project

The Sloat Blvd. public plaza created through this project will be an access point to Ocean Beach bike and pedestrian paths and presents a tremendous opportunity for public art.



Public Art Project

Project Goals:

- Be an anchor point/ landmark for the new plaza
- Addresses and speaks to climate change and/or sea level rise
- Complements views to and along the ocean and scenic coastal areas
- Relates to and is visually compatible with the character of the site and surrounding areas (including forthcoming mural by artist Jet Martinez and existing sculptures by artist Mary Fuller at the nearby Westside Pump Station)

Artwork budget:

- \$300,000 inclusive of all artist's fees, as well as associated expenses for design, fabrication, insurance, transportation, and contingency. There will be a \$50,000 allocation for installation.



Mark Baugh-Sasaki



Ana Teresa Fernandez



Leo Bersamina

