

# BUCHANAN STREET MALL

Phase 1 Civic Design Review | May 2022



Prepared for:  
San Francisco Recreation & Parks Department

Prepared by:  
San Francisco Public Works



# PROJECT TEAM

Lauren Dietrich Chavez, Project Manager  
Michelle Pallavicini, Park Service Area Manager  
Jenny Sotelo, Park Section Supervisor  
*San Francisco Recreation and Parks Department*

Sarah Bloom  
Willis Logsdon  
Ying-Chik Lee  
Erika Uribe  
Kristen Matsumura  
Ann-Ariel Vecchio  
*San Francisco Public Utilities Commission*

Brett Desmarais, Landscape Architect  
Winnie Chang, Landscape Design Assistant  
Alexis Ng, Electrical Engineer  
Lesley Wong, Hydraulic Engineer  
Cassandra Hom, Hydraulic Engineer  
Stephen Leung, Structural Engineer  
*San Francisco Public Works*

AGS, Inc.  
*Consulting Geotechnical Investigation*

Annie Youngeman  
Ariella Levitch  
*The Trust for Public Land*

Sophie Constantinou  
Tamara Walker  
Widya Batin  
Sadiq Norris  
*Citizen Film*

Tyrone Mullins  
*Green Streets*



BUCHANAN STREET MALL

Phase 1 | Civic Design Review | May 2022



# BUCHANAN STREET MALL 5-BLOCK PROGRAM OVERVIEW

Engagement | Existing Conditions | Project Delivery

# PROJECT LOCATION



## Western Addition, San Francisco

Located roughly in the center of San Francisco, the Western Addition developed as a Victorian streetcar suburb. It survived the [1906 San Francisco earthquake](#) with its [Victorian-style buildings](#) largely intact. Today, the term Western Addition is roughly synonymous with the Fillmore and Cathedral Hill neighborhoods.



## The Fillmore, “Harlem of the West”

At the heart of the Western Addition lies the Fillmore District, once known for its flourishing jazz scene, dubbed the “Harlem of the West.” Today, the district is locally known as “Fillmoe”, “The Mo” or MOE, which means “Money Over Everything.”



## Buchanan Street Mall

Two blocks east of Fillmore Street runs Buchanan Street, five blocks of which was turned into a pedestrian boulevard, or Mall, in 1975. By the mid 1980s, the neighborhood faced violence and a drug epidemic, and those issues spilled over into the park creating an atmosphere of fear. The park had been avoided by many residents until recently.



# EXISTING CONDITIONS



Fulton to Grove Block



Turk to Golden Gate Block



McAllister to Fulton Block

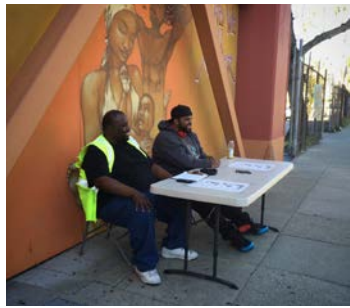


Turk to Eddy Block



# OUTREACH & COMMUNITY ENGAGEMENT 2015

2015



Community Engagement



Activation Process



Activation Community Meetings



Activation Elements Installed



Activation Celebration

source: 2017 Buchanan Street Mall Vision Statement



BUCHANAN STREET MALL

Phase 1 | Civic Design Review | May 2022





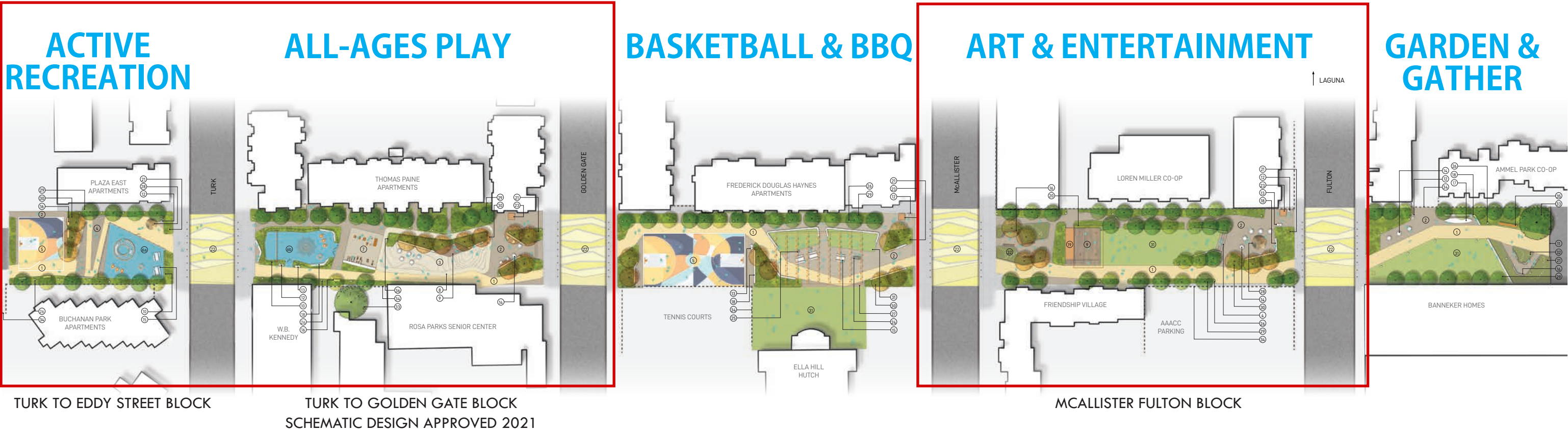
# OUTREACH & COMMUNITY ENGAGEMENT 2015 - 2020



source: 2017 Buchanan Street Mall Vision Statement, with modification



# APPROVED CONCEPT DESIGN APRIL 2020



**Project Goals:**

- 1. Safety, Lighting & Beautification
- 2. Connect Blocks & Unify the Community
- 3. Tell the Story of the Community & the Neighborhood
- 4. Social Interaction & Multi-Generational Recreation
- 5. Skills Training & Jobs Creation

**Key Features:**

- Memory Walk
- Gardens
- Lighting & Improved Safety
- Micro-Enterprise Kiosks
- Gateways
- Picnic Areas
- Stages
- Sports Courts
- Playgrounds and Fitness

Graphic: 2020 Buchanan Street Mall Concept Plan by OCB



## BUCHANAN STREET MALL

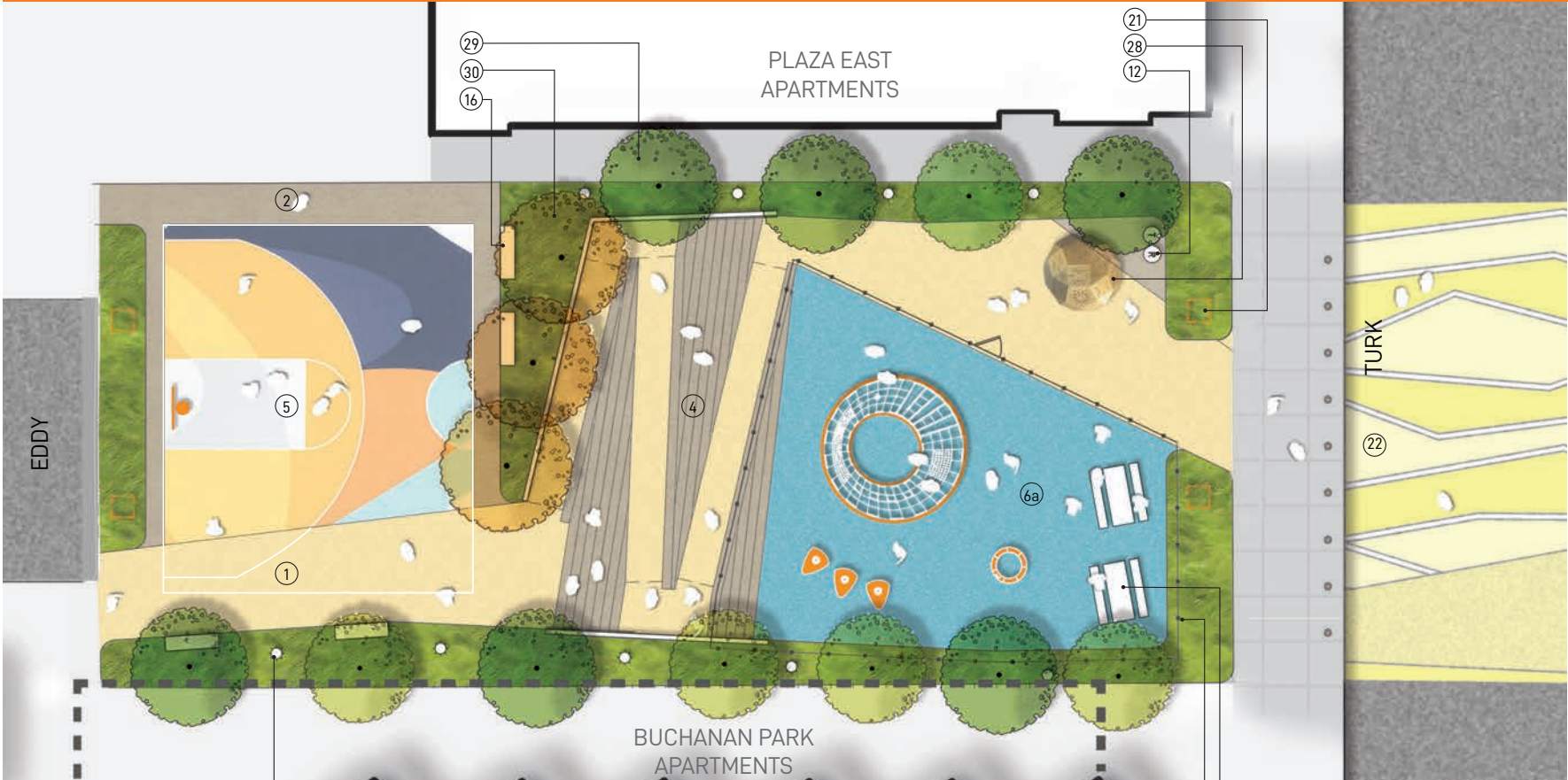
Phase 1 | Civic Design Review | May 2022





# THEMATIC GOALS FOR EDDY TO TURK BLOCK

FOR REVIEW TODAY



## ACTIVE RECREATION



Basketball Court Surfacing



Play Area Fence and Gate



Integrated Sloped Walk and Stair



Sample Play Elements



Pedestrian Pole Light

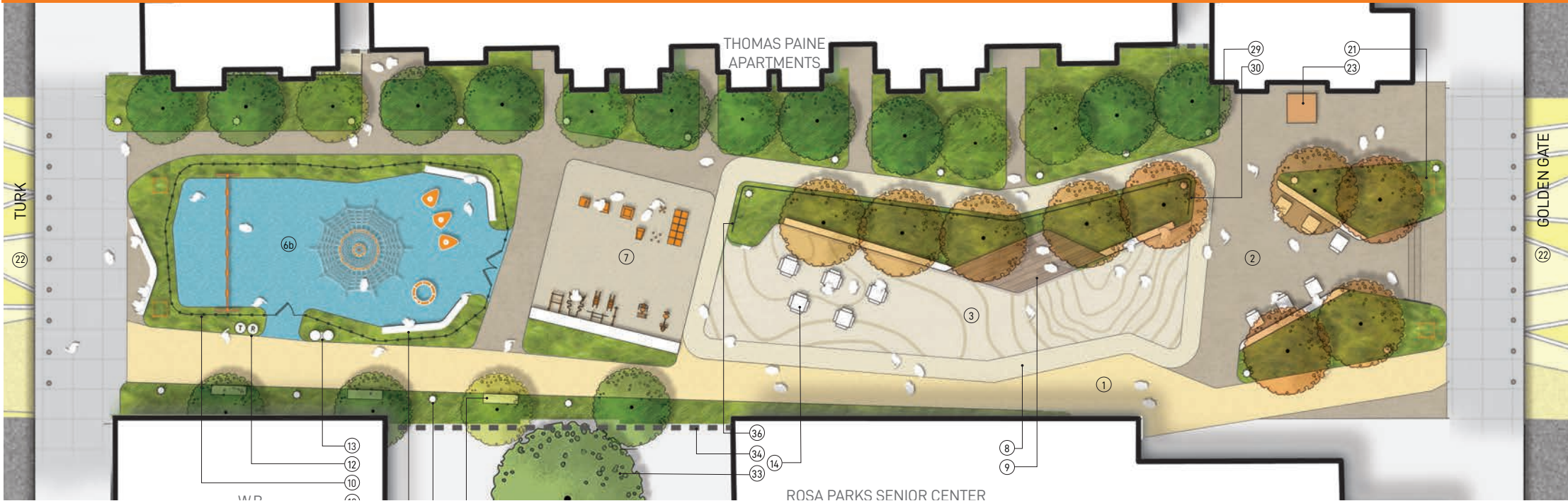
source: 2020 Buchanan Street Mall Community Outreach Banners by TPL





# THEMATIC GOALS FOR TURK TO GOLDEN GATE BLOCK

REVIEWED SEPTEMBER 2021



## ALL-AGES PLAY



source: 2020 Buchanan Street Mall Community Outreach Banners by TPL





# THEMATIC GOALS FOR GOLDEN GATE TO MCALLISTER BLOCK

FOR FUTURE REVIEW



## BASKETBALL & BBQ



Basketball Court Surfacing



Memory Walk Exemplary Image



String Lights



Micro-enterprise Kiosk



Pedestrian Pole Light

source: 2020 Buchanan Street Mall Community Outreach Banners by TPL





# THEMATIC GOALS FOR MCALLISTER TO FULTON BLOCK

FOR REVIEW TODAY



## ART & ENTERTAINMENT



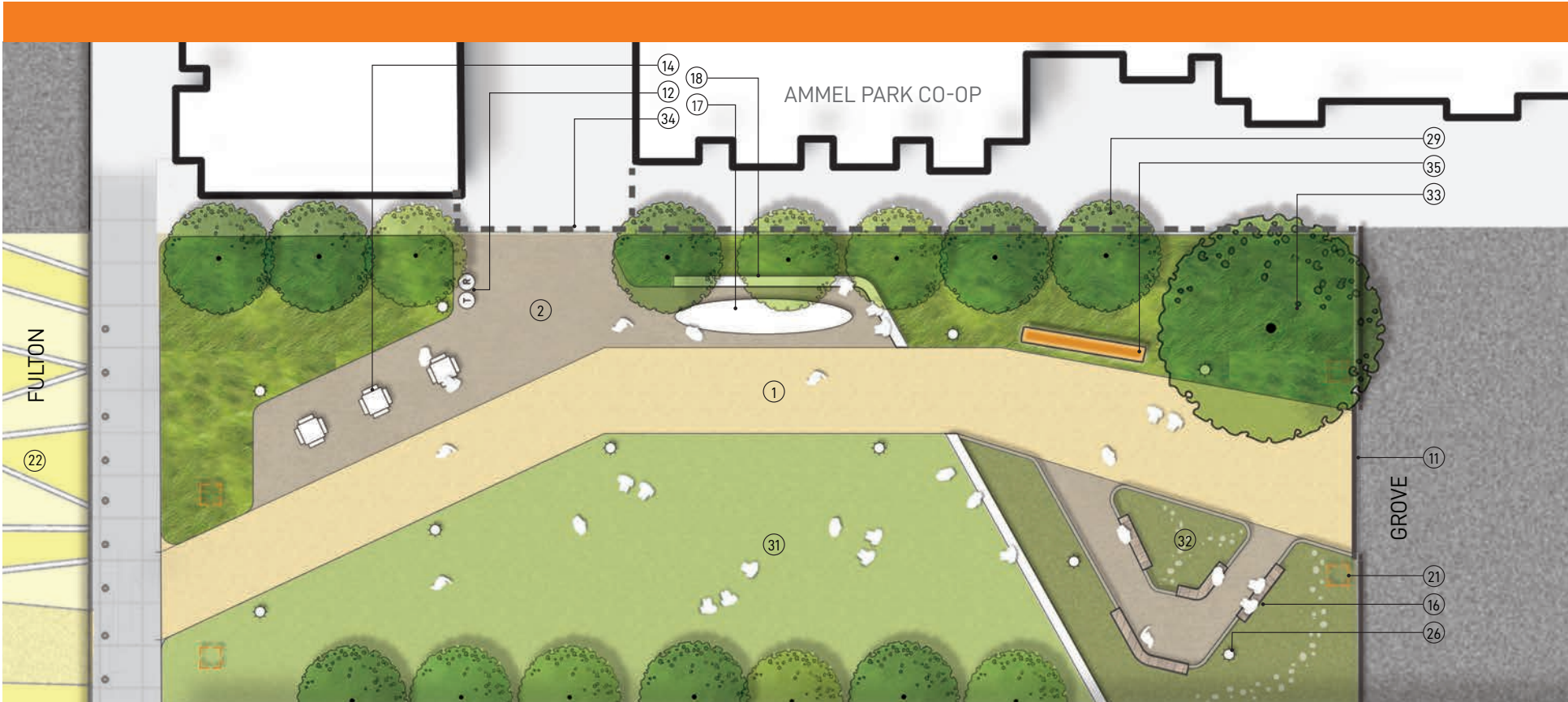
source: 2020 Buchanan Street Mall Community Outreach Banners by TPL





# THEMATIC GOALS FOR FULTON TO GROVE BLOCK

FOR FUTURE REVIEW



## GARDEN & GATHER



Play Area Fence and Gate



Fixed Tables and Chairs



Memory Walk Exemplary Image



Memory Walk Exemplary Image



Pedestrian Pole Light

source: 2020 Buchanan Street Mall Community Outreach Banners by TPL



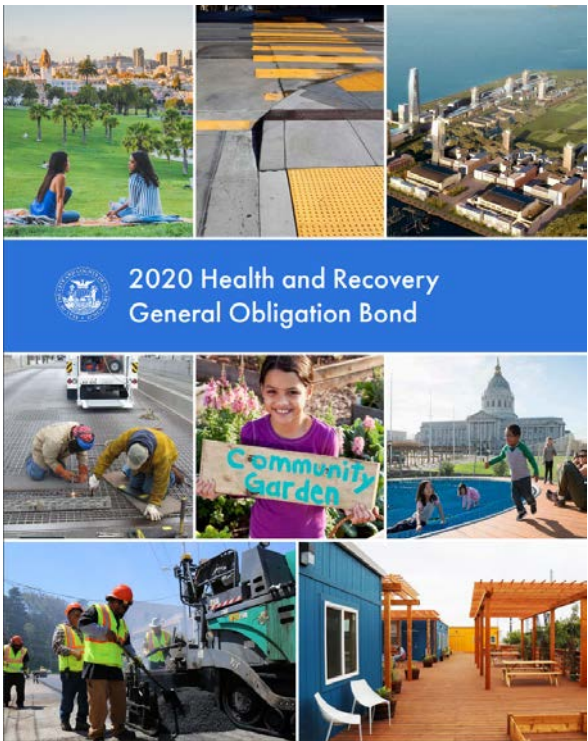
# STAKEHOLDERS AND FUNDING:

## Confirmed Funding:

- CA State Budget - Senator Wiener
- 2020 Health & Recovery Bond
- General Fund
- Let'sPlaySF!
- Development Impact Fees
- Urban Greening Grant
- Trust for Public Land (in-kind)
- Proposition 68 Statewide Grant
- SFPUC Joint Green Infrastructure Capital Project

## Pending Funding:

- Outdoor Recreational Legacy Partnerships
- Additional Development Impact Fees



## BUCHANAN STREET MALL





  **RECAP: TURK TO GOLDEN GATE BLOCK**  
  **PHASE 1 APPROVAL, SEPTEMBER 2021**

# SITE PLAN



- (A)

RAIN GARDEN
- (B)

PROGRAM GARDEN
- (C)

MICROENTERPRISE KIOSK  
DESIGN BY OTHERS
- (D)

NATIVE PLANTING
- (E)

PLAYGROUND  
AGES 5-12
- (F)

ALL-AGES FITNESS
- (G)

STAGE AND PLAZA
- (H)

GATEWAY ELEMENTS  
DESIGN BY OTHERS
- (I)

MEMORY WALK  
DESIGN BY OTHERS

----- PARCEL BOUNDARY



BUCHANAN STREET MALL

Phase 1 | Civic Design Review | May 2022





# FURNISHINGS



Seatwall  
*Concrete wall with wood seat & back*



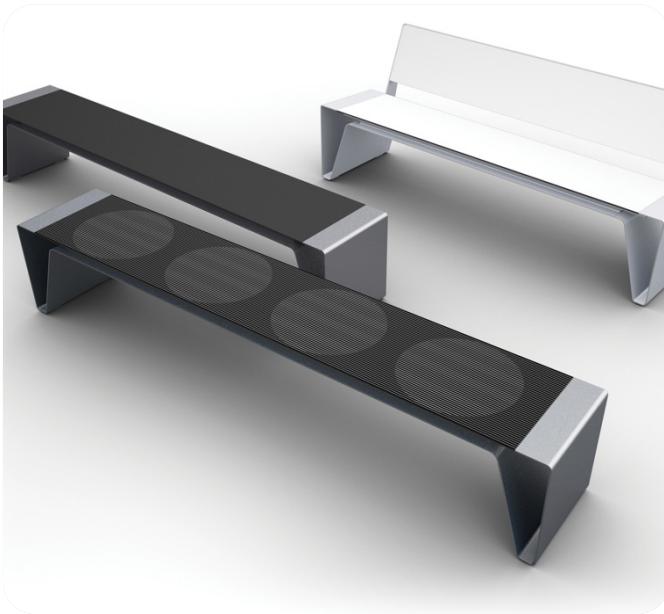
Picnic Table  
*Metal*



Hex Platform  
*Metal base with wood top*



Bicycle Rack  
*Metal*



Bench  
*Metal*



Swing Bench  
*Wood bench with metal frame*



Hex Planter  
*Metal*



Removable Bollard  
*Metal*

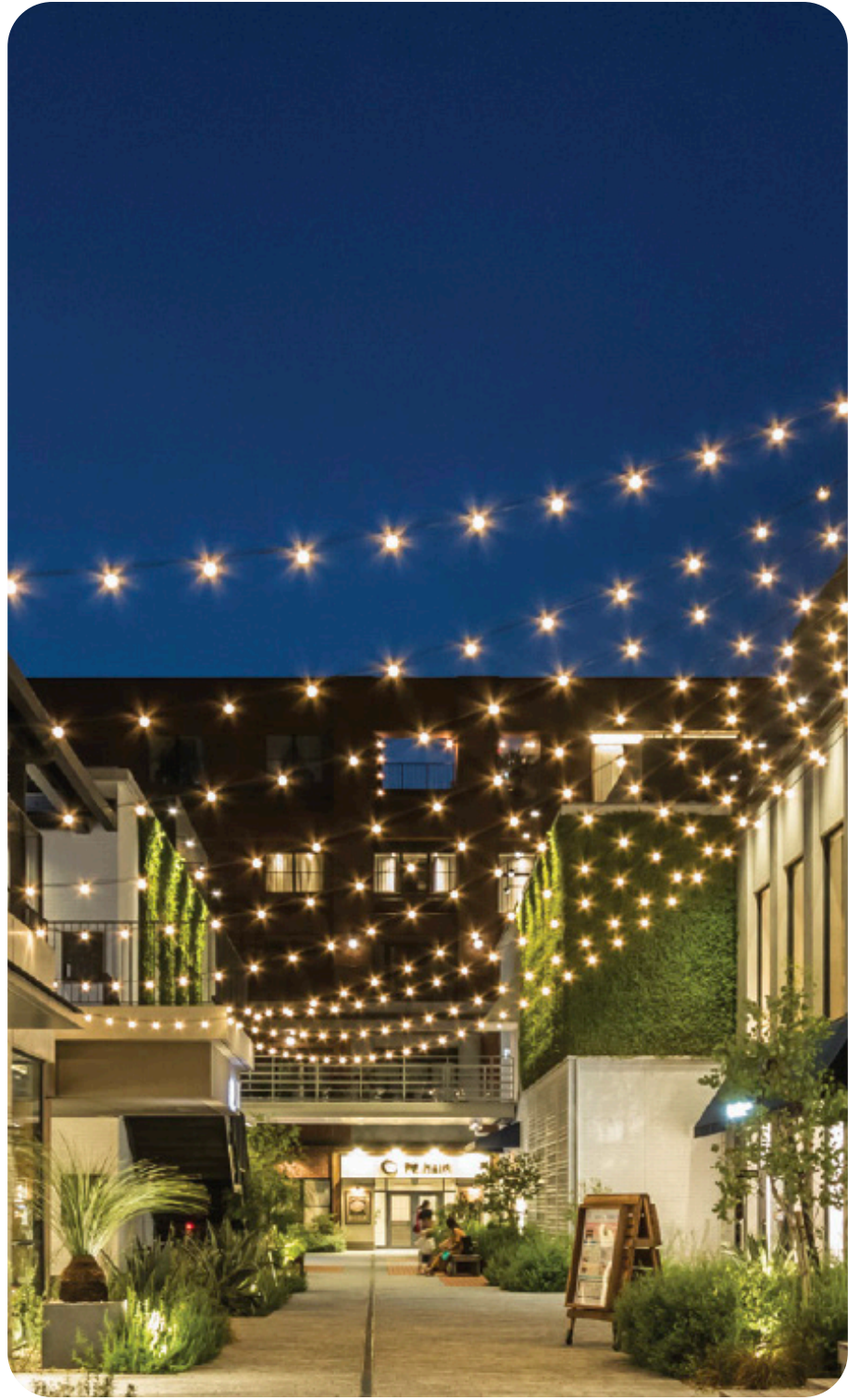
## BUCHANAN STREET MALL - TURK TO GOLDEN GATE



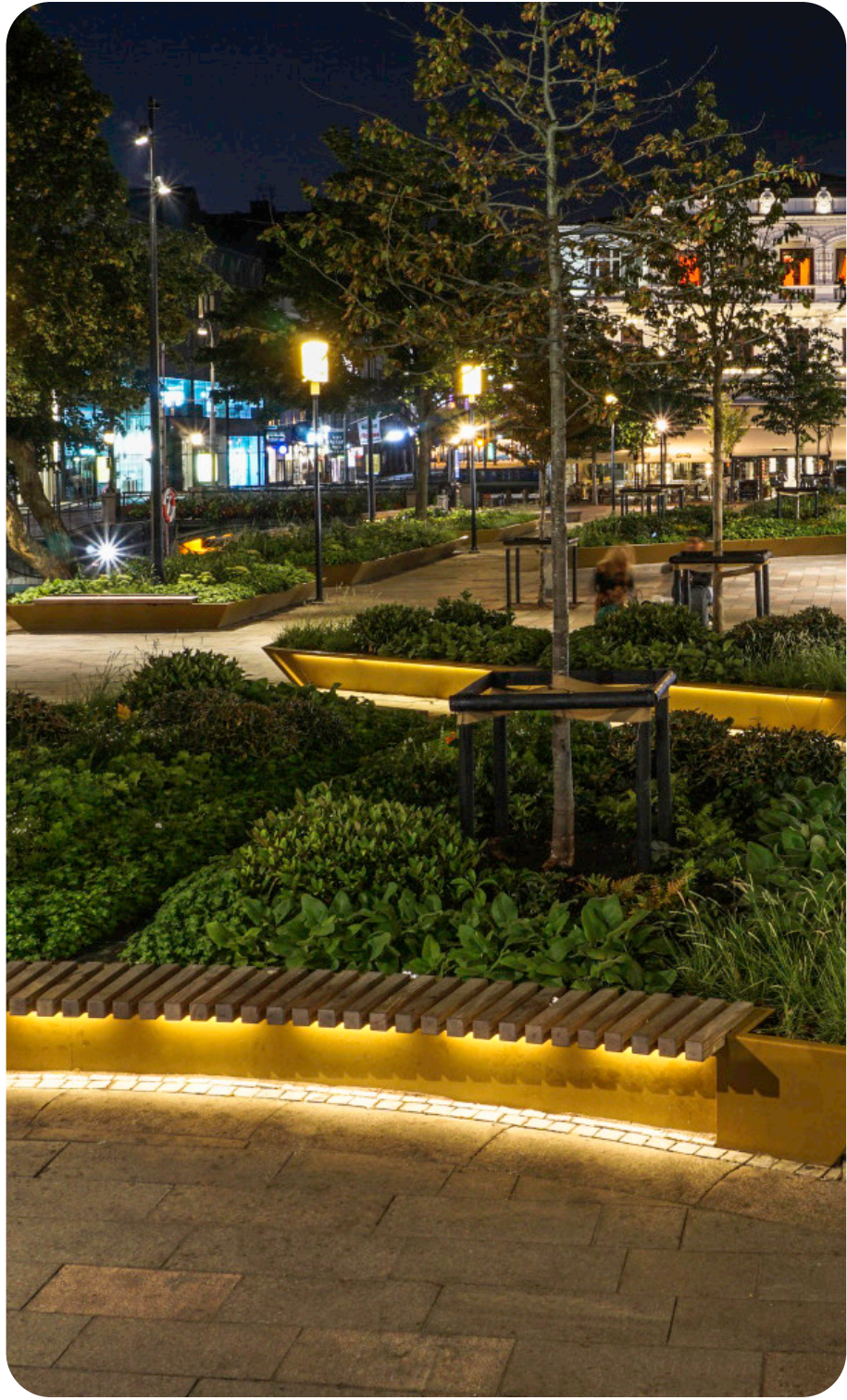
# LIGHTING



Pedestrian Pole Lighting



Catenary Lighting



Ambient Lighting



# SURFACE MATERIALS



Exposed Aggregated Concrete



Pervious Concrete



Synthetic Turf

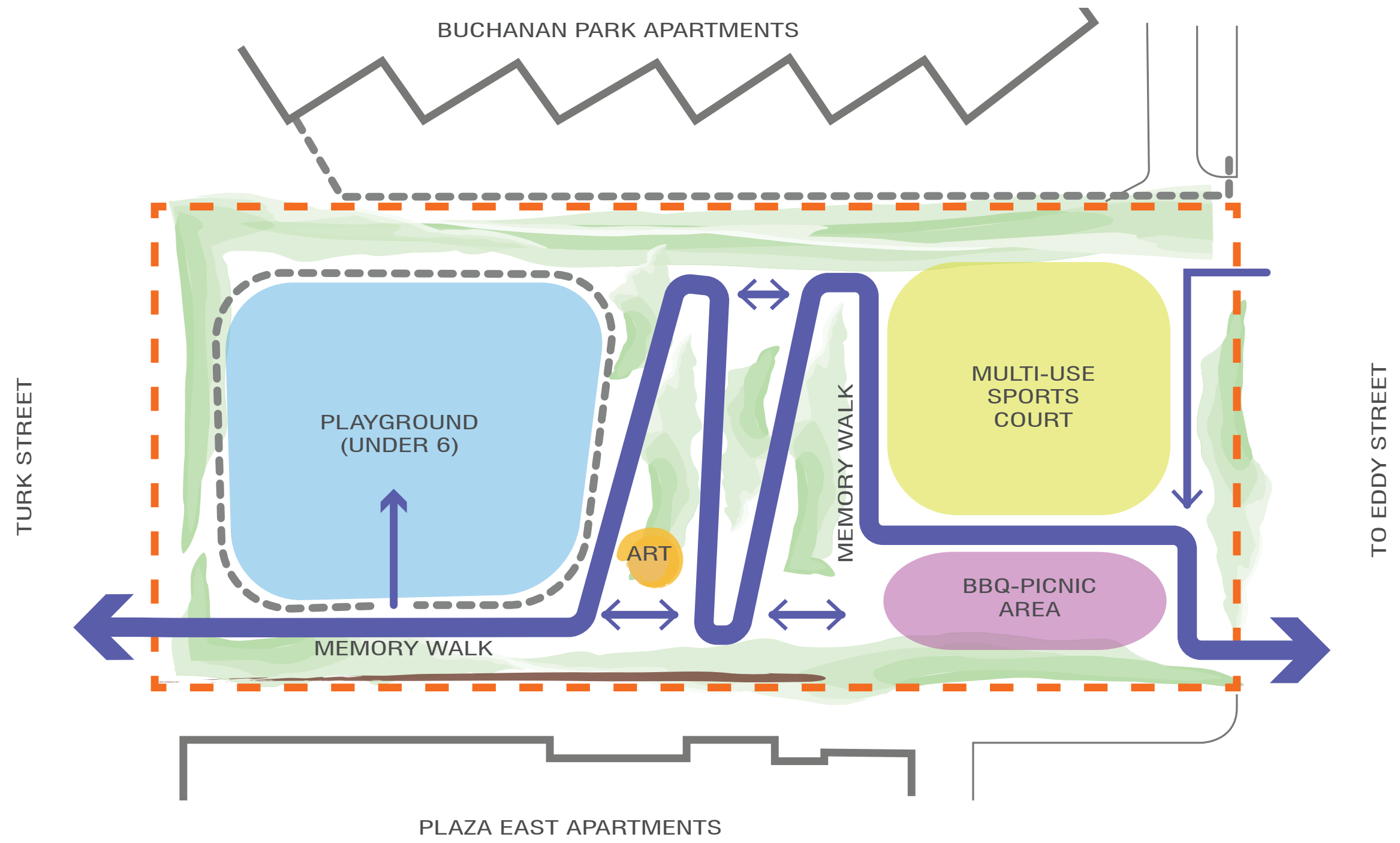


Decking

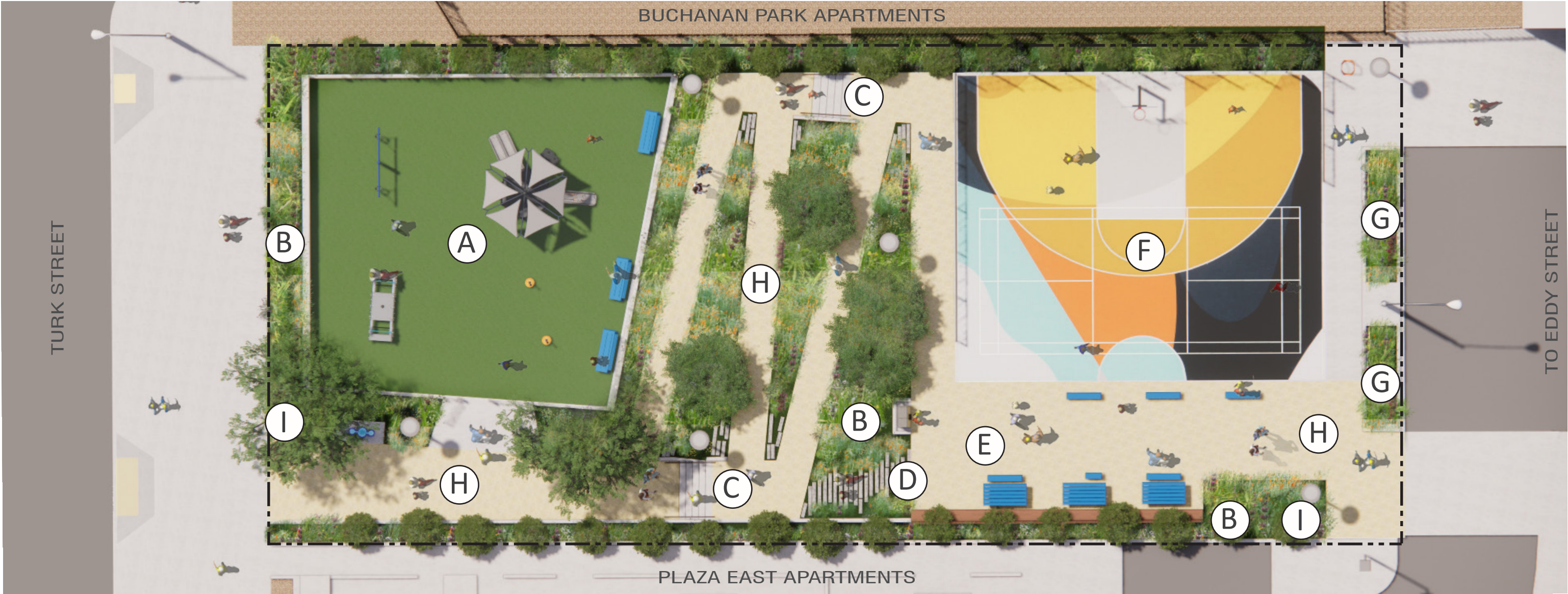


  **TURK STREET TO EDDY STREET BLOCK:**  
  **SCHEMATIC DESIGN**

# SITE PROGRAMMING + CIRCULATION



# SITE PLAN: PROGRAMMING



- (A) **PLAYGROUND**  
AGES 6 & UNDER
- (B) **NATIVE PLANTING**
- (C) **CONCRETE STEPS**
- (D) **STONE STEPS**
- (E) **BBQ & PICNIC AREA**
- (F) **MULTI-SPORT COURT**
- (G) **RAIN GARDEN**
- (H) **MEMORY WALK**  
DESIGN BY OTHERS
- (I) **GATEWAY ELEMENT**  
DESIGN BY OTHERS

----- PARCEL BOUNDARY



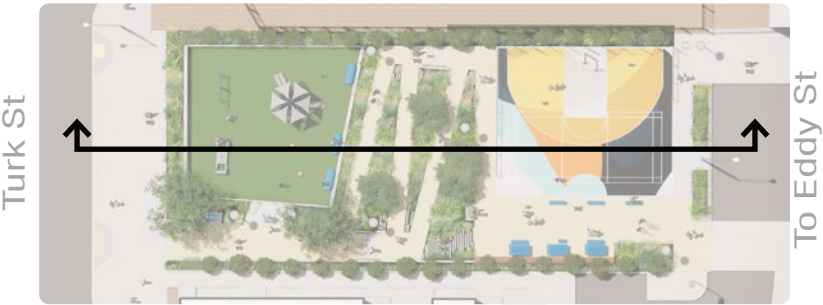
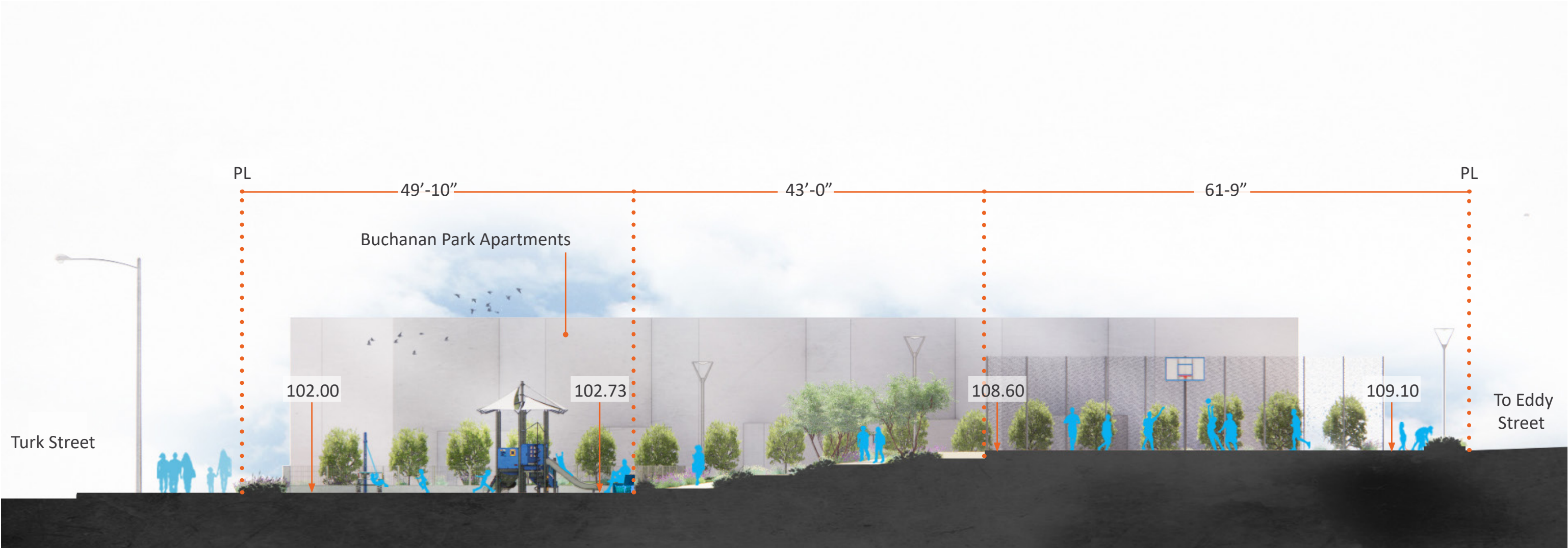
BUCHANAN STREET MALL

Phase 1 | Civic Design Review | May 2022





# SITE SECTION: TURK TO EDDY





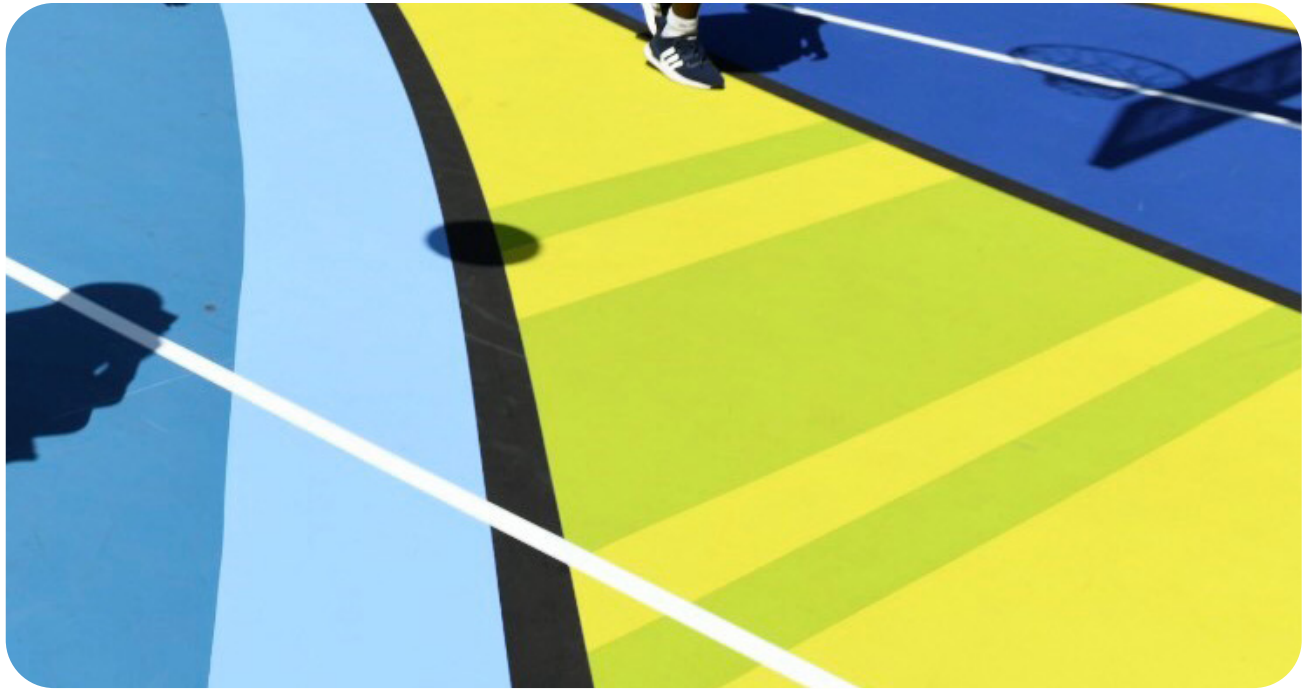
# SURFACE MATERIALS



Synthetic Turf



Pervious Concrete



Sports Court



Salavaged Stone Curb





# FURNISHINGS



Seatwall  
*Concrete wall with wood seat & back*



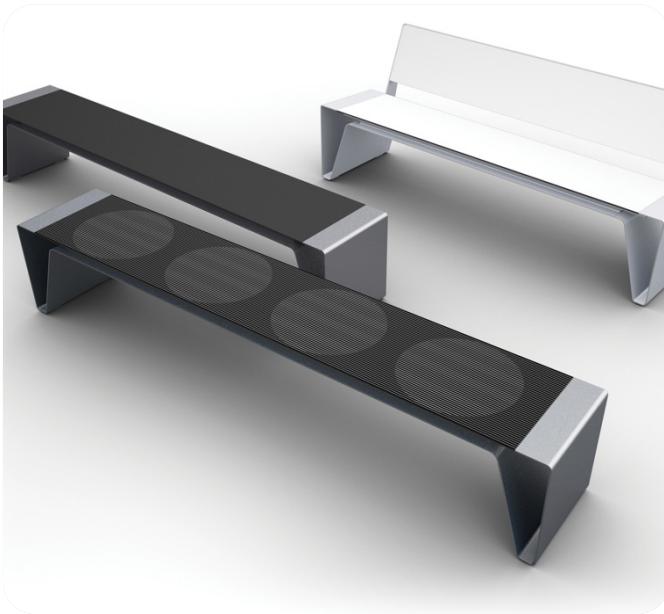
Picnic Table  
*Metal / Metal and Wood*



Drinking Fountain + Bottle Filler



Bicycle Rack  
*Metal*



Bench  
*Metal*



Removable Bollard  
*Metal*



BBQ Grill  
*Metal*



# PLAYGROUND EQUIPMENT (AGES 6 & UNDER)



Climber



Spinner



Swing



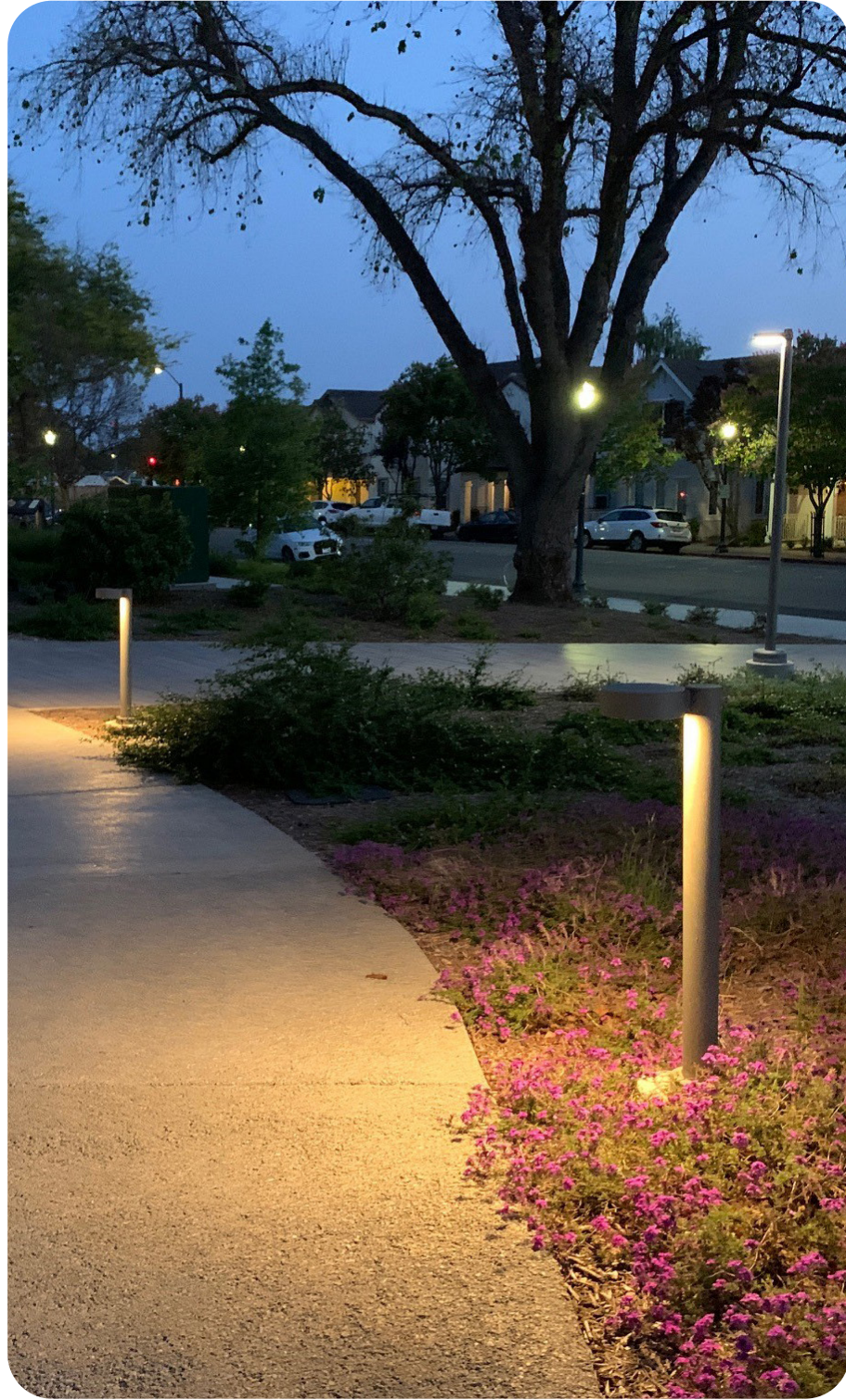
Seesaw



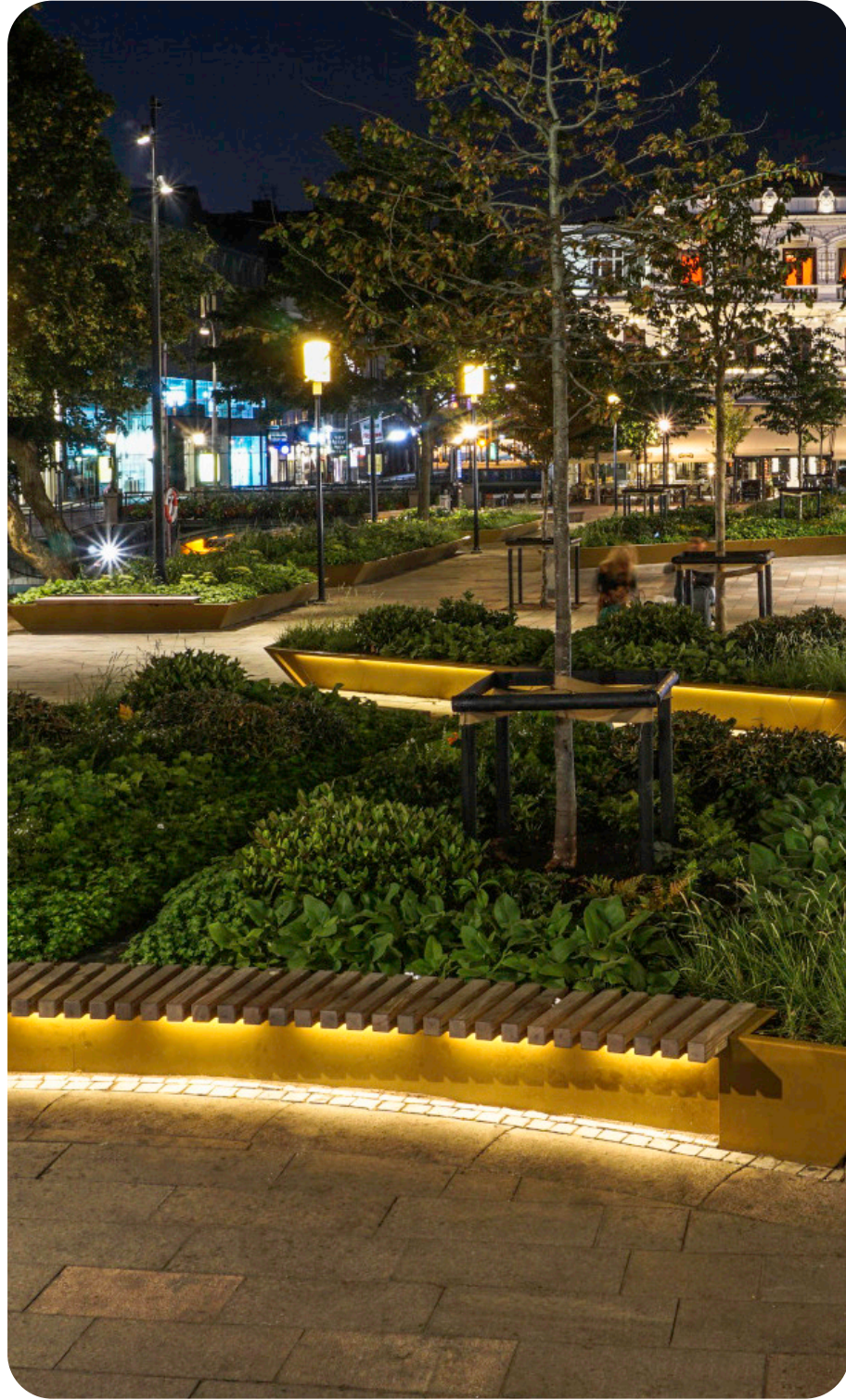
# LIGHTING



Pedestrian Pole Lighting



Pedestrian Bollard Lighting



Recessed Ambient Lighting



# PERSPECTIVE: TURK STREET ENTRY





# PERSPECTIVE: EDDY STREET ENTRY

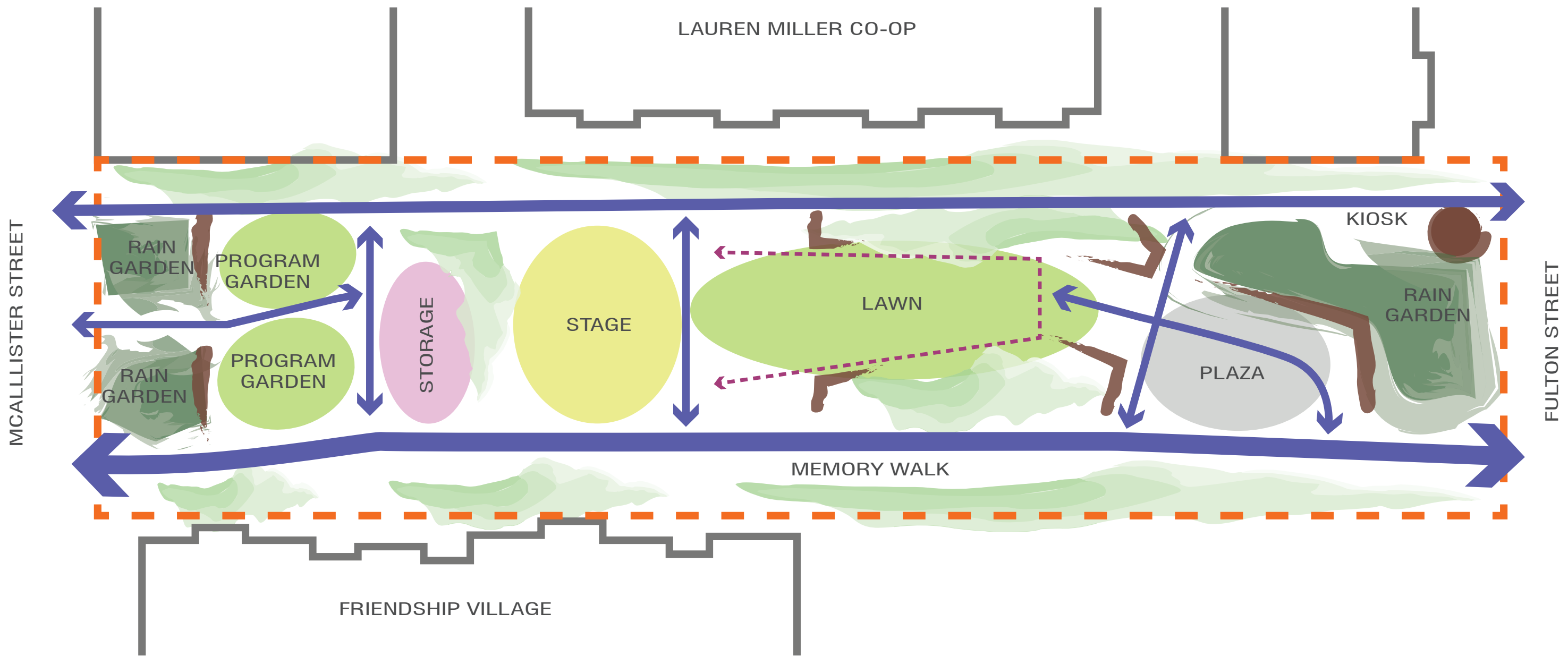




  **MCALLISTER STREET TO FULTON STREET BLOCK:**  
  **SCHEMATIC DESIGN**

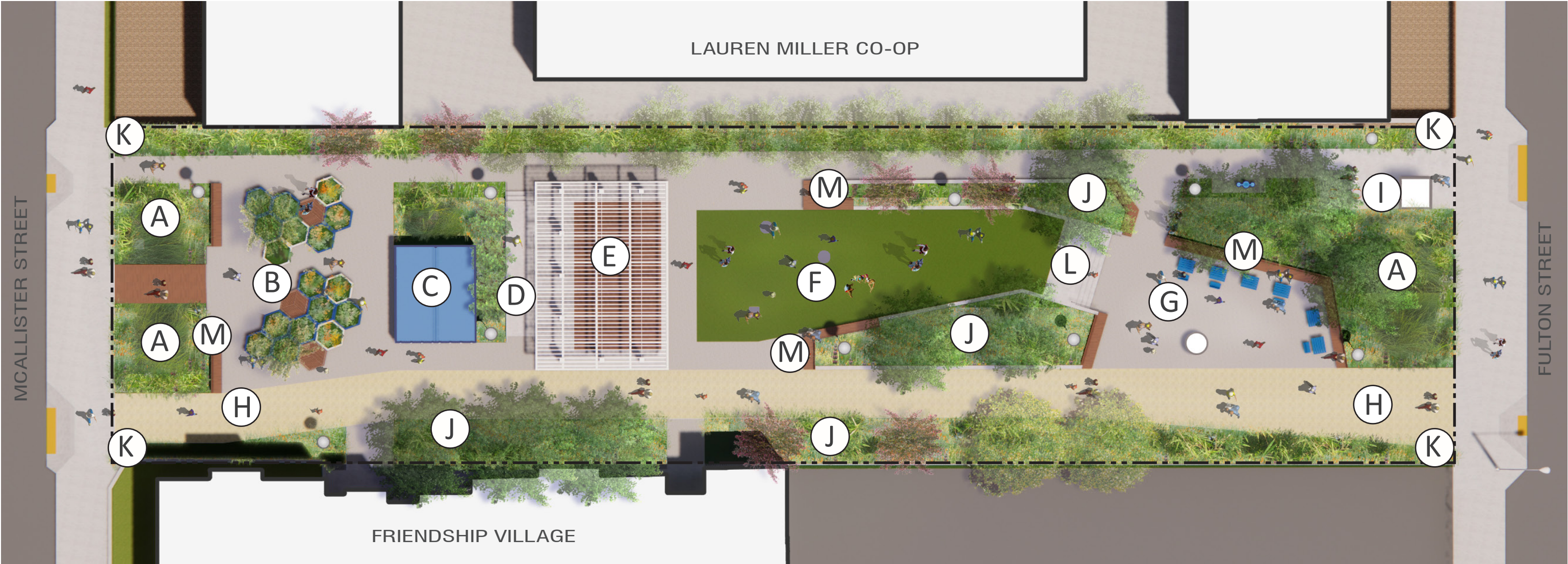


# SITE PROGRAMMING + CIRCULATION





# SITE PLAN



(A) RAIN GARDEN

(B) PROGRAM GARDEN

(C) STORAGE

(D) STAGE RAMP

(E) STAGE & CANOPY

(F) LAWN

(G) PLAZA

(H) MEMORY WALK  
DESIGN BY OTHERS

(I) MICROENTERPRISE KIOSK  
DESIGN BY OTHERS

(J) NATIVE PLANTING

(K) GATEWAY ELEMENTS  
DESIGN BY OTHERS

(L) STEPS

(M) SEAT WALLS

--- PARCEL BOUNDARY

0' 5' 10' 20'



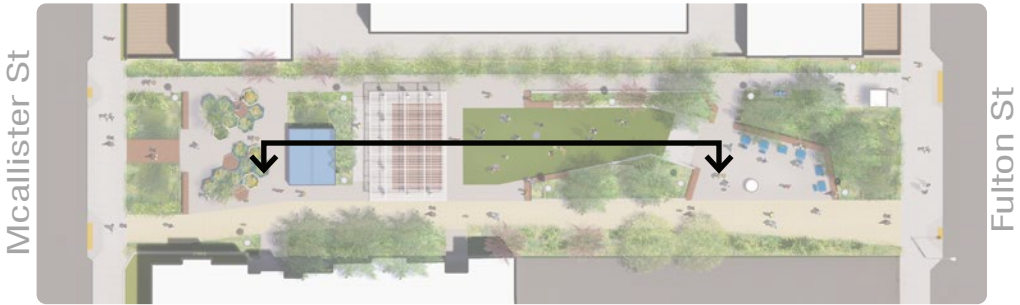
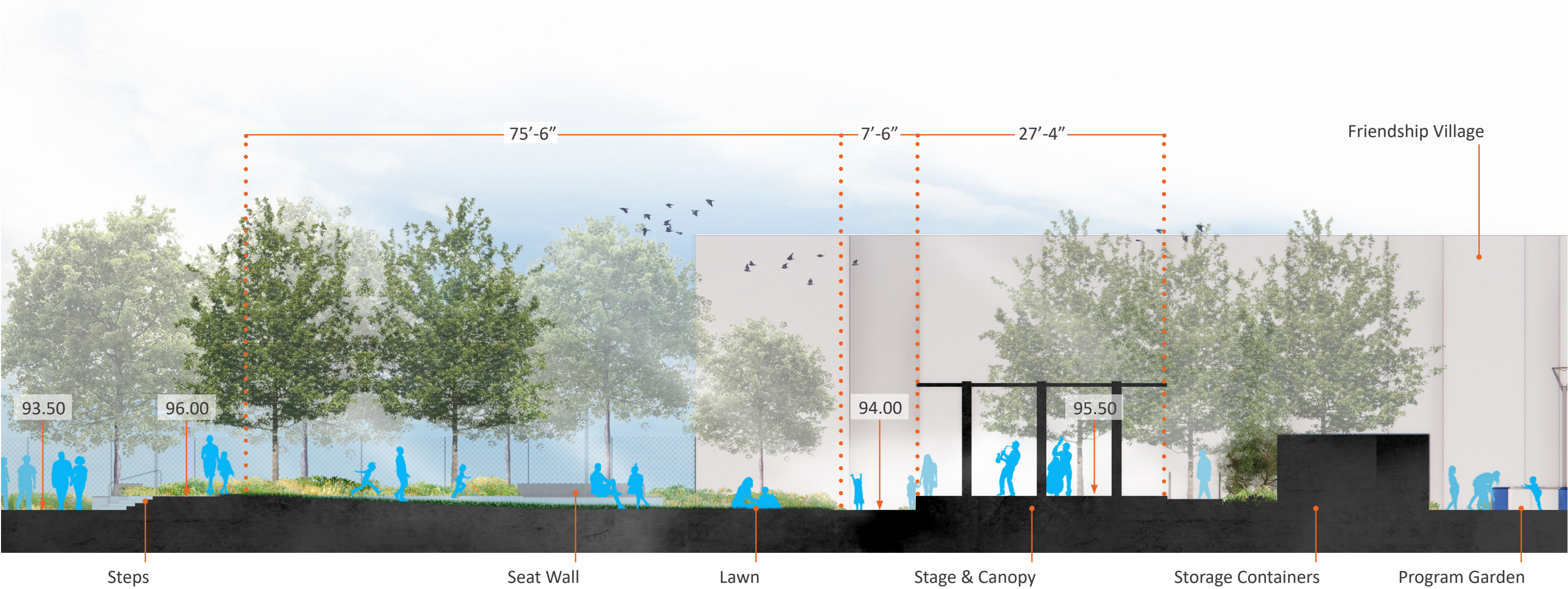
BUCHANAN STREET MALL

Phase 1 | Civic Design Review | May 2022





# SITE SECTIONS: STAGE & LAWN





# FURNISHINGS



Seatwall  
*Concrete wall with wood seat & back*



Picnic Table  
*Metal / Metal and Wood*



Drinking Fountain + Bottle Filler



Bicycle Rack  
*Metal*



Shipping Container w/ Mural  
*Metal*



Stage Canopy  
*Metal*



Hex Decking + Planter  
*Metal and wood*



Removable Bollard  
*Metal*



# SURFACE MATERIALS



Exposed Aggregated Concrete



Pervious Concrete



Lawn



Decking



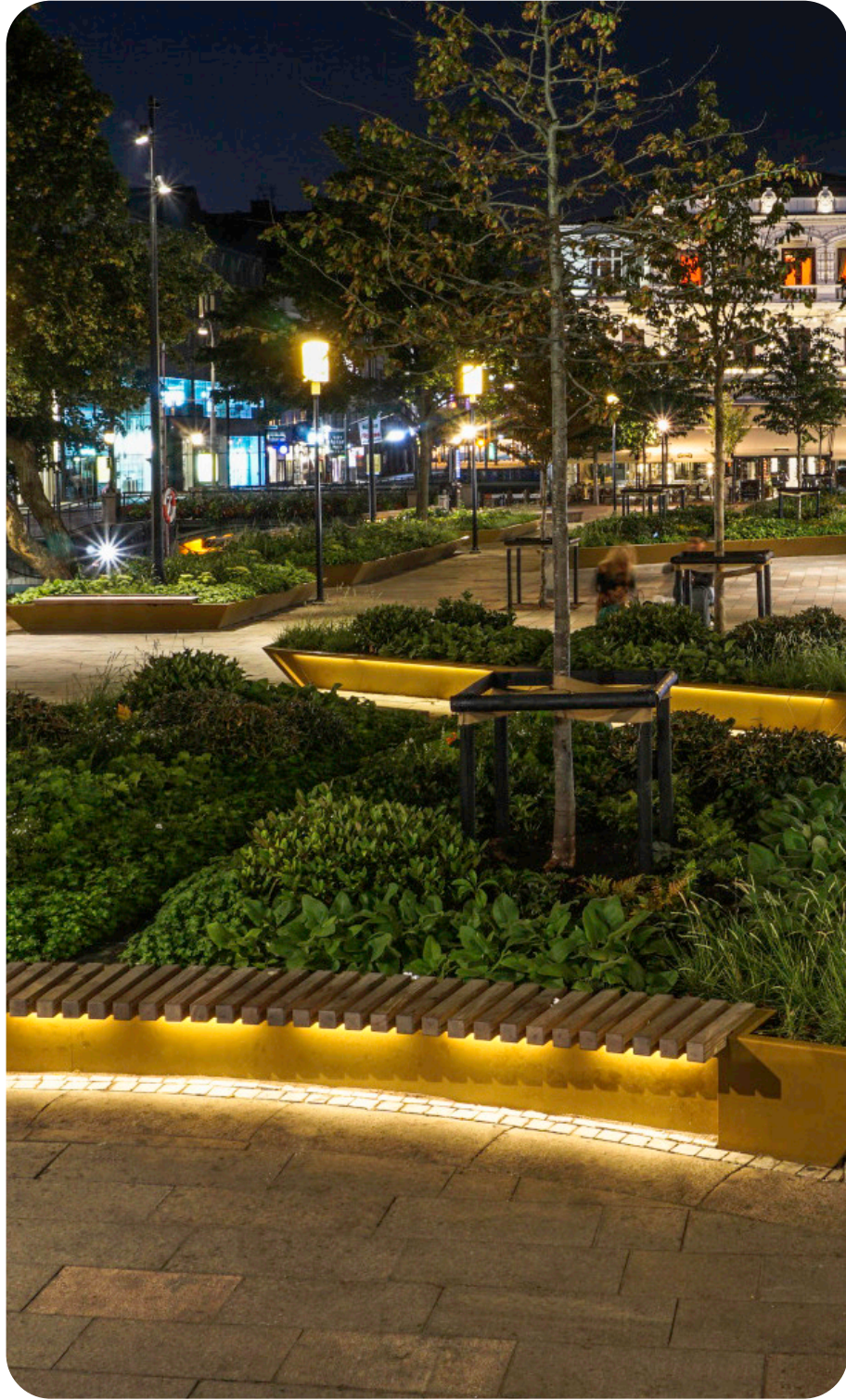
# LIGHTING



Pedestrian Pole Lighting



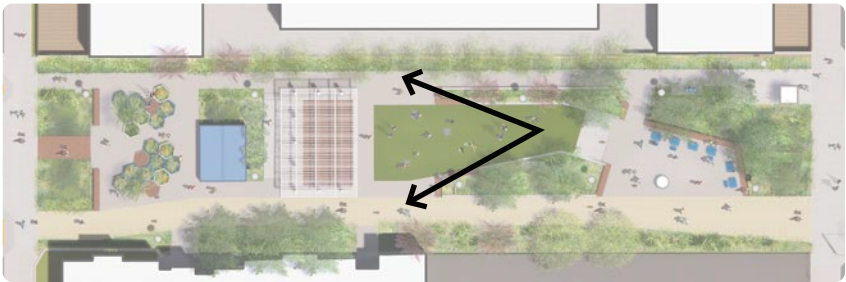
Stage Uplighting



Recessed Ambient Lighting



# PERSPECTIVE: STAGE FROM TOP OF LAWN





# PERSPECTIVE: PLAZA



\*Public art component to be determined. Not a part of Public Works design scope.  
\*\*Art depiction credits: "Portrait of a Phenomenal Woman" by Lava Thomas, image by Eren Hebert.

