

Population Health Division Updates

September 7, 2021



SUSAN PHILIP, MD, MPH

HEALTH OFFICER

ACTING DIRECTOR, POPULATION HEALTH DIVISION

SAN FRANCISCO DEPARTMENT OF PUBLIC HEALTH





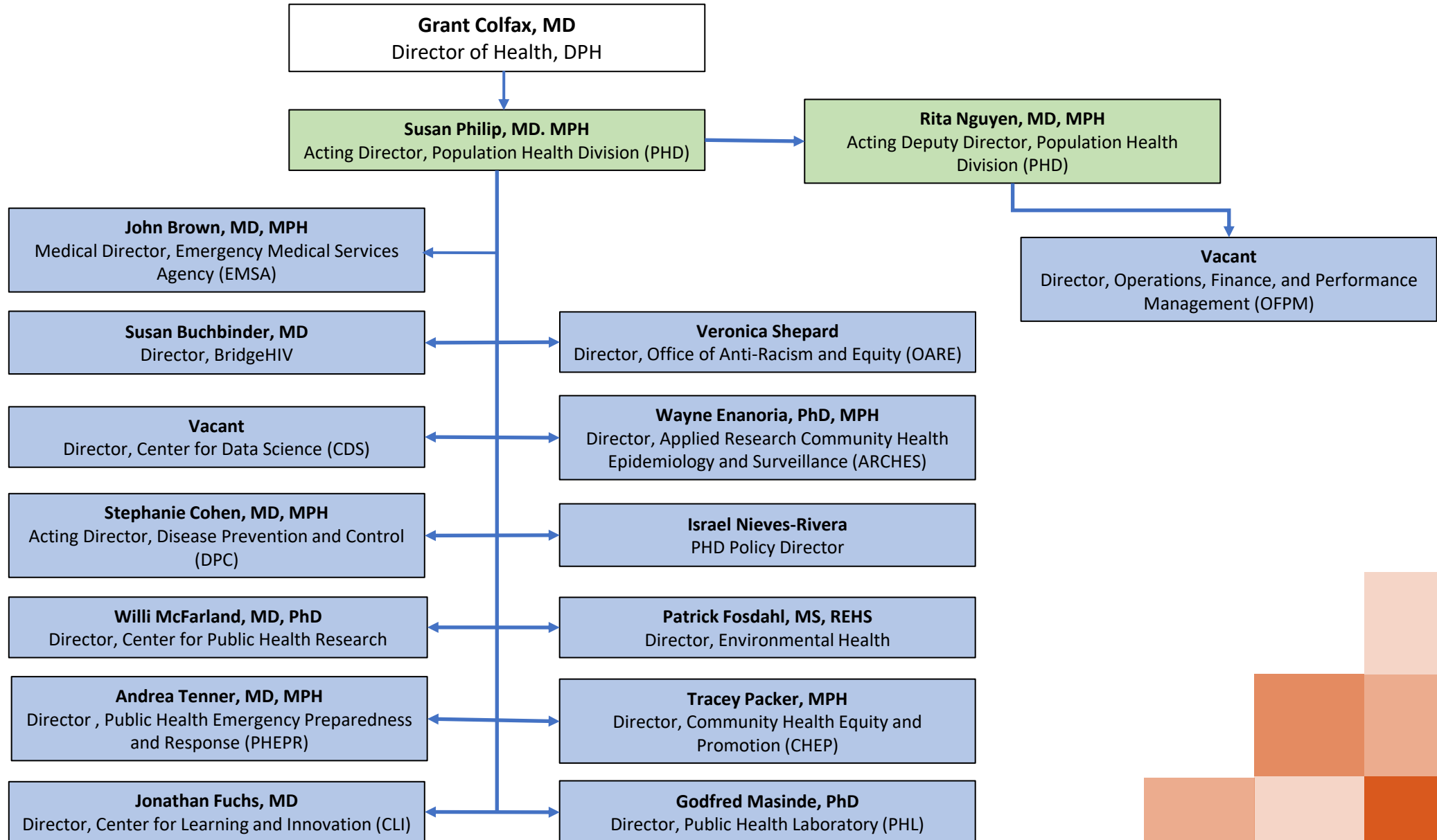
Overview



- 1. Population Health Division (PHD) Org Chart**
- 2. COVID Accomplishments**
- 3. Division Updates**
- 4. Partnerships**
- 5. Thinking Ahead**

Population Health Division Org Chart

Mission: To protect and promote the health and well-being for all in San Francisco





COVID Accomplishments



- PHD staff were the core of the initial response even prior to DOC activation 1/21/20
- Including PHEPR, Communicable Disease, PHL, CHEP, ARCHES



- **161** (31%) PHD staff currently activated for COVID response
- Overall, **470** students and volunteers placed for COVID response



- Secured over **\$35.7 million** in funding to support Epidemiology and Lab Capacity (ELC) for COVID



- **143** of Health Orders/Directives issued since February 2020
- **16** published papers

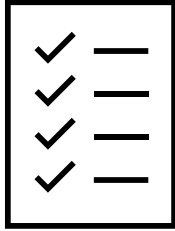


- **48** External Engagement webinars
- **42** Media and press events

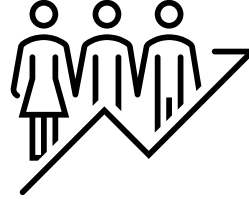




Division Updates



Patrick Fosdahl, MS, REHS
became the new Director of
Environmental Health



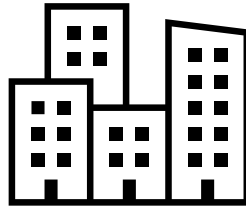
Organization additions

- Office of Anti-Racism and Equity
- Center for Data Science



Information Technology

- TB clinic went live with Epic
- CalConnect set up for COVID surveillance



Space and Locations

- 77 new office spaces were secured for new staff at 1360 Mission and 101 New Montgomery
- Environmental Health moved to 49 South Van Ness
- Public Health Emergency Preparedness and Response moved to 333 Valencia St



Office of Student Placement

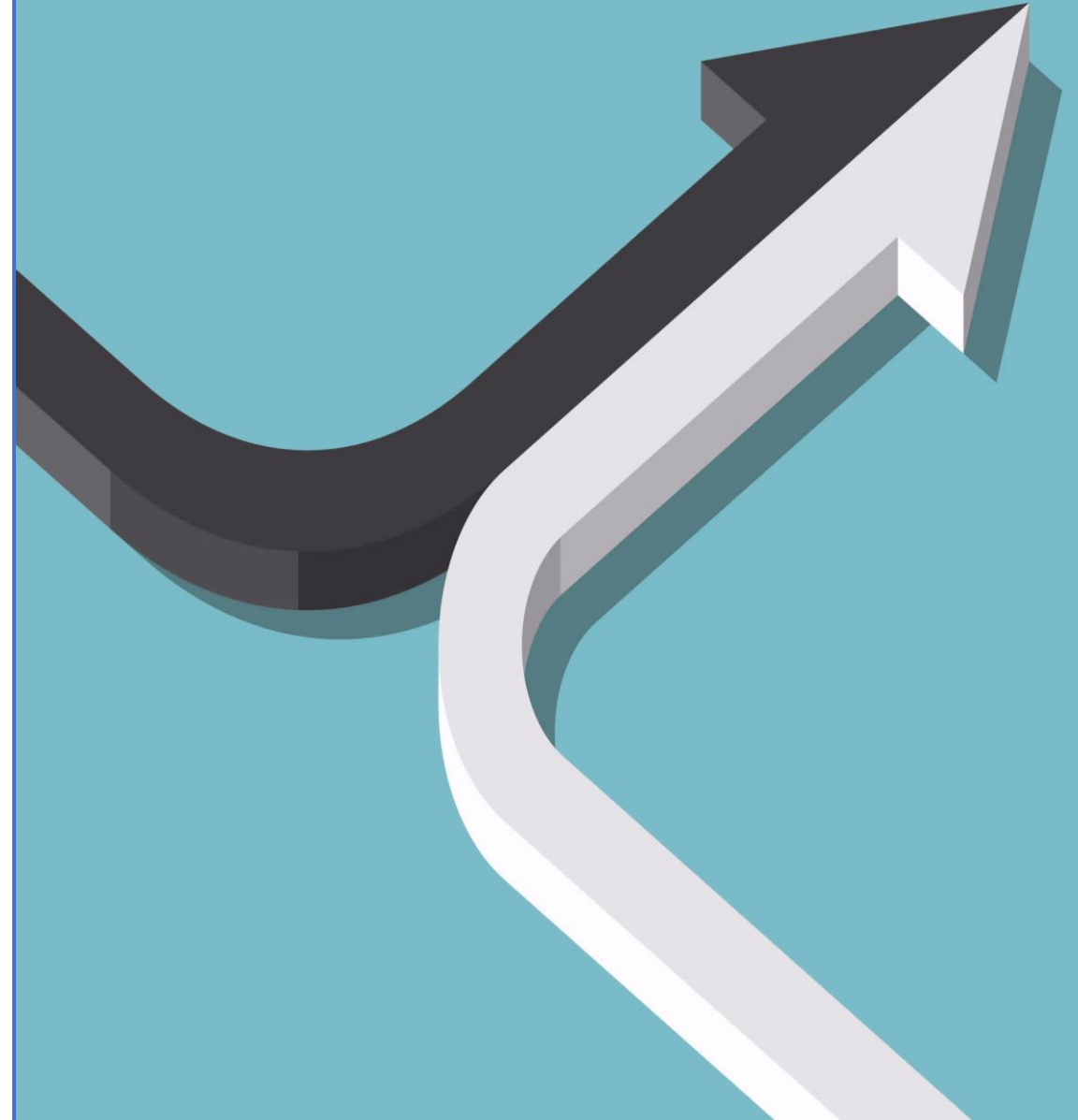
- Established a public health workforce pipeline
- Placed 470 student nurses and volunteers for COVID-19 response
- Prioritized students of color for placement





Partnerships

- DPH Wide
 - SF Health Network
 - Office of Health Equity
- DPH HR
 - 78 civil service staff hired in the last fiscal year (3 per pay period)
 - 55 PHD staff, 23 COVID staff
- CCSF Departments
 - Human Services Agency
 - Office of Economic and Workforce Development (OEWD)
- Community Based Organizations
- Local Colleges and Universities





Thinking Ahead

- Strong PHD organization - essential part of San Francisco's COVID-19 response
 - Short term and long term COVID-19 response planning
- Sustaining investment in core public health functions
 - Epidemiology
 - Community engagement
 - Disease investigation
 - Public health laboratory capacity
- Organizational health and sustainability



Thank you!
Questions?



POPULATION HEALTH DIVISION
SAN FRANCISCO DEPARTMENT OF PUBLIC HEALTH