

COVID-19 Update

Grant Colfax, MD
Director of Health

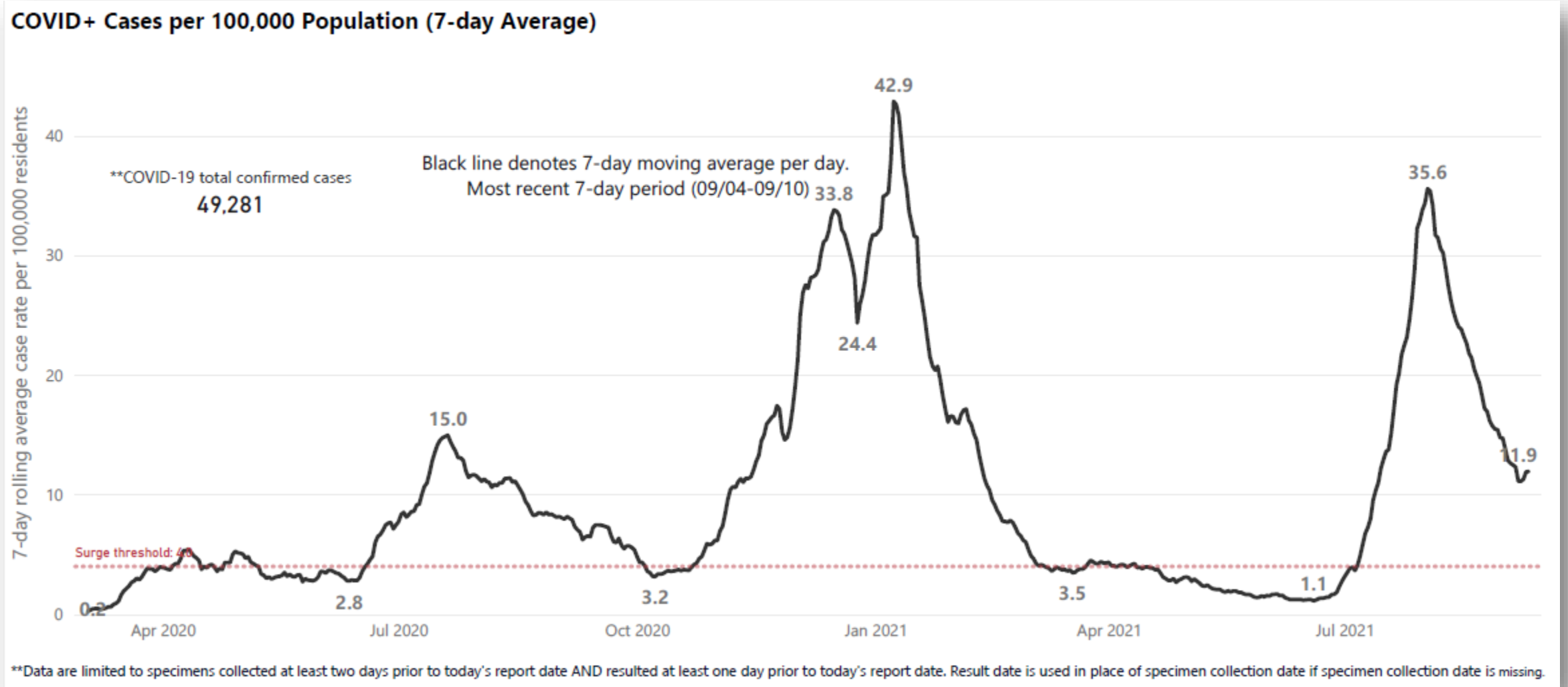
September 21, 2021



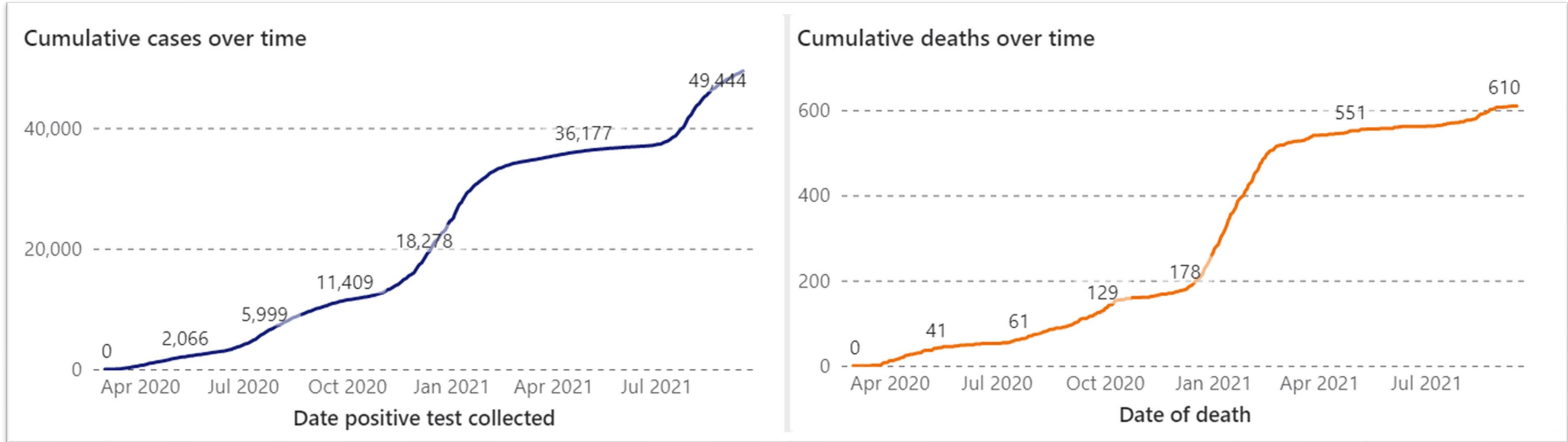
SAN FRANCISCO DEPARTMENT OF PUBLIC HEALTH



SF COVID cases per 100,000 residents



Cumulative COVID Cases and Deaths: SF





County Comparisons

City	County	State	Cases/1,000 population	Deaths/100,000 population	Deaths/100 cases (%)
San Francisco	San Francisco	CA	55.7	69.5	1.30%
Seattle	King	WA	62.9	80.5	1.60%
Denver	Denver	CO	113.4	120.9	1.30%
Atlanta	Fulton	GA	114.4	146.3	1.30%
Baltimore	Baltimore City	MD	69.1	155.6	2.50%
DC	DC	DC	80.7	165.1	2.50%
Boston	Suffolk	MA	125.4	233	2.20%
Miami	Miami-dade	FL	236.4	238.2	1.30%
Philadelphia	Philadelphia	PA	106.8	243.1	2.60%
Los Angeles	Los Angeles	CA	142.3	255.3	1.80%
New York City	New York City	NY	126.1	407.6	4.20%

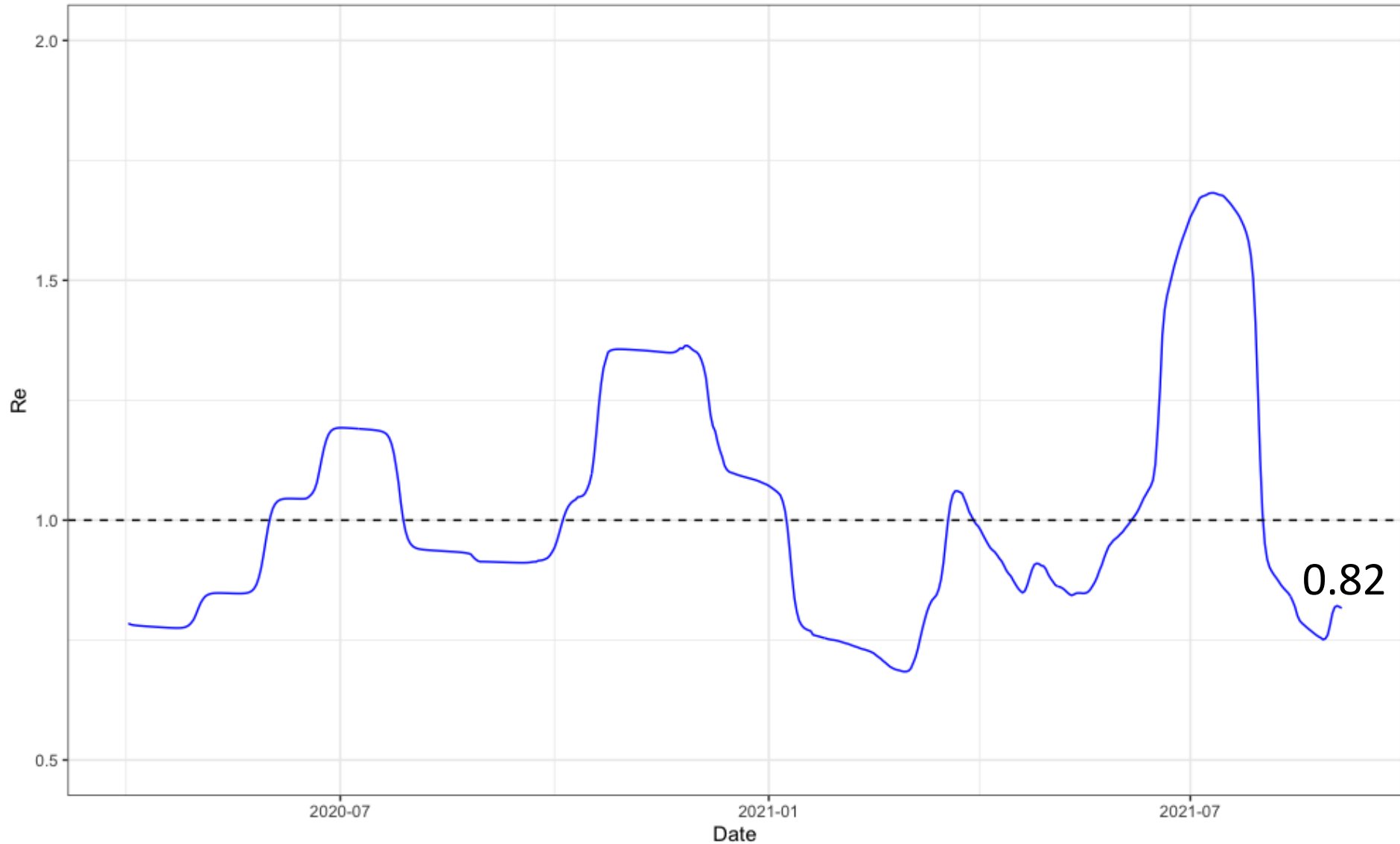
Note: Case and death data are cumulative. Sources: The New York Times from <https://github.com/nytimes/covid-19-data> as of 1/31/2021, local county health department websites, US Census.

Reproductive Rate Under 1.0



Effective Reproduction Number

Rt as of 2021-09-04 = 0.82



Data through 9/18



SF Hospitalizations

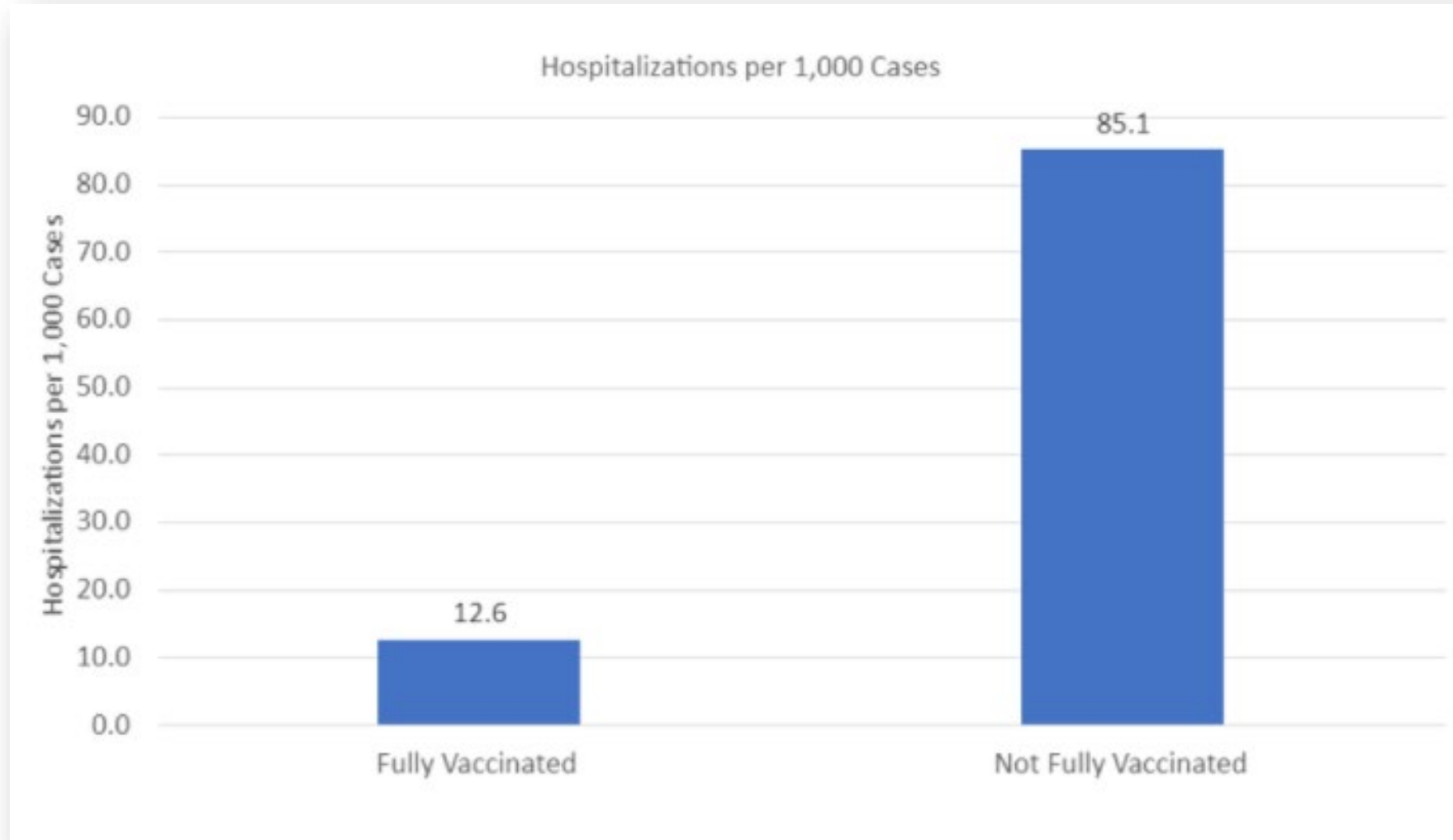
54 individuals on 9/17/2021, includes 22 in ICU

Total COVID-19 patients in acute care and intensive care



*Data represented on the above chart is **lagged by 4 days**

Hospitalizations per Fully and Not Fully Vaccinated





Vaccine Administration

Population	Population Size	# Received 1 st dose	% of Population Received 1 st dose	# Received 2 nd dose	% of Population Received 2 nd dose
SF Residents all ages	874,787	694,039	79%	644,160	74%
SF Residents >12 yo	791,131	694,039	88%	644,160	81%
SF Residents 65+	135,027	128,058	95%	119,318	88%
SF Residents 75+	60,907	52,689	86%	48,837	80%



Full Vaccination Rates Compared

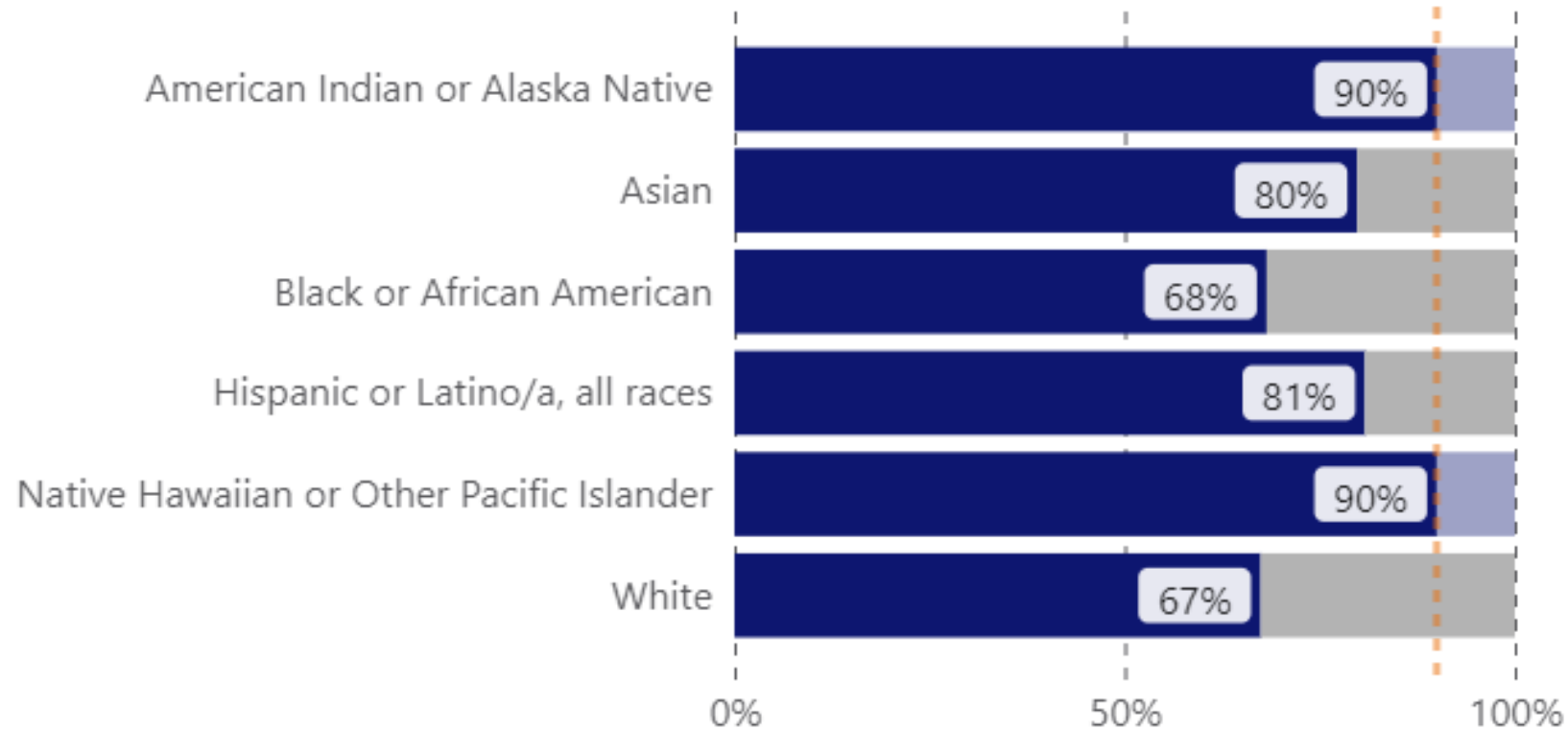
- If San Francisco was a country, it would be the 3rd most fully vaccinated nation in the world
- SF: 81% fully vaccinated
- CA: 58% fully vaccinated
- US: 54.7% fully vaccinated
- Top fully vaccinated countries:
 - Malta (83%)
 - United Arab Emirates (82%)
 - Portugal (81%)
 - Singapore (80%)



Vaccinations by race/ethnicity

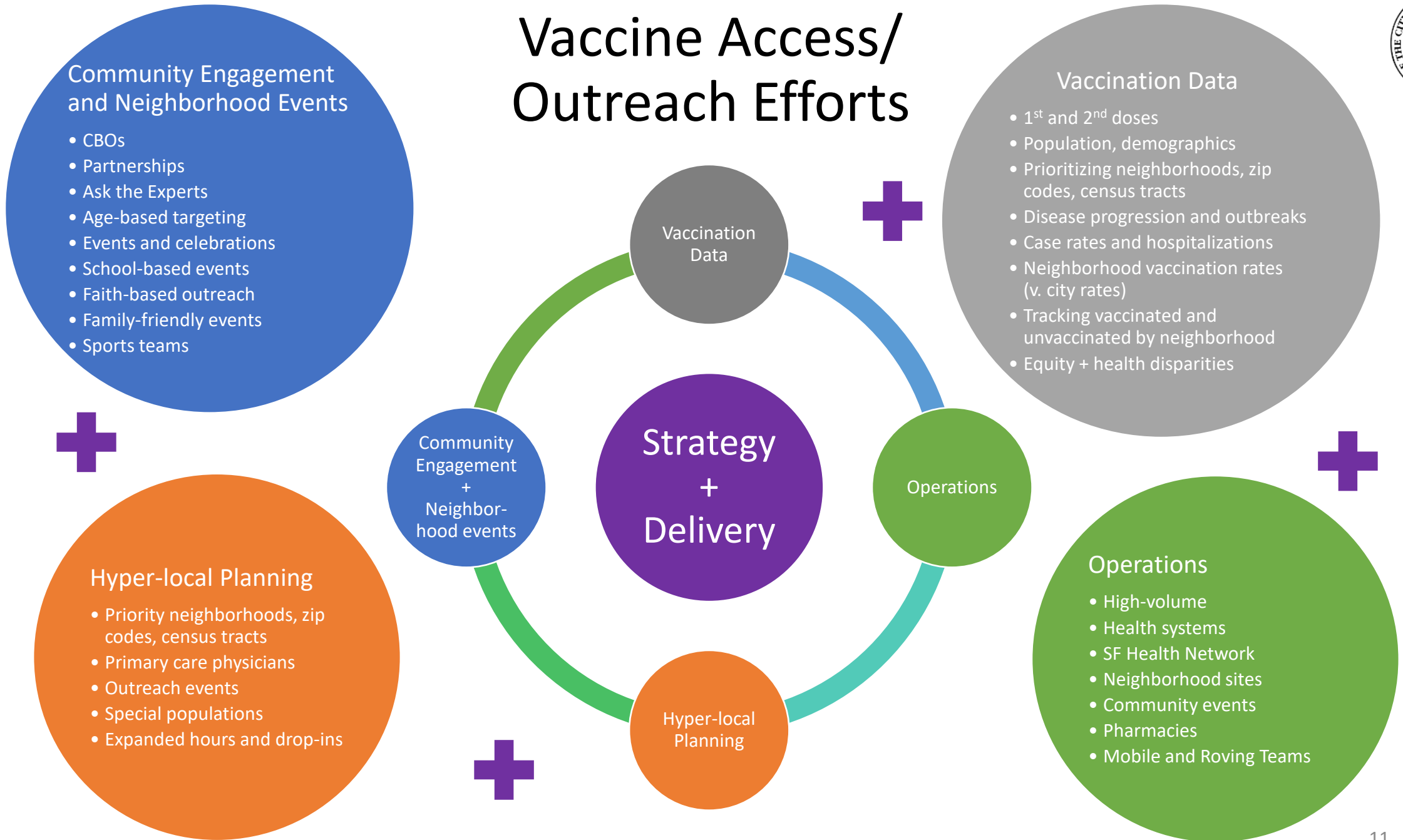


Estimated percent of residents that received at least one dose of vaccine, by race/ethnicity



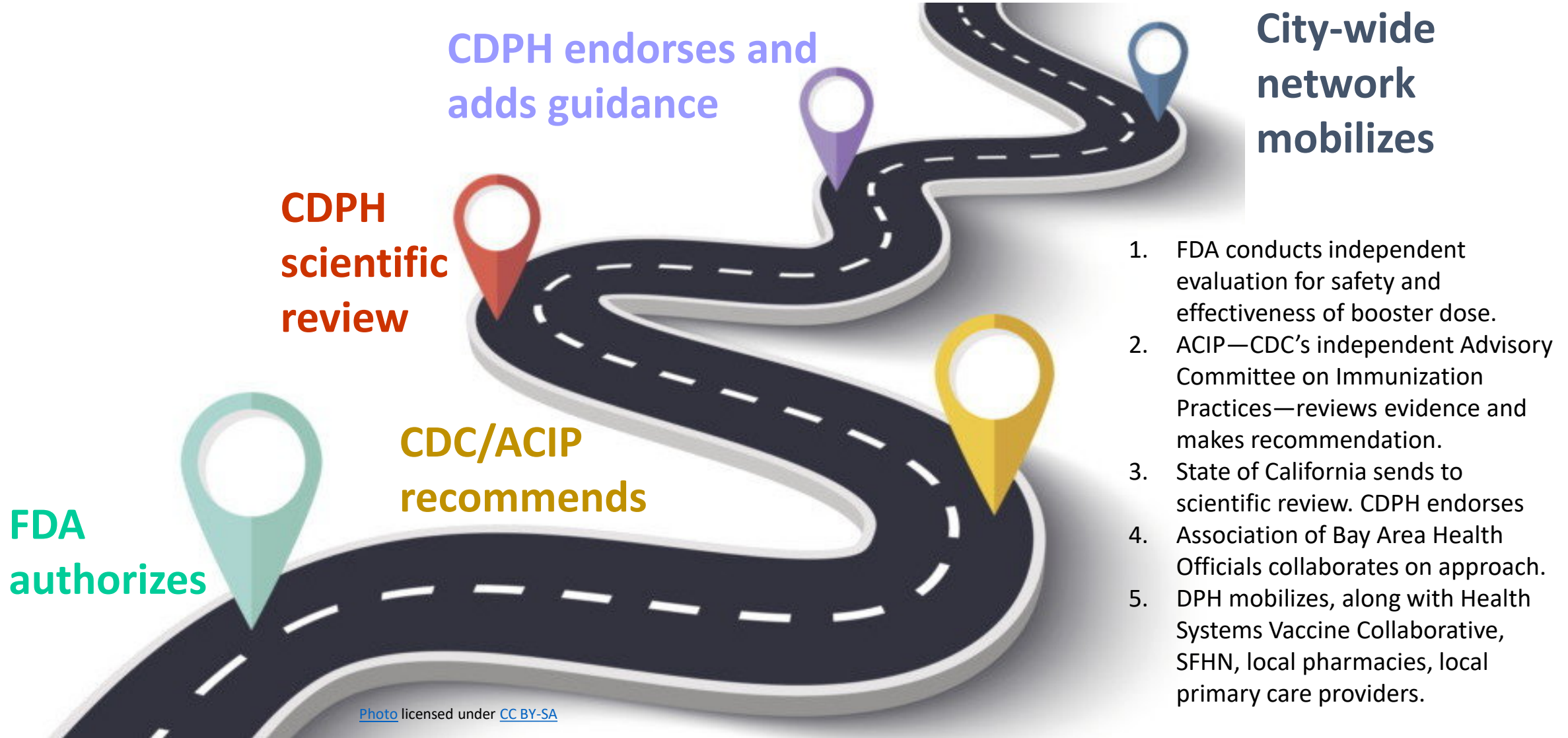
*For race/ethnicity groups with smaller populations, population size estimates may not be precise. If the true population is larger than the estimate we use here, then the true vaccination rate will be lower than reported above. Because of this uncertainty, we only report vaccinations rates up to 90%

Vaccine Access/ Outreach Efforts





Many stops along the road to boosters





COVID-19 Booster Planning

Principles:

- Equity
- Partnership
- Speed
- Transparency and Accountability

Goals:

1. Prioritize vaccination for unvaccinated residents of San Francisco who have not yet completed their 1st and/or 2nd dose of COVID-19 vaccine; ***including preparing for anticipated expansion for 5–11-year-olds***
2. Ensure sufficient city-wide vaccine access and throughput to support a potential phase- and eligibility-based booster program roll-out



Current State – Capacity for Doses Per Week

CITY / DPH / CCC
3-pronged vaccination strategy

High-volume
Vaccination
Sites

Community Vaccine Access Sites
• SFHN • Community Clinics •
• Neighborhood Sites • Mobile Units •

Pharmacies

Health System Sites	SF Health Network	Community Clinics	Neighborhood Sites / Vendor Events	Mobile Units	Pharmacies
Serving their own patients And public access	Serving its own patients; and patients outside SFHN ⁴	Standing sites with vaccine access; affiliate staff not DPH	Serving communities most impacted by COVID	Teams serving those with access + functional needs	Retail locations and Long Term Care Facility Events
Kaiser Permanente ^{2.8} <ul style="list-style-type: none">Geary MV600/day	ZSFG <ul style="list-style-type: none">Learning Ctr & 4E ⁹Daily target: 1,400	North East Medical Services <ul style="list-style-type: none">6 San Francisco sites	Mission 24th + Capp	In home / work events for vulnerable/low access	Walgreens (multiple)
UCSF CHVS ^{2.8} <ul style="list-style-type: none">700/day	Maxine <ul style="list-style-type: none">Daily target: 1,500	Mission Neighborhood Health Center <ul style="list-style-type: none">Right 360	Bayview 1800 Oakd	People with limited health care access + in vulnerable communities	CVS ^{2.12}
Sutter <ul style="list-style-type: none">7 Primary Care / Urgent Care sites300/day	Ocean Park <ul style="list-style-type: none">Weekly target: 200	Chinese Hospital	Excelsior	(PEH). (sheltered + unsheltered)	Safeway
Dignity <ul style="list-style-type: none">St M/St FranciIn November Drive through at St Mary's	SE Health Center ⁹ <ul style="list-style-type: none">Daily target: 300	South of Market Health Center	Visitation Valley <ul style="list-style-type: none">1099 Sunnysdale ^{4.12}2055 Sunnysdale	< 200	> 15,000-25,000
	Chinatown Public Health Center <ul style="list-style-type: none">Weekly target: 200	St. Anthony's <ul style="list-style-type: none">Tenderloin	OMH		
	Curry Senior Ctr <ul style="list-style-type: none">Weekly target: 150	SF Community Health Clinic <ul style="list-style-type: none">Tenderloin	Tenderloin <ul style="list-style-type: none">Larkin Street YSGlide - ThursBoedekker - Sat		
	Potrero Hill		SFUSD ^{5.23} <ul style="list-style-type: none">Malcolm X AcademyBalboa HSMcCoppin ESSunset ES		
	Silver Avenue ^{4.8}				

* Expanded beyond health care workers and those >65.
Includes those who work in education and childcare,
emergency services, and food and agriculture sectors.

Partnership & Collaboration



UCSF Health



KAISER PERMANENTE®



CHINESE HOSPITAL



Dignity Health®



Sutter Health
CPMC



San Francisco
Health Network

ZSFG Learning Center
Maxine Hall
Southeast
Chinatown
Curry

Ocean Park
MRSC
Jail Health
Health at Home
Whole-person Integrated Care

Tom Waddell Urgent Care
Potrero Hill
Silver Avenue
BHS Mobile
Laguna Honda



SAFEWAY PHARMACY



Looking Ahead

- Sustain efforts to respond to future surges
- Adapt systems to endemic COVID
- Vaccines: Boosters, 5–11-year-olds, primary dose hesitant
- Ongoing priorities: SNFs, shelters, schools, jail, and communities most disproportionately affected by COVID

A close-up photograph of a silver-colored button with a square arrow pointing to the right. Below the button, the word "Forward" is embossed in a serif font on a light-colored, textured surface.

Forward