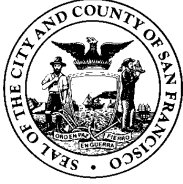


Office of the
Chief Medical Examiner
City and County of San Francisco



Fiscal Year 2012-2013
Annual Report



OFFICE OF THE CHIEF MEDICAL EXAMINER

Michael D. Hunter, M.D.
Chief Medical Examiner

Christopher J. Wirowek
Director of Operations

December 2017

Dear Reader,

This is the Annual Report of the Office of the Chief Medical Examiner (OCME) for Fiscal Year 2012-2013. This is the tenth edition of the Office's Annual Report, and incorporates cases investigated during the Fiscal Year 2012 - 2013 (includes decedent data who have died on June 30, 2012 and up to July 1, 2013).

The OCME provides forensic science services to the public and agencies of the City and County of San Francisco. These services include, but are not limited to the investigation of sudden, unexpected, and violent deaths, monitoring the health and healthcare provided within the community, and human performance drug screening.

In Fiscal Year 2012 – 2013, approximately 4432 deaths or 74% of all deaths occurring in the City and County of San Francisco were reported to the OCME. Of those deaths, 1213 or approximately 20% of all deaths with the City and County were investigated by the OCME.

The Forensic Laboratory Division of the OCME serves as the testing center for postmortem specimens from cases investigated by the OCME, as well as human performance testing in living individuals (public intoxication, driving under the influence, and drug-facilitated-sexual assaults). The Forensic Laboratory Division analyzed approximately 1955 total cases in Fiscal Year 2012 – 2013.

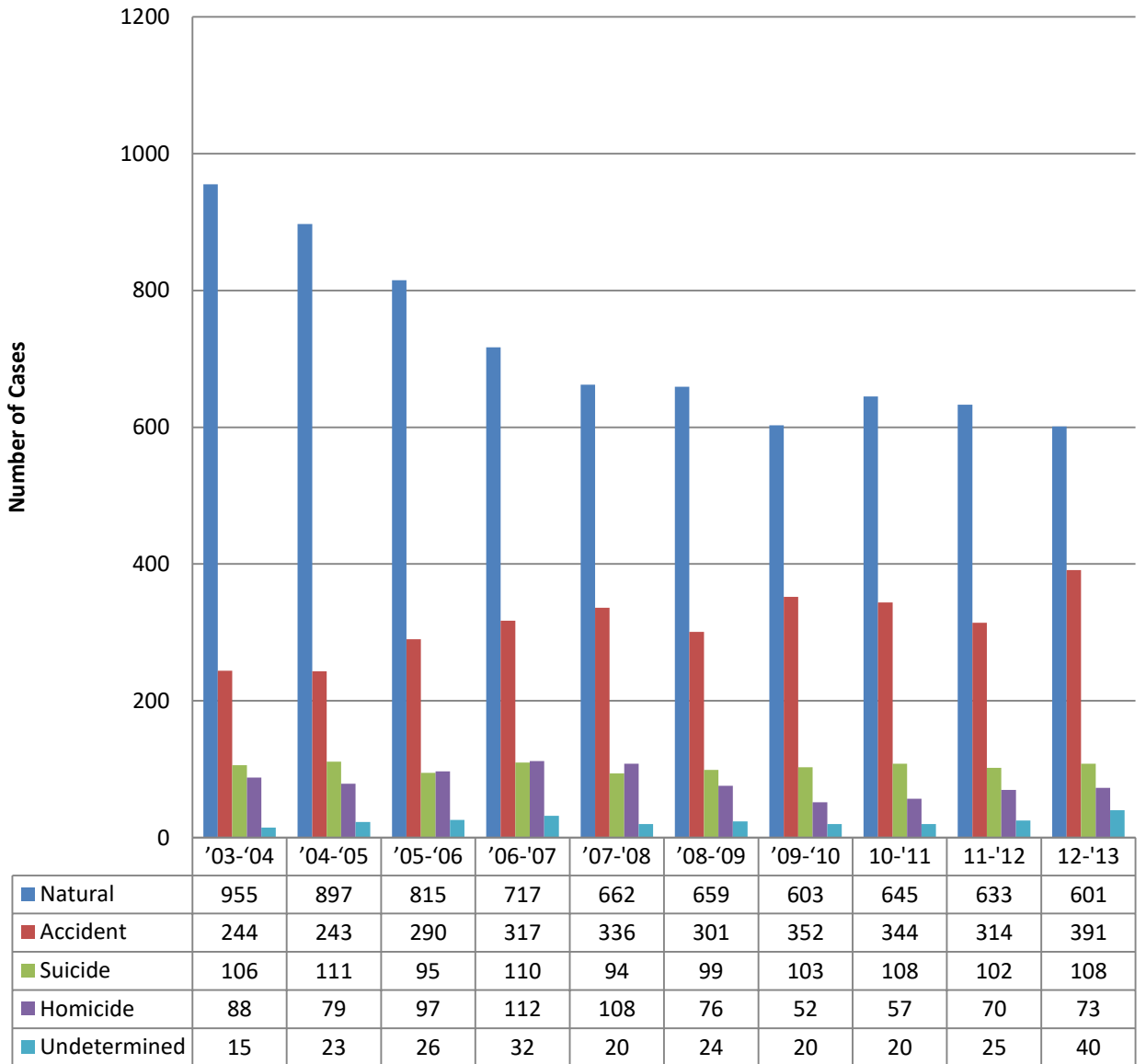
The aging physical plant was replaced and move-in was completed by the end of October 2017. This replacement facility has improved our day to day efficiency and increased the City's resiliency in the event of a natural or man-made disaster.

Although our work is emotionally and physically challenging, we strive to offer compassionate assistance to families through times of great sorrow and stress, while completing investigations as neutral forensic scientists, producing results that are both accurate and complete.

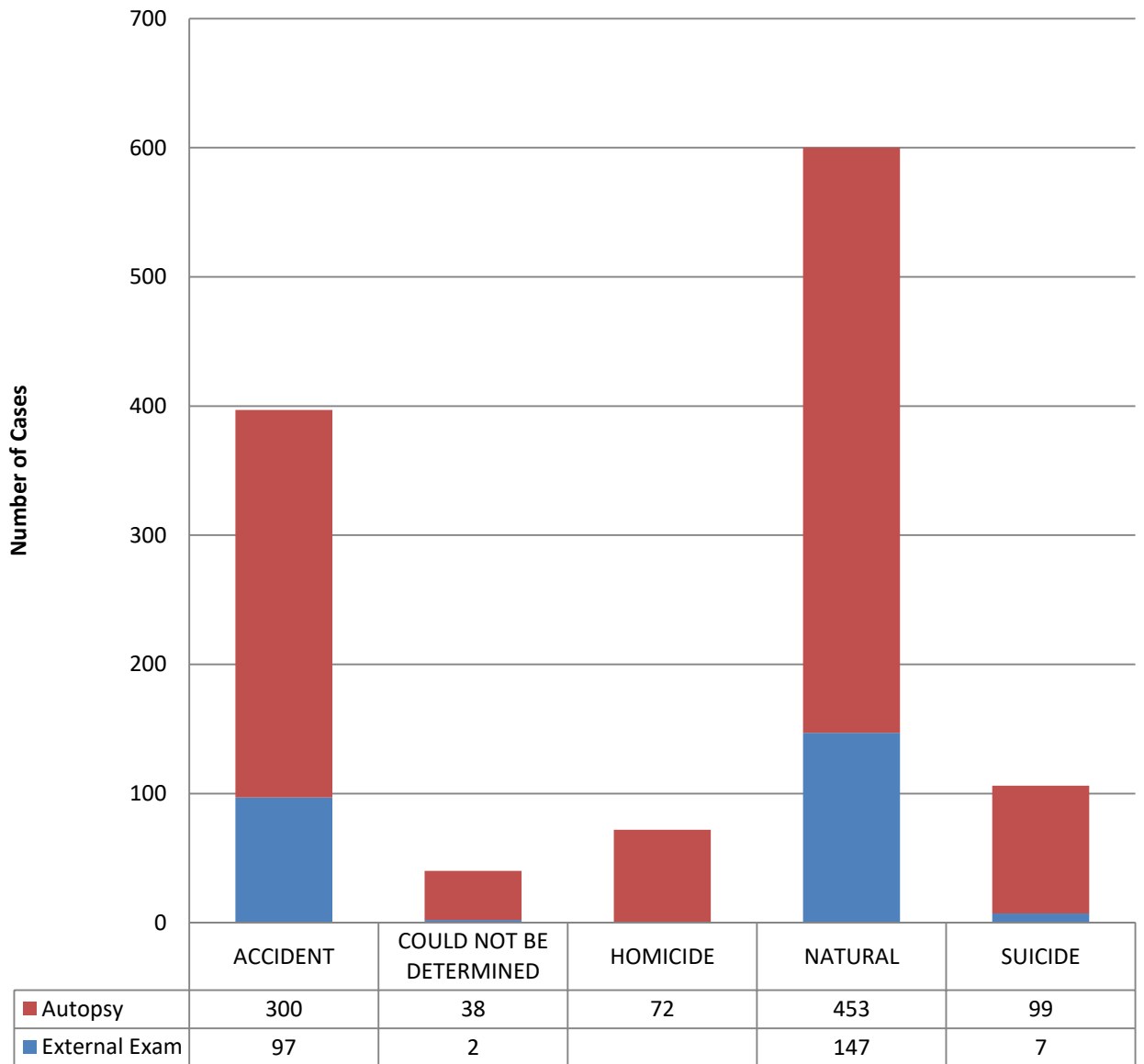
Respectfully,

The Staff of the City & County of San Francisco
Office of the Chief Medical Examiner

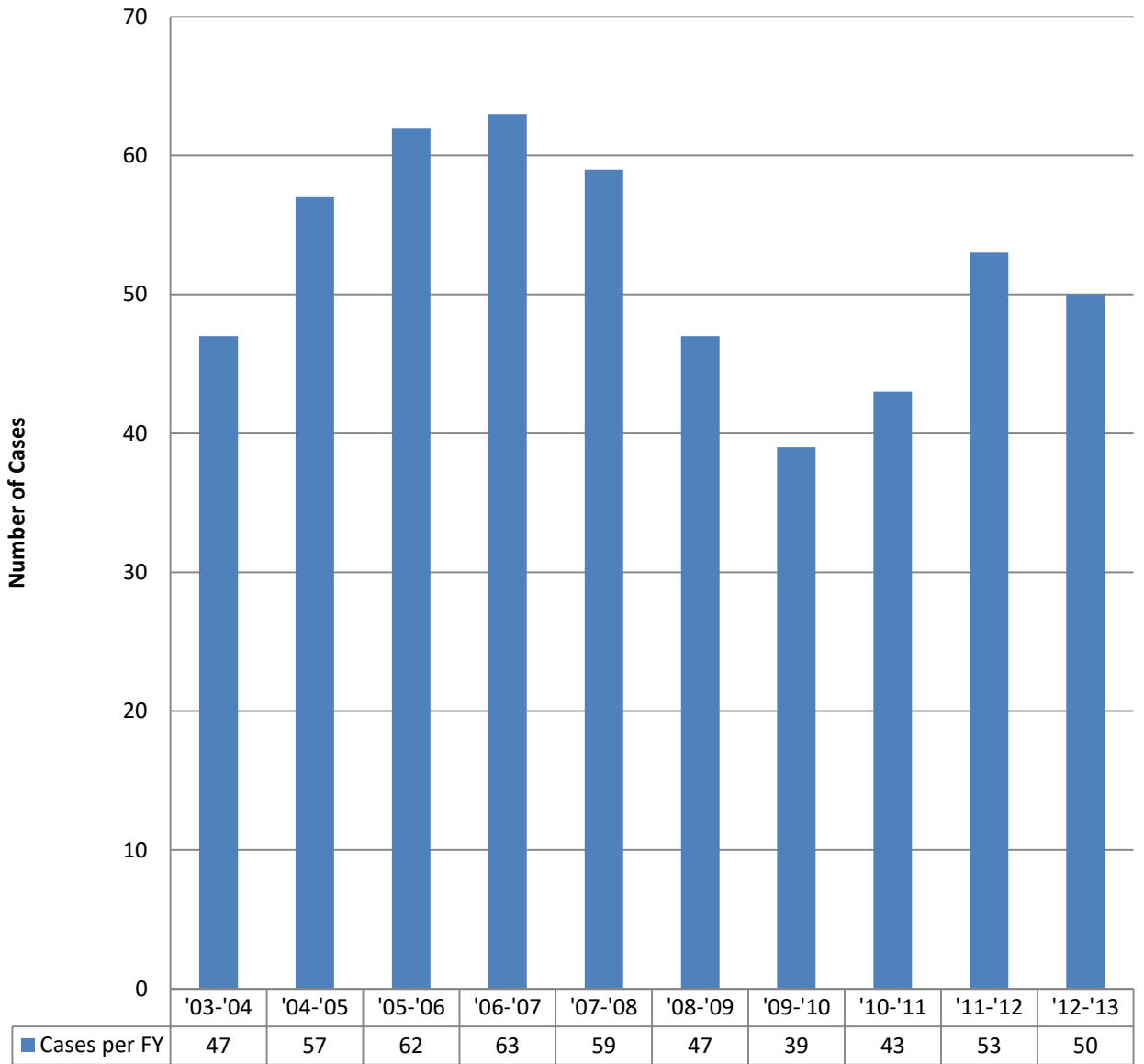
Manner of Death 10 Year Perspective



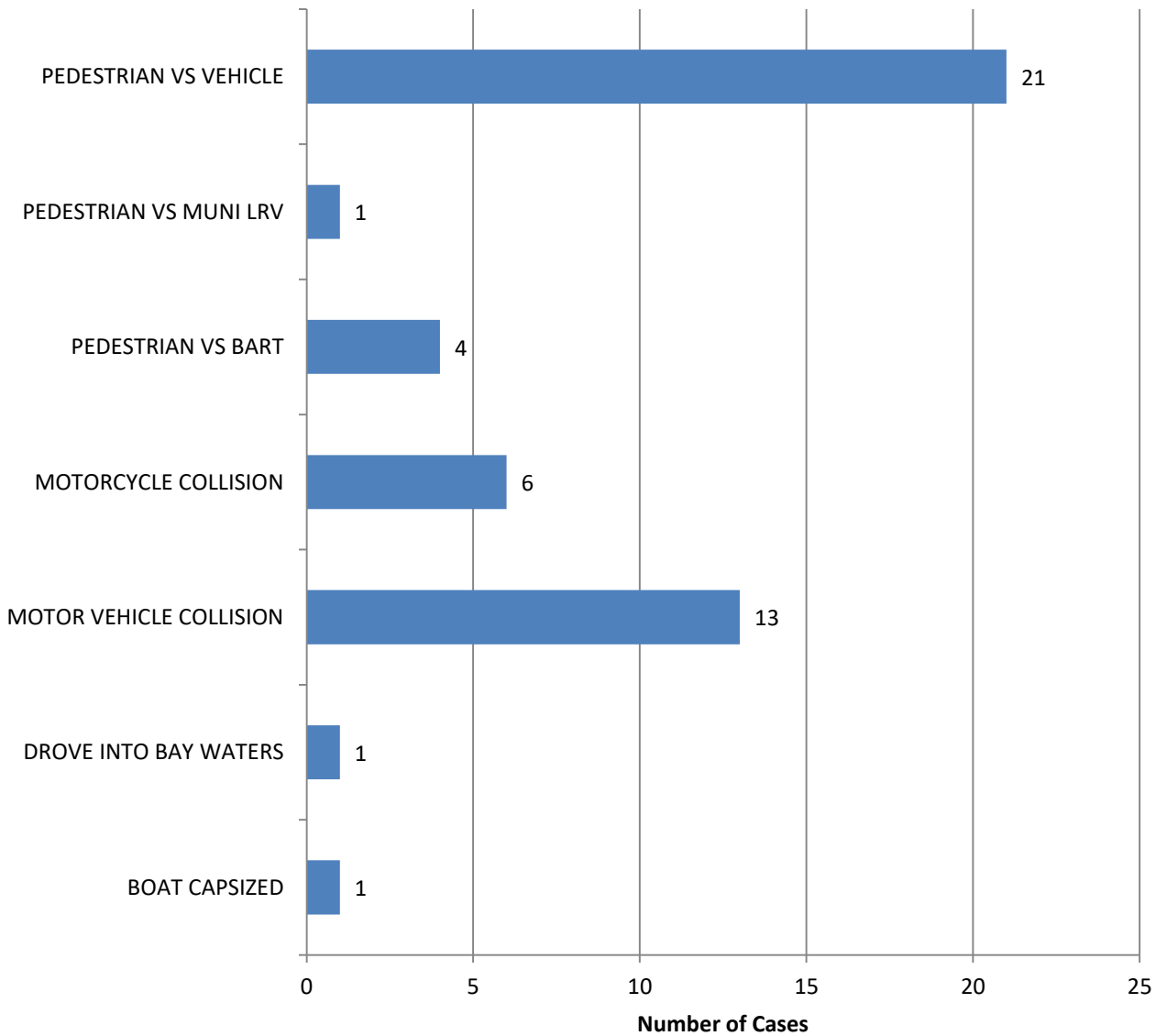
FY 2012-2013 Exam Type by Manner of Death



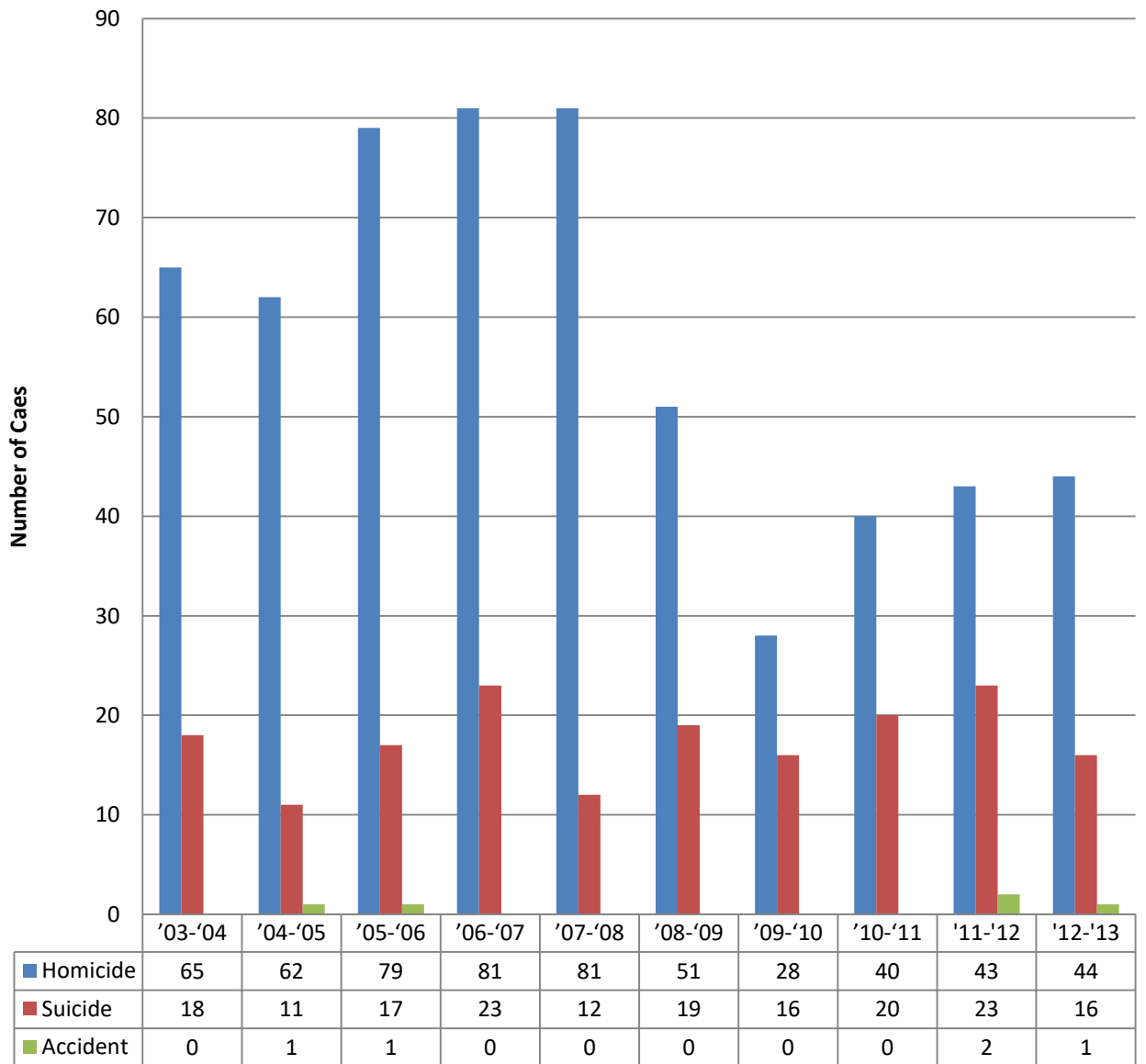
Vehicular Death 10 Year Perspective



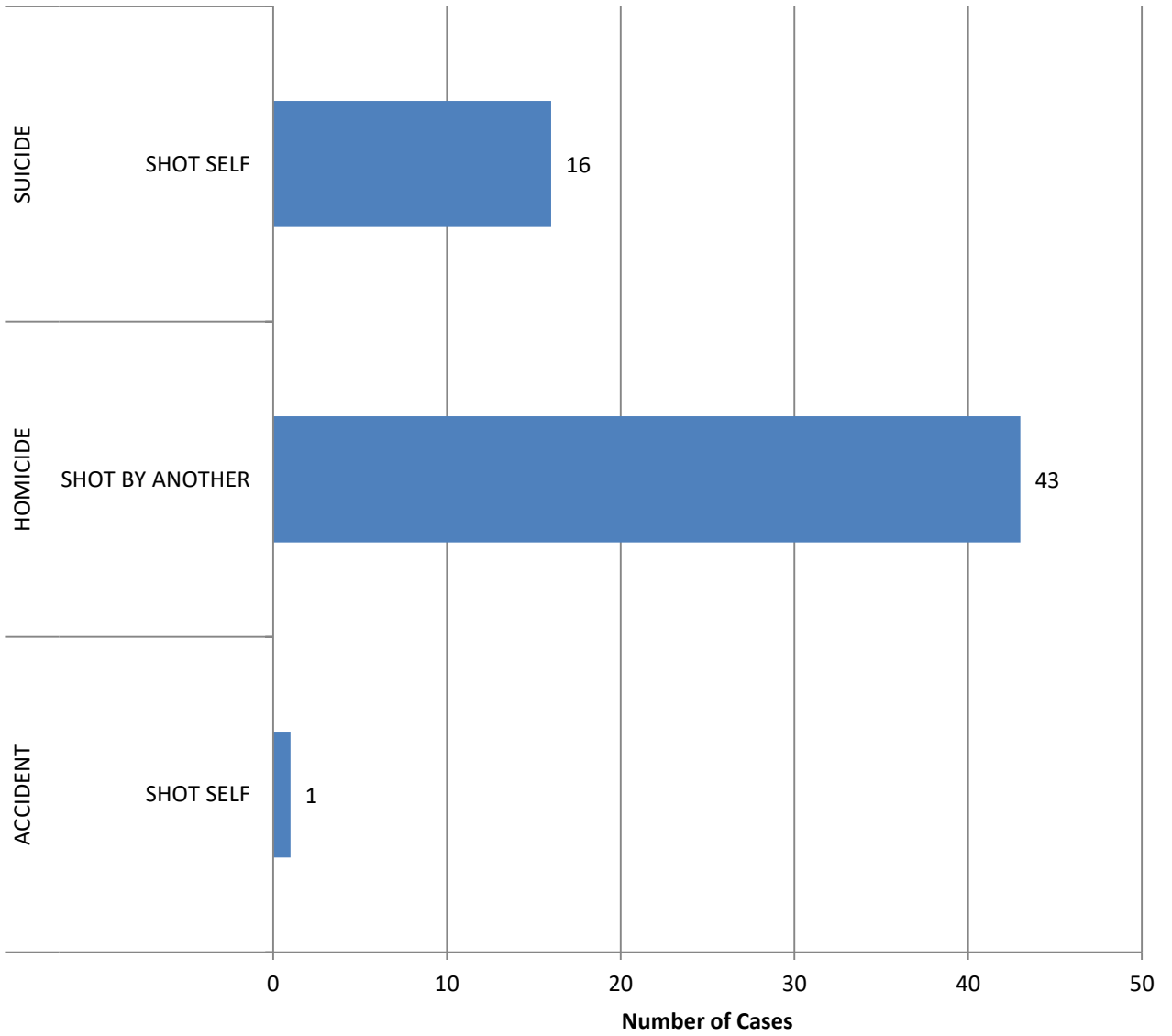
FY 2012-2013 Vehicular Death by Method



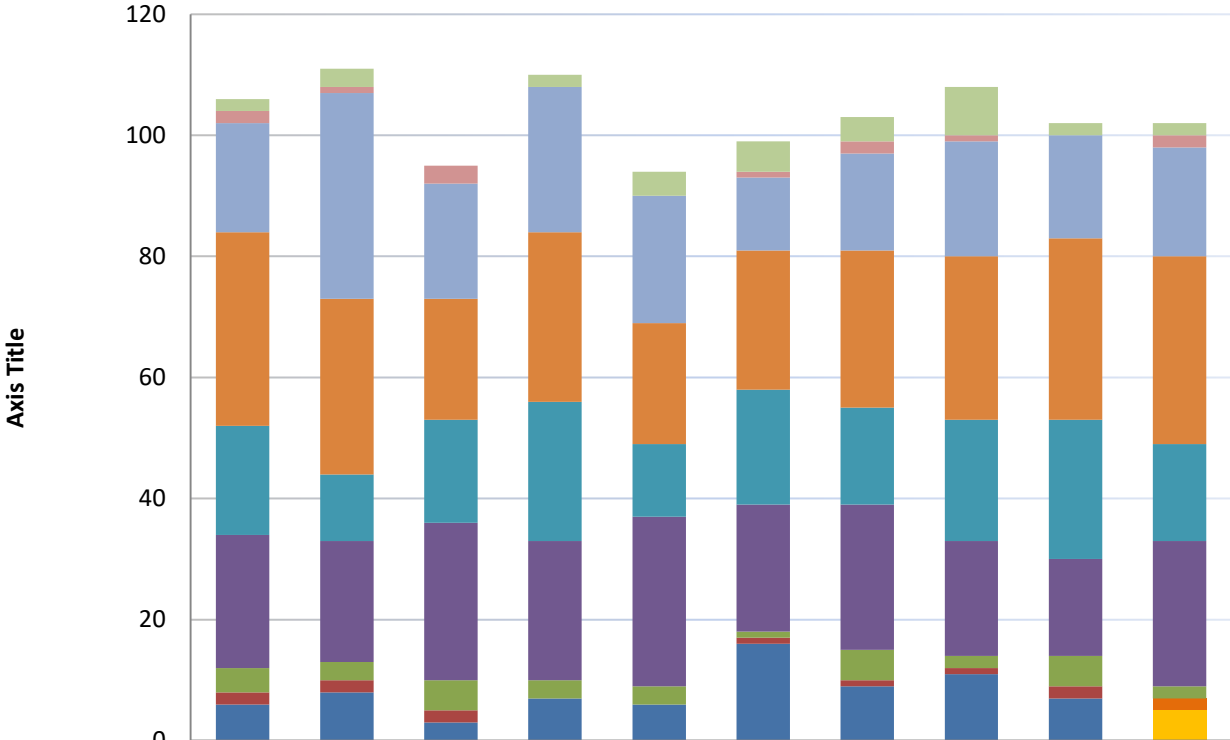
Firearms Death 10 Year Perspective



FY 2012-2013 Firearm Death by Manner & Method



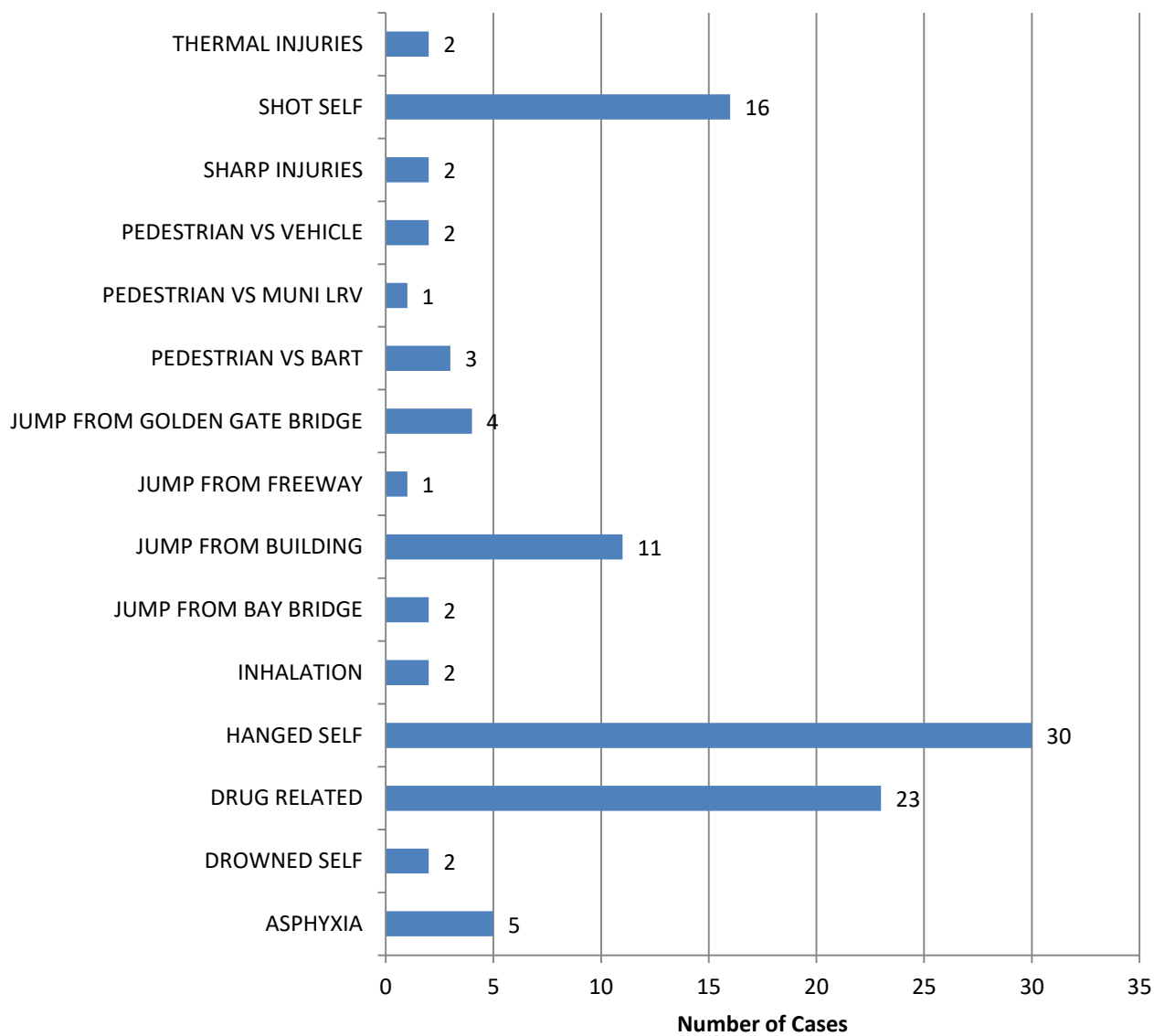
Suicide Ten Year Perspective



	'03-'04	'04-'05	'05-'06	'06-'07	'07-'08	'08-'09	'09-'10	'10-'11	'11-'12	'12-'13
Sharp Injury	2	3	0	2	4	5	4	8	2	2
Other	2	1	3	0	0	1	2	1	0	2
Jump	18	34	19	24	21	12	16	19	17	18
Hanging	32	29	20	28	20	23	26	27	30	31
Firearm	18	11	17	23	12	19	16	20	23	16
Drug-related	22	20	26	23	28	21	24	19	16	24
Drowning	4	3	5	3	3	1	5	2	5	2
CO Poisoning	2	2	2	0	0	1	1	1	2	2
Asphyxia	6	8	3	7	6	16	9	11	7	5

FY 2012-2013 Suicide by Method

FY 2012-2013 Suicide by Method



FY 12-13 Natural, Undetermined, and Accidental child deaths

